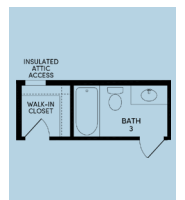
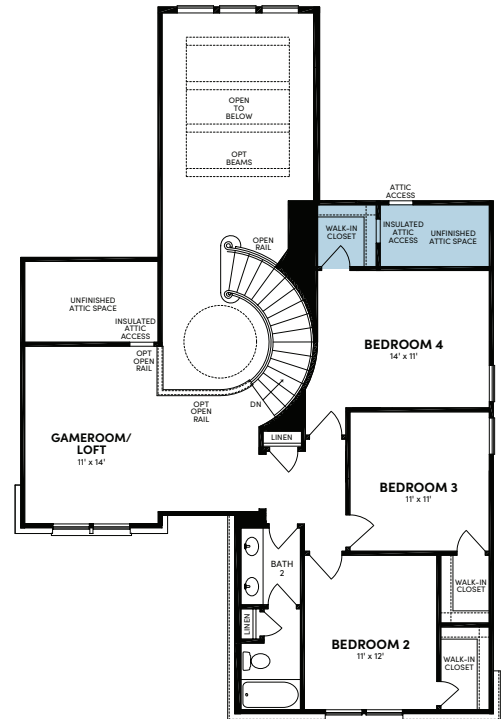
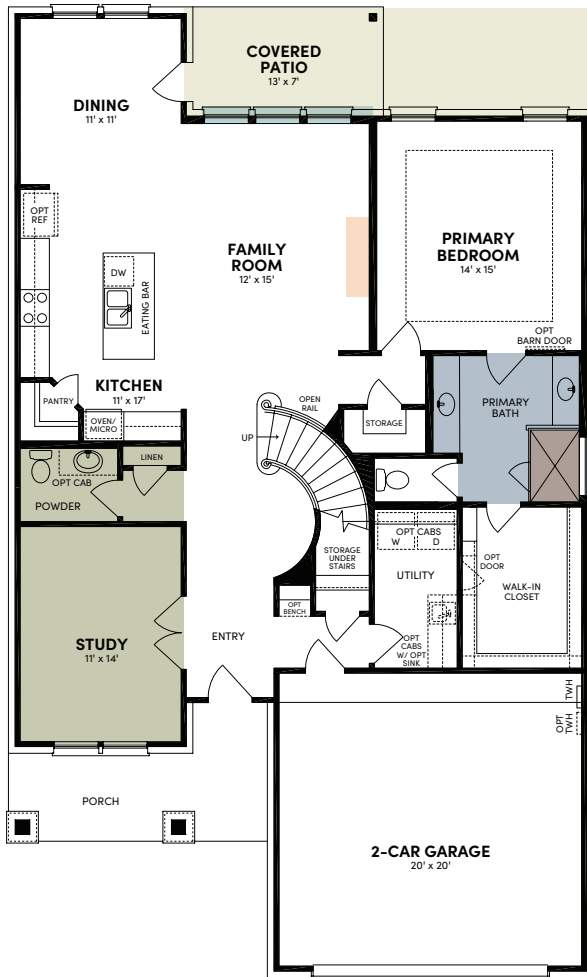


# The Oxford

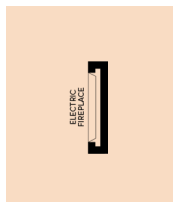
## TRADITIONAL HOMES

2,721 Sq. Ft. | 4 Bedrooms | 2.5 Baths | 2-Car Garage | 50 Ft. Lot Size | Plan #5236

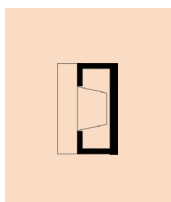


Bath 3

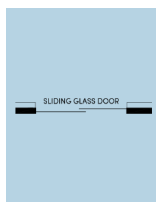
### ADDITIONAL OPTIONS:



Electric Fireplace



Fireplace



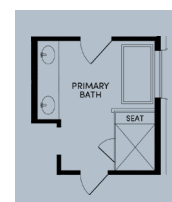
Sliding Glass Door



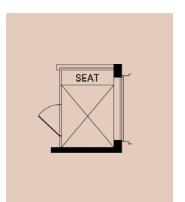
Extended Covered Patio



Bedroom 5  
Bath 4



Primary Bath 2



Shower Seat



BrookfieldTX.com | 832-734-8857

The total number, layout, design and location of homes; unit mix; and the location, design and layout of recreational facilities may be changed due to a number of circumstances, including governmental requirements and market demand. Dimensions are approximate in nature and are not intended for final reference.

Brookfield Residential and its affiliates reserve the right to change homesites, timelines, floor plans and home prices and make modifications in materials and specifications at any time without prior notice. © 2025 Brookfield Residential Properties ULC. All rights reserved. REV. FEB/2026



MIDLINE™

# Oxford: Elevation Options



**ELEVATION E**



**ELEVATION F**



**ELEVATION G**



BrookfieldTX.com | 832-734-8857

The total number, layout, design and location of homes; unit mix; and the location, design and layout of recreational facilities may be changed due to a number of circumstances, including governmental requirements and market demand. Dimensions are approximate in nature and are not intended for final reference. Brookfield Residential and its affiliates reserve the right to change homesites, timelines, floor plans and home prices and make modifications in materials and specifications at any time without prior notice. © 2025 Brookfield Residential Properties ULC. All rights reserved. REV. FEB/2026



**MIDLINE**™