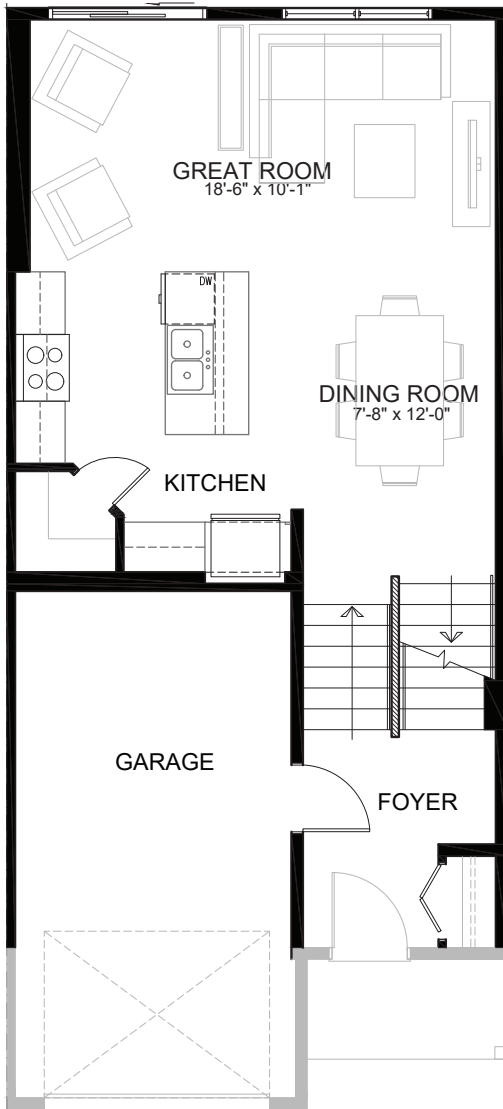


The Astoria



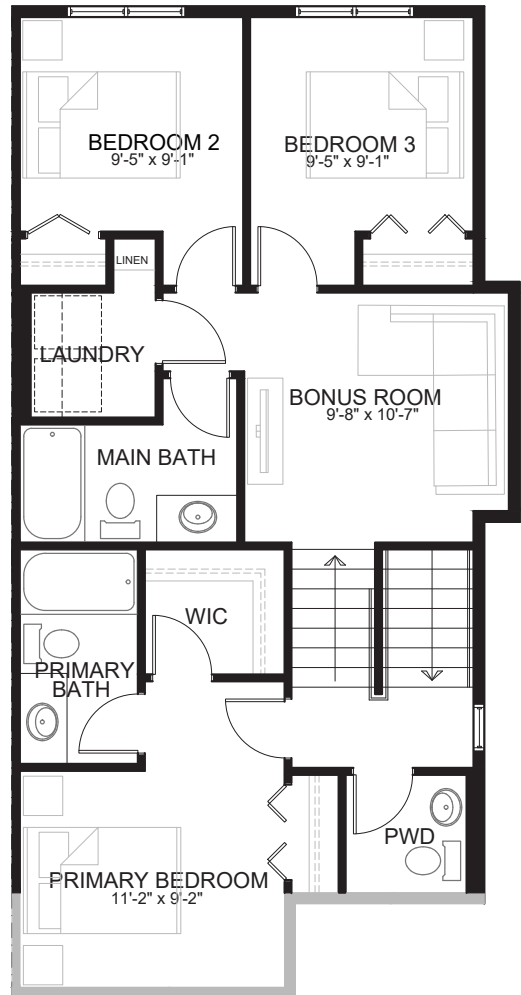
FROM 1,321 sq.ft.

MAIN FLOOR



NOTE: Refer to the elevations for window and front wall variations.

UPPER FLOOR



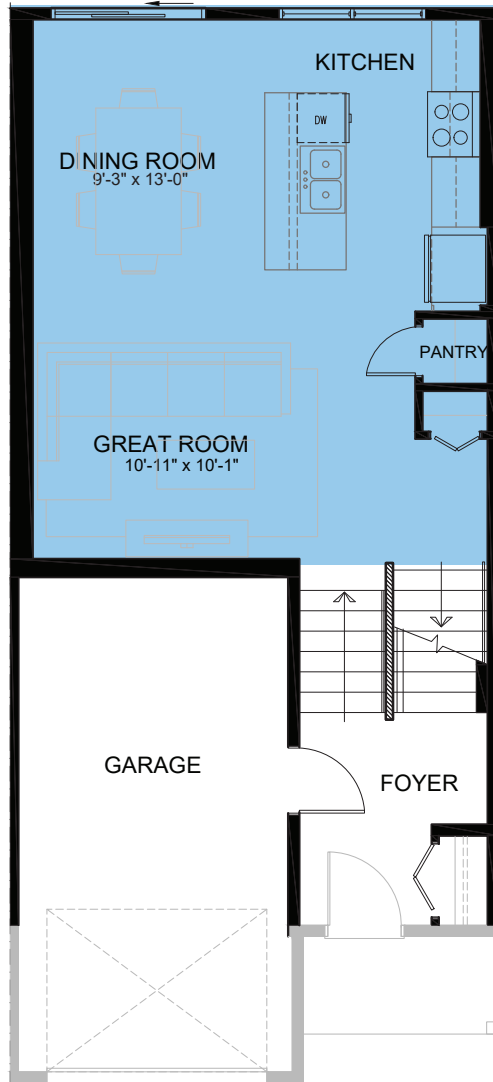
NOTE: Refer to the elevations for window and front wall variations.

Please see full disclaimer on the last page of this document.

Homes by **Brookfield Residential**



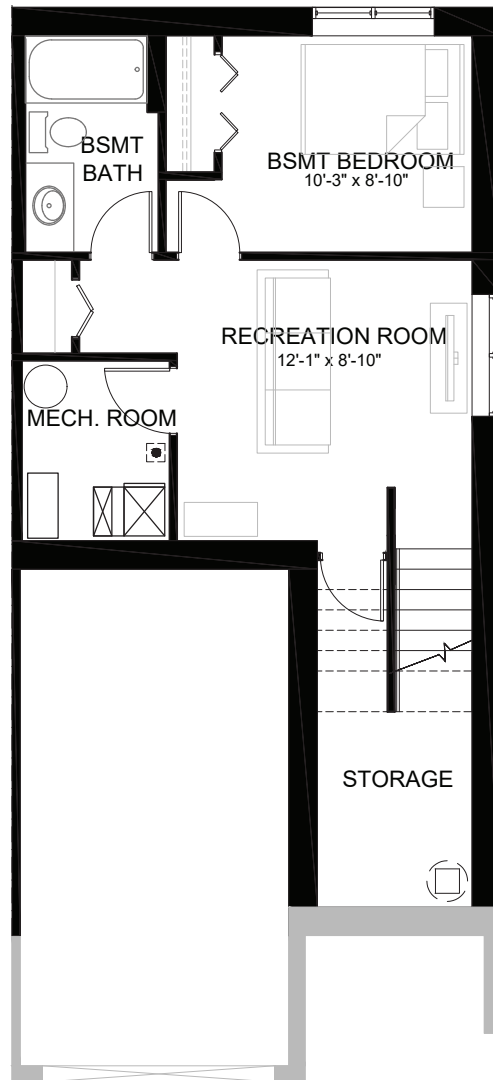
MAIN FLOOR
OPTIONAL REAR KITCHEN



NOTE: Refer to the elevations for window and front wall variations.

Please see full disclaimer on the last page of this document.

OPTIONAL BASEMENT
DEVELOPMENT
362 SQ.FT.



This design is published by Brookfield Residential, all rights reserved, and no permission or license is hereby being granted, including the reproduction of any image, information or the overall design in whole or part. Renderings and photos are for illustrative purposes only and may not reflect final product. Dimensions, square footage, and features shown are approximate and may change without notice. Price and availability subject to change without notice. Window locations may vary per building.

Room measurements shown are from the inside face of drywall; overall unit floor plan area is calculated from the outside of the exterior framing wall to the centre of the party wall at floor level. Please note a different measurement methodology may apply for (RECA & CREB) Residential Measurement Standards (RMS) than has been utilized for the purpose of this plan and therefore may yield a different overall area calculation. Brookfield Residential reserves the right to make modifications and changes to design and specifications without notice. E&OE. April 2023