

If you have recently submitted an auto claim to American Family Insurance, you may submit photos and an estimate (if available) from your shop of choice to help us evaluate the damages to your vehicle. You are not required to obtain an estimate for us to process your claim. In most cases, all you need to do is submit the requested photos of your vehicle and American Family Insurance can evaluate the damages to get your claim paid and processed quickly.

To assist you with this process, please utilize the Customer Photo Submission Form which outlines the photo requirements for your submission. Once you have submitted the requested photos/estimate, your Claims Adjuster will walk you through the next steps to expedite your auto claim.

Claim Information: Please Include in Email

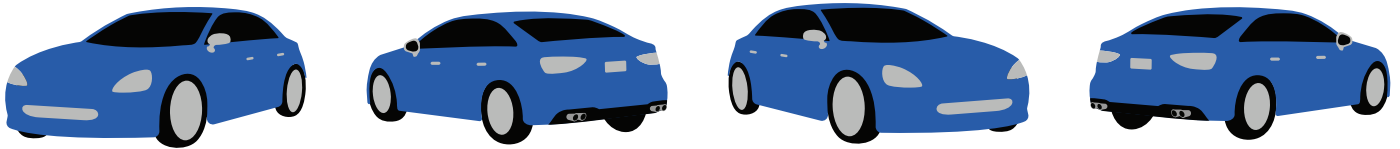
- 1) Claim # as subject line
- 2) Vehicle Owner Name
- 3) Year, Make, Model of Vehicle

Photo Requirements ***Photos must be medium to small resolution***

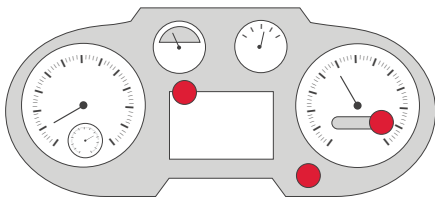
- 1) All Four Corners (Both Sides Visible in Photo): 4 photos
- 2) Mileage: 1 photo
- 3) Clear VIN Number (Driver Door Opening or Dash Plate): 1 photo
- 4) Overview of Damage area: 2-4 photos of Damage

Example Photos:

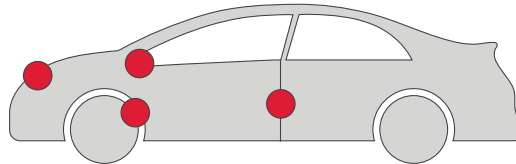
- 1) All Four Corners (Both Sides Visible in Photo) 4 Photos



- 2) Current Mileage: 1 Photo



- 3) VIN Number : 1 Photo



- 4) Overview of Damage Area: 2-4 photos of detailed shots

