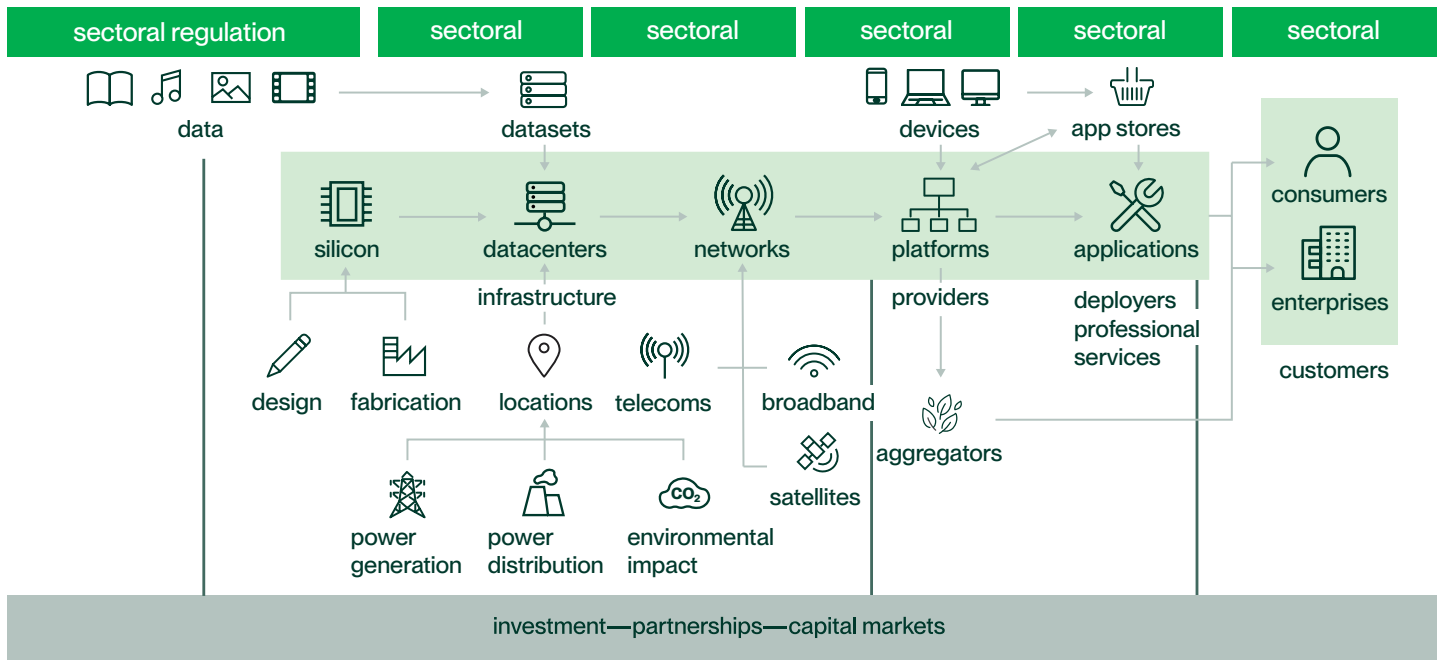


Horizontal regulation



From an AI sovereignty perspective, considerations can arise across the entire value chain, wherever control, dependency and jurisdictional exposure is embedded into the AI stack.

For example:

Data: businesses are seeking to unlock value in their data, which means navigating purpose limitation and special category restrictions (from a privacy perspective) as well as data localization and cross-border transfer restrictions while avoiding data leakage.

Foundation models: most businesses are focused on avoiding concentration risk with any one model, ensuring portability across models and preserving jurisdictional optionality.

Applications: businesses are on the front line of accountability for AI outcomes. Here, “sovereignty” means retaining effective control over how AI behaves as well as its impact on brand and customers.