



XHD MTP® Range

AFL's XHD (Extra High Density) range of MTP enclosures and cassettes offer 144F capacity in 1RU.

Enclosures to suit the XHD range are available in both sliding and fixed tray designs. The XHD range offers excellent high density finger access and patching accessibility.

All enclosures feature a removable rear mounting cable management bar. Hinged cable trays are supplied as standard with all sliding XHD enclosures and optional on the XHDT enclosure



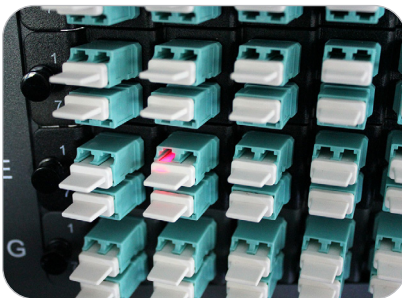
LC uniboot patch leads allow maximum access to the patching environment.

Features

- Extra High Density of 144F per 1RU (based on MTP-LC)
- Range of BASE-24 modules available to suit application
- MTP elite connectors used as standard for Low Loss performance
- 19" rack mountable enclosures available in fixed or sliding 1RU

Applications

- Data Centres
- Structured Cabling Networks
- Storage Area Networks



All AFL LC Duplex cassettes feature finger friendly, VFL traceable dust-caps

XHD MTP® Range

Cassette Ordering Information

IFC - **24** **MTPM** **LCQ** - **4** **XHD**

Series:
IFC = Infinity Fibre Cassette

Cassette Fibre Count:
24 = 24F
12 = 12F

Adapter Type (Front Interface):
LCQ = LC Quad


MTP Connector Type (Rear Interface):
MTPM = MTP Male (BASE-12, 12-Fibre MT ferrules)¹
MTPMA = MTP Male Angled (BASE-12, 12-Fibre MT ferrules)²
MTP2M = MTP Male (BASE-24, 24-Fibre MT ferrule)¹
MTP2MA = MTP Male Angled (BASE-24, 24-Fibre MT ferrule)²

Platform:
XHD = XHD Platform


Fibre Type:
1 = SM, Single-mode
4 = OM4, Multimode

Notes:


1. 'MTPM' and 'MTP2M', MM only.
2. 'MTPMA' and 'MTP2MA', SM only.



IFC-24MTPMLCQ-4XHD
OM4 24 Fibre MTPM-
LC Quad XHD Cassette



IFC-24MTPMALCQ-1XHD
SM 24 Fibre MTPMA-
LC Quad XHD Cassette


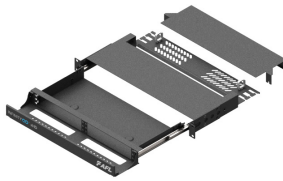



IFC-24MTP2MLCQ-4XHD
OM4 24 Fibre MTPM-
LC Quad XHD Cassette

Cassette Loss Performance (Total LC and MTPE Insertion Loss)

OPTIONS	SM OS2 (@1310nm)	MM OM3/4 (@850nm)
Average Insertion Loss	0.25 dB	0.20 dB
Maximum Insertion Loss	0.60 dB	0.55 dB

Enclosures and Accessories

ENCLOSURES		
FRE-1RU-MOD-XHDT	1RU 6 aperture fixed tray with removable rear cable looming bar. 200mm depth	
FRE-1RU-MOD-XHDFS	1RU 6 aperture flat front tray with hinged front cover and removable rear cable looming bar and cover. 290mm depth (390mm with front mount hinged cover)	
4X 6F CASSETTES		
XHD-1-424-LCBU	SM 24F (4x 6F) MTPMA-LC Quad XHD Cassette	
XHD-4-424-LCAQ	OM4 24F (4x 6F) MTPM-LC Quad XHD Cassette	

XHD MTP® Range

Enclosures and Accessories

ACCESSORIES		
IFC-MTP08XHD-FL-BK	8 port MTP adapter panel, black adapters	
IFC-MTP08XHD-FL-AQ	8 port MTP adapter panel, aqua adapters	
FRE-BLANK-XHD	Blanking panel for unused ports	
FRE-1RU-CTRAY-HG	Hinged front mount cable tray - to suit 1RU 'MOD-XHDT' style frames 430mm width x 100mm depth	
FRE-CTRAY-1-CLP	Patch cord retention clip and bracket kit, for 1RU cable tray (Set of 2) Compatible with: • Front cable tray on 'FRE-1RU-MOD-XHDFS' • 'FRE-1RU-CTRAY-HG' on 1RU 'MOD-XHDT' style frames	
FRE-CTRAY-1-PBL/R-K	Patch cord retention block and bracket kit, for 1RU cable tray (Set of 2) Compatible with: • Front cable tray on 'FRE-1RU-MOD-XHDFS' • 'FRE-1RU-CTRAY-HG' on 1RU 'MOD-XHDT' style frames	

