

DOSSERT®

Type MTRC, MTR2C, and MTR3C

Multiple Tie Transformer Connector

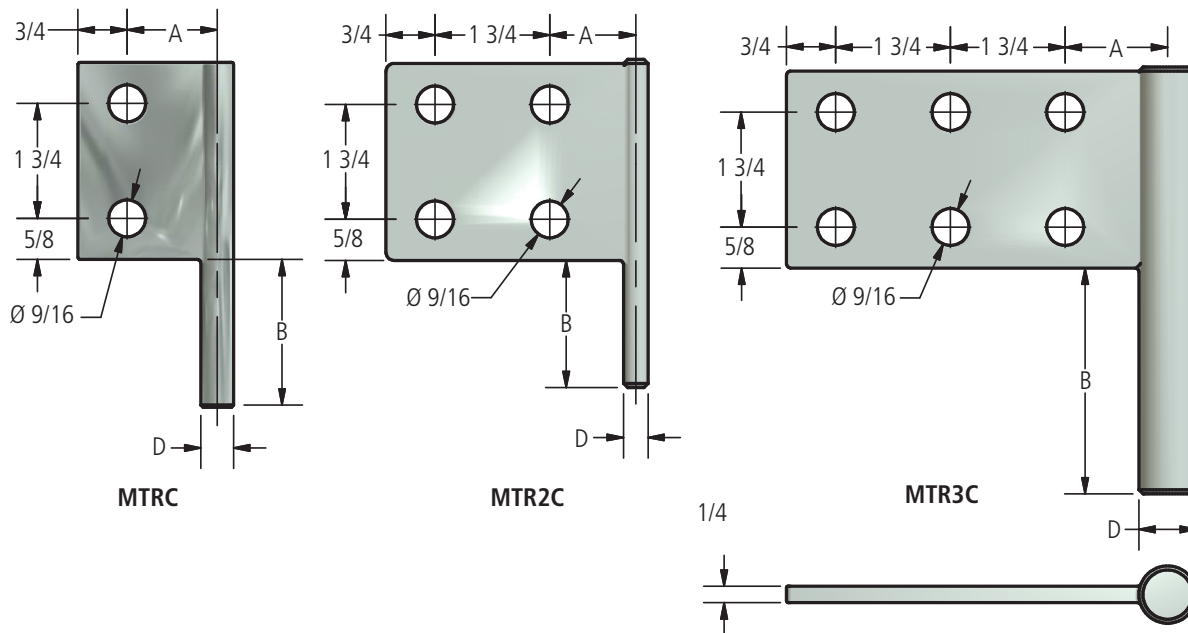
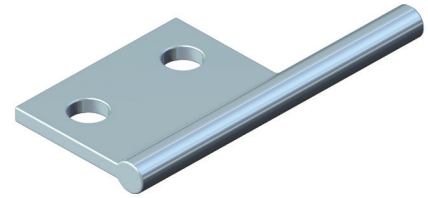
A multiple tie transformer connector which provides a convenient means of connecting a number of cables to a single transformer terminal. Allows maximum conductor sizes to be run directly to the transformer, thereby minimizing voltage drop.

Material

Tin plated copper

Hardware

- MTR2C: Four hole NEMA standard drilled contact.
- MTR3C: Six hole NEMA standard drilled contact.



Ordering Information

CATALOG NUMBER			DIMENSIONS IN INCHES		
MTRC	MTR2C	MTR3C	A	B	D
MTRC-38	MTR2C-38	MTR3C-38	1 3/8	2	3/8
MTRC-56	MTR2C-56	MTR3C-56	1 1/2	2 1/4	9/16
MTRC-75	MTR2C-75	MTR3C-75	1 9/16	2 3/4	3/4
MTRC-88	MTR2C-88	MTR3C-88	1 5/8	3 1/2	7/8
MTRC-112	MTR2C-112	MTR3C-112	1 3/4	4	1 1/8

DOSSERT®

TYPE Q2TE, Q3TE, Q4TE

Cast Copper multiple tee connector for securing a number of cables to a single transformer terminal.

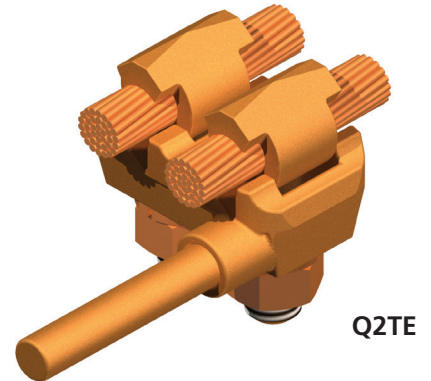
A cast type multiple tee connector for securing a number of cables to a single transformer terminal. Each cable clamping position is designed to receive a wide range of conductor sizes. Installation of each cable is simply accomplished by insertion of cable into eyebolt member and tightening nut with a single wrench. Body is of high conductivity copper alloy and eyebolt elements are of high strength bronze with silicon bronze nuts and lockwashers.

Material

Copper Alloy

Hardware

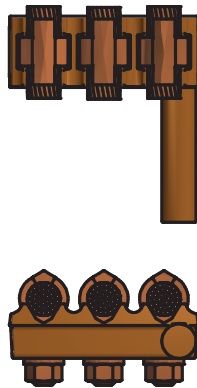
Everdur nut and lockwashers.



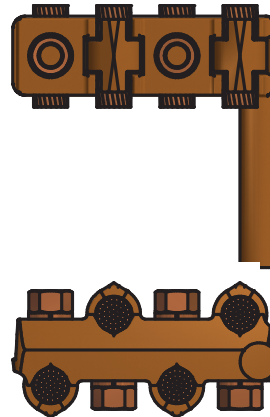
Q2TE



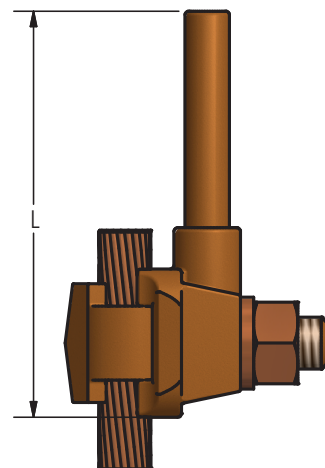
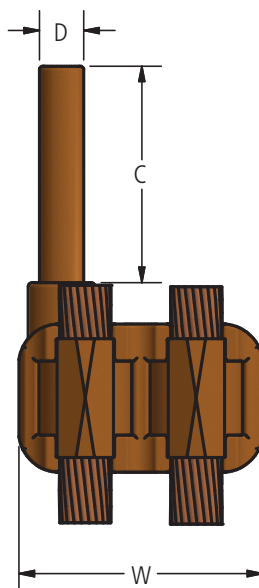
Q2TE



Q3TE



Q4TE



DOSSERT®

TYPE Q2TE, Q3TE, Q4TE

Cast Copper multiple tee connector for securing a number of cables to a single transformer terminal.

Ordering Information

CATALOG NUMBER	CABLE RANGE	DIMENSIONS IN INCHES			
		C	D	L	W
Q2TE-13	8 Solid- 2/0 Stranded	2	3/8	3 5/8	2 1/8
Q3TE-13	8 Solid- 2/0 Stranded	2	3/8	3 5/8	3 1/4
Q4TE-13	8 Solid- 2/0 Stranded	2	3/8	3 5/8	3 3/4
Q2TE-25	6 Solid- 250 kcmil	2 1/4	9/16	4 1/8	2 5/8
Q3TE-25	6 Solid- 250 kcmil	2 1/4	9/16	4 1/8	3 7/8
Q4TE-25	6 Solid- 250 kcmil	2 1/4	9/16	4 1/8	4 1/2
Q2TE-35	2 Solid- 350 kcmil	2 3/4	3/4	4 1/2	2 3/4
Q3TE-35	2 Solid- 350 kcmil	2 3/4	3/4	4 1/2	4 1/8
Q4TE-35	2 Solid- 350 kcmil	2 3/4	3/4	4 1/2	4 7/8
Q2TE-50	1/0 Solid- 500 kcmil	3 1/2	7/8	5 3/4	3 1/8
Q3TE-50	1/0 Solid- 500 kcmil	3 1/2	7/8	5 3/4	4 7/8
Q4TE-50	1/0 Solid- 500 kcmil	3 1/2	7/8	5 3/4	5 7/8
Q2TE-100	2/0 Solid- 1000 kcmil	4	1 1/8	6 3/8	4
Q3TE-100	2/0 Solid- 1000 kcmil	4	1 1/8	6 3/8	5 7/8
Q4TE-100	2/0 Solid- 1000 kcmil	4	1 1/8	6 3/8	7 5/8

DOSSERT®

TYPE Q2TS, Q3TS, Q4TS

Cast Copper multiple tee connector for securing a number of cables to a single transformer terminal.

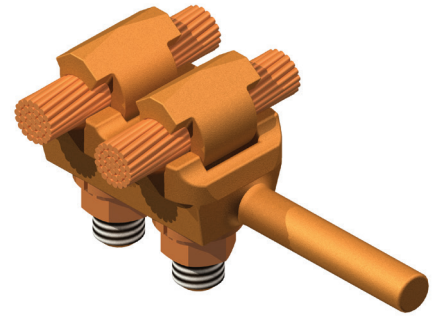
A cast type multiple tee connector for securing a number of cables to a single transformer terminal. Each cable clamping position is designed to receive a wide range of conductor sizes. Installation of each cable is simply accomplished by insertion of cable into eyebolt member and tightening nut with a single wrench. Body is of high conductivity copper alloy and eyebolt elements are of high strength bronze with silicon bronze nuts and lockwashers.

Material

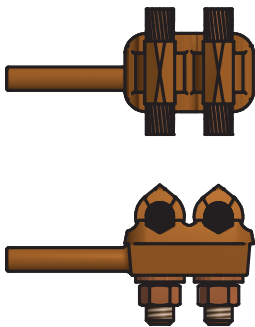
Copper Alloy

Hardware

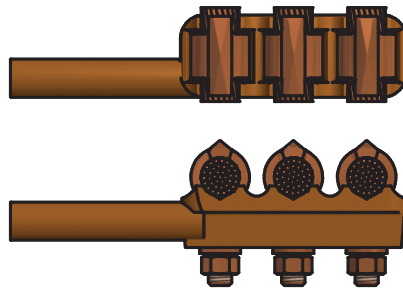
Everdur nut and lockwashers.



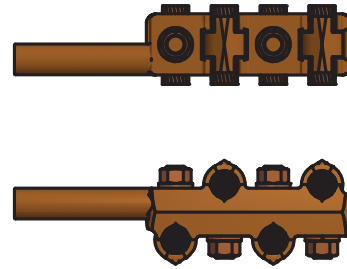
Q2TS



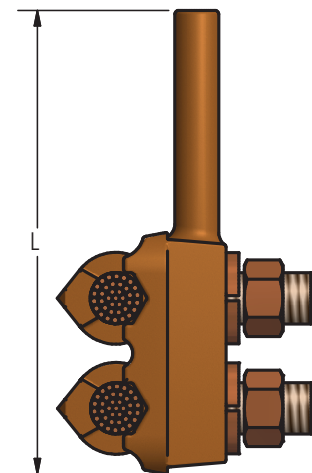
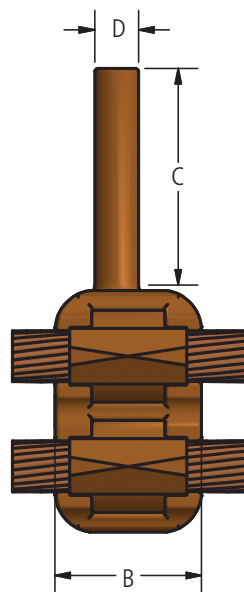
Q2TS



Q3TS



Q4TS





Bronze Grounding Connectors and Everdur Hardware

DOSSERT®

TYPE Q2TS, Q3TS, Q4TS

Cast Copper multiple tee connector for securing a number of cables to a single transformer terminal.

Ordering Information

CATALOG NUMBER	CABLE RANGE	DIMENSIONS IN INCHES			
		B	C	D	L
Q2TS-13	8 Solid- 2/0 Stranded	1 1/2	2	3/8	4 3/8
Q3TS-13	8 Solid- 2/0 Stranded	1 1/2	2	3/8	5 1/4
Q4TS-13	8 Solid- 2/0 Stranded	1 1/2	2	3/8	6 1/8
Q2TS-25	6 Solid- 250 kcmil	1 5/8	2 1/4	9/16	5
Q3TS-25	6 Solid- 250 kcmil	1 5/8	2 1/4	9/16	6 3/8
Q4TS-25	6 Solid- 250 kcmil	1 5/8	2 1/4	9/16	7 1/8
Q2TS-35	2 Solid- 350 kcmil	1 11/16	2 3/4	3/4	5
Q3TS-35	2 Solid- 350 kcmil	1 11/16	2 3/4	3/4	6 3/8
Q4TS-35	2 Solid- 350 kcmil	1 11/16	2 3/4	3/4	7 1/8
Q2TS-50	1/0 Solid- 500 kcmil	1 3/4	4	7/8	7 1/4
Q3TS-50	1/0 Solid- 500 kcmil	2 1/8	3 1/2	7/8	8 1/2
Q4TS-50	1/0 Solid- 500 kcmil	2 1/8	3 1/2	7/8	9 1/8
Q2TS-100	2/0 Solid- 1000 kcmil	2 1/4	4	1 1/8	8 1/8
Q3TS-100	2/0 Solid- 1000 kcmil	2 1/4	4	1 1/8	10 1/8
Q4TS-100	2/0 Solid- 1000 kcmil	2 1/4	4	1 1/8	11 7/8

DOSSERT®

TYPE TGC

Grounding Connector For Cable To Transformer Ground Pad

This connector is designed for transformer grounding pads. Connector stud possesses a slight taper to insure sound electrical contact without need for locking devices. Designed specifically for use on all standard EE-1-NEMA distribution transformers.

Material

Copper Alloy

Hardware

Everdur nuts and lockwashers

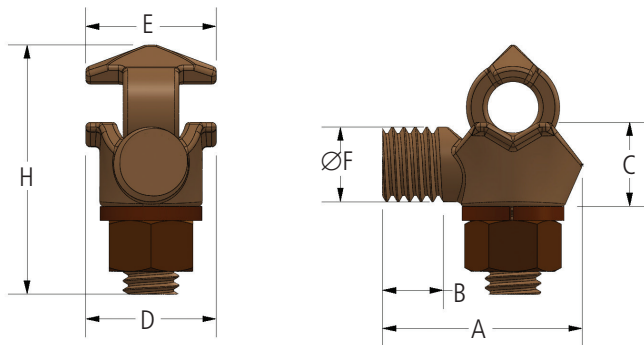
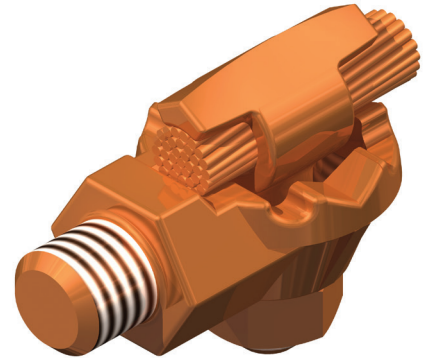


FIG. 1

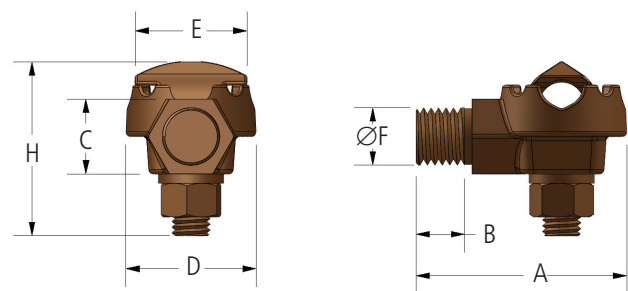


FIG. 2

Ordering Information

CATALOG NO.	FIG. NO.	ACSR RANGE		DIMENSIONS IN INCHES							BOLT SIZE
		MIN	MAX	A	B	C	D	E	F	H	
TGC8-50	1	#10 SOL	#1 STR	1 3/8	11/32	9/16	7/8	7/8	1/2"-13	1 5/8	3/8
TGC13-50P	2	#8 SOL	2/0 STR	2 11/16	3/8	3/4	1 13/64	1 1/8	1/2"-13	1 4/5	3/8
TGC25-50	2	#6 STR	250 MCM	2 3/8	3/8	3/4	1 9/16	1 1/2	1/2"-13	2 11/32	1/2
TGC25-75	2	#6 STR	250 MCM	2 13/16	21/32	1	1 3/4	1 1/2	3/4"-10	2 11/32	1/2