

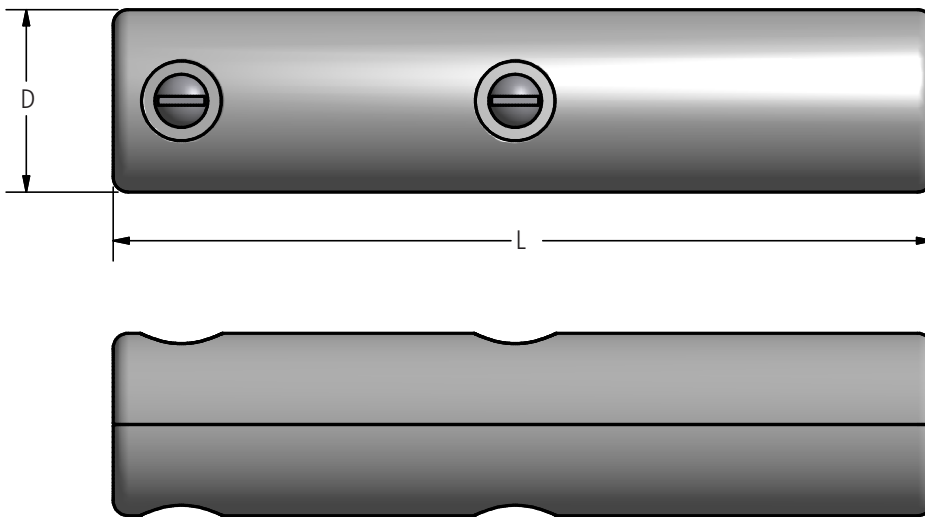
DOSSERT®

Type LLA-2P2 Limiter Terminal Shell for Use with Limiter Terminal Assembly Types LLA-2R123, LLA-2PL, LLA-2P123, and LLA-2PL123

A composition molded shell consisting of two symmetrical halves assembled with machine screws and nuts. Internal cavities and heat confining barriers permit fusible section of limiter to clear circuit without damage to surrounding insulation.



Underground



Ordering Information

CATALOG NUMBER	CABLE RANGE	DIMENSIONS IN INCHES	
		D-DIAMETER	L
LLA25-2P2	4/0 STR - 250 MCM	1 1/2	5 3/4
LLA50-2P2	300 MCM - 500 MCM	1 7/8	7 1/16
LLA75-2P2	750 MCM	1 7/8	7 1/16