



Apex® X-3H Sealed Splice Closure

The Apex X-3H is a sealed splice closure designed for protecting optical fiber splices in both above- or below-grade applications in a butt configuration. The Apex X-3H is capable of up to 1728 mass fusion with standard ribbon or 6912 (200 μm, 3456 max for 250 μm) mass fusion with “rollable ribbon” fiber types such as AFL’s SpiderWeb Ribbon® (SWR®). Cables are sealed by a unique wedge system spaced evenly around the circumference of the closure’s base. Each cable seal is opened by a press-to-release lever and sealing is completed by actuating a single screw for each cable. Each cable is sealed individually, ensuring original craftsmanship when cables may be added at a later date. Up to 8 splice trays are attached and hinge off a central organizer. A plastic slack storage basket resides underneath the trays with ample tie down points for managing tube and fiber slack.



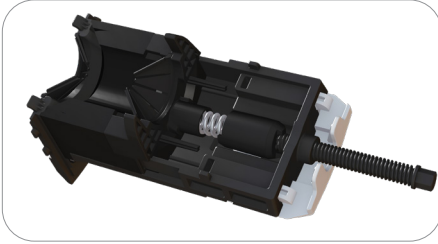
Features

- Individual cable sealing ports with tool-less release mechanism and gel sealing
- Hinging, lockable splice trays
- Plastic slack storage basket designed for high count WTC with SWR and other rollable ribbon cable
- Six cable ports with up to six ground lugs
- Optimized for 6912 200 μm fiber end splice
- Splice trays with universal splice modules capable of holding single fusion, mass fusion and mechanical splices as well as other devices such as passive optical splitters
- Dome-to-base O-ring seal retained into dome to prevent loss or damage, but is still replaceable if necessary

Specifications

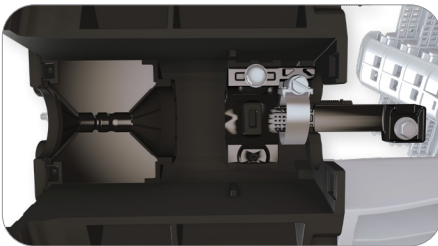
PARAMETER	VALUE
Dimensions – L x D, in (cm)	32.0 x 14 (81.3 x 35.6)
Weight, No Trays – lb (kg)	30 (13.6)
Splice Capacity – Mass (SWR), Mass (Standard)	6912, 1728
Splice Tray Capacity	8
Cable Diameter, Single Port, in (mm)	0.40" - 1.38" (10.16 - 35.052)
Application	Handhole, Aerial, Pole/Wall, Direct Bury

Apex® X-3H Sealed Splice Closure



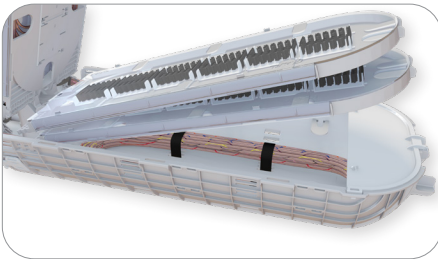
Gel Sealing

Individual wedges located evenly around the circumference of the base are removed with the press of a button. When cables are in place and ready to be sealed, the gel is compressed by a single screw, decreasing installation time. Individual port seals ensure cables never become unsealed when adding new cables at a later date.



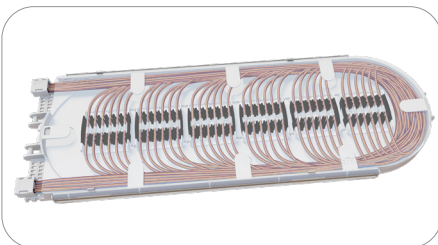
Cable Entry Ports and Cable Attachment Unit (CAU)

The cable entry ports surrounding the circumference of the base accept single cables from 0.4" to 1.38" in diameter. Additionally, each port has the capability to be paired with its own grounding lug if necessary. Closures can be configured with enough strain relief kits for 0 to 6 cables from the factory. For closures with less than 6, additional cables can be added through the use of additional cable strain relief kits sold separately.



Slack Storage

A molded slack storage basket allows for use of the entire cross section of the closure to maximize storage.



Splice Trays with Modular Splice Holders

Apex X-3H round splice trays are organized in a hinging array that automatically lock when tilted to the upward position for easy access to the splice trays and slack storage below. The Apex X-3H round splice trays are only compatible with the X-3H closure. The universal splice module holds up to 24 single fusion, 6 mass fusion or 12 mass fusion double-stacked when using SWR, or 6 mechanical splices as well as devices such as PLC splitters. This eliminates the need for specifying and stocking multiple splice trays for multiple applications.

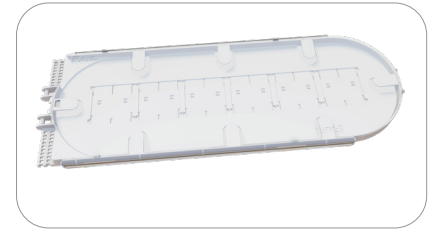
Ordering Information

AX	—	3H	—	B	—	L	—	0	—	2	—	6	—	X
APEX CLOSURES		CLOSURE SIZE		BASKET TYPE		TRAY TYPE		NUMBER OF TRAYS		CABLE STRAIN RELIEF HARDWARE KITS		NUMBER OF GROUND LUGS		INNER BASKET
		3H = X-3H Size		B = X-3H Sized Basket		X = No preinstalled tray L = X-3 Square Tray Loaded with splice modules		0 OR 8		0 1 2 3 4 5 6		0 1 2 3 4 5 6		X = No Inner Basket

Apex® X-3H Sealed Splice Closure

Splice Trays and Splice Modules

Apex X-3H closures utilize X-3H round splice trays. Trays can be ordered empty or fully loaded with splice modules. For “rollable” type ribbon such as AFL’s SpiderWeb Ribbon®, trays can be fully loaded for 72 double-stacked mass splices, or 864 fibers per tray. For standard ribbon, AFL recommends half loaded for 18 mass splices single-stacked, or 216 fibers.



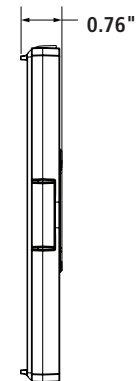
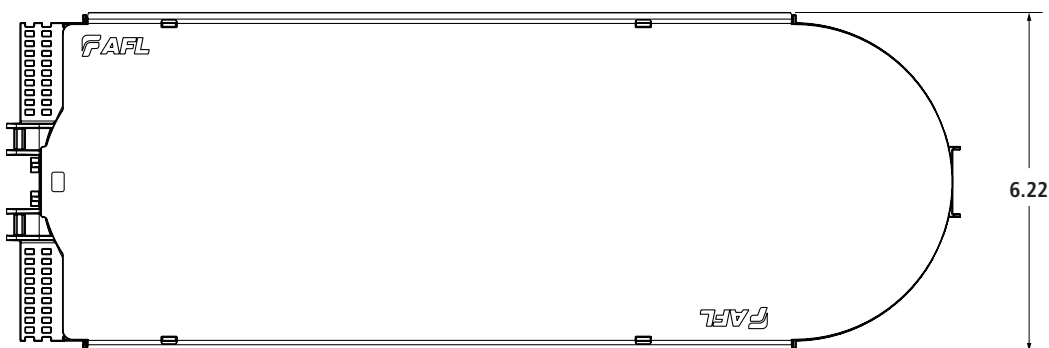
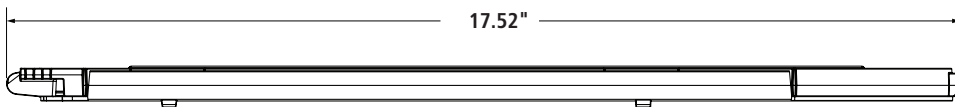
Ordering Information

DESCRIPTION	MASS	AFL NO.
	X-3H Tray Fully Loaded with Six (6) Splice Modules (864 fibers per tray only recommended for rollable ribbon, e.g. AFL SWR)	864**
Additional splice module (18 single fusion triple stacked, 12 mass fusion double stacked, 6 mechanical) – Pack of 20	–	AX-TRAY-MOD-20
X-3H Round Tray Empty	–	AX-TRAY-3-R-E
FP-40 40 mm Single Fiber Slim Protection Sleeve	–	S018262
FP-60 60 mm Single Fiber Slim Protection Sleeve	–	S018263

* 864 fibers per tray with mass fusion (6912 total closure capacity) only recommended for 200 μm type rollable ribbon. For 250 μm, cut capacity in half with single-stacking.

** When using AFL’s Slim Protection Sleeves

Dimensions



Apex® X-3H Sealed Splice Closure

Installation Kits and Accessories

The AFL Apex closure line has a variety of installation accessories kits to fit many applications. Additional accessories may be available. Contact AFL.



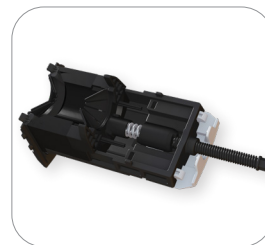
CAU Kit



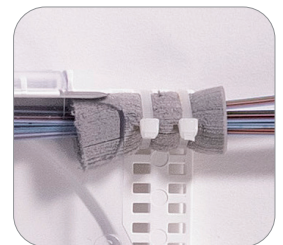
Ring Clamp Replacement Kit



O-Ring Grease Kit



Wedge Replacement Kit



Foam Retention

Ordering Information — Replacement Kits

DESCRIPTION	AFL NO.
REPLACEMENT KITS	
X-3 and X-3H Single Cable Strain Relief/Cable Attachment Unit (CAU) Kit	AX-KIT-CBLSTRN-3
X-3 and X-3H Dome-to-Base Locking Ring Clamp Replacement Kit	AX-KIT-CLAMP-3
X-3 and X-3H Dome Replacement Kit	AX-KIT-DOME-3
X-3 and X-3H Inner Base Gel Replacement Kit	AX-KIT-GEL-3
Apex O-Ring Grease, Pack of 10	AX-KIT-GREASE-10
X-3 and X-3H Dome to Base O-Ring Replacement Kit	AX-KIT-ORING-3
X-3 and X-3H Wedge Replacement Kit	AX-KIT-WEDGE-3
WTC-SWR Bundle Splice Tray Retention Kit - Includes 25 foam grommets for retaining SWR bundles to splice trays	HW000406
Velcro, 75 Foot Length Roll – For securing SWR bundles in the slack basket	FC001759



Apex Aerial Hanger Bracket



Apex Pole/Wall Mount



Adjustable Aerial Hanger Bracket



Mesh Transition Tubing



Universal Installation Stand

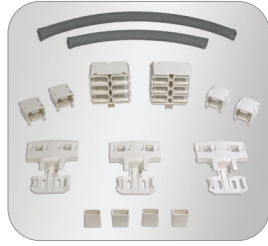
Ordering Information — Accessories

DESCRIPTION	AFL NO.
ACCESSORIES	
X-3 and X-3H Pole/wall mount kit	AX-BR33
Aerial strand mount hanger kit	AX-KIT-AERIAL-1
Adjustable Aerial Strand Mount Hanger kit	AX-KIT-AERIAL-ADJ
ADSS Aerial hanger brackets	AX-KIT-AERIAL-ADSS
X-3 and X-3H Multi-Drop Cable Entry Kit (fits up to 4 cables 0.20" to 0.39" in diameter or flat drop cable)	AX-KIT-DROP-4-3
Apex Internal Multiple Ground Bonding Kit	AX-KIT-GNDLD-5
Apex Cable Bonding Kit (Bonds armored cable sheath to ground) – Pack of 10	AX-KIT-GROUND-10
1/4" Colored Mesh Transition Tubing, 250' Spool (*Replace "XX" with color per TIA-598 color code - BL, OR, GR, BR, SL, WH, RD, BK, YL, VI, RS or AQ)	AX-KIT-TUBE-014-XX*
Apex Universal Installation Stand	AX-KIT-U-STAND

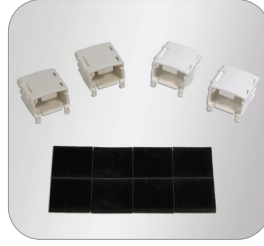
Apex® X-3H Sealed Splice Closure



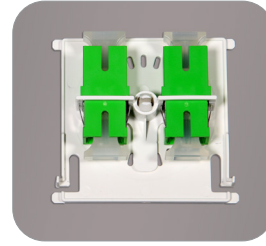
Silicone Spiral Wrap



AFRS Kit 1



AFRS Kit 2



SC Bulkhead Adapter Kit



Replacement Slack Storage Basket Tabs

Ordering Information — Accessories

DESCRIPTION	AFL NO.
ACCESSORIES	
Silicone Spiral Wrap, 5.5 Foot Length	FC001657
Apex Advanced Fiber Retention System (AFRS) Kit 1 – Used for Ribbon Cable (Flat Matrix, SWR, Tubed, Central Core). Kit includes: Mesh Basket Adapter (2 ea.), Mesh Housing (2 ea.), Mesh Insert (24 ea.), V-Clips (12 ea.), and Clean Cut Gray Mesh (13 ft.).	AX-KIT-AFRSRBN
Apex AFRS Kit 2 – Used for Loose Tube Cable. Kit includes: V-Clip (24 ea.) and Retention Pads (6 sheets of 8 pads)	AX-KIT-AFRSLT
Apex AFRS Kit 3 – V-Clip bulk kit. Includes: V-Clips (120 ea.) and Mesh Inserts (120 ea.)	AX-KIT-AFRSVC-120
Apex AFRS Kit 4 – Mesh bulk kit. Includes: Clean Cut Gray Mesh (100 ft.)	AX-KIT-AFRSMESH-100FT
Apex AFRS Kit 5 – Mesh Housing bulk kit. Includes: Mesh Basket Adapter (10 ea.) and Mesh Housing (10 ea.)	AX-KIT-AFRSAH-10
Apex AFRS Kit 6 – Mesh Basket Adapter bulk kit. Includes: Mesh Basket Adapter (10 ea.)	AX-KIT-AFRSA-10
Apex Bulkhead Kit with Plate SC/APC Adapters, 1 kit	AX-TRAY-ASC
Apex Bulkhead Kit with Plate with SC/UPC Adapters, 1 kit	AX-TRAY-USC
Apex Bulkhead Kit with Plate SC/APC Adapters, 6 pc kit	AX-TRAY-ASC-6
Apex Bulkhead Kit with Plate SC/UPC Adapters, 6 pc kit	AX-TRAY-USC-6