

# Switchblade® FCV-2 Fiber Containment Vault

The Tier 22 Switchblade Fiber Containment Vault is a cutting-edge solution designed for efficient fiber optic cable storage and deployment. Built with innovation in mind, this vault features a unique folding design that dramatically reduces shipping costs and storage space footprint, making it ideal for businesses with high-volume logistics and storage needs. When ready for deployment, the Switchblade Vault unfolds with ease, allowing for quick and seamless transition from storage to field use.

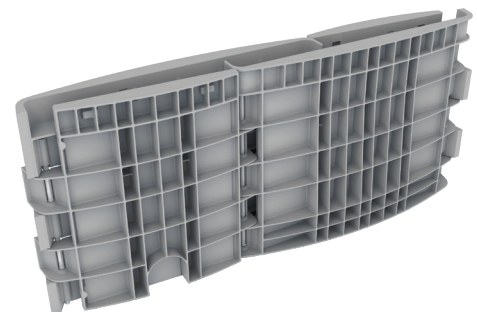
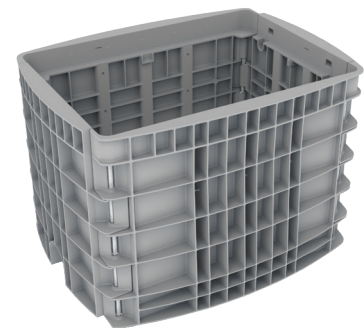
When combined with other AFL products, the Switchblade FCV-2 24"x36" vault can comfortably hold 3,456F of spliced fibers using the Apex® X-2 splice closure and SpiderWeb Ribbon® (SWR®) cable, or multiple TITAN RTD® Multiport Terminals on a mounting bracket.

## Features

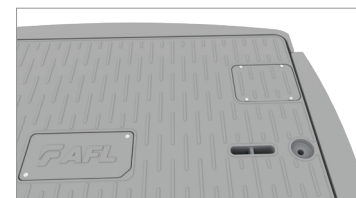
- Hinged corners to allow folding with screw locking mechanism
- Meets ANSI-77 Tier 22 loading requirements
- "Cleated" lid to help ensure lid stays in place
- Mouse hole knockouts to bring in conduit
- Accessory accommodations:
  - Latching option on lid
  - Lid RFID locator attached to lid
  - Provisions for cable support racks
  - Provisions for closure hanging bar
  - Interchangeable customer name plate

## Benefits

- **Folding Design**  
The compact, foldable construction makes shipping and storage significantly more efficient, saving valuable space and reducing costs.
- **Fast Deployment**  
The vault's user-friendly design ensures a rapid setup, allowing technicians to quickly move from inventory to the field, minimizing downtime.
- **Durable Construction**  
Crafted from high-quality materials, the Switchblade Vault offers reliable protection and secure containment for fiber optic cables, ensuring long-lasting performance in demanding environments.
- **Scalable Capacity**  
Accommodates a wide range of cable quantities and configurations, providing flexibility to meet diverse operational needs.
- **Field-Ready**  
Designed for the challenges of the field, this vault is both rugged and easy to transport, making it a perfect solution for fiber optic deployment teams.
- **Non-conductive and non-corrosive**
- **Made in the USA**



Folded for Ease of Shipping and Storage



Standard Lid without Latch



Lid with Optional Slam Latch



BABA/BEAD compliant configurations and part numbers indicated where applicable. Non-compliant items may be eligible for BEAD De Minimis waiver. For complete list of compliant part numbers, see [AFL BEAD Program Compliant Equipment List](#) on our website.

continued  
→

# Switchblade® FCV-2 Fiber Containment Vault

## Specifications

PARAMETER	DESCRIPTION
Dimensions (External)	31" W x 41" L x 27" D (35" Extended)
Dimensions (Internal)	24" W x 36" L x 24" D (32" with extension)
Dimensions (Folded)	Standard: 11" W x 63" D x 27" H Extended: 11" W x 63" D x 35" H
Weight – lbs	Base: 80 lbs Extended Base: 100 lbs Tier 22 Lid: 55 lbs

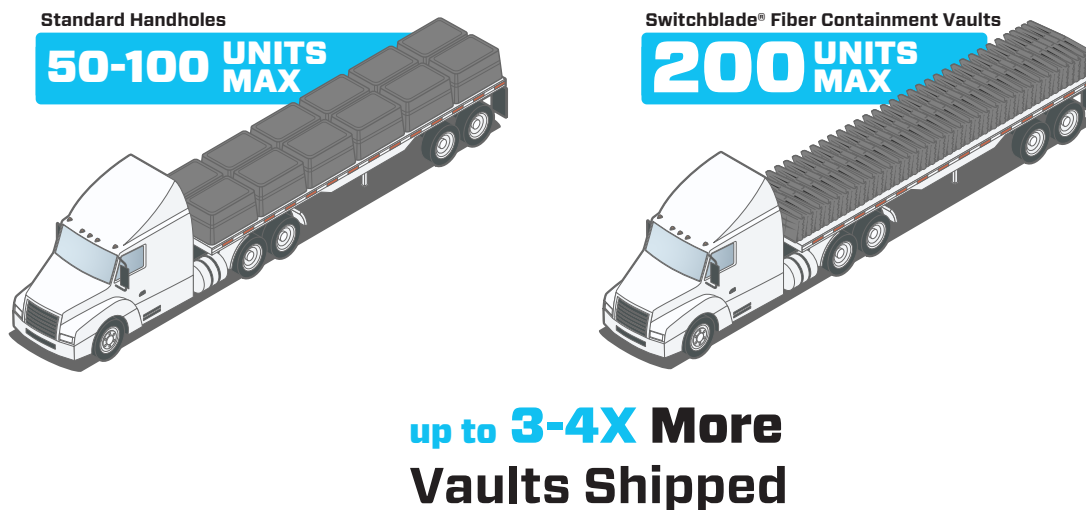
## Qualifications

Governing Body	Standard Code
ANSI	SCTE 77 2017
Test Rating – lbf	Tier 22: 33,750 lbf

The collapsible design of Switchblade fiber containment vaults delivers unmatched transportation and storage space efficiency when compared to traditional vaults.

## Freight Cost Comparison

Standard 53-ft trucks can transport a total of 200 Switchblade fiber containment vaults on a full truck load (FTL). By comparison, an FTL of traditional vaults is maxed at approximately 50-100 total vaults. Utilizing fewer trucks to deliver more equipment in less deliveries contributes to increased project profitability. Fewer trucks also consume less fuel resulting in positive environmental and sustainability impacts.



Vault Type with T22 Lid	FTL Delivery Qty	Max. Vaults Per Truck	No. of FTL 53' Trucks	Est. Weight (lbs) per Truck	Est. Freight Per Vault
AFL Switchblade 24"x36"x24"	600	200	3	27,000	\$25.00
Traditional HDPE/Composite 24"x36"x24"	600	100	6	13,200	\$35.00
Traditional Concrete 24"x36"x24"	600	100	6	32,500	\$70.00



BABA/BEAD compliant configurations and part numbers indicated where applicable. Non-compliant items may be eligible for BEAD De Minimis waiver. For complete list of compliant part numbers, see [AFL BEAD Program Compliant Equipment List](#) on our website.

continued  
→

# Switchblade® FCV-2 Fiber Containment Vault

## Inventory and Storage Space Savings

Switchblade palletized loads are up to 60% lower in height (26") versus typical vault pallets (72") allowing more pallets to be stacked for significant storage space and cost savings.



Vault Type with T22 Lid	Storage Area	Stored Vault Qty
AFL Switchblade 24"x36"x24"	1,275 sq. ft.	600*
Traditional HDPE/Composite 24"x36"x24"	1,275 sq. ft.	300*
Traditional Concrete 24"x36"x24"	1,275 sq. ft.	300*

\* Based on maximum stacked pallet height of 78"

## Ordering Information – Base with Lid

FCV-2	22	XL	24	X	X	X	XX
Family Size	Tier	Lid	Internal Depth	Lid Latch	Locator	Cable Racks	Lid Logo
FCV-2 = 24x36 BCV-2 = BABA compliant 24x36	22 = Tier 22	XL = One-piece Lid	24 = 24 inches 32 = 32 inches	X = No Latch S = Slam Latch	X = No Locator L = Locator	X = No Racks R = Racks	XX = Blank CM = Communication * Contact AFL for custom logos

## Ordering Information – Lid Only

FCV-2-LID	22	X	L	XX
Lid Family Size	Tier	Latch	Locator	Lid Logo
FCV-2-LID = 24x36 BCV-2-LID = BABA compliant 24x36	22 = Tier 22	X = No Latch S = Slam Latch	X = No Locator L = Locator	XX = Blank CM = Communication * Contact AFL for custom logos

## Ordering Information – Base Only

FCV-2-BASE	24	X
Base Family Size	Internal Depth	Cable Racks
FCV-2-BASE = 24x36 BCV-2-BASE = BABA compliant 24x36	24 = 24 inches 32 = 32 inches	X = No Racks R = Racks



BABA/BEAD compliant configurations and part numbers indicated where applicable. Non-compliant items may be eligible for BEAD De Minimis waiver. For complete list of compliant part numbers, see [AFL BEAD Program Compliant Equipment List](#) on our website.