

# Switchblade® FCV-1 Fiber Containment Vault

The Tier 22 Switchblade Fiber Containment Vault is a cutting-edge solution designed for efficient fiber optic cable storage and deployment. Built with innovation in mind, this vault features a unique folding design that dramatically reduces shipping costs and storage space footprint, making it ideal for businesses with high-volume logistics and storage needs. When ready for deployment, the Switchblade Vault unfolds with ease, allowing for quick and seamless transition from storage to field use.

When combined with other AFL products, the 17"x30" Switchblade FCV-1 Fiber Containment Vault can hold up to 864F spliced fibers with the Apex® X-1/X-2S Splice Closures and Wrapping Tube Cable (WTC) with SpiderWeb Ribbon® (SWR®) —or multiple AFL RTD™ Terminals – Powered by Prodigy®.

## Features

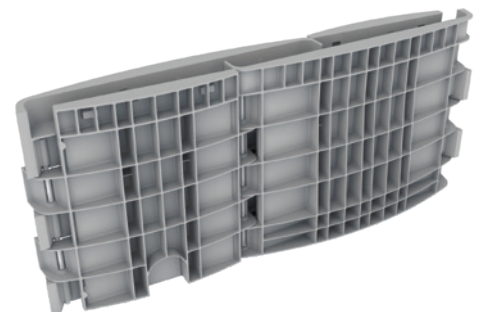
- Hinged corners to allow folding with screw locking mechanism
- Meets ANSI-77 Tier 22 loading requirements
- "Cleated" lid to help ensure lid stays in place
- Mouse hole knockouts to bring in conduit
- Accessory accommodations:
  - Latching option on lid
  - Lid RFID locator attached to lid
  - Provisions for cable support racks
  - Provisions for closure hanging bar
  - Interchangeable customer name plate

## Benefits

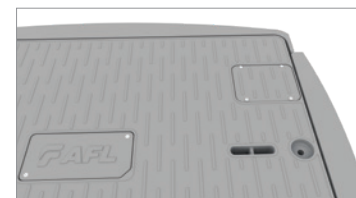
- **Folding Design**  
The compact, foldable construction makes shipping and storage significantly more efficient, saving valuable space and reducing costs.
- **Fast Deployment**  
The vault's user-friendly design ensures a rapid setup, allowing technicians to quickly move from inventory to the field, minimizing downtime.
- **Durable Construction**  
Crafted from high-quality materials, the Switchblade Vault offers reliable protection and secure containment for fiber optic cables, ensuring long-lasting performance in demanding environments.
- **Scalable Capacity**  
Accommodates a wide range of cable quantities and configurations, providing flexibility to meet diverse operational needs.
- **Field-Ready**  
Designed for the challenges of the field, this vault is both rugged and easy to transport, making it a perfect solution for fiber optic deployment teams.
- **Non-conductive and non-corrosive**
- **Made in the USA**



BABA/BEAD compliant configurations and part numbers indicated where applicable. Non-compliant items may be eligible for BEAD De Minimis waiver. For complete list of compliant part numbers, see [AFL BEAD Program Compliant Equipment List](#) on our website.



Folded for Ease of Shipping and Storage



Standard Lid without Latch



Lid with Optional Slam Latch

continued  
→

# Switchblade® FCV-1 Fiber Containment Vault

## Specifications

PARAMETER	DESCRIPTION
Dimensions (External)	26" W x 37" L x 27" D (21" Shortened)
Dimensions (Internal)	17" W x 30" L x 24" D (18" Shortned)
Dimensions (Folded)	Standard: 11" W x 52" D x 27" H Shortened: 11" W x 52" D x 21" H
Weight – lbs	Base: 69 lbs Shortened Base: 56 lbs Tier 22 Lid: 36 lbs

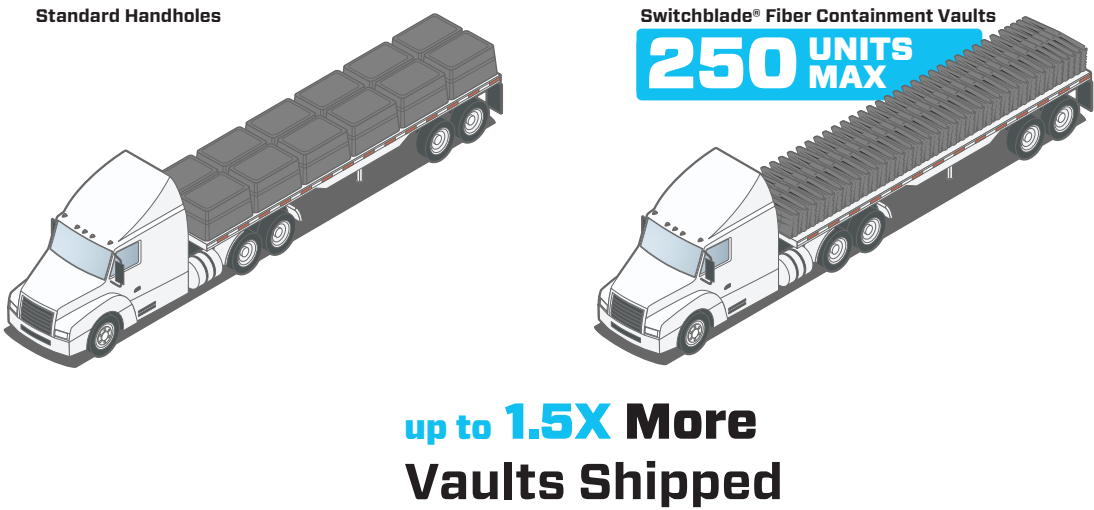
## Qualifications

Governing Body	Standard Code
ANSI	SCTE 77 2017
Test Rating – lbf	Tier 22: 33,750 lbf

The collapsible design of Switchblade fiber containment vaults delivers unmatched transportation and storage space efficiency when compared to traditional vaults.

## Freight Cost Comparison

Standard 53-ft trucks can transport a total of 250 FCV-1 Switchblade fiber containment vaults on a full truck load (FTL). By comparison, an FTL of traditional vaults is maxed at approximately 200 total vaults. Utilizing fewer trucks to deliver more equipment in less deliveries contributes to increased project profitability. Fewer trucks also consume less fuel resulting in positive environmental and sustainability impacts.



BABA/BEAD compliant configurations and part numbers indicated where applicable. Non-compliant items may be eligible for BEAD De Minimis waiver. For complete list of compliant part numbers, see [AFL BEAD Program Compliant Equipment List](#) on our website.

continued  
→

# Switchblade® FCV-1 Fiber Containment Vault

## Ordering Information – Base with Lid

FCV-1	—	22	—	XL	—	24	—	X	—	X	—	X	—	XX
Family Size		Tier		Lid		Internal Depth		Lid Latch		Locator		Cable Racks		Lid Logo
FCV-1 = 17x30 BCV-1 = BABA compliant 17x30		22 = Tier 22		XL = One-piece Lid		24 = 24 inches 18 = 18 inches		X = No Latch S = Slam Latch		X = No Locator L = Locator		X = No Racks R = Racks		XX = Blank CM = Communication * Contact AFL for custom logos

## Ordering Information – Lid Only

FCV-1-LID	—	22	—	X	—	L	—	XX
Lid Family Size		Tier		Latch		Locator		Lid Logo
FCV-1-LID = 17x30 BCV-1-LID = BABA compliant 17x30		22 = Tier 22		X = No Latch S = Slam Latch		X = No Locator L = Locator		XX = Blank CM = Communication * Contact AFL for custom logos

## Ordering Information – Base Only

FCV-2-BASE	—	24	—	X
Base Family Size		Internal Depth		Cable Racks
FCV-1-BASE = 17x30 BCV-1-BASE = BABA compliant 17x30		24 = 24 inches 18 = 18 inches		X = No Racks R = Racks



BABA/BEAD compliant configurations and part numbers indicated where applicable. Non-compliant items may be eligible for BEAD De Minimis waiver. For complete list of compliant part numbers, see [AFL BEAD Program Compliant Equipment List](#) on our website.