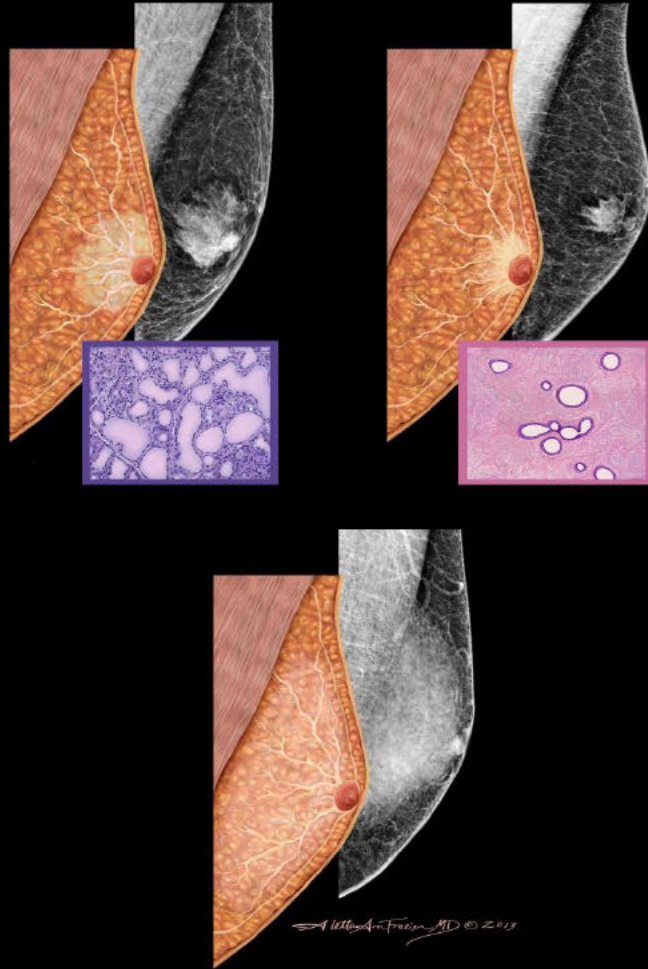


Breast Best Case



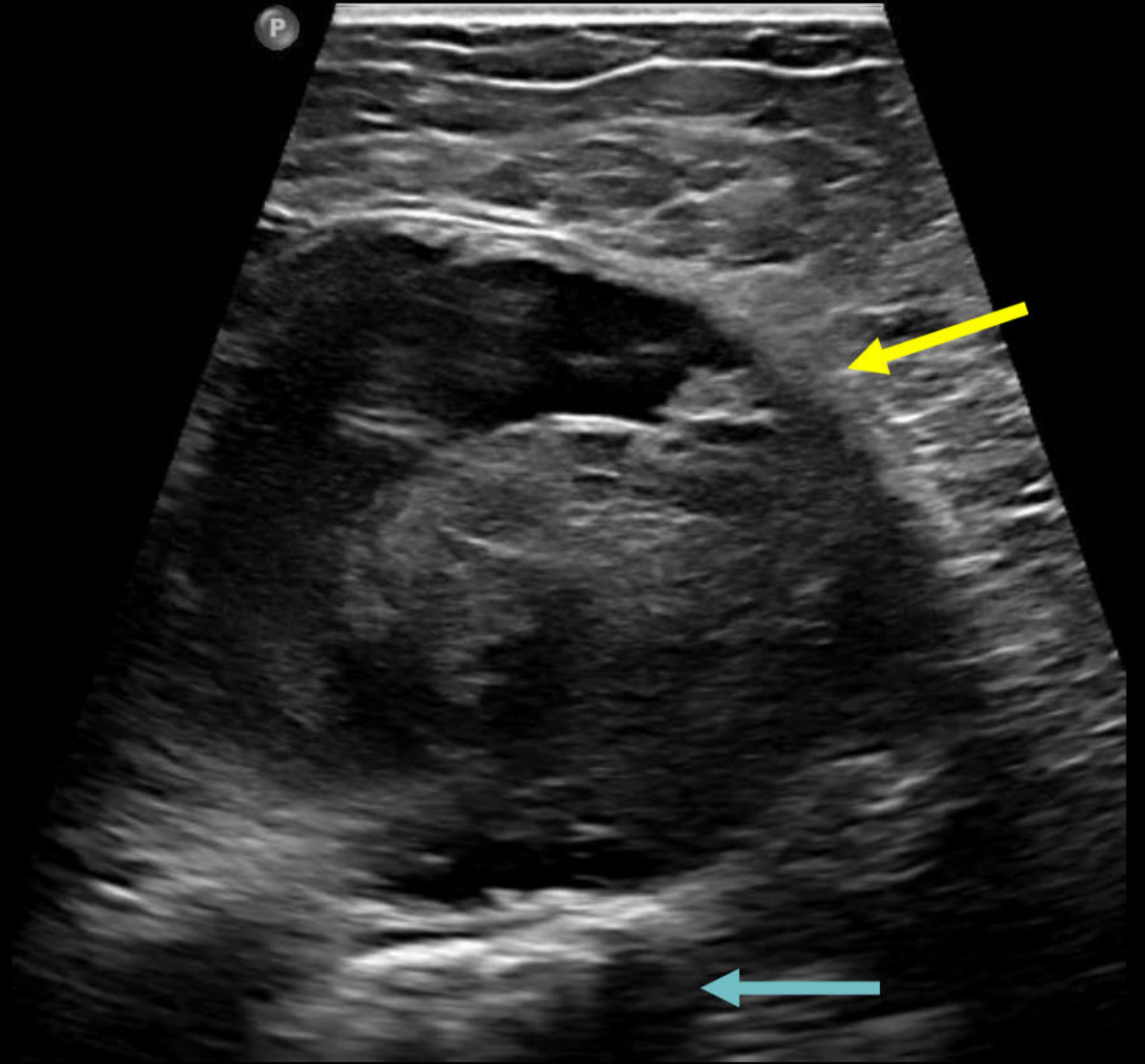
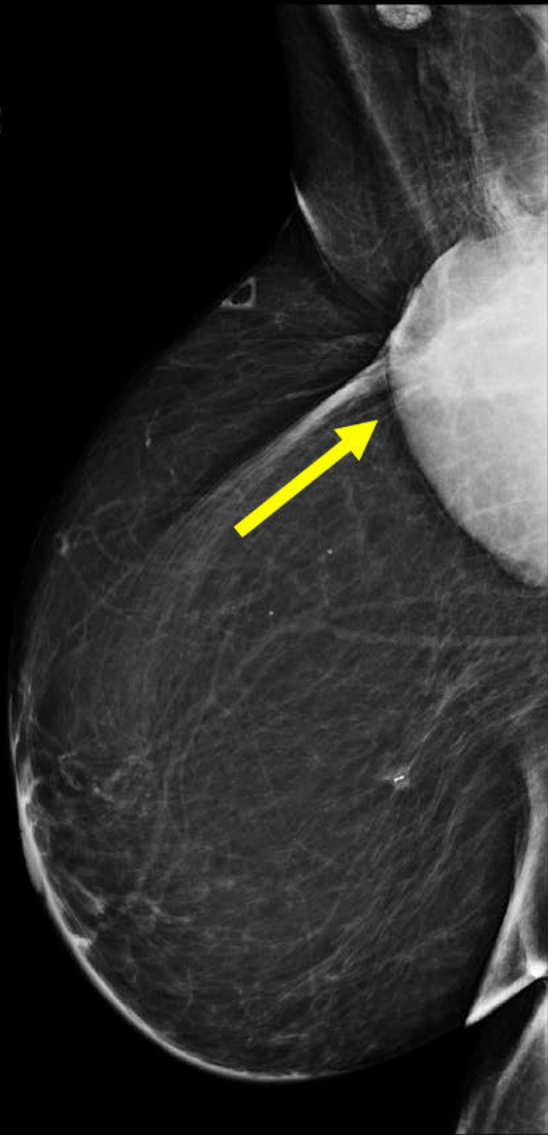
Clinical information

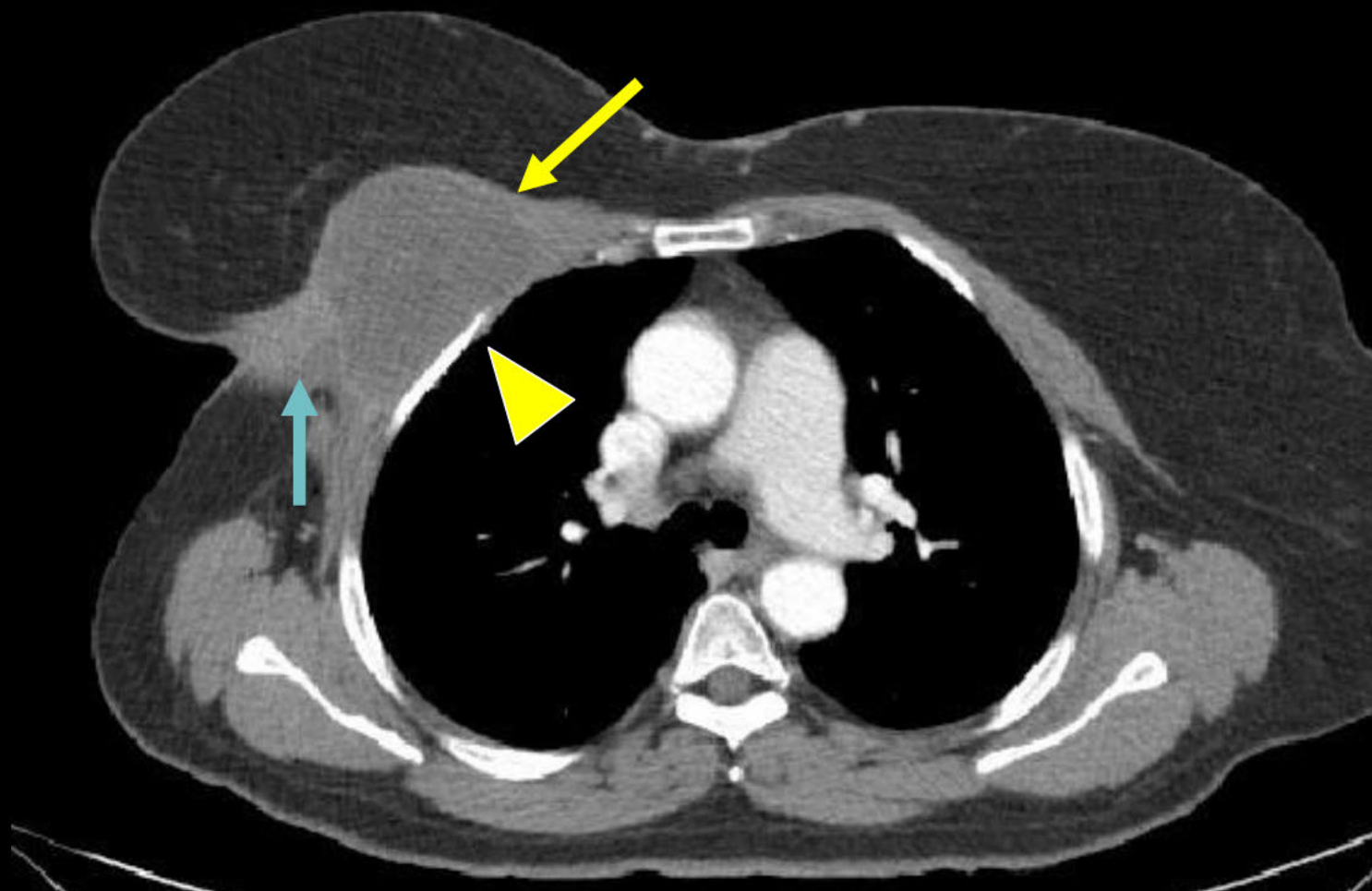
65-year-old female with a right breast mass that had grown rapidly over the past month and had become tender.

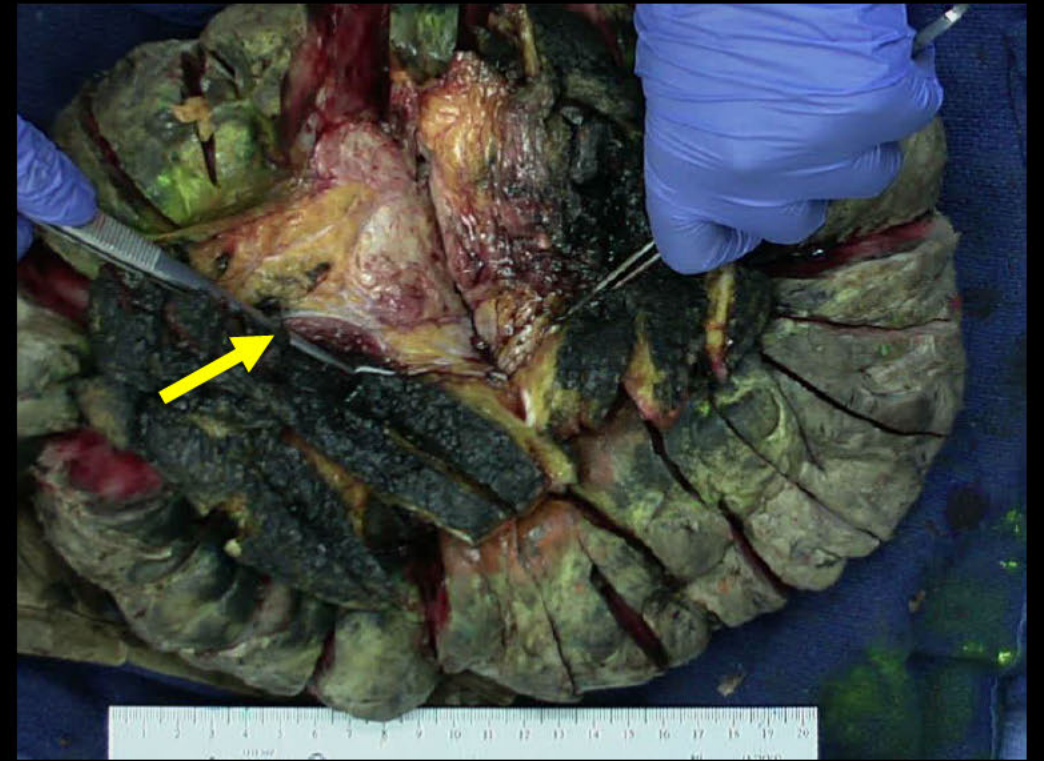
Prior history of stage IIB ER+/HER2+ invasive ductal carcinoma 6 years earlier treated with lumpectomy and radiation. Currently taking anastrozole.



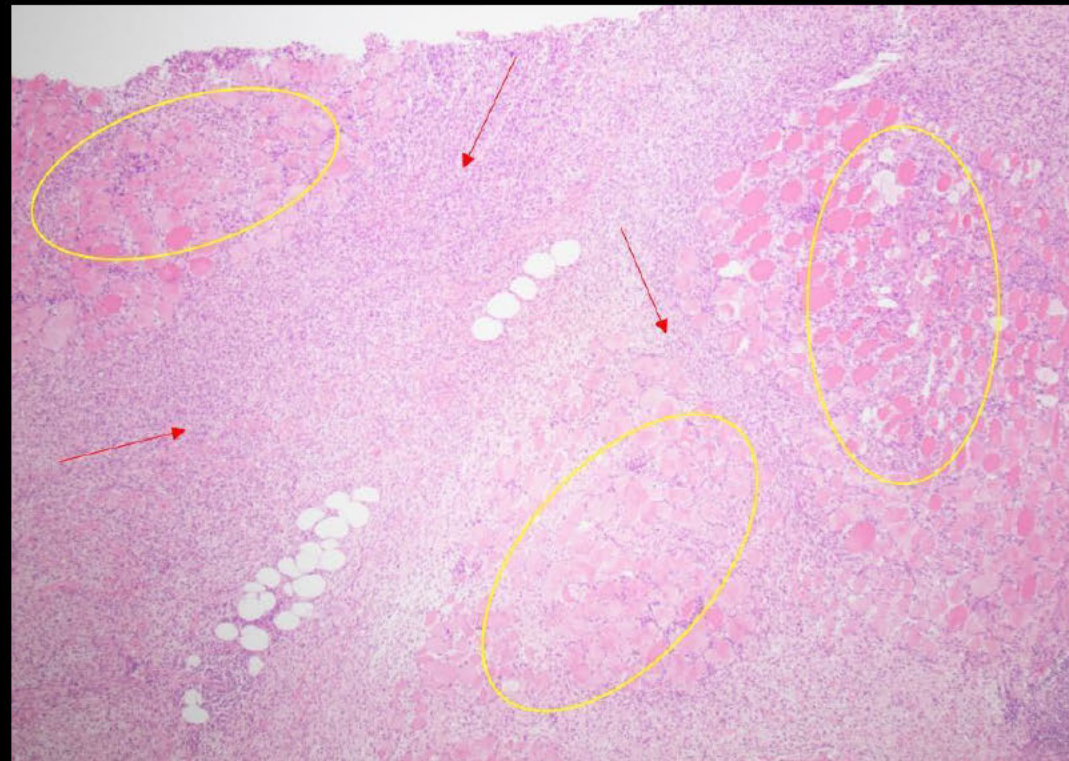
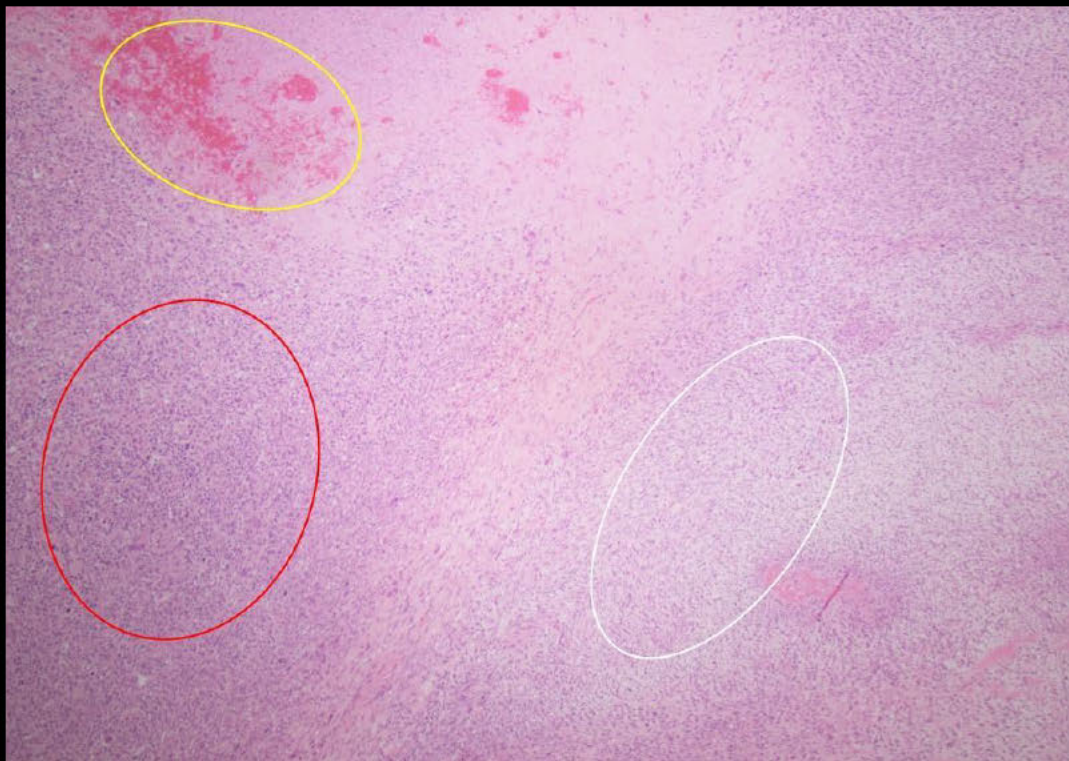
RMLO





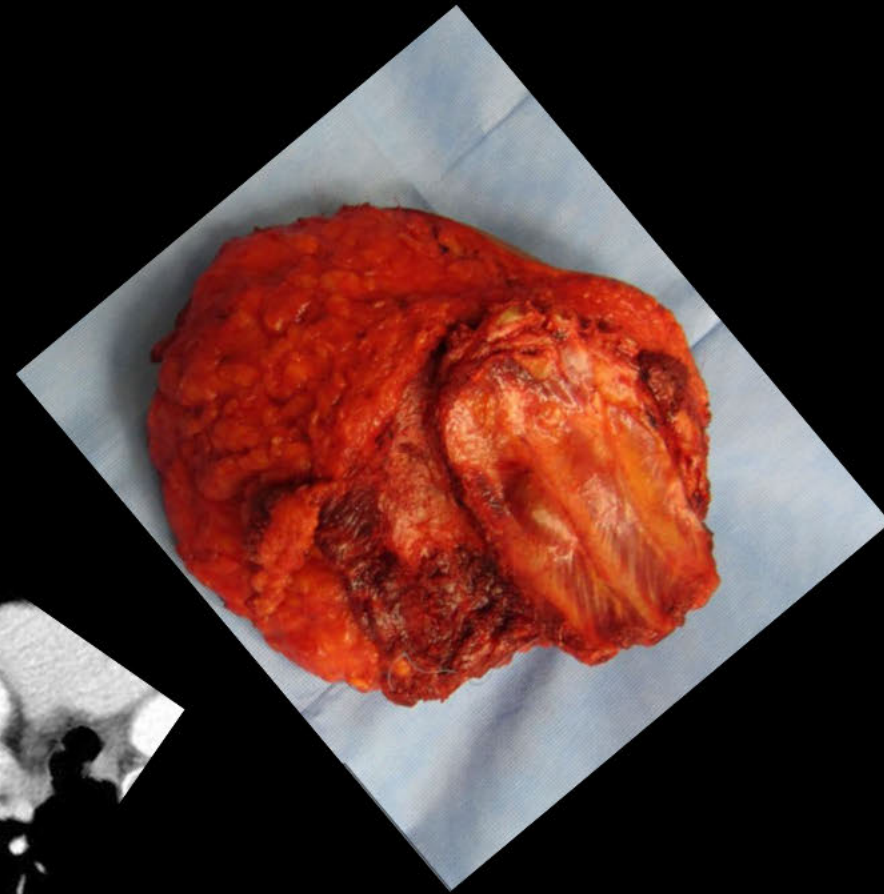
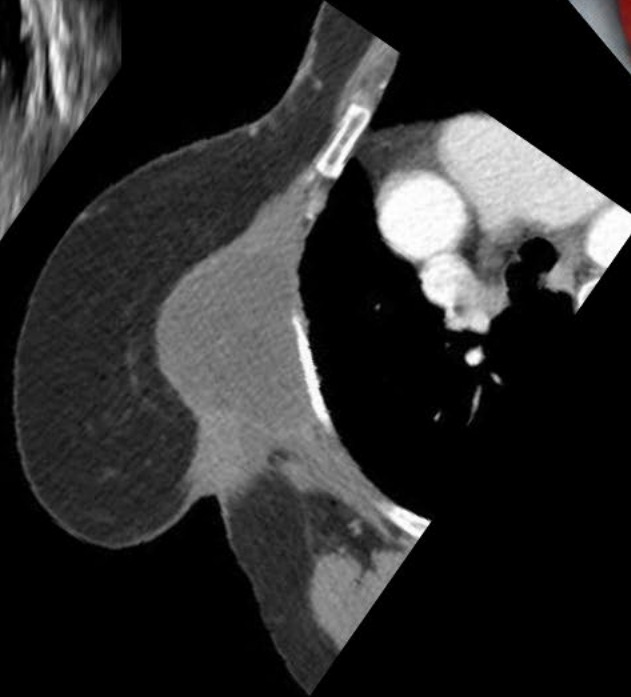
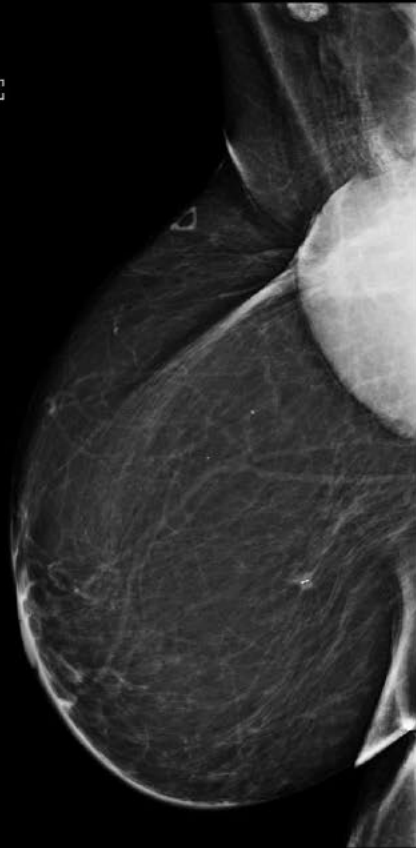


Histology



Rad-Path Correlation

RMLO



Radiation-associated Rhabdomyosarcoma