



LUMINAIRE RETRACTABLE SCREEN DOOR

FRESH AIR AT YOUR FINGERTIPS

with LuminAire® retractable screen door featuring the SlideAway® insect screen.

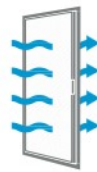


Single LuminAire door in White

LUMINAIRE® RETRACTABLE SCREEN DOOR

Add ventilation to your home without changing the look of your entryway. The LuminAire retractable screen door disappears when not in use and easily engages to allow fresh air in.

- **EASILY HIDDEN**
SlideAway® insect screen system designed to disappear when not in use
- **EASY TO USE**
Quiet controlled operation for smooth, reliable performance
- **EASY TO INSTALL**
Installs in 3 easy steps requiring only basic tools and no cutting
- **EASY LIGHT & VENTILATION**
Brings in natural light and ventilation on demand



Single Door



Double Door



COLOR-MATCHED HANDLE
With a slim profile, our color-matched handle fits the clean LuminAire door design.



REINFORCED CORNERS
Featuring reinforced corners for long-lasting* durability.



LOCKING LATCH
Convenient locking night latch.



SLIDEAWAY SCREEN SYSTEM
Smooth, reliable operation that disappears when not in use.



INTEGRATED DESIGN
Sleek profile design integrates seamlessly with entryway.

* See the limited warranty for details.

LUMINAIRE® RETRACTABLE SCREEN DOOR



SINGLE DOOR CONFIGURATION



30
MINUTE
EASY
Install

Designed to fit single inswing hinged door. Features universal handing.

Not compatible with patio doors.

ADJUSTABLE TO WIDTHS

32"-36"

FITS OPENING WIDTHS
31-7/8" - 36-3/8"

HEIGHT

80"

FITS OPENING HEIGHTS
80" - 80-7/8"

Also available in 78" & 84" heights

AVAILABLE COLORS



White Sandtone Bronze Black



DOUBLE DOOR CONFIGURATION



Designed to fit double inswing hinged door. Features universal active/passive handing.

Not compatible with patio doors.

ADJUSTABLE TO WIDTHS

68"-72"

FITS OPENING WIDTHS
68" - 72"

HEIGHT

80"

FITS OPENING HEIGHTS
80" - 80-7/8"

Also available in 78" & 84" heights

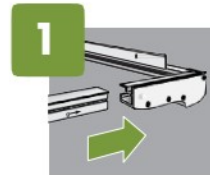
AVAILABLE COLORS



White Sandtone Bronze Black

EASY INSTALLATION

Installs in 3 simple steps with only basic tools and no cutting required.*



1 Assemble the sides and top/bottom screen tracks



2 Place the assembled unit into the opening



3 Secure into the opening

BASIC TOOLS RECOMMENDED



1/8" drill bit and Phillips bit included.
Other supplies needed: Sealant

LIMITED WARRANTY



* Refer to the installation guide for complete instructions.

Available at:



Call or visit for more information & installation details.

1-844-813-6664

andersenluminaire.com

Printing limitations prevent exact finish replication. See your Andersen supplier for exact finish samples. Emco Enterprises LLC is a wholly owned subsidiary of Andersen Corporation that manufactures and supports the limited warranties for Andersen® Storm and Screen Doors. "The Home Depot" and The Home Depot logos are trademarks of Home TLC, Inc. "Andersen" and all other marks where denoted are trademarks of Andersen Corporation and its subsidiary. ©2020 Andersen Corporation. All rights reserved. 02/20