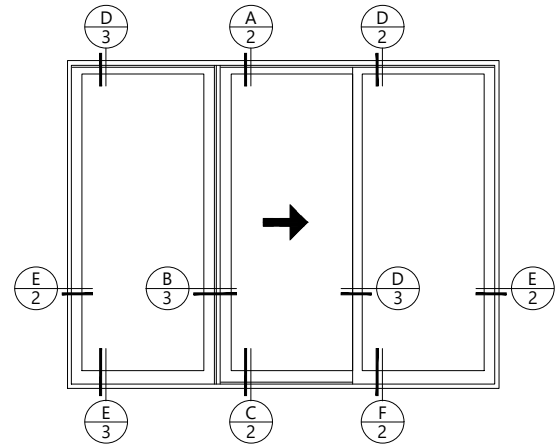
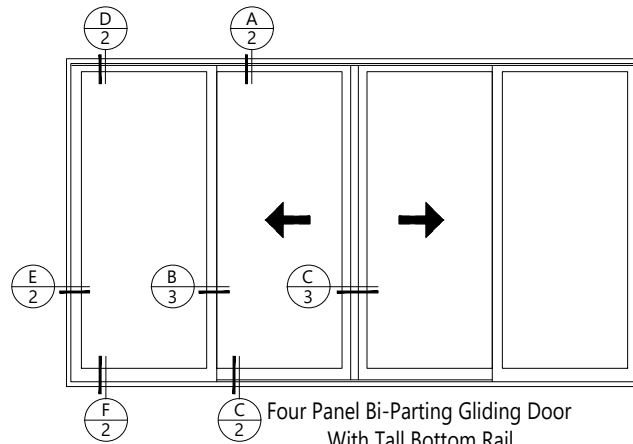


Two Panel Gliding Door  
With Tall Bottom Rail



Three Panel Gliding Door  
With Tall Bottom Rail



Four Panel Bi-Parting Gliding Door  
With Tall Bottom Rail

Scale: 1/4" (6) = 1' (305)

**Notes:**

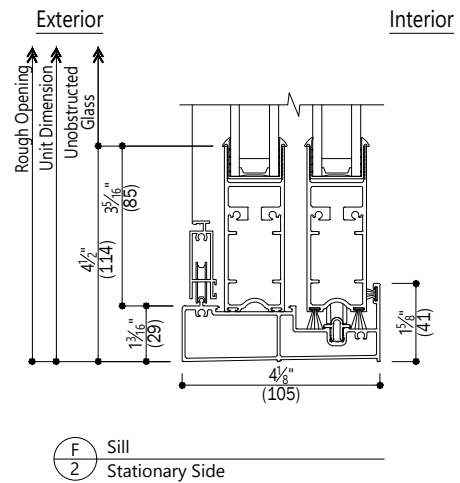
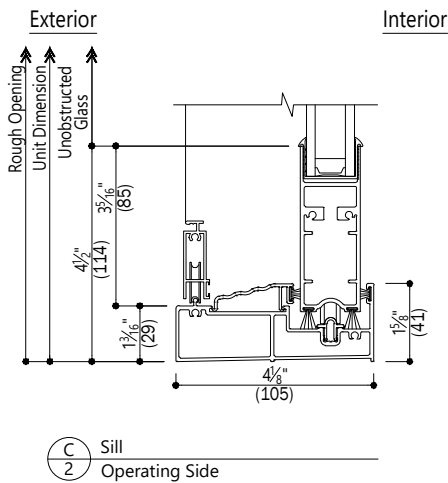
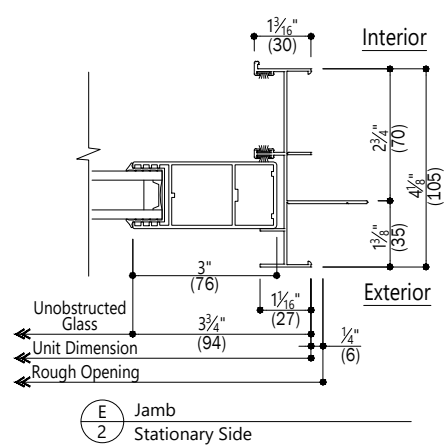
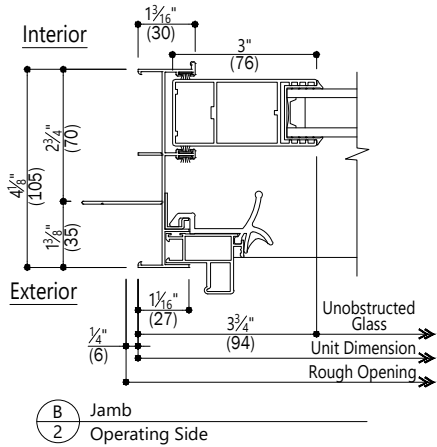
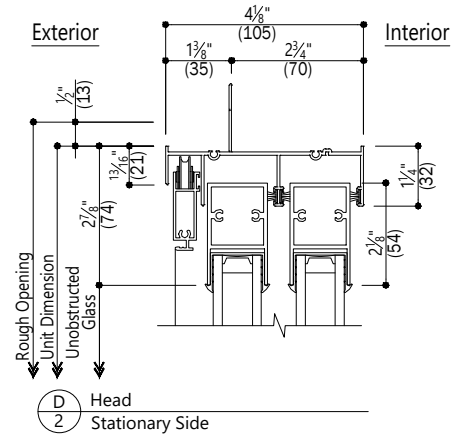
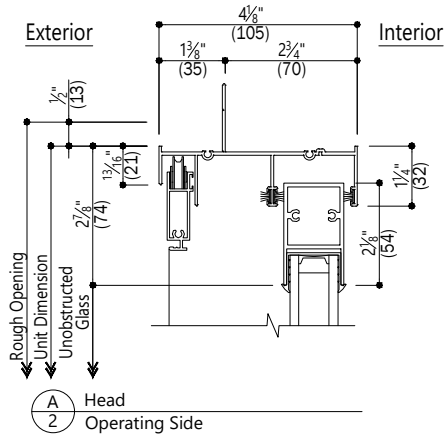
Details have been optimized for use in architectural software and do not match manufacturing specifications.  
Dimensions in parentheses are in millimeters.  
Andersen Windows, Inc. reserves the right to change drawing specifications without notice.

Date: 05/30/23

# Aluminum

## Sliding Glass Door

### Non-thermal



Scale: 3" (76) = 1' (305)

#### Notes:

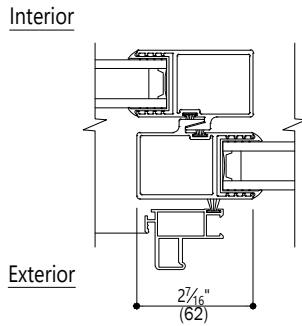
Details have been optimized for use in architectural software and do not match manufacturing specifications. Dimensions in parentheses are in millimeters. Andersen Windows, Inc. reserves the right to change drawing specifications without notice.

Date: 05/30/23

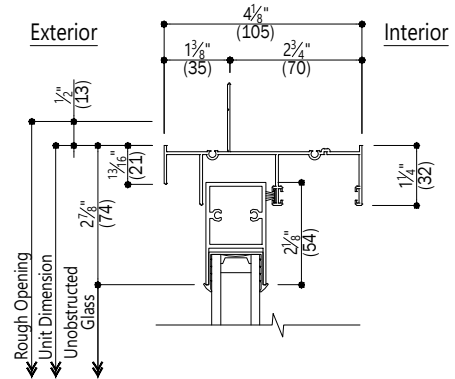
# Aluminum

## Sliding Glass Door

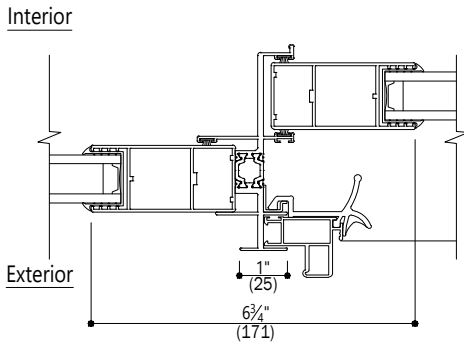
### Non-thermal



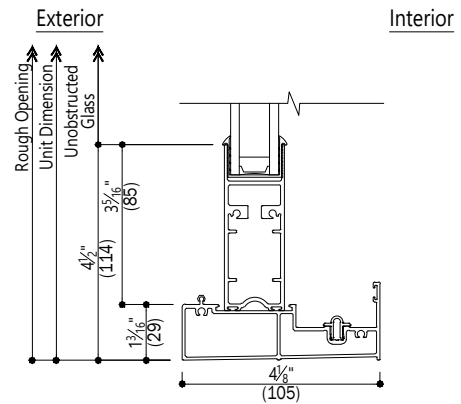
**A**  
3 Interlock



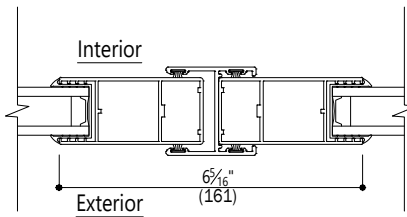
**D**  
3 Head Stationary



**B**  
3 Vertical Integral Join



**E**  
3 Sill Stationary



**C**  
3 Astragal

Scale: 3" (76) = 1' (305)

#### Notes:

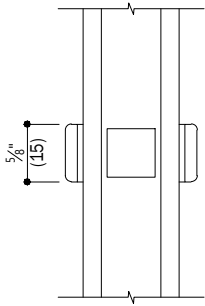
Details have been optimized for use in architectural software and do not match manufacturing specifications. Dimensions in parentheses are in millimeters. Andersen Windows, Inc. reserves the right to change drawing specifications without notice.

Date: 05/30/23

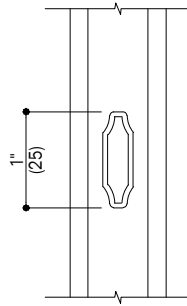
File:	AW	Aluminum	Sections	Sliding Glass Door	Non-thermal	Page 03 of 04
-------	----	----------	----------	--------------------	-------------	---------------

# Aluminum

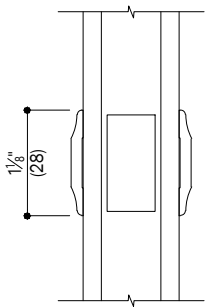
Sliding Glass Door  
Non-thermal



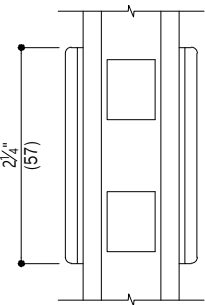
**A**  
4 5/8" Full Divided Light (Flat)



**D**  
4 1" Finelight (Contoured)



**B**  
4 1 1/8" Full Divided Light (Contoured)



**C**  
4 2 1/4" Full Divided Light (Flat Grille)

Scale: 6" (152) = 1' (305)

**Notes:**

Details have been optimized for use in architectural software and do not match manufacturing specifications.  
Dimensions in parentheses are in millimeters.  
Andersen Windows, Inc. reserves the right to change drawing specifications without notice.

Date: 05/30/23