

MOVING GLASS WALLS

ANDERSEN® BIG DOORS



THE WORLD IS YOURS

Your home should be your getaway, your escape and the place you feel most at peace. Our Big Doors are moving glass walls that create resort-like experiences in your home, expanding your views, bringing more life to your parties and immersing you in the outdoors.





*"Enlarge your windows till you
get a window where you can see the
whole universe with one look!"*

– Mehmet Murat ildan

*"Set wide the window.
Let me drink the day."*

– Edith Wharton









SO MANY POSSIBILITIES

Whether you want a 60'-wide sliding glass door, an outdoor serving area, or an indoor/outdoor corner that surrounds you in fresh air, there's an option for almost anything.

POCKETING & STACKING DOORS

Pocketing doors disappear into your walls, making it feel as if there was never a door there in the first place. If pocketing isn't an option, you can also get Big Doors with panels that stack in front of each other.



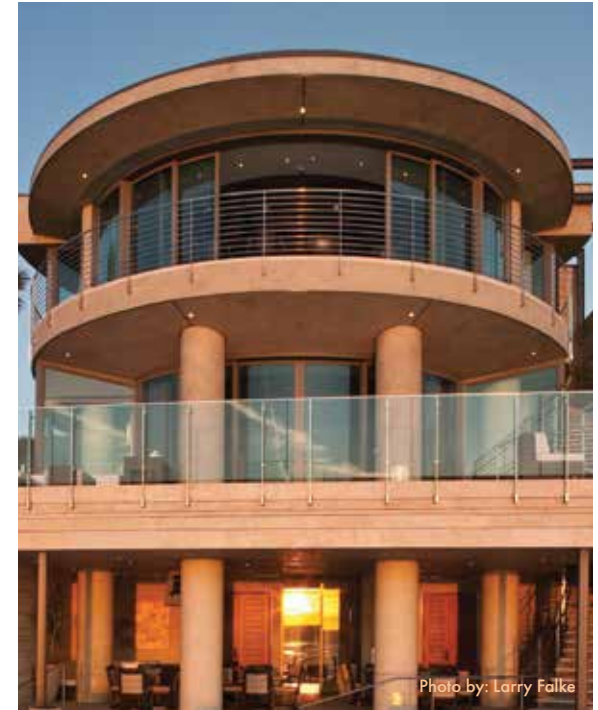


Photo by: Larry Falke



CORNER & CURVED DOORS (above)

If you want to create an unobstructed opening around a curve or on a corner, our Liftslide doors have you covered. They support curved panels with a minimum radius of 10' and large corner designs that keep your space free of corner posts.

PASS-THROUGH WINDOWS (left)

Pass-through windows are a great way to create an outdoor serving area or connect the indoors to a pool, patio or deck if you don't want to remove an entire wall. And they can fold or slide open to better fit your space.

TECHNICAL CONSIDERATIONS

There are a few technical considerations to keep in mind when designing your space with moving glass walls. These include how you want it to open, how it will fit within the framework of your home and what type of glass you'll need for your climate.





HOW IT OPENS

Think about what you want the experience to be like when opening your door. This includes understanding the different types of sill systems. Automated opening capabilities are also available.



HOW IT FITS

Pocketing doors, like our Liftslide and MultiGlide™ doors, give you a more seamless indoor/outdoor experience, and our Folding Outswing doors are great when there isn't room for multiple tracks or pocketing. With either option, you'll also need header and structural support over the span of the opening to accommodate the added weight of top-hung systems.



HOW IT PERFORMS

Your climate plays a big role in determining which options are best for your home. You will need to meet local codes, which can be especially tricky if you're building on the coast. You'll also want the right kind of glass since there will be so much of it — think UV and glare protection, U-Factor and energy-efficiency.

MULTIGLIDE™ DOORS

The classic sliding glass walls. They're a great way to create an immersive indoor/outdoor space on a budget, and can easily adapt to traditional home designs thanks to their wood interiors.

- Contemporary panels available in all aluminum or aluminum-clad wood designs with 2 3/4" profiles
- Traditional panels available in aluminum-clad wood designs with 4 1/16" stiles and 4 1/16", 8" or 12" bottom rail heights
- Thermally controlled frame option with aluminum-clad wood panels offers increased thermal performance
- Sleek, low-profile contemporary handle design allows panels to be pocketed into the wall or stacked flush
- Built-in jacking screws enable fine adjustments to the frame during and after installation
- Pass-through window design available





Operation

The MultiGlide™ door's continuously adjustable rollers are made with stainless steel ball-bearings and perfectly match the track to minimize vibrations for smooth operation. An optional automated open/close system that's UL 325 certified is also available.

Screens

Insect screen options include aluminum framed bottom gliding screen panels or a retractable screen system. The retractable insect screen system is hidden from view when not in use and glides across the complete door opening, stopping at any desired location - only available on doors up to 30' wide.



Flush Sill
(Material between rails shown to represent flooring.)

On-Floor Drainage Sill

Sill Types

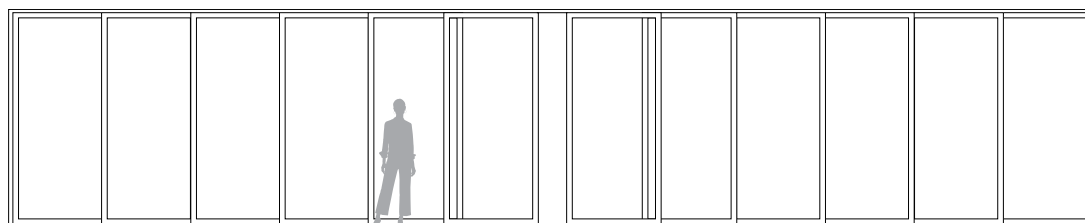
The on-floor drainage sill for the MultiGlide door is designed with built-in drainage channels to manage water and is available with interior and exterior ramps. An optional raised threshold enhances performance to a PG30 rating for sizes up to 8' tall.

The flush sill is also designed to rise only $\frac{3}{16}$ " above the finished floor for a more seamless indoor/outdoor transition.

*S1L-1RS 191" x 95.5" door tested Class LC-PG30.

Fits openings between
4'-11 $\frac{1}{8}$ " and 50' wide and
between 4' and 10' tall

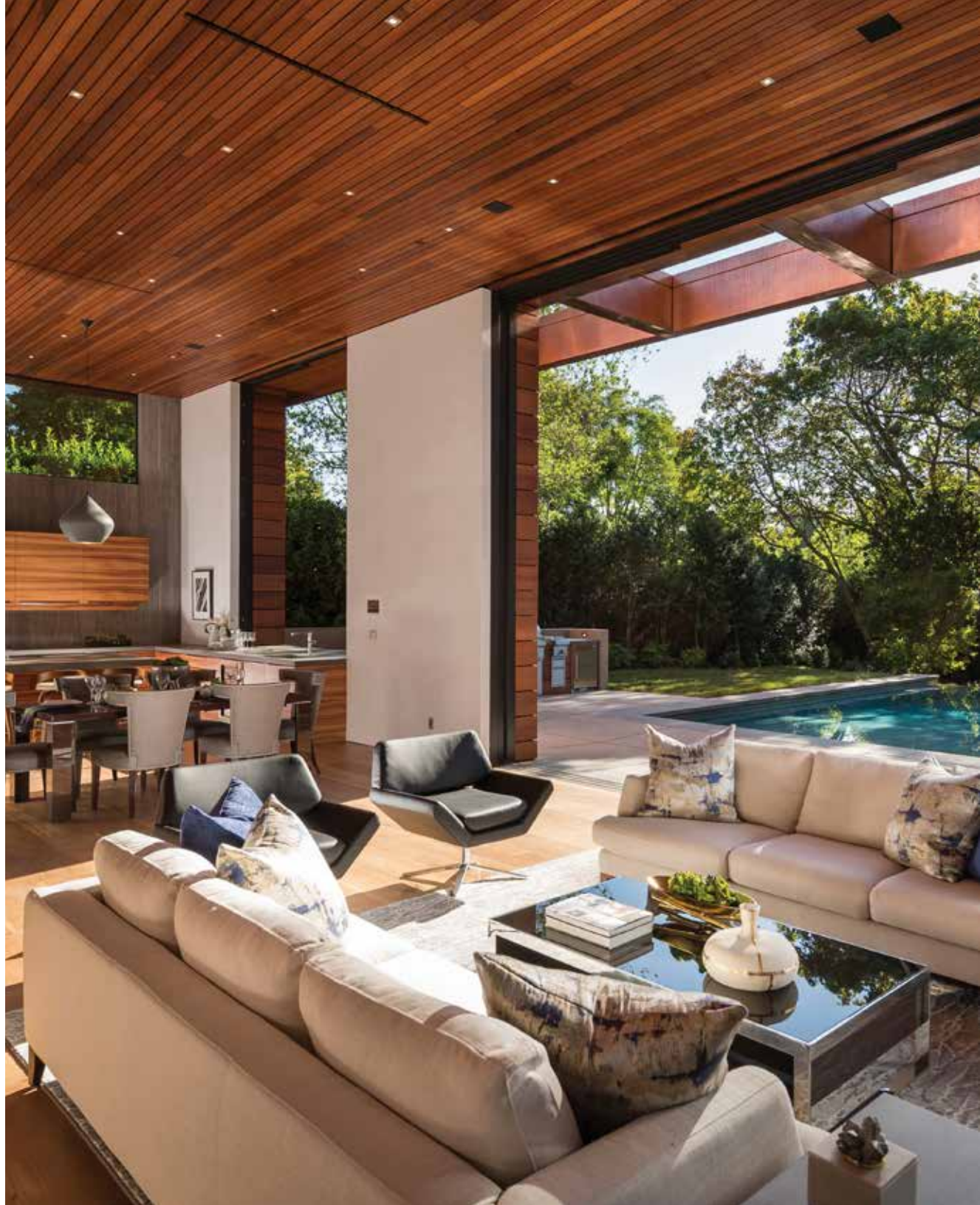
12-Panel configuration
50' wide x 10' tall
Two-directional panel operation



LIFTSLIDE DOORS

The ultimate moving glass walls. These doors create the biggest, most luxurious indoor/outdoor environments. And unlike traditional sliding doors, they lift off the ground for a weightless feel so smooth you'll think they're floating.

- Can be over 60' wide with fewer, bigger panels
- All wood, all aluminum or aluminum wood-clad construction
- Thermally controlled frame and panels available
- Flush bottom track sits only $\frac{3}{16}$ " above finished floor
- Multi-point locking system
- Straight, corner, curved and pass-through-window designs available
- Integrated insect screen system available
- Impact rated and meets Florida Building Code Product Approvals (FL17559)





Operation

Our Liftslide doors are unlike conventional sliding doors. They lift up when opening, freeing up contact with the gaskets so there's no friction caused by the weatherstrips. When closed, they return to their secure and weathertight position.



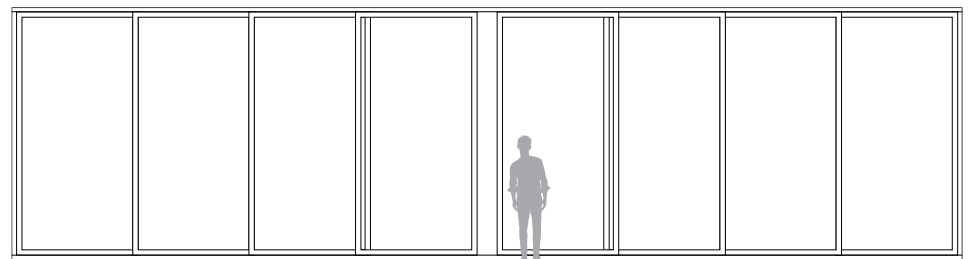
Sill Types

Liftslide doors have a patented flush sill system with transverse drains and full drainage along the tracks. The sills are made of anodized aluminum and sit only $\frac{3}{16}$ " above the finished floor. Tracks are pre-assembled for easier and more precise installation.



Fits openings between
60' wide and 16' tall

8-Panel configuration
60' wide and 16' tall
Two-directional panel
operation



FOLDING OUTSWING DOORS

A perfect option when there isn't space for wall pockets or more than a single track. Instead of pocketing into the wall, they fold up tightly so you can create a wide open indoor/outdoor experience almost anywhere.

- Contemporary panel styles up to 48" wide
- Traditional panel styles up to 39" wide
- Aluminum-clad wood construction
- Can open from the left, right or center
- Rated for air, water and structural performance
- Top-hung system allows for easy operation
- FSB® hardware available for a sleek, modern look
- Pass-through window design available
- Impact rated and meets Florida Building Code Product Approvals (FL14326)

"FSB" is a registered trademark of Franz Schneider Brakel GmbH & Co.





Panels

Despite typically having panels that are smaller and more abundant than sliding doors, Folding Outswing doors can still create immersive indoor/outdoor atmospheres. They also require less space since the panels don't need pocketing.

Screens

Retractable insect screen system is hidden from view when not in use and glides across the complete door opening, stopping at any desired location. Retractable screen system only available on doors up to 30' wide.



On-Floor Drainage Sill

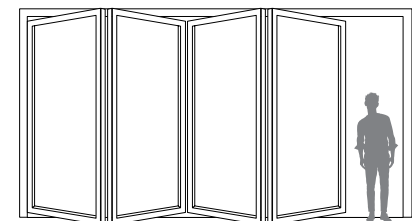
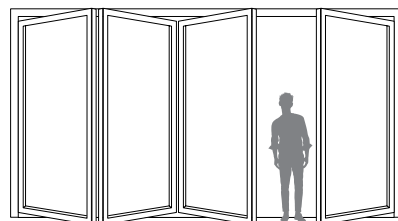
Sill Types

The on-floor drainage sill for the Folding Outswing door offers a PG40* rating for sizes up to 24' wide and 8' tall and a PG30 rating for sizes up to 24' wide and 10' tall. On-floor low-threshold sill and flush sill options provide easy accessibility.

*Performance rating: Class SP-PG30 size tested 159" x 119.5" for a door with standard sill. Class SP-PG40 size tested 159" x 95.5" for a door with standard sill. Doors with other sill options are not rated.

Fits openings between 3'-3" and 48" wide and between 3'-5 3/8" and 10' tall

4-Panel configuration
Shown at right: 3L1R
Shown at middle: 2L2R
Shown at far right: 4L



BEEFY BIFOLD DOORS

Similar to our Folding Outswing doors but bigger and without a full outswing. These have a heavy-duty hardware system that supports larger door panels, giving you the option to create a more expansive open space when pocketing doors aren't an option.

- Panel sizes available up to 5' wide and 13 ½' tall, meaning less obstructions and more view
- All aluminum and aluminum wood-clad panels have rails and stiles that are 3 ½" wide with a thickness of 3 ¾"
- All wood panels up to 10' tall have stiles that are 3 ⅝" wide with a bottom rail height of 7 ¼" and a thickness of 2 ⅝"
- Door jamb is less than 4" in depth and can fit into almost all existing wall conditions
- Top-hung system allows for easy operation
- Center-pivoting design with internal shoot-bolt locking hardware





Hardware

The Beefy Bifold door's heavy-duty hardware system supports larger door panels while still being easy to operate. Because the Beefy Bifold door uses a center pivot system, the panels fold in and out.

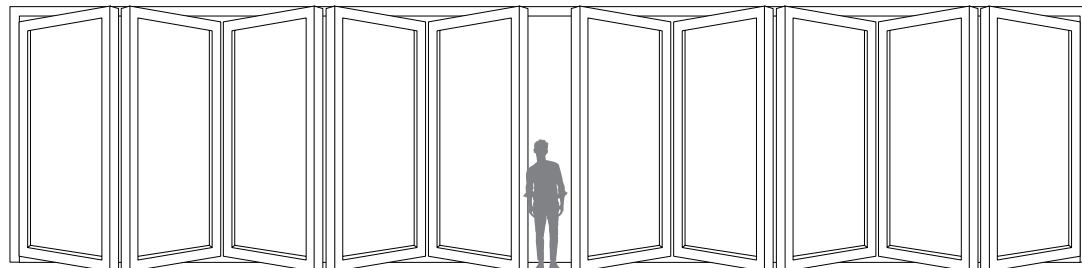


Sill Types

The bottom track on the Beefy Bifold door is a U-channel track available with drainage to keep the weather out. It sits only $\frac{3}{8}$ " above the finished floor and creates a smooth, low profile transition from indoors to outdoors.

Built to fit openings
up to 40' wide

10-Panel configuration
Two-directional (bi-parting)
panel operation, 5L5R



PIVOT DOORS

This is how you create a bold entrance.

These large, glass doors are designed to pivot in place, allowing you to match the open, sophisticated and airy feel of your modern home.

- Panel width available up to 9' wide and 13' tall
- All wood, all aluminum or aluminum wood-clad construction
- Inswing, outswing, both inswing and outswing, single or double doors, and gang pivot doors
- Single-pivot and double-pivot door options available
- Flush sill creates a seamless transition
- FSB® hardware available for a sleek, modern look

*FSB® is a registered trademark of Franz Schneider Brakel GmbH & Co.





Operation

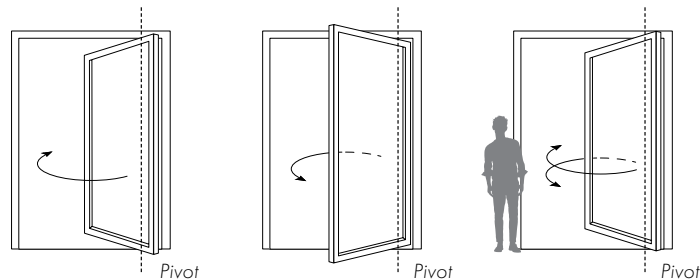
Pivot doors use a mounting system on the sill and head of the door instead of a hinge along the jamb. They rotate on a pivot box, opening in, out or both in and out. The panel size dictates the location of the pivot point — the larger the panel, the more the pivot point will move towards the center with a minimum distance of 4" from the jamb.

Performance

- LC PG30 certified for single point lock*
- Water tested per ASTM 331 to 12.11 psf
- Passes air leakage per ASTM #283 at 0.16 cfm/sq. ft.
- NFRC rated for aluminum wood-clad panels
- Impact rated, meets Florida Building Code product approvals (FL22224) and Hallmark certified up to 50 sq. ft.
- CW PG60 certified when multi-point locking activated with single lever handle

*Up to panel size 5' x 10' and with patented low threshold sill.

Rotating on a pivot box,
these doors can
swing in, out or both.



COMPARISON CHART

Compare features and options across the Andersen® Big Doors portfolio. To see all door options and performance information, visit andersenwindows.com/doors.

	MATERIALS	MAXIMUM DOOR SIZE	MAXIMUM PANEL WIDTH	STILE WIDTH
MULTIGLIDE™ DOORS (shown on page 12)	Aluminum Exterior & Interior Aluminum-Clad Wood (Aluminum Exterior/ Wood Interior)	50' x 10'	60"	Contemporary: 2 1/2" Traditional: 4 11/16"
LIFTSIDE DOORS (shown on page 14)	Aluminum Exterior & Interior Wood Exterior & Interior Aluminum Wood-Clad (Aluminum Exterior/ Wood Interior)	60' x 16'	168"	Aluminum Wood-Clad: 3 1/2" All Wood: 3 5/8"
FOLDING OUTSWING DOORS (shown on page 16)	Aluminum-Clad Wood¹ (Aluminum Exterior/ Wood Interior)	48' x 10'	Contemporary: 48" Traditional: 39"	Contemporary: 3 11/16" Traditional: 4 11/16"
BEEFY BIFOLD DOORS (shown on page 18)	Aluminum Exterior & Interior Wood Exterior & Interior Aluminum Wood-Clad (Aluminum Exterior/ Wood Interior)	40' x 13.5'	60"	Aluminum Wood-Clad: 3 1/2" All Wood: 3 5/8"
PIVOT DOORS (shown on page 20)	Aluminum Exterior & Interior Wood Exterior & Interior Aluminum Wood-Clad (Aluminum Exterior/ Wood Interior)	84 sq. ft. glass	108"	Aluminum Wood-Clad: 3 1/2" All Wood: 3 5/8"

CONFIGURATIONS	ALUMINUM-CLAD WOOD DOOR EXTERIOR COLORS	ALUMINUM DOOR EXTERIOR & INTERIOR COLORS	ANODIZED FINISH OPTIONS	INTERIOR WOOD SPECIES	INTERIOR WOOD FINISHES	INTERIOR PAINTED COLOR OPTIONS	GRILLE TYPES	NOTES
Stacking Pocketing Pass-Through	50 Standard Colors & Custom	6 Standard Colors & 2 Anodized Finishes	7 Anodized Finishes	11 Standard Wood Species ¹	9 Standard Wood Finishes	14 Colors ²	Full Divided Light Simulated Divided Light Finelight™ Grilles- Between-the-Glass	<p>1 Wood interiors are unfinished unless specified. Naturally occurring variations in grain, color and texture of wood make each door one of a kind.</p> <p>2 Interior painted options available on pine. Black and dark bronze are also available on maple. Anodized silver is only available on maple.</p>
Stacking Pocketing Corners Curves Pass-Through Barn Door	50 Standard Colors & Custom ¹	50 Standard Colors & Custom ¹	3 Anodized Finishes	11 Standard Wood Species ²	Not Available	Not Available	Full Divided Light ³ Intermediate Stiles & Rails ³	<p>1 Kynar 500 standard exterior finish meeting AAMA 2605-05 requirements.</p> <p>2 Wood interiors are unfinished. Naturally occurring variations in grain, color and texture of wood make each door one of a kind.</p> <p>3 Grille type available depends upon material used for door.</p>
Folding Outswing Pass-Through	50 Standard Colors & Custom	Not Available	7 Anodized Finishes	11 Standard Wood Species & Custom ²	Not Available	14 Colors ³	Full Divided Light Simulated Divided Light Finelight Grilles- Between-the-Glass Removable Interior Grille	<p>1 A wood exterior panel and frame construction is also available as a special product request.</p> <p>2 Wood interiors are unfinished unless specified. Naturally occurring variations in grain, color and texture of wood make each door one of a kind.</p> <p>3 Interior painted options available on pine. Black and dark bronze are also available on maple. Anodized silver is only available on maple.</p>
Folding Outswing or Inswing	50 Standard Colors & Custom	50 Standard Colors & Custom ¹	2 Anodized Finishes	11 Standard Wood Species & Custom ²	Not Available	Not Available	Full Divided Light ³ Intermediate Stiles & Rails ³	<p>1 Kynar 500 standard exterior finish meeting AAMA 2605-05 requirements.</p> <p>2 Wood interiors are unfinished. Naturally occurring variations in grain, color and texture of wood make each door one of a kind.</p> <p>3 Grille type available depends upon material used for door.</p>
Inswing and/ or Outswing Single or double doors Pivot Wall	50 Standard Colors & Custom	50 Standard Colors & Custom ¹	3 Anodized Finishes	11 Standard Wood Species & Custom ²	Not Available	Not Available	Full Divided Light ³ Intermediate Stiles & Rails ³	<p>1 Kynar 500 standard exterior finish meeting AAMA 2605-05 requirements.</p> <p>2 Wood interiors are unfinished. Naturally occurring variations in grain, color and texture of wood make each door one of a kind.</p> <p>3 Grille type available depends upon material used for door.</p>



Learn more at andersenwindows.com/bigdoors

"Andersen" and all other marks where denoted are trademarks of Andersen Corporation.
©2022 Andersen Corporation. All rights reserved. 04/22 Part #110012