



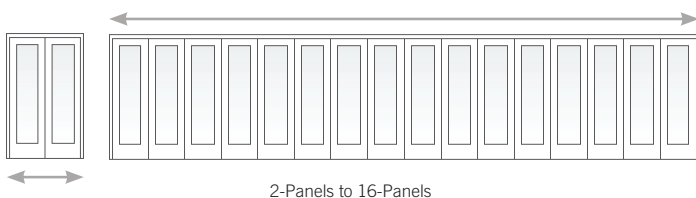
When you want to blur the line between indoors and out, choose Andersen® folding outswing doors. When closed, they are a stately wall of light; when open, they fold virtually out of sight. To fit any home's style, rectangular panels are available with virtually any design and allows doors up to 48' wide to open the doors from the left, right or center.

DESIGN FEATURES

To allow for proper performance and operation, verify the structural integrity of the header such that the maximum deflection with live and dead loads is limited to the lesser of L/750 of the span and ¼". The maximum weight per panel with Low-E4, SmartSun™ or Sun glass is 250 lbs per panel. Weights using alternate glazings will need to be provided by Andersen.

PANEL AND SIZE RANGES

Custom heights can be ordered in 1/8" increments from 6'-8" to 10'. Custom widths range from 3'-2 ¼" for 2-panel doors to 48' for 16-panel doors.



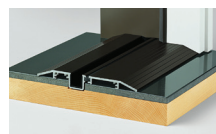
KEY FEATURES

- Built to fit openings up to 48' wide by 10' tall
- Top hung system allows for easy operation
- High-performance Low-E4® glass means energy performance
- Wide variety of exterior aluminum clad colors* and ten wood species
- Multi-point locking system
- Traditional or contemporary panel styles
- Optional retractable insect screen**
- Choice of many hardware styles and finishes
- PG40 (DP +40/-40 psf) for sizes up to 24' wide and 8' tall with the standard sill option†
- PG30 (DP +30/-30 psf) for sizes up to 24' wide and 10' tall with the standard sill option†

SILL OPTIONS



On-Floor Drainage Sill
(PG40/30 rated)†



On-Floor Low-Threshold Sill



Flush Sill

*AAMA 2605 finish standard on the frame and panel components. **Folding door insect screens are available for purchase through an authorized Andersen dealer. †Performance Rating: Class SP-PG30 Size Tested 159" x 119.5", for a door with standard sill. Class SP-PG40 Size Tested 159" x 95.5", for a door with standard sill.

FOLDING DOOR

EXTERIOR CLAD OPTIONS

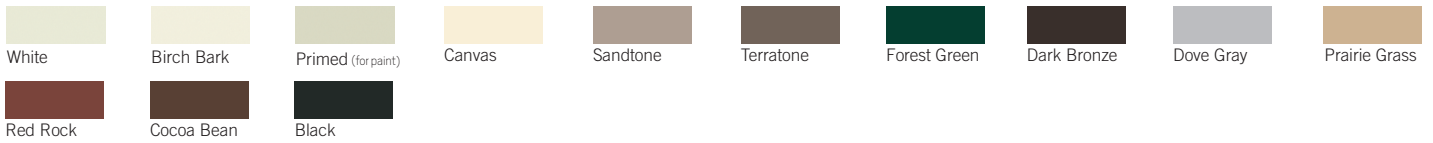


INTERIOR OPTIONS

Wood Species

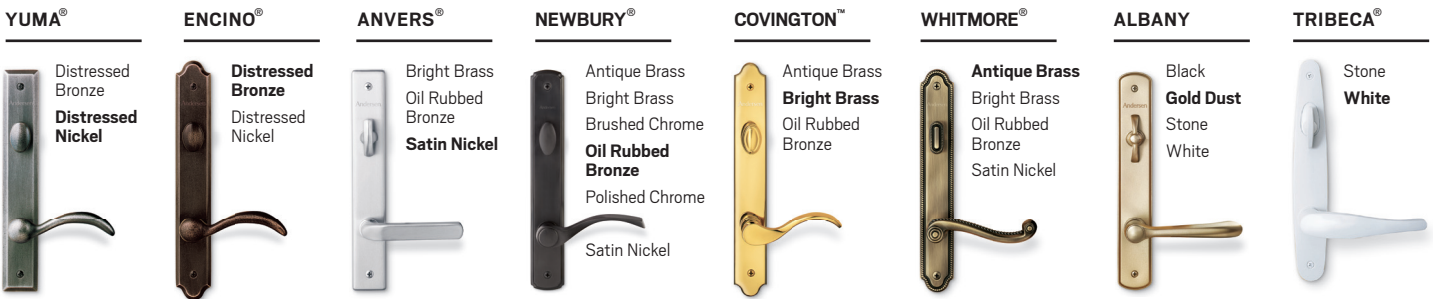


Painted Options Available on pine.



HARDWARE STYLES**

Bold name denotes finish shown.



*Actual wood is sapele, a non-endangered species of mahogany, grown in Africa, with color and characteristics of American mahoganies. **Hardware sold separately.

Distressed bronze and oil rubbed bronze are "living" finishes that will change with time and use. Bright brass and satin nickel finishes feature a 10-year limited warranty. Printing limitations prevent exact duplication of exterior colors and wood species, please see actual samples. Naturally occurring variations in grain, color and texture of wood make each door one-of-a-kind. We cannot guarantee consistency in wood grain and/or color within a particular species, product or project. All wood interiors are unfinished unless a painted option is specified.

"Andersen" and all other marks where denoted are trademarks of Andersen Corporation.
©2018 Andersen Corporation. All rights reserved. 03/18



For more information or to find a dealer, visit andersenwindows.com/ac or call 877.577.7655.