

# Flush Mount Hardware Application

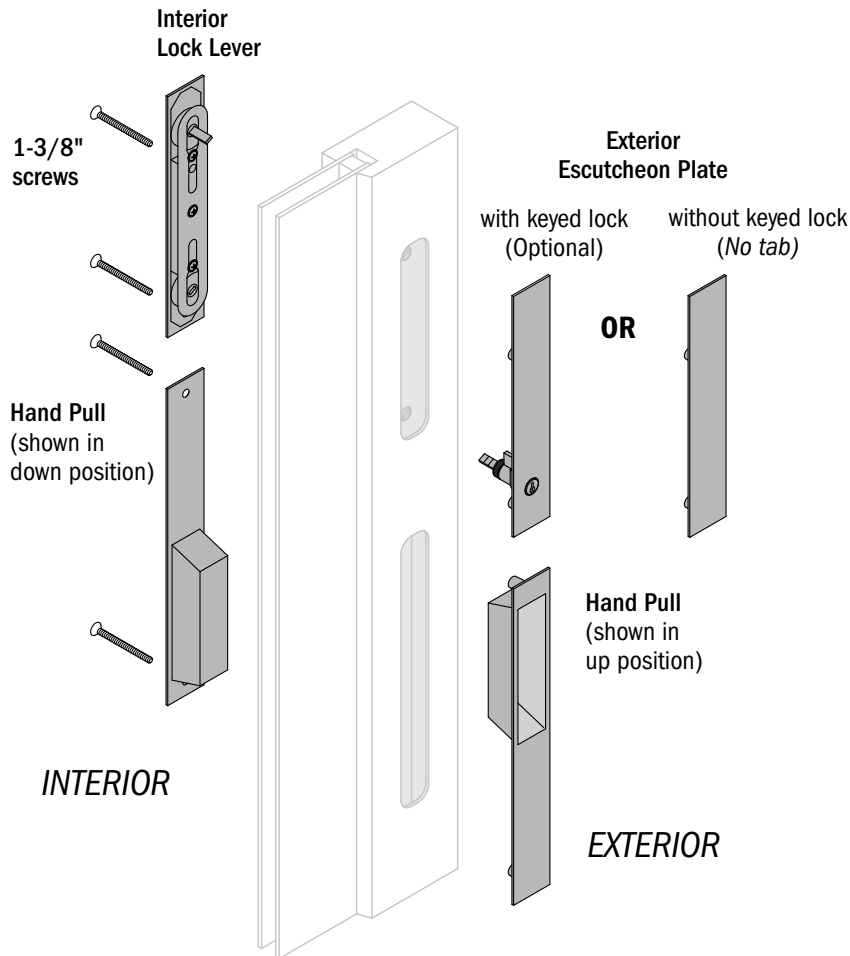
## Product Series/Product Type:

Big Doors MultiGlide™ Door and  
A-Series Gliding Patio Door

Read these instructions before starting procedure.  
For additional information visit [www.andersenwindows.com](http://www.andersenwindows.com).  
For questions call 1-888-888-7020.

Para obtener una versión en español de esta guía,  
visite el sitio [www.andersenwindows.com](http://www.andersenwindows.com)

## Parts Included:



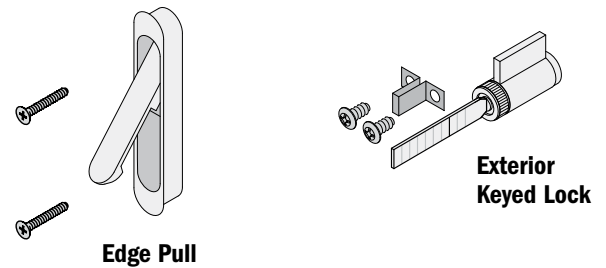
Hand pull can be applied with pull pocket up or down.  
(Opposite side will have opposite orientation.)

## Tools and Supplies Needed:



## Additional Parts (Optional):

### Edge Pull (MultiGlide™ Door Only)

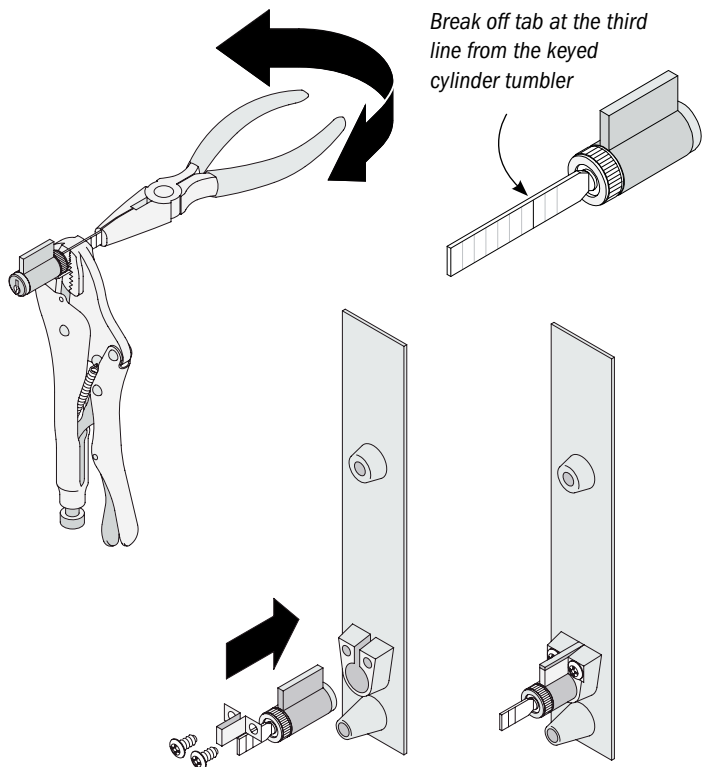


## WARNING

- Incorrect installation may affect egress and home security. Follow instruction guide to make sure hardware is installed correctly.
- Follow manufacturers' instructions for hand and power tools. Always wear safety glasses. Failure to do so could result in injury, product or property damage.
- Use caution when working at elevated heights and around window and door openings. Follow the manufacturers' instructions for ladders and scaffolding. Failure to do so could result in injury or death.
- Windows and doors have small parts (e.g. hole plugs, operator spline caps, fasteners, etc.). Small parts if swallowed could pose a choking hazard to young children. Dispose of unused, loose, or easily removed small parts. Failure to do so could result in injury.

1

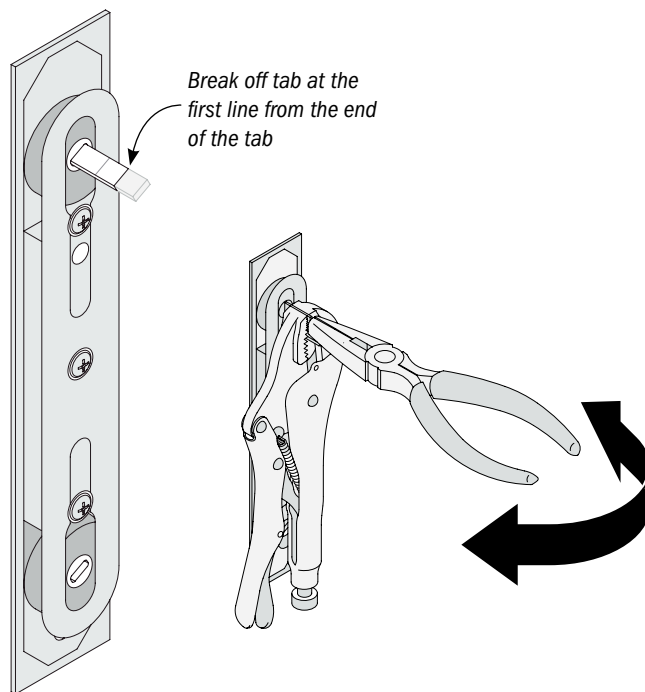
### Optional Exterior Keyed Lock



Assemble keyed lock and exterior escutcheon plate as shown.

2

### Interior Lock Lever

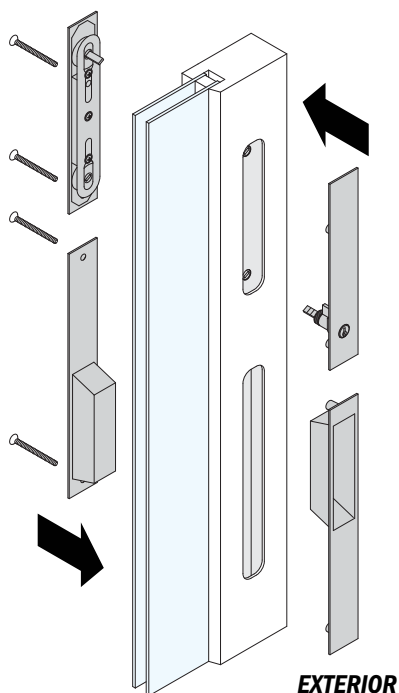


Break off the end of the interior lock lever tab at the first line from the end of the tab as shown.

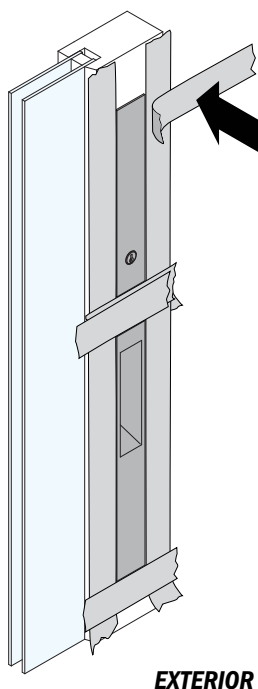
### NOTICE

**Do Not use a drill/driver for hardware application. Doing so could result in product damage.**

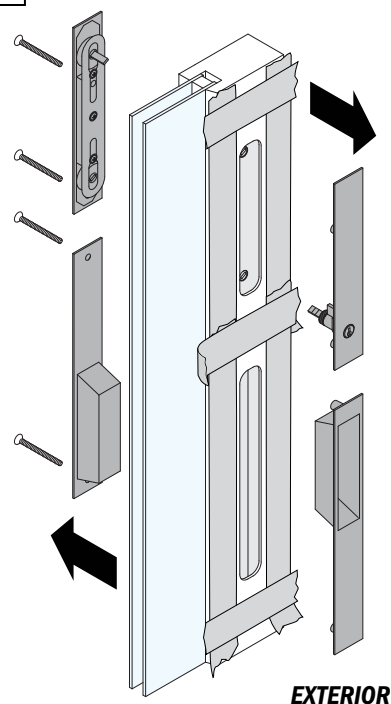
3



1 Apply hardware as shown.

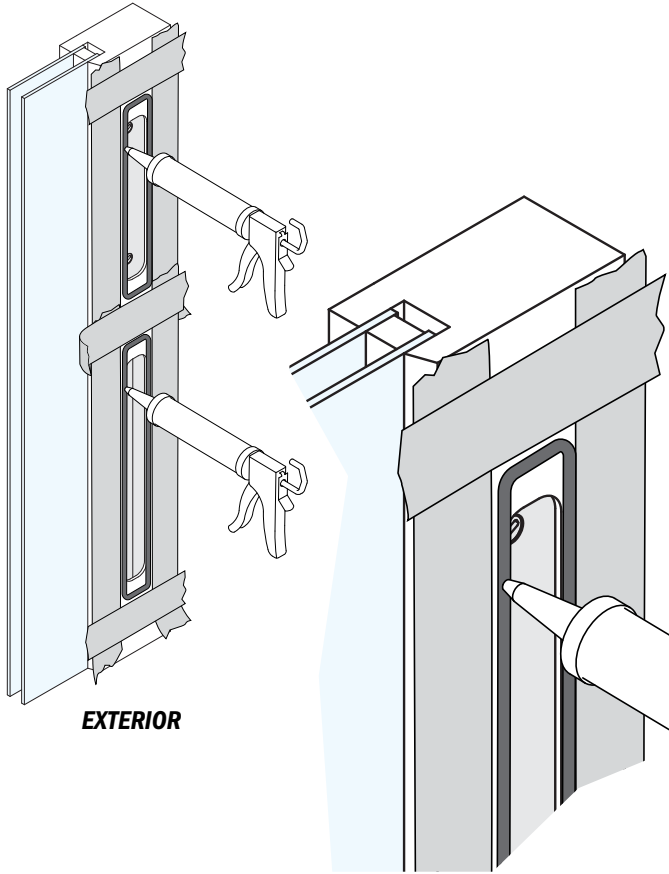


2 Mask around edges of exterior hand pull and exterior escutcheon plate with masking tape.



3 Remove the hardware.

4

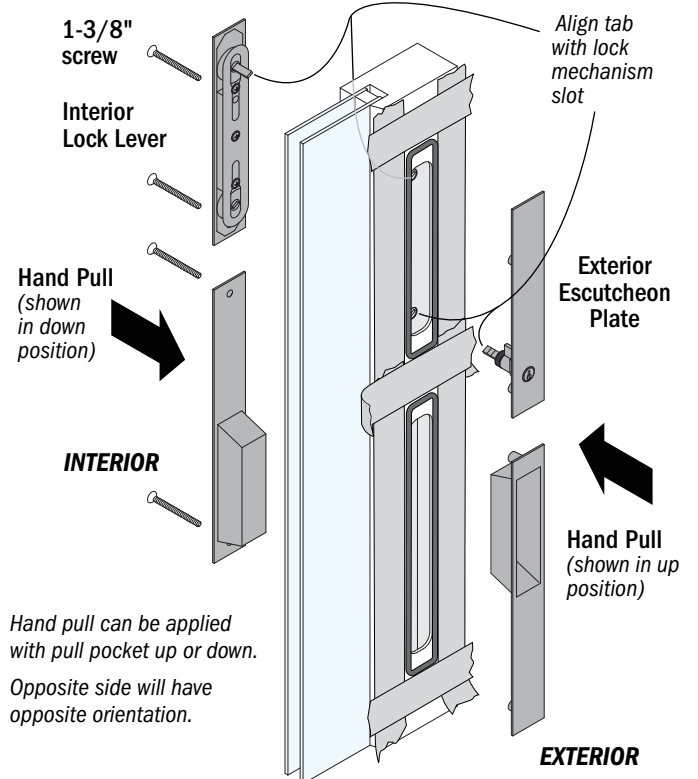


Apply 1/8" bead of sealant around the inside edge of taped frame as shown.

5

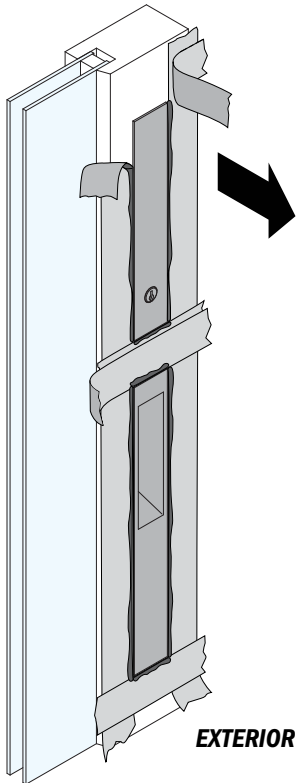
**NOTICE**

**Do Not** use a drill/driver for hardware application. Doing so could result in product damage.



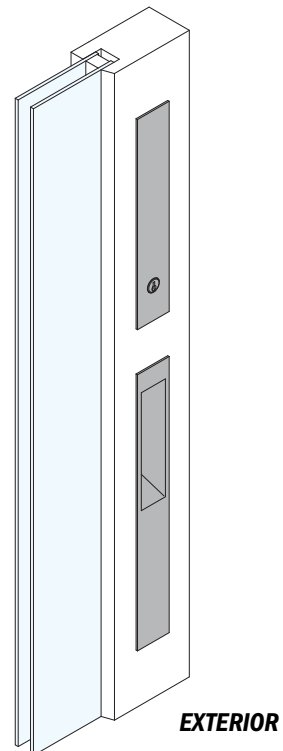
Reapply hardware and fasten with screws provided.

6



Carefully peel off masking tape to remove sealant squeeze out.

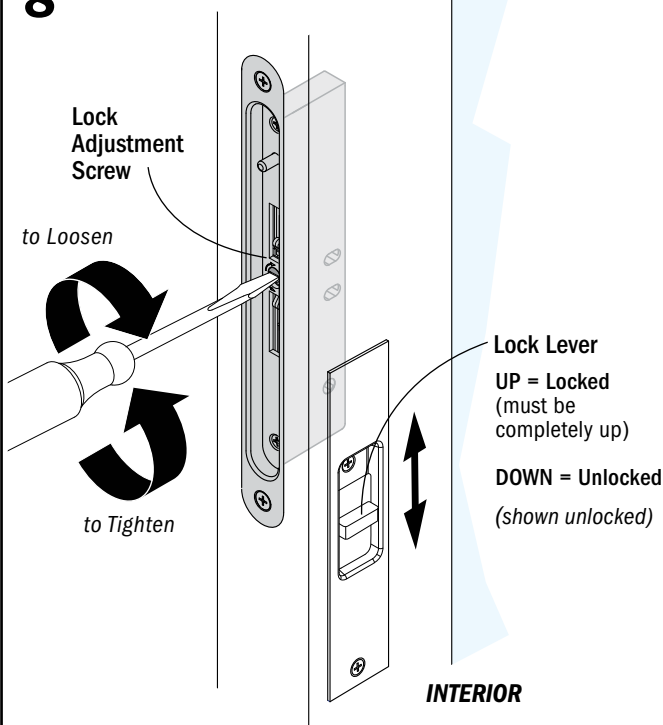
7



Clean area with non-abrasive cleaner.

# 8

## Lock Adjustment



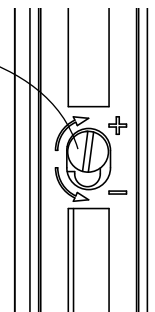
Adjust lock engagement by fully turning the lock adjustment screw clockwise (to loosen/extend hooks) until snug, then turn the adjustment screw two (2) full turns counterclockwise. Close door and check lock engagement. If lock does not engage, open door and turn lock adjustment screw clockwise in half-turn increments (to loosen/extend hooks). Check lock engagement until lock operates smoothly.

**(Open, close and lock the door several times, checking lock engagement by pulling on handle while in locked position.)**

### WARNING

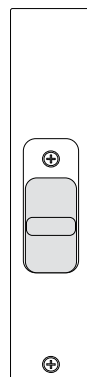
Failure to properly adjust lock adjustment screw will prevent lock from operating and will result in loss of building security.

Lock Adjustment Screw  
Turn clockwise to loosen lock engagement.  
Turn counterclockwise to tighten lock engagement.

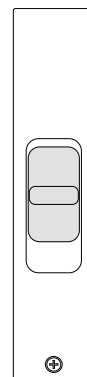


### WARNING

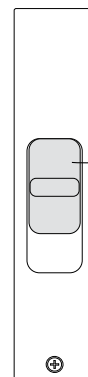
Lock lever must be positioned completely up for full lock engagement. Failure to do so will result in loss of building security.



UNLOCKED



UNLOCKED



LOCKED

Lock Lever (must be completely up for full lock engagement.)

► Hardware application and adjustment is complete.

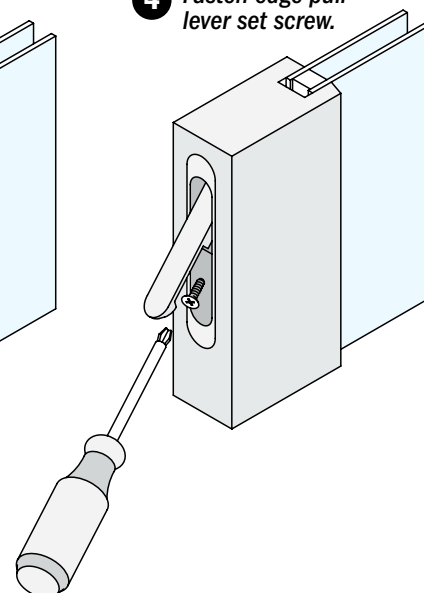
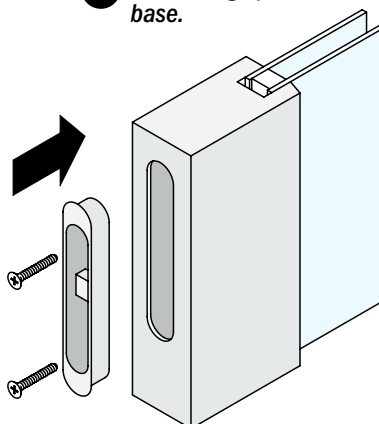
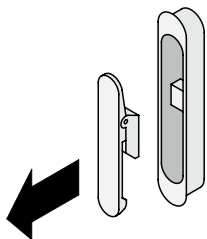
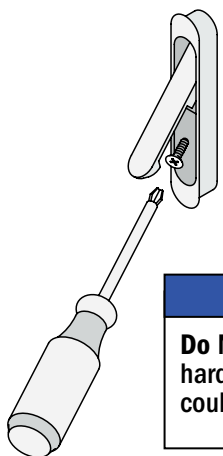
## Optional Edge Pull (MultiGlide™ Door Only)

**1** Remove edge pull lever set screw.

**2** Remove edge pull lever.

**3** Fasten edge pull base.

**4** Fasten edge pull lever set screw.



### NOTICE

**Do Not use a drill/driver for hardware application. Doing so could result in product damage.**

Disassemble edge pull lever from base. Place base in panel rout and fasten with screws provided. Reposition edge pull lever and fasten set screw.

► Edge pull application is complete.