

ADLM 2026 Call for Proposals: How to submit a successful proposal

ADLM 2026 to be held at the Anaheim Convention Center from July 26 – July 30, 2026.
meeting.myadlm.org
annualmeeting@myadlm.org

2026 AMOC members



Chair

Amy Karger, MD, PhD, DABCC, FADLM
University of Minnesota
Minneapolis, MN



Vice Chair, Courses and Sessions

Deb French, PhD, DABCC, FADLM
University of California, San Francisco
San Francisco, CA



Vice Chair, Roundtables and Posters

Joe El-Khoury, PhD, DABCC, FADLM
Yale University
West Haven, CT

Amy K.

AMOC Coordinators

Plenary Coordinator

Jason Park, MD, PhD, DABCC

Scientific Session Coordinators

Lorin Bachmann, PhD, DABCC, MT (ASCP)
Bridgit Crews, PhD, DABCC, FADLM
Reid Rosehill, MS, MT (ASCP)
Rajeevan Selvaratnam, PhD, DABCC, FADLM, NRCC
Elitza Theel, PhD, ABMM
Sarina Yang, PhD, DABCC

Roundtable Coordinators

Erika Deaton-Mohney, MLS (ASCP), CPP
Kamisha Johnson-Davis, PhD, DABCC, FADLM

Poster Coordinators

Sridevi Devaraj, PhD, DABCC, FADLM, FRC
Jack Maggiore, PhD, DABCC, FADLM, MT (ASCP)

Agenda

meeting.myadlm.org
annualmeeting@myadlm.org

- 1 **Dates, roles, and benefits**
- 2 **Accreditation**
- 3 **AMOC goals and priorities**
- 4 **Types of sessions**
- 5 **Proposal preparation**
- 6 **Proposal tips**

Emily

Dates, roles, and benefits

meeting.myadlm.org
annualmeeting@myadlm.org

Deadline to submit.

Online submissions and speaker disclosures must be received by this date to be considered.

Nov 6, 2025

Proposals selected.

AMOC convenes to review proposal submissions.

Jan 2026

Revisions and scheduling.

AMOC may reach out for questions, comments, edits. Accepted proposals are scheduled.

Feb 2026

Proposal notices sent.

Decision notices will be sent to **moderators** and **roundtable speakers**. Speakers should contact the session moderator for updates.

Mar 2026

ADLM 2026

Anaheim Convention Center, Anaheim, CA.

Jul 26–30, 2026

Dates

meeting.myadlm.org
annualmeeting@myadlm.org

Moderators



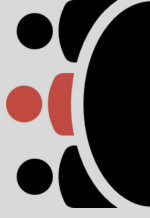
Proposal submitter. ADLM University Course or Scientific Session moderator. Primary contact. Responsible for proposal submission and may add speakers to their course or session proposal. Most moderators are also a speaker in their proposal. If serving as a **moderator only**, you do not receive speaker benefits.

Speakers



ADLM University Course or Scientific Session speaker. Added to proposals by the moderator. Must complete disclosures. Accepted speakers receive full conference registration, economy roundtrip travel, and \$500 USD honorarium.

Roundtable Speakers



Proposal submitter. Only faculty in roundtables. Primary contact and responsible for submitting roundtable proposal. Roundtable Speakers receive \$50 compensation per day they present, and do not receive complimentary registration or any other compensation.

Faculty roles and benefits

meeting.myadlm.org
annualmeeting@myadlm.org

Faculty are limited to two courses or sessions, excluding roundtables. All faculty must present in person.

Accreditation



meeting.myadlm.org
annualmeeting@myadlm.org

Emily



ADLM Annual Meeting & types of accreditation

Emily



ACCENT guidelines permit owners and employees of “ineligible companies”.
<https://myadlm.org/accent>



ACCME has strict requirements on when and how owners and employees of “ineligible companies” may be allowed (Standard 3).
<https://accme.org/standards>

Ineligible companies are those whose primary business is producing, marketing, selling, re-selling, or distributing healthcare products used by or on patients.
<https://accme.org/eligibility>

ADLM Annual Meeting & types of accreditation

Emily



- ✓ University Courses
- ✓ Scientific Sessions
- ✓ Roundtables

Content that is ACCENT certified does not have restrictions on owners or employers of companies.



- ? University Courses
- ? Scientific Sessions
- Roundtables
Not CME eligible.

CME certified has restrictions on owners or employers of companies. Set by ACCME.

Amy K.

AMOC goals and priorities

meeting.myadlm.org
annualmeeting@myadlm.org

2026: An Engaging & Empowering Program

Our goal is to create a scientific program that engages our core audience and empowers them to change their practice. A program that meets the needs of our community and attracts newer audiences and faculty.

- Build a program that reflects and compliments [ADLM's Strategic Plan](#) and mission
- Approach core scientific areas in new ways
 - New voices, new formats, new approaches to learning
- Embrace the spectrum of laboratory medicine
- Inclusive and diverse
- Some topics to consider in delivering the latest and greatest information:
 - New clinical guidance
 - Emerging technologies in the lab and lab-adjacent fields and point of care
 - New or impending regulatory changes
 - Strategic areas: Data science, microbiology, POCT, pediatrics, CLS-related content
 - “Beyond the book” and earlier career training



Plenaries

5 renowned speakers.



ADLM University Courses

Up to 8 interactive courses. Teach core skills.



Scientific Sessions (1.5-hour)

65 sessions. Deliver essential information. Wide variety in topic and format.



Roundtables (1-hour)

Up to 90. Interactive small group discussions. Wide variety in topic and format.



Posters

Call for abstracts open in November.

Types of sessions for submission

meeting.myadlm.org
annualmeeting@myadlm.org

Amy K.



Plenaries

5 renowned speakers.

Amy K.



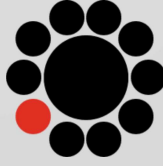
ADLM University Courses

Up to 8 interactive courses. Teach core skills.



Scientific Sessions (1.5-hour)

65 sessions. Deliver essential information. Wide variety in topic and format.



Roundtables (1-hour)

Up to 90. Interactive small group discussions. Wide variety in topic and format.



Posters

Call for abstracts open in November.

Types of sessions for submission

meeting.myadlm.org
annualmeeting@myadlm.org

ADLM University Courses

Preconference workshop-style courses to teach **hands-on skills**

3-hour → 2-3 total speakers

6-hour → 3-4 total speakers



Ticketed 3- or 6-hour highly interactive courses held Sunday.

Up to ~50 participants.

Room set with roundtables for 6-8 per table.

AV including audience polling available.

Includes a **moderator** and **speakers**.

ADLM is planning for up to 8 courses. Can have various education formats that are interactive such as demonstrations, group exercises, case-based design. Often include hands-on exercises and tutorials in small group formats.

Deb F.



Tips for University Courses

Deb F.

Equip with skills and resources



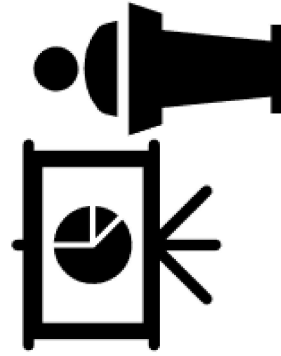
- Focus on content core to laboratory medicine or in an emerging area that the broader community needs to learn about, taught by experienced instructors.
- Clearly indicate what the attendees will be able to do during the course (course outline) and what skills they will gain (description).
- Put the lessons into practice with hands-on experiences like exercises, tutorials, live demos, role playing.
- Provide slides and other resources for continual reference.
- Note that space is very limited. Reach out to annualmeeting@myadlm.org before assembling.

Scientific Sessions

Core of the scientific program to bring the latest across the field of lab medicine

Amy K.

Typically, 2-3 total speakers.



1.5-hour sessions held Monday-Thursday.

Participants vary widely from ~50-250.

Theater seating (chairs only). Other room setups may be available on request.

AV including audience polling available.

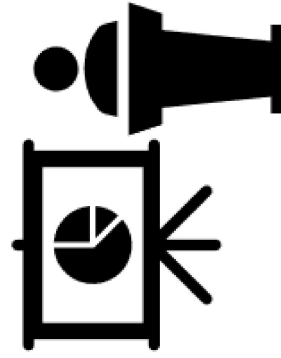
Includes a **moderator** and **speakers**.

Many opportunities. Each year, ADLM offers ~65 sessions. Wide variety of education formats may include audience polls, cases, debate, didactic lecture, mock courtroom, panels, etc. We encourage session submitters to think beyond didactic and make meaningful design choices.

Tips for Scientific Sessions

Amy K.

Engage and empower laboratorians



- Reduce or skip the topic introduction. Unless it's a brand-new topic to the audience, only a brief intro is needed during the first talk. Then, get to the new content.
- Focus on empowering the audience through recommendations for implementation or further study.
- Consider when to bring in content from lab-adjacent fields.
- Change up the format. AMOC invites creativity in session design to enhance learning.

Examples of Scientific Sessions that engage

Amy K.

Point-Counterpoint

When there are opposing viewpoints or recommendations. Needs to be well-designed and facilitated to have clear “sides”.

Case-Based Discussion

Scenarios designed test participants knowledge followed by expert answers, recommendations, and resources.

Choose Your Own Adventure

Assemble a broader list of cases or discussion topics, then let the audience choose what they are interested in.

“Lightning Talks”

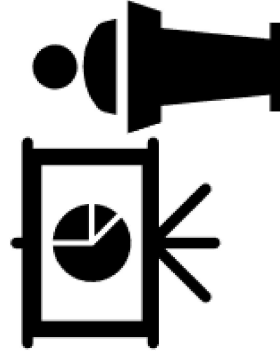
Succession of short talks from speakers to cover several niche or smaller topics in a session.

Patient voice or Testimonials

Incorporating a patient advocate or representative on topics that have laboratory impact. Prerecorded video is a great tool.

Mock courtroom

A specific setup and session design to imitate a courtroom experience.



Roundtables (1-hour)

Opportunity to engage up to 10 participants in a unique setting

1 roundtable speaker only



Joe E.



Ticketed 1-hour roundtables held Mon-Wed.

Up to 10 participants (including speaker).

Presented twice (morning/mid-day).

Single round table.

No AV or audience polling available.

Includes a single **roundtable speaker**.

Many opportunities. Each year, ADLM offers 80-90 roundtables. Unique opportunity to directly engage participants in small group education. Incredibly flexible in education design. Main goal is to think beyond the lecture and beyond the laptop.

Tips for Roundtables

Joe E.

Roundtables **≠** Lectures



- Focus on a topic that will inspire discussion and think of yourself as the facilitator.
- Adapt existing lecture content by inserting questions like:
 - How did your lab approach “BLANK” issue?
 - Did you have a similar experience?
 - Have you adopted these guidelines?
 - What are some common problems with “BLANK”
- Try out a new topic related to your work.
- Leave time at the end for a discussion, not a Q&A.

Examples of Roundtables that engage

Joe E.

Practical Applications

Discussion on the application of current or emerging algorithms, processes, or equipment. Troubleshooting guides or resources guides for common issues. Great to provide templates or materials.

Hands-On Visuals

Physical examples of results (e.g., gel examples, imaging results) with discussion on setup, interpretation, or troubleshooting.

“Show-and-Tell” Techniques

Physical examples of equipment such as mass spec fittings or tubing, self-collection kits, POCT devices, etc. for demonstration on use and common errors or issues.

Case-Based Discussion

Series of scenarios designed to frame a discussion or test participants knowledge on current best practices. Great to have open discussion followed by expert recommendations and resources.

Role playing

Present the strategy or skill, such as communication or advocacy, then get everyone to practice on the spot.

Group Think Tank

Posing a common challenge to the group and facilitate dialogue on professional experiences from roundtable speaker and participants.



Emily

Proposal preparation

meeting.myadlm.org
annualmeeting@myadlm.org



Draft stage



Log in and enter it online

Emily

Download the appropriate template.

Use to collaborate.

Save your work often.

NEW SUBMISSIONS ▾ VIEW/EDIT SUBMISSIONS

Questions? Contact annualmeeting@myadlm.org.

Key Dates and Information

- Deadline to submit additional proposals is Thursday, November 6, 2025.
- An ADLM account is required to submit a proposal and for each speaker.
- Submissions are not considered complete until all speakers have completed their proposals.
- Accurate and up-to-date email information is essential for communication.
- Proposal submitters will be notified of decisions by email in early March.
- ADLM 2026 will be held July 26 - 30, 2026 at the Anaheim Convention Center. Accepted proposals are expected to present in person.

[Submit a new Scientific Session proposal](#)

[Submit a new University Course proposal](#)

[Submit a new Roundtable proposal](#)



Submit online

meeting.myadlm.org
annualmeeting@myadlm.org

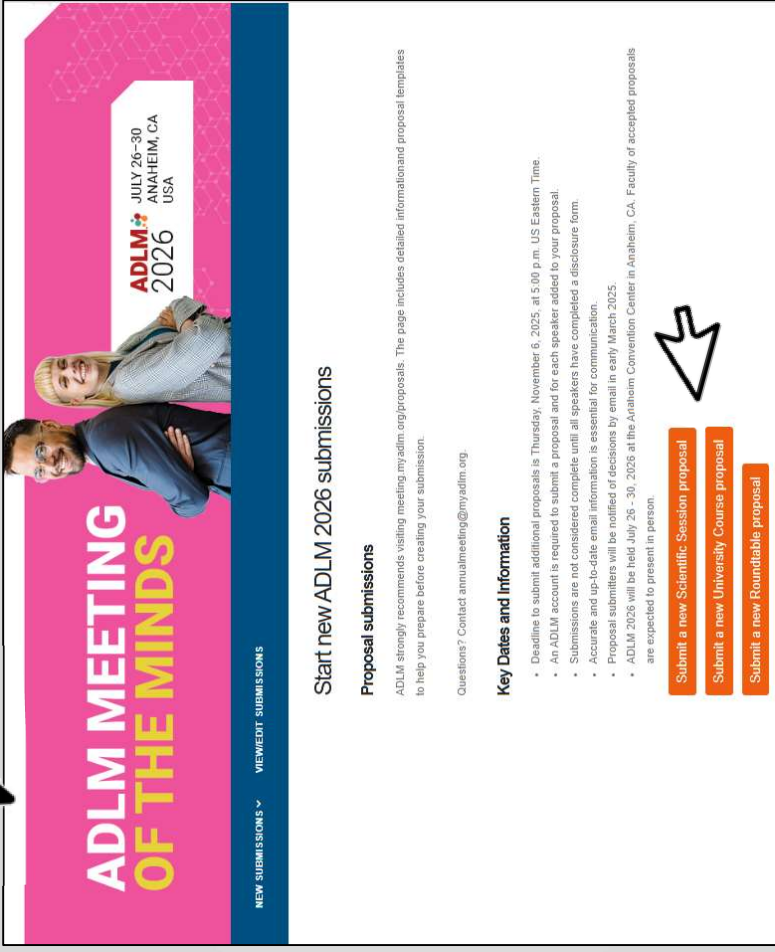
Login with your
ADLM credentials

Complete the
proposal parts

Submit the
proposal

 **SUBMIT/EDIT PROPOSALS**

Emily



ADLM MEETING OF THE MINDS
JULY 26-30 ANAHEIM, CA USA

NEW SUBMISSIONS | **VIEW/EDIT SUBMISSIONS**

Start new ADLM 2026 submissions

Proposal submissions


ADLM strongly recommends visiting meeting.myadlm.org/proposals. The page includes detailed information and proposal templates to help you prepare before creating your submission.

Questions? Contact annualmeeting@myadlm.org.

Key Dates and Information

- Deadline to submit additional proposals is Thursday, November 6, 2025, at 5:00 p.m. US Eastern Time.
- An ADLM account is required to submit a proposal and for each speaker added to your proposal.
- Submissions are not considered complete until all speakers have completed a disclosure form.
- Accurate and up-to-date email information is essential for communication.
- Proposal submitters will be notified of decisions by email in early March 2025.
- ADLM 2026 will be held July 26-30, 2026 at the Anaheim Convention Center in Anaheim, CA. Faculty of accepted proposals are expected to present in person.

[Submit a new Scientific Session proposal](#)
[Submit a new University Course proposal](#)
[Submit a new Roundtable proposal](#)



Note: For courses and sessions, all speakers must complete an online disclosure for the proposal to be considered complete. Each speaker will be automatically sent a personal link once the proposal is submitted.



Proposal preparation

Role	Moderator or Roundtable Speaker
Session type	ADLM University Course, Scientific Session, Roundtable
Title	Clear, concise, compelling. 25 words or less.
Overview	Crucial for review and public. Define the problem, why we should care, and how your proposal will address it (what you'll cover and how). Max 150 words.
Course Outline	ADLM University Course only. Detailed outline of course structure and interactive elements. Example in template. Max 500 words.
Session Design	Scientific Session only. Define the core way that content will be presented. Design with the format that meet your goals
Statement of Need	Provide supporting information on why this is an area of educational need. Go beyond anecdotal evidence. If proposing more speakers than typical or unique design/setup, provide the rationale here.
References	Minimum of 2 peer-reviewed references. Does not need to be an exhaustive list.
Learning Objectives	Provide 3 objectives of what participants will be able to do after participating. Go beyond "understand", "know", "discuss", and "describe". Consider "apply", "incorporate", "interpret", etc.
Instruction Level	Basic. Intermediate. Advanced.
Topic(s)	Primary and optional secondary topic from the list.
Special setup	Scientific Sessions and ADLM University Courses. Describe any special setup needed for your proposal to be successful.
Audience(s)	Proposals rarely serve all. Select the audiences the proposal is designed for.
Partners	List ADLM core committees, councils, and Divisions actively involved in developing the proposal. Not intended for endorsements.
Speakers & Presentations	Include the moderator as a speaker if applicable. Each speaker needs a unique title to be listed in proposal review. Max 25 words.

Emily

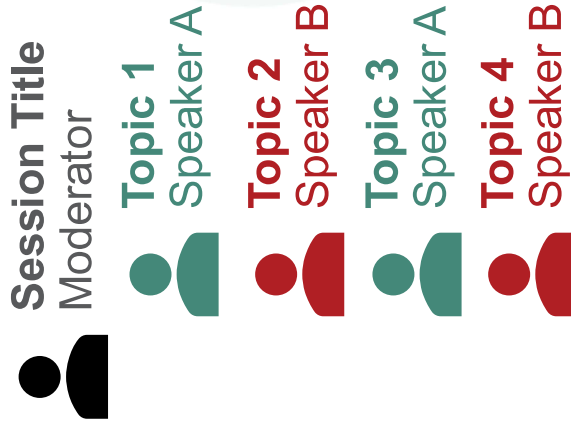
Examples for Entering Moderator and Speakers for Courses and Sessions

Emily

Standard approach



Multi-topic/person



- Major goal: Convey session flow to AMOC and future attendees.
- Contact annualmeeting@myadlm.org for specific questions.

Proposal tips

meeting.myadlm.org
annualmeeting@myadlm.org

- 1 **Define your problem and audience.**
- 2 **Describe your idea succinctly.**
- 3 **Design the session to meet your specific goals.**
- 4 **Identify faculty that bring unique perspectives.**
- 5 **Double-check your work.**

1 Define your problem and audience.



- Who are you trying to reach?
Audience
- What is their problem?
Educational and/or professional need

Amy K.

1 Define your problem and audience.

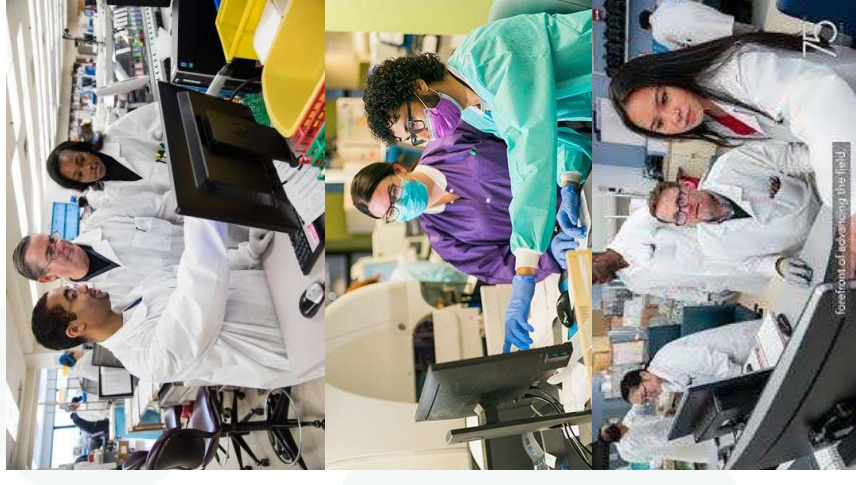
- General advice for getting started:
 - Look at the literature
 - Look at ADLM's strategic plan
 - Ask your peers
- University Courses: contact ADLM
- Roundtables:
 - Adapt existing content
 - Try out a new topic
- Scientific Sessions:
 - Differentiate from past years
 - Submit on what you know / you're an expert in

Amy K.

2 Describe your idea succinctly.

- Clearly state your proposal's purpose and goals.
- Get the main point into the first six words. Most focus on the first few words when browsing.
- Use shorter succinct sentences.
- Be specific and avoid anecdotal evidence.
- Remember that your audience will be laboratory professionals. This includes the proposal reviewers, and if accepted, the meeting participants.

Amy K.



3 Design the session to meet your specific goals.

Amy K.

Patient voice Video testimonials
Panels Small group
Quizzes **Didactic** discussion
 Case-based
Mock court **Experts** **Debate**
Point/Counterpoint Lightning talks
Audience polls Hands-on exercises

Didactic
Presentations Case-based
Expert Talks **Lectures**



3 Design the session to meet your specific goals.

- Choose the format(s) that will help with your goals.
- Choose the format(s) that will work in your session type. E.g., the same formats in a course won't necessarily work in a session or roundtable.
- Education formats should be a meaningful part of your education design.
- Don't overdo the design! Participants need to be able to easily join late or depart early.

4 Identify faculty that bring unique perspectives.

We encourage a diverse representation of speakers in the meeting that includes gender, race/ethnicity, career stage, and professional workplace among other considerations.

- Clinician perspectives
- Patient voice
- Adjacent/related fields
- Faculty that haven't previously presented in the meeting

4 Identify faculty that bring unique perspectives.

Clinician perspectives

and

Patient voice

Approaches to bringing clinician and/or patient perspectives into the session.

- Laboratorian and clinician speakers
- Patient or patient advocate as speaker
- Presentation of clinical impact
- Prerecorded video comment
- Experience testimonials by video

4 Identify faculty that bring unique perspectives.

Adjacent/related fields

Areas of healthcare that often intersect or interact with the lab. Fields where experts can provide new insights to laboratorians.

- Data science
- Heme/coag
- Immunology
- Microbiology
- Other

4 Identify faculty that bring unique perspectives.

Amy K.

First time presenters

Tips and considerations for first-time presenters or new voices.

- Roundtables are great entry point for early career individuals
- Connecting with ADLM members on the Artery, through Divisions, or other outreach can help.
- If outreaching to a new voice, give context on the organization and meeting, the value of their perspective, and speaker benefits.

5 Double-check your work.

- Accuracy
- Clarity
- Spelling
- Grammar
- Professional voice and tone

Did you
proofread?

Amy K.

Submitting online

meeting.myadlm.org
annualmeeting@myadlm.org

- November 6 deadline
- Membership not required but an ADLM account is.
- Free to submit.
- Email us with questions. annualmeeting@myadlm.org

Amy K.

Thank you!

