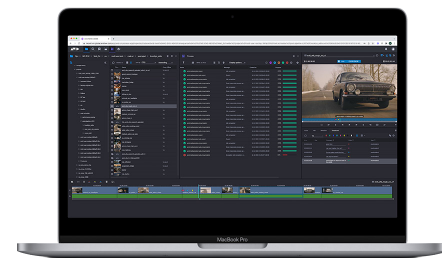




AVID NEXIS | EDGE

Remote video editing and collaboration made easy



Extending the power of the proven, collaborative production tools the media and entertainment industry relies on daily, Avid NEXIS® | EDGE enables editors to work from anywhere with the same media access, workflow, and user experience as if they were editing at the facility. And with the Avid NEXIS | EDGE web client, team members can find, organize, storyboard, edit, and review content at the facility, at home, or on location, extending the limits of what's possible.

WORK FROM ANYWHERE

Edit remotely leveraging the known and trusted resources of your facility and get the same experience as editing in-house. Change location without changing your workflow—even when disconnected from the Internet. And browse, search, organize, log, share, play, edit, and review content using just a web browser, expanding collaboration to your extended team.

WORK WITH ANYONE

Expand your distributed workforce worldwide to bring in the talent you want, no matter where they live. Media Composer | Enterprise and web client users can collaborate fully, while Adobe Premiere Pro users can leverage EDGE to browse and search for media. As projects ramp up or down, you can scale your team quickly as needed, without constraint or physical boundaries.

CREATE WITH THE TOOLS YOU LOVE

As a fully integrated panel within Media Composer | Enterprise, Avid NEXIS | EDGE connects with your on-premises Avid NEXIS shared storage, optimizing your editing workflow without changing it. Enjoy the same familiar shared projects workflow, including genuine Avid bin locking, no matter where you are.

SIMPLIFY YOUR WORKFLOW

With its zero-relink workflow and smart technology that automatically adapts to the latency and bandwidth of your connection to provide an optimal user experience, Media Composer editors can go from working at the facility to working at home without the headaches. And teams can move from project prep and editing to finishing, review, and delivery with less stress.

STREAMLINE PROJECT PREP AND REVIEW

With the web client, assistant editors can organize projects, create bins and sequences, and group media quickly to support the editing team. Assets can also be logged faster and more consistently as new footage comes in, enabling better search results. And showrunners, producers, and marketing execs can collaborate with editors and review content from anywhere.

OPTIMIZE SPEND WITH A SUBSCRIPTION

Avid NEXIS | EDGE and Media Composer | Distributed Processing are included with Media Composer | Enterprise subscriptions at no additional charge, providing the greatest cost efficiency. Or add an Avid NEXIS | EDGE subscription to an existing Premiere Pro production environment (with Avid NEXIS) to enable Adobe users to collaborate. And connect the rest of your team by adding subscriptions for the web client.

KEY FEATURES

- › Enable dozens of contributors to collaborate from anywhere with a secure proxy workflow for Media Composer | Enterprise editors and a web-based toolset for non-editors
- › Browse, access, and edit projects and media using Media Composer | Enterprise or a web browser
- › Go from working at the facility to working remotely by simply selecting between proxy or high-res media in the Media Composer | Enterprise timeline—without manual relinking
- › Enjoy the same Media Composer shared bin and project workflow whether you're in the facility, on location, or at home
- › Find all clips that contain specific words of spoken dialogue in seconds with the Phonetic Index option
- › Pack up a project quickly to work in locations without Internet—or when air-gapped
- › Organize and prep projects to support the editing team—without needing Media Composer or Premiere Pro
- › Review footage and sequences from anywhere using just a web browser
- › Bring in the talent you really want to work on projects—regardless of their location
- › Get Avid NEXIS | EDGE and Media Composer | Distributed Processing included with Media Composer | Enterprise subscriptions at no additional charge

FOR MORE INFORMATION, VISIT
avid.com/NEXIS-EDGE





Avid NEXIS | EDGE—Remote video editing and collaboration made easy

SUPPORTED MEDIA TOOLS AND SHARED STORAGE



MEDIA COMPOSER | ENTERPRISE



AVID NEXIS | EDGE
WEB CLIENT (VIA CHROME)



ADOBE PREMIERE PRO



MEDIA COMPOSER | DISTRIBUTED
PROCESSING



AVID NEXIS

QUALIFIED SERVER HARDWARE

Avid has qualified two HP servers for use as the Avid NEXIS | EDGE server, depending on the size of your team (the number of simultaneous users/Web Client Connectors required). A single Avid NEXIS | EDGE server can support up to 25 Web Client Connectors, which includes users connecting from Google Chrome.

FOR TEAMS OR PRODUCTIONS REQUIRING 1–15 WEB CLIENT CONNECTORS

- > HPE ProLiant DL360 Gen10 server running Windows Server Standard 2019
- > Dual Intel Xeon Silver 4210R processors
- > 96 GB RAM
- > 2 x 500 GB (or greater) SSD Drives, RAID1
- > 10Gb 2-port 530SFP+ adapter with 2 x SR Transceivers
- > Dual 500W power supply

FOR TEAMS OR PRODUCTIONS REQUIRING UP TO 25 WEB CLIENT CONNECTORS

- > HPE ProLiant DL360 Gen10 server running Windows Server Standard 2019
- > Dual Intel Xeon Gold 5218 processors
- > 128 GB RAM
- > 2 x 500 GB (or greater) SSD Drives, RAID1
- > 10Gb 2-port 530SFP+ adapter with 2 x SR Transceivers
- > Dual 500W power supply

Avid NEXIS | EDGE also allows for up to 75 concurrently connected Media Composer | Enterprise systems. Because Media Composer plays media directly from Avid NEXIS storage—even when connecting remotely—and not through the Avid NEXIS | EDGE server, Media Composer | Enterprise places very little computational impact on the Avid NEXIS | EDGE server itself.

SYSTEM REQUIREMENTS

USER-PROVIDED SERVER HARDWARE

You may opt to provide your own hardware to use as your Avid NEXIS | EDGE server. In this case, we strongly recommend that it meets or exceeds the following minimum specifications:

- > Minimum file server requirements* (to run Avid NEXIS | EDGE):
 - > CPU: Dual Intel Xeon class, 10 physical cores (with multithreading)
 - > RAM: 96 GB (for 1–15 users), or 128 GB (for 16–25 users)
 - > Storage: 500 GB SSD for operating system and Avid NEXIS | EDGE-related applications
 - > Network adapters: One Avid-qualified adapter minimum (as specified in the Avid NEXIS documentation)

Note that Avid cannot qualify user-provided server hardware and can only provide these minimum specifications as a guideline. Because of this, we cannot offer any performance expectations from user-provided hardware.

- > Storage: Avid NEXIS (on-premises system) version 2023.3 or later; version 2024.2 or later recommended
- > For full-featured editorial (on-premises): Avid Media Composer | Enterprise** minimum version 2022.10; recommended version 2023.8, or Adobe Premiere Pro 2022.6.2 or later
- > For remote proxy editing: Media Composer | Enterprise minimum version 2022.10; recommended version 2023.8
- > For web client access: Google Chrome on macOS or Windows*

* Customer must provide their own server hardware.

** Avid NEXIS | EDGE is included with Media Composer | Enterprise at no additional cost (along with Media Composer | Distributed Processing and SRT).

FOR MORE INFORMATION, VISIT avid.com/NEXIS-EDGE