

Nuvola Platinum+



- Wide modulation ratio up to 1:10 better efficiency and noiseless operation
- Gas Adaptive Control (GAC) system: combustion automatic control to maintain constantly the highest level of efficiency
- High efficiency full modulating pump
- Removable control panel for wall-hung installation with wide text display, regulation knob, menu selection buttons and back-lighting; supplied with the boiler
- High DHW performances: up to 500 lt in 30 minutes (ΔT 30°C)
- Built-in solar control
- Stainless steel 40 lt cylinder
- Remote control Baxi Mago available as optional
- Frontal access for advanced diagnostics
- \varnothing 50 mm flue pipe mod. 24 kW, 40 m max length
- Installation kit supplied with the boiler (telescopic connection pipes/gas inlet/gas tap)

Hydraulic system

3 way electric diverter valve
 Stainless steel premixing burner
 Stainless steel heat exchanger
 Stainless steel tank
 Modulating fan with electronic speed adjusting system
 Automatic by-pass
 High efficiency full modulating pump of the heating circuit with built-in air vent
 System to prevent pump and diverter valve sticking operating every 24 hours
 Heating circuit relief valve set at 3 bar
 Tank relief valve set at 8 bar
 Integrated sanitary 2 litres expansion vessel
 Sanitary recirculation option

Thermoregulation system

Built-in climatic regulation (outdoor sensor available as optional)
 Control of multi-zones system option
 Room sensor, heating circuit and sanitary timers included in the control panel

Control system

Overheat limit thermostat of the water/flue exchanger
 Hydraulic pressure switch to prevent boiler operating in event of low water
 Overheat limit thermostat against flues overheat
 Electronic temperatures control by NTC sensors
 Anti legionella function
 Full anti-frost device
 Electronic thermometer
 Digital heating circuit pressure gauge

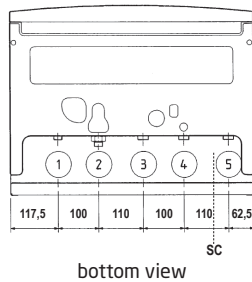
		Combi with DHW storage	
		24 GA	33 GA
Maximum heat input (DHW)	kW	24,7	34
Maximum heat input (heating)	kW	16,5	24,7
Minimum heat input	kW	2,5	3,4
Rated heat output for DHW circuit	kW	24	33
Useful heat output at rated heat output and high temperature regime* P_4	kW	16	24
Useful heat output at 30% of rated heat output and low temperature regime** P_1	kW	5,4	8
Load profile		XL	XL
Seasonal space heating energy efficiency class		A	A
Water heating energy efficiency class		A	A
Seasonal space heating energy efficiency η_s	%	93	93
Useful efficiency at rated heat output and high temperature regime* η_4	%	88	87,9
Useful efficiency at 30% of rated heat output and low temperature regime** η_1	%	98,1	98,1
Efficiency P_n (lower calorific value) - average temperature 70 °C	%	97,7	97,6
Efficiency 30% (lower calorific value) - return temperature 30 °C	%	108,9	108,9
NOx emissions	mg/kWh	18	26
Minimum working temperature	°C	-5	-5
Expansion vessel capacity	l	7,5	7,5
Heating temperature range	°C	25-80	25-80
DHW temperature range	°C	35-60	35-60
Tank capacity	l	40	40
Tank expansion vessel capacity	l	2	2
Specific flow (EN 13203-1)	l/min	14,9	18,3
DHW production ΔT 25°C ⁽¹⁾	l/min	13,8	18,9
DHW production at discharge ΔT 30°C ⁽¹⁾	l/30'	385	500
Maximum pressure heating circuit	bar	3	3
Maximum pressure DHW circuit	bar	8	8
Coaxial flue system \varnothing 60/100 max length	m	10	10
Dual flue system \varnothing 80 max length	m	80	80
Maximum flue mass flow rate	kg/s	0,012	0,016
Minimum flue mass flow rate	kg/s	0,001	0,002
Maximum flue temperature	°C	80	80
Dimensions (h x w x d)	mm	950 x 600 x 466	
Net weight	kg	65,5	67,5
Gas type		Natural gas/LPG	
Rated power supply	W	91	105
Auxiliary electrical power consumption - Full load el_{max}	kW	0,025	0,035
Auxiliary electrical power - Partial load el_{min}	kW	0,012	0,012
Auxiliary electrical power - Stand-by P_{SB}	kW	0,004	0,004
Sound power level, indoor L_{WA}	dB	49	53
Grade of protection		IPX5D	IPX5D

* High temperature regime: 60°C return temperature at heater inlet and 80°C flow temperature at heater outlet

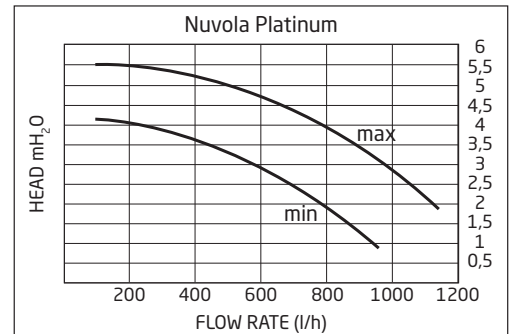
** Low temperature: 30°C return temperature (at heater inlet)

⁽¹⁾ without flow restrictor

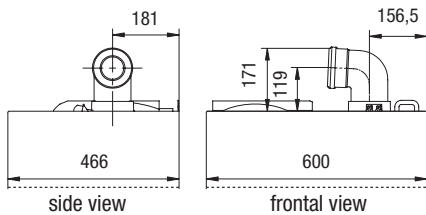
Nuvola Platinum+ 24 GA, 33 GA



- 1 DHW outlet G 1/2"
- 2 Mains water G 1/2"
- 3 Heating system return G 3/4"
- 4 Heating system flow G 3/4"
- 5 Gas inlet G 3/4"
- SC Condensing trap possible to connect on a pipe Ø22



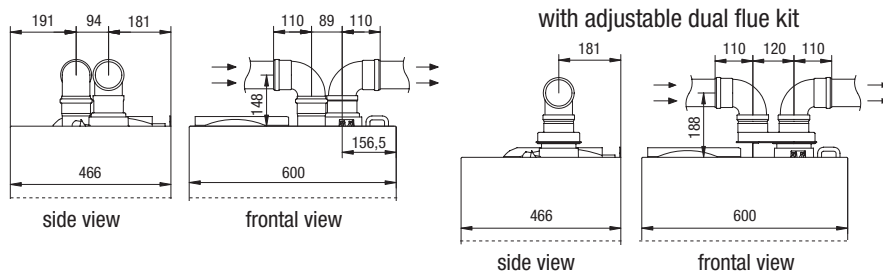
Coaxial flue system



Flue pipe dimensions (mm)

Model	Tubes maximum length (m)		Length reduction for a 90° bend insertion (m)	Length reduction for a 45° bend insertion (m)
	Ø 60/100	Ø 80/125		
Nuvola Platinum+	10	25	1	0,5

Dual flue system



Model	RIGID FLUE PIPE								
	Length (m)			Length (m)			Length (m)		
	intake pipe (L1) Ø80, flue pipe (L2) Ø80			intake pipe (L1) Ø80, flue pipe (L2) Ø60			intake pipe (L1) Ø80, flue pipe (L2) Ø50*		
	L max = L1+L2	L1 max	L2 max = L max-L1 max	L max = L1+L2	L1 max	L2 max = L max-L1 max	L max = L1+L2	L1 max	L2 max
Nuvola Platinum+	80	15	65	40	10	30	40	10	30

Ø 80 mm Length reduction for a 90° bend insertion (m) = 0,5 m, Length reduction for a 45° bend insertion (m) = 0,25 m
 Ø 60 mm Length reduction for a 90° bend insertion (m) = 1 m, Length reduction for a 45° bend insertion (m) = 0,5 m
 Ø 50 mm Length reduction for a 90° bend insertion (m) = 3 m, Length reduction for a 45° bend insertion (m) = 1,5 m

Model	FLEXIBLE FLUE PIPE					
	Length (m)			Length (m)		
	intake pipe (L1) Ø80, flue pipe (L2) Ø80			intake pipe (L1) Ø80, flue pipe (L2) Ø50*		
	L max = L1+L2	L1 max	L2 max = L max-L1 max	L max = L1+L2	L1 max	L2 max
Nuvola Platinum+	80	15	65	40	10	30

Ø 80 mm Length reduction for a 90° bend insertion (m) = 0,5 m, Length reduction for a 45° bend insertion (m) = 0,25 m
 Ø 50 mm Length reduction for a 90° bend insertion (m) = 2 m, Length reduction for a 45° bend insertion (m) = 1 m

For flue pipes Ø 80 and 60, the maximum length of intake pipe (L1 max) can't be exceeded
 * Ø50 flue pipe only for 24 kW boilers. The maximum length of intake (L1 max) and flue (L2 max) pipes can't be exceeded.