

Smart room thermostat

Baxi Mago



R-BUS 

OPENTHERM
ON/OFF



BSB 

Baxi Mago: it makes life easier

Baxi Mago is the smart room thermostat with integrated wi-fi, designed to ease the life of installers and end users. It allows to control the home comfort via mobile application, which can be downloaded from smartphones and tablets.

An innovative tool with a unique design, combining extreme ease of use and modern design.



Easy to use

The control knob allows to adjust temperature and scroll through menu. If the presence sensor is activated, the display screen will turn on automatically when moving towards the thermostat.



Easy guide to get started

With a few questions, the application automatically creates a schedule based on users' habits.



Fits in with lifestyle!

It is possible to create up to five different scenarios related to multiple temperature requirements.



Multiple devices

It is possible to connect one or more households and pair multiple devices, so each family member can interact.









More savings

Keep an eye on how much energy is used. It allows maximum efficiency and to manage the bills.

Compatibility

The Baxi Mago smart room thermostat is compatible with all Baxi boilers and Baxi splitted heat pumps. The model depends on the protocol (see table below).

Baxi Mago R-BUS	Baxi Mago + GTW16 OpenTherm or On/Off	Baxi Mago + GTW17 BSB
		
R-BUS 	OPENTHERM ON/OFF 	BSB 
Code: 7701201	Code: 7652303	Code: A7724375
Range		
Luna Platinum, Luna Classic and Alya WH, Alya FS, Alya FS Slim	Luna Duo-tec E, Duo-tec Compact E, Nuvola Duo-tec+, Luna3 Blue+, Eco5 Blue	Nuvola Platinum+, Power 32

For Nuvola Duo-tec+ compatibility is granted only with models produced from January 2018. For Luna3 Blue+ and Eco5 Blue only ON/OFF connection is possible.

For Nuvola Platinum+ and Power 32 compatibility is granted only with models produced from January 2018.

R-BUS

The R-Bus protocol by BDR Thermea Group is a communication protocol used in new boilers and heat pumps, part of our effort to enhance system integration and efficiency.

OpenTherm (OT)

OpenTherm is a widely used communication protocol. Developed as an open standard, it facilitates the exchange of information between boilers and thermostats. As an open standard, OpenTherm is designed to ensure compatibility between products from different manufacturers. This allows to match Baxi Mago with boilers from other producers.

BSB

BSB protocol by Siemens is polarity-sensitive. When wiring devices that use the BSB protocol, it is important to ensure that the connections are made with the correct polarity: see boilers' manuals for information about polarity.

For the updated compatibility, check
www.international.baxi.it

Features

Features	App	Baxi Mago	R-Bus	Open Therm	BSB	On/Off
Room temperature display	●	●	Yes	Yes	Yes	Yes
Outdoor temperature display*	●	●	Yes	Yes	Yes	No
Water pressure display**	●	●	Yes	Yes	Yes	No
Connection status	●	●	Yes	Yes	Yes	Yes
Lack of connection alert	●	●	Yes	Yes	Yes	Yes
Back-lit screen display	●	●	Yes	Yes	Yes	Yes
Time synchronization by internet and automatic time change	●	●	Yes	Yes	Yes	Yes
Pairing up to 7 Baxi Mago with a smart device	●	●	Yes	Yes	Yes	Yes
Pairing Baxi Mago with multiple smart devices	●	●	Yes	Yes	Yes	Yes
List and management of smart devices paired	●	●	Yes	Yes	Yes	Yes
Home screen customisation	●	●	Yes	Yes	Yes	Yes
Boiler fault display and alert	●	●	Yes	Yes	Yes	No
Error history	●	●	Yes	Yes	Yes	No
Setting consumptions**	●	●	Yes	Yes	Yes	No
Changing the temperature for a short period in scheduling mode	●	●	Yes	Yes	Yes	Yes
Subscription costs	Free	Free	Yes	Yes	Yes	Yes
Setting room temperature	●	●	Yes	Yes	Yes	Yes
Setting room temperature without internet connection	●	●	Yes	Yes	Yes	Yes
Functioning without batteries	●	●	Yes	Yes	Yes	Yes
Presence sensor - the screen lights-up when passing-by or approaching the thermostat	●	●	Yes	Yes	Yes	Yes
Amazon Echo, Google Home Assistant	●	●	Yes	Yes	Yes	Yes
Multi-zone control***	●	●	Yes	No	No	Yes

* with outdoor sensor installed (all Baxi Mago versions) or with cloud-based outdoor sensor (only R-BUS version)

** according to the boiler

*** Baxi Mago can control zone valves in On/Off mode when using multiple thermostats together

For the latest list of countries with internet-supported outdoor temperature sensors and information on it, please visit www.international.baxi.it

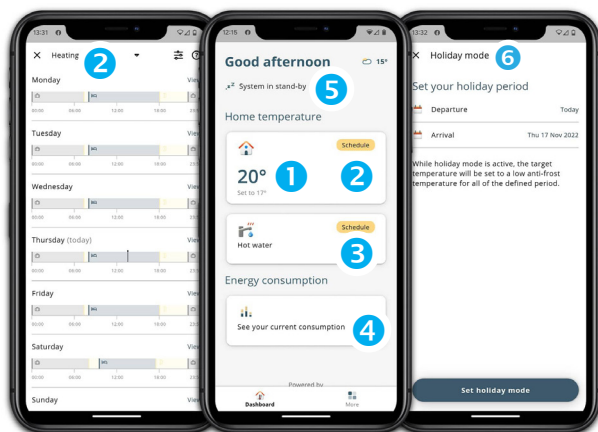
Main functions



Works without batteries
(power supply comes from the 2 wires)

- 1) Room temperature
- 2) Control mode icon
- 3) Target temperature
- 4) Menu / confirmation
- 5) Back / home
- 6) Selection knob and parameters setting
- 7) Custom view: date / hour / function outdoor temperature (with outdoor sensor)

Complete control at fingertips. Anywhere, anytime



My Baxi can be downloaded from Google Play and Apple Store



- 1) Room temperature
 - 2) Temperature setting
 - 3) Hot water schedule
 - 4) Display consumption
 - 5) System status
 - 6) Set holiday mode
- More:
- control mode
 - alerts
 - information
 - user account

Voice assistant

Baxi Mago works with Google Home and Amazon Echo voice assistants.

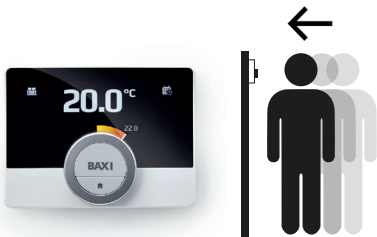


"...what is the room temperature?"



Presence sensor

The display will light up (for 5 seconds) if the presence sensor detects a person is in front of the thermostat or pass by, this allow to save also on energy consumption.



Multi-zone

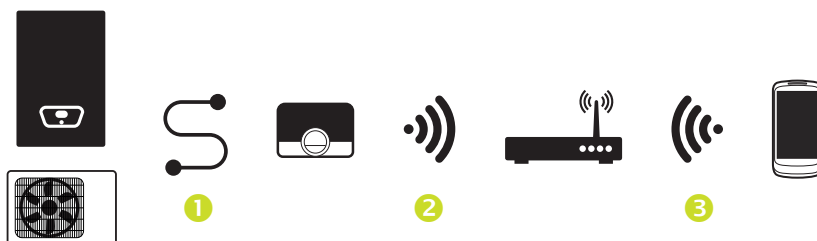
Baxi Mago supports multi-zone systems, controlling zone valves in On/Off mode when using multiple thermostats together.



Installation scheme

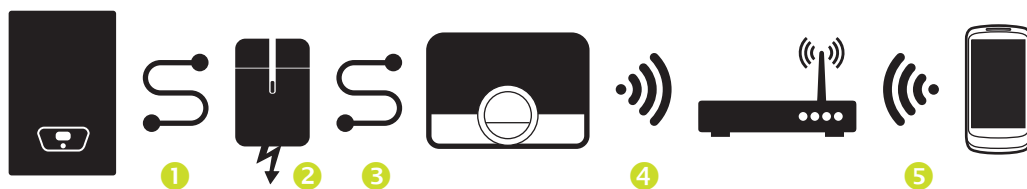
Baxi Mago (R-Bus)

- 1) Connection to Baxi Mago (R-Bus; 2 wires, preferably shielded)
- 2) WI-FI connection
- 3) Remote control via smart device



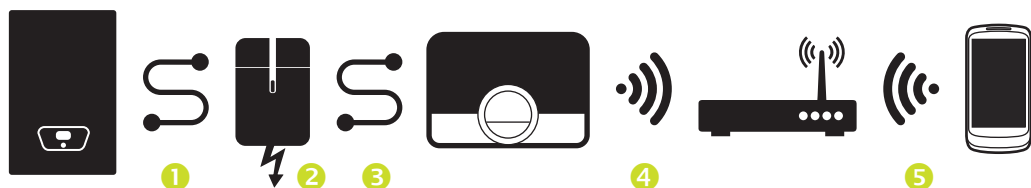
Baxi Mago + GTW16 (OpenTherm or On/Off)

- 1) Connection to adapter kit (OpenTherm or On/Off) - For the port, refer to the manual of the boiler
- 2) Gateway & power adapter kit (GTW16) powered by main with 24V transformer
- 3) Connection to Baxi Mago (R-Bus; 2 wires, preferably shielded)
- 4) WI-FI connection
- 5) Remote control via smart device



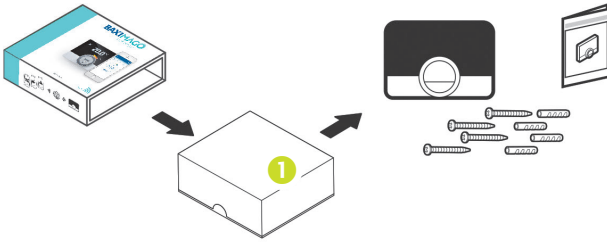
Baxi Mago + GTW17 (BSB)

- 1) Connection to adapter kit (BSB) - For the port, refer to the manual of the boiler
- 2) Gateway & power adapter kit (GTW17) powered by main with 24V transformer
- 3) Connection to Baxi Mago (R-Bus; 2 wires, preferably shielded)
- 4) WI-FI connection
- 5) Remote control via smart device



In the box

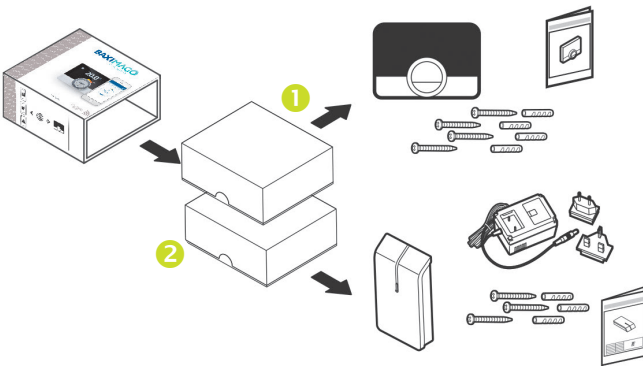
Baxi Mago (R-BUS) R-BUS 



Room unit package:

- Baxi Mago
- Mounting bracket
- Screw and plug fixings
- User guide

Baxi Mago + GTW 16 (OpenTherm) OPENTHERM ON/OFF 



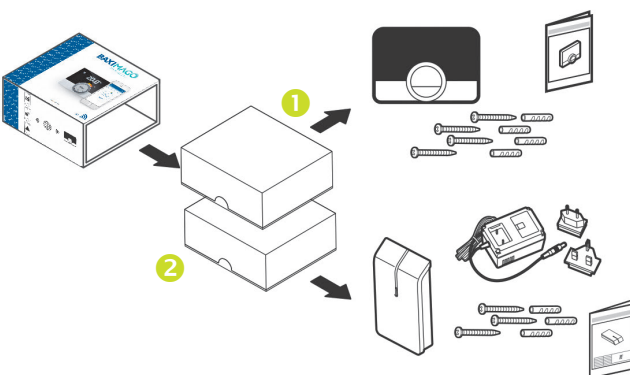
1- Room unit package:

- Baxi Mago
- Mounting bracket
- Screw and plug fixings
- User guide

2- Gateway package:

- Gateway & power adapter kit (GTW)
- Screw and plug fixings
- Installation guide

Baxi Mago + GTW 17 (BSB) BSB 



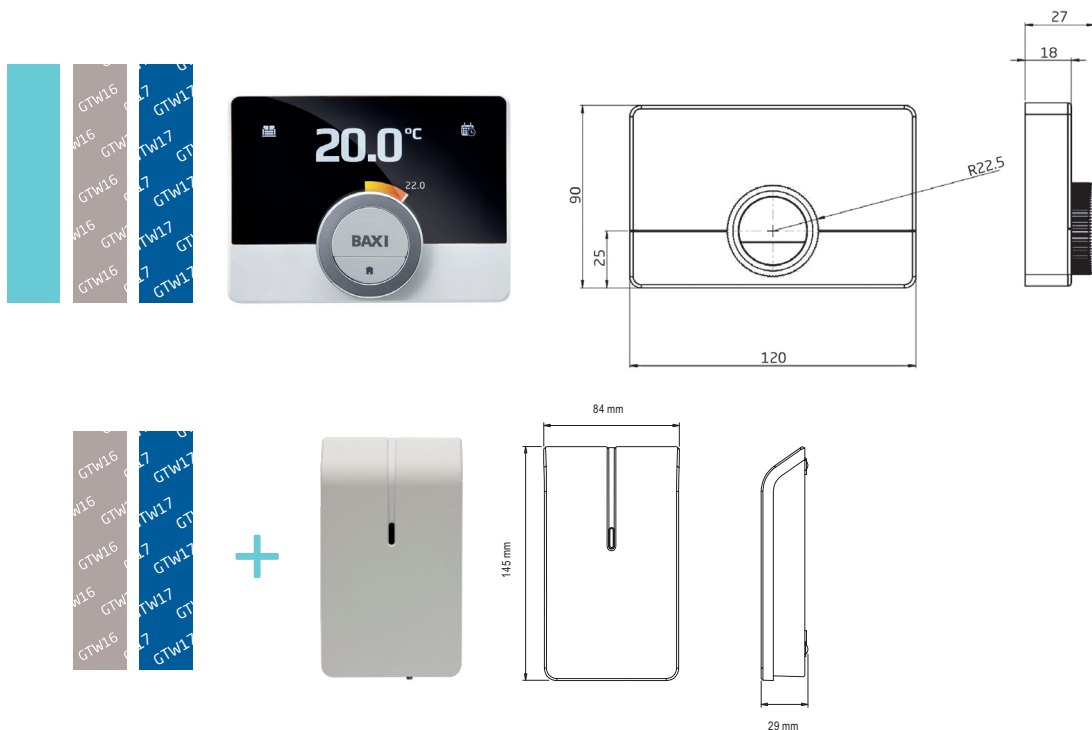
1- Room unit package:

- Baxi Mago
- Mounting bracket
- Screw and plug fixings
- User guide

2- Gateway package:

- Gateway & power adapter kit (GTW)
- Screw and plug fixings
- Installation guide

Dimensions and specifications



Technical data

	R-BUS	OpenTherm	BSB
Dimensions			
Width x height x depth (Baxi Mago)	120 x 90 x 27 mm	120 x 90 x 27 mm	120 x 90 x 27 mm
Width x height x depth (Gateway)	-	84 x 145 x 29 mm	84 x 145 x 29 mm
Electrical power supply			
Bus connection voltage		24 V ± 5%	
Maximum electrical consumption		1,5 W	
Electrical connection			
Maximum cable length for dedicated Baxi Mago bus		50 m	
Maximum cable resistance		2 x 5 ohm	
Wi-Fi connection			
2,4 Ghz band (802.11 b/g /n)	●	●	●
Ambient conditions			
Operating conditions		from 0 °C to 60 °C	
Temperature			
Measurable room temperature range		from 5 °C to 60 °C	
Maximum temperature deviation at 20°C		0,3 °C	
Maximum room control overshoot after pre-heating		1 °C	
Temperature variation		+/- 0,5 °C	
Temperature control range		from 10 °C to 30 °C	

Improve the system energy efficiency

Controls are defined using 'classes', which run from Class I (a simple on/off room stat) through to Class VIII (multi-sensor room control for use with modulating heating appliances). Each control class equates to a certain percentage uplift in the seasonal space heating energy efficiency.

Baxi Mago meets the criteria of the following temperature control classes under the ErP Directive:

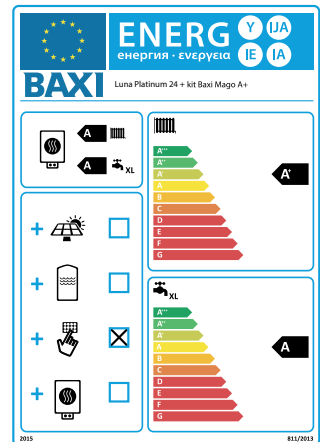
Baxi Mago				
System		Baxi Mago with on/off appliances	Baxi Mago with modulating appliances	Baxi Mago with modulating appliances + outdoor sensor (all Baxi Mago versions) or with cloud-based outdoor sensor (only R-BUS version)
Class		IV	V	VI
Contribution to the energy efficiency of space heating	%	2	3	4

The Baxi modulating condensing boilers have a seasonal space heating energy efficiency up to 94%. Under the ErP Directive, **combining our appliance with a seasonal space heating energy efficiency of 94% with a modulating room sensor like Baxi Mago, and a weather compensation sensor (physical or cloud-based) increases efficiency by 4%, bringing the total space heating efficiency of the system to 98%.**

This equates to an **A+ energy rating** and makes one of the most efficient boiler and controls combinations available. on the market.



OR



For the latest list of countries with internet-supported outdoor temperature sensors and information on it, please visit www.international.baxi.it

BAXISPA

36061 BASSANO DEL GRAPPA (VI)
Via Trozzetti, 20
export@baxi.it
www.baxi.it



The Company assumes no responsibility for any possible contents mistakes, and reserves the right to make changes in products, due to technical or commercial demands, at any time without notice.

Baxi S.p.A. 07-24 a