

# BAXI

## INTEGRATED SOLUTIONS

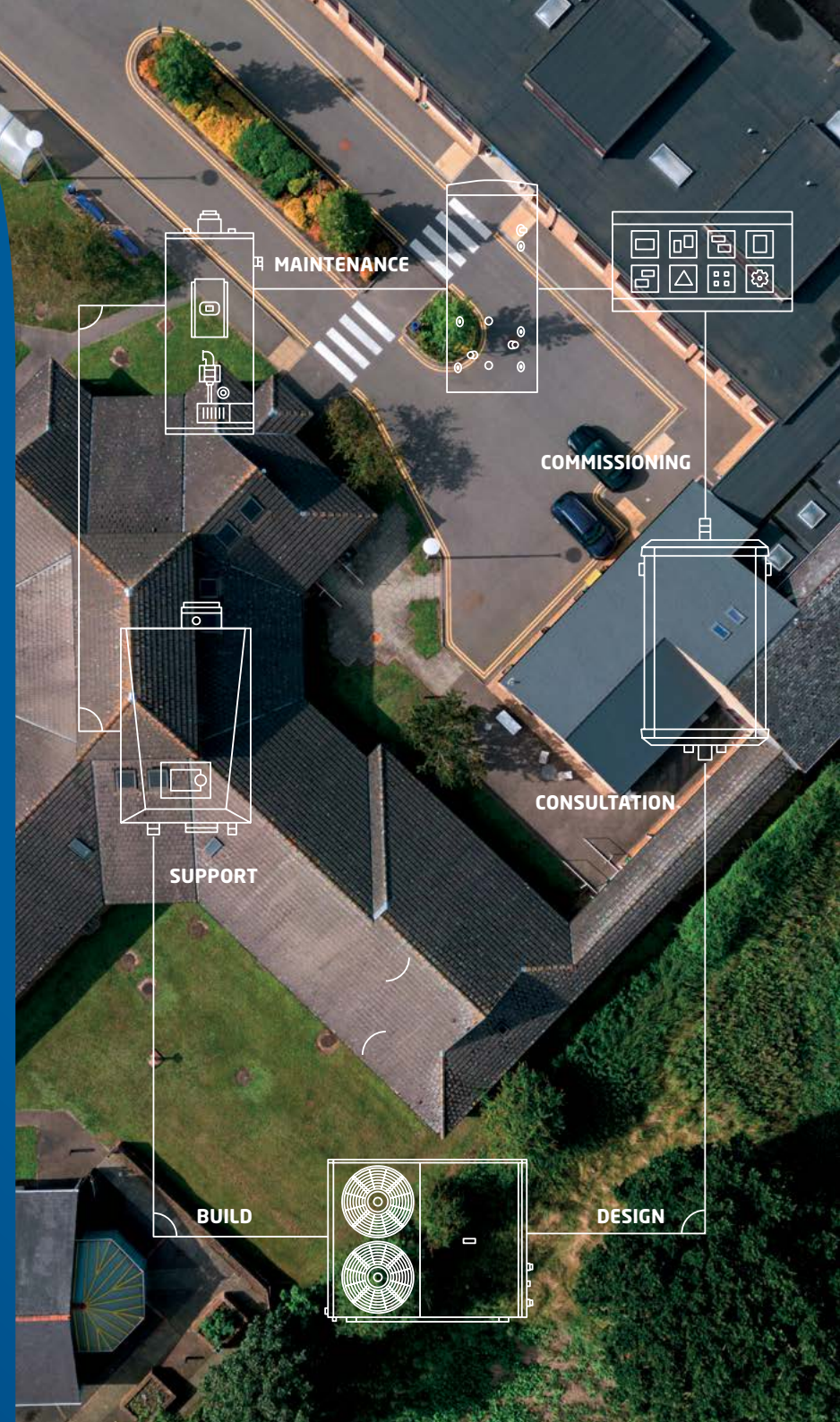
**BAXI**

**remeha**

**ANDREWS**  
WATER HEATERS

**HEATRAESADIA**

Commercial heating  
and hot water solutions





# BAXI HELPS

Our portfolio includes some of the best-known and most-respected brands in the industry.

### World-class expertise

We're home to more than 1,100 employees across the UK and Ireland, with a collective knowledge and experience that's literally centuries in the making. We work with all kinds of organisations, listening carefully to, and understanding, their needs and challenges. Together with specifiers, contractors, wholesalers and commercial end-users, we put in place the most suitable products from our vast portfolio, to make sure we deliver the right solution, every time.

### Planning cost-efficiencies

If you engage with us early, we can use our extensive technical knowledge and capability to deliver the most appropriate solution for your project. We'll work with you from design to installation, aftersales support and training.

### Broadest product portfolio

We're perfectly placed with our portfolio of brands to provide fully integrated solutions for any heating and hot water requirement. Each and every product is cleverly designed and engineered to ensure easy installation and maintenance. They all meet or exceed the UK and Ireland Government commitments, and legislative requirements to reduce carbon emissions. With more acquisitions across the BDR Thermea Group such as Hitecsa, Fortes Energy Systems and a stake in GI Holdings, our portfolio will continue to grow to meet the ever changing demands of heating and cooling commercial buildings.

### Contents

Our solutions	4
Decarbonisation	8
Superior service and expert support	10
Baxi heat pumps	12
Baxi Auriga and Auriga+	14
Reversible heat pumps	16
Booster water-to-water heat pumps	18
Simultaneous heating and cooling	19
Baxi thermal stores	20
Controls	22
Completing our systems	23
Heat generators	24
Water heaters	25
Gas boilers	26
Heat networks	28
Heat interface units	30
Thermal substations	32
Packaged solutions	34
Packaged energy centres	36
All in one solutions	38
Mountable solutions	40
Packaged plant equipment	42
Residential solutions	44
Training	46





# HOW CAN WE SUPPORT?



## Healthcare and Care Homes

Heating and hot water are critical in healthcare. Downtime isn't an option, and decarbonisation targets are pressing. Our sector team understands the balance between reliability, compliance and sustainability. We support Green Plans and CQC requirements with future-ready systems, hybrid solutions and full lifecycle support.



## Education

Schools, colleges and universities need dependable, efficient heating and hot water with minimal disruption to learning. We help plan around term times, deliver modular and packaged plantrooms to cut installation time, and provide long-term service support that keeps costs predictable and systems running smoothly.



## Commercial Buildings

From offices to leisure facilities, energy efficiency, comfort and carbon reduction are top priorities. Our commercial team tailors solutions using boilers, heat pumps, thermal stores and controls, ensuring your system is efficient, compliant and easy to manage. With remote monitoring and responsive support, you're always in control.



## Residential and Multi-Occupancy

For apartments, PBSA and mixed-use developments, residents expect reliable hot water and low running costs. We provide scalable solutions such as HIUs with the Mercurius platform, utility cupboards and WholeHouse systems, all factory-tested for quality and designed to integrate with low-carbon heat sources.

## Smarter solutions, built around your needs

### System performance and integration

- Smartly integrated, high-performance systems tailored to your building's needs.

### Energy efficiency

- High-efficiency systems that drive down carbon and operating costs.

### Space constraints

- Compact solutions that fit tight spaces without compromising performance.

### High Capex / investment

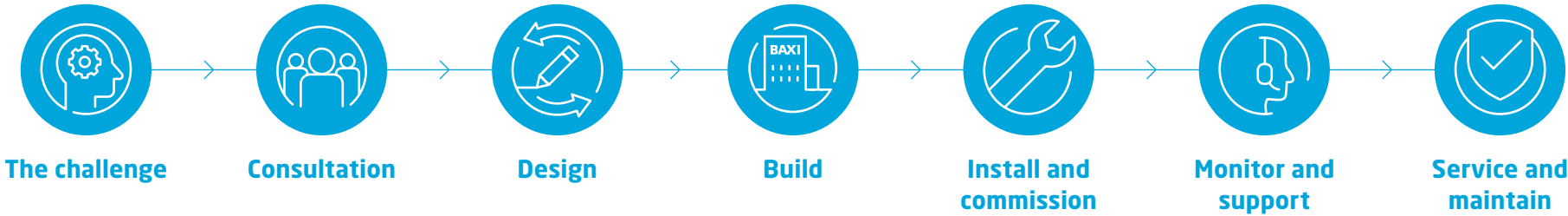
- Flexible, scalable systems to suit your budget and long-term goals.

### Minimal downtime

- Fast installation and responsive support to keep your project on track.



# OUR SOLUTIONS OFFERING



## Expert guidance from start to finish

Our specialist teams offer tailored advice based on deep product, technical, and legislative knowledge, ensuring solutions are bespoke to each project's needs.

## Efficient high-performance design

We help optimise system design to maximise product efficiency without unnecessary complexity, saving time and costs through holistic planning.

## Advanced manufacturing and delivery

Our Preston-based facility supports projects of any scale across the UK and Ireland, using modern construction methods to reduce time, cost, waste, and improve quality and safety.

## Comprehensive support and maintenance

From fast, tested installations and remote monitoring to bespoke training, commissioning, and long-term servicing with genuine spare parts, we ensure smooth operation and lasting reliability





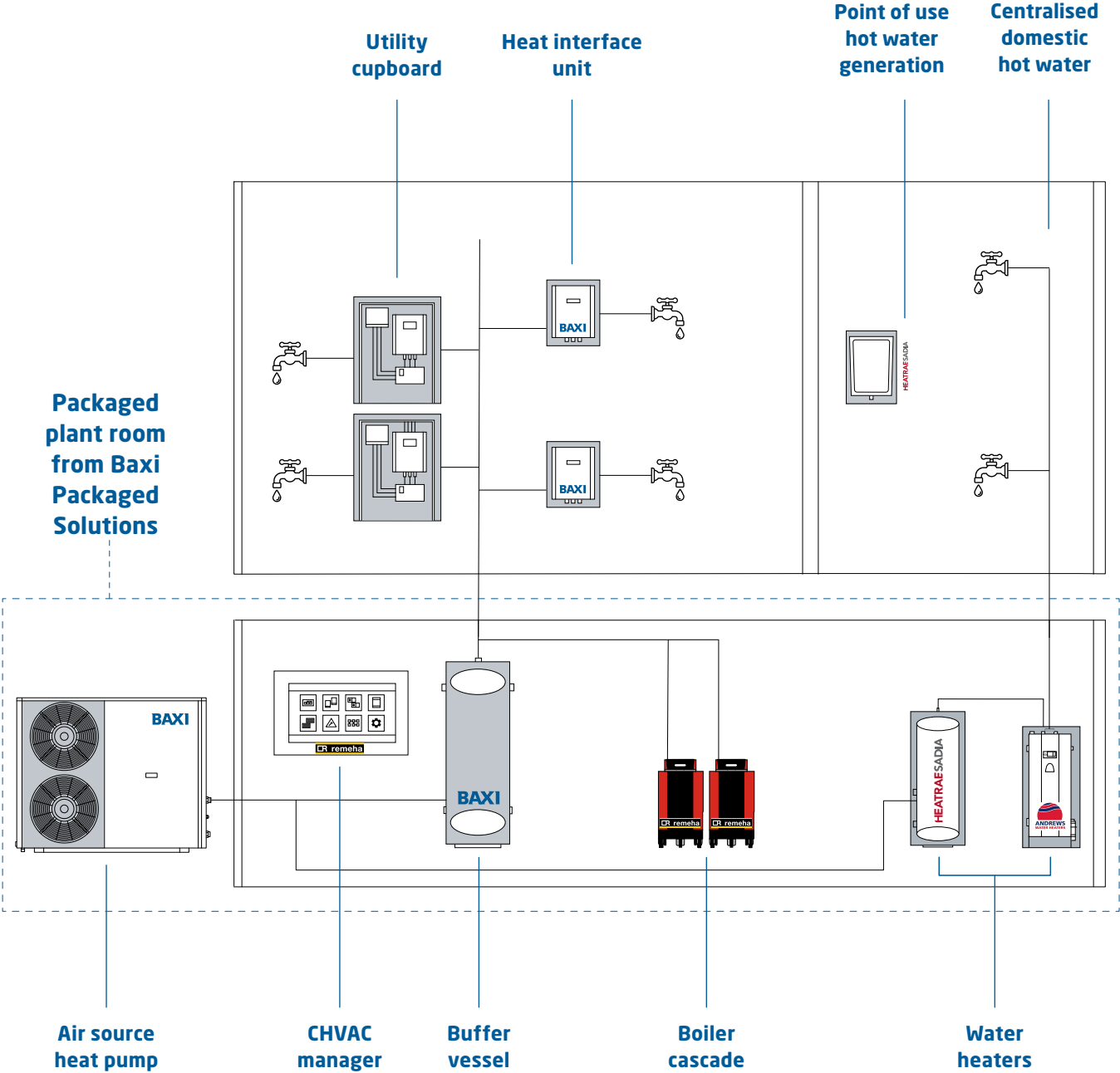


# DECARBONISING EXISTING BUILDINGS

## Hybrid solutions

While there is no silver bullet to heating buildings more sustainably, as responsible manufacturers we are responding with the necessary products, techniques and product development that will support the required mix of solutions and approaches.

We're on hand to help clients set their own pathway to decarbonisation. Taking action now is imperative. By working together and taking a holistic approach to heat, one that supports best practice at all times, we can help clients achieve their sustainability goals.





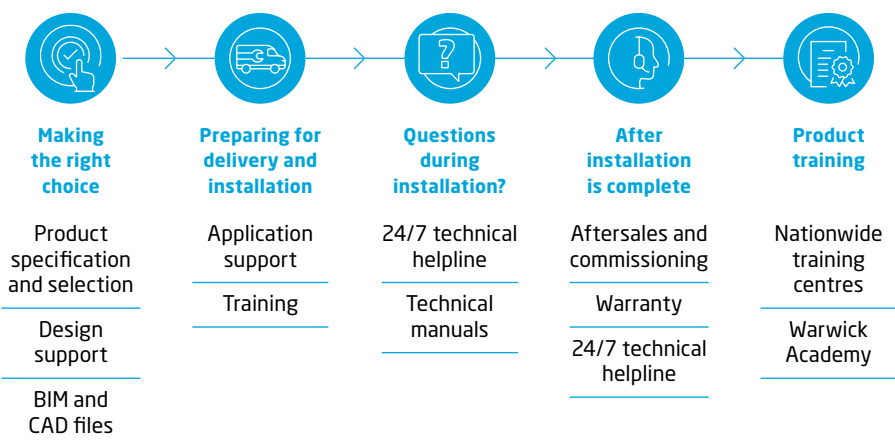
# SUPERIOR SERVICE AND EXPERT SUPPORT

We put all our energy into delivering not only the very best products, but also excellent customer service.

Our expert sales teams are on hand to support you at every stage of the project – from specification to installation and technical backup. They can help with plant room design, free site surveys, sizing, technical advice and much more. With our high-performance, complementary products and our wide range of accessories, we can help you add the finishing touches to any project. For expert technical advice and support, day or night: **0330 678 0140**

And for everything else, our extensive online resources provide a wealth of information and guidance, 24/7: **[baxi.co.uk/knowledge](https://baxi.co.uk/knowledge)**

## Expert help and advice all the way



# ON HAND SUPPORT

## From feasibility to commissioning

### Site surveys

- Deep understanding of client and site needs
- Assess visual and noise impacts
- Face-to-face approach mitigating future issues

### System design

- Performance graphs and project specific system simulations
- Equipment and plantroom layouts – internal and external 3D design
- Pipe and equipment sizing + pressure drop calculations

### Controls and electronics

- Tailored controls schematics – showing system integration and wiring
- Manage integration to BMS
- Full electrical schematics to assist with DNO applications

## Through the project and on-site system assurance

### Project engineering

- Project management support from conception to handover
- One point of contact throughout the project
- Site surveys, kick-off meetings, progress meetings, installation and pre-commissioning support

### System commissioning

- Expert support – dedicated engineers with expert system knowledge
- Ensure optimal performance – validation that design and product specifications are met
- On-site training / support and enhanced warranty

## Through your system lifecycle

### Technical support

- 24/7 support across all products
- Installation and servicing support
- Fault finding and remote triage
- Technical information and data

### Servicing

- On-site servicing – ad-hoc or annual service
- In and out of warranty products
- Minimise downtime with scheduled support

### Warranty, spares and repairs

- Network of 270 engineers in UK
- Parts and labour warranty up to 7 years on all commercial appliances
- Nationwide spares stock



# BAXI HEAT PUMPS

High-performance ASHP solutions for every building. Whether you're working on a retrofit, new build or hybrid system, Baxi's large output air source heat pumps deliver flexible, low-carbon heating and hot water without compromise.

**Our portfolio includes:**

- Mid and high temp ASHPs
- Booster water-to-water heat pumps (up to 80°C output)
- 4-pipe multifunctional units – heating, cooling and hot water from one system
- Pre-configured hybrid-ready systems available on request

**Features and benefits:**



Efficient by design – seasonal efficiencies optimised with inverter scroll compressors and EC fans



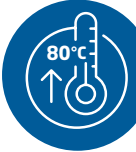
Silenced options available on specific models – choose from standard, silenced, or super-silenced units



Low GWP refrigerants – R32, R290, R452B, R454B and R513A options to support your net zero goals



Compact and scalable – modular flexibility from 20kW to 724kW across various models



Hot water up to 80°C – perfect for commercial DHW and space heating demands








## BAXI AURIGA

Mid-Temperature Air To Water Heat Pump, perfect for commercial applications in both fully-electric and hybrid heating systems.

Built from over 30 years' experience in air to water heat pumps and low-carbon heating systems across Europe, Baxi's Auriga HP Heat Pump is a monobloc design, self-contained heat generator, extracting renewable heat from the atmosphere and amplifying it using R32 refrigerant compression.

Available in four outputs, from 20 to 40kW, Baxi Auriga HP Heat Pumps can be used as part of a hybrid or standalone system in both new build and retrofit applications.


 **R32**  
675 GWP

## BAXI AURIGA+

High-Temperature Air to Water Heat Pump, using R290 low GWP natural refrigerant to provide high temperature outputs at low ambient temperatures. Perfect for ultra-efficient commercial heating in both fully-electric and hybrid heating systems.

Baxi's Auriga+ HP ASHP is a monobloc design, self-contained heat generator, extracting renewable heat from the atmosphere and amplifying it using R290 refrigerant compression.

Available in two outputs of 20kW, and 30kW Baxi Auriga+ HP ASHPs can be used as part of a hybrid or standalone system in both new build and retrofit applications. With operating temperatures up to 80°C, the Baxi Auriga+ is also perfect for domestic hot water production.

 **R290**  
3 GWP

Features and benefits of Baxi Auriga and Auriga+ include:



**Inverter driven scroll compressor** - modulates from 13% to 100% for greater matching of output to system load



**BMS connectivity through Bacnet, Modbus or using a 0-10V signal** - full remote monitoring and optimised system performance



**High seasonal operating efficiency**  
Auriga - SCOP of up to 4.83  
Auriga+ - SCOP of up to 5.17



**Compatible with cascade or hybrid system controls** - allows control of multiple heat generating technologies



**<65 dBA (noise pressure at 5m is <43 dBA)** - reduced noise operation, perfectly suited to built-up areas



**Coastal protection models available**







# REVERSIBLE HEAT PUMPS

## Mid Temperature

Air-cooled reversible heat pumps for mid temperature heating, cooling and domestic hot water – delivering comfort, efficiency and flexibility for a wide range of applications.

- The highest efficiency
- Low GWP refrigerant R452B
- Low GWP refrigerant R454B
- Inverter: Part load efficiency
  - Scroll compressors
  - EC Fans/ EC Fans with high available static pressure and efficiency
  - Pumpsets
- Microchannel condensing coils
- Free-cooling technology
- Hot water up to 55°C

 **R452B: The low GWP substitute for R410A**  
 -65% GWP:  
 R410A: 1924 GWP  
 R452B: 676 GWP

 **R454B**  
 -31% GWP:  
 R452B: 676 GWP  
 R454B: 467 GWP

## High Temperature

Air cooled dedicated heat pumps for high temperature hot water production for heating, cooling and domestic hot water.

- Thanks to its design and technology, the range has a high efficiency both at full load (COP up to 4.28) and with partial loads (SCOP MT up to 3.15/ SCOP LT up to 3.90)
- Low GWP ecological refrigerants
- Wide operating field: up to -20°C outdoor temperature
- Hot water up to 65°C
- Domestic hot water production and hybrid systems management
- Standard and silenced versions available
- Quick plug and play installation with on board hydraulic options

 **R454C: The replacement for high temperature with low GWP of R410A and R407C**

- -92% GWP:  
 R410A: 1924 GWP  
 R454C: 146 GWP
- -91% GWP:  
 R407C: 1620 GWP  
 R454C: 146 GWP

## Features and benefits of mid and high temperature reversible heat pumps include:



Low GWP  
**(Mid temperature)**  
 Low GWP ecological refrigerants **(High temperature)**



Hot water up to 55°C  
**(Mid temperature)**  
 Hot water up to 65°C  
**(High temperature)**



High-efficiency



Wide operating field  
**(High temperature only)**



Microchannel condensing coils  
**(Mid temperature only)**



Quick plug and play installation **(High temperature only)**



Free-cooling technology  
**(Mid temperature only)**





## BOOSTER WATER-TO-WATER HEAT PUMPS

Water-cooled heat pumps for very high temperature hot water production. Standard and silenced versions available.

### Benefits include:

- High energy efficiency
- Compact solution
- Hot water up to 80°C
- Domestic hot water management
- Standard and silenced versions available
- Quick plug and play installation and system production optimisation
- Low GWP refrigerant R513A



### R513A: The low GWP substitute for R134a

- -56% GWP:  
R134a: 1300 GWP  
R513A: 573 GWP

## SIMULTANEOUS HEATING AND COOLING

Air-cooled reversible heat pumps designed to deliver simultaneous heating and cooling – ideal for buildings with year-round, multi-zone comfort demands.

### Benefits include:

- Low GWP refrigerant R452B
- Low GWP Refrigerant R454B
- Low GWP refrigerant R513A available with screw inverter compressors for excellent part load efficiency



### Low GWP refrigerants

- Scroll compressors:  
R452B: 676 GWP  
R454B: 467 GWP  
Alternative to R410A (GWP 1.924)

- EC fans
- Internal pumpsets on hot and cold sides
- Hot water up to 55°C
- Standard, silenced and super silenced versions available
- 4-pipes systems
- More compact system, easier installation





## BAXI THERMAL STORES

In commercial buildings where heat demand fluctuates, thermal stores are essential for system stability and long-term performance.

### Why pair a thermal store with a Baxi heat pump?

- Reduces cycling and wear on heat pumps
- Stores heat when demand is low, releases when needed
- Supports hybrid configurations with boilers or multiple heat sources
- Sizes from 750L to 5000L – fully compatible with ASHPs

### All stores feature:

- Up to 8 flow/return connections
- Optional diffuser pipe for stratification
- 5 sensor pockets for detailed control
- 2-year warranty as standard

### Trusted by professionals across sectors

#### We've supported clients across:

- Healthcare (NHS and private)
- Education
- Mixed-use commercial sites
- Multi-residential housing
- Leisure and hospitality

Whatever your project, our sector-specific teams and local support network are here to make it happen—efficiently, reliably, and sustainably.





## INTELLIGENT CONTROLS FOR SMARTER SYSTEMS

Our commercial controls bring every element of your heating and hot water system together - heat pumps, thermal stores, boilers, and beyond.

With tailored schematics, seamless BMS integration, and full electrical support, we make complex systems simple to manage. The result is smarter energy use, easier commissioning, and peace of mind that performance is always optimised. Whether you're monitoring efficiency, setting system priorities, or planning maintenance, Baxi controls give you total visibility and confidence in your installation.

## COMPLETING OUR SYSTEMS

High-performance, complementary products and a wide range of accessories and supporting information add the finishing touches.

### Cascade kits

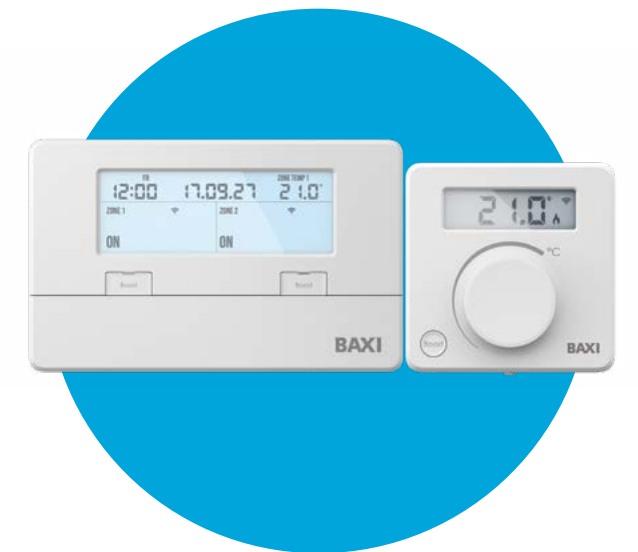
We offer a range of standard or bespoke cascade kits for both floor-standing and wall-hung arrangements. Depending on the project's requirements, they arrive complete with a floor-mounted frame, fully-insulated hydraulic pipework, low loss headers or plate heat exchangers.

### Accessories

A full range of accessories is available to complement our equipment.

#### Accessories include:

- Controls
- Flue kits
- Plate heat exchangers
- Buffer vessels
- Low loss headers
- Pressurisation units
- Condensate treatment







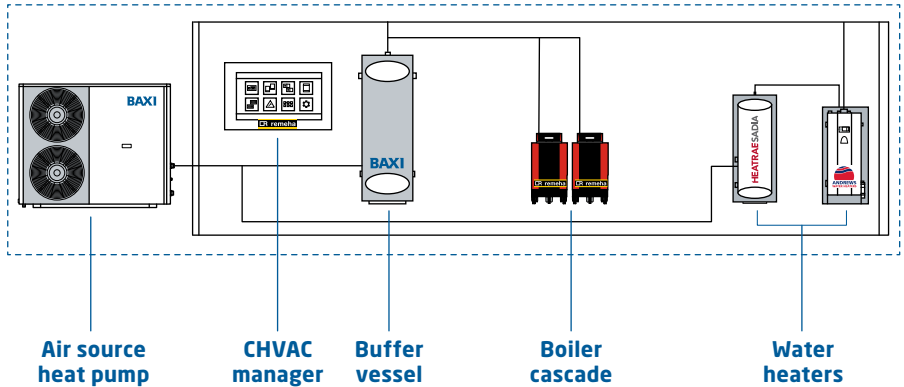
# RELIABLE COMMERCIAL HEAT GENERATORS

Baxi’s range of commercial heat generators provides the dependable backbone for projects of every scale. From compact wall-hung boilers to powerful floor-standing models, our solutions deliver outputs up to multi-megawatt cascades, ensuring consistent performance even in the most demanding environments. Designed with efficiency, serviceability and long-life in mind, they are the ideal partner for hybrid systems, supporting heat pumps and thermal stores to balance peak loads and provide built-in resilience. With flexible configurations and proven technology, our heat generators give consultants, contractors and building owners total confidence in their system’s reliability today and into the future.

## All electric and hybrid solutions

We offer a complete range of solutions, including wall-hung and floor-standing boilers with cascade configurations up to 5MW. Air source heat pumps (ASHP) for single dwellings, multi-occupancy, and light commercial applications such as hotels, educational institutions, and care homes. Combined heat and power (CHP) systems, cylinders to complement low-carbon plant rooms, and hybrid and cascade controllers designed to maximise performance and efficiency.

### Packaged plant room from Baxi Packaged Solutions



# GAS FIRED WATER HEATERS

Our water heaters guarantee a reliable supply of hot water and will stand up to even the most demanding of requirements. We’re focused on innovation, and continually evolve our products to ensure optimum performance, high recovery rates and low running costs, not to mention energy efficiency and legislative compliance.



# POINT OF USE WATER HEATERS

For areas where hot water is needed quickly and efficiently, Baxi’s Point of Use (POU) water heaters provide the perfect solution. Compact, easy to install, and highly efficient, they deliver instant hot water exactly where it’s required—removing the need for long pipe runs or centralised storage. Available in a range of capacities and formats, POU heaters are ideal for offices, retail spaces, healthcare settings, and other commercial applications where reliability and convenience are essential.



## COMMERCIAL GAS BOILERS

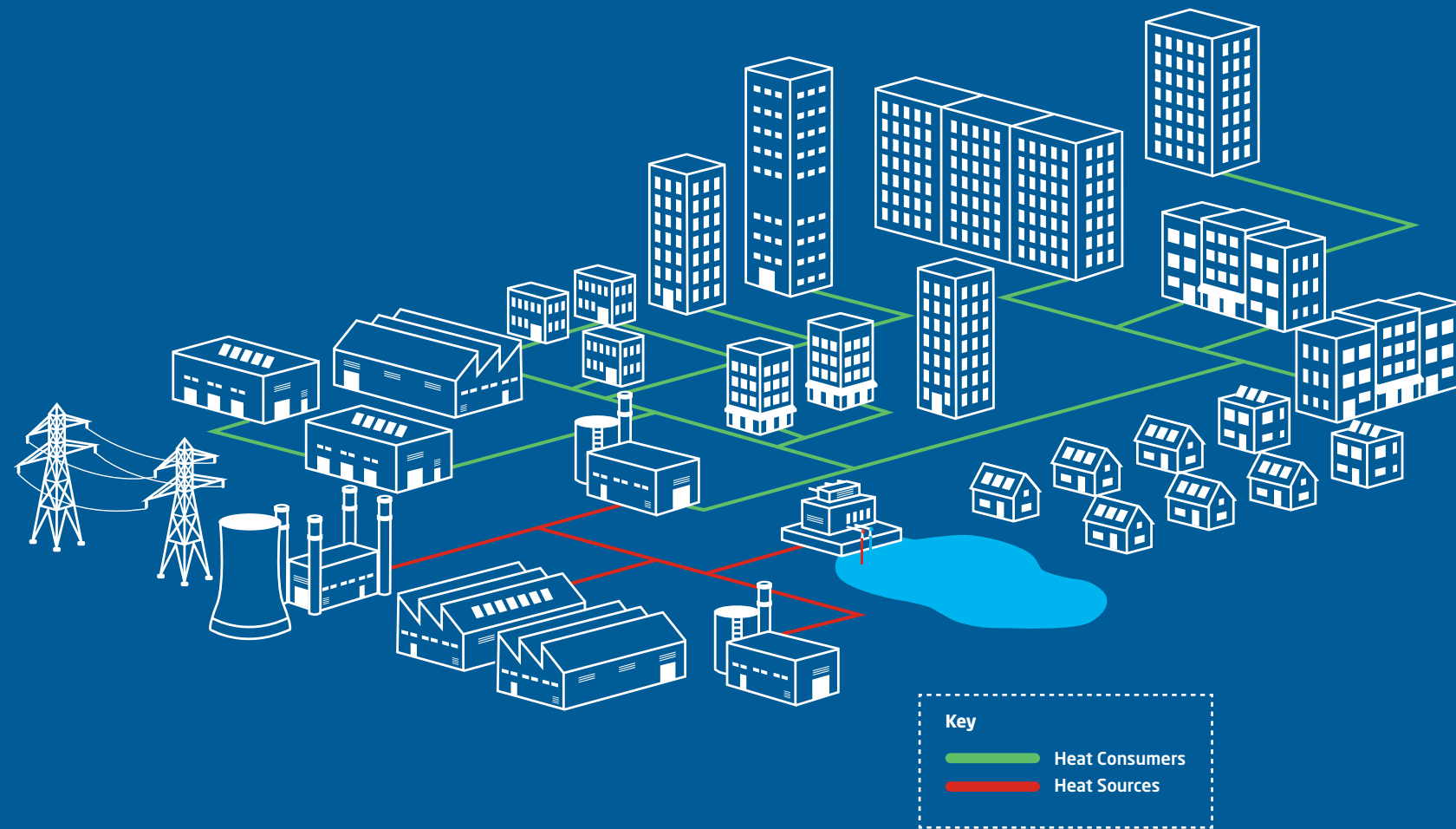
Baxi's commercial gas boilers are built on proven technology, delivering dependable heating performance at scale. With outputs from 30kW right through to cascades of over 1MW, they're suited to everything from small plant rooms to complex, multi-building developments.

Compact, easy to install and simple to maintain, our boilers combine high-efficiencies with robust design to keep projects running reliably and cost-effectively. They also integrate seamlessly with low-carbon technologies such as heat pumps and thermal stores, making them a flexible choice for hybrid systems where resilience and load balancing are key.

Backed by our nationwide network of engineers and long-life spare parts support, Baxi commercial gas boilers give you complete confidence in performance today – while helping you transition towards tomorrow's decarbonised energy mix.







## HEAT NETWORKS

Heat networks are vital to making net zero a reality in the UK and Ireland. In high density urban areas, they are often the lowest cost, low-carbon heating option.

With legislative changes in the pipeline the government is working with industry and local authorities and investing over half a billion pounds in funds and programmes, to develop new heat networks and improve existing ones.

As demand grows, we're firmly at the forefront. Our skilled team is able to provide design support, manufacture and supply fully tested energy centres, thermal substations and prefabricated utility cupboards with heat interface units as well as remote monitoring and servicing to provide an end-to-end solution for your heat network.

### Benefits of our heat network solutions include:



Optimum performance and efficiency

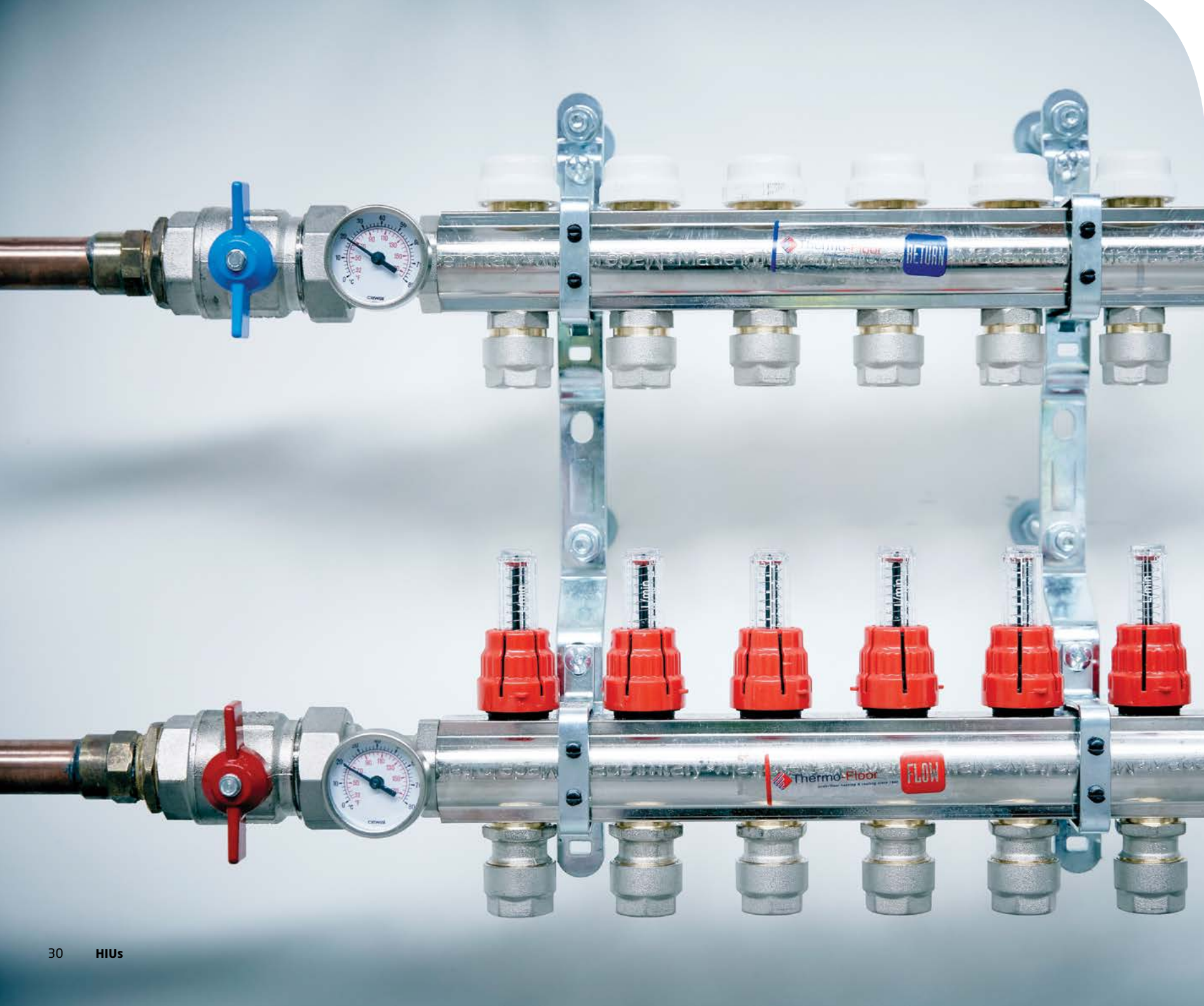


Flexible configurations to suit any property



Centralised plant from one supplier which can be prefabricated to reduce material waste, installation time and cost





# HEAT INTERFACE UNITS (HIU)

## Instantaneous Hydraulic Interface Units

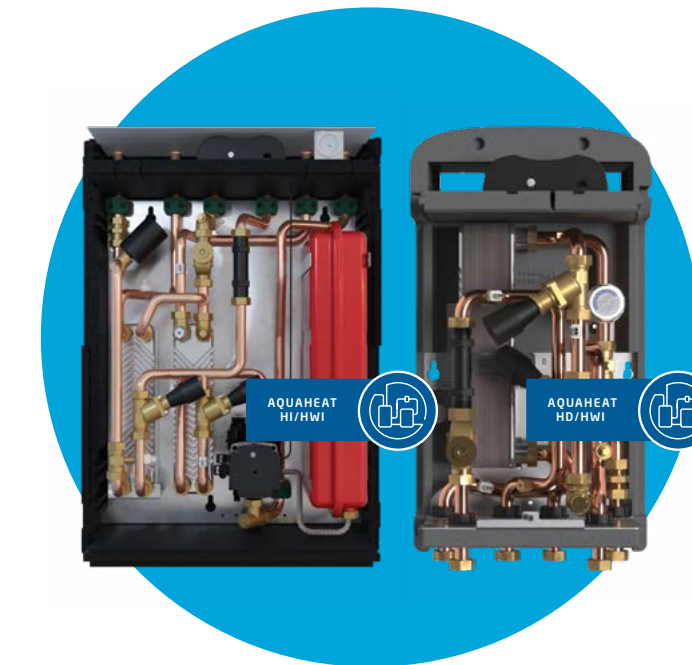
For homes fed with heat from a heat network, the Baxi AquaHeat HI / HWI (Heating Indirect / Hot Water Indirect) is the answer to your apartments' heating and hot water requirements, and the Baxi AquaHeat HI (Heating Indirect) is perfectly suited to supply heat to communal and commercial premises in your development.

## The Mercurius advantage



At the heart of our HIU offer is the Mercurius platform, a connected solution that provides advanced monitoring and control. With optional remote diagnostics, energy metering, and system performance tracking, Mercurius ensures operators have complete visibility and control over every unit. This means faster fault resolution, optimised efficiency, and greater confidence that residents and tenants are receiving the comfort they expect.

Together, Baxi HIUs and the Mercurius platform give you a smarter, more manageable approach to heating and hot water distribution, simplifying operation while supporting your decarbonisation goals.



## Baxi AquaHeat HI / HWI



Flexible outputs up to 57kW DHW and 14kW space heating



Remote monitoring and control through Mercurius platform



5 years parts and labour warranty\*



Option for built-in heat meter

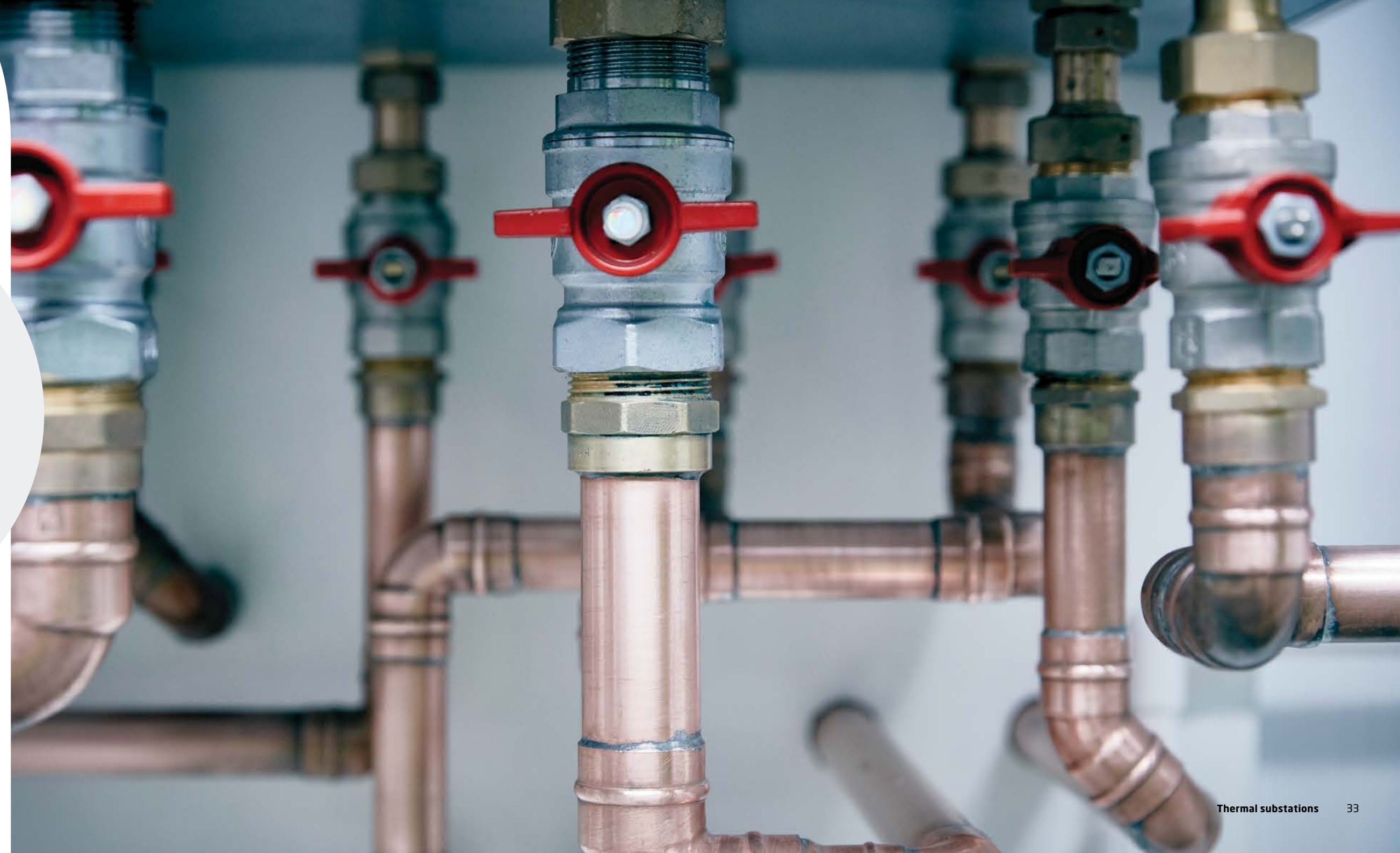
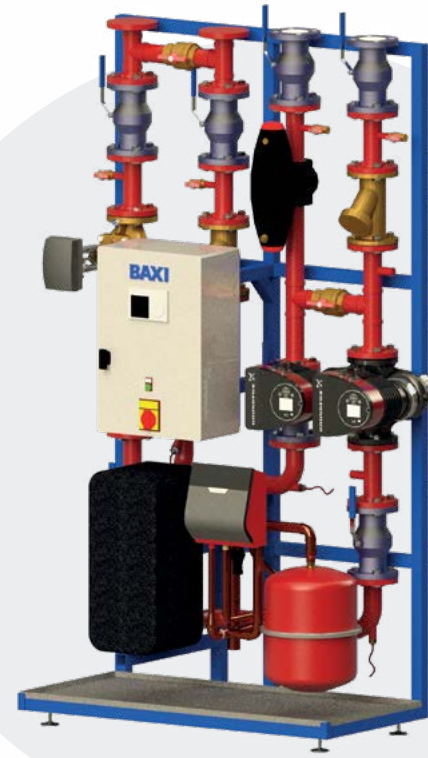
\* Warranty subject to our commissioning.



## THERMAL SUBSTATIONS

By utilising the technology from Fortes who are market leaders in The Netherlands we can provide heat units and large prefabricated delivery stations for hot and cold distribution systems.

In a capacity range from 20kW to 5MW, for commercial, residential, utility and industrial projects.





# BAXI PACKAGED SOLUTIONS

Smarter, faster, and more flexible – packaged solutions that simplify specification, installation, and operation.

## Complete solutions, ready to go

Baxi Packaged Solutions bring together our proven technologies in pre-assembled, factory tested units. Designed to reduce on-site time, improve quality, and cut disruption, they deliver all the benefits of our heating and hot water expertise in one easy-to-install package.

- Factory-built and tested – reliable quality control before delivery
- Plug and play installation – quicker, safer, and more predictable project delivery
- Compact and scalable – tailored to fit projects of any size
- Hybrid-ready – compatible with heat pumps, boilers, HIUs, and storage

## Utility cupboard solutions

Compact by design, our utility cupboard packages are purpose-built for apartments, PBSA (purpose-built student accommodation), and small-scale residential projects. Fully pre-fitted with HIUs, controls, pipework, and accessories, they save space and ensure a neat, professional finish.

### Benefits at a glance:

- Slimline design for small footprints

- Reduced on-site labour with pre-installed components
- Fully integrated HIUs with monitoring and billing options
- Consistent quality across multiple units

## WholeHouse solutions

For larger residential or mixed-use buildings, WholeHouse packaged plantrooms offer a complete, scalable system for heating and hot water. These fully integrated, modular units arrive pre-assembled and ready to connect, providing resilience and efficiency for complex projects.

### Benefits at a glance:

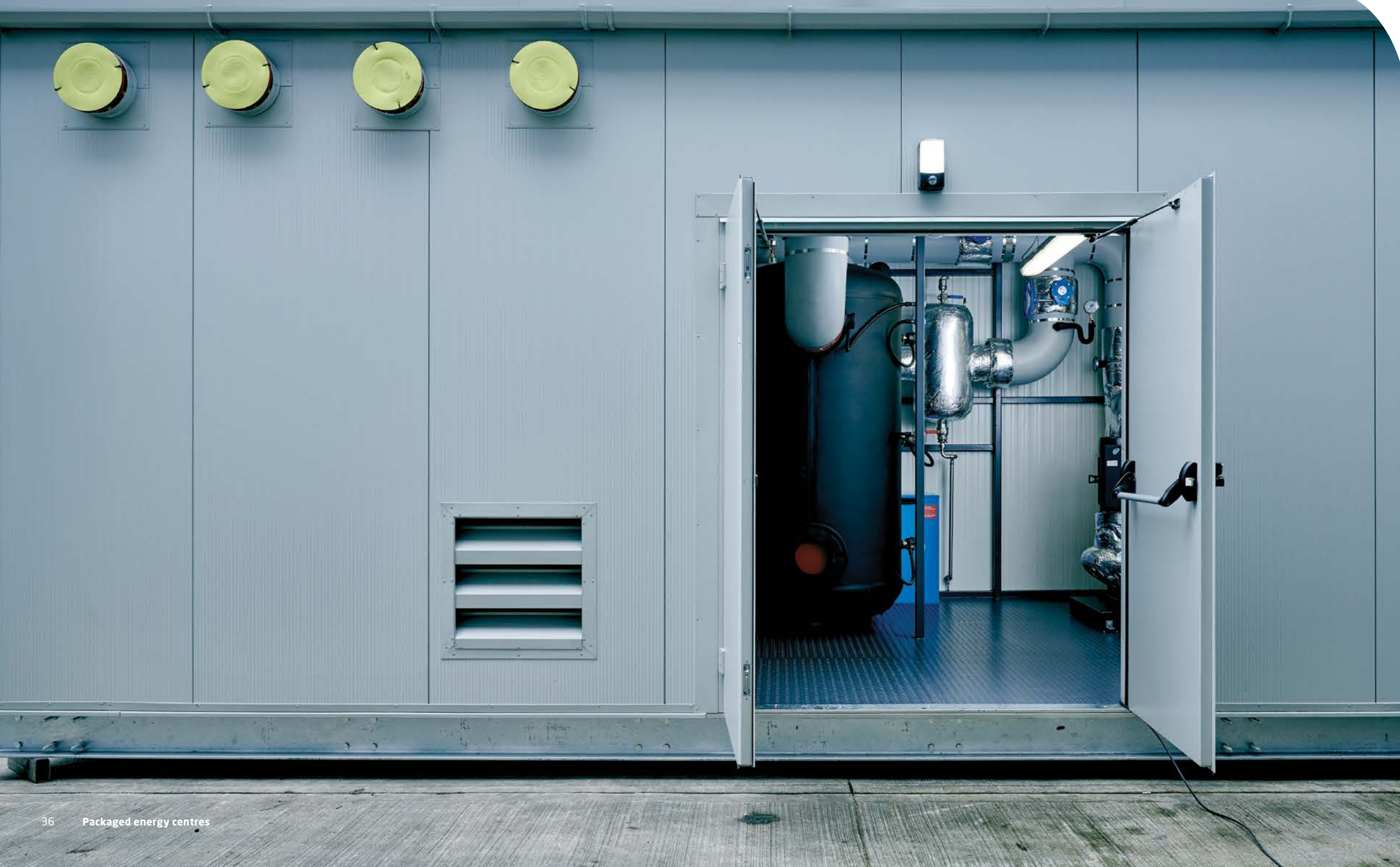
- Delivers heating and hot water to the entire building
- Configurable with boilers, heat pumps, thermal stores and controls
- Optimised layout for easier installation and servicing
- Flexible sizing to suit project demands

## One partner, one solution

With Packaged Solutions, you get more than just equipment. You get Baxi's expertise – from design support and factory build, through to installation, commissioning, and lifetime maintenance. One supplier, one point of contact, and one less thing to worry about.







## PACKAGED ENERGY CENTRES

Our energy centres combine a mix of low-carbon technologies to generate and supply efficient, environmentally-friendly heating and hot water to multi-occupancy sites.

Our bespoke installations can be sited externally to the main building, in rooftop schemes or an internal centralised plant room – whatever works best in maximising performance, efficiency and cost-effectiveness.

They remove the need for individual heating products in each separate dwelling, providing sustainable heating and hot water from a single source and creating a heat network. We also provide a range of skid solutions for base applications to connect heat network systems.

At our state-of-the-art facility in Preston, we design and build prefabricated energy centres to match your specific requirements and in line with the latest legislation. Then, we deliver them either in sections or as a single lift, depending on the project. Either way, you can be sure of a configuration that's safe, quick and easy to install.



# ALL-IN-ONE SOLUTIONS FOR PLANT ROOMS

Modular Turnkey Solutions (Pre-assembled Reach-in Plant Rooms).

- High quality turnkey solutions modular solutions
- Reduction of downtime of existing plant
- Reduction of on-site labour time and cost; remove skilled labour bottlenecks
- Quality assured – factory tested systems
- Single point of contact – complete transparency of system design and components

## Features and benefits



Scalable - modularised solutions from 100kW



Convenient - quick to install, easy to service and maintain (end-to-end solution)



Designed to suit your needs - hybrids, gas boilers, all-electric – you decide!



Ease of use - advanced control system



Phased decarbonisation ready - supports a stepped approach to decarbonisation



Support (technical and funding) - design service, financing and monitoring available



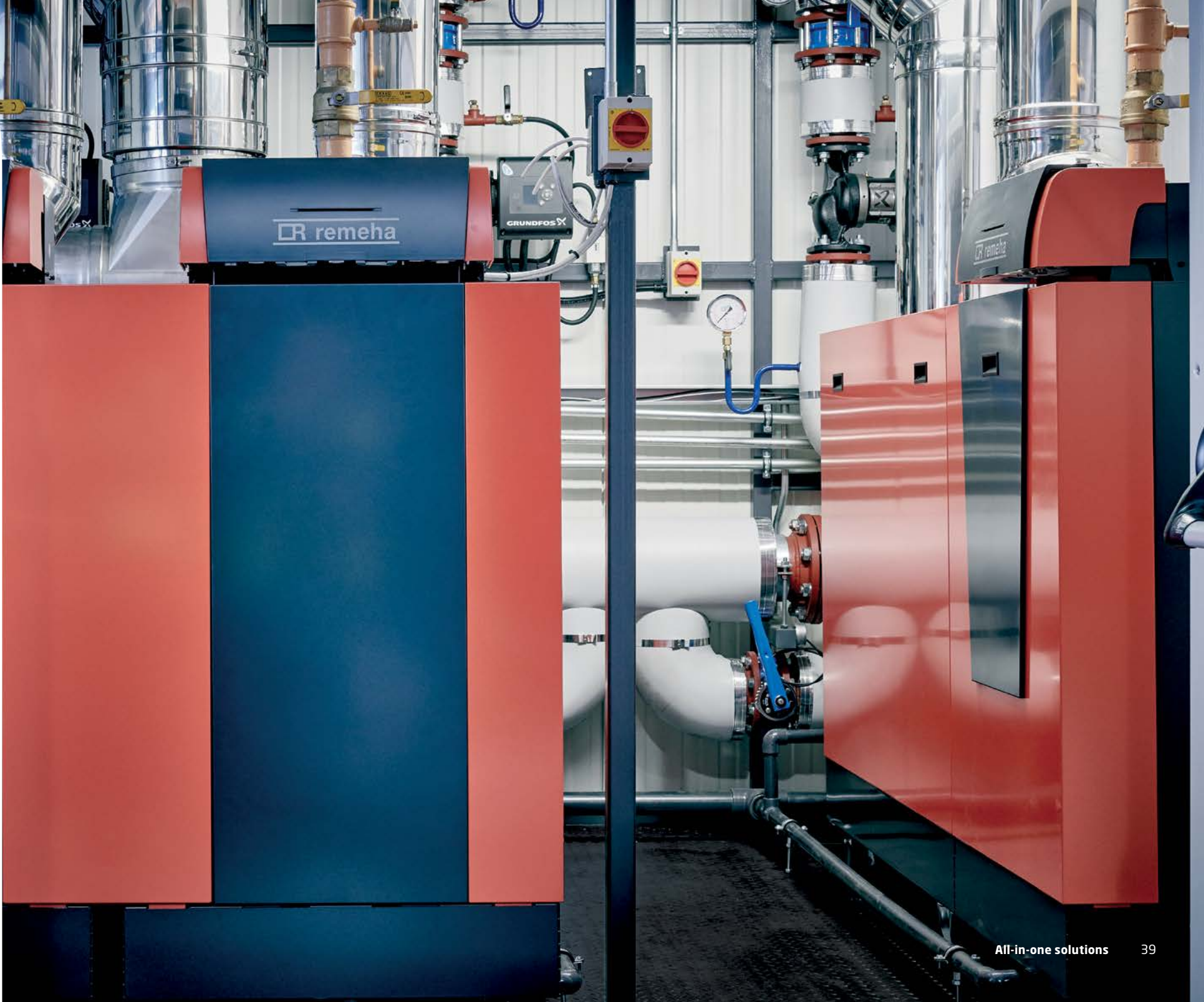
Flexible Solutions - containerised solutions or plant room sub-assemblies



Peace of mind - backed with a 7-year warranty (only on the boilers)



Reliable performance - factory tested and fully optimised





# MOUNTABLE SOLUTIONS - SKIDS / RIGS

Skids are like plant rooms, having all the equipment without the walls.

- These are popular for multi-occupancy buildings, where they can be installed in a pre-existing plant room or bolted on to the installed systems
- Modular process skid packages can provide a wealth of benefits to ensure that your project is delivered to time and quality. Our modular skids can replace part of a system that is obsolete or be designed to fulfil new build requirements
- Existing operations can continue as we ensure that the modular skid is designed and built off-site in optimal factory conditions
- We will deliver it to your site where utilities and piping can be connected (plug and play)

## Features and benefits



Time-saving - faster project completion by off-site construction of modules



Reduced waste  
reduced labour and material wastage



Portable - off-site fabricated skids are designed for portability, facilitating optimal transportation



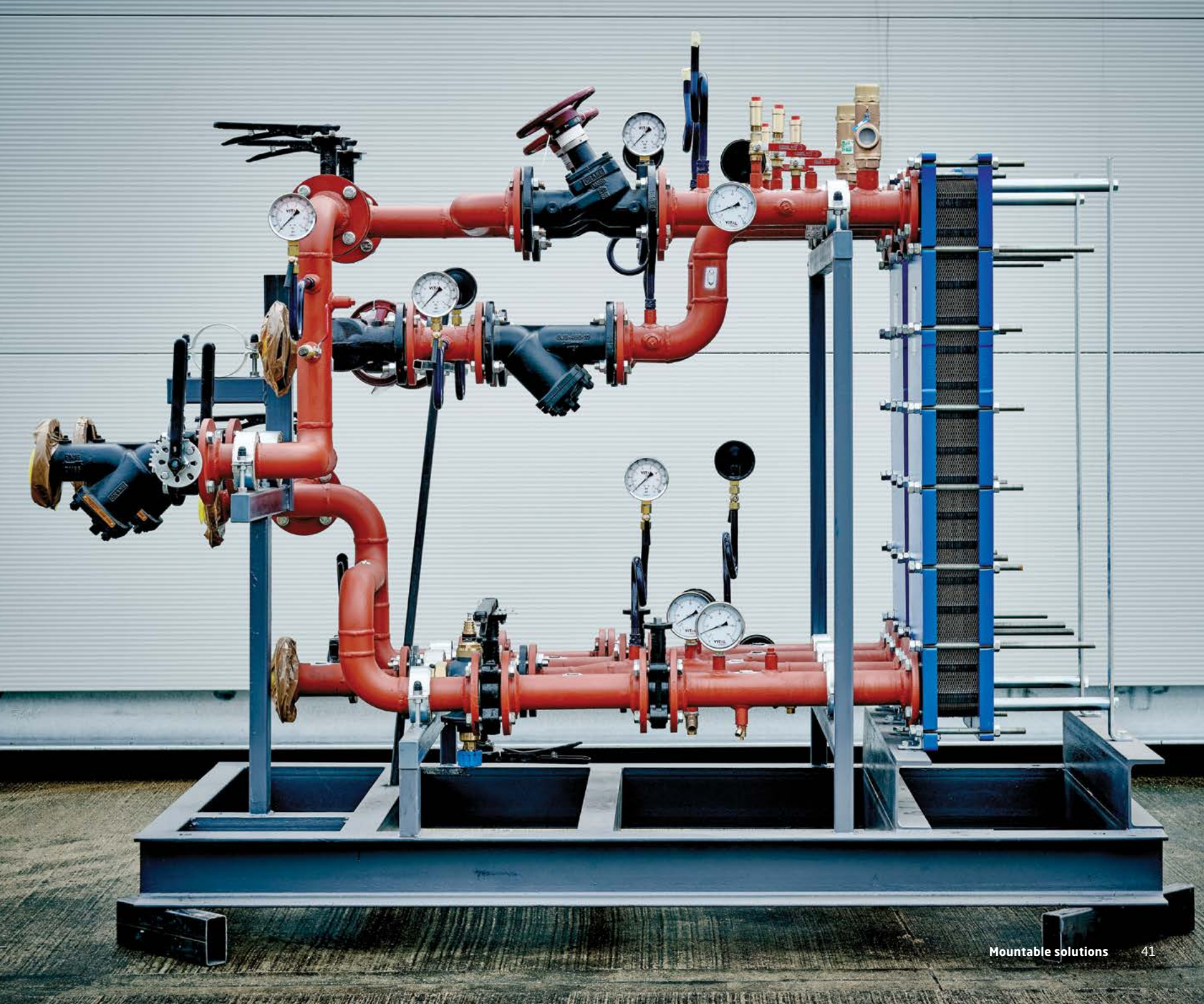
Safe - reduced safety issues through controlled off-site build and installation



Space-saving - lower space requirements through optimised design and reduced footprint



Can be floor or wall-mounted





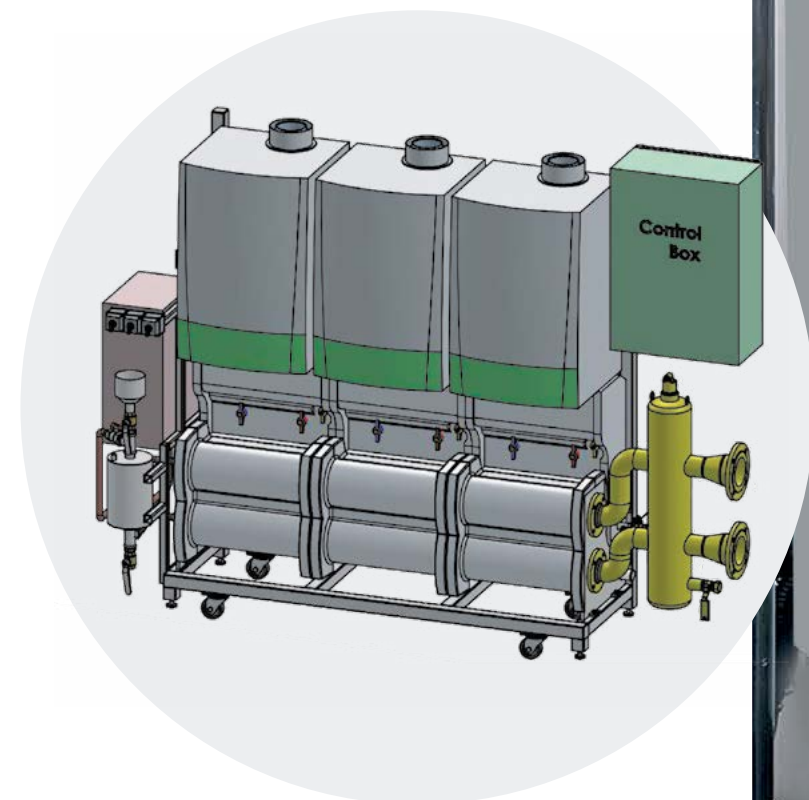
# PACKAGED PLANT EQUIPMENT

## Boiler rig systems

Our multiple boiler rig systems are designed for wall-hung models like the Quinta Ace and the Sirius three WH, offering greater design flexibility and reliability for large commercial and light industrial applications.

Modular configurations enable more accurate matching of the heat output, for improved efficiency and greater cost savings.

Available in-line or back-to-back, our bespoke rigs can be configured to accommodate any space and access limitations. They arrive on-site in a pre-tested, pre-assembled wheeled unit, improving quality control whilst reducing downtime and on-site labour.





# RESIDENTIAL SOLUTIONS

We're at the forefront of the residential and commercial energy transition, guiding social housing and new build housing providers towards achieving net-zero carbon emissions in line with UK Government targets.

Ours is a multi-strand, phased approach, combining our complete range of heating and hot water solutions with expert advice, to ensure a smooth, cost-effective route to the decarbonisation of housing stock.



For any residential needs please visit:  
**[baxi.co.uk/specification](https://baxi.co.uk/specification)**

With our in-depth knowledge of the building industry and a track record of heating and hot water innovation dating back to 1866, we're perfectly placed to deliver the reliable, efficient heating and hot water solutionsour building partners need – for today, and tomorrow. Whether you require something for a semi-detached new build home or a multi-occupancy apartment building, Baxi have got you covered with our wide product portfolio. From air source heat pumps, to heat interface units, gas boilers or cylinders.

Rest assured, your project's heating and hot water systems are in safe hands with us.



For more information on the Baxi Assure HP55 ASHP please visit:  
**[baxi.co.uk/baxiassureHP55](https://baxi.co.uk/baxiassureHP55)**





## TRAINING

We've set up dedicated training academies across the country, to enable our customers to refine their skills and gain practical experience in a real-world environment.

It's complete training, geared towards developing all-round knowledge in heating and hot water, for everyone.

All product training is free and course content is tailored to the specific needs of the audience. For example, sessions for contractors will be more hands-on and cover practical tips about installation, commissioning and maintenance. We also offer CIBSE-approved CPD courses, and bespoke training for distributors which focuses on identifying the correct appliance for their customers' requirements.

We can also accommodate specific training requirements and work with you to develop a program, please speak to your National Sales Manager for more information.



## GET IN TOUCH



### **UK**

0345 070 1055  
baxi.co.uk



### **IRELAND**

00353(0) 1 4590870  
baxi.ie

Information correct at time of print (October 2025).

### **Want the full technical picture?**

From efficiency stats to dimensions, connections, and control options, our Commercial Product Guide covers all the technical detail you need to plan with confidence.



Scan to flip through the full guide online and explore our complete range of commercial heating and hot water solutions.