

DOG GONE PRICES! A 1965 MYSTERY

Time-traveling cousins track Grandpa's dog—and some strange prices.

In Grandpa's garage...



Arrival in 1965...



Department Store...



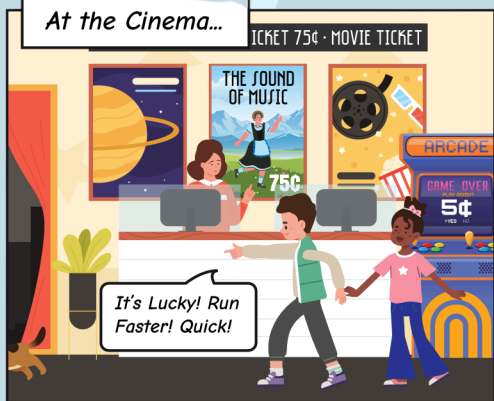
Near the Car Center...



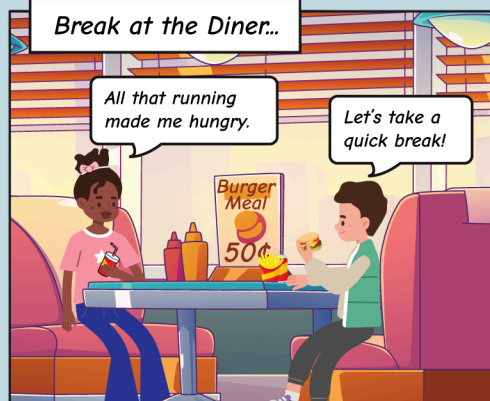
At the Gas Station...



At the Cinema...



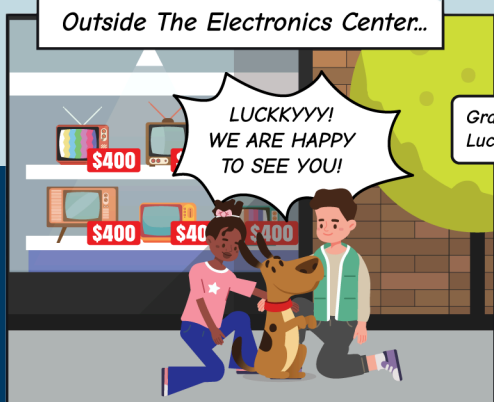
Break at the Diner...



At the Ice Cream Shop...



Outside The Electronics Center...



Back in Grandpa's garage...



Solve the puzzle to uncover the mystery of rising prices!



DECODE THE MYSTERY OF INFLATION

What Changed?

You may have noticed that prices in Grandpa's time were very different from what they are today.

But why does money buy less than it used to?

Step 1: Find the 1965 prices hidden in the comic.

Step 2: Solve the math problems using those prices.

Step 3: Use the Decoder Key to reveal the mystery message about rising prices!

Find the 1965 price in the comic and then solve the math problem to discover the mystery of rising prices.

Item	New Car	Gas (per gallon)	Comic Book	Burger Meal
Today's Price	\$38,400	\$3.80	\$3.65	\$9.60
1965 Price	-	-	-	-
Difference	=	=	=	=

Item	Ice Cream Cone	Television	Movie Ticket	Jeans
Today's Price	\$1.40	\$500	\$10.75	\$46
1965 Price	-	-	-	-
Difference	=	=	=	=

SECRET MESSAGE:

\$1.30 \$3.50 \$36,000 \$42 \$10 \$9.10 \$1.30 \$100 \$3.50

M E A N S P R I C E S R I S E O V E R T I M E

Decoder Key:

I = \$1.30

L = \$42

N = \$3.50

F = \$36,000

A = \$10

T = \$9.10

O = \$100

Bonus Fun Fact:

TVs haven't increased in price as much as other items—but that's because technology has improved so much!

You get way more features now (like streaming and smart assistants) for a similar price.