



OUR FUTURE IS BOLD.

OUR FUTURE IS BRIGHT.

OUR FUTURE IS

now.



BVHS BY THE NUMBERS



4,000
people
per day served



3,200
associates
employed



1,011
babies
delivered per year



11,437
inpatient
admissions per year



61,824
primary
care
visits per year

227,108
specialty
care
visits per year



43,800
emergency
department
visits per year

The Blanchard Valley Health System Capital Campaign

BVHS WILL AIM TO INVEST OVER \$140M IN CAPITAL PROJECTS TO CREATE BETTER HEALTH OUTCOMES FOR THOSE WHO LIVE AND WORK IN OUR COMMUNITY.

\$20M

\$140M Total Investment

Capital Campaign Target

Why Now?

Healthcare is evolving. The future of healthcare lies within and beyond traditional hospital walls. Current trends show outpatient treatment is a patient's first step on their healthcare journey and the starting point for more specialized care.

BVHS strives to stay at the forefront of healthcare by actively addressing the needs of the community such as increased demand for:

- Primary care providers*
- Cancer treatment
- Laboratory services

BVHS aims to face these opportunities by creating collaborative healthcare settings where we can generate efficiencies, simplify our footprint, and enhance our patient experience. The future of healthcare is tied to inpatient and outpatient services, and we will evolve to meet the needs of our community through.

- The Armes Family Cancer Care Center expansion
- Blanchard Valley Health System Wellness Park, a new ambulatory outpatient center
- Hospital enhancements

*Physicians, Advanced Practice Providers (APPs), etc.

Our Future Is Now



“ Blanchard Valley Health System is the champion of quality healthcare for the region. We continue to be a trusted source of healing and strength, and our best days are ahead. Together, let’s shape the future of wellness for our community. ”



Myron D. Lewis

— Myron D. Lewis, FACHE

*President & Chief Executive Officer
Blanchard Valley Health System*

TIMELINE

The renovations started in September 2023 and are expected to be completed in a phased approach.

PROJECT COSTS

AFCCC Building Renovations.....	\$3.9M
Linear Accelerator	\$5M
3D Mammography Units (2x)*	\$1M
Total Investment in Cancer Care.....	\$10.5M**

* 3D Mammography was placed in Bluffton and Ottawa, joining Findlay

** Project costs are subject to change

The Armes Family Cancer Care Center

HEALING, HOLISTIC CANCER CARE FOR A THRIVING COMMUNITY

Fighting Cancer Takes a Team

The Armes Family Cancer Care Center (AFCCC) is the premier cancer care destination in the region.

Designated as a Comprehensive Community Cancer Care Center by the American College of Surgeons (ACS), the AFCCC offers over 40 different cancer treatments close to home. The AFCCC is the present and future of BVHS cancer care.

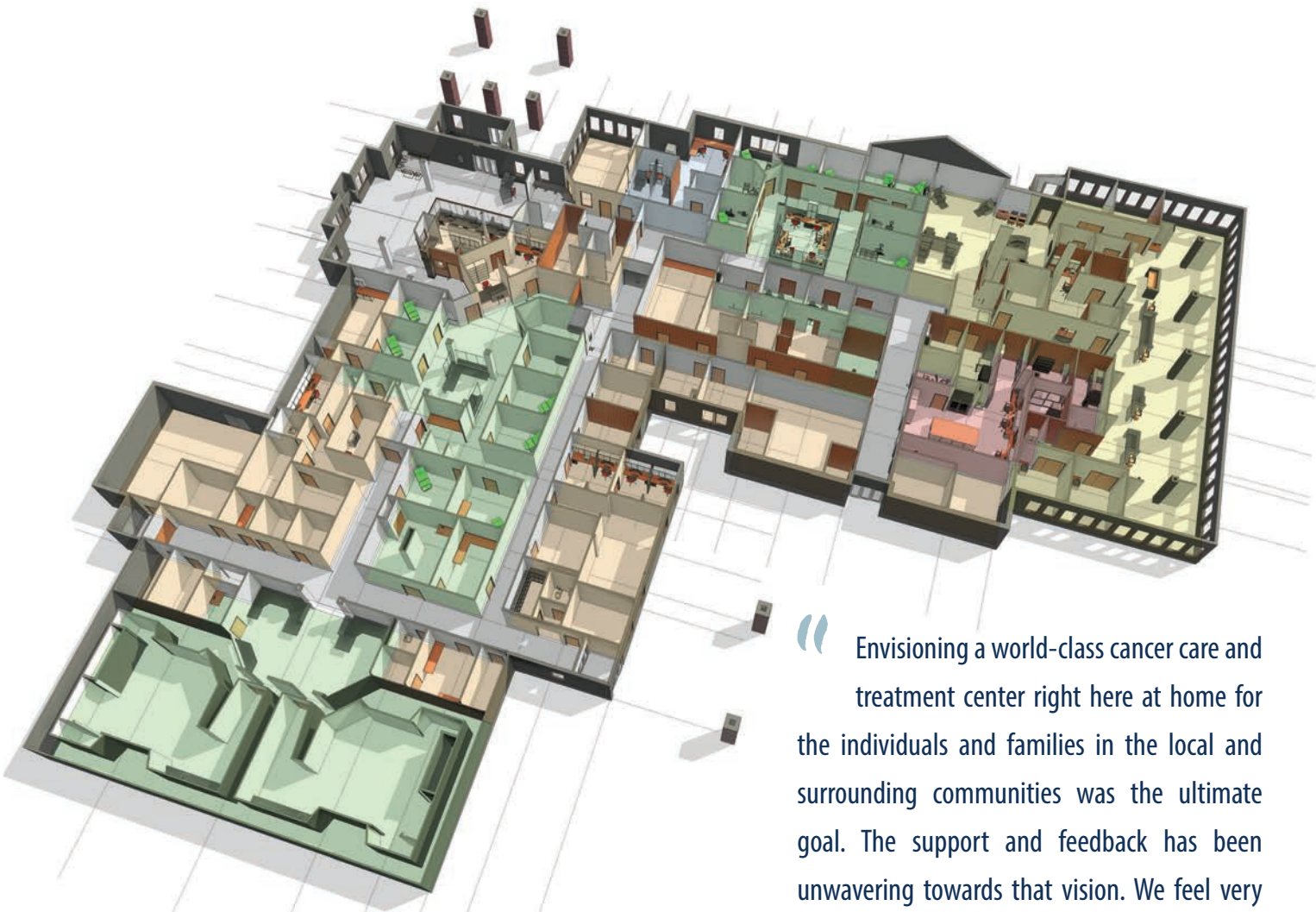
Next-Level Cancer Care

Patient volumes are expected to double to 300 patients per day. The following upgrades are necessary to create the optimal patient experience:

- Streamline check-in and improve patient privacy
- Create additional patient exam rooms and care team spaces
- Develop additional infusion space
- Expand pharmacy and laboratory spaces
- Designate specified areas for medical and radiation oncology

BVHS is investing in cutting-edge technology to:

- Focus on early detection and exceptional cancer treatment
- Deliver pinpointed radiation to specific areas of the body using an additional linear accelerator
- Improve patient outcomes with a Radiation CT Simulator
- Increased access to 3-D mammography, as the Bluffton and Ottawa communities have joined Findlay in offering this level of care



“ Envisioning a world-class cancer care and treatment center right here at home for the individuals and families in the local and surrounding communities was the ultimate goal. The support and feedback has been unwavering towards that vision. We feel very proud to be a part of that achievement. ”

— **Roy and Marcia Armes**
Lead donors for The Armes Family Cancer Care Center

TIMELINE

Construction is expected to begin in January 2024, with the two buildings projected to open in January 2025.

PROJECT COSTS

BVHS Wellness Park Building & Renovations.....	\$37.3M
Technology & Infrastructure.....	\$1.1M
Equipment.....	\$1.1M
Furnishings.....	\$590,000
Total Investment.....	\$40.1M*

BVHS is saving 60 cents on the dollar to renovate an existing facility versus new construction.

* Total investment may change due to construction costs

Blanchard Valley Health System Wellness Park

EXPANDING ACCESS TO COMPREHENSIVE CARE IN ONE DESTINATION ADJACENT TO I-75

Innovative Healthcare Complex

An in-depth market assessment determined the current and future needs of BVHS. The results showed opportunities to expand primary care, increase the BVHS service area, and create efficiencies through collaboration of complementary medical practices. This is the future of collaborative care at BVHS.

Collaborative Care

BVHS Wellness Park will enhance the patient experience by:

- Creating a 73,000 square-foot complex based on universal design principles with on-site outpatient laboratory and imaging services
- Adding a team of primary care providers to increase access to care
- Increasing patient capacity and long-term flexibility with standardization of examination room design
- Establishing a regional center for rheumatology, endocrinology, diabetes management, and research
- Addressing the healthcare needs of a growing portion of the BVHS service area



Center of Excellence for Muscular-Skeletal Health

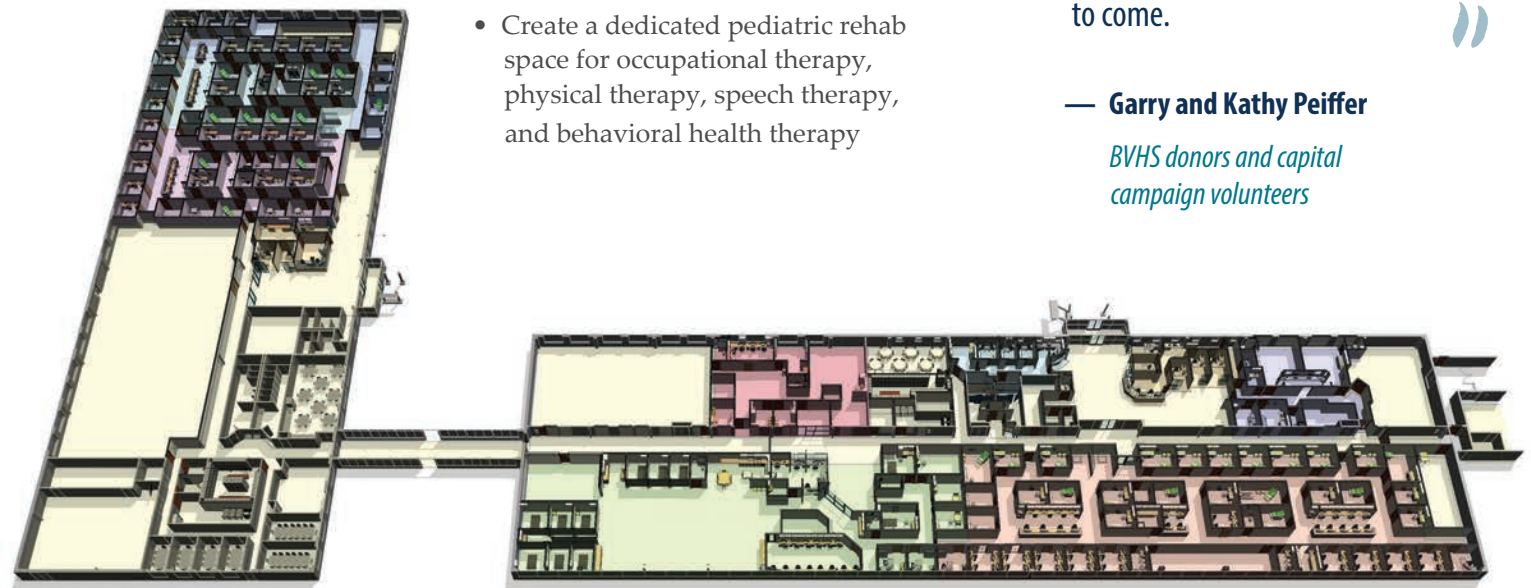
An emphasis of the BVHS outpatient strategy is the coordination of complementary services. As an example, the Muscular-Skeletal Health Center will:

- Identify root causes of aches, pains, and injuries of the bones, muscles, and joints
- Provide a single destination for orthopedic surgeons, physical medicine specialists, and adult/pediatric rehab
- Facilitate the collaboration of providers for enhanced patient outcomes
- Expand Julie A. Cole Rehab & Sports Medicine with an on-site gym area
- Create a dedicated pediatric rehab space for occupational therapy, physical therapy, speech therapy, and behavioral health therapy

“ Blanchard Valley Health System has been a critical partner in the many successes that we’ve achieved in Findlay and Hancock County for more than 100 years. Our family looks forward to helping BVHS acquire, through this capital campaign, the capabilities necessary to meet the healthcare needs of our citizens for many more years to come. ”

— Garry and Kathy Peiffer

BVHS donors and capital campaign volunteers



OUR CAMPAIGN TIMELINE

2024 - 2025

AFCCC..... \$10.5M

2025 and Beyond

Wellness Park \$40.1M

Hospital Enhancements \$91M

Hospital Enhancements

CONTINUING TO INVEST IN HOSPITAL-CENTRIC CARE

Acute Rehab Unit

BVHS has repurposed existing space in Blanchard Valley Hospital to open the first Acute Rehabilitation Unit (ARU) in Hancock County. As one of only ~1,200 ARUs in the country, this new unit provides physical, occupational, and speech therapy to patients, including those with neurological, stroke, and orthopedic conditions.

The rigorous therapy schedule helps patients return to their daily lives sooner and reduces the likelihood that they will be readmitted to the hospital. Before this 12-bed unit became available at Blanchard Valley Hospital, patients had to travel long distances to receive care away from their home community. Now, patients can simply move from the sixth to the fourth floor through a seamless transition

A Multispecialty Vision

Local community support will help BVHS lay the foundation for a longer-term vision for multispecialty space that will:

- Meet growing regional laboratory demand, decrease processing times, and deliver faster results to patients through industry-leading technology
- Continue to process over one million specimens annually with an entire floor of laboratory space, due to a 30% increase in volume since 2012
- Integrate providers that operate in the hospital, allowing quick access to operating and emergency rooms
- Improve workflow and efficiencies for critical care units with direct access to the ICU and CCU
- Care for maternity patients with close proximity to the ICU and CCU



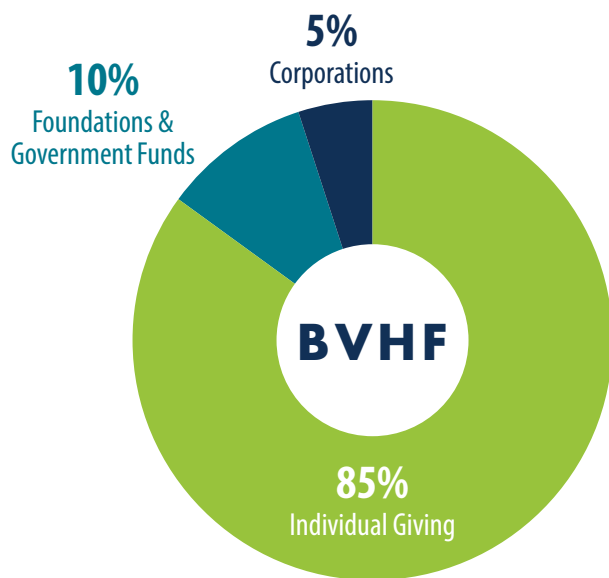
Artistic renderings that depict a longer-term vision that can become a reality through donor support.

“ Our contribution to this historic project is very personal. We are honored to be part of advancing the science and technology that will be the foundation for healing others and helping them attain a healthier life. ”

— **David and AmyLin Lai**
BVHS Laboratory donors

Blanchard Valley Health Foundation (BVHF)

aims to raise over \$20 million for BVHS capital projects



BVHS MISSION, VISION & VALUES

Our Mission

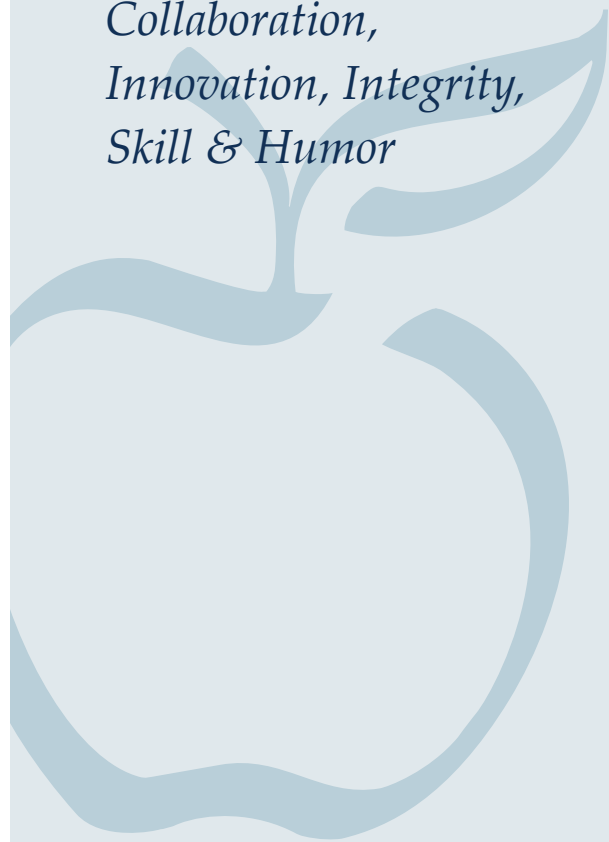
Caring for a lifetime.

Our Vision

*Extraordinary people.
Exceptional care.*

Our Values

*Compassion,
Collaboration,
Innovation, Integrity,
Skill & Humor*



**BLANCHARD VALLEY HEALTH SYSTEM
BOARD MEMBERS**

Ginger Jones	<i>Chair</i>
Dr. Frank Cosiano	<i>Vice-Chair</i>
Jeff Shrader	<i>Treasurer</i>
Dr. James Dowling	<i>Secretary</i>
Myron Lewis	<i>President</i>
Kimberly Stumpp	<i>Immediate Past Chair</i>
Michael Brough	
Annette Edgington	
Dr. William Hopkins	
Dan Kennard	
Beth Kroetz	
Joseph Longo	
Donald Malarky	
Michael Pepple	
Dr. Richard Polder	
John Reineke	
Dr. Richard States	
Dr. Adele Webb	

BVHS EMERITUS

Donald Badertscher
James Shrader
James Woodward

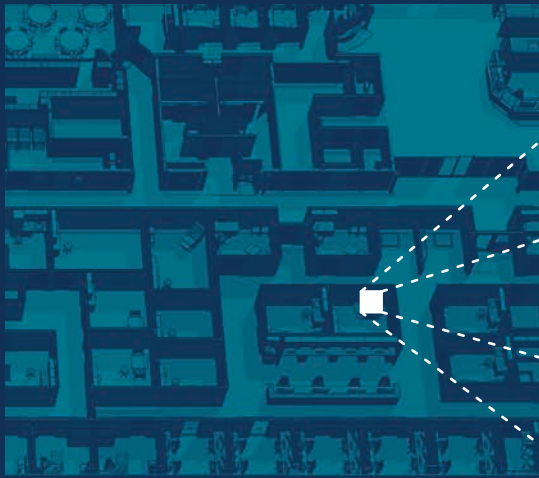


**BVHS CAPITAL CAMPAIGN
STEERING COMMITTEE**

Amy Ballinger	
Jon Ballinger	
Chuck Bills	
Karen George	<i>BVHS Chief Development Officer</i>
Dr. Bill Kose	
Myron Lewis	<i>BVHS President & CEO</i>
Dr. Amber Patterson	
Garry Peiffer	
John Quaid	
John Reineke	
Chuck Stumpp	
Kimberly Stumpp	

**BLANCHARD VALLEY HEALTH
FOUNDATION BOARD MEMBERS**

John Reineke	<i>Chair</i>
John Quaid	<i>Vice-Chair</i>
Roger Miller	<i>Secretary</i>
Sarah Palmer	<i>Treasurer</i>
Dr. Emil Ziegler	<i>Member-at-Large</i>
Amy Ballinger	
Karen George	<i>BVHS Chief Development Officer</i>
Karen Jones	
Myron Lewis	<i>BVHS President & CEO</i>
Dr. Amber Patterson	
Katie Peterkoski	
Barbara Plaughner	
Dr. Richard Polder	
Fred Rodabaugh	
Paul Schmelzer	
Anna Schroeder	



 **Blanchard Valley**
HEALTH SYSTEM

