

# Shifting Gears: Accelerating Transformation for Automotive Supply Chain Excellence

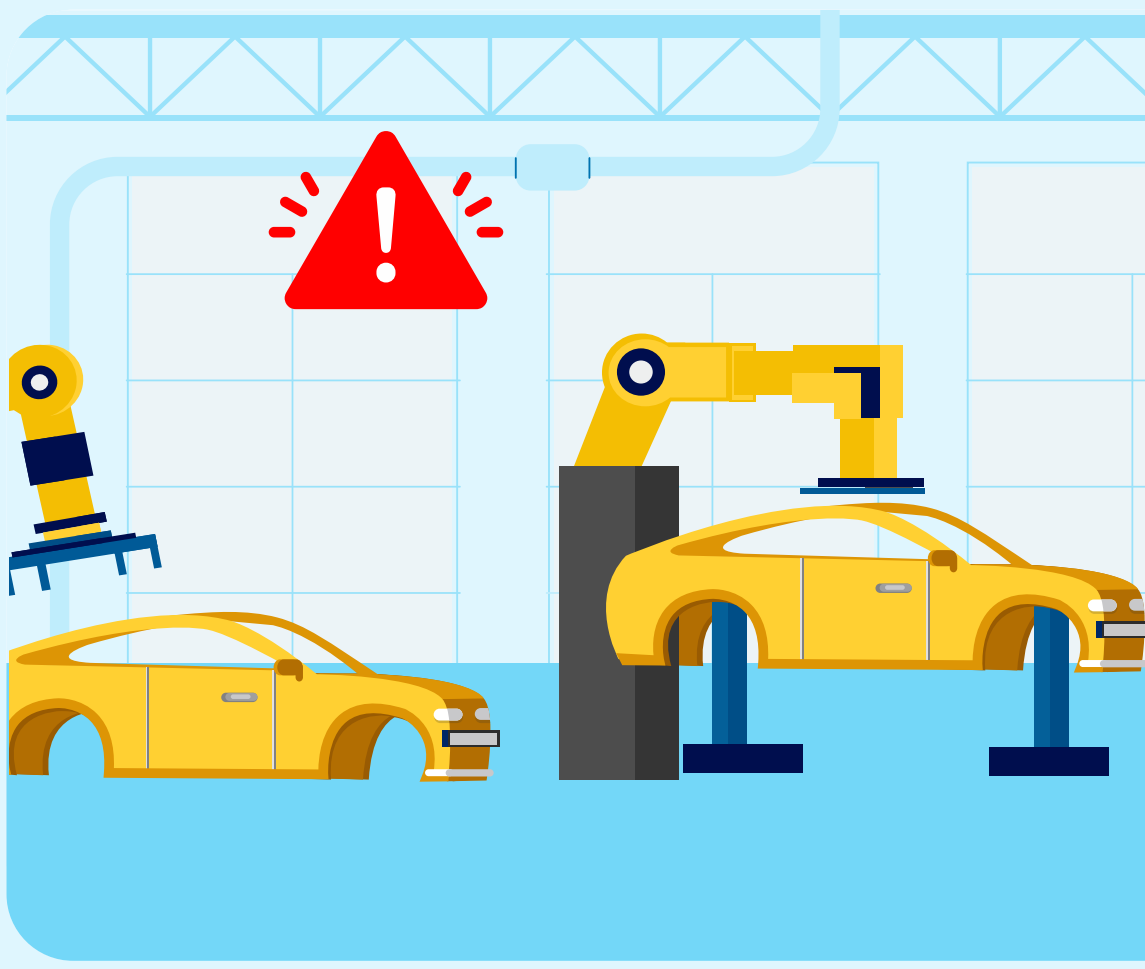
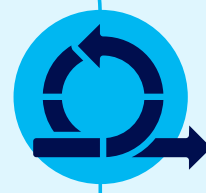


The Automotive industry is racing toward a future defined by evolving customer expectations and sustainability mandates, all while navigating raw material shortages and price volatility. Original equipment manufacturers (OEMs) must reimagine supply chains as resilient, agile ecosystems built for precision.

Let's explore the core value pillars that empower Automotive leaders to turn complexity into strength and drive competitive advantage.

## Powering Agility: Precision That Moves You Ahead

A robust supply chain requires comprehensive planning and real-time, multi-tier visibility. By integrating intelligent slotting, scheduling, and sequencing capabilities, OEMs can dynamically adjust to demand shifts, optimize inventory, and maximize capital returns.



**70%**

of major global auto manufacturers have announced line stoppages in the last year, **45%** of which specifically cite supply chain issues."

— Avnet Silica



## Powering Decisions: Precision That Drives Performance

As supply chains grow more complex, staying ahead requires smarter decision-making. Predictive capabilities enable OEMs to facilitate strategies for customer-specific configurations, streamline production, and align inventory with market needs.

**2-6 months**

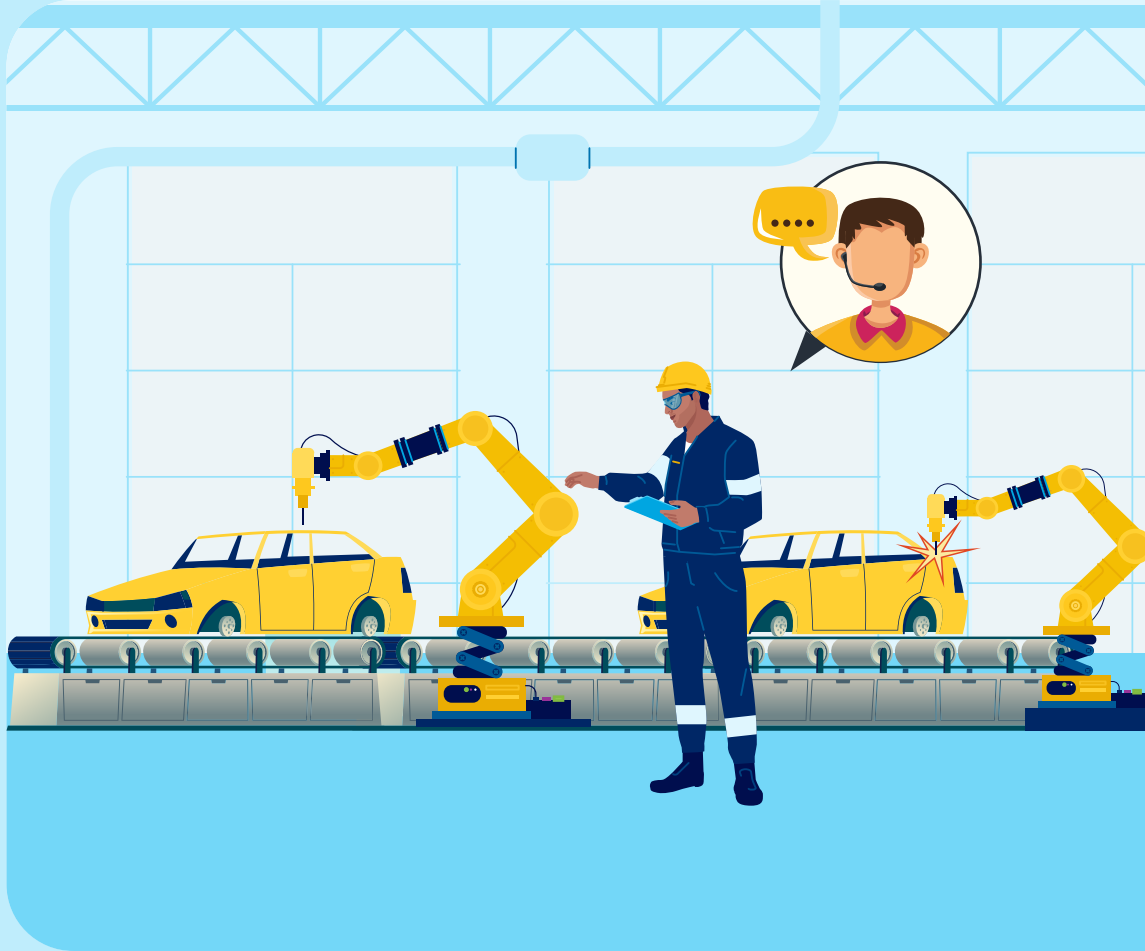
is the typical timeframe for the delivery of custom-ordered vehicles, depending on manufacturers' production schedules and supply chain conditions."

— Cox Chevrolet



## Powering Collaboration: Precision That Enables You To Lead

True resilience is built by forging stronger ties with suppliers at every tier, ensuring transparency and trust. With synchronized operations and real-time insights, manufacturers can ensure uninterrupted workflows and position themselves as leaders in this rapidly evolving industry.



"Only

**30%**

of Automotive experts report having two-way communication with suppliers through a digital or real-time application and interface."

— BCG

## Dig Deeper

Ready to drive your supply chain into the future? With Blue Yonder, you can master supply chain complexity, boost your business performance, and lead in the industry through enhanced decision-making, AI-driven insights, and seamless interconnectivity.

We can help you build a resilient, more intelligent supply chain to empower your Automotive revolution.

[Learn More](#)