



# Faster value through a Composable Journey

Achieve optimal results with innovation that evolves with you

---

## Business context

Business inefficiency is largely driven by legacy technology that constrains innovation. Operations are weighed down by heavy customizations for redundant functionality, convoluted data integrations and fragmented data between software.

These challenges drive up costs and stifle the ability to adapt and advance. Companies are embracing a new era of technology that resolves these frustrating complexities, enhancing their agility and supporting delivery of their strategic goals.

---

## Meeting the challenge head on

Blue Yonder is leading the charge in digital transformation with Composable Journeys—tailored technology adoption paths that accelerate innovation, reduce time to value and lower the total cost of ownership. Our approach empowers your business to scale and adapt at its own pace—in total alignment with your goals, objectives and budget.

The power behind our Composable Journeys lies in the flexibility of the Blue Yonder Platform and our ongoing innovations in composable, connective and cognitive solutions.



Turbocharge your future with a Composable Journey from Blue Yonder.

Your transformation will unfold at the speed and scale that's right for your business.

---

## The bottom line

- Your Composable Journey charts the path to an interoperable and increasingly autonomous supply chain enabled by Blue Yonder innovation.
- The value you'll realize is substantial, extensive and long-lasting.
- The sooner we create your journey, the sooner these benefits will be yours.

---

## A tailored approach to your autonomous supply chain



With over 3,000 customers, Blue Yonder knows that each operation has its own needs and objectives. That's why we've created Composable Journeys. Our team begins by understanding your business goals, operational and technical pain points, current technology footprint and time horizon. Then we collaboratively and rapidly model your key business scenarios and processes against our current and future capabilities.



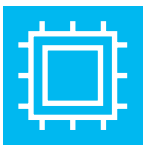
Supported by our innovation roadmap and implementation programs, the business case we create will clearly explain and validate the bottom-line value of your Composable Journey.



Armed with defined, robust and detailed links between your business and technical capabilities into the future, Blue Yonder partners with you to prioritize the how and when of adopting this new era of agility and efficiency. We address your challenges, advance your strategic goals, transform your operations and empower your vision.

---

## Continuous innovation and value driven by AI



Blue Yonder's Composable Journey offers a uniquely tailored implementation path guided by industry best practices. Powered by an AI-first, cloud-native platform, your journey will enhance your operations and evolve with your business.



Instead of a lengthy, monolithic process, our phased approach delivers up to 12x increased value by addressing your specific needs and vision.

---

## Unmatched benefits that evolve with you

- **2x IT Simplification**

Achieve seamless integration, eliminate data migration and replace customizations with composable microservices, easy extensibility and a unified data cloud.

- **4x Interoperability**

Break down silos for better collaboration across the organization, faster decision-making, fewer urgent actions and less data transfer.

- **6x Platform functionality**

Leverage Blue Yonder's industry-leading AI and ML capabilities for superior inventory positioning, advanced simulation and customizable forecasting techniques.

---

## Are you ready for what's next?

A Blue Yonder Composable Journey can help you prioritize and plan your consumption of new innovations. To learn more and get started, contact your Sales Rep or visit [Blueyonder.com/composable-journey](https://blueyonder.com/composable-journey).