

Demystifying AI for Supply Chain Leaders

Moving Transportation Forward With Artificial Intelligence

Why AI is a good thing for transportation teams

Transportation is the lifeblood of the supply chain, constantly working to ensure that materials, components, and products flow where they need to be. **Transportation professionals** drive this critical function, managing logistics, collaborating with fleets, suppliers, and carriers, and integrating with warehouse and order management.

But keeping the flow moving has never been more challenging, with disruptions such as natural disasters, human-made debacles like the Suez shutdown, increasing documentation requirements, and near constant labor shortages.

Are transportation teams set up to succeed in the current supply chain paradigm?



What's holding back transportation professionals?

Endless micro-decisions



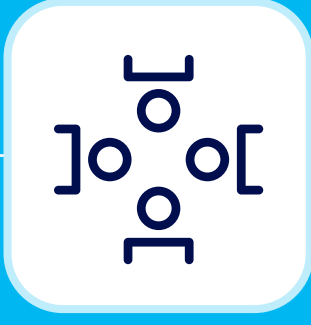
Putting out every little fire distracts from big-picture strategizing

Slow-motion mitigation



When disruption happens, it takes too long to make decisions

Siloed expertise



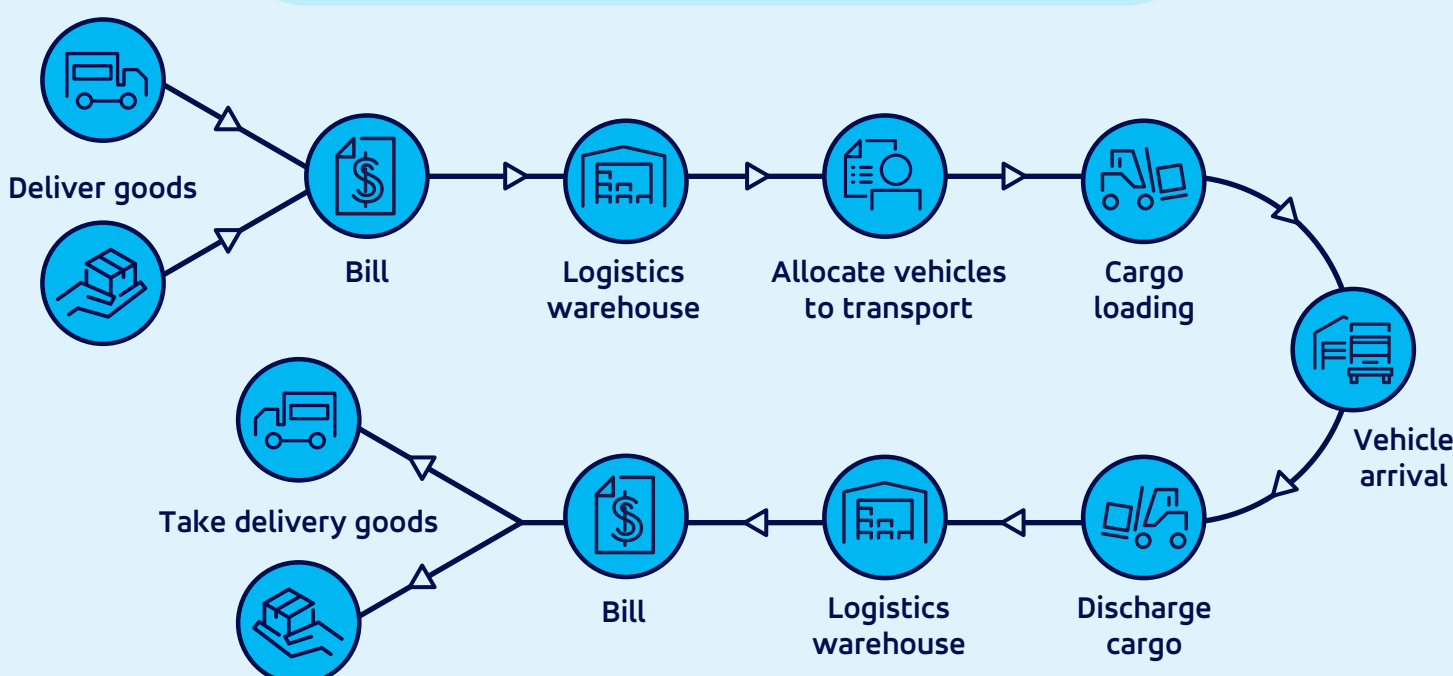
Without knowledge sharing, people fall back on "what worked before"

With AI, you can start making moves

AI is positioned to change the way transportation operates within the supply chain.

Model What-if Scenarios

AI modeling predicts how disruptions will affect routes, enabling transportation professionals to have a plan in place that keeps the system running smoothly.



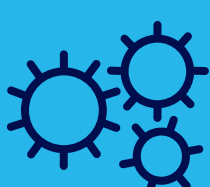
Mitigate Risk in Real Time

AI processes data 24/7, not in scheduled increments—so risk mitigation decisions are made based on what's happening right now.



Align Processes Around Historical Data

When AI is training based on historical data, knowledge and expertise are accessible to everyone at the company and embedded in all processes.



Uncover efficiencies with AI agents

AI agents can optimize many aspects of the transportation network, including route planning, demand forecasting, vehicle performance, and tracking.



Transportation professionals have an excellent array of AI solutions waiting for them. The sooner companies adopt AI into the supply chain, the sooner their transportation network will see the benefits—**more efficiency, lower costs, and better morale for their transportation teams.**

Learn more about AI in the supply chain here.

[Download E-book](#)