

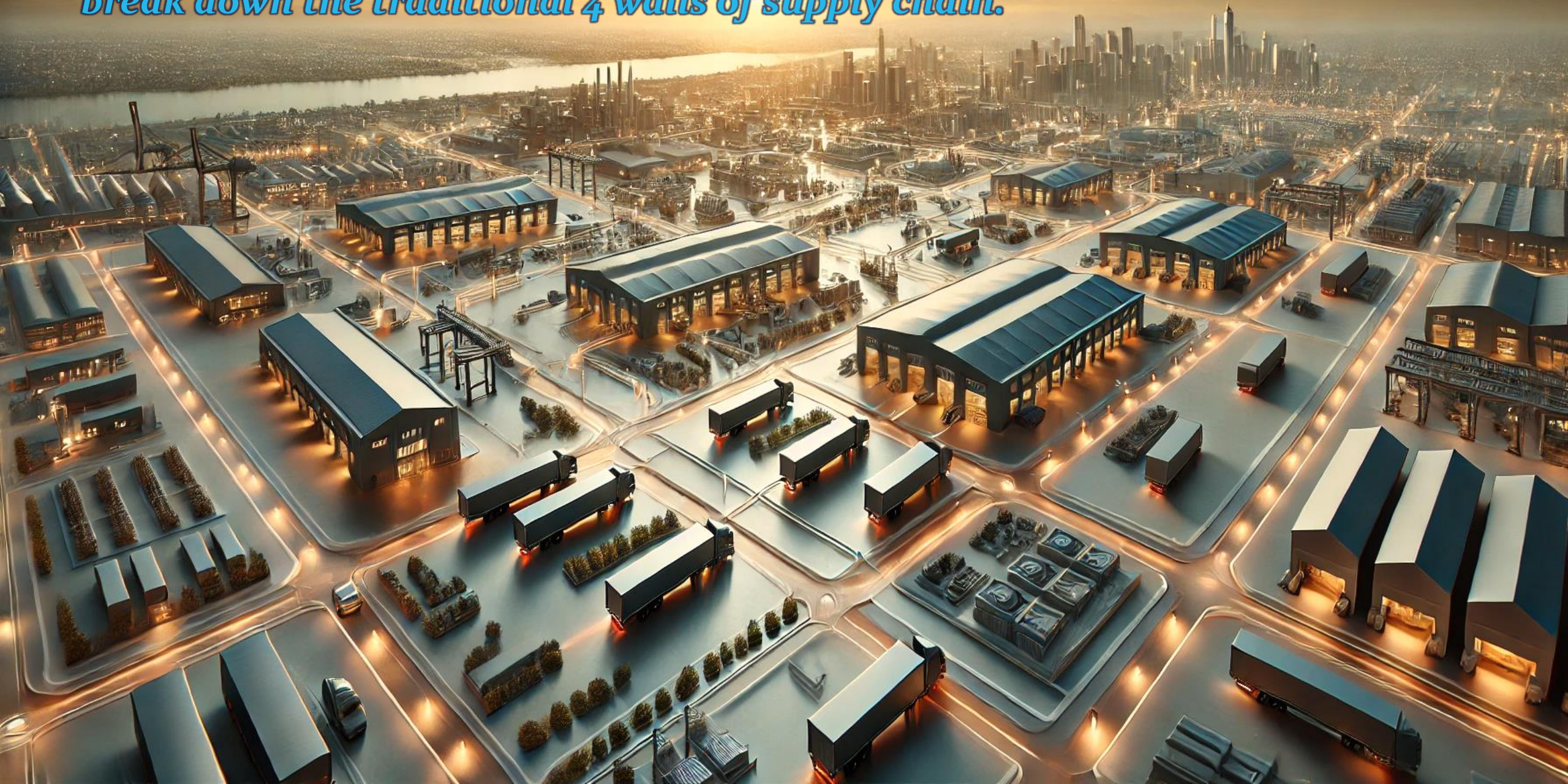


# The Digital Supply Chain Network™

Journey toward autonomous supply chain management & that elusive 5<sup>th</sup> wall

 **BlueYonder**  
Fulfill your potential™

*“Most organizations have projects in the works to break down the traditional 4 walls of supply chain.”*

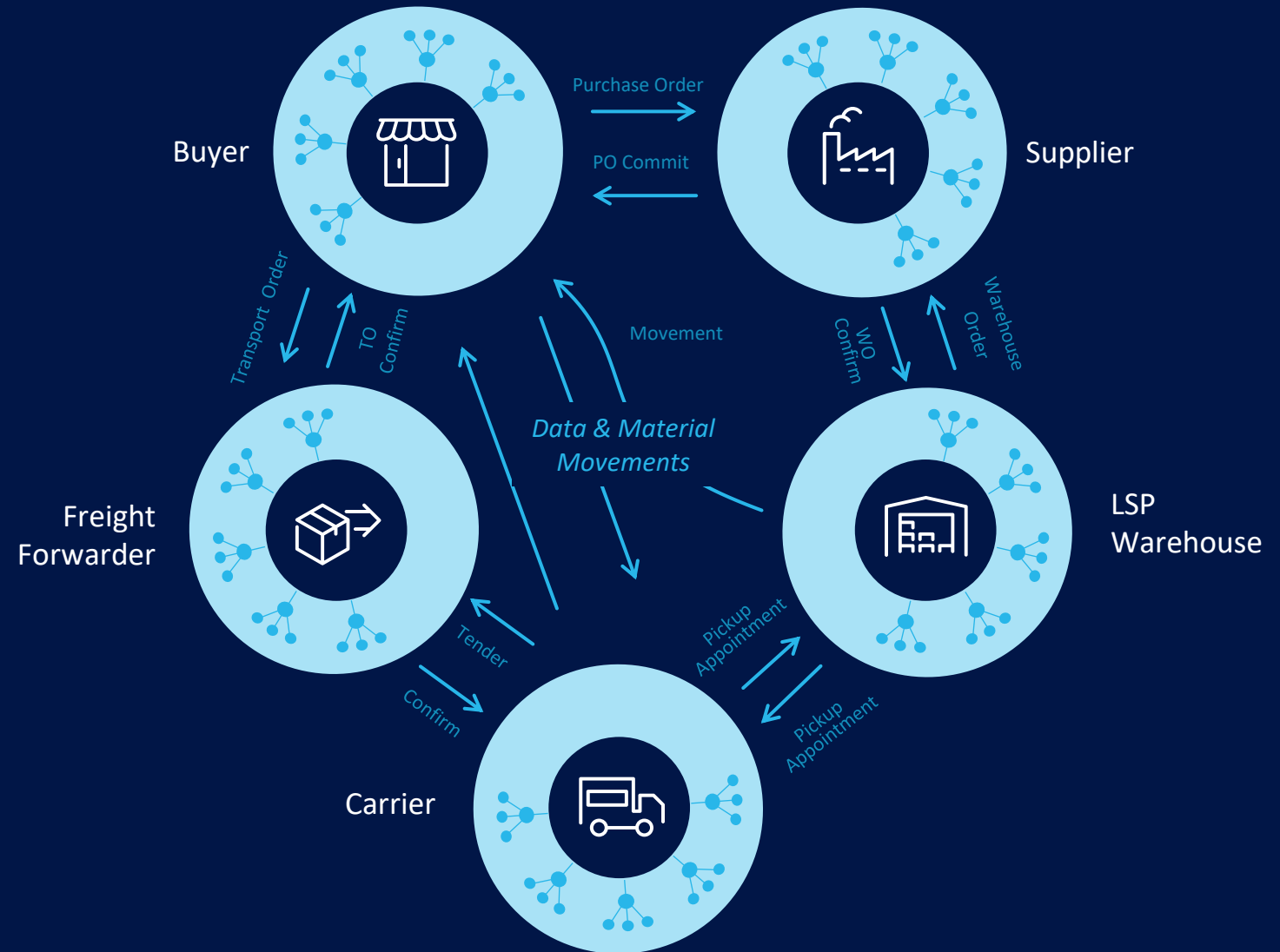


There is a 5<sup>th</sup> wall that continues to be a barrier to true efficiency.



# Traditional Supply Chain

- Point-to-Point
- Bullwhip
- Fragmented data
- Inflated lead times
- Blind spots
- Extended network
- Siloed decisions

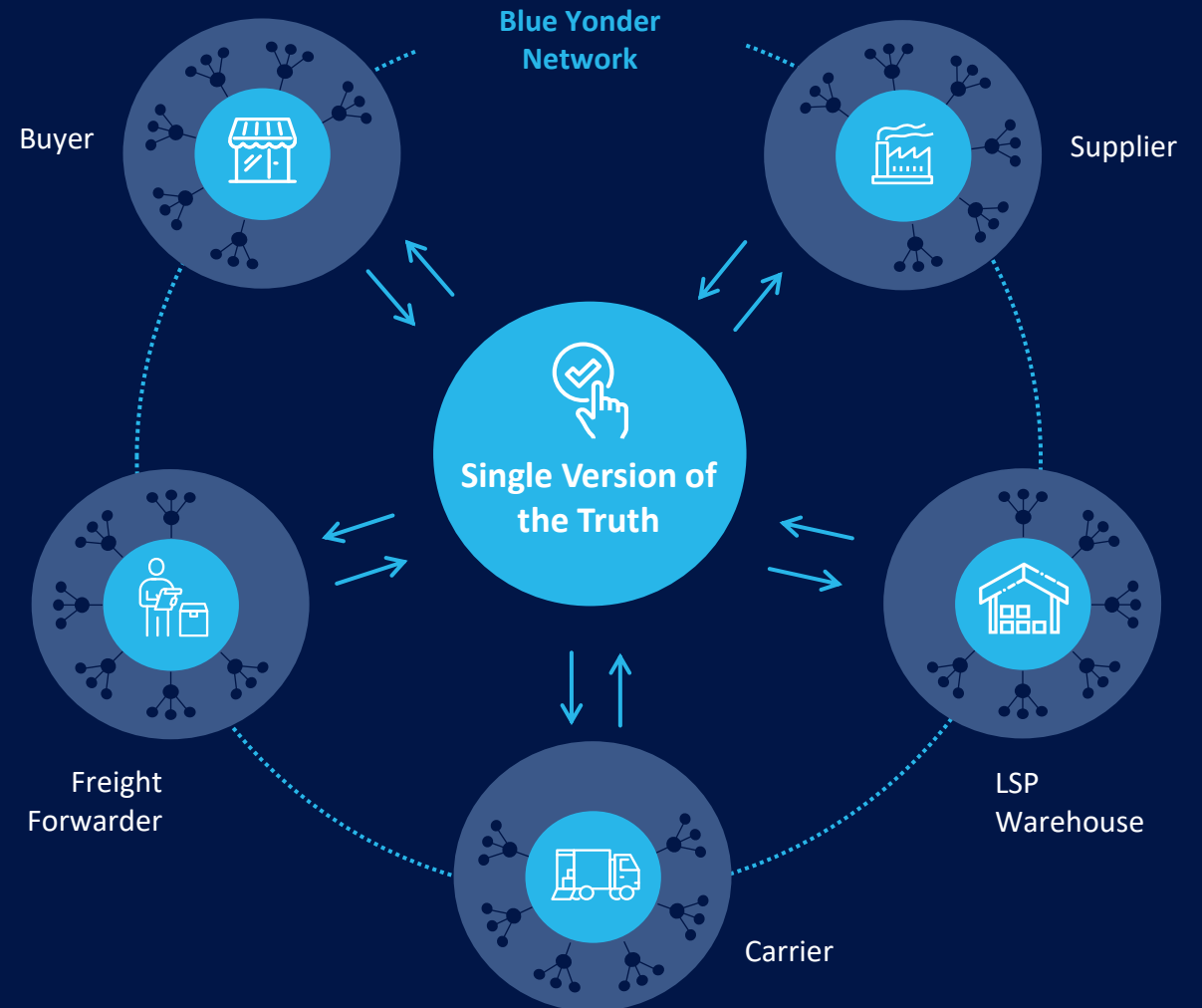


*Our Historical Attempt to  
"Tearing down the 4 walls"*

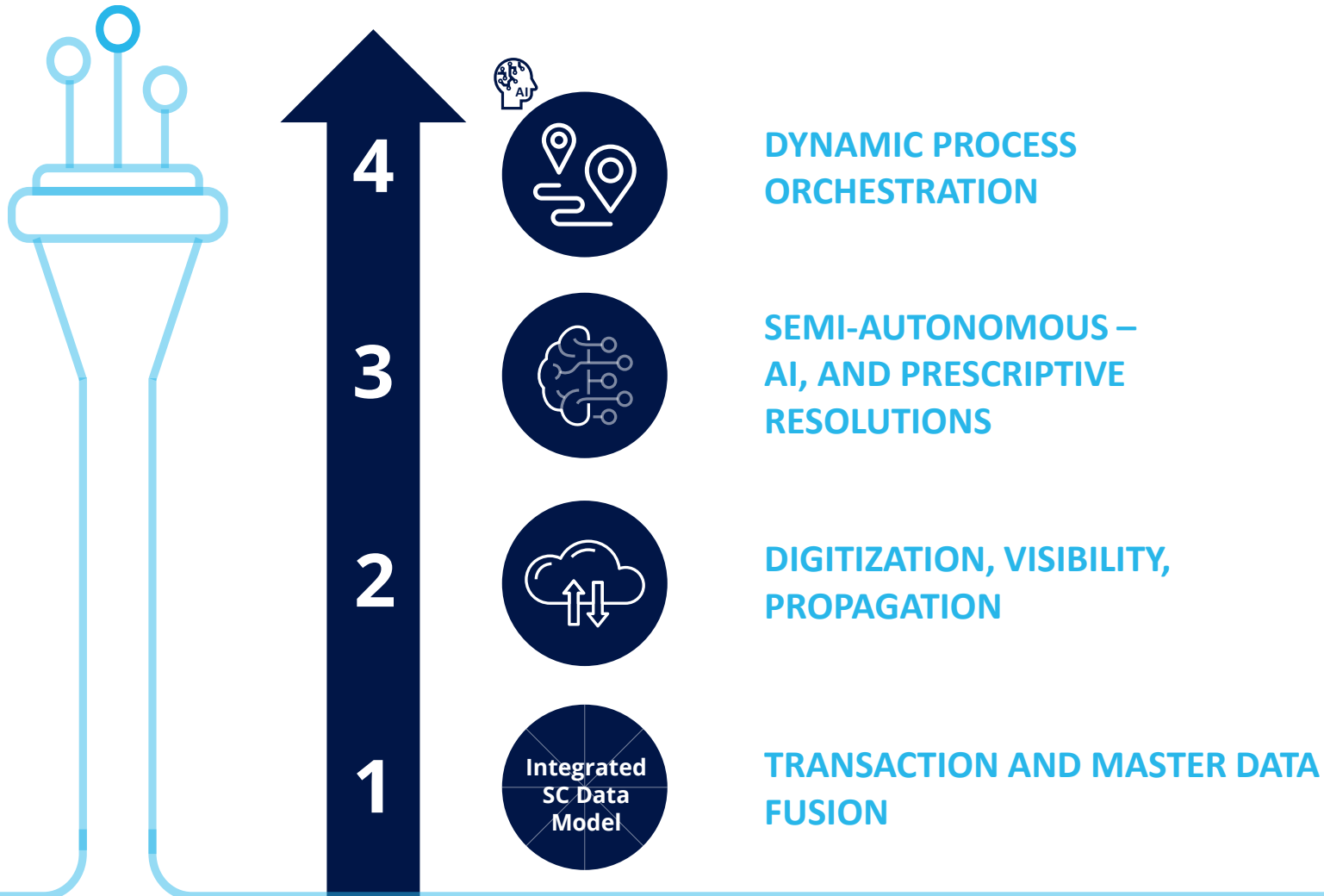


# A New View is Needed

- Single version of truth
- Real-time visibility & actionability
- Controlled permissions
- Role specific perspectives
- Collaborative digital ecosystem
- Digital transformation



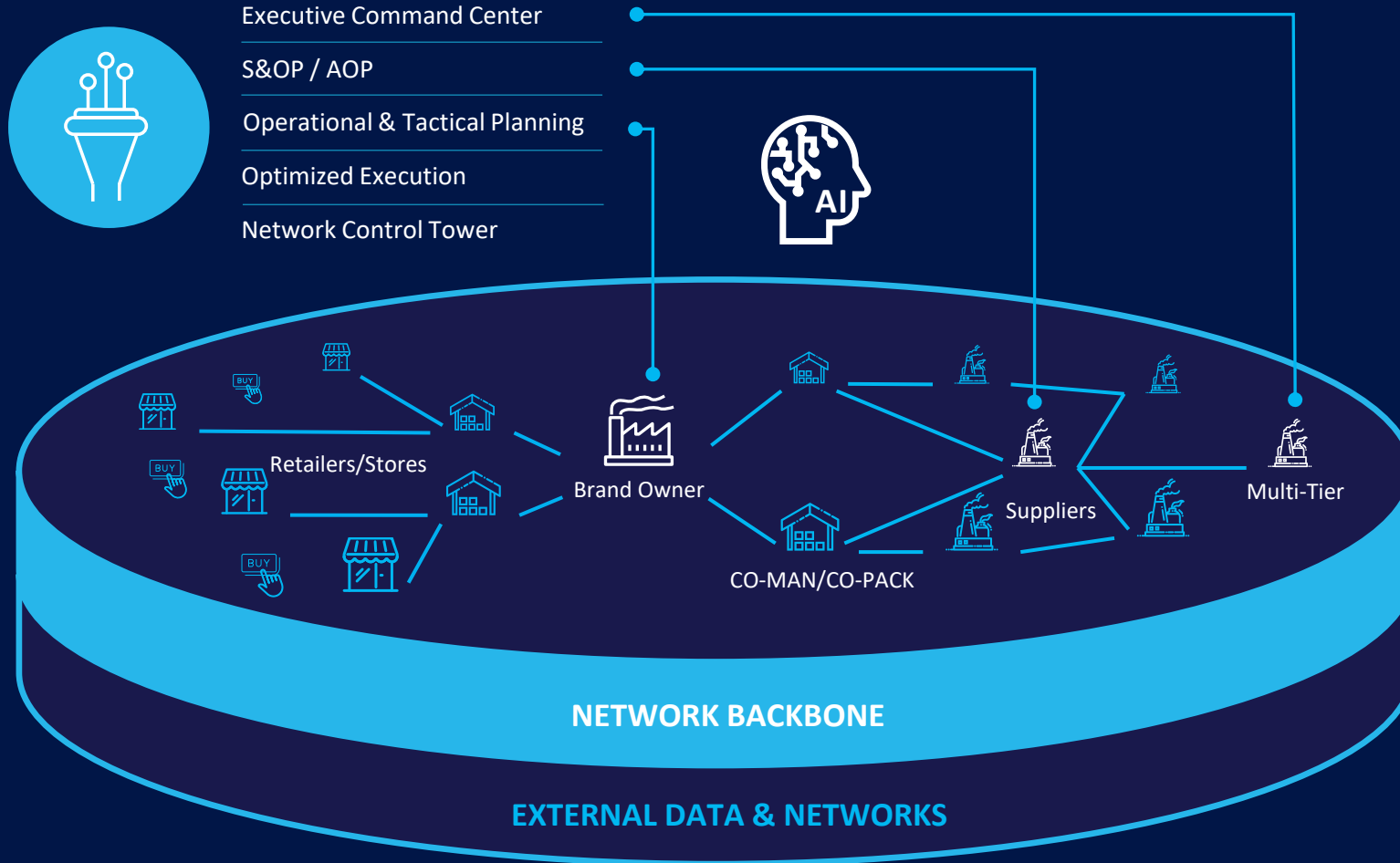
# Why Companies Need A Smart Command Center



- Reduced headcount and improved cycle time
- Improved exception mgmt. by 90%
- Reduced variability and improved agility
- Eliminate all non-physical lead times
- Single version of truth across whole community
- Value for all participants

# A True Digital Twin

Breaking down the capabilities



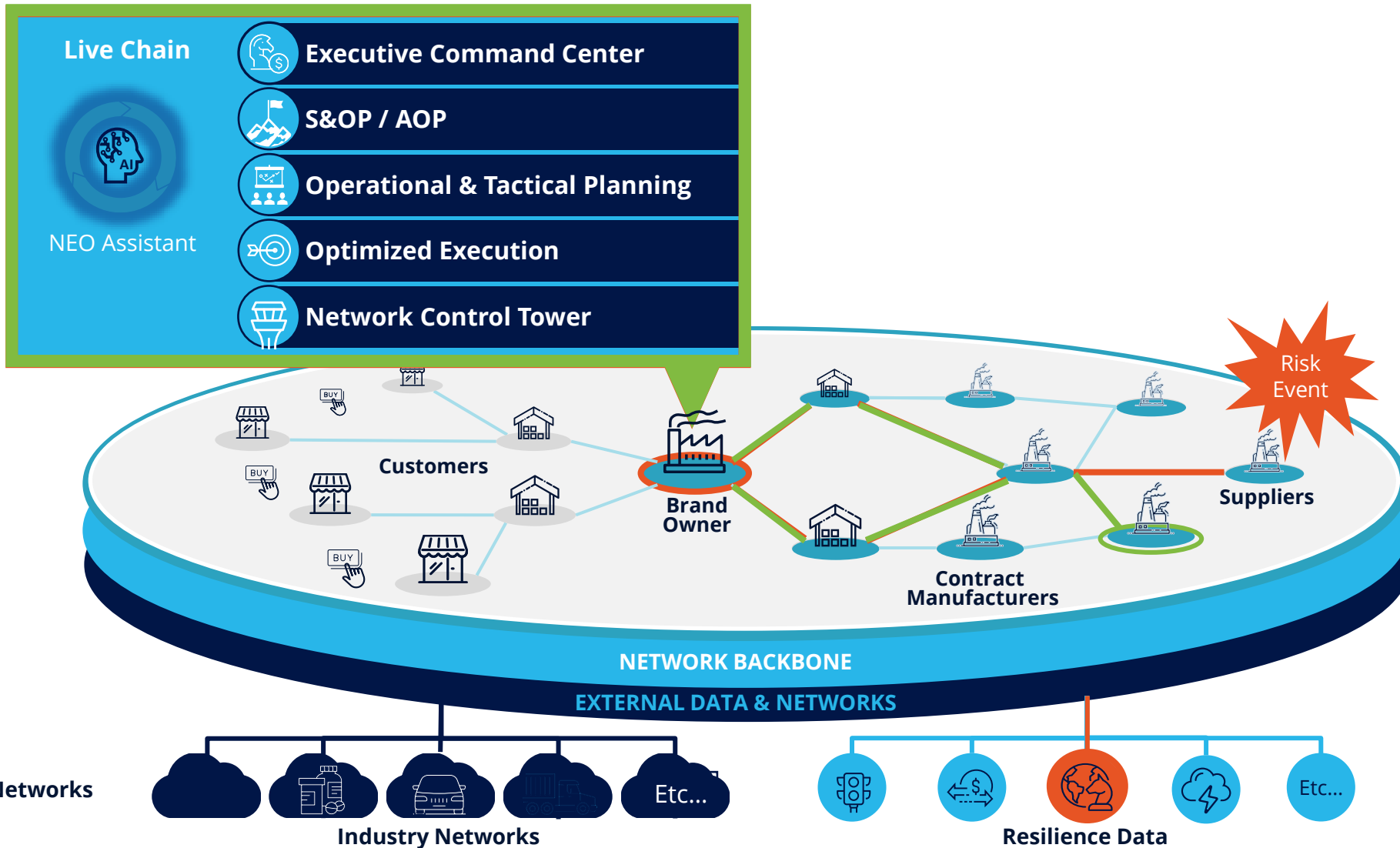
## What is needed:

A True Interoperable End-to-End Supply Chain Network

- Connects and coordinates legacy systems
- Faster onboarding and speed to value
- Harmonized data across all parties in your network
- Quickly embrace new services with agility
- AI benefits across your entire Network



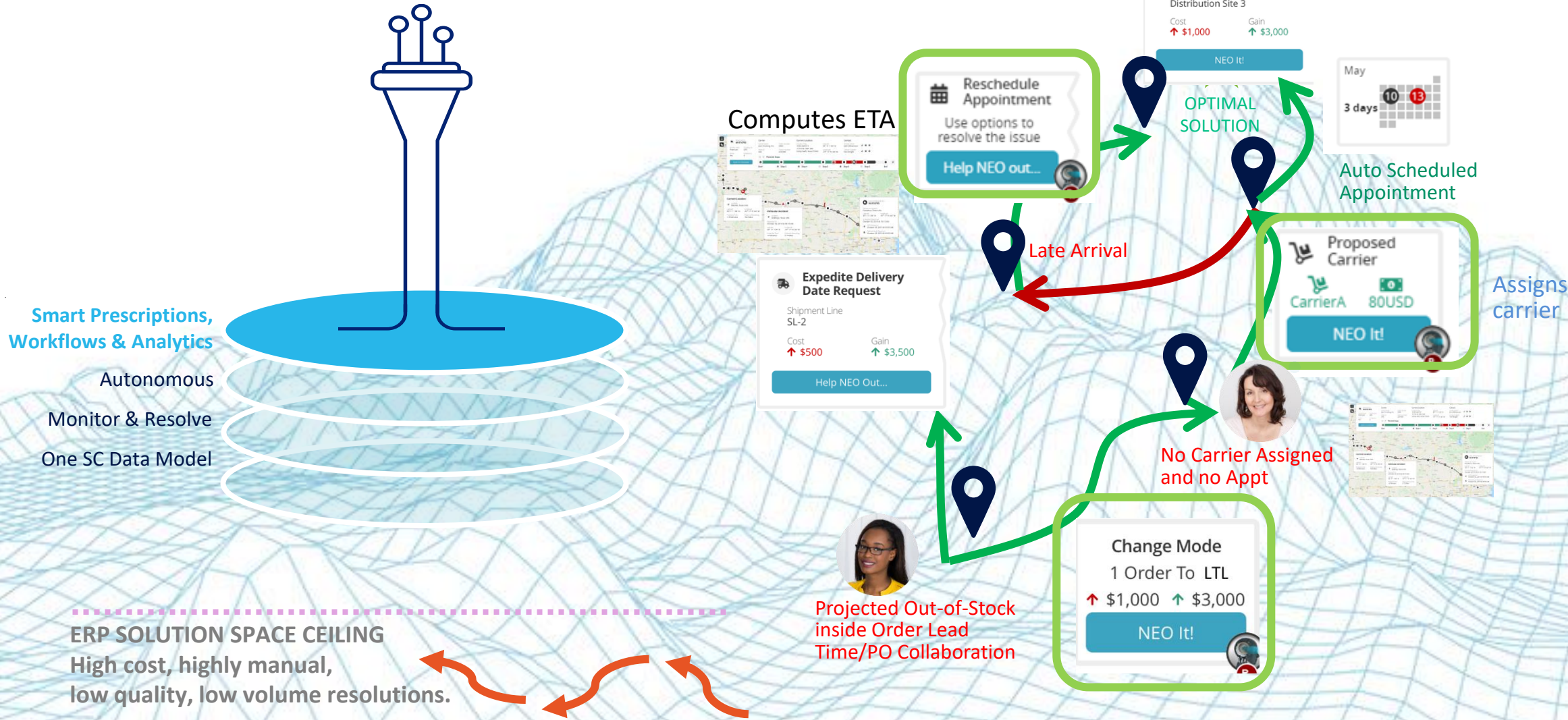
# Live Chain – Scenario Chain



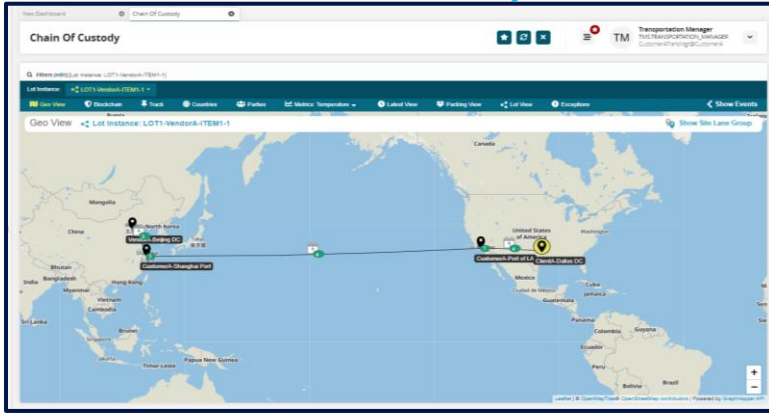


# Real-time use case(s)

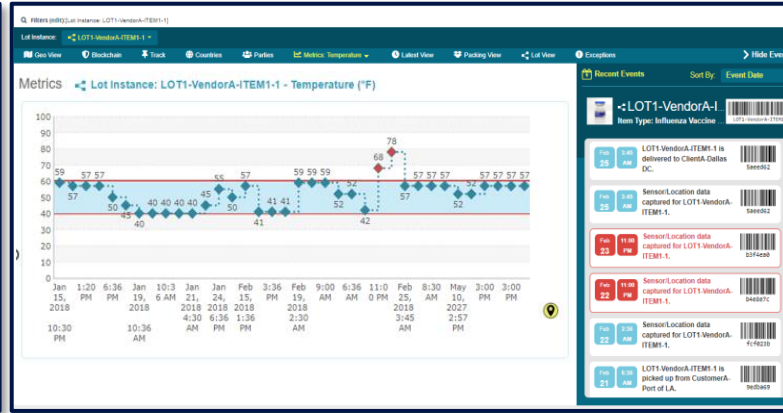
## Intelligent planning, AI assistant, adaptive flows



## Full Traceability



## Cold-Chain Temperature Tracking (IOT)



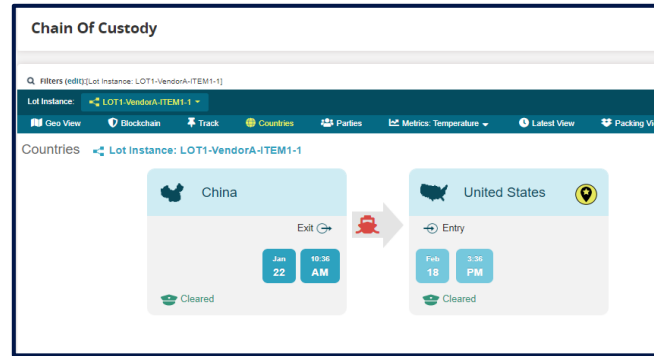
# Chain of Custody

Traceability & Event Tracking

## Patented Multi-Party Collaboration

Owner	Possessor	Recaller	Inspector	Orchestrator	Prospective Buyer	QA	Customs
VendorA	CarrierA	VendorA	CustomerA				
CarrierA	VendorA	CarrierA	CustomerA				BrokerB
CarrierA	VendorA	CarrierA	CustomerA				
CarrierB	VendorA	CarrierB	CustomerA				BrokerA
CarrierB	VendorA	CarrierB	CustomerA				
CarrierC	VendorA	CarrierC	CustomerA				
CarrierC	VendorA	CarrierC	CustomerA				ClientA

## Document Management



Multi-Party Collaboration

Temperature Tracking

Recall Management

FSMA 204 Compliance

GDST

ESG

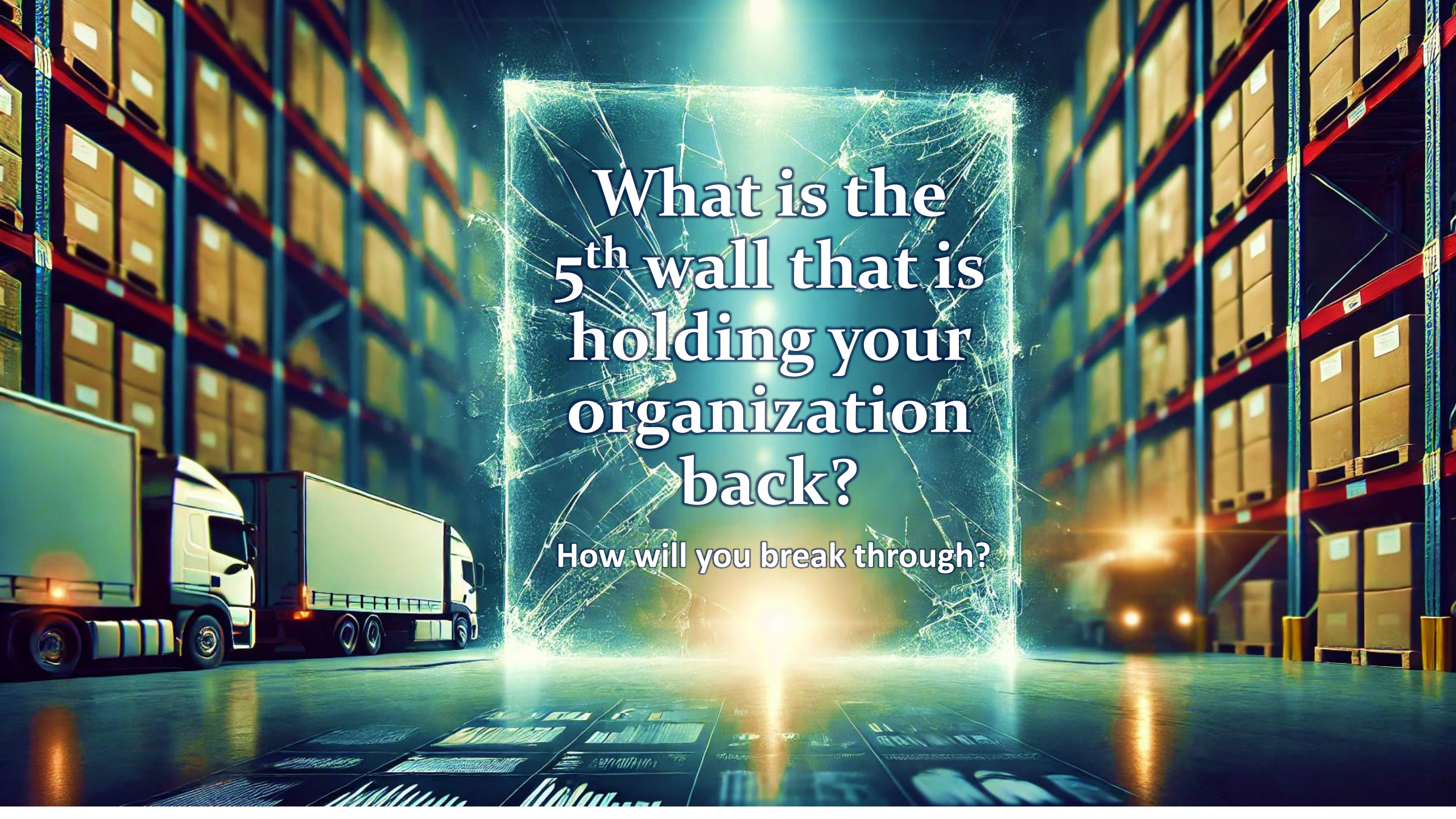
Carbon

## Item-, Lot-, Lot Instance-Based & Recall

Item/lot/instance	State	Imported quantities	Description	Recaller	Recommended disposition	Notes
BL-LOT1	Initiated	2	Lot Based Recall	CustomerA	RETURN	
LOT1-VendorA-ITEM1-1	Initiated	3	Lot Instance based recall	CustomerA	RETURN	

## Exception management

Exception No.	State	Event Date	Location	Actioned By	Response Date
1740	Pending	May 10, 2027	Customer-Port of LA	ClientA/HandMgr	
1688	System Generated	May 10, 2027		SYSTEM	Feb 23, 2018
1613	System Generated	May 10, 2027		SYSTEM	Feb 23, 2018
1578	System Generated	May 10, 2027		SYSTEM	Feb 22, 2018



What is the  
5<sup>th</sup> wall that is  
holding your  
organization  
back?

How will you break through?



# Appendix

