



The ‘Must Haves’ for a Resilient Supply Chain

Does Your Supply Chain Planning Solution Make the Cut?

Global companies are losing billions in value through lost sales, increased COGS, unbalanced inventory, supply uncertainties, lower organizational productivity, and underwhelming performance of sustainability initiatives.

An accurate and optimized supply chain plan is the starting point for better performance and driving growth, but a lot of companies are stuck with outdated and underperforming solutions that are not in sync with the real world.

The Top 15

The following check list defines the top 15 capabilities that you should look for when assessing your current or future supply chain planning solution vendor.



End-to-End Collaboration



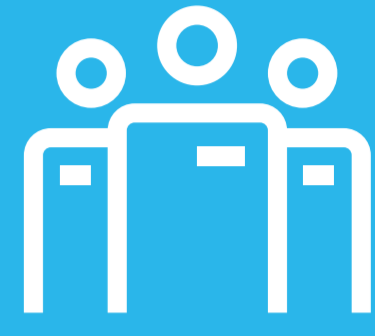
Seamlessly Integrated AI



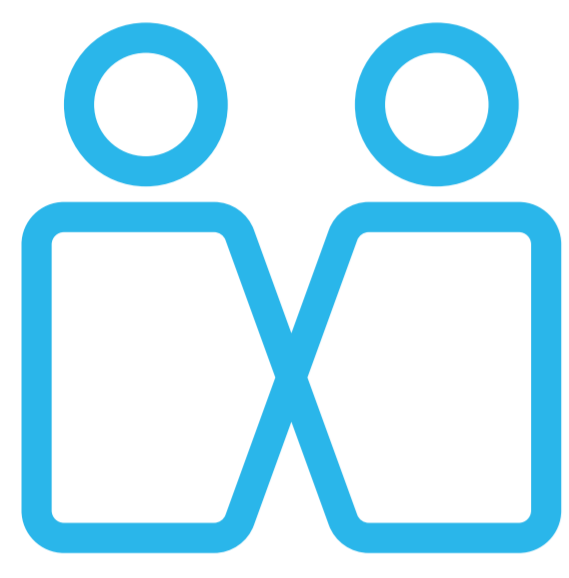
Supply Chain Optimization and Automation



Technology Platform for Growth



Best-in-Class Partner Ecosystem



End-to-End Collaboration

- ▶ **A Truly Integrated and Purpose-Built End-to-End Supply Chain Solution Suite**

End-to-end and truly interoperable supply chain solution suite that includes integrated supply chain planning, warehouse management, transportation management, labor management, and commerce.

- ▶ **Collaborative Planning**

Streamlined collaboration, enabling easy collation of inputs from key stakeholders at the right time across business functions – sales, marketing, finance, planning, manufacturing, etc. – to create an optimized plan.

- ▶ **Unified Data Model**

Centralized data source to drive business decisions utilizing real-time data from diverse data sources spanning enterprise, external, IoT/sensors, and events.



Seamlessly Integrated AI

- ▶ **Market Proven and Scalable AI**

Extensive library of AI and ML models that supports limitless scale and multiple levels business complexity and granularity.

- ▶ **“Glass Box” AI**

Transparent and explainable AI with logical access to data models, algorithms, and APIs – increase adoption and confidence with your planners.

- ▶ **Easy to Use AI**

Intuitive UI and support tools to help your planners and in-house data science team to confidently and securely create, test and deploy custom models at production scale.



Supply Chain Optimization and Automation

- ▶ **Event-Driven and Intelligent Scenario Planning**

Enables you to respond to market events quickly by automatically creating and evaluating a logical set of scenario plans, as well as allowing planners to take strategic action to manage the risk/opportunity.

- ▶ **Multi-Objective (and Fast) Supply Planning Optimization**

Single objective optimization approach fails to take into account real world priorities and take a long time to output a low performance supply plan. Multi-objective optimization allows planners to model business goals correctly and leads to a high performing and optimized supply plan.

- ▶ **AI-Driven Feature Engineering**

AI and ML algorithms that continuously and automatically learn and determine the best combination of factors from all available data to improve the model, leading to more accurate and optimized plans.



Technology Platform for Growth

- ▶ **Cloud-Native Architecture**

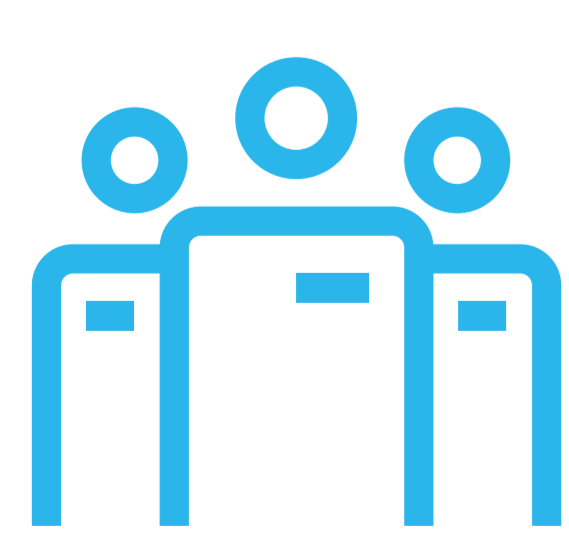
A true SaaS platform that is cloud native and microservices-based reduces time to value with faster deployments and disruption free upgrades. Rather than rip and replace, deploy new enterprise planning capabilities with the flip of a digital switch.

- ▶ **Easy Configuration**

Low code configurability and domain-centric workflows make it easy to align solutions with your specific business requirements.

- ▶ **Scalability**

Scalability that is driven by business requirements and not solution restrictions is vital to support end-to-end supply chain planning and global deployments.



Best-in-Class Partner Ecosystem

- ▶ **Industry Experience and Expertise**

Supply chain expertise to back all stages of the relationship, from selection to support coupled with a partner ecosystem that has in-depth industry experience and extensive solution expertise.

- ▶ **Global and Regional Partner Network**

Partner ecosystem that can support your business goals, from focused consultants that specialize in your region to global SIs that can support large digital transformation goals.

- ▶ **Partner-Centric Approach**

A vendor that invests in continuous training and accreditation of partners and includes partners in strategic discussions that impact you directly, ensuring your long-term success.

Learn More About the New “Must Have” Capabilities

[Read More](#)

