



CUBA ~ maximalist print and embroidery geometrics

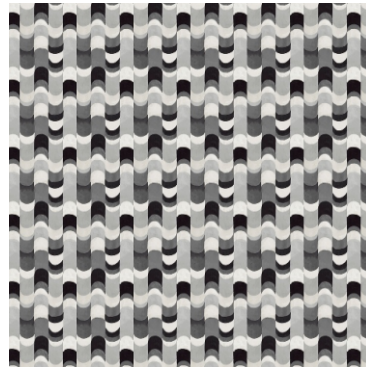
Maximalist design takes a new direction in Cuba, an inspired portfolio of geometrics showcased through a combination of prints and embroideries. All suitable for upholstery, the collection's conversational prints are complemented by a subtly textured base cloth for an understated finish. A trio of impactful embroideries create depth and intrigue, heightened in impact by prints channelling characterful Cuban architecture. The revival of 70s interiors has been at the forefront of the inspiration for Cuba's palette, with fresh pastel tones adding a contemporary twist on the timeless theme.



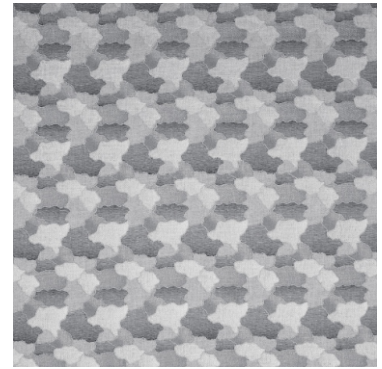
**Santiago Jet**



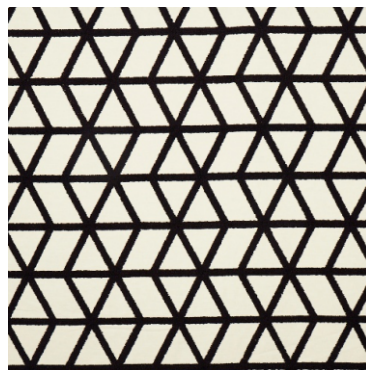
**Ramiro Jet (Embroidery)**



**Castillo Jet**



**Carmen Jet (Embroidery)**



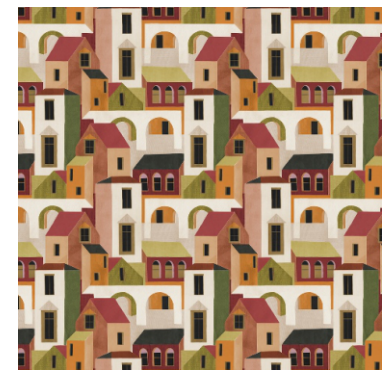
**Marissa Jet (Embroidery)**



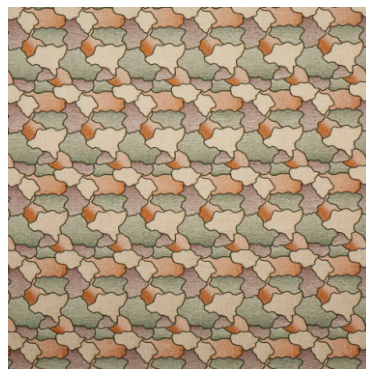
**Varadero Jet**



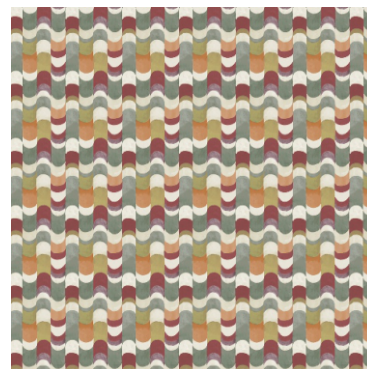
**Marissa Crystal (Embroidery)**



**Santiago Cactus**



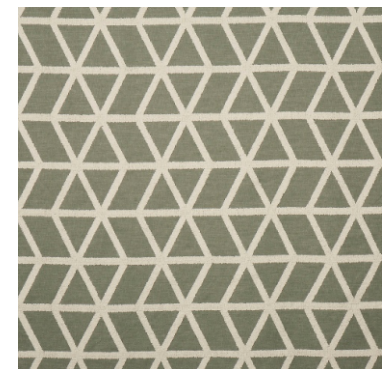
**Carmen Cactus (Embroidery)**



**Castillo Cactus**



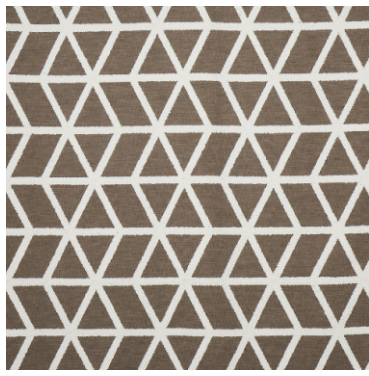
**Varadero Cactus**



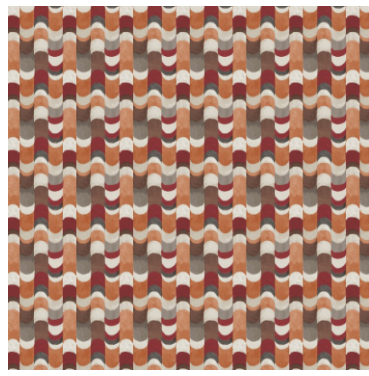
**Marissa Cactus (Embroidery)**



**Santiago Sunset**



**Marissa Umber (Embroidery)**



**Castillo Sunset**



**Varadero Sunset**



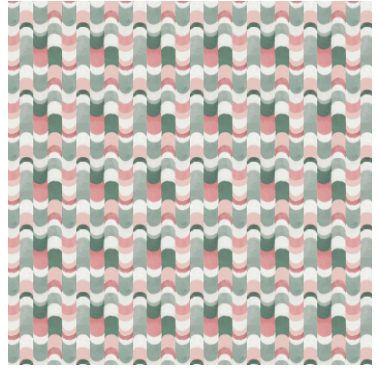
**Marissa Sand (Embroidery)**



**Santiago Mojito**



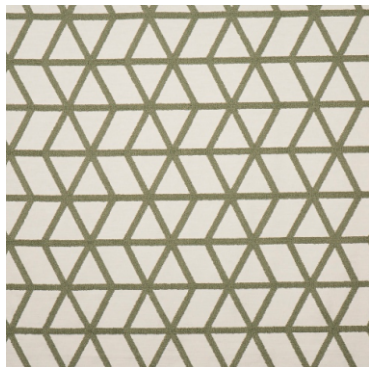
**Ramiro Mojito (Embroidery)**



**Castillo Mojito**



**Varadero Mojito**



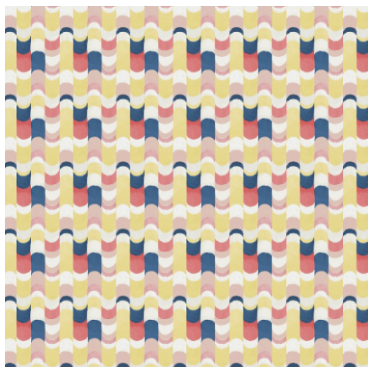
**Marissa Mojito (Embroidery)**



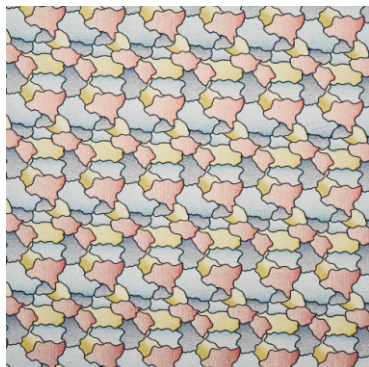
**Santiago Sorbet**



**Ramiro Sorbet (Embroidery)**



**Castillo Sorbet**



**Carmen Sorbet (Embroidery)**



**Varadero Sorbet**



**Marissa Peach (Embroidery)**

## CUBA COLLECTION DETAILS

### Carmen (Embroidery)

69% Poly./22% Cationic/9% Cott. 100% Cotton

144cm (useable 133cm)

V: 23.6cm | H: 16.7cm

Curtaining and Accessories

Dry Clean Only

### Castillo

144cm (useable 140cm)

V: 20.5cm | H: 17.8cm

Multi Purpose 60,000 rubs

30°C ✕ 👁 P ✕

### Marissa (Embroidery)

78% Polyester /22% Cotton

144cm (useable 136cm)

V: 24.7cm | H: 22cm

Curtaining & Accessories

Dry Clean Only

### Ramiro (Embroidery)

40% Poly./35% Cott./25% Visc

139cm (useable 129cm)

V: 31.3cm | H: 32.5cm

Curtaining & Accessories

Dry Clean Only

### Santiago

100% Cotton

144cm (useable 140cm)

V: 53cm | H: 46.3cm

Multi Purpose 60,000 rubs

30°C ✕ 👁 P ✕

### Varadero

100% Cotton

144cm (useable 140cm)

V: 41.3cm | H: 35.5cm

Multi Purpose 60,000 rubs

30°C ✕ 👁 P ✕



**STANDARD 100** Carmen, Marissa and Ramiro



Volume Prestigious Collection - Page 3/3