

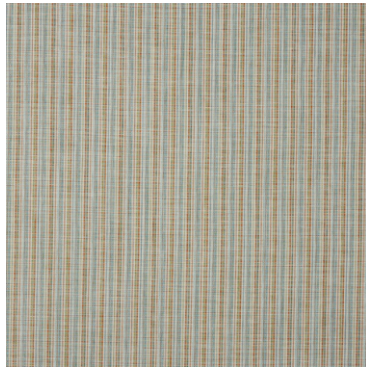


MILAN ~ 70's revival with inherently retro designs

Taking cues from the catwalks of the most on-trend fashion houses, Milan embodies the recent 70s revival within its inherently retro designs. A trio of rich, slub cotton-base prints feature abstract painterly effects and dot work detailing, for a modern take on inherently retro finishes. Designed to coordinate effortlessly, the collection's prints are complimented by weaves showcasing multi-tonal effects for flashes of vibrant colour, with further excitement created by an ombre-effect embroidery for an unexpected twist. A vibrant palette of 70s inspired hues amplifies the collection's timeless style, grounded by neutral tones running throughout to allow each design to be used in harmony for truly striking schemes.



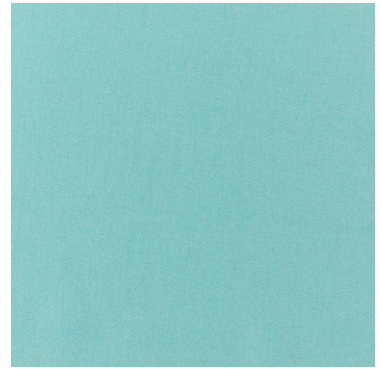
**Adriana Papaya**



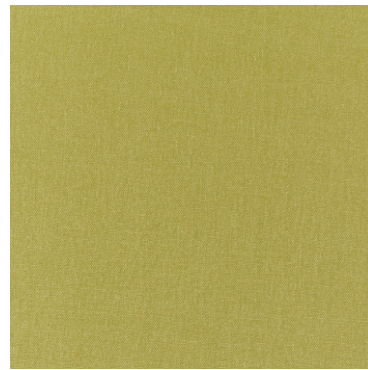
**Cici Papaya**



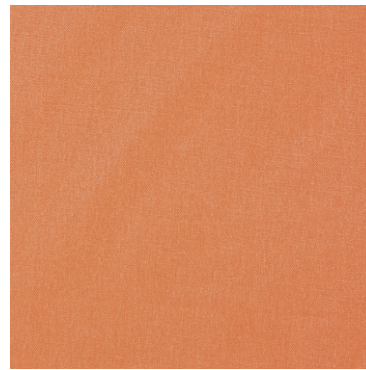
**Nico Papaya**



**Style Aqua**



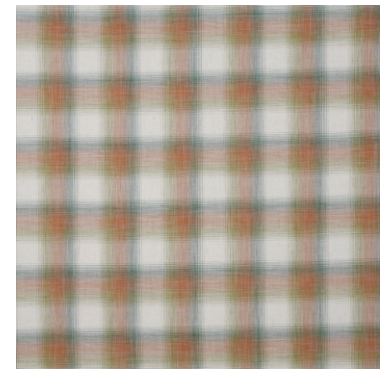
**Style Kiwi**



**Style Pumpkin**



**Gabriela Papaya**



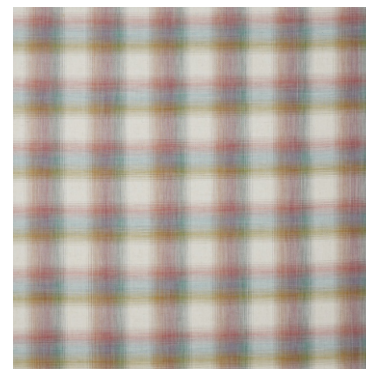
**Aldo Papaya**



**Adriana Bon Bon**



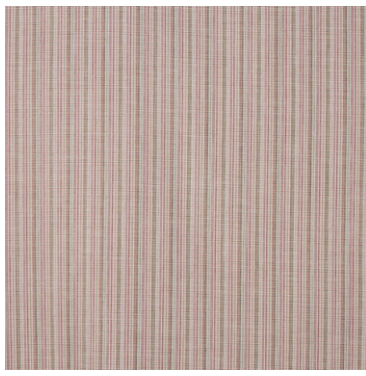
**Alessio Bon Bon**



**Aldo Bon Bon**



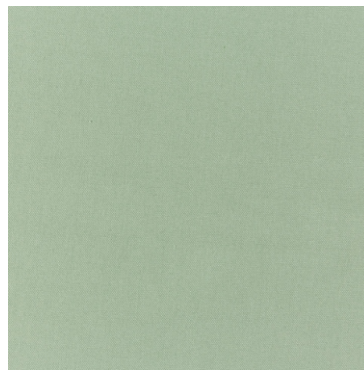
**Gigi Bon Bon**



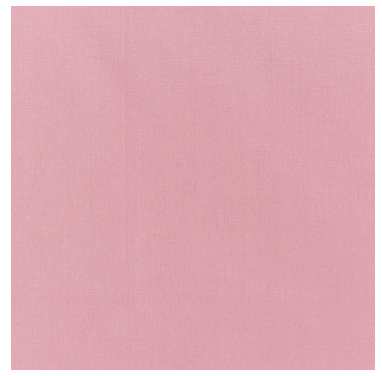
**Cici Bon Bon**



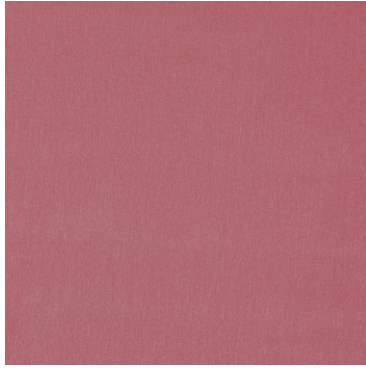
**Nico Bon Bon**



**Style Green Tea**



**Style Bon Bon**



**Style Rosebud**



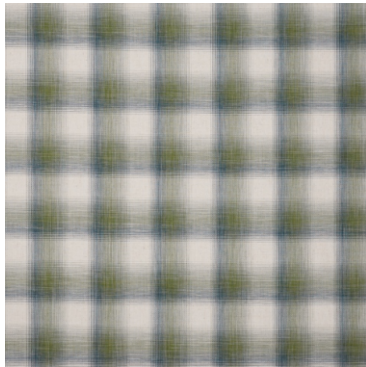
**Gabriela Bon Bon**



**Adriana Verdi**



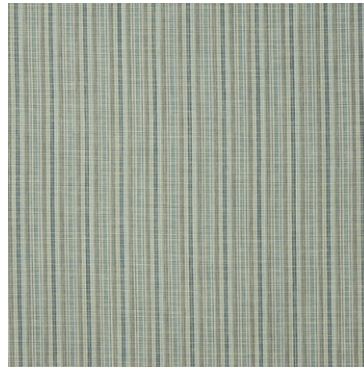
**Alessio Verdi**



**Aldo Verdi**



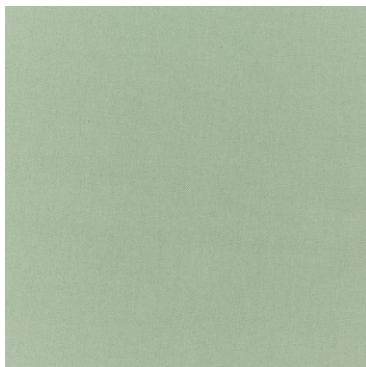
**Gigi Verdi**



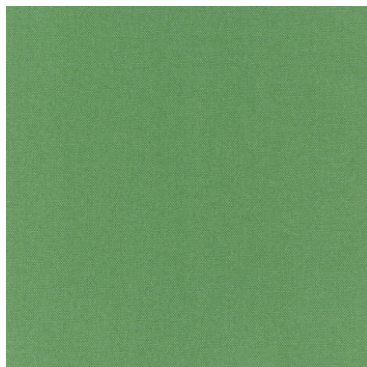
**Cici Verdi**



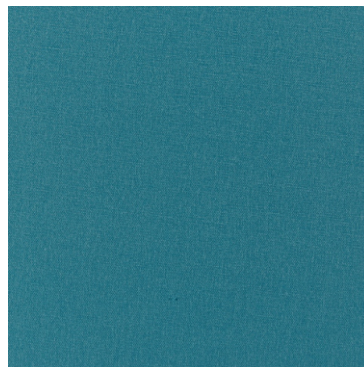
**Nico Verdi**



**Style Green Tea**



**Style Cactus**



**Style Pacific**



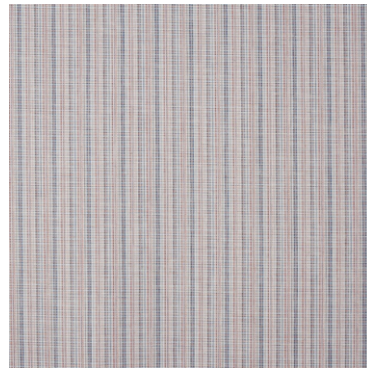
**Gabriela Verdi**



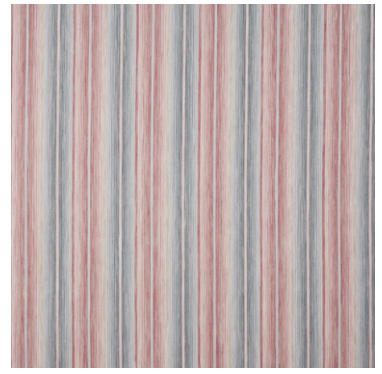
**Adriana Shell**



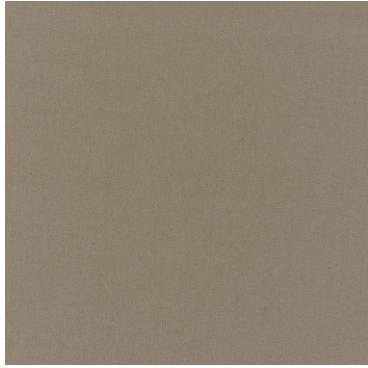
**Alessio Shell**



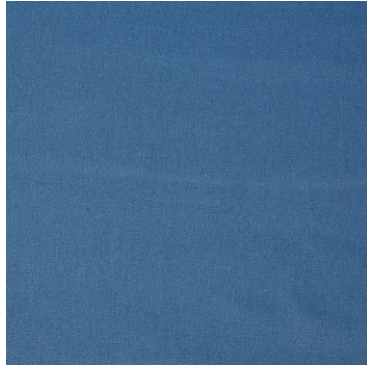
**Cici Shell**



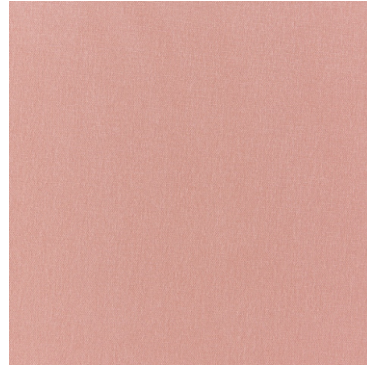
**Nico Shell**



**Style Mushroom**



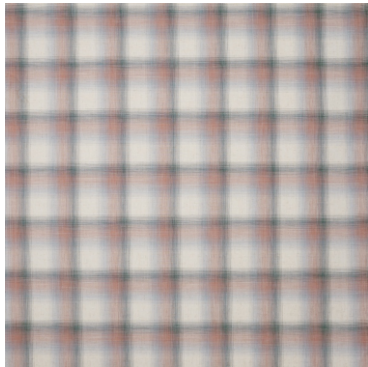
**Style Ocean**



**Style Blossom**



**Gabriela Shell**



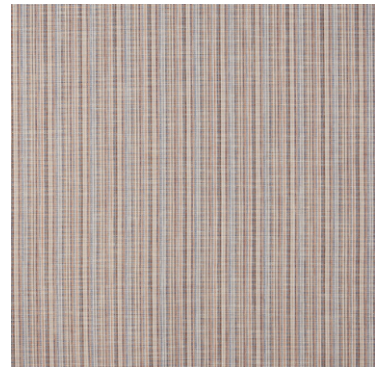
**Aldo Shell**



**Adriana Topaz**



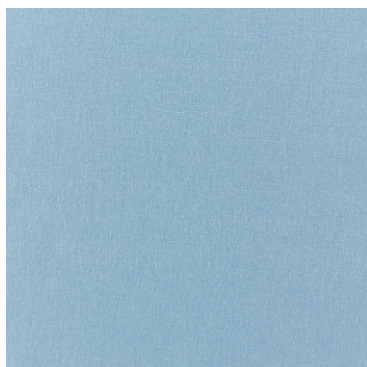
**Alessio Topaz**



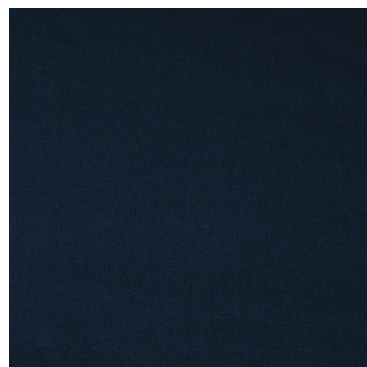
**Cici Topaz**



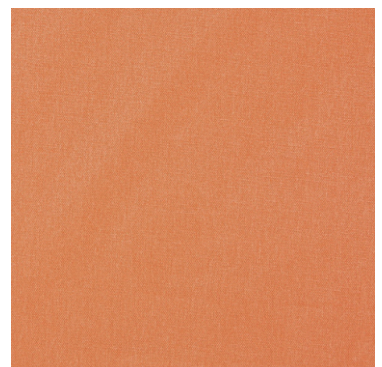
**Nico Topaz**



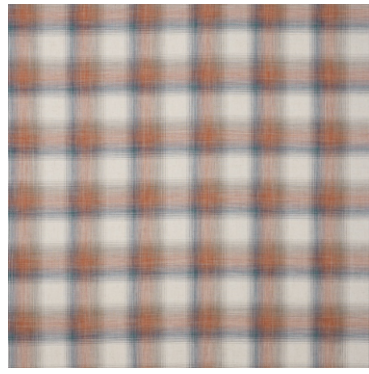
**Style Breeze**



**Style Ink**



**Style Pumpkin**

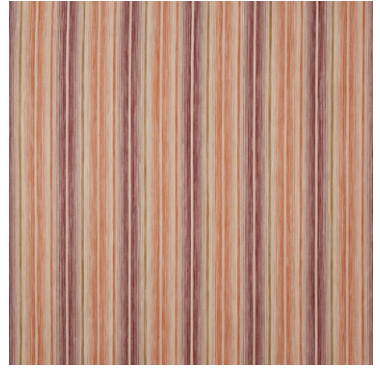
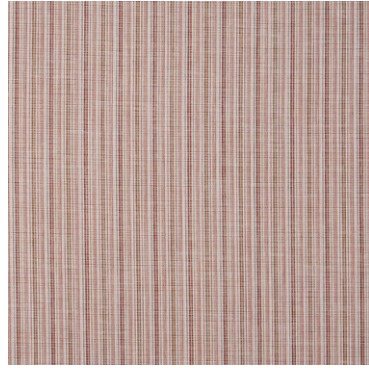
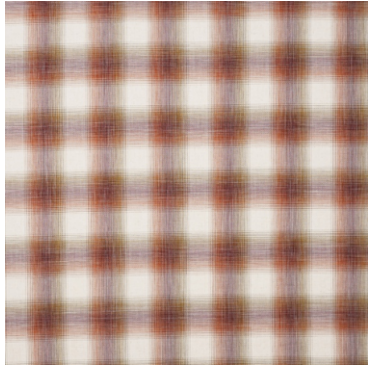


**Gabriela Topaz**

**Aldo Topaz**

**Adriana Spice**

**Alessio Spice**

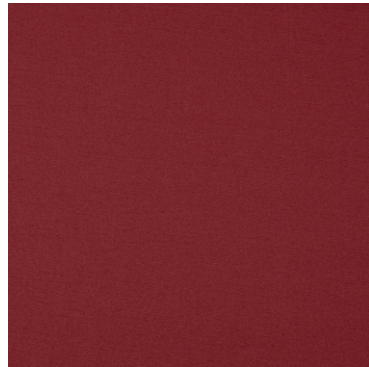
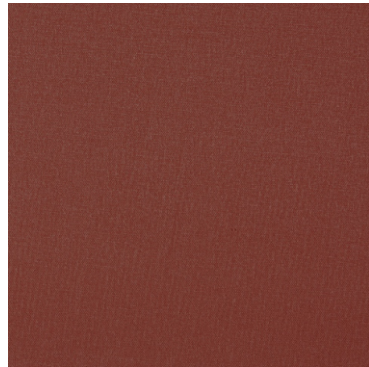
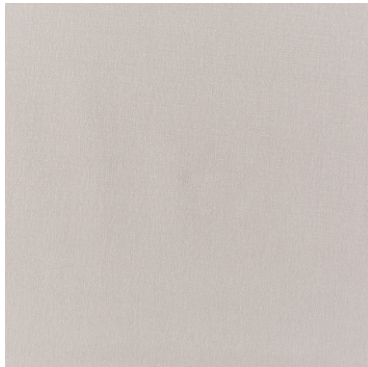


**Aldo Spice**

**Gigi Spice**

**Cici Spice**

**Nico Spice**



**Style Dove**

**Style Spice**

**Style Bordeaux**

**Gabriela Spice**

**MILAN COLLECTION DETAILS**

**Adriana (Print)**

100% Cotton  
151cm (useable 144cm)  
V: 69.2cm | H: 70.8cm  
Multi Purpose 80,000 rubs  
Oeko-Tex



**Gabriela (Print)**

100% Cotton  
151cm (useable 144cm)  
V: 39.7 drop 19.85cm | H: 94.4cm  
Multi Purpose 80,000 rubs  
Oeko-Tex



**Aldo**

88% Poly. /8% Cott. /4% Linen  
143cm (useable 140cm)  
V: 17.5cm | H: 17.5cm  
Multi Purpose 100,000 rubs



**Gigi (Print)**

100% Cotton  
151cm (useable 144cm)  
V: 70.2cm | H: 71cm  
Multi Purpose 80,000 rubs  
Oeko-Tex



**Alessio (Embroidery)**

80% Polyester /20% Cotton  
144cm (useable 134cm)  
V: 39cm | H: 44.3cm  
Curtaining & Accessories



**Nico**

88% Polyester /8% Cotton/4% Linen  
143cm (useable 139cm)  
V: Stripe | H: 34.7cm  
Multi Purpose 100,000 rubs



**Cici**

92% Poly. /5% Cott./3% Lin.  
143cm (useable 139cm)  
V: Stripe | H: 8.3cm  
Curtaining & Accessories



**Style**

100% Cotton  
145cm (useable 142cm)  
Plain  
Multi Purpose 70,000 rubs



**NOTE:**

This is a Prestigious Textiles imported collection. Orders are consolidated and airfreighted from the UK.