



**ROCKIES ~ intriguing collection of wide width sheers**

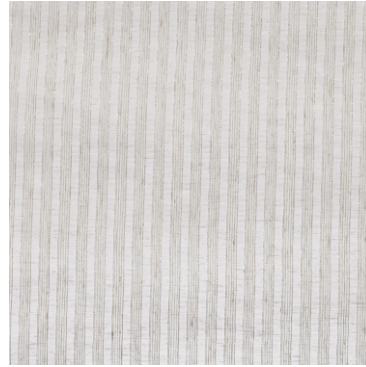
Marking a new chapter in our portfolio of sheers, Rockies incorporates a myriad of diverse techniques to create an unexpected, alluring addition to our PT Extra portfolio. Each design tells a different tale of interest, with atmospheric prints setting the scene for the intriguing techniques to follow. Abstract interpretations of natural scenes go hand-in-hand with the collection's tactile finishes, from tufted sheer finishes to contemporary stripes showcasing hints of subtle metallic running throughout. A light and delicate palette anchors the ethereal nature of Rockies, with pops of understated colour amplifying the visual interest guaranteed by the collection's striking designs.



**Whistler Straw**



**Cedar Straw**



**Quebec Linen**



**Alberta Linen**



**Banff Straw**



**Breton Vanilla**



**Toronto Linen**



**Elder Linen**



**Ottawa Linen**



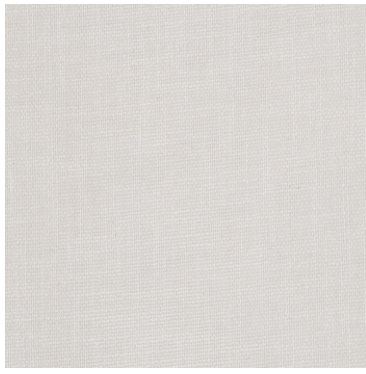
**Calgary Linen**



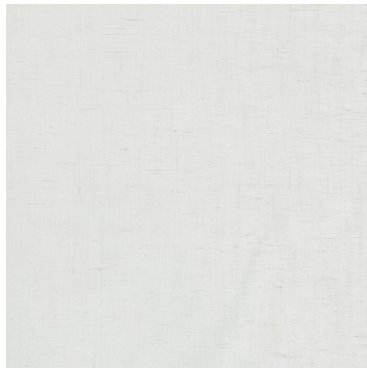
**Niagara Chalk**



**Whistler Chalk**



**Waterton Chalk**



**Ottawa Chalk**



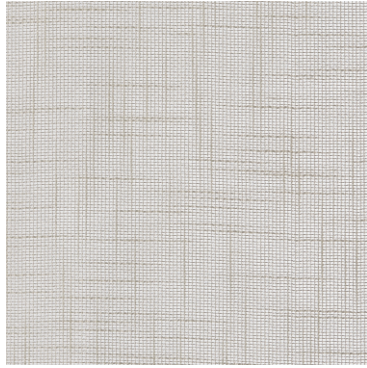
**Alberta Chalk**



**Toronto Chalk**



**Ottawa Vanilla**



**Cedar Chalk**



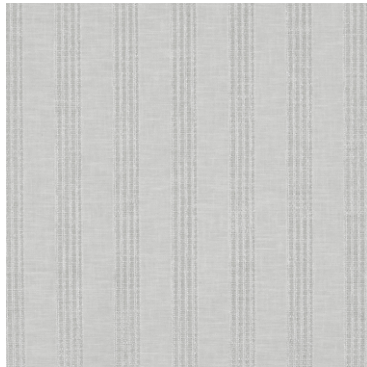
**Whistler Vanilla**



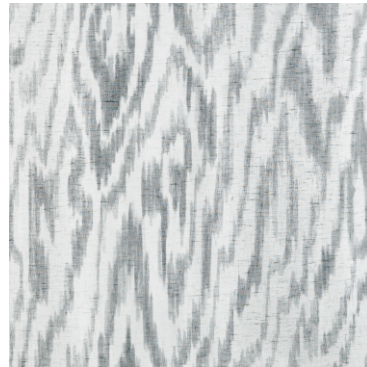
**Waterton Vanilla**



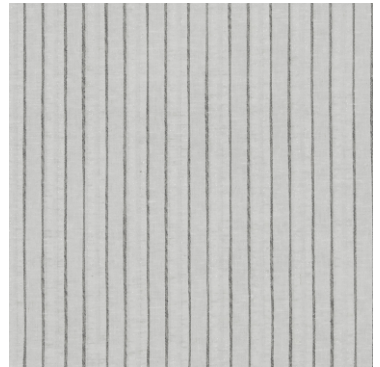
**Breton Chalk**



**Calgary Chalk**



**Montreal Silver**



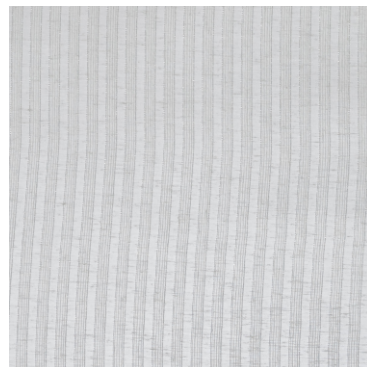
**Toronto Silver**



**Whistler Silver**



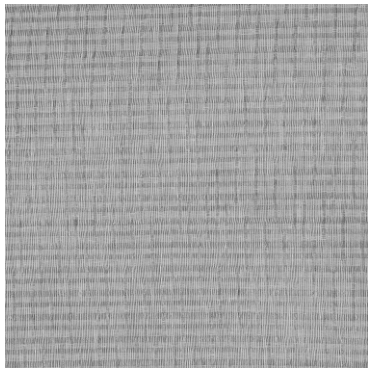
**Breton Silver**



**Quebec Chalk**



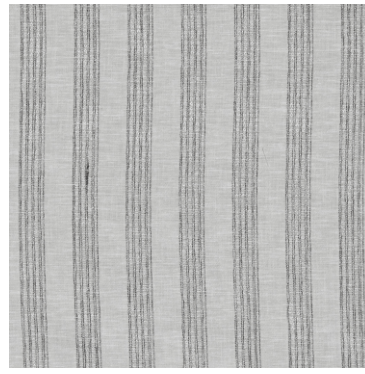
**Yoho Silver**



**Alberta Silver**



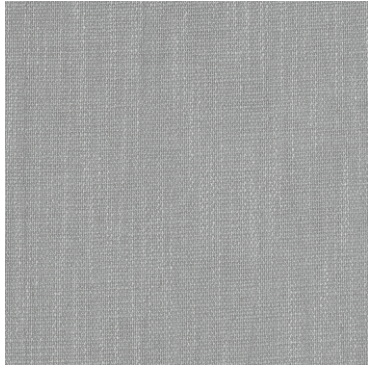
**Ottawa Silver**



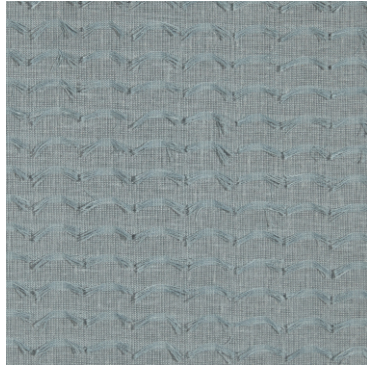
**Calgary Silver**



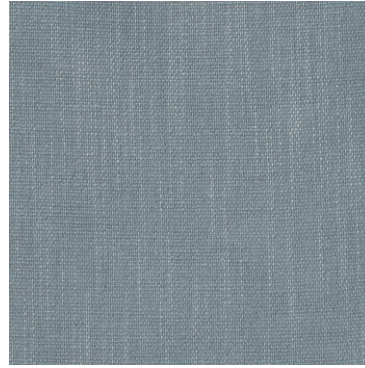
**Elder Silver**



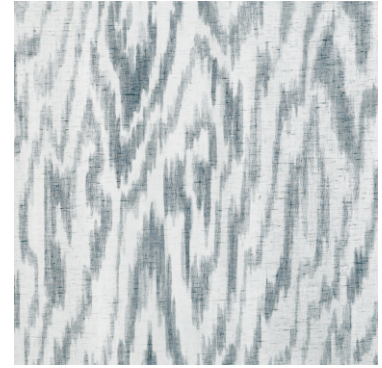
**Waterton Silver**



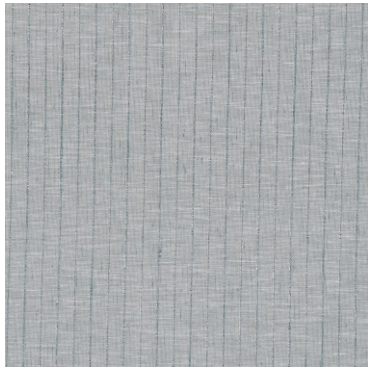
**Whistler Storm**



**Waterton Storm**



**Montreal Storm**



**Niagara Storm**



**Ottawa Storm**



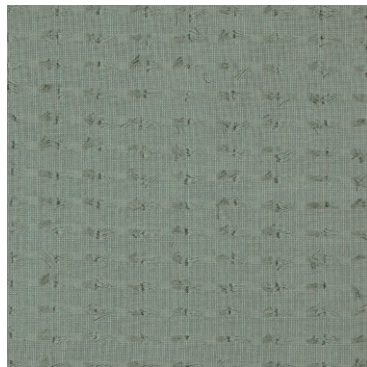
**Banff Storm**



**Breton Storm**



**Elder Apple**



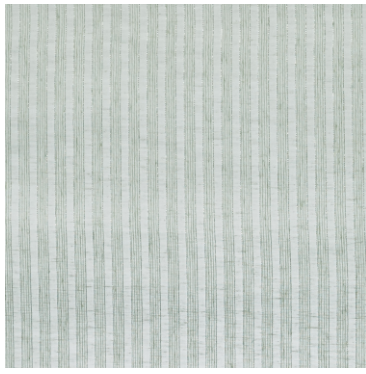
**Whistler Apple**



**Waterton Apple**



**Evergreen Apple**



**Quebec Apple**



**Cedar Apple**



**Ottawa Apple**



**Breton Apple**

**ROCKIES COLLECTION DETAILS**

**Alberta**

43% Polyester /32% Lin./25% Cott.  
306cm drop (useable 302cm)  
Random  
Curtaining  
Oeko-Tex



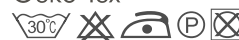
**Banff**

100% Polyester  
304cm drop (useable 300cm)  
V: 60.5cm | H: 89.7cm  
Curtaining  
Oeko-Tex



**Breton**

80% Polyester /20% Cotton  
314cm drop (useable 309cm)  
V: Stripe | H: Random  
Curtaining  
Oeko-Tex



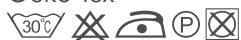
**Calgary**

52% Cotton /48% Polyester  
306cm drop (useable 302cm)  
V: Stripe | H: 4.7cm  
Curtaining  
Oeko-Tex



**Cedar**

100% Polyester  
314cm drop (useable 309cm)  
Plain  
Curtaining  
Oeko-tex



**Elder**

100% Polyester  
302cm drop (useable 298cm)  
V: 71cm | H: 136.5cm  
Curtaining  
Oeko-Tex



**Evergreen**

100% Polyester  
302cm drop (useable 298cm)  
V: 93.5cm | H: 90cm  
Curtaining  
Oeko-Tex



**Montreal**

100% Polyester  
302cm drop (useable 298cm)  
V: 62.3cm | H: 136.7cm  
Curtaining  
Oeko-Tex



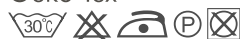
**Niagara**

59% Poly./39% Cott./2% Lin.  
308cm drop (useable 304cm)  
V: Stripe | H: 1.5cm  
Curtaining  
Oeko-Tex



**Ottawa**

100% Polyester  
304cm drop (useable 300cm)  
Plain  
Curtaining  
Oeko-Tex



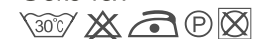
**Quebec**

100% Polyester  
310cm drop (useable 306cm)  
V: Stripe | H: 2cm  
Curtaining  
Oeko-Tex



**Toronto**

89% Poly./7% Cott./4% Lin.  
306cm drop (useable 302cm)  
V: Stripe | H: 4cm  
Curtaining  
Oeko-Tex



**Waterton**

58% Poly./36% Cott./6% Lin.  
306cm drop (useable 302cm)  
Plain  
Curtaining  
Oeko-Tex



**Whistler**

42% Visc. /32% Cott. / 26% Poly.  
312cm drop (useable 308cm)  
Random  
Curtaining  
Oeko-Tex



**Yoho**

100% Polyester  
302cm drop (useable 298cm)  
V: 66cm | H: 68cm  
Curtaining  
Oeko-Tex



NOTE: These wide sheers are to be used width to length



STANDARD 100

