



SRI LANKA ~ jacobean florals & stylized trees

Inspired by the original tropical landscapes and vibrant culture of Sri Lanka, the linen-look collection of Jacobean florals and stylised trees is bursting with colour and style. Featuring painterly textures and intricate embroideries, the collection incorporates stunning Jacobeans, ornate damasks and a complementary mosaic tile, for truly captivating interiors. Rich hues of emerald, gold and navy, Sri Lanka is rich in pattern and colour for uplifting home décor.



Kamala Amber



Tiana Amber



Salina Amber



Tree Of Life Amber



Tiana Linen



Kailani Amber



Summer Fruits Amber



Kamala Orchid



Summer Fruits Lichen



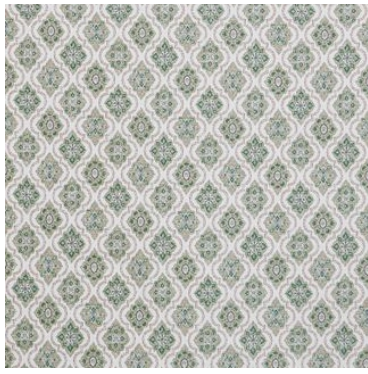
Tiana Lichen



Kailani Orchid



Tree Of Life Orchid



Salini Lichen



Kamala Lichen



Tree Of Life Tiger Lily



Summer Fruits Tiger Lily



Kailani Tiger Lily



Tiana Tiger Lily



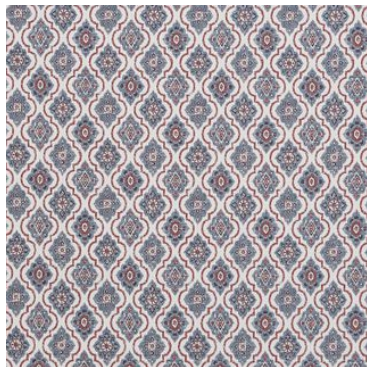
Kamala Tiger Lily



Kailani Paprika



Summer Fruits Indigo



Salina Indigo



Tree Of Life Paprika



Tiana Indigo



Kamala Indigo



SRI LANKA COLLECTION DETAILS

Kailani

45% Cott/32% Visc/23% Lin
144cm (useable 140cm)
V: 67.3cm | H: Full Width
Multi purpose 50,000 rubs
☑️☒️☑️☑️☒️

Kamala

45% Cott/32% Visc/23% Lin
143cm (useable 139cm)
V: 62.3cm | H: 34.4cm
Multi purpose 50,000 rubs
☑️☒️☑️☑️☒️

Salina (Embroidery)

79% Polyester/21% Cotton
141cm (useable 139cm)
V: 17.5cm | H: 17cm
Curtaining & Accessories
☑️☒️☑️☑️☒️

Summer Fruits (Embroidery)

61% Polyester/39% Cotton
142cm (useable 131cm)
V: 77.5cm | H: 64cm
Curtaining & Accessories
Dry Clean Only

Tiana

75% Polyester/25% Cotton
138cm (useable 137cm)
V: 98.5cm | H: 34.5cm
Curtaining & Accessories
☑️☒️☑️☑️☒️

Tree Of Life (Embroidery)

79% Cotton/21% Acrylic
151cm (useable 141cm)
V: 77.6cm | H: Full Width
Curtaining & Accessories
Dry Clean Only

