

Volume





Dynamic duo of cut velvet designs

Introduce your space to the depth and luxury of Volume. A dynamic duo of cut velvet designs give a nod to the iconic Art Deco era, with the collection's embossed effect guaranteeing true decadence. A palette of jewel tones, spanning vibrant teals and emerald greens to warming copper shades, enhances the opulence created by the collection's tactile finishes. Complement curved furniture, accessories, and gold finishes with Volume's rich, cocooning tones for a truly indulgent space.



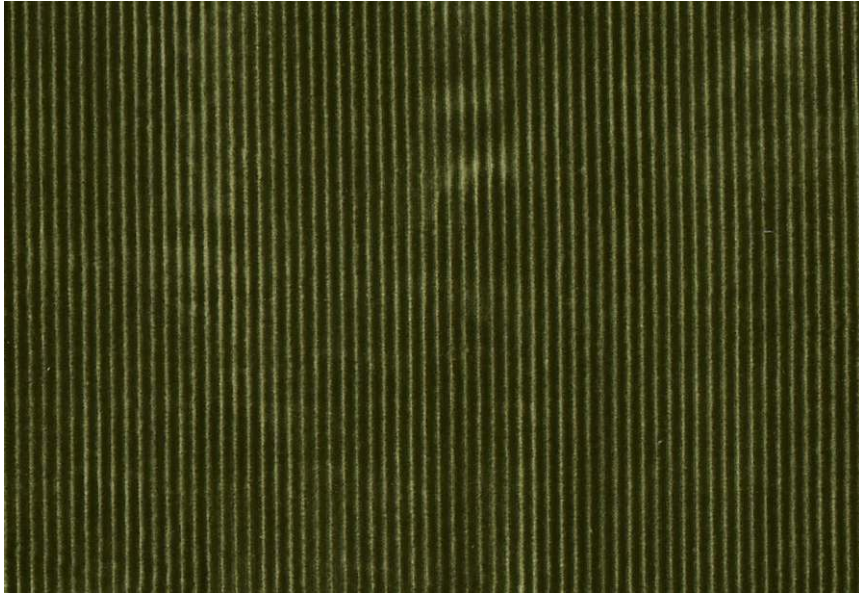
STANDARD
100

Drawing inspiration from the Art Deco era Volume introduces depth and luxury through two bold designs with an opulent tactile finish.



Helix

Sophisticated wide Wale Corduroy with a rich and glamorous pile.



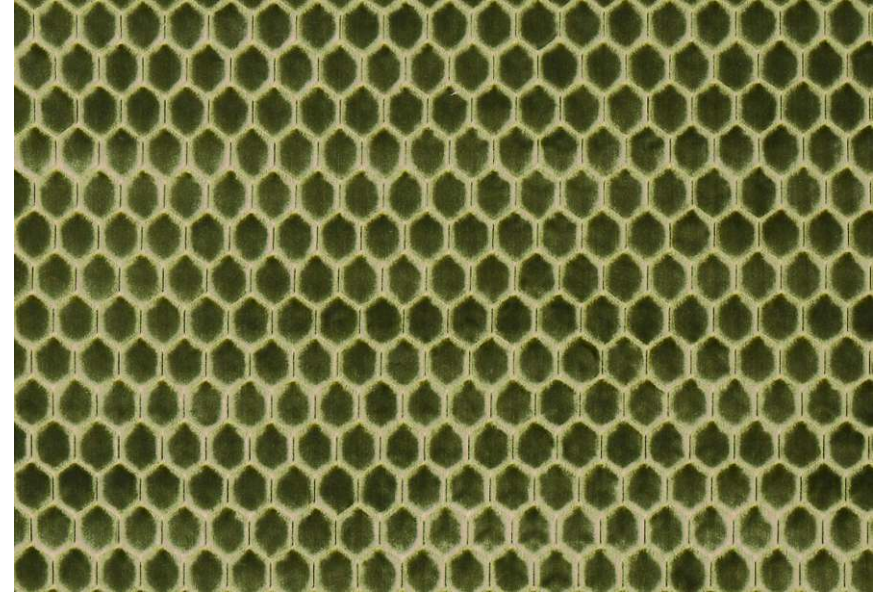
100% Polyester
142cm (usable 137cm)
V: Stripe | H: 1cm
Multi Purpose 100,000+ rubs
Unbacked

(Do not steam, Iron on reverse)



Prism

This stylish Hexagon will make a statement in any interior giving it a deluxe look.

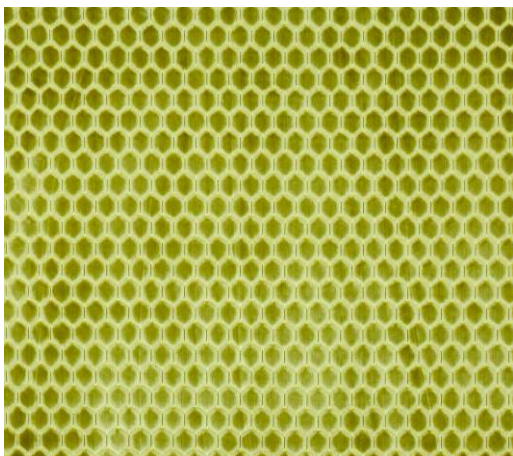
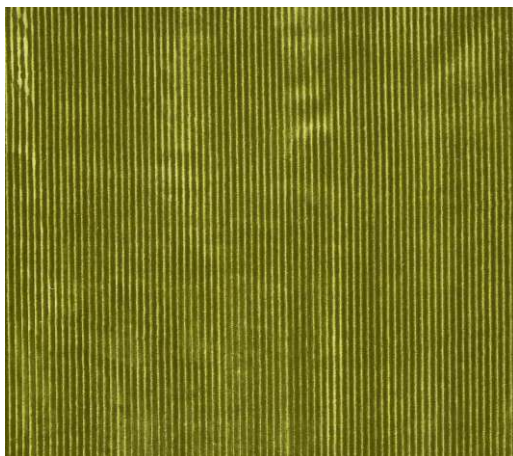
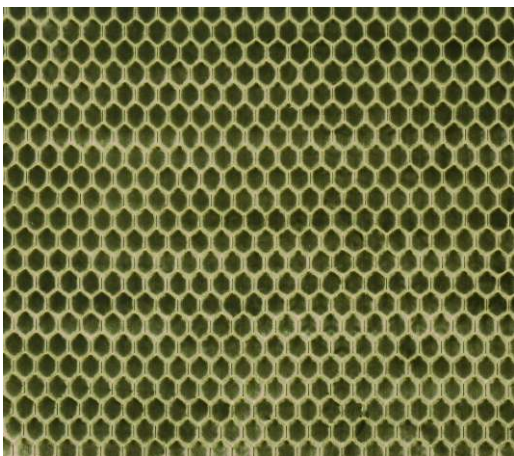
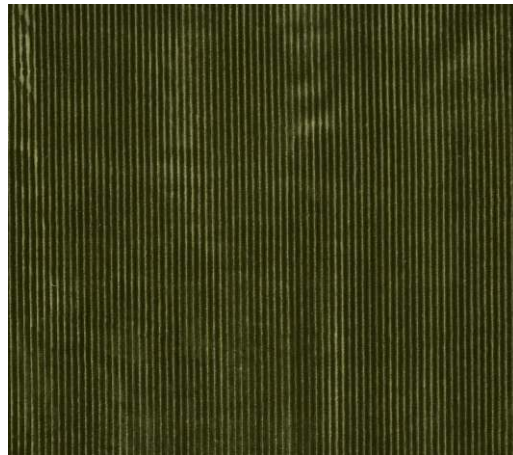
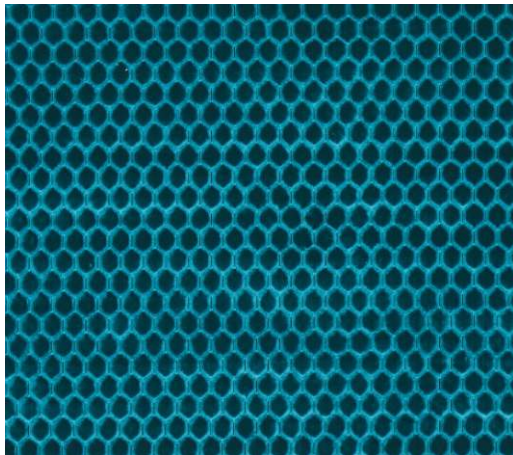
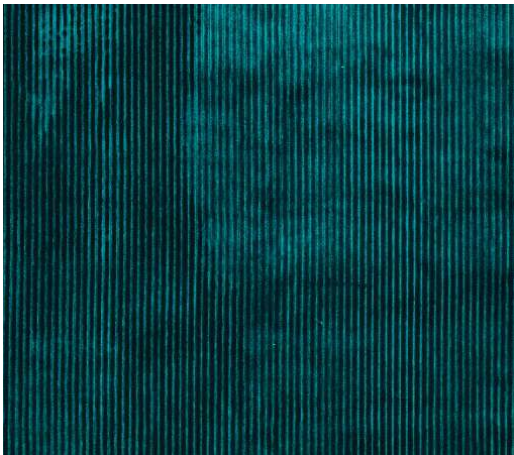


100% Polyester
142cm (usable 137cm)
V: 6.5cm | H: 3.5cm
Multi Purpose 100,000+ rubs
Unbacked

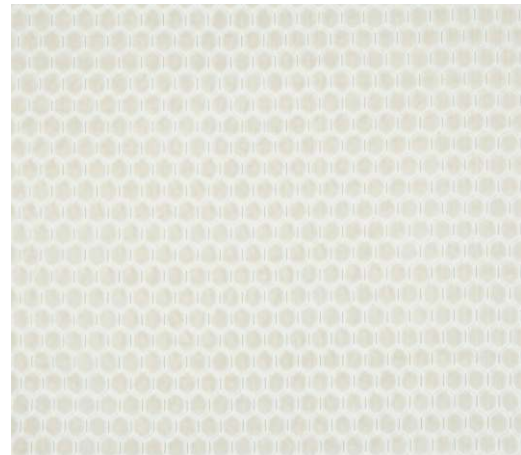
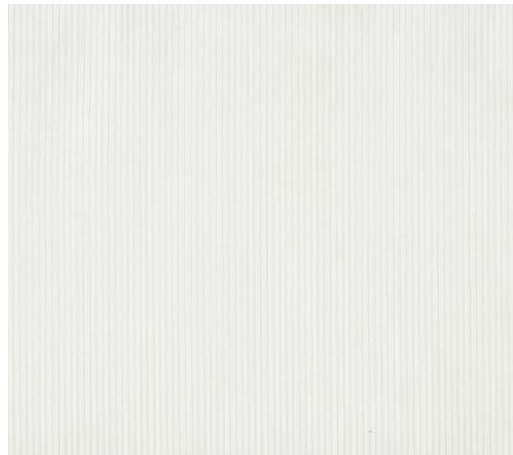
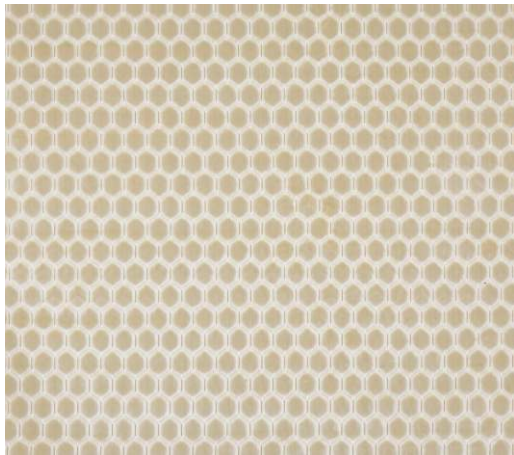
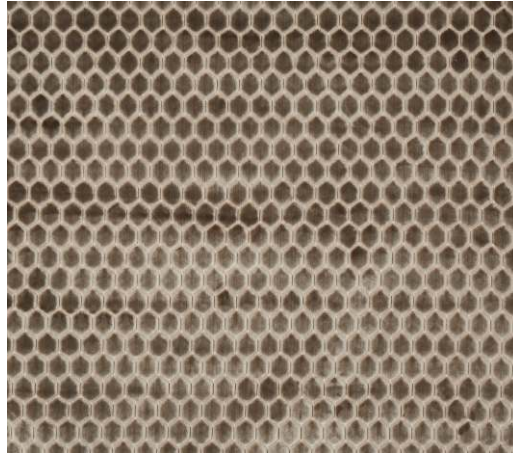
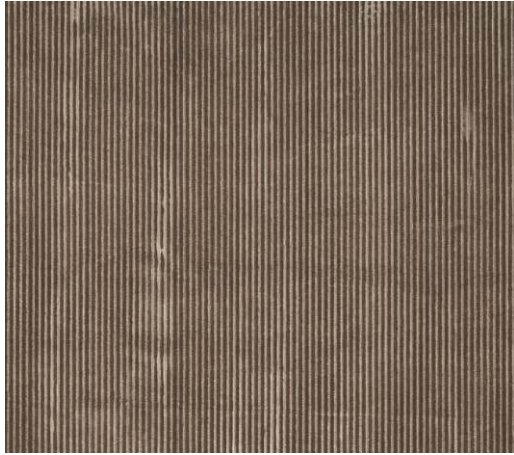
(Do not steam, Iron on reverse)



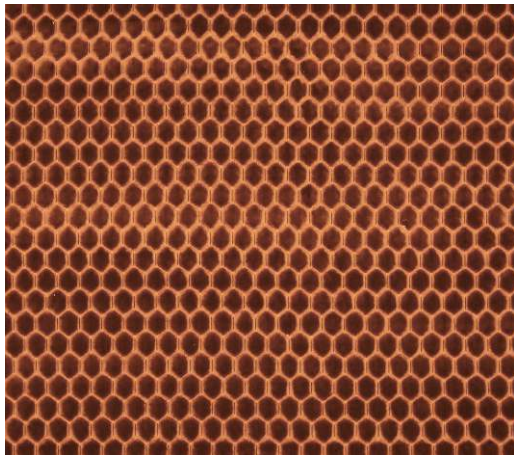
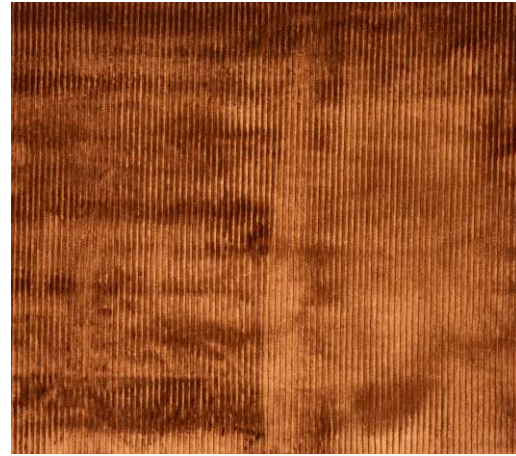
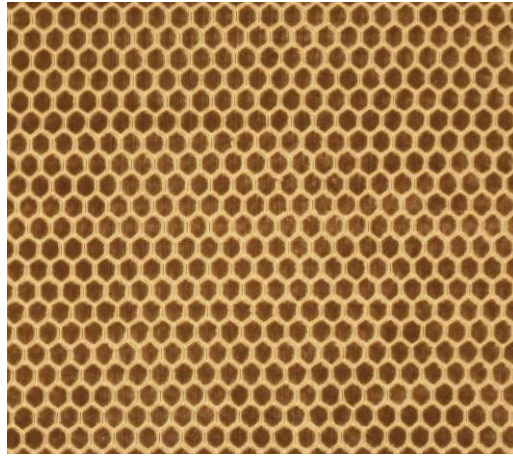
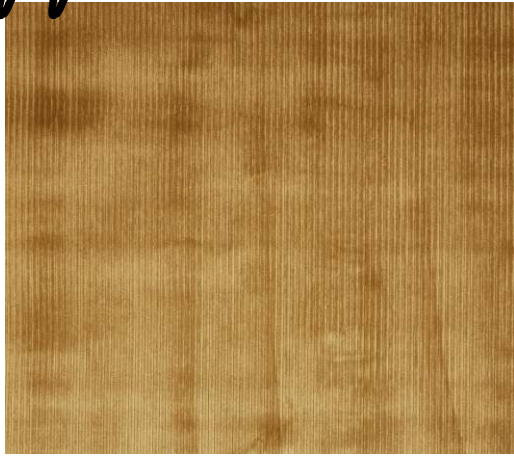
Jewel Tones



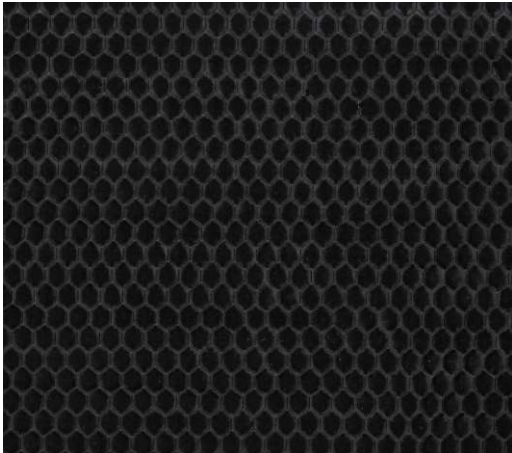
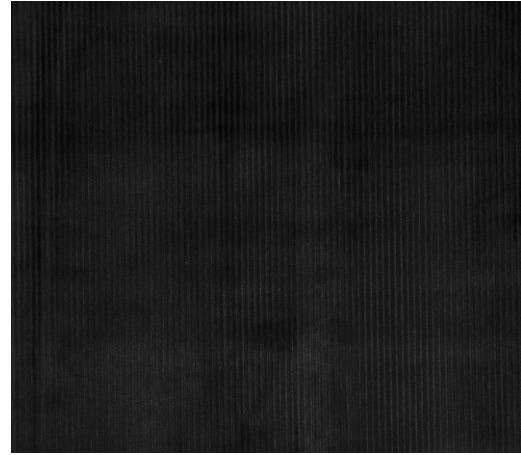
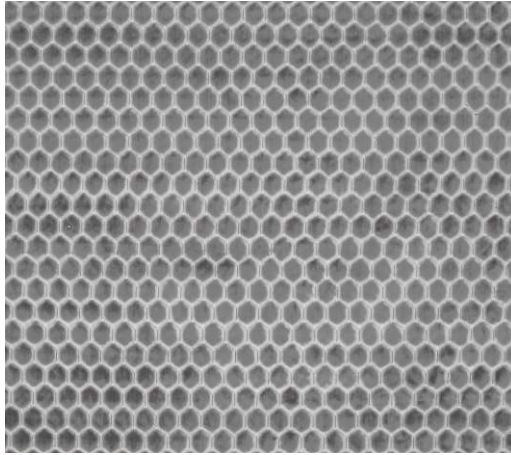
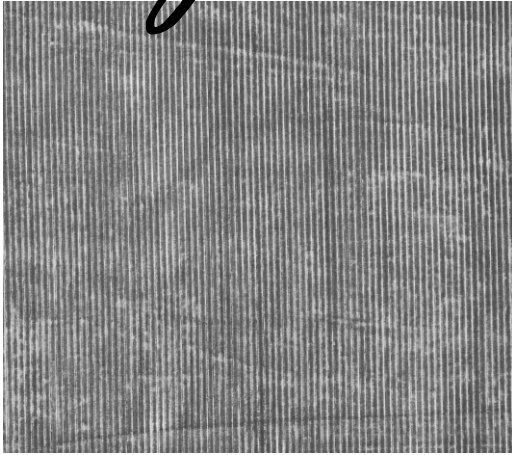
Neutrals



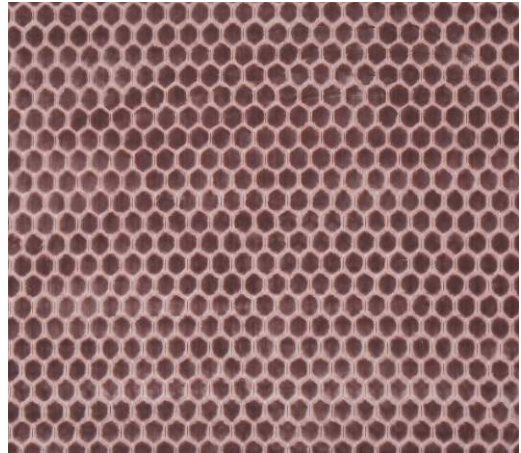
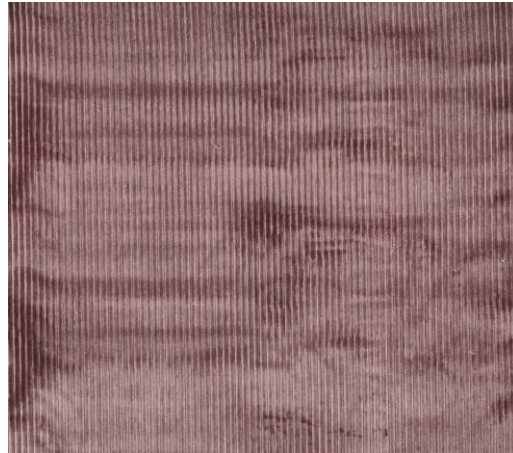
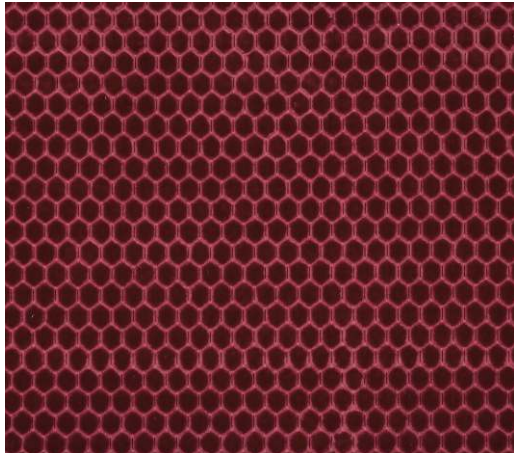
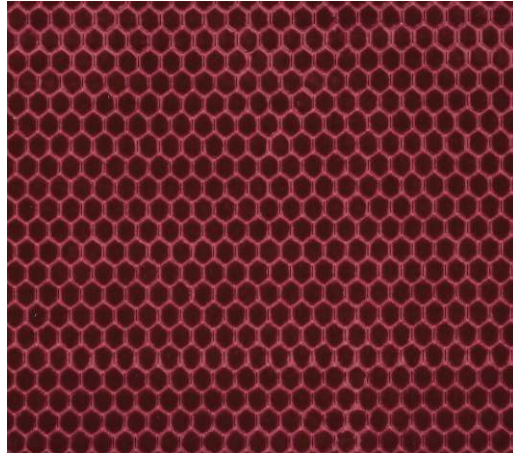
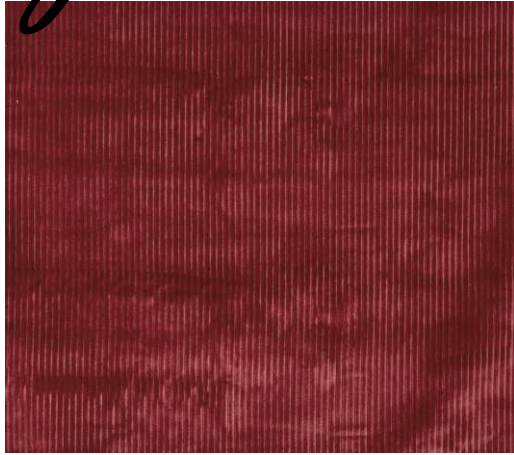
Coppers



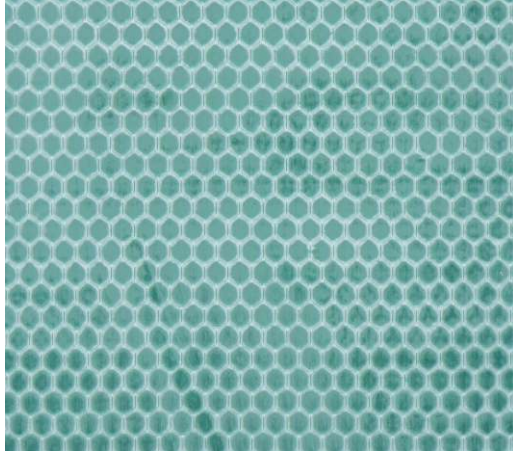
Moody Hues



Ruby Reds



Sky Blue



CONTACT US

WEB: www.stuartgraham.co.za

EMAIL: imports@stuartgraham.co.za

ADDRESS: 1 Sidon Street, North End, Port Elizabeth

