

# Catalogue

## Ready Made Curtains



## STUART GRAHAM READY MADE CURTAINS

### *Premium Style Curtains*

Our ready made curtains are an instant, stylish and cost effective solution when decorating your windows.

While we all enjoy the outdoors, we don't necessarily need the glare from the sunlight interfering with our lifestyle.

Whether your aim is to lower the general light level, provide privacy or simply create a cosy atmosphere, our ready to hang curtains are the perfect choice.

We offer a variety of exclusive designs created for simple yet attractive curtains, with an easy to live with colour palette to suit most décor schemes.

Textured weaves, prints and sheer designs are available in standard and extra length, in eyelet and regular tape headings.

For your suitability we include lined, unlined, sheer and blackout solutions.

Each design and style option carries its own unique benefits.

Standard length curtains suit most homes where standard window and door frames are used. In many modern homes higher ceiling and window heights require extra length curtains.

Eyelet curtains - modern, simple, stylish.

Quick and easy to hang directly onto a curtain rod.

We make use of stainless steel 40mm eyelets.

Available in standard length (220cm) and extra length (252cm).

Tape curtains - versatile attractive style.

Gathers neatly and can be hung on regular curtain tracks, with pelmets, rebated or clip-on rods.

Available in standard length (218cm) and extra length (250cm).

Woven pocket tape ensures a neat pleat that gathers easily to the desired width.

3 pocket levels allow for small adjustments in the height of the curtains.

Wave curtains - minimalistic modern style.

The curtains are guided seemingly invisibly along a slim, discreet track.

Curtains fold into relaxed waves to create a contemporary look in any home.

Available in standard length (218cm) and extra length (250cm).

Sheer curtains are translucent and allow light to enter the room while still providing some degree of privacy and basic level of UV protection.

These are ideal for layered window solutions when used together with blackout or blockout curtains.

Sheer curtains can also be lined to enhance the texture and weave of the curtain.

Lining improves privacy, UV protection and insulation levels.

Blackout and blackout lining options can be used when more light reduction is required. These types of fabrics are beneficial for privacy, UV protection, insulation and reduction in noise levels.

stuart graham  
ready makes

January 2026

# Taped Curtains - versatile, attractive style



  
stuart graham  
Ready Mades

Featuring - design Woodstock Mist

# Taped Curtains



## **PRODUCT INFO & BENEFITS**

Curtains with tape headings are versatile and cost effective.

Available in standard length (218cm) and extra length (250cm).

Standard length suits most homes where standard window and door frames are used, while extra length can be used where higher ceilings require longer length curtains.

Our 3 string woven pocket tape is a superior quality heading tape.

The strings pull easily to create a very neat pleat, improving the overall look of the ready made.

Woven pockets allow curtain hooks to be added quickly and easily.

Tape headings allow the installer to gather the curtain to the desired fullness.

Curtain hooks can be fitted to any of the 3 woven pocket levels to accommodate slight height variances, without having to alter the curtain. Adjustments of 2-5cm can be accommodated.

Taped curtains can be used on regular curtains tracks, with pelmets, rebated or clip-on rods.

Make use of the top row of pockets when using rebated or clip-on rods to allow the curtain to hang below the rod and glide easily.



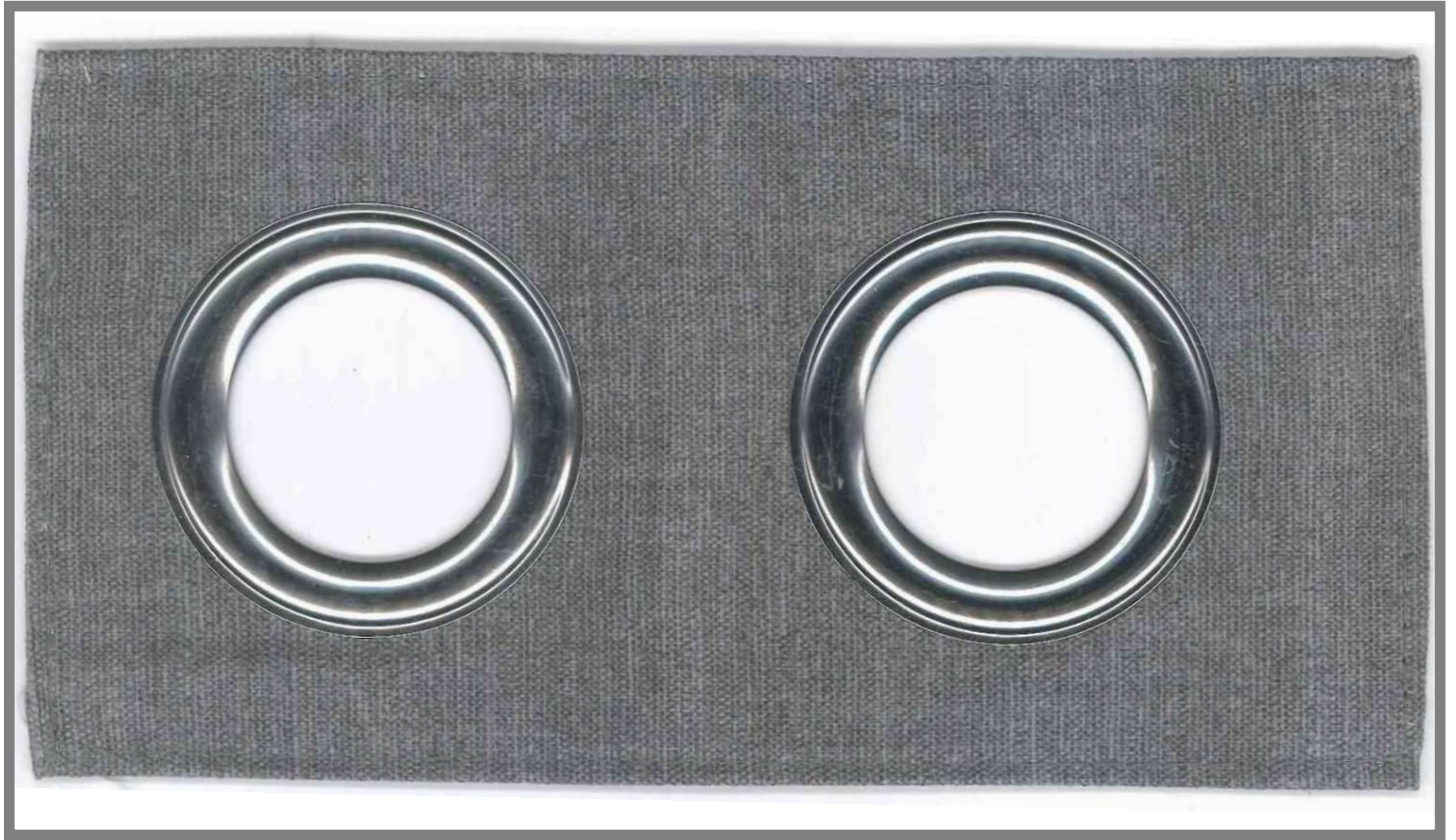
stuart graham  
Ready Mades

# Eyelet Curtains - *simple, stylish, elegant*



Featuring - Willow Silvery

# Eyelet Curtains



## PRODUCT INFO & BENEFITS

Curtains with eyelet headings provide a modern look and are conveniently quick and easy to hang.

We make use of stainless steel 40mm eyelets.

Eyelet curtains create a neat look whether the curtains are stacked, partially or fully open.

These can be hung directly onto any curtain rod fixture and glide easily on the rod.

Curtains can be drawn quickly and easily when privacy is required.

We offer a standard drop (220cm) as well as an extra length (252cm) to accommodate your window and/or ceiling height.



stuart graham  
Ready Mades

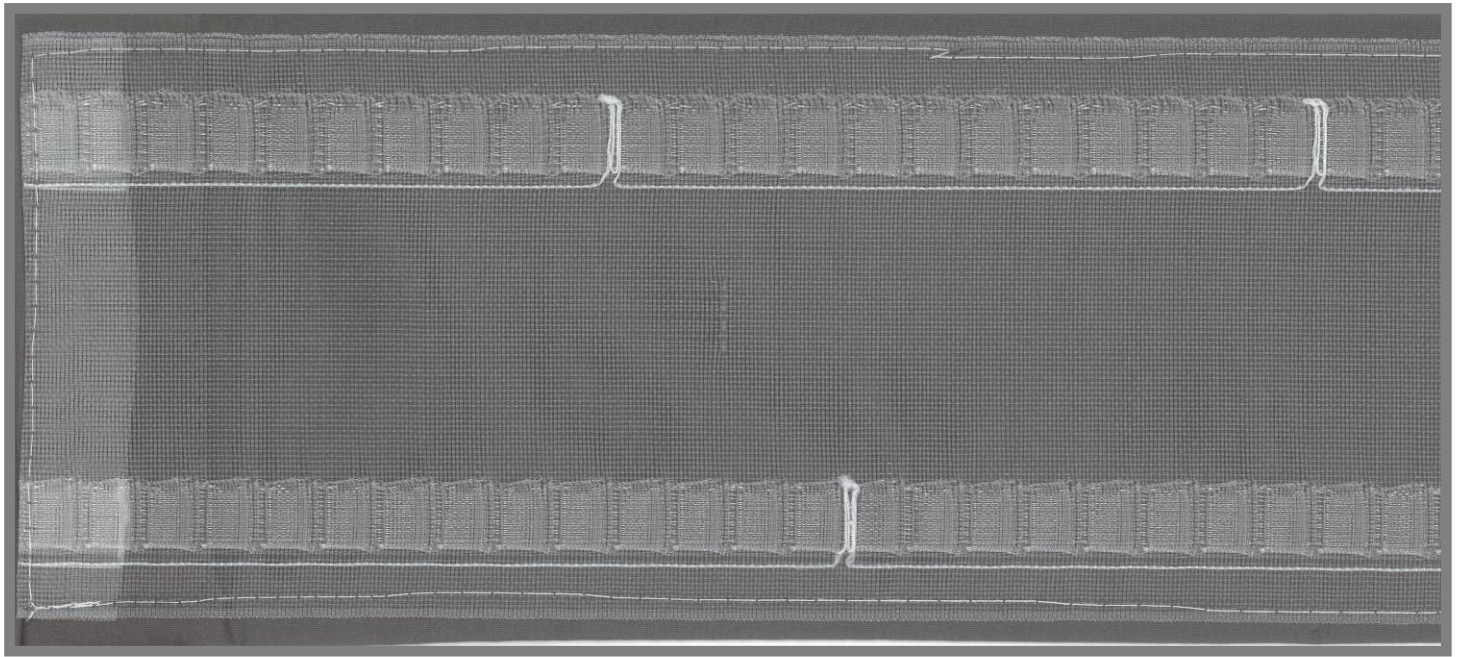
# Wave Curtains - *minimalistic modern style*



stuart graham  
Ready Mades

Featuring - Aerial White

# Wave Curtains



## **PRODUCT INFO & BENEFITS**

Curtains with wave tape headings suit the modern contemporary home and create a minimalistic, uncluttered look. The curtain is guided seemingly invisibly along a special track to create a uniform wave effect.

Wave curtains need to be hung on a special track with gliders.

Curtains hang neatly in waves whether drawn or open.

We offer a standard drop (218cm) as well as an extra length (250cm) to accommodate your window and/or ceiling height.

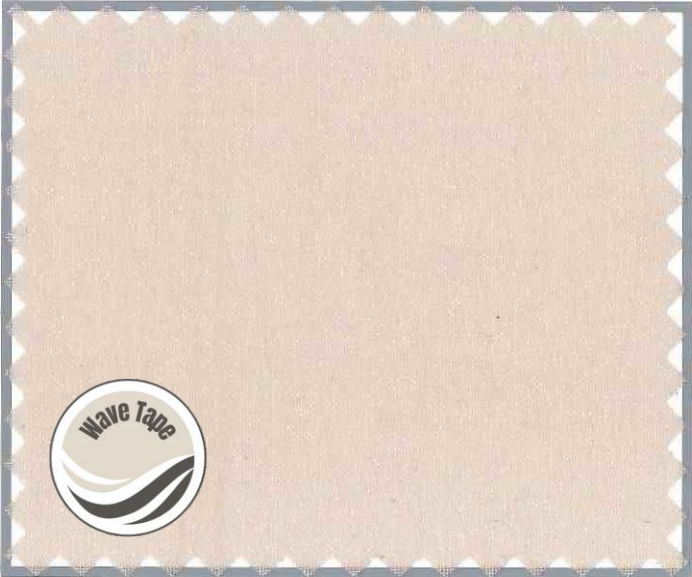


stuart graham  
Ready Mades

# Aerial - *unlined sheer*



Ice



Stone



Urchin \*to be discontinued - check stock



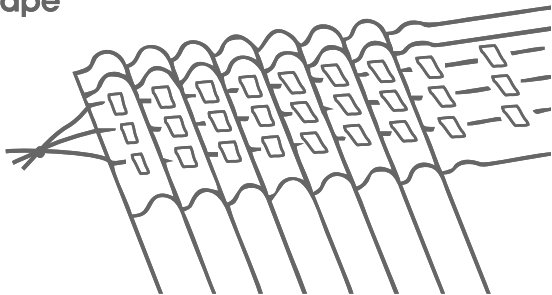
Fog



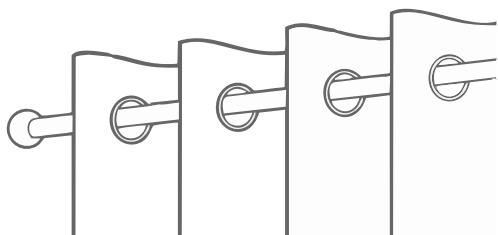
Steel

# Aerial - *unlined sheer*

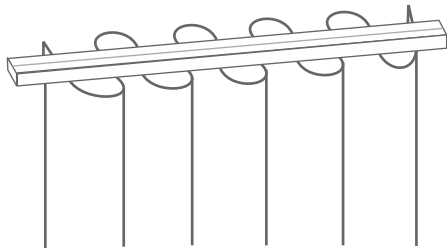
## Tape



## Eyelet



## Wave



### AVAILABLE COLOURS

- Ice
- Stone
- Urchin
- Fog
- Steel

*Wave available in selected colours - please enquire*

### PRODUCT INFO

100% Polyester

### WASH CARE INSTRUCTIONS

- Handwash or dry clean
- Line dry
- Cool iron
- Do not bleach
- Do not tumble dry

### AVAILABLE SIZES - TAPE

- 285 x 218cm - standard tape unlined
- 285 x 250cm - standard tape unlined
- 500 x 218cm - standard tape unlined
- 500 x 250cm - standard tape unlined

### AVAILABLE SIZES - EYELETS

- 285 x 220cm - eyelets unlined *(18 eyelets per curtain)*
- 285 x 252cm - eyelets unlined *(18 eyelets per curtain)*

### AVAILABLE SIZES - WAVE

- 285 x 218cm - wave tape unlined
- 285 x 250cm - wave tape unlined

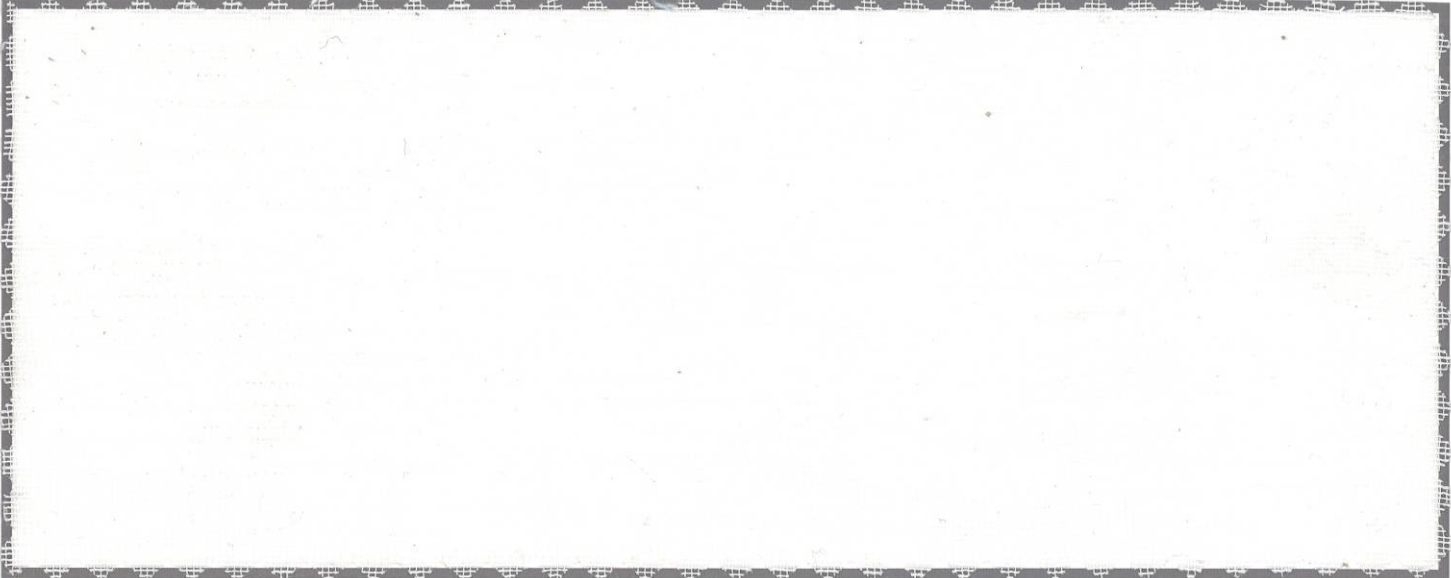
### STUART GRAHAM FABRIC REFERENCE

- Storm Ice
- Storm Stone
- Storm Urchin
- Storm Fog
- Storm Steel



stuart graham  
Ready Mades

Tranquil - *unlined sheer*



Chalk



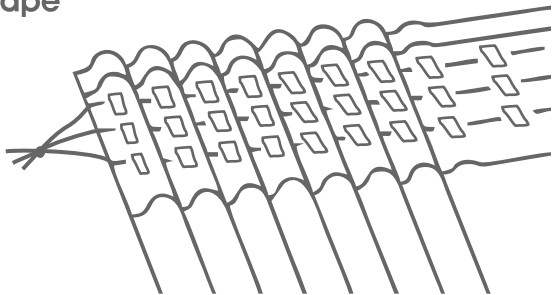
Natural



Plaster

# Tranquil - *unlined sheer*

## Tape



## AVAILABLE SIZES - TAPE

300 x 218cm - standard tape unlined

300 x 250cm - standard tape unlined

500 x 218cm - standard tape unlined

500 x 250cm - standard tape unlined

## AVAILABLE COLOURS

- Chalk
- Natural
- Plaster

## STUART GRAHAM FABRIC REFERENCE

- Breeze Chalk
- Breeze Natural
- Breeze Plaster

## PRODUCT INFO

100% Polyester  
Unlined

## WASH CARE INSTRUCTIONS

Cool wash or  
Dry clean professionally  
Cool iron  
Do not tumble dry  
Do not bleach



stuart graham  
Ready Mades

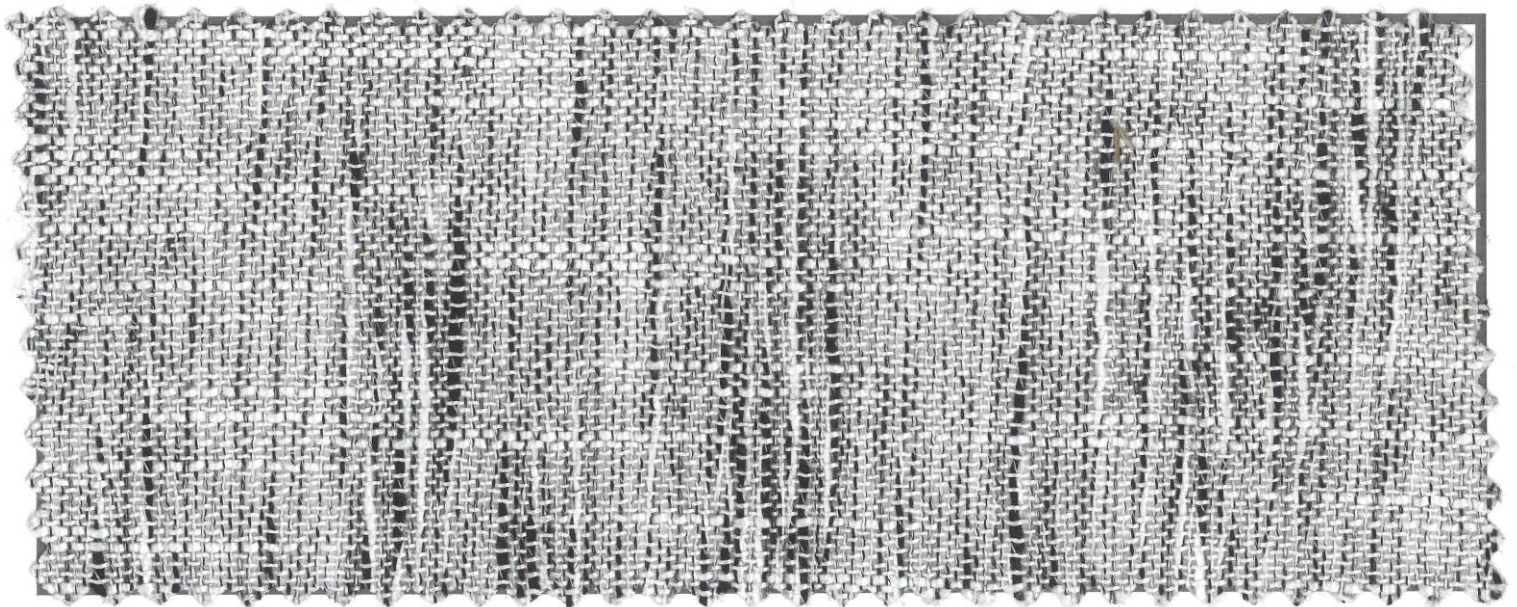
# Boutique - *unlined sheer*



Khaki



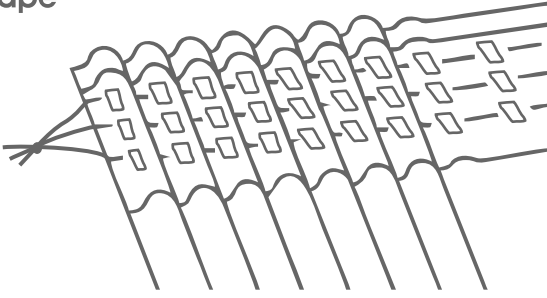
Smoke



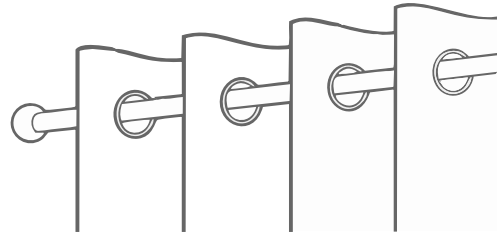
Pepper

# Boutique - *unlined sheer*

## Tape



## Eyelet



### AVAILABLE SIZES - TAPE

- 285 x 218cm - standard tape unlined
- 285 x 250cm - standard tape unlined

### AVAILABLE SIZES - EYELETS

- 265 x 220cm - eyelets unlined (16 eyelets per curtain)
- 265 x 252cm - eyelets unlined (16 eyelets per curtain)

### AVAILABLE COLOURS

- Khaki
- Pepper
- Smoke

### STUART GRAHAM FABRIC REFERENCE

- Awake Khaki
- Awake Pepper
- Awake Smoke

### PRODUCT INFO

100% Polyester  
Unlined

### WASH CARE INSTRUCTIONS

Handwash  
Line drip dry  
Do not tumble dry  
Do not dry clean  
Cool iron

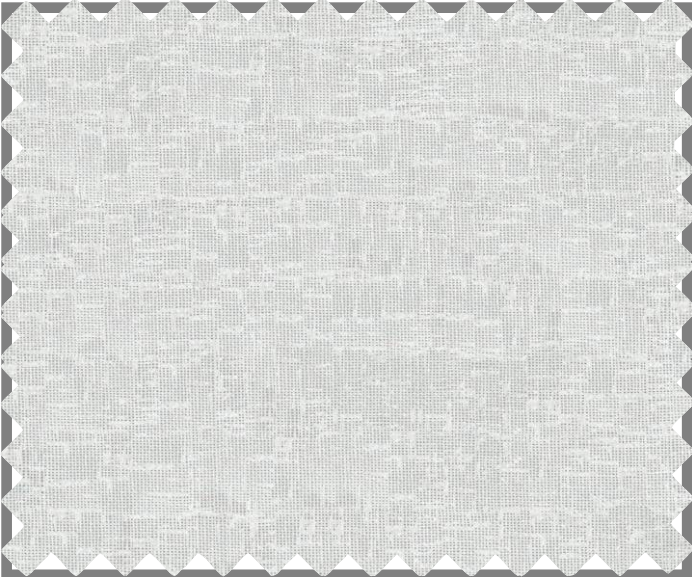


stuart graham  
Ready Mades

Answer - *textured sheer*



White



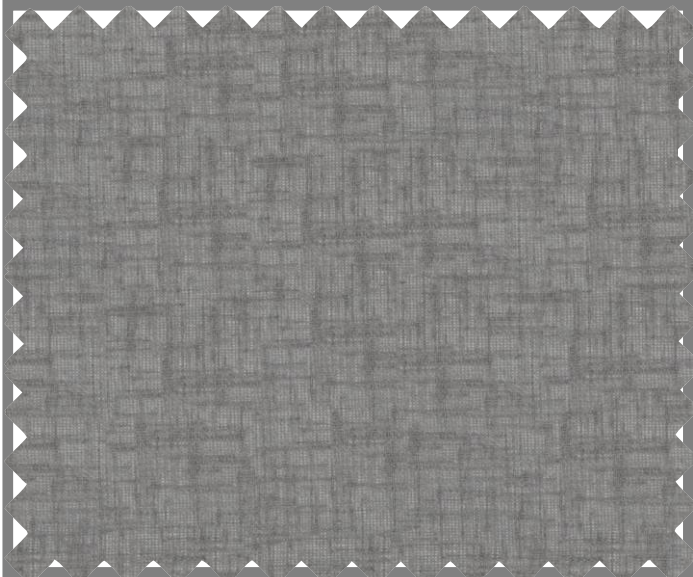
Ash



Camel



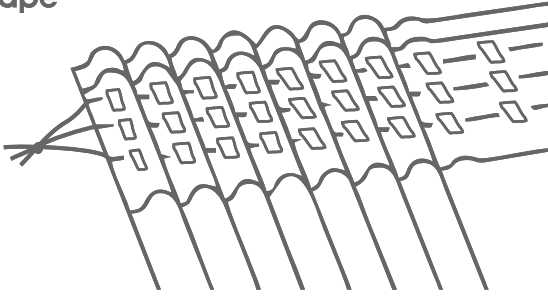
Biscuit



Pewter

# Answer - *textured sheer*

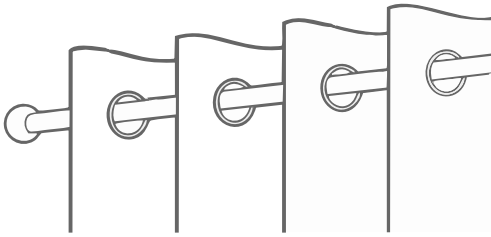
## Tape



## AVAILABLE SIZES - TAPE

- 285 x 218cm - standard tape lined
- 285 x 250cm - standard tape lined
- 285 x 218cm - standard tape unlined
- 285 x 250cm - standard tape unlined

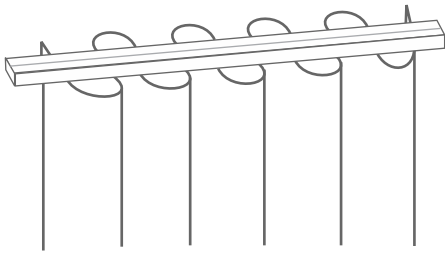
## Eyelet



## AVAILABLE SIZES - EYELETS

- 265 x 220cm - eyelets unlined *(16 eyelets per curtain)*
- 265 x 252cm - eyelets unlined *(16 eyelets per curtain)*

## Wave



## AVAILABLE SIZES - WAVE

- 285 x 218cm - wave tape lined
- 285 x 250cm - wave tape lined

## AVAILABLE COLOURS

- White
- Biscuit
- Stone
- Ash
- Pewter

## STUART GRAHAM FABRIC REFERENCE

- Answer White
- Answer Biscuit
- Answer Stone
- Answer Ash
- Answer Pewter

## PRODUCT INFO

100% Polyester

## WASH CARE INSTRUCTIONS

- Wash 30 degrees or dry clean
- Cool iron
- Do not bleach
- Do not tumble dry

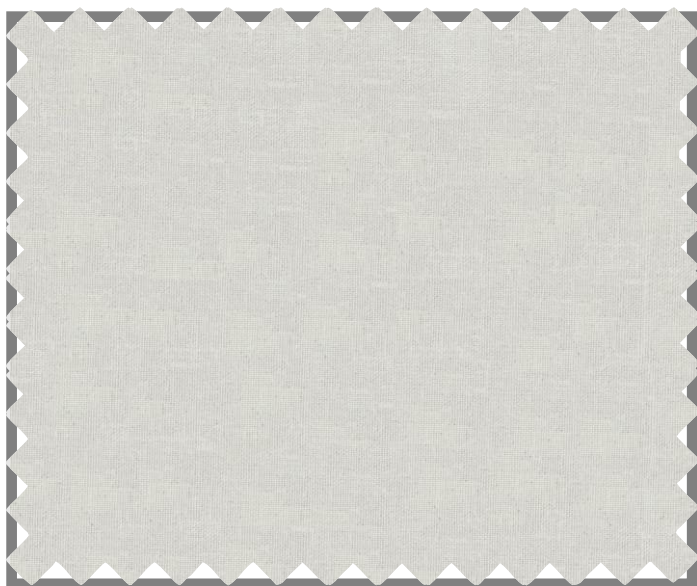


stuart graham  
Ready Mades

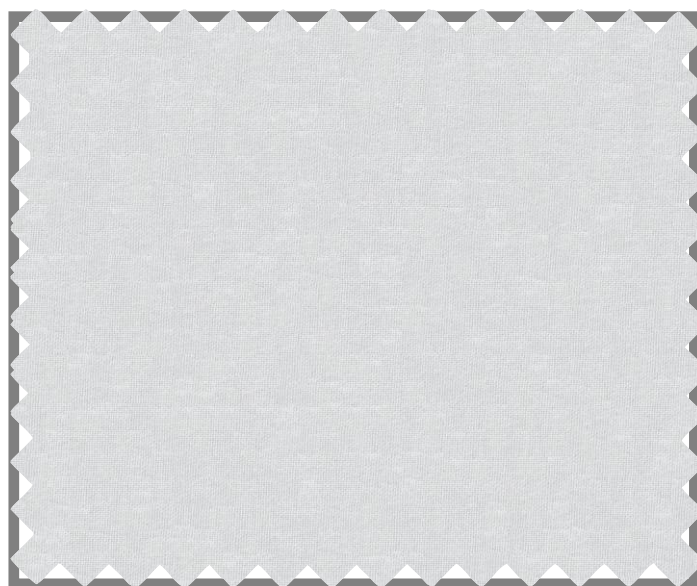
# Reply - *textured sheer*



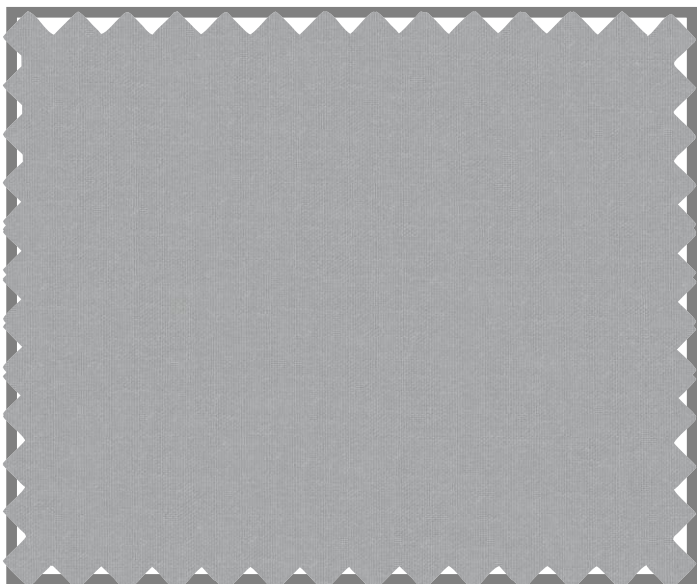
White



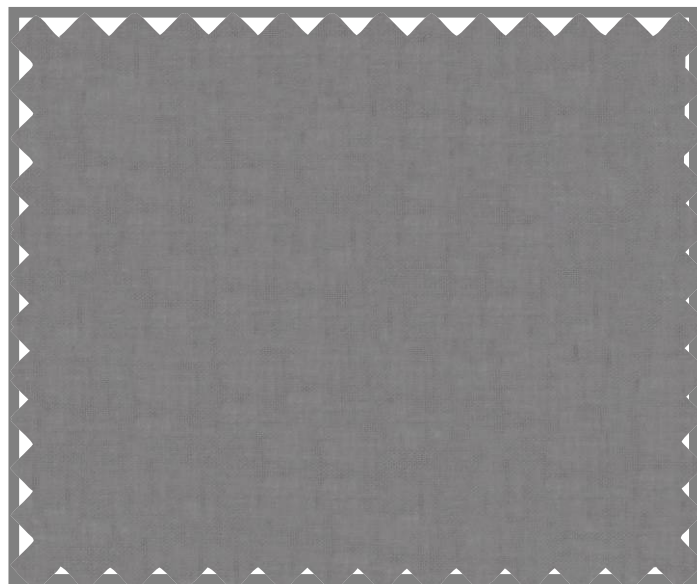
Almond



Mist



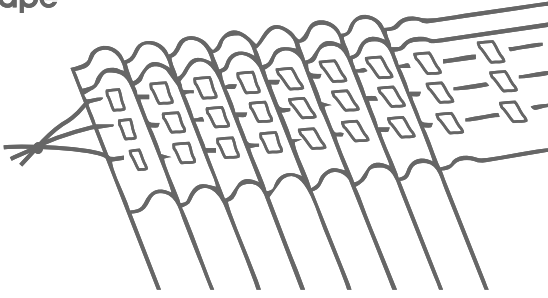
Smoke



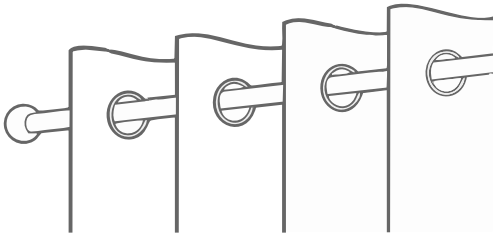
Iron

# Reply - textured sheer

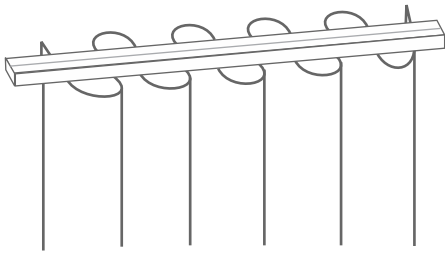
## Tape



## Eyelet



## Wave



## AVAILABLE COLOURS

- Almond
- Iron
- Mist
- Smoke
- White

## PRODUCT INFO

100% Polyester

## WASH CARE INSTRUCTIONS

Wash 30 degrees or dry clean  
Cool iron  
Do not bleach  
Do not tumble dry

## AVAILABLE SIZES - TAPE

- 285 x 218cm - standard tape lined
- 285 x 250cm - standard tape lined
- 285 x 218cm - standard tape unlined
- 285 x 250cm - standard tape unlined

## AVAILABLE SIZES - EYELETS

- 265 x 220cm - eyelets lined (16 eyelets per curtain)
- 265 x 252cm - eyelets lined (16 eyelets per curtain)

## AVAILABLE SIZES - WAVE

- 285 x 218cm - wave tape lined
- 285 x 250cm - wave tape lined

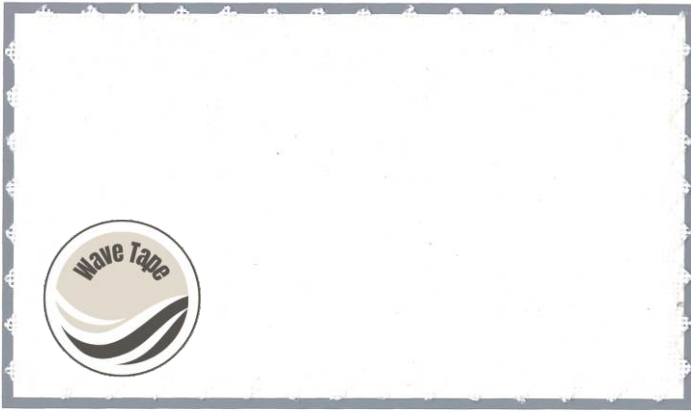
## STUART GRAHAM FABRIC REFERENCE

- Reply Almond
- Reply Iron
- Reply Mist
- Reply Smoke
- Reply White



stuart graham  
Ready Mades

# Willow - *textured sheer*



White



Dune



Sterling



Greystone



Silvery



Charcoal



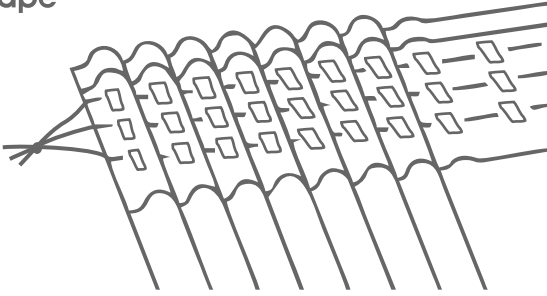
Ocean \*to be discontinued - check stock



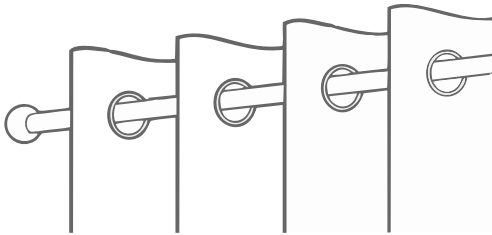
Lagoon \*to be discontinued - check stock

# Willow - *textured sheer*

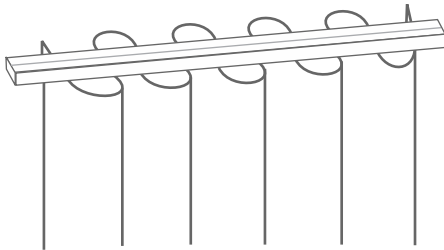
## Tape



## Eyelet



## Wave



## AVAILABLE COLOURS

- White (lined and unlined)
- Greystone (lined and unlined)
- Silvery (lined and unlined)
- Lagoon (lined only)
- Ocean (lined and unlined)
- Dune (lined and unlined)
- Sterling (lined and unlined)
- Charcoal (lined only)

*Wave available in selected colours - please enquire*

## WASH CARE INSTRUCTIONS

Hand/Machine wash or  
Dry clean professionally  
Warm iron  
Do not bleach  
Do not tumble dry

## AVAILABLE SIZES - TAPE

- 285 x 218cm - standard tape lined
- 285 x 250cm - standard tape lined
- 285 x 218cm - standard tape unlined
- 285 x 250cm - standard tape unlined

## AVAILABLE SIZES - EYELETS

- 230 x 220cm - eyelets lined *(14 eyelets per curtain)*
- 230 x 252cm - eyelets lined *(14 eyelets per curtain)*
- 230 x 220cm - eyelets unlined *(14 eyelets per curtain)*
- 230 x 252cm - eyelets unlined *(14 eyelets per curtain)*

## AVAILABLE SIZES - WAVE

- 285 x 218cm - wave tape lined
- 285 x 250cm - wave tape lined

## STUART GRAHAM FABRIC REFERENCE

- Question White
- Question Greystone
- Question Silvery
- Question Lagoon
- Question Ocean
- Question Dune
- Question Sterling
- Question Charcoal

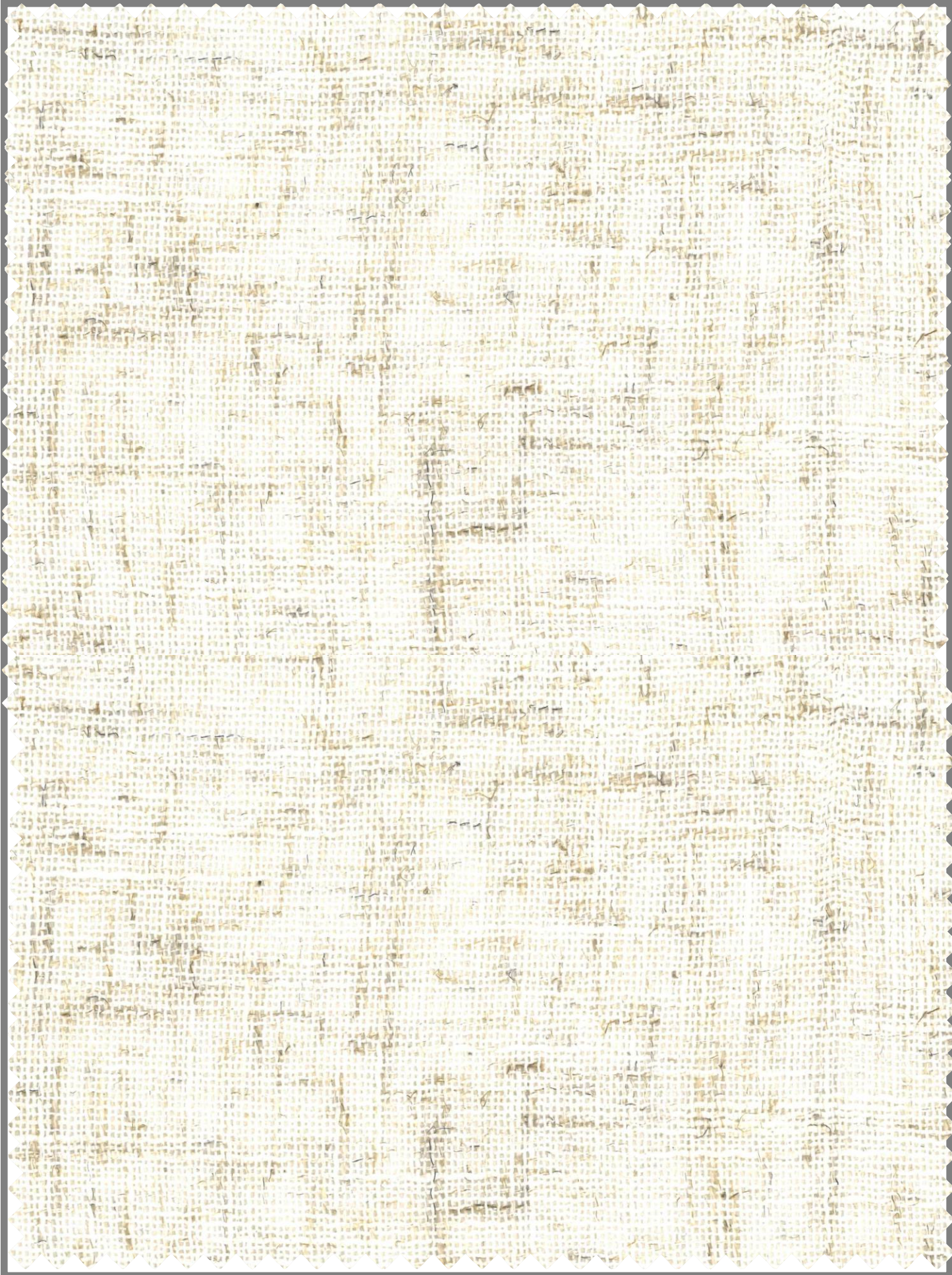
## PRODUCT INFO

100% Polyester  
Lined with white polycotton lining



stuart graham  
Ready Mades

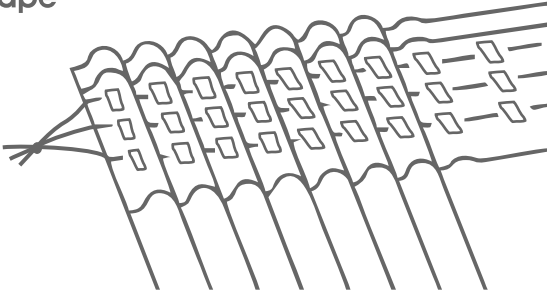
Symphony - *linen texture*



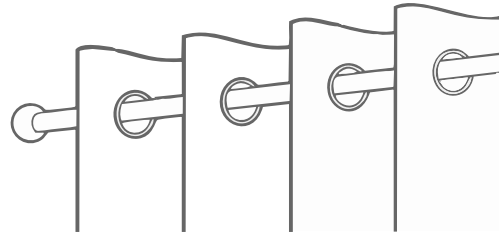
Linen

# Symphony - *linen texture*

## Tape



## Eyelet



### AVAILABLE SIZES - TAPE

230 x 218cm - standard tape lined  
230 x 250cm - standard tape lined

### AVAILABLE SIZES - EYELETS

230 x 220cm - eyelets lined (*14 eyelets per curtain*)  
230 x 252cm - eyelets lined (*14 eyelets per curtain*)

### AVAILABLE COLOURS

- Linen

### PRODUCT INFO

85% Polyester/15% Linen  
Lined with white polyester lining

### WASH CARE INSTRUCTIONS

Machine Wash  
Do not bleach  
Cool iron  
Do not steam  
Do not tumble dry  
Do not dry clean



stuart graham  
Ready Mades

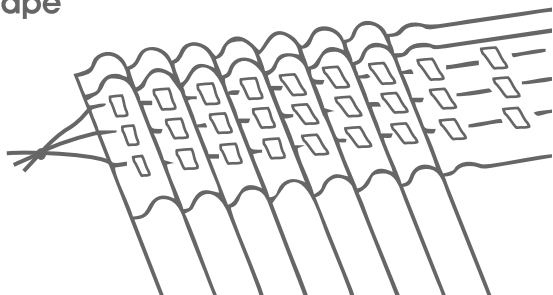
Timeless – *lined sheer*



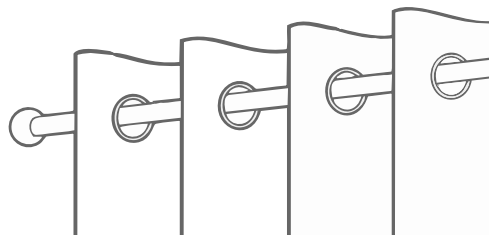
Linen

# Timeless – lined sheer

## Tape



## Eyelet



### AVAILABLE SIZES - TAPE

230 x 218cm - standard tape lined

230 x 250cm - standard tape lined

### AVAILABLE SIZES - EYELETS

230 x 220cm - eyelets lined (14 eyelets per curtain)

230 x 252cm - eyelets lined (14 eyelets per curtain)

### AVAILABLE COLOURS

- Linen

### STUART GRAHAM FABRIC REFERENCE

- Rise Beige

### PRODUCT INFO

100% Polyester

Lined

Vertical Stripe

### WASH CARE INSTRUCTIONS

Handwash

Line drip dry

Do not tumble dry

Do not dry clean

Cool iron

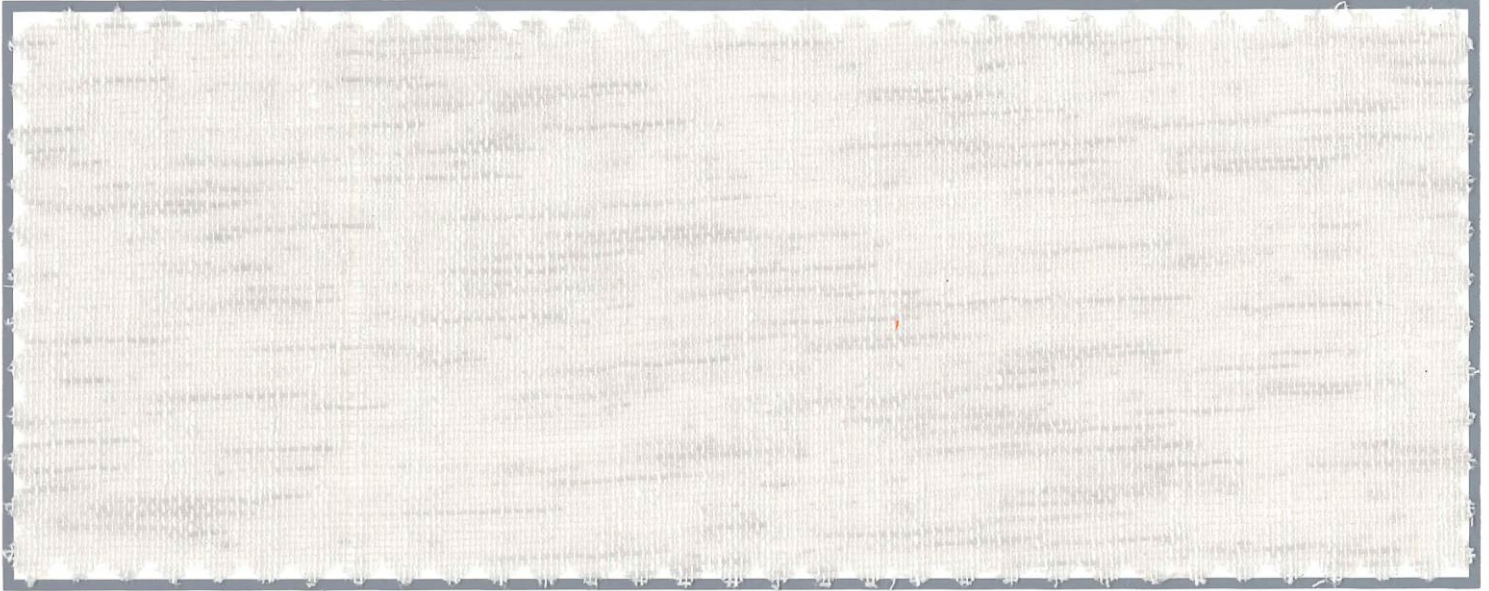


stuart graham  
Ready Mades

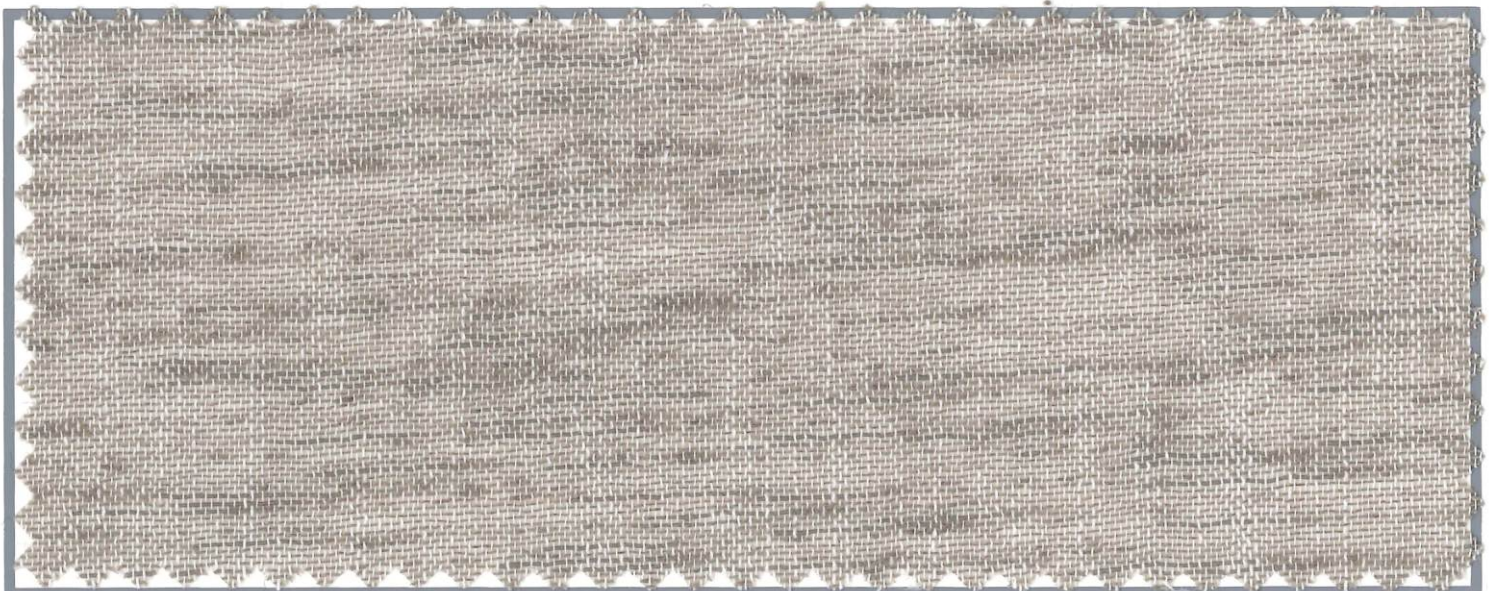
# Whimsical - *textured sheer*



**Windrift**



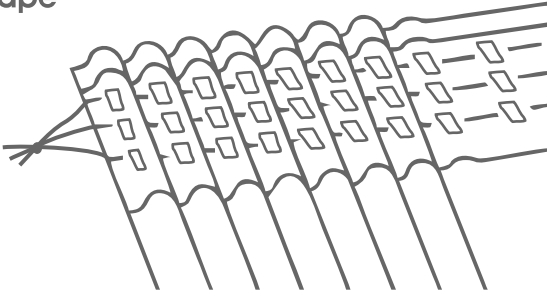
**Mist**



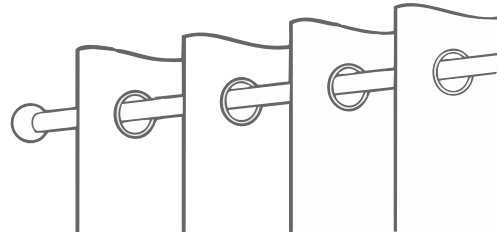
**Gravel**

# Whimsical - *textured sheer*

## Tape



## Eyelet



### AVAILABLE SIZES - TAPE

285 x 218cm - standard tape lined

285 x 250cm - standard tape lined

### AVAILABLE SIZES - EYELETS

230 x 220cm - eyelets lined *(14 eyelets per curtain)*

230 x 252cm - eyelets lined *(14 eyelets per curtain)*

### AVAILABLE COLOURS

- Windrift
- Mist
- Gravel

### STUART GRAHAM FABRIC REFERENCE

- Misty Windrift
- Misty Mist
- Misty Gravel

### PRODUCT INFO

100% Polyester  
Lined with white polycotton lining

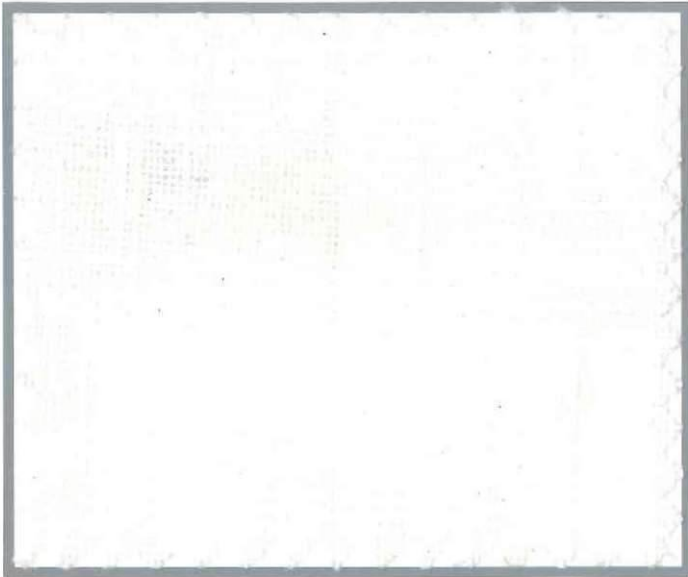
### WASH CARE INSTRUCTIONS

Handwash or  
Dry clean professionally  
Cool iron  
Do not tumble dry  
Do not bleach

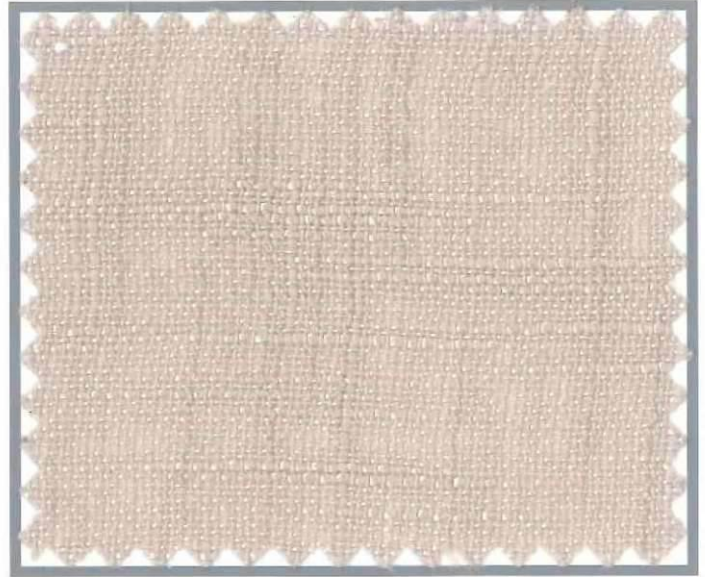


stuart graham  
Ready Mades

# Woodstock - *textured sheer*



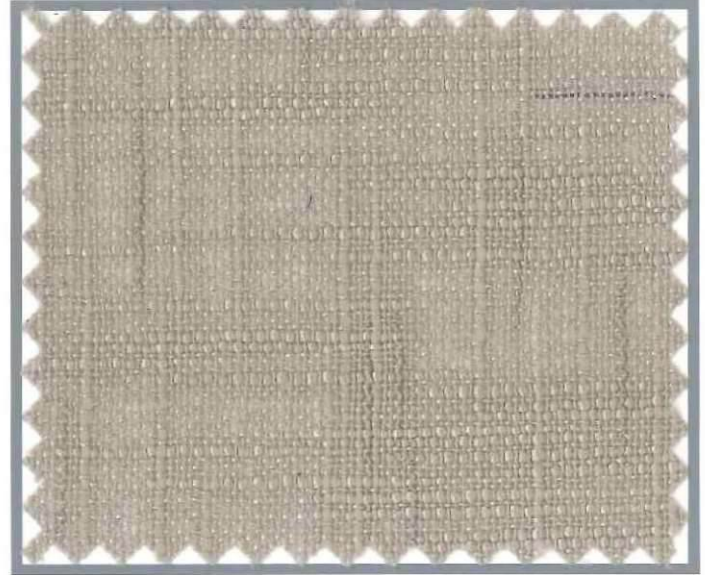
White



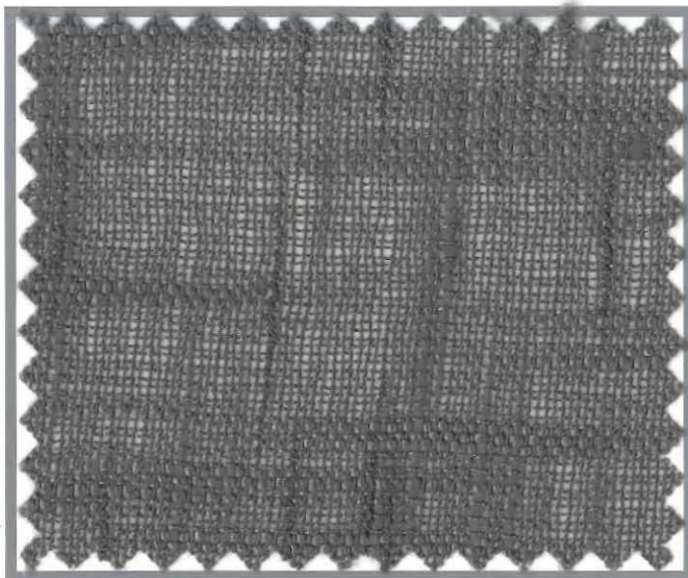
Linen



Mist



Greystone



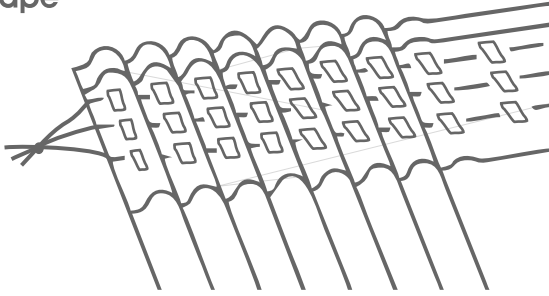
Graphite



Duck Egg \*to be discontinued - check stock

# Woodstock - *textured sheer*

## Tape



## AVAILABLE SIZES - TAPE

- 285 x 218cm - standard tape lined
- 285 x 250cm - standard tape lined

## AVAILABLE COLOURS

- White
- Linen
- Mist
- Greystone
- Duck Egg
- Graphite

## STUART GRAHAM FABRIC REFERENCE

- Cloud White
- Cloud Linen
- Cloud Mist
- Cloud Greystone
- Cloud Willow
- Cloud Graphite

## PRODUCT INFO

100% Polyester  
Lined with white polycotton lining.

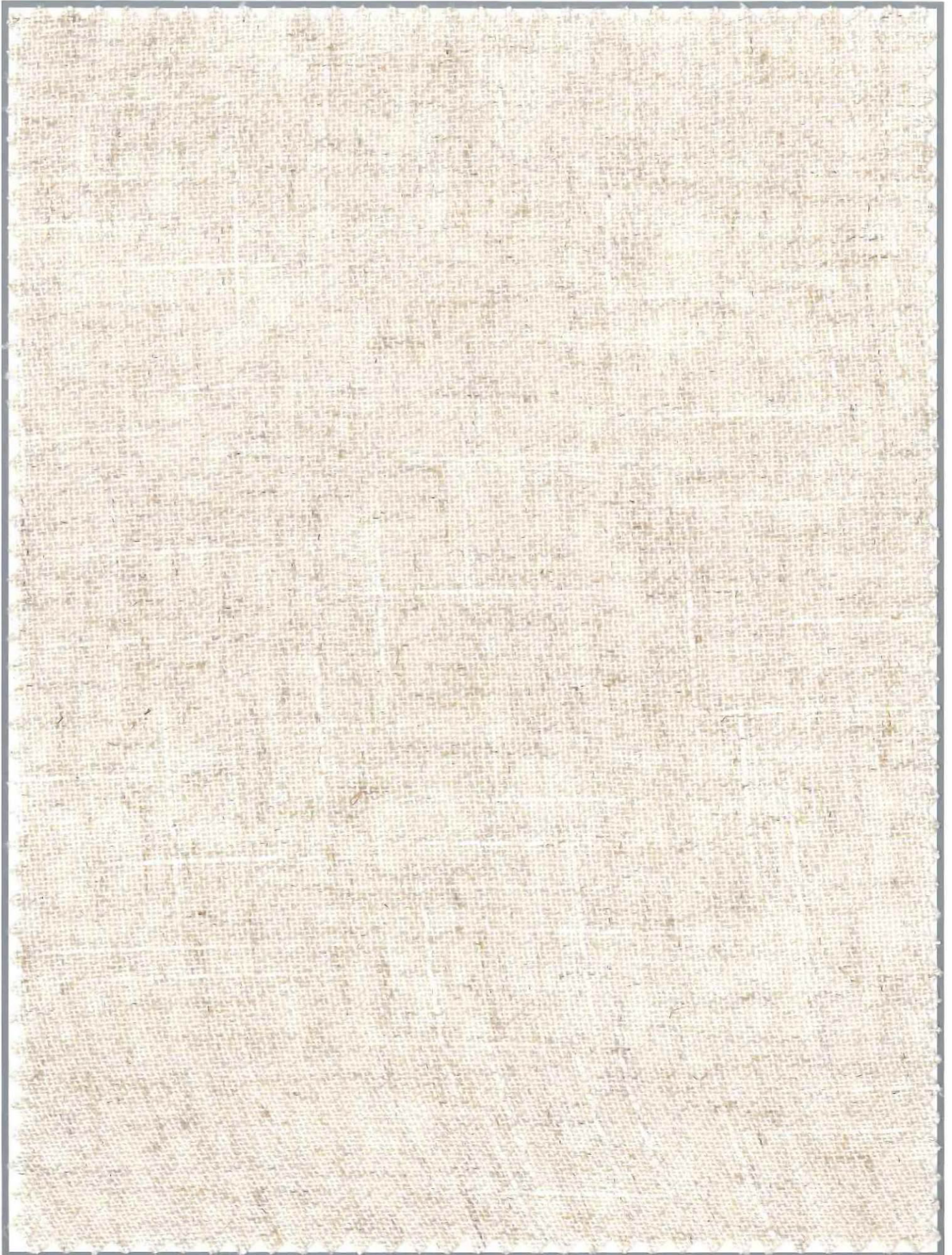
## WASH CARE INSTRUCTIONS

Hand/Machine wash or  
Dry clean professionally  
Cool iron  
Do not steam  
Do not bleach  
Do not tumble dry



stuart graham  
Ready Mades

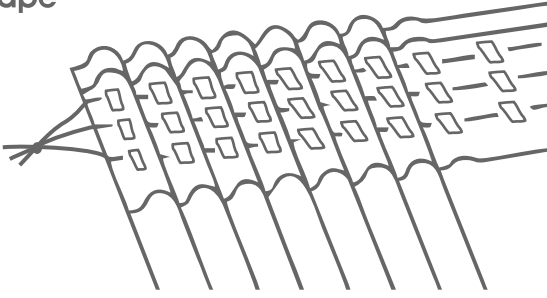
**Blake** - *linen texture*



**Linen**

# Blake - *linen texture*

## Tape

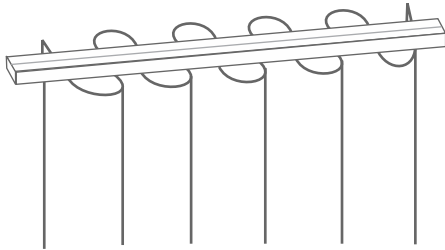


## AVAILABLE SIZES - TAPE

285 x 218cm - standard tape lined

285 x 250cm - standard tape lined

## Wave



## AVAILABLE SIZES - WAVE

285 x 218cm - wave tape lined

285 x 250cm - wave tape lined

## AVAILABLE COLOURS

- Linen

## STUART GRAHAM FABRIC REFERENCE

- Discreet Linen

## PRODUCT INFO

50% Polyester/50% Linen  
Lined with cream polycotton lining.

## WASH CARE INSTRUCTIONS

Wash 30 degrees or  
Dry clean professionally  
Warm iron  
Do not bleach  
Do not tumble dry



stuart graham  
Ready Mades

**Aura** - *linen-look*



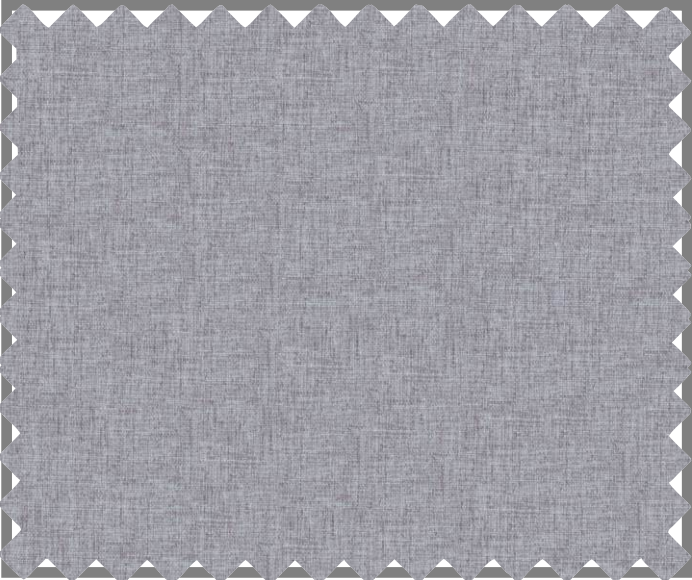
**Sandstone**



**Tan**



**Silver**



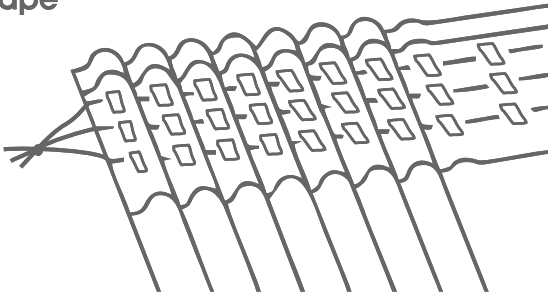
**Steel**



**Iron**

# Aura - linen-look

## Tape

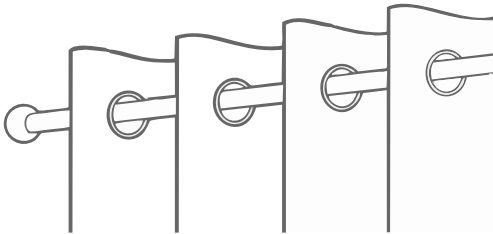


## AVAILABLE SIZES - TAPE

285 x 218cm - standard tape lined

285 x 250cm - standard tape lined

## Eyelet



## AVAILABLE SIZES - EYELETS

265 x 220cm - eyelets lined *(16 eyelets per curtain)*

265 x 252cm - eyelets lined *(16 eyelets per curtain)*

## AVAILABLE COLOURS

- Iron
- Sandstone
- Silver
- Steel
- Tan

## STUART GRAHAM FABRIC REFERENCE

- Aura Iron
- Aura Sandstone
- Aura Silver
- Aura Steel
- Aura Tan

## PRODUCT INFO

100% Polyester

## WASH CARE INSTRUCTIONS

- Handwash or dry clean
- Line dry
- Cool iron
- Do not bleach
- Do not tumble dry



stuart graham  
Ready Mades

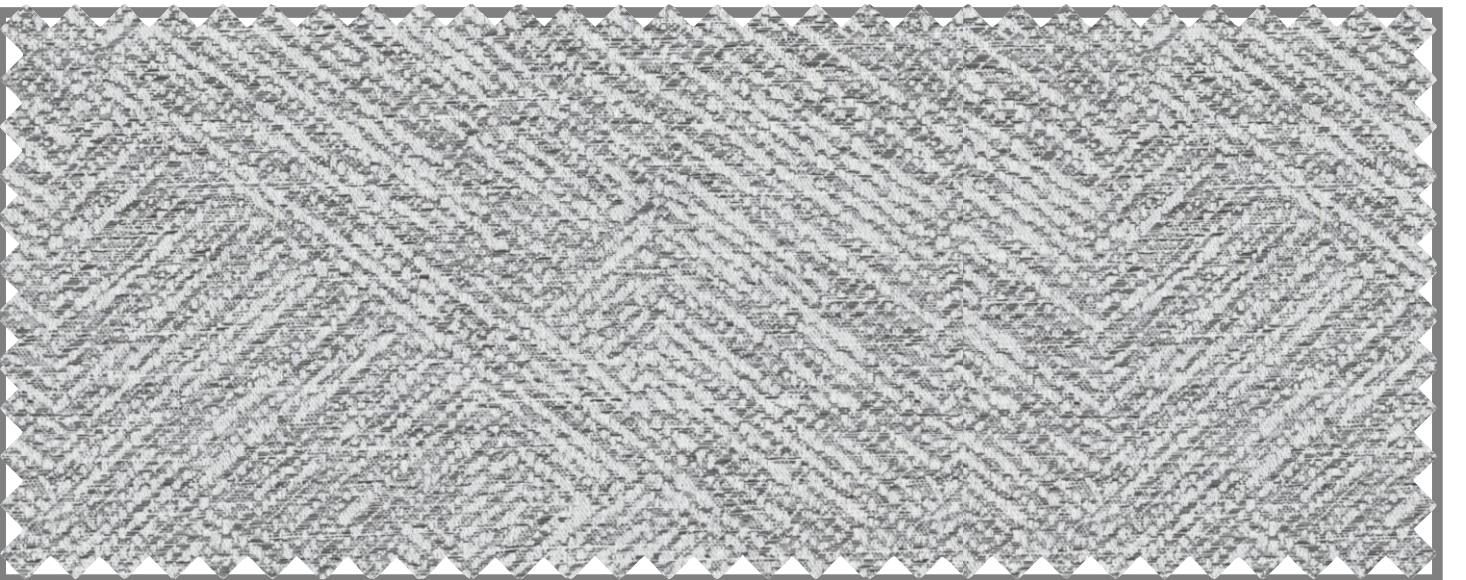
# Matrix - *geometric jacquard*



Dune



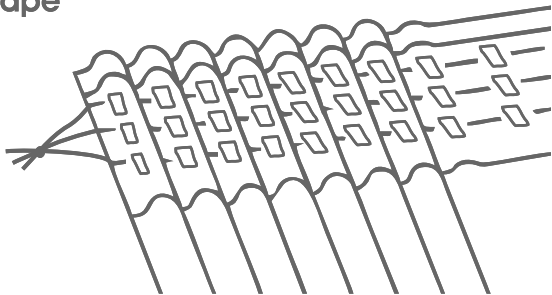
Stone



Steel

# Matrix - *geometric jacquard*

## Tape

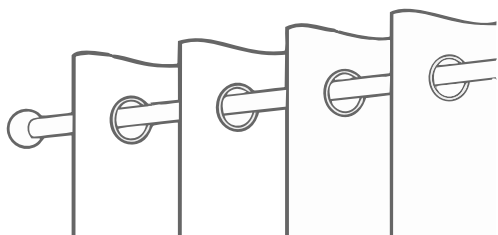


## AVAILABLE SIZES - TAPE

285 x 218cm - standard tape lined

285 x 250cm - standard tape lined

## Eyelet



## AVAILABLE SIZES - EYELETS

265 x 220cm - eyelets lined *(16 eyelets per curtain)*

265 x 252cm - eyelets lined *(16 eyelets per curtain)*

## AVAILABLE COLOURS

- Dune
- Stone
- Steel

## STUART GRAHAM FABRIC REFERENCE

- Matrix Dune
- Matrix Stone
- Matrix Steel

## PRODUCT INFO

100% Polyester

## WASH CARE INSTRUCTIONS

- Handwash or dry clean
- Line dry
- Cool iron
- Do not bleach
- Do not tumble dry

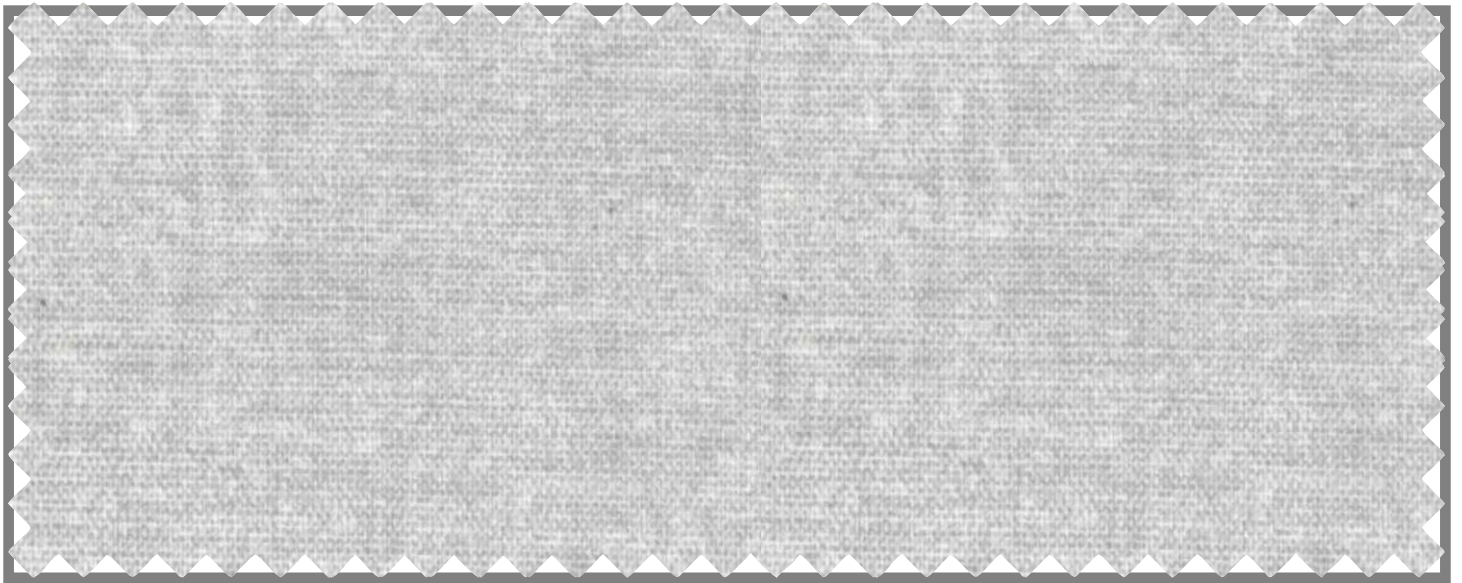


stuart graham  
Ready Mades

# Colourwash - *printed texture*



Grey



Sterling



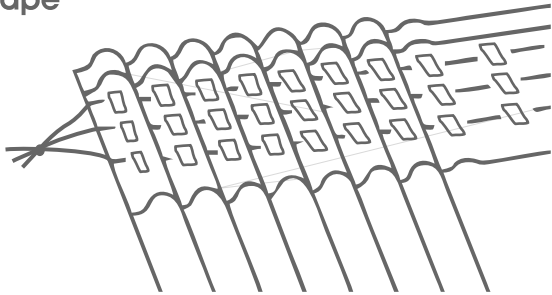
Charcoal



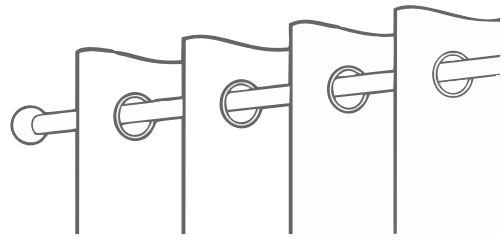
Denim

# Colourwash - *printed texture*

Tape



Eyelet



## **AVAILABLE SIZES - TAPE**

230 x 218cm - standard tape lined

230 x 250cm - standard tape lined

## **AVAILABLE SIZES - EYELETS**

230 x 220cm - eyelets lined *(14 eyelets per curtain)*

230 x 252cm - eyelets lined *(14 eyelets per curtain)*

## **AVAILABLE COLOURS**

- Grey
- Sterling
- Charcoal
- Denim

## **PRODUCT INFO**

52% Polyester/48% Cotton print  
Lined with white polycotton lining.

## **WASH CARE INSTRUCTIONS**

- Handwash
- Line drip dry
- Cool iron
- Do not bleach
- Do not tumble dry
- Do not dry clean



stuart graham  
Ready Mades

# Night Time - woven dim-out



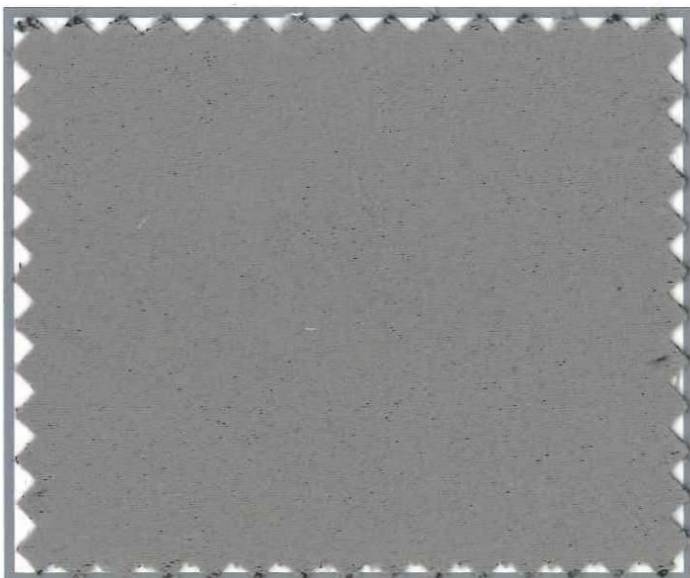
White



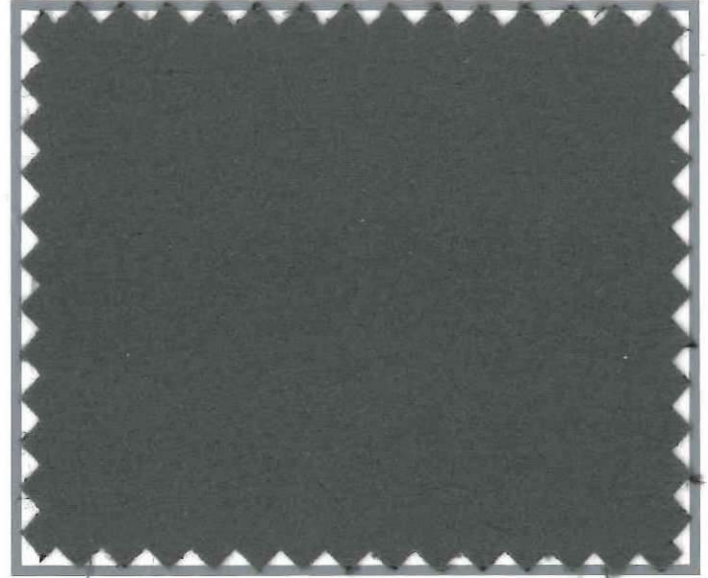
Cream



Greystone



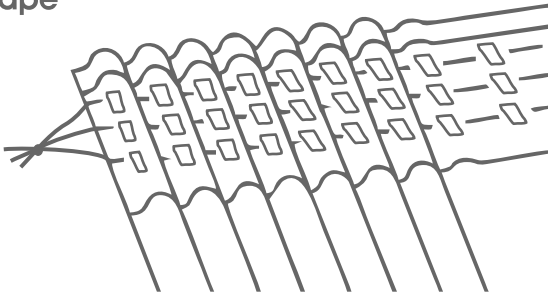
Smoke



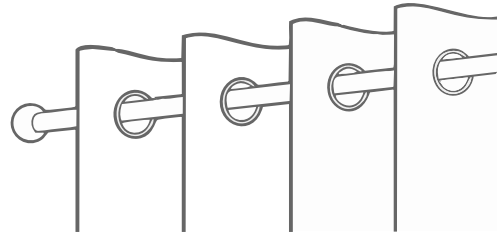
Slate

# Night Time - woven dim-out

## Tape



## Eyelet



## AVAILABLE SIZES - TAPE

- 265 x 218cm - standard tape self-lined
- 265 x 250cm - standard tape self-lined

## AVAILABLE SIZES - EYELETS

- 230 x 220cm - eyelets self-lined (14 eyelets per curtain)
- 230 x 252cm - eyelets self-lined (14 eyelets per curtain)

## AVAILABLE COLOURS

- White
- Cream
- Greystone
- Smoke
- Slate

## STUART GRAHAM FABRIC REFERENCE

- Night Time White
- Night Time Cream
- Night Time Greystone
- Night Time Smoke
- Night Time Slate

## PRODUCT INFO

100% Polyester  
Woven blackout  
Not total blackout

## WASH CARE INSTRUCTIONS

Wash 30 degrees or  
Dry clean professionally  
Warm iron  
Do not bleach  
Do not tumble dry



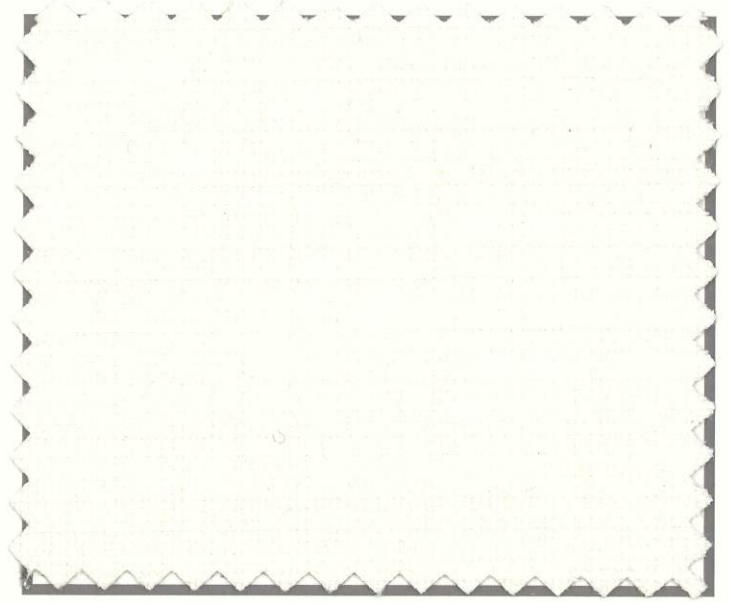
stuart graham  
Ready Mades

Dusk - *self-lined texture*

(100% Blockout)



Lake



Coconut



Stone

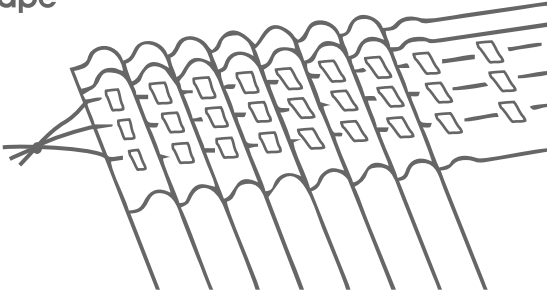


Putty

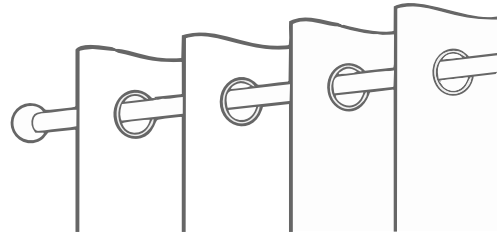
# Dusk - *self-lined texture*

(100% Blockout)

## Tape



## Eyelet



### AVAILABLE SIZES - TAPE

265 x 218cm - standard tape self-lined

265 x 250cm - standard tape self-lined

### AVAILABLE SIZES - EYELETS

265 x 220cm - eyelets self-lined *(16 eyelets per curtain)*

265 x 252cm - eyelets self-lined *(16 eyelets per curtain)*

### AVAILABLE COLOURS

- Lake
- Putty
- Stone
- Coconut

### STUART GRAHAM FABRIC REFERENCE

- Dreamland Lake
- Dreamland Putty
- Dreamland Stone
- Dreamland Coconut

### PRODUCT INFO

100% Polyester

Self-lined 3 pass coated blackout (total blackout)

### WASH CARE INSTRUCTIONS

Cool hand/machine wash

Do not dry clean

Cool iron on face side only

Do not steam

Do not tumble dry

Do not bleach

Line dry in shade *(avoid coated side touching when hanging)*

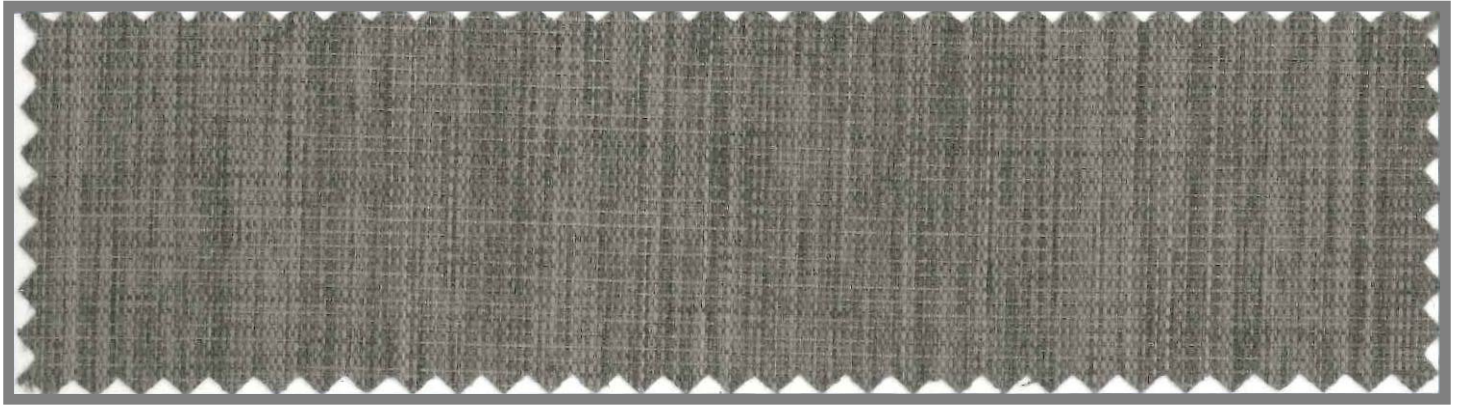
Do not rub or wring.



stuart graham  
Ready Mades

# Midnight - *self-lined*

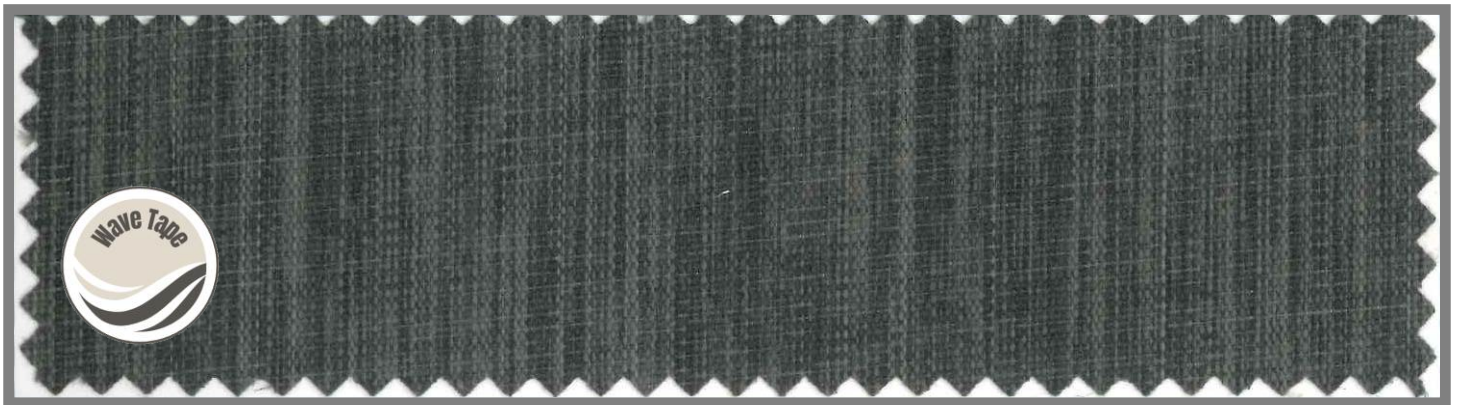
(100% Blockout)



Earth



Grey



Charcoal

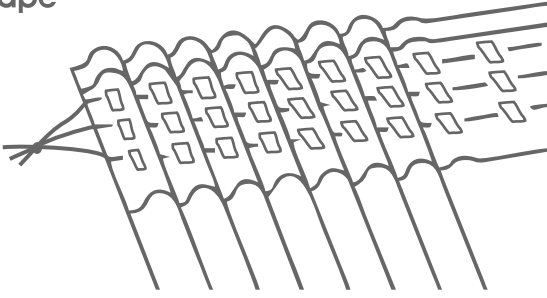


Blue

# Midnight - *self-lined*

(100% Blockout)

## Tape

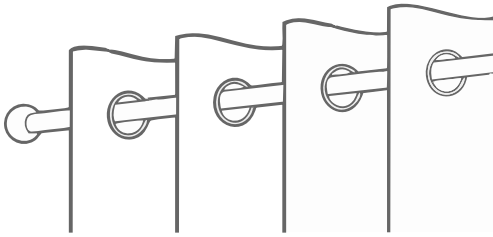


## AVAILABLE SIZES - TAPE

230 x 218cm - standard tape self-lined

230 x 250cm - standard tape self-lined

## Eyelet

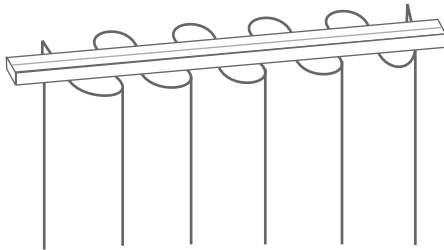


## AVAILABLE SIZES - EYELETS

230 x 220cm - eyelets self-lined (14 eyelets per curtain)

230 x 252cm - eyelets self-lined (14 eyelets per curtain)

## Wave



## AVAILABLE SIZES - WAVE

285 x 218cm - wave tape lined

285 x 250cm - wave tape lined

## AVAILABLE COLOURS

- Earth
- Grey
- Charcoal
- Blue

Wave available in selected colours - please enquire

## PRODUCT INFO

100% Polyester

Self-lined 3 pass coated blockout (total blockout)

## WASH CARE INSTRUCTIONS

- Cool hand/machine wash
- Cool iron on face side only
- Do not steam
- Do not tumble dry
- Do not bleach
- Line dry in shade (avoid coated side touching when hanging)
- Do not rub or wring.

## STUART GRAHAM FABRIC REFERENCE

- Nightly Earth
- Nightly Grey
- Nightly Charcoal
- Nightly Blue



stuart graham  
Ready Mades

**Sweet Dreams** - *self-lined texture*

(100% Blockout)



**Natural**



**Greystone**

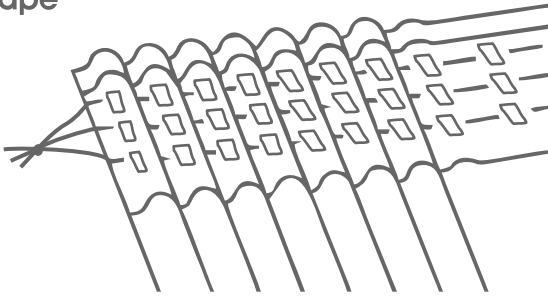


**Sky**

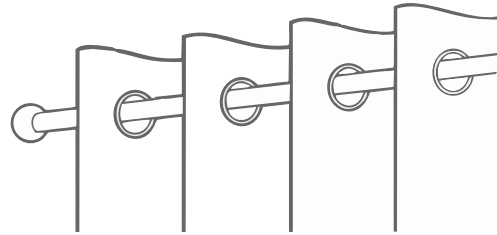
# Sweet Dreams - *self-lined texture*

(100% Blockout)

Tape



Eyelet



## AVAILABLE SIZES - TAPE

230 x 218cm - standard tape self-lined

230 x 250cm - standard tape self-lined

## AVAILABLE SIZES - EYELETS

230 x 220cm - eyelets self-lined (14 eyelets per curtain)

230 x 252cm - eyelets self-lined (14 eyelets per curtain)

## AVAILABLE COLOURS

- Natural
- Greystone
- Sky

## STUART GRAHAM FABRIC REFERENCE

- Snooze Natural
- Snooze Greystone
- Snooze Sky

## PRODUCT INFO

100% Polyester  
Self-lined 3 pass coated blockout (total blockout)

## WASH CARE INSTRUCTIONS

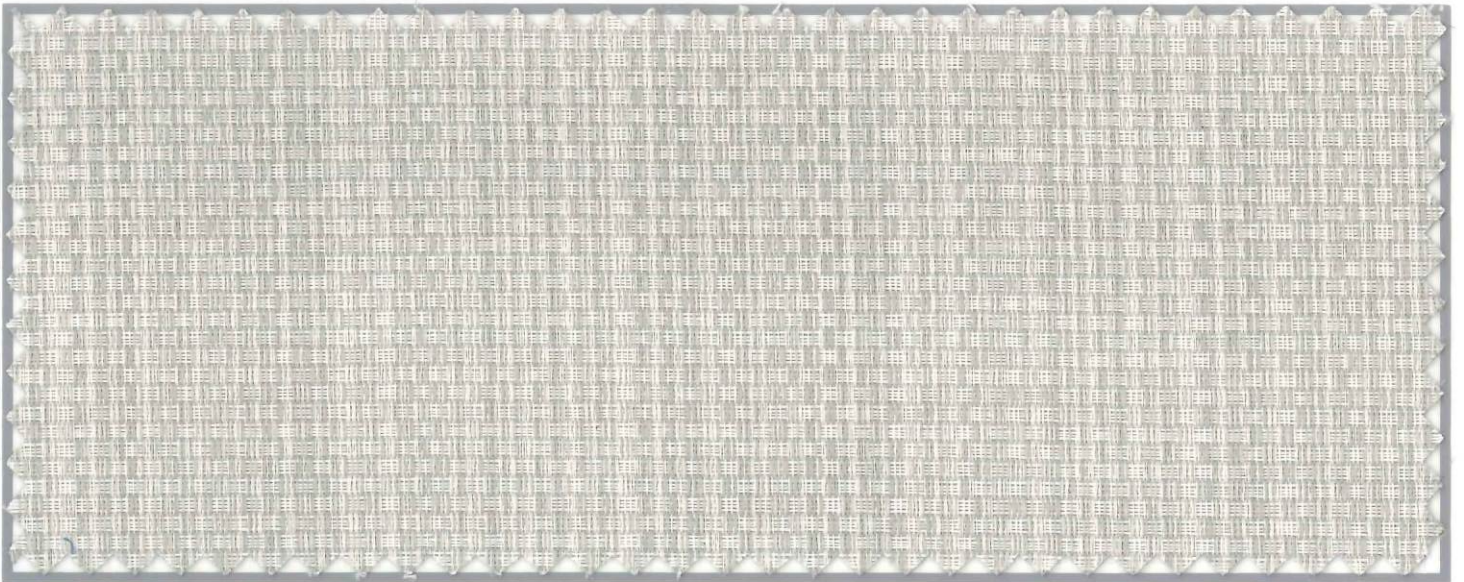
Cool hand/machine wash  
Do not dry clean  
Cool iron on face side only  
Do not steam  
Do not tumble dry  
Do not bleach  
Line dry in shade (avoid coated side touching when hanging)  
Do not rub or wring.



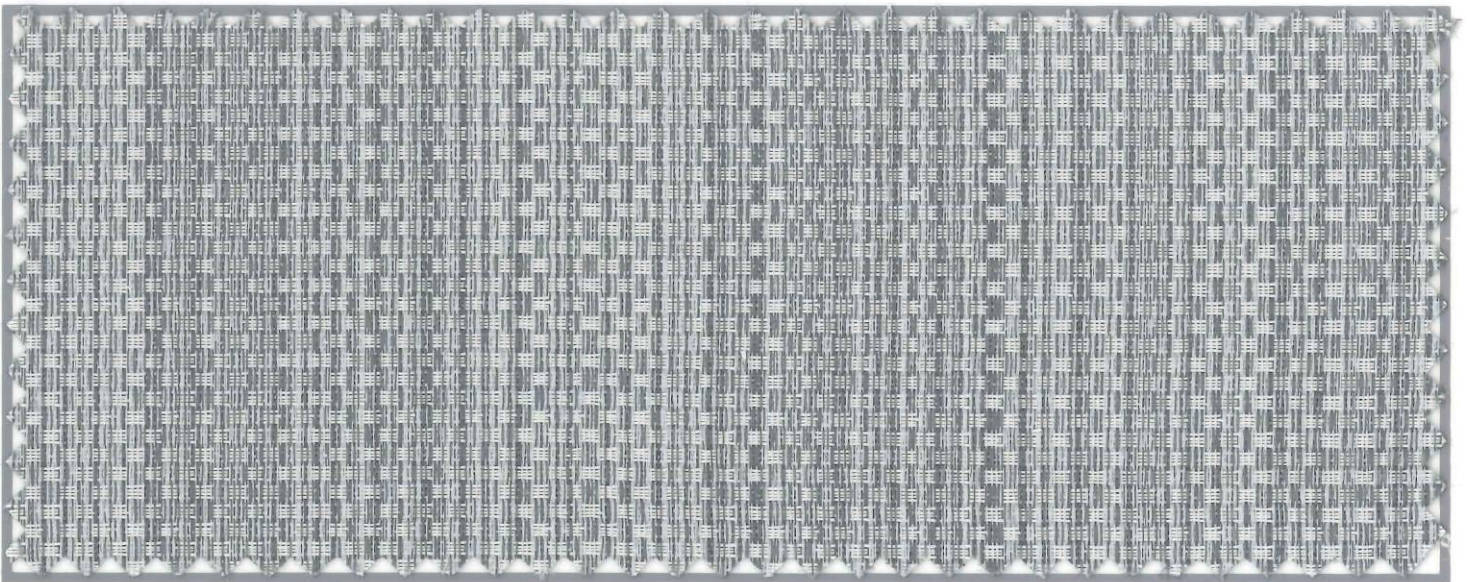
stuart graham  
Ready Mades

# Slumber - *self-lined texture*

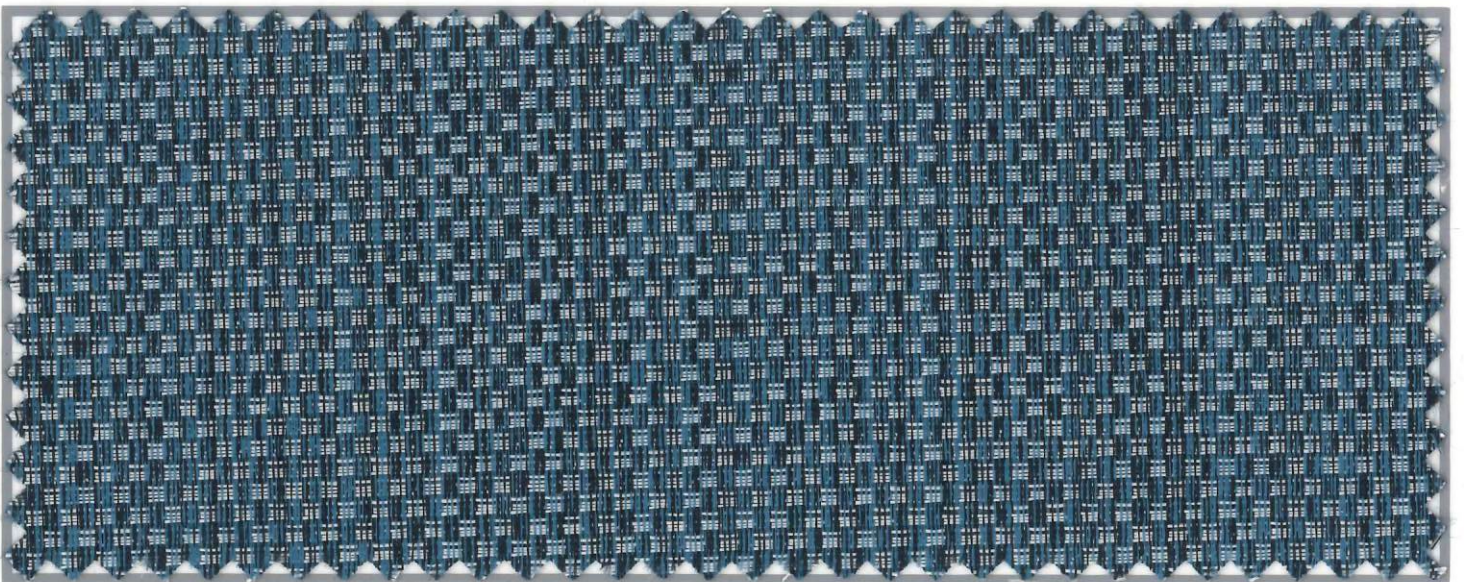
(100% Blockout)



Natural



Steel

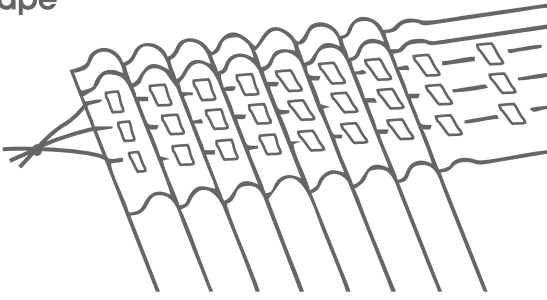


Lagoon

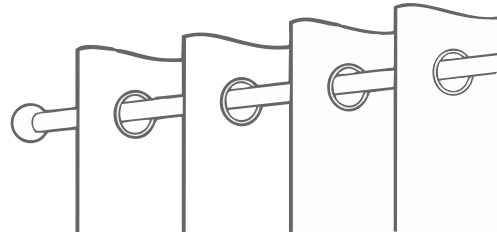
# Slumber - *self-lined texture*

(100% Blockout)

## Tape



## Eyelet



### AVAILABLE SIZES - TAPE

230 x 218cm - standard tape self-lined

230 x 250cm - standard tape self-lined

### AVAILABLE SIZES - EYELETS

230 x 220cm - eyelets self-lined *(14 eyelets per curtain)*

230 x 252cm - eyelets self-lined *(14 eyelets per curtain)*

### AVAILABLE COLOURS

- Natural
- Steel
- Lagoon

### STUART GRAHAM FABRIC REFERENCE

- Siesta Natural
- Siesta Steel
- Siesta Lagoon

### PRODUCT INFO

100% Polyester

Self-lined 3 pass coated blockout (total blockout)

### WASH CARE INSTRUCTIONS

Cool hand/machine wash

Do not dry clean

Cool iron on face side only

Do not steam

Do not tumble dry

Do not bleach

Line dry in shade *(avoid coated side touching when hanging)*

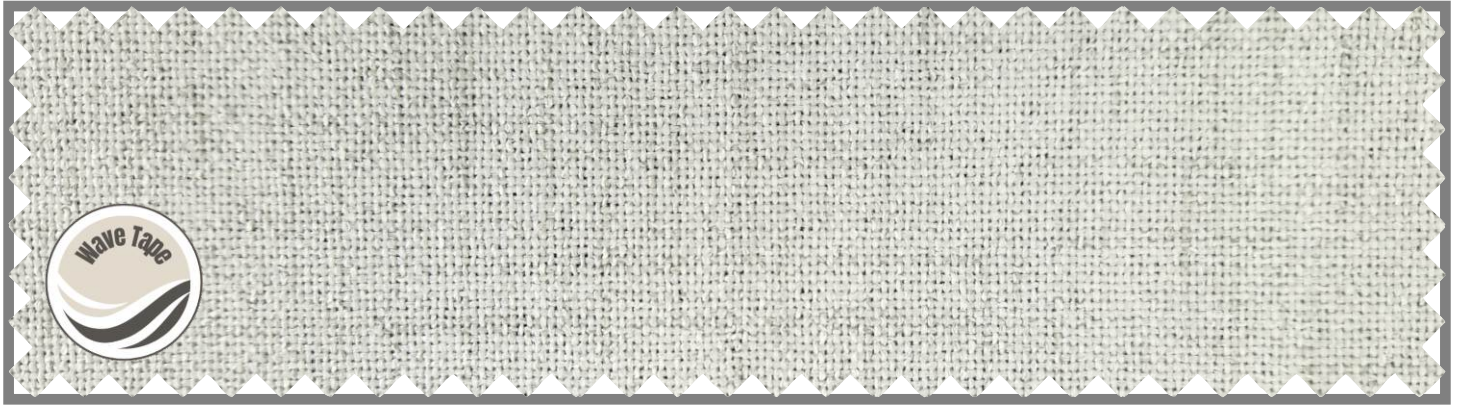
Do not rub or wring.



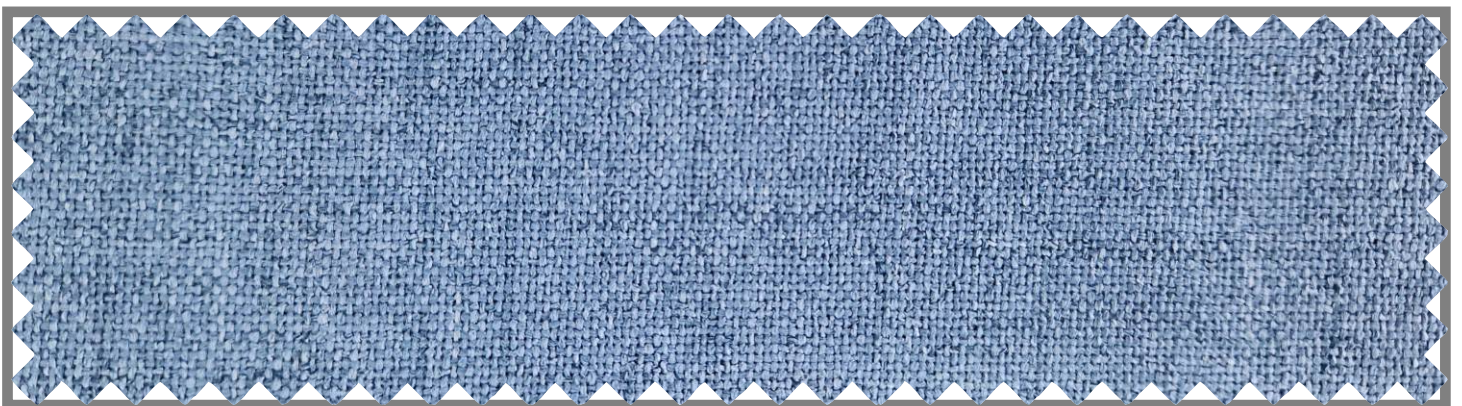
stuart graham  
Ready Mades

# Goodnight - *self-lined texture*

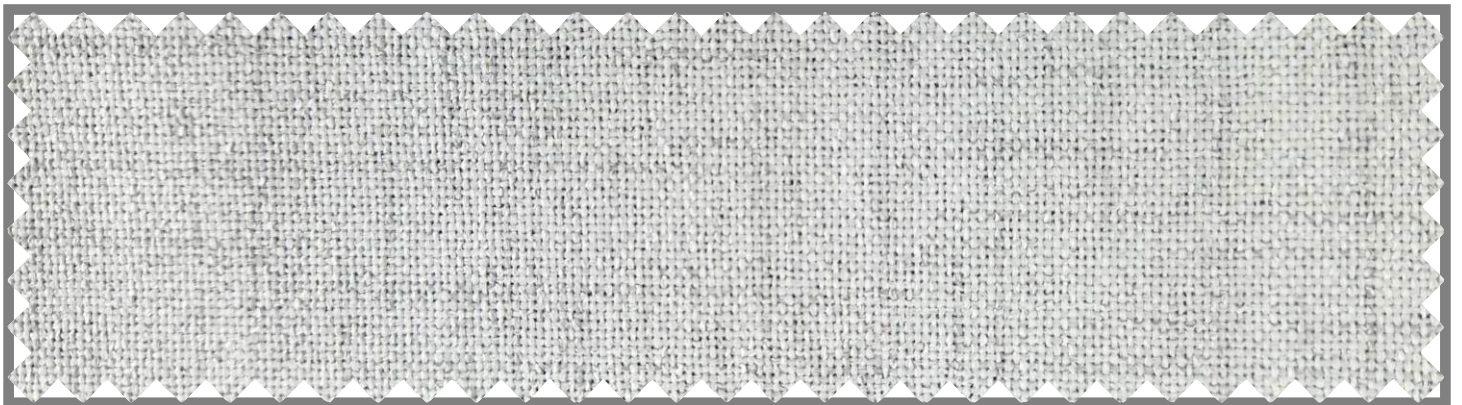
(100% Blockout)



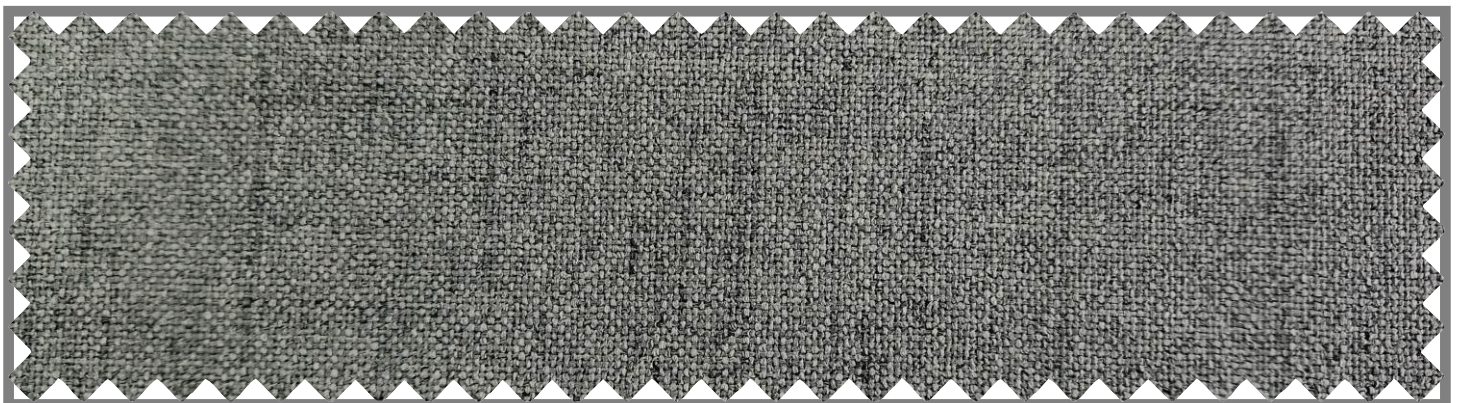
Linen



Denim



Grey

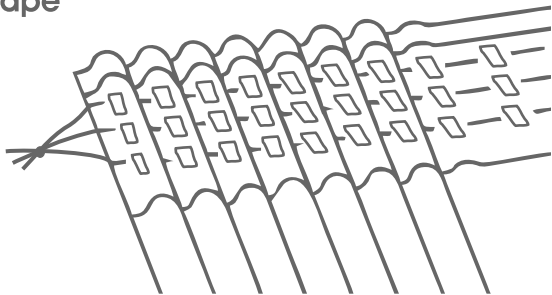


Charcoal

# Goodnight - *self-lined texture*

(100% Blockout)

## Tape

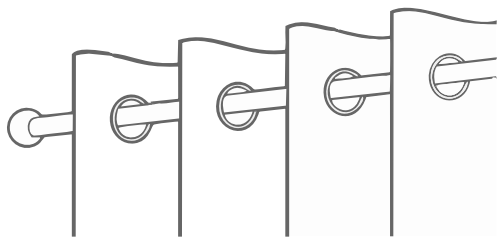


### AVAILABLE SIZES - TAPE

265 x 218cm - standard tape self-lined

265 x 250cm - standard tape self-lined

## Eyelet

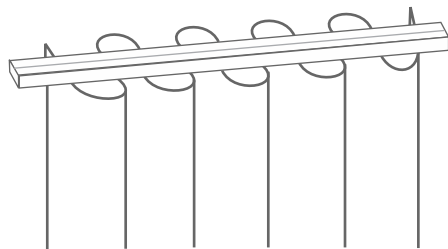


### AVAILABLE SIZES - EYELETS

265 x 220cm - eyelets self-lined (16 eyelets per curtain)

265 x 252cm - eyelets self-lined (16 eyelets per curtain)

## Wave



### AVAILABLE SIZES - WAVE

265 x 218cm - wave tape lined

265 x 250cm - wave tape lined

### AVAILABLE COLOURS

- Linen
- Denim
- Grey
- Charcoal

*Wave available in selected colours - please enquire*

### PRODUCT INFO

100% Polyester

Self-lined with woven laminate backing (not coated)

Total blackout

### WASH CARE INSTRUCTIONS

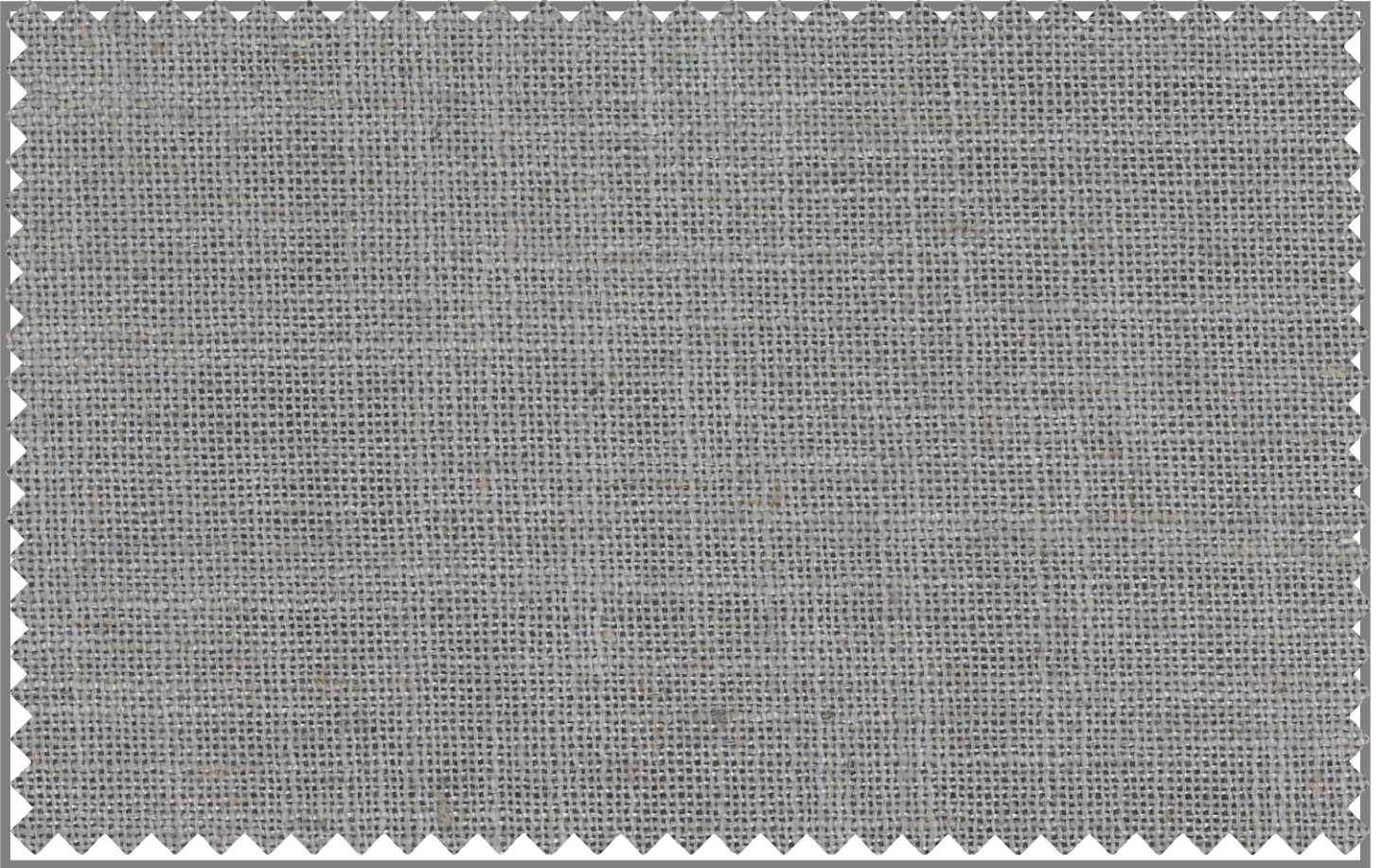
- Dry clean only
- Cool iron on face side only
- Do not wash
- Do not tumble dry
- Do not bleach



stuart graham  
Ready Mades

Dawn - *self-lined texture*

(100% Blockout)



Smoke

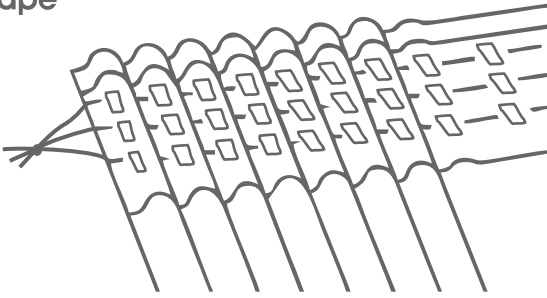


Pepper

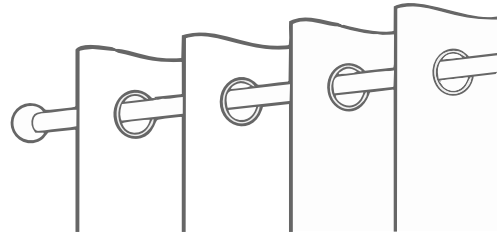
# Dawn - *self-lined texture*

(100% Blockout)

## Tape



## Eyelet



### AVAILABLE SIZES - TAPE

265 x 218cm - standard tape self-lined

265 x 250cm - standard tape self-lined

### AVAILABLE SIZES - EYELETS

265 x 220cm - eyelets self-lined *(16 eyelets per curtain)*

265 x 252cm - eyelets self-lined *(16 eyelets per curtain)*

### AVAILABLE COLOURS

- Canvas
- Smoke
- Pepper

### PRODUCT INFO

96% Polyester/4% Linen

Self-lined with woven laminate backing (not coated)

Total blockout

### WASH CARE INSTRUCTIONS

Dry clean only

Cool iron on face side only

Do not wash

Do not tumble dry

Do not bleach



stuart graham  
Ready Mades

# Daybreak - *self-lined texture*

(100% Blockout)



Fog

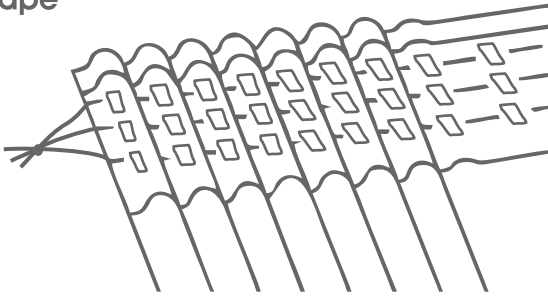


Ocean

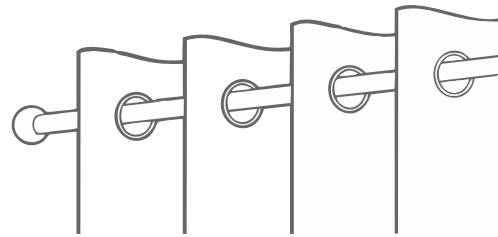
# Daybreak - *self-lined texture*

(100% Blockout)

Tape



Eyelet



## AVAILABLE SIZES - TAPE

265 x 218cm - standard tape self-lined

265 x 250cm - standard tape self-lined

## AVAILABLE SIZES - EYELETS

265 x 220cm - eyelets self-lined *(16 eyelets per curtain)*

265 x 252cm - eyelets self-lined *(16 eyelets per curtain)*

## AVAILABLE COLOURS

- Fog
- Ocean

## PRODUCT INFO

75% Polyester/25% Viscose  
Self-lined with woven laminate backing (not coated)  
Total blackout

## WASH CARE INSTRUCTIONS

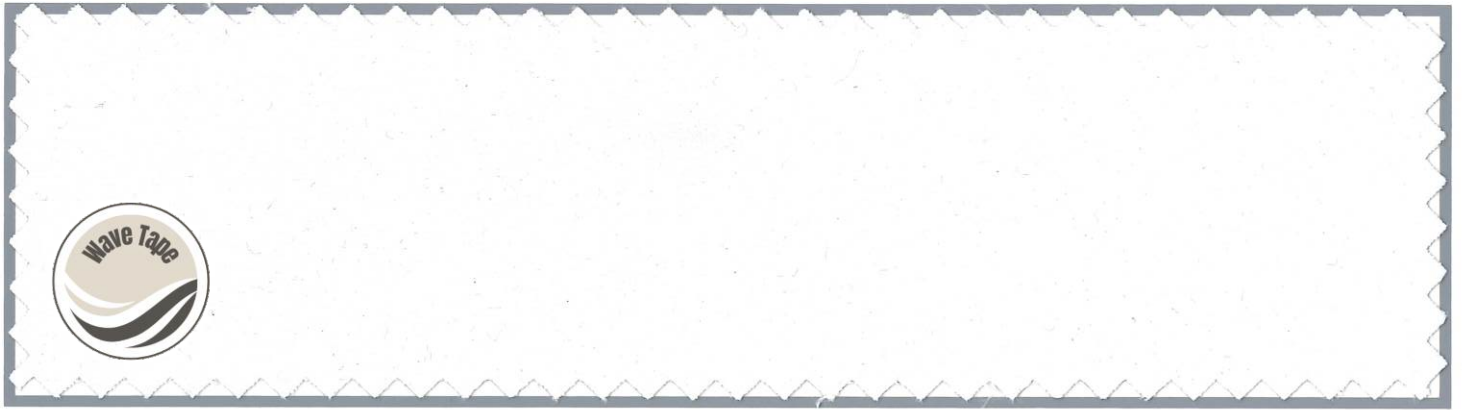
- Dry clean only
- Cool iron on face side only
- Do not wash
- Do not tumble dry
- Do not bleach



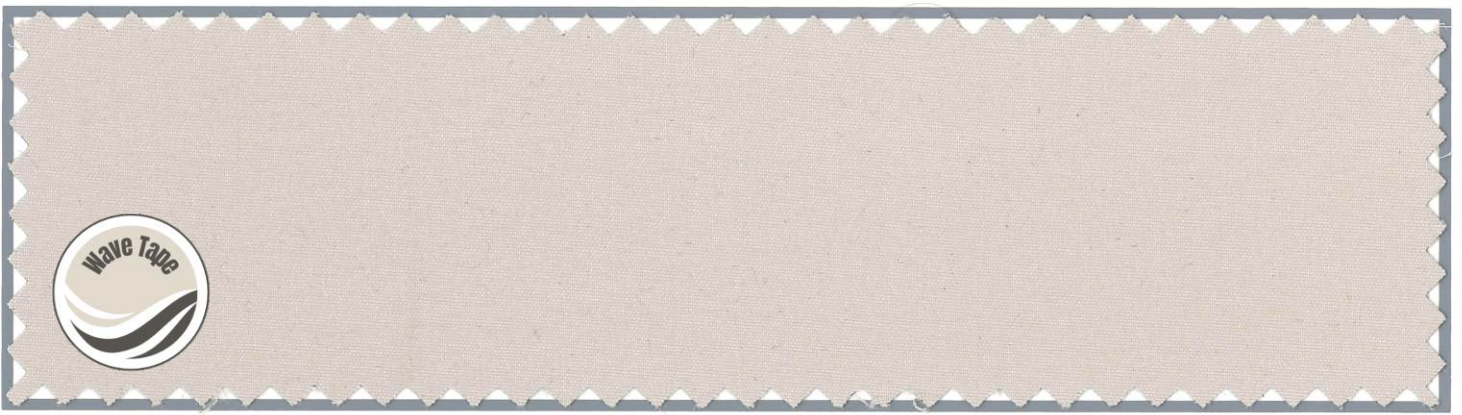
stuart graham  
Ready Mades

# Solarline - *self-lined*

(100% Blockout)



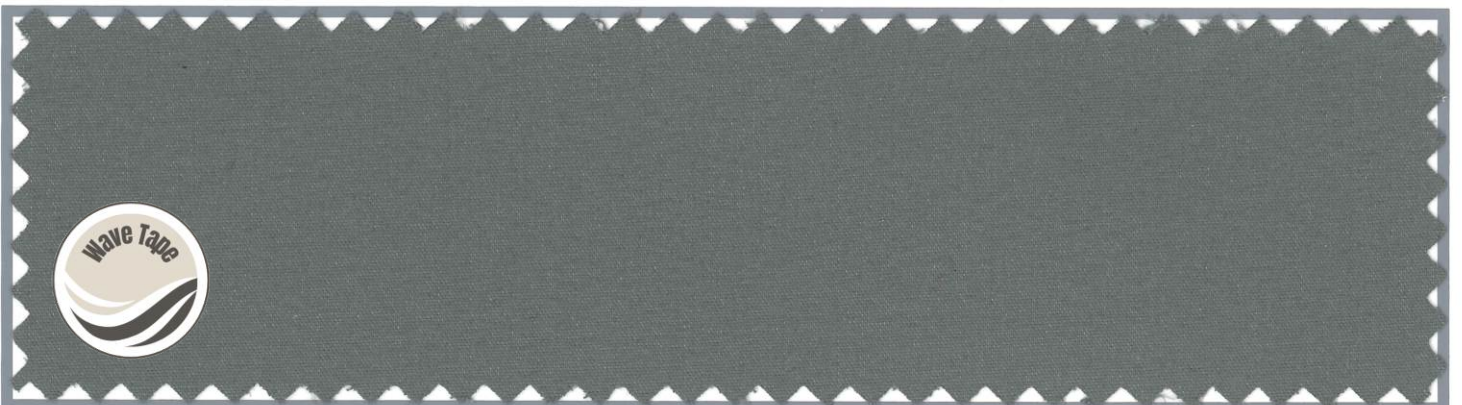
White



Dune



Quarry

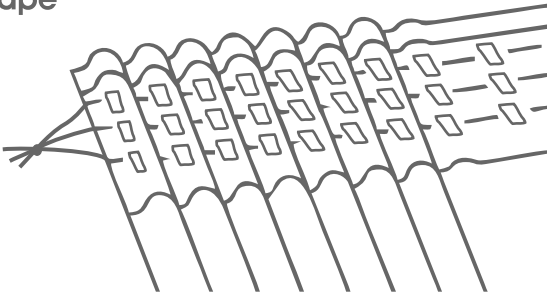


Steel

# Solarline - self-lined

(100% Blockout)

## Tape

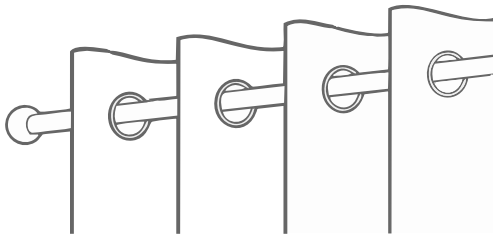


## AVAILABLE SIZES - TAPE

265 x 218cm - standard tape self-lined

265 x 250cm - standard tape self-lined

## Eyelet

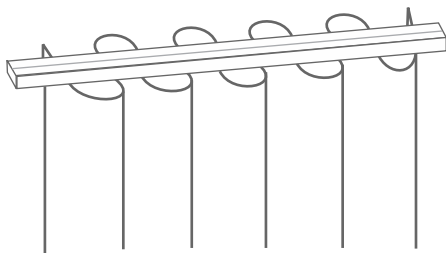


## AVAILABLE SIZES - EYELETS

230 x 220cm - eyelets self-lined (14 eyelets per curtain)

230 x 252cm - eyelets self-lined (14 eyelets per curtain)

## Wave



## AVAILABLE SIZES - WAVE

285 x 218cm - wave tape self-lined

285 x 250cm - wave tape self-lined

## AVAILABLE COLOURS

- White
- Dune
- Quarry
- Steel

*Wave available in selected colours - please enquire*

## STUART GRAHAM FABRIC REFERENCE

- Solarline White
- Solarline Dune
- Solarline Quarry
- Solarline Steel

## WASH CARE INSTRUCTIONS

Cool hand/machine wash  
Do not dry clean  
Cool iron on face side only  
Do not steam  
Do not tumble dry  
Do not bleach  
Line dry in shade  
Do not rub or wring.

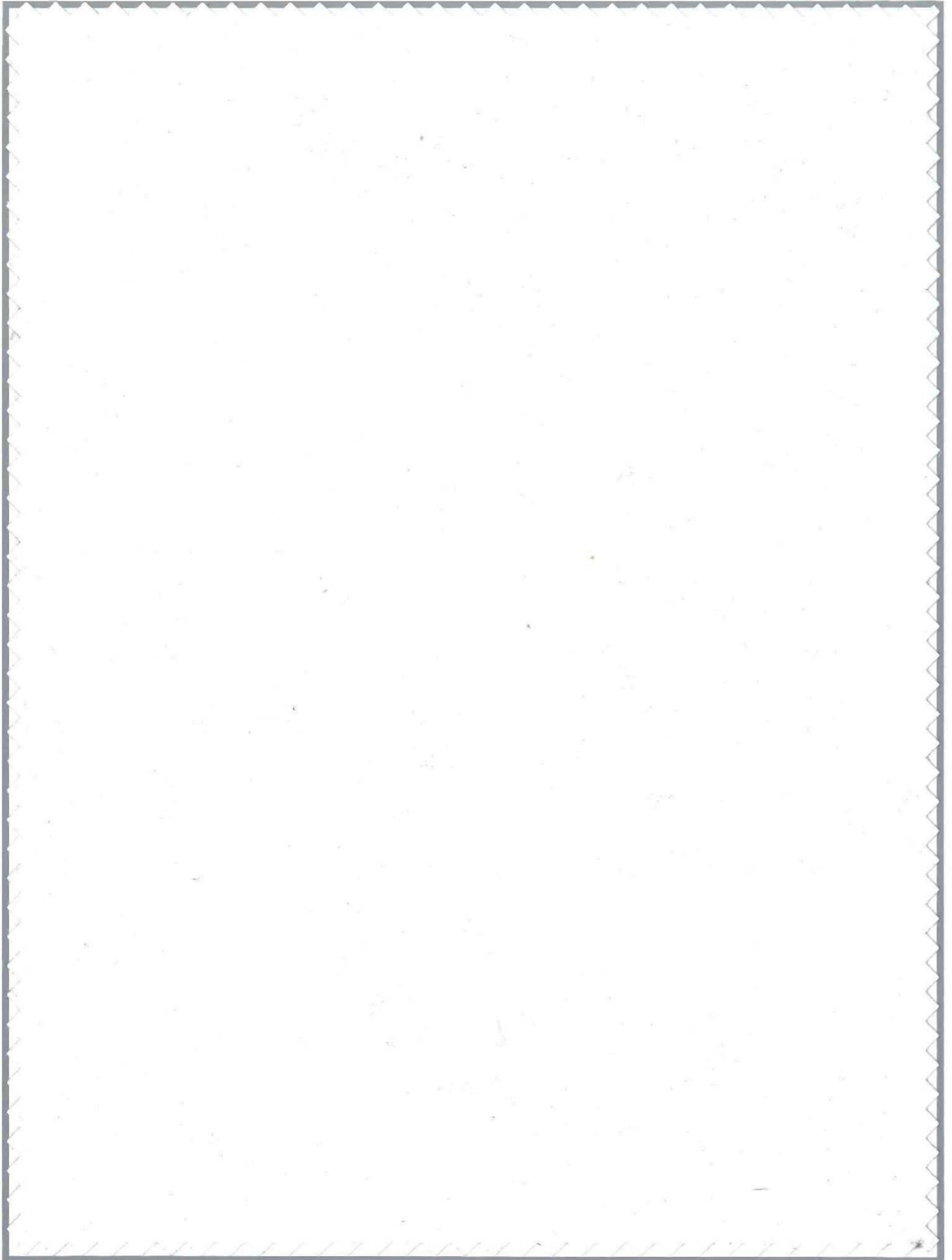
## PRODUCT INFO

100% Polyester  
Silicone coated blockout  
Total blockout



stuart graham  
Ready Mades

# Blockout - *lining attachment*

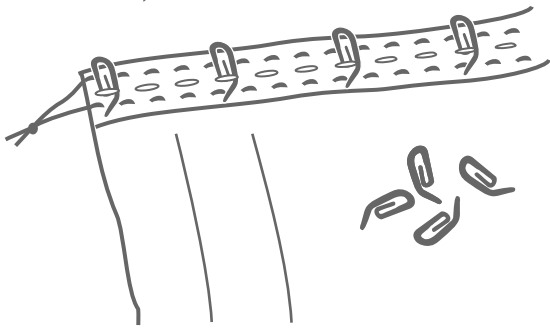


White/White

# Blockout - lining attachment

## Lining tape

(hooks not included)



## AVAILABLE SIZES - LINING TAPE

130 x 210cm - lining tape *(attaches to the back of a taped curtain)*

130 x 240cm - lining tape *(attaches to the back of a taped curtain)*

265 x 210cm - lining tape *(attaches to the back of a taped curtain)*

265 x 240cm - lining tape *(attaches to the back of a taped curtain)*

## AVAILABLE COLOURS

- White/white

## STUART GRAHAM FABRIC REFERENCE

- Blockout lining White/White

## PRODUCT INFO

80% Polyester/20% Cotton

3 Pass coated blockout (total blockout)

Lining tape allows this curtain to be attached to the back of any taped curtain by using standard curtain hooks.

This product can only be used in conjunction with a taped curtain (lined or unlined) to block out light.

It is not necessary to gather the blockout curtain before attaching to the taped curtain.

## WASH CARE INSTRUCTIONS

Hand/machine wash

Do not dry clean

Cool iron

Do not bleach

Do not steam

Do not tumble dry



stuart graham  
Ready Mades



## Contact Us

### HEAD OFFICE: PORT ELIZABETH

1 Sidon Street, North End

**Tel:** (041) 402 1300

**Fax:** (041) 487 3432

**Ready mades email:** [readymades@stuartgraham.co.za](mailto:readymades@stuartgraham.co.za)

### JOHANNESBURG

**Tel:** (011) 444 3424

### PRETORIA

**Tel:** (011) 444 3424

### DURBAN

**Tel:** (031) 303 3273

### CAPE TOWN

**Tel:** (021) 914 1951

### CAPE TOWN - CBD

**Tel:** (021) 914 1951

### CHELSEA

**Tel:** (021) 054 5152

### BLOEMFONTEIN

**Tel:** (051) 054 5222

### GEORGE

**Tel:** (044) 514 0004

[www.stuartgraham.co.za](http://www.stuartgraham.co.za)

