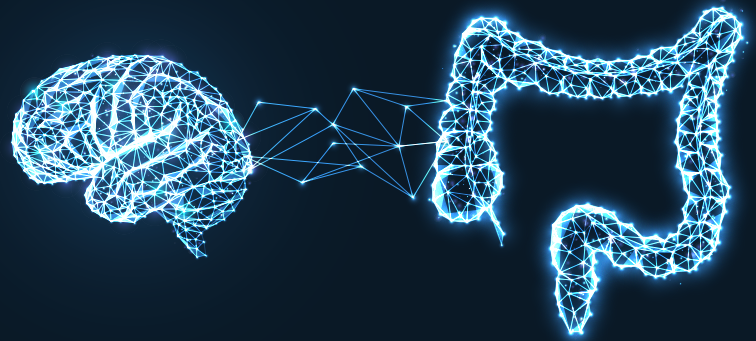


Cyclic Vomiting Syndrome

Cyclic vomiting syndrome (CVS) is a disorder of brain gut interaction defined by recurrent episodes of profuse vomiting multiple times per hour in between periods of baseline health. CVS usually begins at 3-7 years old but may begin at any age. CVS is often considered to be a migraine equivalent disorder and responds to anti-emetics and many of the same treatments used for migraine headaches.



The Children's Wisconsin CVS Program

Our program is the first and largest program of its kind in the world. We are experts in treating kids with severe, frequent vomiting episodes. Our program director is a leading expert in CVS and has authored the 2025 international guidelines for diagnosing and treating pediatric CVS. In addition, Children's Wisconsin GI program consistently ranks among the nation's best by U.S. News and World Report. Our sole focus is kids as we know that their needs are different than adults. We support the family at every stage of care. We teach the family about the child's care, digestive issues and explain what to expect. Our care team works with the family to manage the physical and emotional impacts of GI disease.



Who May Benefit From Evaluation in CVS Clinic?

- A child that has had four or more intense vomiting episodes in the past year with the episode lasting less than a week.
- Vomiting starts suddenly and repeats many times per hour.
- Patients with history of CVS who now have abdominal migraines or nausea
- Note: Patients already established with another GI provider or mucosal disease (Eosinophilic esophagitis, inflammatory bowel disease, celiac disease) may seek a second opinion with our team.

What a Patient/Family Can Expect:

- Patients will be instructed to sign up for MyChart to complete a detailed intake survey.
- After the CVS intake is approved, we call the family to schedule with one of our CVS expert providers.
- Pre-visit testing may be done to rule out malrotation. Guidance for testing options are provided for out-of-state patients.
- At the first visit, the patient could see several members of our team which include: physician, nurse practitioner, registered dietitian, nurse clinician and pediatric psychologist.
- All patients receive a comprehensive treatment plan including education and condition-specific handouts, lifestyle strategies for nervous system regulation and medications/supplements/treatment options during prodrome, warning, episode and recovery phases of CVS.
- Some patients with refractory CVS or medication side effects may be offered auricular neurostimulations treatment for their CVS and co-morbidities.
- Follow up care is based on severity, family needs and resources and at the discretion of the provider. Video visits are possible for Wisconsin patients.

Our Team



Katja Karrento, MD
Gastroenterologist



Gila Ginzburg, MD
Gastroenterologist



Kimberly Brown, PhD
Psychologist



Julie Banda, APNP
Nurse Practitioner



Mariah Rigsby, RN
Nurse Coordinator
(414) 266-3931

Learn More



Learn more about our cyclic vomiting syndrome program here:
childrenswi.org/find-care/gastroenterology-liver-nutrition/cyclic-vomiting-syndrome



Send Referrals to Central Scheduling.

- **Internal referral via Epic**
Send an ambulatory referral to Gastroenterology. Indicate CVS clinic in the notes/comments.
- **External referral via Epic**
In your instance of Epic, place an external referral to CHW GASTROENTEROLOGY. Indicate CVS clinic in the notes/comments.
- **Online ambulatory referral form**
Complete this form located in the Medical Professionals section of the Children's Wisconsin web site, childrenswi.org/refer.
- **Via fax** (414) 607-5288

