

# Children's Wisconsin ERCP, EUS and Advanced Pancreaticobiliary Care

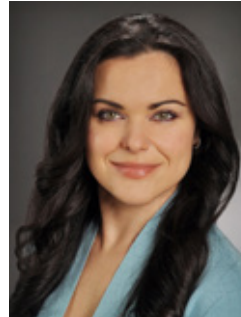


Now Offering Pediatric Endoscopic Retrograde Cholangiopancreatography (ERCP) and Endoscopic Ultrasound (EUS) at Children's Wisconsin and Advanced Pancreaticobiliary and Endoscopic Care for Children

## Meet Our Director

### Diana Lerner, MD, Director of Advanced/Interventional Gastroenterology Program

Dr. Lerner trained in Pediatric Gastroenterology at Children's Wisconsin and completed advanced fellowship training in Adult Interventional Gastroenterology at the University of Colorado Anschutz Medical Campus. She brings nationally recognized expertise to this highly specialized pediatric program.



## Comprehensive Advanced Endoscopy Services

- GI bleeding control
- Stricture management (IBD, reflux, caustic, post-surgical)
- Small bowel enteroscopy
- Polyp management in polyposis syndromes
- Endoscopic fistula closure

## Family-Centered, Nationally Recognized Care

Children's Wisconsin is one of a select few pediatric hospitals nationwide to offer comprehensive pediatric ERCP and EUS. We provide:

- Access to Ronald McDonald House accommodations for traveling families
- Child Life Services to support emotional and developmental needs
- A Family Resource Center with tools to help families thrive
- Full support from our Access Center to coordinate appointments

## Why Refer to Us

- Pediatric ERCP & EUS: Tailored procedures by a team specifically trained in pediatric advanced endoscopy.
- Streamlined Surgical Coordination: ERCP can be performed in conjunction with cholecystectomy under one anesthetic.
- Collaborative Model: Patients return to referring providers for follow-up. We ensure seamless communication and shared decision-making.

## Common Reasons to Refer for Pediatric ERCP

- Suspected or confirmed choledocholithiasis
- Evaluation and treatment of bile duct injury or stricture
- Pancreatitis with suspected ductal obstruction
- Pancreaticobiliary anomalies (pancreas divisum, choledochal cyst)
- Biliary leaks or fistulas
- Pre-/post-liver transplant biliary complications
- Clarification of abnormal imaging (MRCP/US/CT)

### Diana Lerner, MD

Director of Advanced/  
Therapeutic Endoscopy  
Program

### David Lal, MD

Medical Director of Surgery

### Brian Craig, MD

Pediatric General and  
Thoracic Surgeon

### Cara Mack, MD

Division Chief  
Gastroenterology,  
Hepatology

### Raj Prasad, MD

Medical Director Liver  
Transplant

### Gila Ginzburg, MD

Director of Pancreas  
Program, Pediatric  
Gastroenterology

### Brianna McSorley, MD

Pediatric Gastroenterology,  
Advanced Endoscopy and  
Aerodigestive Physician

### Katherine Vaidy, MD

Pediatric Gastroenterology,  
Advanced Endoscopy and  
Aerodigestive Physician

## Common Reasons to Refer for Pediatric EUS

- Recurrent or idiopathic pancreatitis
- Pancreatic cysts (congenital, pseudocyst, neoplastic concern)
- Pancreatic masses or tumors
- Congenital anomalies (pancreas divisum)
- Autoimmune pancreatitis
- Biliary Evaluation
  - Inconclusive magnetic resonance cholangiopancreatography in suspected choledocholithiasis
  - Biliary strictures, dilation or anomalies
  - Indeterminate biliary obstruction
- Subepithelial & GI Lesions
  - Gastric/duodenal masses or submucosal lesions
  - Esophageal duplication cysts
  - GI stromal tumors (GISTs)
- Lymphadenopathy/Staging
  - Mediastinal lymph nodes (for diagnosis or staging)
- Esophageal Evaluation
  - TE fistula complications
  - Post-surgical or congenital strictures
- Therapeutic EUS Procedures
  - Pancreatic cyst drainage (pseudocysts, walled-off necrosis)
  - Fine Needle Aspiration/Biopsy (FNA/FNB) of masses or lymph nodes
  - Celiac plexus block for refractory pain (pancreatitis)

### How to Refer to Diana Lerner, MD

#### Internal referrals in Epic:

Ambulatory referral to Gastroenterology

#### External referrals in Epic:

CHW GASTROENTEROLOGY CLINICS

#### Fax to Central Scheduling:

(414) 607-5288

#### Submit online form:

[childrenswi.org/referral](http://childrenswi.org/referral)

### For Urgent Concerns

#### Physician Referral and Consult Line

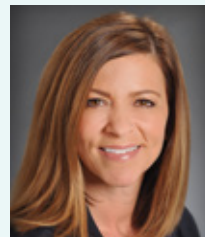
Discuss a case. • Arrange a transport. • Admit a patient.  
(414) 266-2460 or toll-free (800) 266-0366

### Physician Liaisons

- Serve as a link between Children's Wisconsin and referring providers
- Provide information about Children's Wisconsin services, including continuing education opportunities
- Facilitate solutions to referral issues



**Diane Dorow**  
(920) 370-9381  
[ddorow@childrenswi.org](mailto:ddorow@childrenswi.org)  
Northeast Wisconsin



**Lisa Magurany**  
(414) 266-4743  
(773) 636-2299  
[lmagurany@childrenswi.org](mailto:lmagurany@childrenswi.org)  
Milwaukee Metro



**Margie Berg**  
(414) 336-1342  
[mberg2@childrenswi.org](mailto:mberg2@childrenswi.org)  
Southeast Wisconsin

**Visit [childrenswi.org/liaisons](http://childrenswi.org/liaisons) to learn more.**