

# Medical Education Annual Report

2024-2025



**BEST**  
CHILDREN'S  
HOSPITALS

& WORLD REPORT  
**U.S. News**

HONOR ROLL  
2024-2025

<b>INTRODUCTION</b>	
Vice-Chair for Education	3
<b>MEDICAL EDUCATION REVENUE</b>	4
<b>UNDERGRADUATE MEDICAL EDUCATION</b>	5
<b>GRADUATE MEDICAL EDUCATION</b>	
Trainee & Program Data	6
Rotating Resident & Fellow Program	7
Fellow's Orientation Bus Tour	8
<b>TRAINEE RESEARCH &amp; SCHOLARLY ACTIVITIES</b>	9
<b>INSTITUTIONAL PROGRAMS   INITIATIVES</b>	
Pediatric Residency Program	10
House Staff Council	11
Commitment to Mental Health	12
Children's Academy of Pediatric Educators	13
Fellows College	14
E-Learning and Development	15
Continuing Education	16
<b>DIRECTORY</b>	
Office of Medical Education	18



## **DEWESH AGRAWAL, MD**

Vice-Chair for Education  
Designated Institutional Official  
Children's National Hospital

**Mission:** The highest achievements and greatest rewards of our careers in academic medicine should be the people we train, for they represent the future of our field. The educational mission of Children's National Hospital is to support the premier standard of excellence in caring for children by **preparing pediatric caregivers, both within and beyond our walls, to practice outstanding pediatric medicine** in the 21st century.

**Educational Infrastructure:** We are incredibly blessed at Children's National to not only have such diverse, passionate and talented trainees in our medical education programs, but also a **robust infrastructure to deliver that rigorous education to the 1800+ learners that come to Children's National yearly** for core parts of their training.

**Evidence-Based Education:** Just as the medicine we provide our patients should be evidence-based, we at Children's National know that the education we provide our trainees should also be evidence-based. By fostering **a community rich in collaboration, innovation, academic inquiry, mentorship, and wellbeing**, Children's National's investments in medical education allow our faculty to drive advancements in the science of pediatric education and truly embrace the mantra of **evidence-based education**.

**Training:** Children's National offers undergraduate and graduate medical education in the form of general pediatric residency training and 48 other residencies and fellowships in a variety of pediatric specialties. Our training is supported by a **committed group of faculty educators and cutting-edge mentorship in research, advocacy, and quality and safety**. Children's National is the core clerkship site for medical students at the George Washington University School of Medicine and Howard University College of Medicine.

# Medical Education Revenue

Medical Education received **\$28,003,743** to train the pediatric workforce of the future in FY25.

This represents a **18.8% increase** from the previous year.

**\$16,904,644**  
**CHGME**

**\$2,018,141**  
**GW-SMHS**

**\$309,500**  
**Howard**

**\$2,001,633**  
**DC Medicaid  
Managed Care  
Organization**

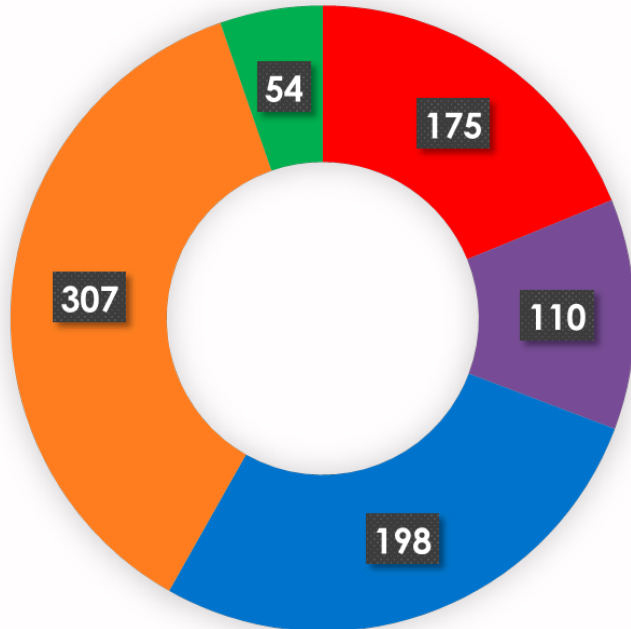
**\$997,234**  
**DC Medicaid  
Fee-For-Service**

**\$5,772,591**  
**VA Medicaid**



The largest share (60%) of medical education revenue comes from federal dollars from the Children's Hospital Graduate Medical Education (CHGME) Payment Program.

# Medical Student Education



- GW Pediatric Clerkship
- HU Pediatric Clerkship
- Other Required GW Clerkships
- GW Elective Rotations - Year 4
- PA Student Rotators

The **Pediatric Clerkship** and the **Pediatric Acting Internship** are the **highest rated** rotations by **GW medical students**.

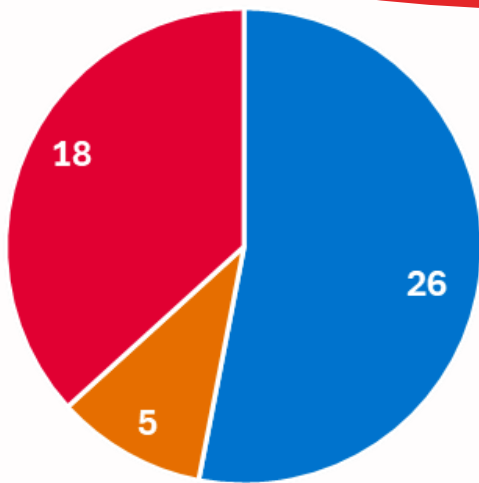
"Our medical student education team is **dedicated** to creating an **inclusive, safe** and **supportive** learning environment that **inspires medical students** to explore pediatrics as a future career. Through rotations at Children's National, students gain **hands-on experience** in caring for the pediatric patient, **learning to diagnose** and manage common childhood conditions while **embracing a patient-centered approach** to build **meaningful connections** with the children and families we serve."



**MARGARITA RAMOS, MD**  
Associate Director  
Medical Student Education

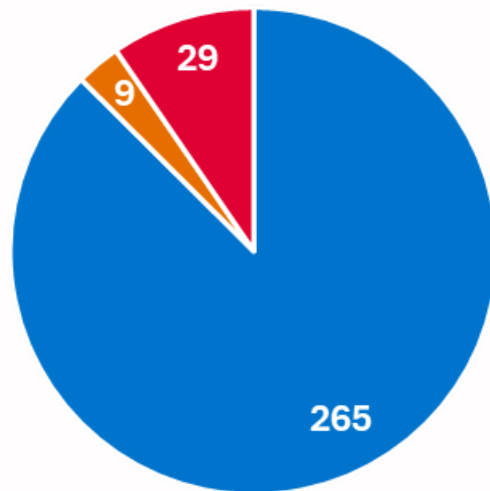
# AT-A-GLANCE

## Graduate Medical Education Trainee and Program Data



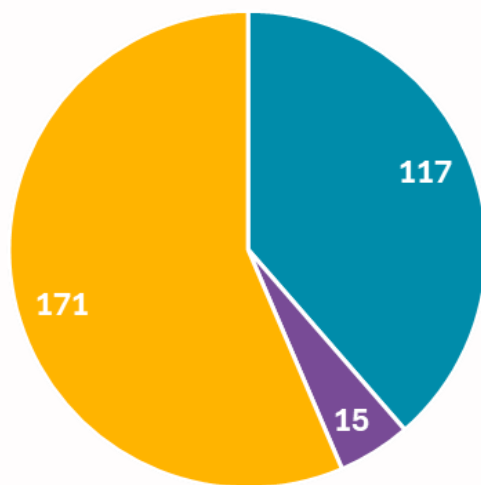
■ ACGME ■ GW-ACGME ■ non-ACGME

### Number of Programs



■ ACGME ■ GW-ACGME ■ non-ACGME

### Number of Trainees



■ Residents ■ Subspec Residents ■ Fellows

### Types of Trainees

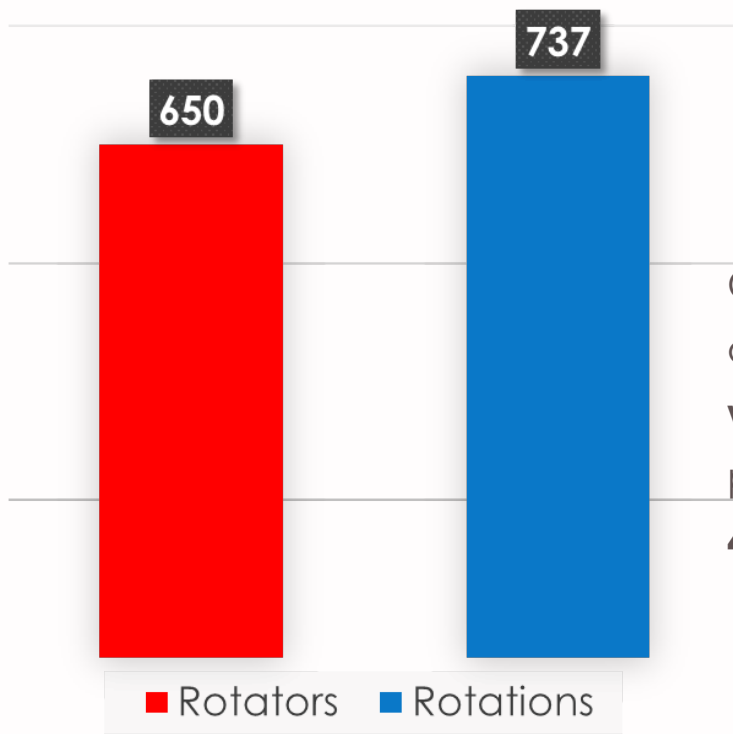
"To me, matching at Children's National meant joining an institution with a **clear commitment to excellence** in pediatric neurosurgical care and education. It represented the culmination of years of residency training and the **opportunity to continue growing** as a physician in an **environment defined by innovation, collaboration, and mentorship**. I feel fortunate to be part of a community where the focus on children and families is matched by the dedication of the faculty and staff.



**BRENNAN O'NEILL, MD**  
Neurological Surgery Fellow

# GME Rotator Program

The GME Rotator Program provides residents and fellows with diverse clinical experiences across a wide range of pediatric specialties. Through rotations in multiple departments, participants strengthen their medical knowledge and skills while gaining targeted pediatric experience within their chosen specialty.



Children's National welcomed residents and fellows from **26 institutions from within our region and nationwide** who participated in rotations across **40 specialty programs**.

*"Led by a dedicated team, our program provides residents and fellows from external institutions with exceptional clinical training within our academic pediatric programs. Alongside this training, we prioritize mentorship initiatives that nurture and support the career development of future pediatricians and pediatric subspecialists."*



**CHELSEA DOBSON, MSHAL**  
Interim Director, Medical Education

# Fellow's Orientation Bus Tour

## A Moving Community Conversation

**New in 2025**, the half-day immersive bus trip was introduced for **first-year fellows** to explore the **social and structural drivers** of child health across DC's neighborhoods. This **powerful experience** is more than a tour — it's an **introduction to the communities** many of our patients call home. As fellows visit **under-resourced areas** that reflect the **lived experiences of the families we serve**, they gain a deeper understanding of the **social determinants of health, local assets, and challenges that impact care**. The trip highlights the **voices and experiences of patients** and **encourages trainees to think critically** about their role in **research, advocacy, and care delivery**.



Participants reported 100% positive satisfaction, supporting the continuation of the bus tour for future orientations

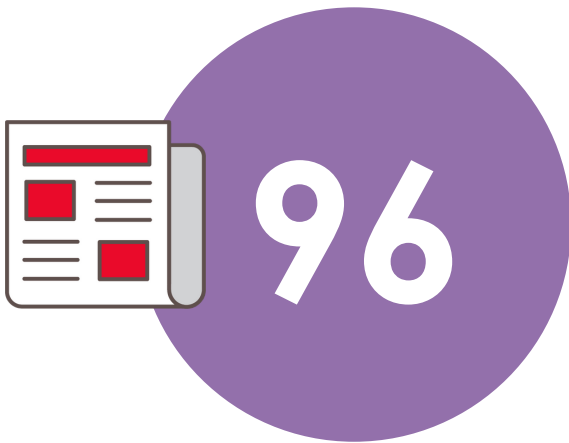


THEARC, one of the community sites on the tour

### Fellows Reported:

- Greater awareness of local resources and barriers to care
- Increased likelihood to connect patients with community supports
- Deeper understanding of environmental and socioeconomic challenges affecting treatment feasibility

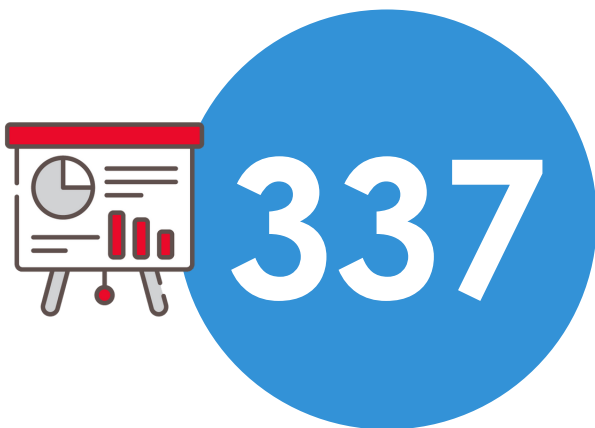
# Trainee Research & Scholarly Activities



Peer-Reviewed Publications



Other Publications



Conference Presentations



Textbook Chapters

# Pediatric Residency Program

## Academic Rigor

Each year, we adjust our curriculum and opportunities to best train pediatricians who can meet the complex and evolving needs of patients. We have revised our curriculum in alignment with regulatory requirements that prioritize the needs of children. In addition, we've strengthened our research program to meet the expand the capacity to meet the needs of children through scholarly work.

## Resident Well-Being

Resident well-being remains a priority as we adjust processes and policies to evolve the training experience to allow residents to grow with intention and resilience.

## Community Engagement

We continue to grow our Building Equity in GME (BEING) Community-Based Service Learning Curriculum to include sites across the city. During these required experiences, residents contribute meaningfully while learning from and within the community we serve.

*"As chief residents for the Pediatric Residency Program, our roles are largely focused on **program logistics** to **promote the best educational experience** for residents. Additionally, we serve on many hospital committees to **advocate for resident experience**. With the changes of the residency education curriculum we are excited to see how residents continue to grow into these new areas and become excellent pediatricians."*



# House Staff Council



Wellness Support for  
Residents and Fellows

## Partnerships and Mentorship

- Collaborated with Bear Buddies Program to connect residents and fellows with shared career interests.
- Launched new specialty interest groups for faculty, fellows, and residents.

## Engagement and Wellness

- Planned social and wellness events with Fellow's College.
- Hosted the third Fellows' Appreciation Week with daily recognition activities.

## Advocacy

- Served as a liaison for fellows and residents.
- Participated in fellowship program review committees.
- Collected ongoing trainee feedback to inform future initiatives.

## Looking Ahead

- Development of a trainee research database to foster interdisciplinary research partnerships.
- Continued emphasis on mentorship, connection, and trainee well-being.

*“As president of the House Staff Council, I’m honored to **support** our residents and fellows through **meaningful initiatives** that **promote wellness, connection, and professional growth**. The House Staff Council **remains committed** to ensuring every trainee feels **supported, valued, and recognized** for the great work they do each day.”*



**PAIGE KUBE, MD**  
HSC President

# COMMITMENT TO MENTAL HEALTH

## Trainee Resources

GWU Psychiatry Visits

GWU Resiliency & Well-Being Center

Opt-Out Mental Health Visits

Peer Support Program

Counseling Sessions via SupportLink

Employee Assistance Program



*“I am very **grateful** to serve as the provider offering **mental health sessions to the residents and fellows** who are scheduled for opt-out sessions. It is incredibly **rewarding** to **create a space** where our **future physician workforce** can **prioritize** and tend to their own **mental health/wellbeing**. I feel **honored** to be a part of a system that is continuing to make **advances in prioritizing provider wellbeing.**”*

**-Avante Smack, MD**  
Psychologist

# Children's Academy of Pediatric Educators



## AY25 Most Impactful CAPE Publications

Barber A, et al. **Adapting the Planetary Health Report Card for Graduate Medical Training Programs.** *Journal of Graduate Medical Education*. Featured in: ACGME Weekly e-Communication.

Basu S, et al. **Evolution of Pediatric Critical Care Medicine Physicians' Clinical and Academic Profile by Gender.** *Pediatric Critical Care Medicine*. Accompanied by editorial: "Women in Pediatric Critical Care Medicine: Translating the Truth in the Trend."

Kind T, et al. **Identifying Expert-Informed Social Media Entrustable Professional Activities (EPAs) for Health Professions Learners.** *Journal of Technology and Behavioral Science*.

Manuel R, Barber A, Kern J, Nicholson L, Walsh H, Zaveri P, et al. **Focused Team Engagements to Enhance Interprofessional Collaboration and Safety Behaviors Among Novice Nurses and Medical Residents.** *Pediatric Quality and Safety*.

Sran S, Walsh H, Agrawal D, Lindgren C, Manuel R, Nicholson L, Yurasek G, Zaveri P, et al. **Interprofessional Debrief on Racism, Equity, and Microaggressions (I-DREAM): Using Simulation to Change Awareness, Attitudes, and Abilities Across an Institution.** *Academic Medicine*.

"The mission of CAPE is to **promote education research and scholarship**, support excellence and innovation in teaching, advance professional development in education, and serve as a **community of practice for health professions educators** committed to achieving **optimal patient care outcomes.**"



# Fellows College

*"We aim to **build community** among fellows and **streamline educational opportunities** that are relevant to fellows in any program."*



**IAN CHUA, MD**  
Fellows College Director



**110**

Fellows Enrolled



**27**

Courses Taught



**22**

GME Programs



**19**

Quality Improvement  
Projects Conducted

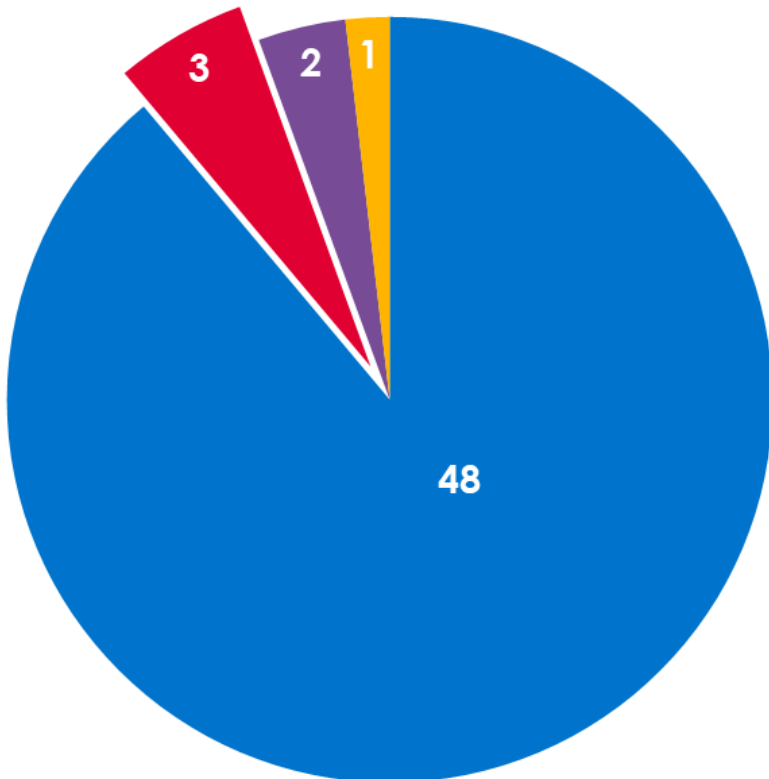
# E-Learning Program

*“Our program designs and develops engaging digital learning experiences including interactive modules, videos, and animations that strengthen trainee education and faculty development. Collaborating with departments and programs across the institution, the team supports interprofessional and global learning initiatives, advances institutional priorities, and contributes to academic publications and national conferences that elevate Children’s National Hospital’s visibility.”*

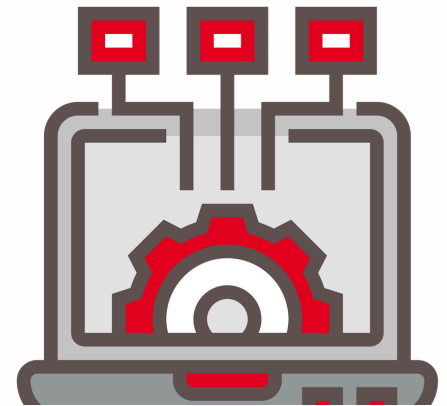


**KURT SIDENSTICK**  
E-Learning Manager

## Project Distribution



- PPN / National Networks
- CNH Internal
- Global Health
- OPENPediatrics



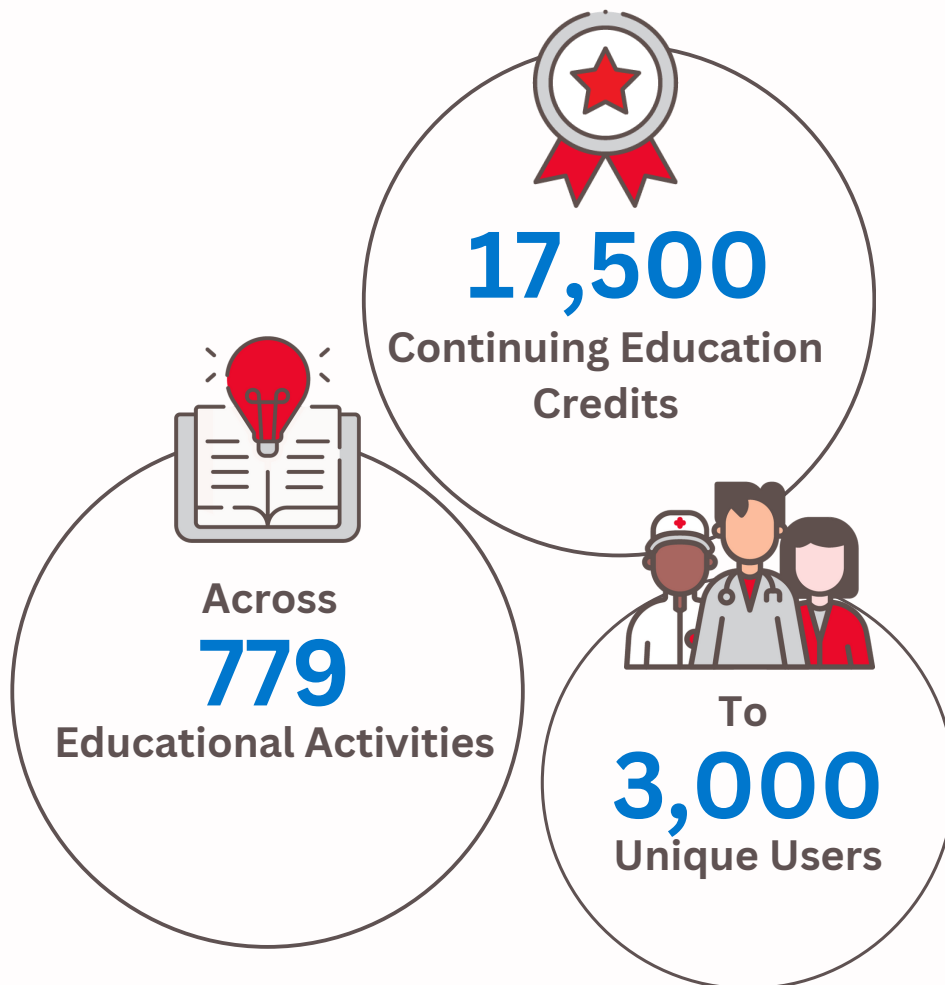
**2,091**

Users engaged in AY25 with the educational portals supported by the E-Learning Program

# Continuing Education

Children's National Hospital is a **Joint Accredited Institution** that promotes **collaboration, teamwork, and interprofessional continuing education (IPCE) across professions**. Through the Joint Accreditation team, continuing educational activities are available for **physicians, nurses, advanced practice providers, pharmacists, pharmacy techs, psychologists, and social workers** in addition to many interprofessional activities where **team members plan together to learn together**.

In AY25, our Joint Accreditation Team provided



*"Supporting the delivery of high value, evidence-based education for all health professionals at Children's National is central to our mission to provide the best care possible to the children that we serve. Not only does maintaining Joint Accreditation allow us to ensure rigor and relevance in educational programming, it also fosters interprofessional collaboration across the organization."*



**NEHA SHAH, MD**  
IPCE Co-Lead

**Our Future is Bright**  
in Medical Education  
with the help of so  
many members!





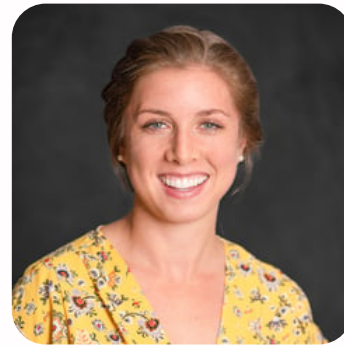
**Executive Vice President  
Chief Academic Officer**

Nathan Kuppermann, MD



**Vice-Chair for Medical Education  
ACGME Designated Institutional Official**

Dewesh Agrawal, MD



**Interim Director  
Medical Education**

Chelsea Dobson, MSHAL

## **Pediatric Residency Program**

### **Program Director**

Aisha Barber

### **Associate Directors**

Bridget Allard  
Sandra Cuzzi  
Lanre Falusi  
Edward Sepe

### **Assistant Directors**

Shaunte Anum-Addo  
Jeannie Chang-Pitter  
Andrea Hahn  
Yael Smiley  
Sam Zhao

### **Chief Residents**

Ciara Brown  
Hannah Chase  
Chidumebi Nwokolo  
Grace Quinn

### **Program Lead**

Lisa Mercado-Foster

### **Coordinator Team**

Kenya Spencer  
Carolyn Francis

## **Medical Student Education**

### **Director**

Jeremy Kern

### **Associate Directors**

Ariella Slovin  
Margarita Ramos  
Lexi McBride Crawford

### **Program Coordinators**

Wilhelmina Bradford  
Olivia Winant

## **E-Learning**

### **Sr. E-Learning Developer**

Kurt Sidenstick

### **Instructional Designers**

Holly Bloom  
Melissa Madden

## **Continuing Education**

### **IPCE Co-Leads**

Jill Horner  
Neha Shah  
Pavan Zaveri

### **Coordinator Team**

Brittany Leeman  
Isabella Greenberg  
Kelsey Dean  
Stephenie Abeysinghe  
Tamara John

## **Graduate Medical Education**

### **Managers**

Chelsea Dobson  
Jennifer Pomicter

### **Program Leads**

Lauren Kasperski  
Raneem Kadi

### **Coordinator Team**

Caroline Johnson  
Christina Lawler  
Jessica Steen  
Lakiesha Brown  
Lakisha Duncan  
Nayrouz Kadi  
Nichole Russell  
Nuri Nurlybayeva  
Tiffany Tate

## **Fellows College**

### **Director**

Ian Chua

### **Coordinator**

Isabella Greenberg

## **CAPE**

### **Director**

Priti Bhansali

### **Education Consultant**

Ellen Goldman

### **Coordinator**

Isabella Greenberg

# Kids Are Our Everything.

111 Michigan Avenue NW  
Medical Education Suite WW3.5-600  
Washington, DC 20010



**Children's National<sup>®</sup>**