



Constructing our future **together**



A MEMBER OF THE CIMIC GROUP
 **CIMIC**



CPB Contractors is the
Australasian construction
company of the CIMIC Group.

Multiple award winning project:
Caulfield to Dandenong Level Crossing Removal — Melbourne, Australia

Constructing our future together

A MEMBER OF THE CIMIC GROUP
 CIMIC



New Parallel Runway — Brisbane, Australia

A trusted and experienced partner

CPB Contractors is a leading international construction contractor with operations spanning Australia, New Zealand, Asia and Papua New Guinea.

We deliver major projects across all sectors of the construction industry, including roads, rail, tunnelling, defence, building and resources infrastructure.

Working collaboratively with clients and partners, our projects connect and enrich communities, play a key role in urban and rural development, help drive economic growth and provide vital, long-term infrastructure.

CPB Contractors works across a wide range of delivery models, including design and construct, construct only and construction management, in Alliances and Joint Ventures. It regularly delivers projects in cooperation with CIMIC's UGL and Ventia, as well as Public Private Partnerships (PPPs) in conjunction with CIMIC's Pacific Partnerships.

CPB Contractors combines the design and construction expertise and track record formerly delivered by Leighton Contractors and Thiess.

Our construction projects build:

1. Value for communities and our clients
2. Returns for our shareholders
3. Careers for our people

A world of experience

CIMIC Group is a family of industry leaders proven across diverse disciplines, sectors and environments.

With a history since 1899, the Group comprises about 32,000 people in 20 countries across Australia and the Pacific, Asia, Africa, and North and South America.

CIMIC Group delivers future-ready solutions and ensures value across the lifecycle of assets, infrastructure and resources projects.

In addition to CPB Contractors, CIMIC comprises mining and mineral processing companies Thiess (50% investment) and Sedgman, services specialist UGL, international construction contractor Leighton Asia and PPP leader Pacific Partnerships, all supported by in-house engineering consultancy EIC Activities.

CIMIC's global reach provides access to specialist design, technical support, research and technology from major shareholder HOCHTIEF and its major shareholder, the ACS Group.

Our Principles

Our approach to business is summarised in the Principles which guide our actions and act as a common unifying bond across our operations.

INTEGRITY We act with honesty and respect for ourselves, our colleagues, our clients, our suppliers and our shareholders.

ACCOUNTABILITY We take responsibility for achieving outcomes and focus on finding solutions.

INNOVATION We constantly challenge how we deliver and invest in innovation to create value. This means we are continually pushing our performance forward and evolving our offer to the market.

DELIVERY Our ability to deliver drives our reputation and credibility.

Our Code of Conduct supports our Principles and outlines the standards of behaviour we expect from our people.

SAFETY

Safety is more than a Principle – it underpins everything we do. Keeping our people safe is our absolute priority and the most important thing we do. Our safety efforts, delivered under the banner of Everyone Safe, are guided by two key programs:

- Our Safety Essentials, which target the key risks in the construction industry.
- Our One HSE Culture framework, which guides our behaviours and provides a blueprint for a strong safety culture.

OUR PEOPLE

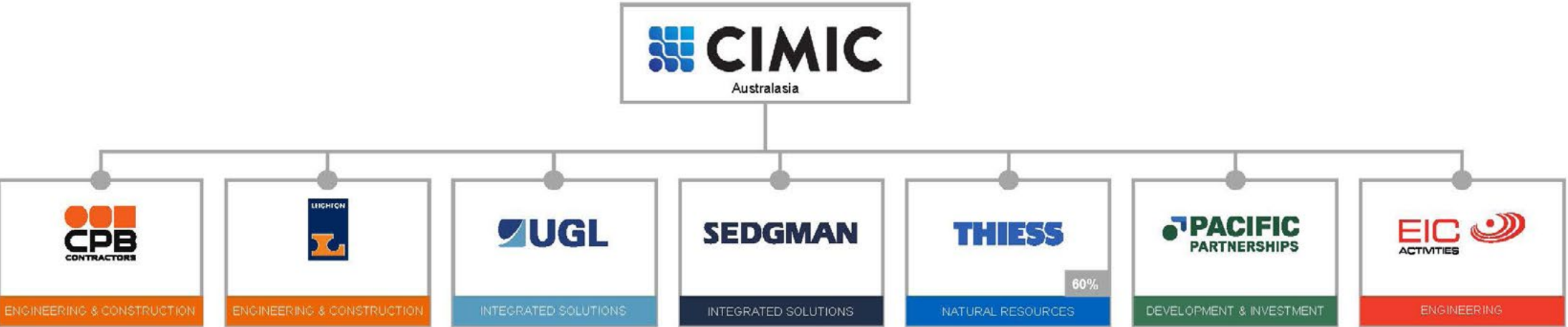
It's the experience, expertise and commitment of our people that enable us to deliver projects for our clients and infrastructure for communities. Our people build our success.

In return, we provide support to help them further develop their skills and build rewarding and fulfilling careers.

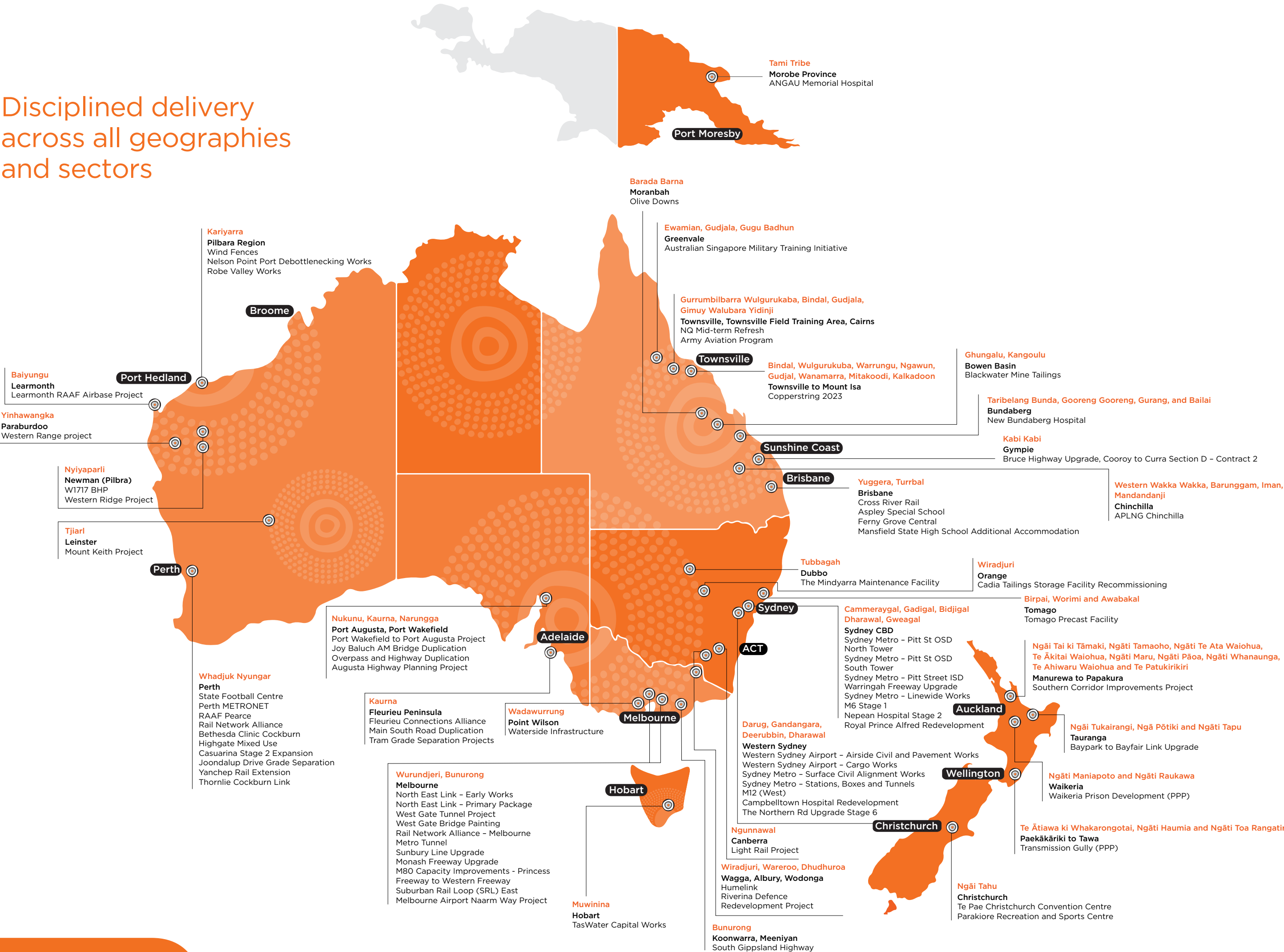
Our People First program is a package of initiatives to better support, recognise and reward our employees. It's our pledge that we will always work hard to ensure CPB Contractors is a great company to work for, where people feel commitment, pride and belonging, and where their contributions are truly valued.

At the heart of People First is an inclusive culture which values and sustains diversity.

integrity
accountability
innovation
delivery
SAFETY



Disciplined delivery
across all geographies
and sectors



Tunnelling

CPB Contractors is Australasia's largest tunnelling contractor, working across the roads, rail, water, power and utilities sectors.

Our tunnelling experience goes back to 1958, when we were the first Australian company to be awarded major construction projects on the Snowy Mountains Hydro Electric Scheme.

Since then, we have delivered more than 350 linear kilometres of next-generation tunnels that have reshaped the way cities move, supported the growth of communities and provided sustainable transport networks for generations to come.

From hard rock to flowing sands, our diverse tunnelling, underground excavation and associated civil works experience enables our people to develop innovative solutions that safely and successfully deliver projects of long-term value.

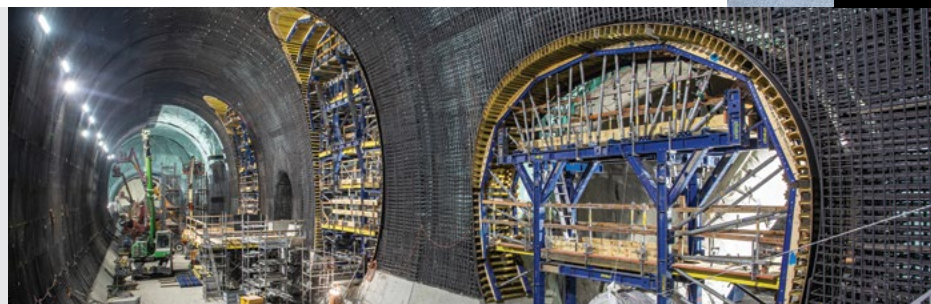
We have a history of delivering significant tunnelling projects including:

- Harbour Tunnel, NSW
- Sydney Opera House Car Park, NSW
- Epping to Chatswood Rail Link, NSW
- Lane Cove Tunnel, NSW
- WestConnex M4 East, NSW
- Airport Link Northern Busway, QLD
- Clem 7, QLD

We're currently delivering major tunnels for the WestConnex and Sydney Metro projects in Sydney, Cross River Rail in Brisbane and the West Gate Tunnel in Melbourne.



Sydney Metro Northwest — Sydney, Australia



SYDNEY METRO

New South Wales, Australia

CPB Contractors is a lead contractor delivering Australia's biggest public transport project, the Sydney Metro, for the NSW Government. CPB Contractors, in a joint venture, delivered the tunnelling and civil works for the Sydney Metro Northwest and is constructing the 15.5km twin tunnels and associated fit-out works for Sydney Metro City & Southwest. Sydney Metro showcases the capabilities and strength of the CIMIC Group, with member companies CPB Contractors, UGL, EIC Activities and Pacific Partnerships all playing key roles in its development, delivery and operations.



WEST GATE TUNNEL

Victoria, Australia

CPB Contractors, in a joint venture, is delivering Victoria's West Gate Tunnel. The design and construction works include widening the West Gate Freeway from eight lanes to twelve between the M80 Ring Road and Williamstown Road, a 2.8km eastbound tunnel and 4km westbound tunnel under Yarraville, a new bridge over the Maribyrnong River, an elevated road along Footscray Road to the Port of Melbourne, Citylink and the city's north, and new cycling and pedestrian paths.



WESTCONNEX

New South Wales, Australia

CPB Contractors, with its joint venture partners, delivered the WestConnex M4 Widening, the M4 East, New M5 (now known as the M8) and is currently involved in delivering the Rozelle Interchange for Transurban and the NSW Government. The M4 East tunnels extended the widened M4 Motorway from Homebush to Haberfield, with three lanes in each direction. Rozelle Interchange is the final stage of the WestConnex to be completed.



WestConnex M8 — Sydney, Australia

NORTHLINK

Western Australia, Australia

CPB Contractors was selected to deliver the northern section of NorthLink WA between Ellenbrook and Muchea. This involved the construction of a free-flowing dual carriageway between Ellenbrook and Muchea and new junctions at Stock Road, Neaves Road and Muchea, bridges over local roads, and separate cycling and pedestrian paths to provide safer connections between local communities.



MONASH FREEWAY

Victoria, Australia

The Monash Freeway serves Melbourne's fast growing south-east and CPB Contractors is delivering Stage 2 of the road's upgrade. Works include the addition of 36km of new lanes, an upgrade to the Beaconsfield interchange, the extension and widening of O'Shea Road and the roll out of the Freeway Lane Management System to better manage traffic flows. Construction is due for completion in 2022.



Roads

Underpinned by a strong track record built over many decades, CPB Contractors continues to deliver major road developments and upgrades that are changing the way people and cities move.

Drawing on our market-leading expertise in civil works, bridge structures, buildings and tunnelling, we provide complete infrastructure solutions that better connect communities. Each project team is supported by a core group of experts who are dedicated to minimising impacts on the local community and environment.

During construction phases, our absolute priority is the safety of our people and all road users, backed by technologically advanced traffic and road infrastructure management.

Our major completed road projects include:

- WestConnex M4 East, NSW
- Mackay Ring Road, QLD
- Logan Enhancement, QLD
- M5, M7 and M8 motorways, NSW
- Ballina and Kempsey Pacific Highway bypasses, NSW
- Perth Gateway motorway, WA
- Gateway Bridge duplication, QLD
- Inner City Bypass, QLD
- CityLink Tulla widening, VIC

We continue to deliver some of the region's most important road projects, including Transmission Gully in New Zealand and upgrades to the M1 Motorway and Pacific Highway in New South Wales.

LOGAN ENHANCEMENT

Queensland, Australia

The Logan Enhancement project involved extensive upgrades to south-east Queensland's busiest roads to improve safety and reliability for all road users. CPB Contractors designed and constructed the project with works including: realigning and widening the Logan Motorway to six lanes from the Mount Lindesay Highway to the Wembley Road ramp, widening the Gateway Extension Motorway from four to six lanes between Compton Road and the Logan Motorway, and upgrading the Wembley Road, Beaudesert Road/Mount Lindesay Highway and Compton Road interchanges. The project supports economic growth in a fast-growing region and its delivery involved strategic procurement and partnering arrangements to provide opportunities for local Indigenous workers and businesses. Construction commenced in 2017 and was completed in 2019.

CPB Contractors has delivered more than 75 rail projects and continues to play a leading role in the sector.



The first metro train crossing the Windsor Road railway bridge — Sydney, Australia



CROSS RIVER RAIL

Queensland, Australia

In Brisbane, CPB Contractors is delivering high-quality rail assets and services for the Cross River Rail. This is a new rail link from Dutton Park to Bowen Hills and includes 5.9km of twin tunnels under the Brisbane River and CBD. As members of the Pulse Consortium, CPB Contractors, UGL and Pacific Partnerships are delivering the Tunnel, Stations and Development PPP package, while as part of the Unity Alliance, CPB Contractors and UGL are delivering the Rail, Integration and Systems package.



PARRAMATTA LIGHT RAIL

New South Wales, Australia

CPB Contractors, in a joint venture, is building the Parramatta Light Rail which will support the development of Parramatta as an increasingly important business and community centre.

This city-shaping infrastructure will connect Westmead to Carlingford via the Parramatta CBD and Camellia with a 12km, two-way track.

The project includes construction of light rail track, roadworks and platforms, transport interchanges at Westmead, Parramatta CBD and Carlingford, and new light rail and pedestrian zones along Church and Macquarie Streets in the Parramatta CBD.

CPB Contractors' experience in working closely with government, local businesses and the wider community when delivering the Gold Coast and Canberra light rail projects is being applied to this project.

Rail

Over a 65 year history, our heavy and light rail projects have supported the social and economic fabric of many Australian cities and regions.

We work collaboratively with our clients and partners to deliver transformational rail projects from concept to completion, spanning design, construction, commissioning and maintenance.

Our capabilities span both greenfield and brownfield sites and include:

- Rail network upgrades
- Construction of new rail lines
- Complex projects in live operating rail environments
- Stabling facilities and depots
- Stations and interchanges

- Bridges and tunnels
- Signalling and overhead wiring

Current and recently completed projects include:

- Sydney Metro Northwest and City & Southwest, NSW
- Cross River Rail, QLD
- Parramatta, Canberra and Gold Coast Light Rail, NSW, ACT & QLD
- Level Crossing Removal, VIC
- Metronet, WA



LEVEL CROSSING REMOVAL

Victoria, Australia

With its Alliance partners, CPB Contractors completed the removal of 13 dangerous and congested level crossings across Melbourne. The Caulfield to Dandenong package removed nine level crossings and rebuilt five train stations, while a separate package removed four level crossings in St Albans, Mitcham and Blackburn.

The work involved upgrading signalling and power along more than 70km of track and the creation of new public open space. The successful completion of these upgrades involved managing complex interfaces between construction, rail operations and live traffic.



JUNEE CORRECTIONAL CENTRE

New South Wales, Australia

The NSW Government selected CPB Contractors to deliver infrastructure upgrades at the Junee Correctional Centre. The design and construct project involved expanding the existing minimum and medium security prison for men to create a total of 480 new beds, incorporating new maximum security and administration buildings, demolishing or relocating existing buildings, and refurbishing infrastructure to support the prison's increased capacity.

Located in the Riverina region of NSW, a priority for the project was creating opportunities for local Indigenous workers and businesses.



CHRISTCHURCH METRO SPORTS FACILITY

Christchurch, New Zealand

CPB Contractors is delivering the Christchurch Metro Sports Facility, the largest aquatic and indoor recreation and community venue in New Zealand. The three-building facility will cater for local and international events, with construction including a 10-lane competition pool with seating for 1,000 spectators, swim leisure area, nine indoor netball and basketball courts, and a show court with retractable seating for 2,500 spectators.

CPB Contractors has a long track record of building important infrastructure in New Zealand and is combining this local experience with international expertise as it delivers infrastructure projects that provide sustained social and economic benefits.

As well as the Christchurch Metro Sports Facility, CPB Contractors is also delivering the Te Pae Christchurch Convention Centre and is strongly focussed on providing opportunities for local businesses.



APEC HAUS

Port Moresby, Papua New Guinea

CPB Contractors, through a collaborative contracting model, delivered the prestigious APEC Haus to showcase Papua New Guinea to the world when it hosted the 2018 APEC Summit. The fast track delivery timeframe required a committed and experienced team, ready to start on contract award and deliver on time while meeting all quality, safety, environmental, community and stakeholder expectations. To ensure that the building was completed on time, CPB Contractors successfully managed accelerated pre-construction works including piling using a 50 tonne Soilmecc SF-65 CFA rotary rig, procured and shipped from Brisbane, Australia.

The architecture of the iconic building promotes the Hiri Moale Festival traditions and cultures and was designed so that, post-APEC, the building could be easily repurposed to accommodate a museum, exhibition and conference centre.



177 Pacific Highway — Sydney, Australia

Building

With a range of signature building projects across Australia, CPB Contractors has established itself as a leading building contractor.

CPB Contractors has delivered significant building projects over more than 30 years, spanning all major sectors including education, health, corporate, commercial, residential and defence.

Key to our track record is a commitment to understanding our clients' requirements and managing risks through close collaboration at every project stage.

Proven capability in designing and constructing 5 and 6 Green Star buildings gives us a leading edge in sustainable design and construction.

Our completed capital city office towers include:

- 111 Eagle Street, QLD
- 567 Collins Street, VIC
- 177 Pacific Highway, NSW

Other projects include:

- Pitt Street Integrated Station Development, NSW
- Te Pae Christchurch Convention Centre, New Zealand
- Gunyama Park Aquatic & Recreation Centre, NSW
- Correctional facilities in New South Wales, Queensland and New Zealand

Health

CPB Contractors is a major force in the development of Australia's healthcare infrastructure.

Our capabilities include:

- Health facility planning and design
- Design and construction
- ICT (Information and Communication Technologies) and eHealth
- Public Private Partnerships in conjunction with CIMIC Group company Pacific Partnerships

We have provided some of Australia's newest and most important health facilities, including the new Royal Adelaide Hospital and Sydney's Royal North Shore Hospital and Northern Beaches Hospital.

Current projects include major hospital upgrades at Nepean, Campbelltown, Wagga Wagga and Coffs Harbour.



New Royal Adelaide Hospital — Adelaide, Australia



NORTHERN BEACHES HOSPITAL

New South Wales, Australia

Following the successful delivery of Sydney's Northern Beaches Hospital, CPB Contractors is now delivering four other major hospital projects in New South Wales. These are: the Wagga Wagga Health Service Stage 3 Redevelopment, the Coffs Harbour Hospital Expansion Main Works, the Nepean Hospital Redevelopment Stage 1 and the Campbelltown Hospital Redevelopment Stage 2.

CHRISTCHURCH HOSPITAL

Christchurch, New Zealand

CPB Contractors delivered the 62,000m² Christchurch Hospital Acute Services Building in New Zealand. Adjoining the existing Christchurch Women's Hospital, the facility includes a new emergency department and operating theatres, an expanded intensive care unit, children's facilities, a state-of-the-art radiology department and rooftop helipad. CPB Contractors worked with the Ministry of Health, under a Pre-Construction Services Agreement, to develop the project's construction methodologies, program and cost. The process captured innovations and enhanced construction efficiencies.



MATER HOSPITAL

Queensland, Australia

CPB Contractors worked with Mater Health Services North Queensland on the redevelopment of the Mater Hospital at Pimlico, Townsville. Works included a dedicated new entry to the hospital, new medical imaging facilities, a new day surgery unit, and an additional four digital operating theatres in the existing Lothair Street wing. Approximately 200 local jobs were created, with 92 percent of subcontracts awarded to small and medium enterprises employing local workers.

Water

CPB Contractors delivers a range of engineering and construction services to the water industry in both urban and regional areas.

Our experience in water storage spans more than 80 years and includes over 100 dams and reservoir structures, ranging from earth rock dams, to tailing dams and concrete lined reservoirs.

We also deliver a range of water and wastewater treatment and distribution projects, including the establishment of new infrastructure and upgrades of existing pump stations and pipelines.

Among our current projects, CPB Contractors and UGL are joint venture partners in an alliance delivering a major capital works program to support and develop Tasmania's water and waste water infrastructure.



Craigieburn Sewage Transfer Hub — Victoria, Australia



PARADISE DAM Queensland, Australia

CPB Contractors was selected by Sunwater, a Queensland Government-owned water service provider, to undertake the Essential Works project at Paradise Dam, about 80 kilometres south-west of Bundaberg. The Essential Works project is a risk reduction measure designed to improve the dam's stability and protect the safety of downstream communities. The Paradise Dam, located on the Burnett River, is a key component of the Bundaberg Water Supply Scheme and the project involves lowering the primary spillway by 5.8 metres to reduce the risk of failure.



MELBOURNE WATER Victoria, Australia

In a 50:50 joint venture, CPB Contractors delivered the Western Treatment Plant – Treatment Capacity Increase project.

Designed to meet the needs of Melbourne's growing population, the project involved the design and construction of a new sewage treatment facility at Werribee with a hydraulic capacity of 140ml/day - equivalent to 56 Olympic-sized swimming pools.

The energy efficient plant was designed to integrate with the existing Western Treatment Plant, and was built with the latest advanced monitoring and controls. The scope of works included four combined bioreactor and clarifier tanks, high-voltage electrical substations and power cabling. The project achieved practical completion in April 2019 with all four of its reactors operating at design capacity.



TASWATER Tasmania, Australia

In an alliance partnership with UGL, CPB Contractors is managing the infrastructure planning, project development and delivery of capital works across TasWater's regional asset network.

The capital works program will support and deliver Tasmania's water and wastewater treatment plants, water networks, dams and water storage, and general asset renewal plans. Part of the alliance is the commitment to utilising and building local capability by prioritising the participation of local business.



CPB Contractors has decades of experience delivering significant resource projects to the highest safety standards.

Wheatstone LNG Shore Crossing — Western Australia, Australia

Resources

Our resources infrastructure projects help build the industries that power our world. CPB Contractors provides a wide range of services to the mining, oil and gas, energy, chemical and petrochemical and mining sectors. Our project teams work collaboratively with clients to deliver innovative and cost effective solutions for the resources and LNG sectors.

Our experience on pit-to-port infrastructure includes site preparation and major bulk earthworks, gas gathering infrastructure, structural, mechanical and piping installation, process facilities and supporting infrastructure such as bridges and marine works.

With many of our resources projects located in regional or remote areas, we deliver inclusive procurement solutions that provide business, employment and training opportunities to local communities.



AUSTRALIA PACIFIC LNG

Queensland, Australia

CPB Contractors is delivering a package of gas gathering and infrastructure works for the Australia Pacific LNG Project in the Surat Basin, Queensland. More than 300 coal seam gas wells are being delivered, consolidating CPB Contractors' position as a key delivery partner for the Queensland gas industry.

CPB Contractors works with local subcontractors and suppliers to make an important economic contribution to regional Queensland.



SOUTH FLANK

Western Australia, Australia

In Western Australia's Pilbara region, CPB Contractors is delivering bulk earthworks, concrete and underground services for BHP's South Flank iron ore project. The South Flank development works will help ensure that the Mining Area C precinct becomes one of the largest standalone iron ore processing centres in the world. With a strong focus on inclusion, CPB Contractors' procurement strategy provides participation, employment and training opportunities for Indigenous enterprises and local businesses.

CPB Contractors will deliver earthworks and concrete works to support the expansion of the existing rail loop and stockyard, earthworks and concrete works for a new ore processing plant, and underground services, including electrical and water services.



ROBE VALLEY WORKS

Western Australia, Australia

CPB Contractors is delivering earthworks and civil works associated with the development of Rio Tinto's Robe Valley iron ore mine in the Pilbara region of Western Australia.

Works at Robe Valley include: earthworks, construction of roads, bridges and pits, water supply infrastructure and drainage, fencing, and site establishment and demobilisation. CPB Contractors' delivery of these works will be undertaken to the highest safety and quality standards and will provide significant training and employment opportunities for local communities and Indigenous enterprises.

New energy

Partnering for strength

The transition to clean energy is rapidly evolving, and there is an urgent need to deliver the infrastructure required to supply Australia and New Zealand with sustainable and reliable energy.

Our expertise spans design, engineering and construction for wind farms, solar farms, transmission lines and other power infrastructure. These vital projects, located in regional and remote locations, are shaping people's lives for a better future and through our project delivery we are expert at creating social and economic opportunities for local communities.

We deliver large-scale renewable generation and transmission projects such as the landmark Macarthur Wind Farm and Copperstring 2032, with the same integrated and collaborative approach valued by our clients in other sectors.

Our delivery paired with our proven track record of value upgrades and asset enhancements, makes us the construction partner of choice for the energy sector.



Macarthur Wind Farm — New South Wales, Australia

MACARTHUR WIND FARM

Victoria, Australia

CPB Contractors was responsible for the Engineering, Procurement and Construction of the Macarthur Wind Farm in Victoria as part of a Vestas-led consortium.

Spanning 5,500 hectares of freehold agricultural land, the Macarthur Wind Farm crosses three properties predominantly occupied by sheep and cattle farming. CPB Contractors' scope of work comprised the associated Balance of Plant design and construction.

The farm generates up to 420 Megawatts of electricity through 140 Vestas V112-3.0MW wind turbines. This is enough energy to power approximately 220,000 average Victorian homes each year.



HUMELINK

New South Wales, Australia

HumeLink is a new transmission project which will connect Wagga Wagga, Bannaby and Maragle in regional New South Wales, and will significantly increase the capacity of the electricity network in Australia's eastern states. It is one of the state's largest energy infrastructure projects, with about 385kms of proposed new transmission lines and a range of other new and upgraded infrastructure.

The project, based on an incentivised target cost contract, will generate revenue of more than \$1.4 billion for UGL and CPB Contractors.

The UGL and CPB Contractors joint venture will be responsible for the engineering, procurement, construction and commissioning of the western portion of HumeLink, including 148kms of 500kV transmission lines, from the Snowy 2.0 connection at Maragle to Wagga Wagga. The joint venture will also construct two new 500kV substations at Gugaa and Maragle and an augmentation at Transgrid's existing Wagga Wagga 330kV substation.

POINT WILSON

Victoria, Australia

CPB Contractors has a long history of supporting the Australian Defence Force by providing technically proficient and cost-effective infrastructure solutions. CPB Contractors is delivering the Point Wilson Waterside Infrastructure Remediation project. Point Wilson is an explosives storage facility at the western end of Port Philip Bay, Victoria. The property has a 2.4km jetty and the objective of the remediation is to enable the recommencement of explosive ordnance importation operations. CPB Contractors is working closely with the Department of Defence to deliver this project in accordance with strict safety and security requirements.

RAAF BASE WILLIAMTOWN REDEVELOPMENT STAGE 2

New South Wales, Australia

CPB Contractors is experienced in managing Defence projects which are complex, governed by strict security requirements and often constructed within live operating environments. CPB Contractors is the managing contractor responsible for the planning and construction of the RAAF Base Williamtown Redevelopment Stage 2 project. Works include the construction of a new office building providing accommodation for more than 950 personnel over five levels, a new auditorium for 250 personnel, a new Army and Air Force Canteen Service facility and commercial precinct, upgrades to base entries and new road alignments inside the base, new on-grade car parks and landscaping, and adaptive reuse of existing buildings. The project is being delivered while operations at the base continue. Sustained engagement with Traditional Owners and Elders has identified opportunities for Indigenous employment and participation in the redevelopment.

RAAF AMBERLEY C-17A

Queensland, Australia

As the managing contractor responsible for the design and construction of the RAAF Amberley C-17A project, CPB Contractors upgraded the maintenance facility, aircraft apron and associated facilities. Works included building a maintenance hangar for C-17 aircraft, working accommodation for maintenance personnel, a countermeasure holding and preparation facility, aircraft parking apron, in-ground aviation re-fuelling and high-mast lighting capabilities, and the Explosive Ordnance Pallet Build Facility. This project built on our previous work as the managing contractor for the Australian Super Hornet Facilities project. The project involved coordination of third-party contractors responsible for delivering specialist plant and equipment. Works included design and construction of facilities to meet US Navy standards for intricate security separation and zoning, secure communication systems, and the installation of electrical conversion units to address the large power requirement.



Defence

With over 20 years of experience working with Defence, CPB Contractors has delivered some of Australia's most significant and complex Navy, Army and Air Force infrastructure projects. Our capabilities include:

- Design and construction
- Public Private Partnerships with CIMIC Group's Pacific Partnerships
- Telecommunications and information technology
- Asset management
- Facility management

Importantly, we ensure our projects bring broader community benefits.

We are committed to progressing diversity and inclusion, and provide training and employment opportunities for Indigenous businesses and social enterprises.

Additional Defence projects delivered include:

- Headquarters Joint Operations Command Centre, NSW
- RAAF Base East Sale Redevelopment, VIC
- Albatross Redevelopment Stage 3, NSW
- RAAF Townsville Redevelopment Stage 1 and 2, QLD

Aviation

CPB Contractors has, for more than 50 years, successfully undertaken major airport projects essential to the growth of the aviation industry.

Having recently delivered, in joint venture, the airfield works for Brisbane Airport's new parallel runway, CPB Contractors is now delivering the earthworks for the new Western Sydney International (Nancy-Bird Walton) Airport.

CPB Contractors is committed to supporting local economic development and the new parallel runway project inducted more than 3,700 people and engaged 300 subcontractors with 90% of those businesses operating from south-east Queensland.

Melbourne Airport, Terminal 4 — Victoria, Australia



WESTERN SYDNEY INTERNATIONAL AIRPORT

New South Wales, Australia

CPB Contractors, in a joint venture, is delivering the early earthworks and bulk earthworks for the construction of the new Western Sydney International (Nancy-Bird Walton) Airport. The bulk earthworks include overall topographical and drainage design for the entire airport precinct, detailed design and construction of earthworks, and drainage for the area.



MELBOURNE AIRPORT, T4

Victoria, Australia

CPB Contractors, with its wholly owned subsidiary, Broad Construction, delivered an integrated transport facility and new airline terminal as part of a capacity upgrade for Melbourne Airport. The project included the construction of a seven-storey car park, a transport interchange for buses and taxis, elevated access roads and ramps, an underground service tunnel, electrical substation and ancillary infrastructure.



BRISBANE NEW PARALLEL RUNWAY

Queensland, Australia

CPB Contractors, in a joint venture, delivered the new parallel runway at Brisbane Airport. This was one of the largest aviation projects ever undertaken in Australia and involved the construction of a 3.3km runway and 12km rigid pavement taxiway system, as well as airfield infrastructure. The runway was completed ahead of time with no disruption to existing airfield operations.



For more information please contact CPB Contractors:
Level 18, 177 Pacific Highway, North Sydney NSW 2060, Australia
T +61 2 8668 6000

CPBCON.COM.AU

© CPB Contractors | 2024