



Discharge Point 4  
 X: 327384.514  
 Y: 6260110.634

- Legend**
- Discharge Points
  - ▨ WFU Surface Premise Area - Rev45

44	05/05/26	nmunasin
<b>Rev</b>	<b>Description</b>	<b>Date</b> <b>Approved</b>

Scale 1:1,100

WARRINGAH FREEWAY UPGRADE

<b>Status</b>			
<b>Review</b>			
Original Size	A3	Drawn	GIS
Coordinate System	GDA 94 MGA ZONE 56	Designed	user
Height Datum	AHD	Date Printed	05/05/26
Filename:	WFU_Premise_Mapping_wScript		

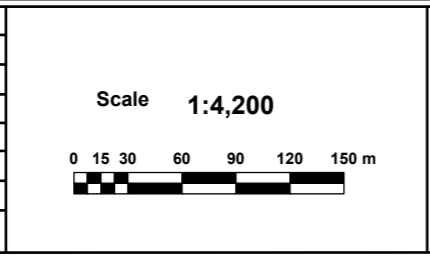


<b>WFU Premise Map (as of 24 May 2026)</b>			
Page 1			
<b>Document Number</b>			
<<001>>			
Project Number	Discipline	Document	Rev
N1098	ENV	CO	45



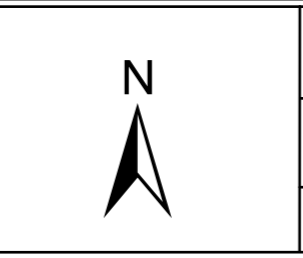
- Legend**
- Discharge Points
  - ▨ WFU Surface Premise Area - Rev45

44	05/05/26	nmunasin
<b>Rev</b>	<b>Description</b>	<b>Date</b> <b>Approved</b>



WARRINGAH FREEWAY UPGRADE

<b>Status</b>			
<b>Review</b>			
Original Size	A3	Drawn	GIS
Coordinate System	GDA 94 MGA ZONE 56	Designed	user
Height Datum	AHD	Date Printed	05/05/26
Filename:	WFU_Premise_Mapping_wScript		



<b>WFU Premise Map (as of 24 May 2026)</b>			
Page 2			
<b>Document Number</b>			
<<001>>			
Project Number	Discipline	Document	Rev
N1098	ENV	CO	45



**Legend**

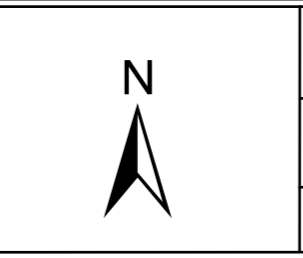
- Discharge Points
- ▨ WFU Surface Premise Area - Rev45

44	05/05/26	nmunasin	
Rev	Description	Date	Approved

Scale 1:4,200

WARRINGAH FREEWAY UPGRADE

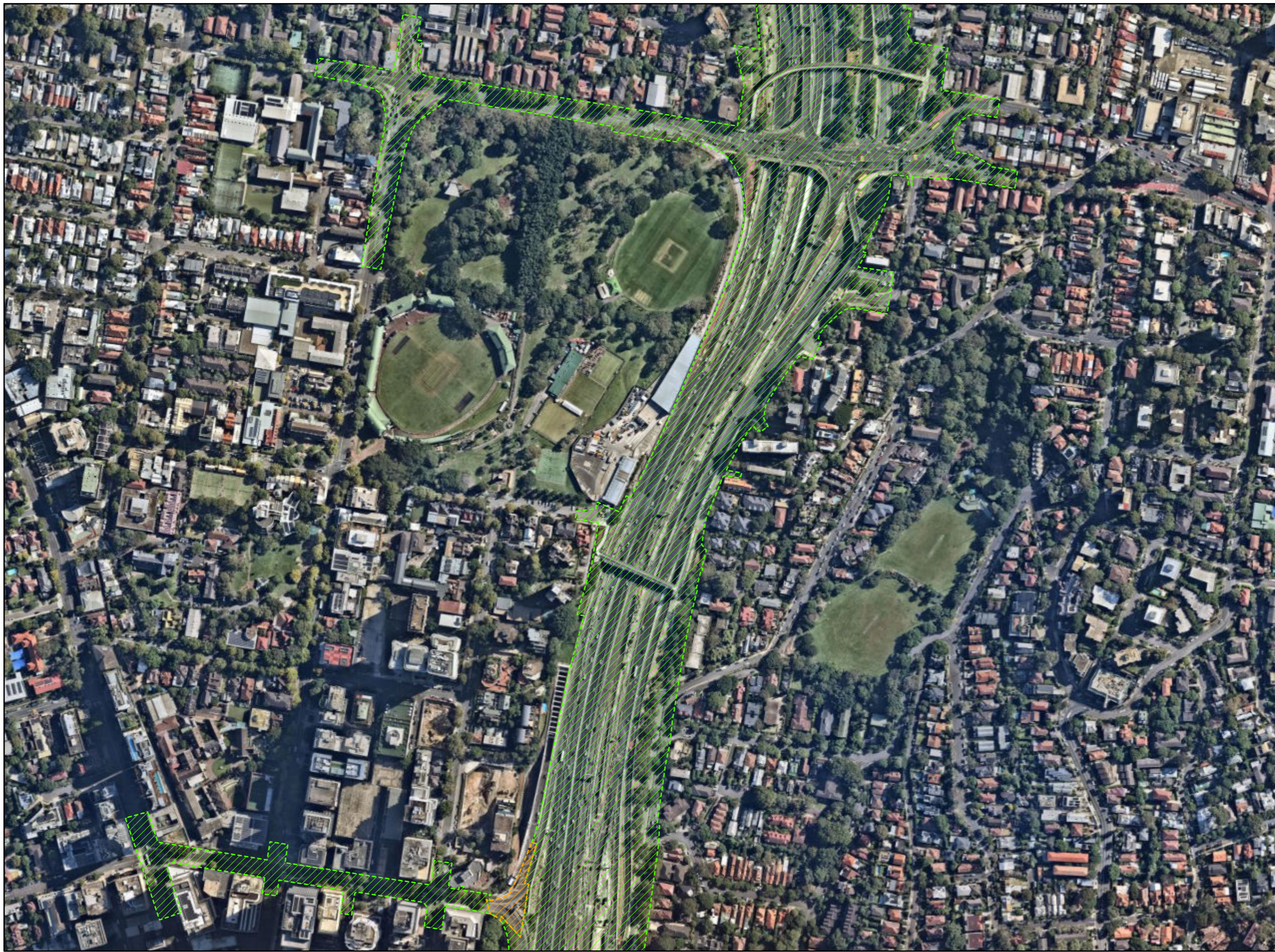
Status		Review	
Original Size	A3	Drawn	GIS
Coordinate System	GDA 94 MGA ZONE 56	Designed	user
Height Datum	AHD	Date Printed	05/05/26
Filename:	WFU_Premise_Mapping_wScript		



**WFU Premise Map (as of 24 May 2026)**  
Page 3

Document Number <<001>>

Project Number N1098	Discipline ENV	Document CO	Rev 45
-------------------------	-------------------	----------------	-----------



**Legend**

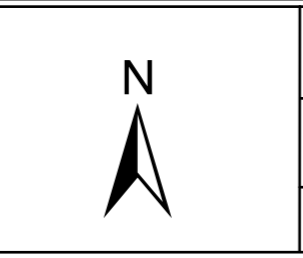
- WFU Premise Area (Added) - Rev 44
- WFU Surface Premise Area - Rev45

44	05/05/26	nmunasin
<b>Rev</b>	<b>Description</b>	<b>Date</b> <b>Approved</b>

Scale **1:4,200**

WARRINGAH FREEWAY UPGRADE

<b>Status</b>			
<b>Review</b>			
Original Size	A3	Drawn	GIS
Coordinate System	GDA 94 MGA ZONE 56	Designed	user
Height Datum	AHD	Date Printed	05/05/26
Filename:	WFU_Premise_Mapping_wScript		



**WFU Premise Map (as of 24 May 2026)**  
Page 4

**Document Number**  
<<001>>

Project Number N1098	Discipline ENV	Document CO	Rev 45
-------------------------	-------------------	----------------	-----------



**Legend**

- Discharge Points
- WFU Premise Area (Added) - Rev 45
- WFU Surface Premise Area - Rev45

Discharge Point 3  
 X: 334513.120  
 Y: 6254386.376

Discharge Point 7  
 X: 334465.481  
 Y: 6254221.680

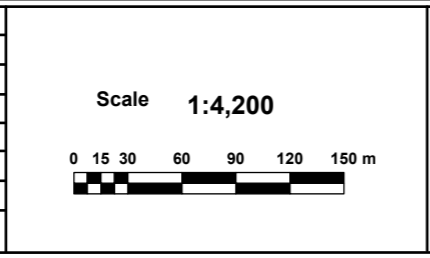
Discharge Point 8  
 X: 334465.575  
 Y: 6254194.867

Discharge Point 9  
 X: 334463.053  
 Y: 6254086.518

Discharge Point 10  
 X: 334481.082  
 Y: 6253992.057

Discharge Point 11  
 X: 334484.803  
 Y: 6253956.891

44	05/05/26	nmunasin	
Rev	Description	Date	Approved

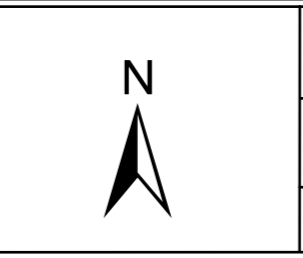


**CPB CONTRACTORS**

**DT INFRASTRUCTURE**  
 A GAMUDA Company

WARRINGAH FREEWAY UPGRADE

Status			
Review			
Original Size	A3	Drawn	GIS
Coordinate System	GDA 94 MGA ZONE 56	Designed	user
Height Datum	AHD	Date Printed	05/05/26
Filename:	WFU_Premise_Mapping_wScript		



**WFU Premise Map (as of 24 May 2026)**  
 Page 5

**Document Number**  
 <<001>>

Project Number N1098	Discipline ENV	Document CO	Rev 45
-------------------------	-------------------	----------------	-----------