



Heritage Management Sub-Plan C2B

Line-wide Works Contract Sydney Metro City & Southwest

Project number:	C600
Document number:	SMCSWLWC-SYC-1NL-PM-PLN-000375
Revision date:	20/09/2023
Revision:	5

Document Approval

	SHEQ	Project Director
Signature:		
20/09/2023	C Godwin	A Wuillemmin

Details of Revision Amendments

Document Control

The Project Director is responsible for ensuring that this Sub-Plan is reviewed and approved. The Environment and Sustainability Manager is responsible for updating this Sub-Plan to reflect changes to Environmental legal and other requirements, as required. A controlled version of this Sub-Plan will be available electronically at all Project locations.

Amendments

Any revisions or amendments must be approved by the Project Manager and/or client before being distributed / implemented.

Revision Details

Revision	Date	Prepared by	Details
A	25/11/2019	K Truscott	Issued for review. This version of this Sub-Plan addresses compliance requirements under CSSI 7400 and CSSI 8256 Planning Approvals as per the Sydney Metro Staging reports.
B	17/12/2019	A Taylor	Updated to address comments from Stakeholders .
0	13/02/2020	J Lindberg (AMBS)	Updated to Address DPE Comments – For approval
1	15/10/2020	K Truscott	Scheduled review Updates to Section 2.2 Compliance Requirements, Section 1.2 Background, Table 7 Existing Heritage Chatswood to Sydenham, Section 6.2 Heritage Unexpected Finds Protocol
2	30/09/2021	K Truscott	Scheduled review of plan and procedure Addition of REMM NHA11 to Element 4
3	12/08/2022	K Truscott	Scheduled review Update to Table 1 Summary of LW scope for Portions 2, 3 and 4 Update to Table 2 Existing Heritage Chatswood to Sydenham and Section 4.1.1 Non-Aboriginal Heritage Update to Table 3 Existing Heritage Sydenham to Bankstown
4	02/06/2023	N Nasser	Scheduled review
5	20/09/2023	T McCormick	Update to address ER and SM comments Update to Section 1.5.2 – Staging Reports Update to Section 1.5.3 – Interface Update to Section 2.3 – Removal of industry (DPE) Update to Section 4.1.2 to include Blues Point Steetscaping reference Update to Section 6.2 – Sydney Metro Unexpected Finds Procedure Update to Section 6.6 – reference to Blues Point AMR included Update to Table 6 – “or delegate” included Update to Appendix C1 to reference SMs protocol Spelling of Manager corrected across document Update to Table 7 – Chatswood, Millers Point and Blues Point Update to Element 3 – 3.2 – requirement to report NCRs

			Element 4 – SSI 7400 (CoA) E21 – Removed responsibility of design manager
--	--	--	---

Contents

Contents	4
List of Tables	5
List of Figures	5
HMSP COMPLIANCE MATRIX	6
Glossary	8
PART A - OVERVIEW.....	11
1. Plan Overview	11
1.1 Purpose	11
1.2 Background	11
1.3 Heritage Management Objectives and Targets	11
1.4 Plan Structure	12
1.5 Plan Applicability, Staging and Interface	12
1.6 Stakeholder Consultation	14
1.7 Revision and Update	15
1.8 Related Documents	15
2. Legal and Other Requirements	17
2.1 Legislation	17
2.2 Compliance Requirements	17
2.3 Relevant Guidelines and Standards	17
3. Roles and Responsibilities	18
3.1 Systems Connect Team	18
3.2 Specialist Consultants	19
4. Existing Environment.....	19
4.1 Chatswood to Sydenham	19
4.2 Sydenham to Bankstown	23
5. Aspects and Impacts.....	25
6. Heritage Management	26
6.1 Heritage Mitigation Measures	26
6.2 Heritage Unexpected Finds Protocol	27
6.3 Heritage Protection.....	28
6.4 Archival Recording	28
6.5 Archeological Excavation	28
6.6 Final Heritage Report	29
PART B – IMPLEMENTATION.....	30
7. Elements and Expectations	30
Element 1: Training.....	31
Element 2: Monitoring, Compliance, Records and Reporting	32
Element 3: Auditing, Review and Improvement	33
Element 4: Project Specific Requirements.....	34
Construction Environmental Management Framework – Sydney Metro City & Southwest (2017)	34
Planning Approval SSI 7400 – Chatswood to Sydenham	35
Planning Approval SSI 8256 – Sydenham to Bankstown	40
Appendix C1: Aspect Specific Procedures / Protocol.....	45
Appendix C2: Agency Consultation.....	46

List of Tables

Table 1 - LWW Heritage Targets.....	12
Table 2 - Plan Structure	12
Table 3 - Summary of LW scope for Portions 2, 3 and 4	13
Table 4 - Sub-Plan agencies consultation according with Staging Reports	15
Table 5 - Interaction with other project documents	16
Table 6: Key Roles, authority and responsibility	18
Table 7 Existing Heritage Chatswood to Sydenham.....	19
Table 8 Existing Heritage Sydenham to Bankstown	23
Table 9: Summary of overall aspects and potential impacts.....	25
Table 10: Controls used to manage Heritage	26

List of Figures

HMSP COMPLIANCE MATRIX

Construction Environmental Management Framework – Sydney Metro City & Southwest (2017)		
Condition	Requirement	Reference
3.4a	Subject to Section 3.3(b) and Section 3.2(b) the Principal Contractor will prepare issue-specific environmental sub plans to the CEMP and SMP which address each of the relevant environmental impacts at a particular site or stage of the project. Issue specific sub plans will include: (vi) Heritage management	This Sub-Plan
10.2a	Principal Contractors will develop and implement a Heritage Management Plan which will include as a minimum:	
(i)	Evidence of consultation with the Registered Aboriginal Parties and the NSW Heritage Council;	Section 1.6 Appendix C2
(ii)	Identify initiatives that will be implemented for the enhancement of heritage values and minimisation of heritage impacts, including procedures and processes that will be used to implement and document heritage management initiatives;	Part B and Appendix C1
(iii)	The heritage mitigation measures as detailed in the environmental approval documentation;	Section 6.1
(iv)	The responsibilities of key project personnel with respect to the implementation of the plan;	Section 3
(v)	Procedures for interpretation of heritage values uncovered through salvage or excavation during detailed design;	Design requirement
(vi)	Procedures for undertaking salvage or excavation of heritage relics or sites (where relevant), consistent with and any recordings of heritage relics prior to works commencing that would affect them;	Appendix C1
(vii)	Details for the short and / or long term management of artefacts or movable heritage;	Section 6.2
(viii)	Details or management measures to be implemented to prevent and minimise impacts on heritage items (including further heritage investigations, archival recordings and/or measures to protect unaffected sites during construction works in the vicinity);	Section 6.2, 6.3 & 6.4
(ix)	Procedures for undertaking unexpected finds, including procedures for dealing with human remains;	Section 6.2 and Appendix C1
(x)	Heritage monitoring requirements; and	Element 2:
(xi)	Compliance record generation and management.	Element 2:

Planning Approval SSI 7400 - CoA		
Condition	Requirement	Reference
C3	The following CEMP sub-plans must be prepared in consultation with the relevant government agencies identified for each CEMP sub-plan and be consistent with the CEMF and CEMP referred to in Condition C1: (g) Heritage	This Sub-Plan, Section 1.6
C4	The CEMP sub-plans must state how:	
a)	the environmental performance outcomes identified in the EIS as amended by the documents listed in A1 will be achieved;	Section 6
b)	the mitigation measures identified in the EIS as amended by documents listed in A1 will be implemented;	Section 6
c)	the relevant terms of this approval will be complied with; and	Element 4:
d)	issues requiring management during construction, as identified through ongoing environmental risk analysis, will be managed.	Section 6
C5	The CEMP sub-plans must be developed in consultation with relevant government agencies. Where an agency(ies) request(s) is not included, the Proponent must provide the Secretary justification as to why. Details of all information requested by an agency to be included in a CEMP sub-plan as a result of consultation and copies of all correspondence from those agencies, must be provided with the relevant CEMP sub-plan.	Section 1.6 and Appendix C2
C6	Any of the CEMP sub-plans may be submitted to the Secretary along with, or subsequent to, the submission of the CEMP but in any event, no later than one (1) month before commencement of construction.	Section 1.6
C8	Construction must not commence until the CEMP and all CEMP sub-plans have been approved by the Secretary. The CEMP and CEMP sub-plans, as approved by the Secretary, including any minor amendments approved by the ER, must be implemented for the duration of construction. Where the CSSI is being staged, construction of that stage is not to commence until the relevant CEMP and sub-plans have been approved by the Secretary.	Section 1.6

Planning Approval SSI 8256 - CoA		
Condition	Requirement	Reference
C3	The CEMP Sub-plans must be prepared in consultation with the relevant government agencies identified for each CEMP Sub-plan and be consistent with the CEMF and CEMP referred to in Condition C1: d) Heritage	This Sub-Plan, Section 1.6
C4	The CEMP Sub-plans must be prepared in accordance with the CEMF.	Element 4:
C5	Details of all information requested by an agency to be included in a CEMP Sub-plan as a result of consultation, including copies of all correspondence from those agencies, must be provided with the relevant CEMP Sub-Plan	Section 1.6 and Appendix C2
C6	Any of the CEMP Sub-plans may be submitted along with, or subsequent to, the submission of the CEMP but in any event, no later than one (1) month before Construction.	Section 1.6
C7	Construction must not commence until the CEMP and all CEMP Sub-plans have been approved by the Planning Secretary. The CEMP and CEMP Sub-plans, as approved by the Planning Secretary, including any minor amendments approved by the ER must be implemented for the duration of Construction. Where Construction of the CSSI is staged, Construction of a stage must not commence until the CEMP and CEMP Sub-plans for that stage have been approved by the Planning Secretary.	Section 1.6

Glossary

Abbreviations	Definition
AARD	Archaeological Assessment & Research Design Report
ACHA	Archaeological and Cultural Heritage Assessment
Aboriginal	Within NSW, it is preferred to use the term Aboriginal as this reflects the overwhelming majority of the community residents in NSW, with no implied limitation on this applying to the persons from the Torres Strait Islands
AHIMS	DPE's Aboriginal Heritage Information Management System
AMBS	AMBS Ecology & Heritage
AMS	Archeological Method Statement
Approved Plan	Means a plan approved in accordance with the Conditions of Approval for the Sydney Metro City and Southwest project.
ARMP	Archaeological Relics Management Plan
BPS	Bulk Power Supply
C2B	Refers to the combined project areas defined under CSSI 7400 and CSSI 8256 for the delivery of SMCSW
CCS-LW	Community Communications Strategy for the delivery of the Line-wide Works between Chatswood and Bankstown
CEMF	Construction Environmental Management Framework
CEMP	Construction Environmental Management Plan
CIMIC	Construction Infrastructure Mining & Concessions
CoA	Conditions of Approval as per State Significant Infrastructure Planning Approvals as issue by the NSW Department of Planning and Environment, relevant staging reports and as listed in Schedule E3 of the Line-wide Works Contract, (ITC 600)
CPB	CPB Contractors Pty Limited
DPI	Department of Primary Industries (including Agriculture NSW, Fisheries NSW and NSW Office of Water)
DPE	NSW Department of Planning & Environment
EDR	Excavation Director's Report
EIS	Environmental Impact Statement completed as part of the assessment for Planning Approvals CSSI 7400 and 8256
EMS	Environmental Management System (integrated as part of the PMS)
Environment and Sustainability Policy	Statement by an organisation of its intention and principles for environmental and sustainability performance.
Environmental aspect	Defined by AS/NZS ISO 14001:2004 as an element of an organization's activities, products or services that can interact with the environment.
Environmental impact	Defined by AS/NZS ISO 14001:2004 as any change to the environment, whether adverse or beneficial, wholly or partially resulting from an organization's environmental aspects.

Abbreviations	Definition
Environmental incident	An occurrence or set of circumstances, as a consequence of which pollution (air, water, noise, and land) or an adverse environmental impact has occurred or is likely to have occurred.
Environmental Issue	An occurrence or set of circumstances where Environmental Harm or Non-compliance could occur if not rectified.
Environmental Non-Compliance (NC)	A breach of an Environmental Requirement originating from Planning Approvals, Environment Protection Licenses, lease agreements, and other requirements documented in environmental management plans.
Environmental objective	Defined by AS/NZS ISO 14001:2004 as an overall environmental goal, consistent with the Environment Policy, that an organisation sets Line-wide to achieve.
Environmental Representative (ER)	The environmental responsibilities of the Environmental Representative include (but are not limited to) the following (under SSI 5931): <ul style="list-style-type: none"> - evaluate and advise on compliance with environmental requirements - monitor the implementation of environmental management plans for the Project or related activities - approve/reject minor amendments to the Construction Environment Management Plan
Environmental target	Defined by AS/NZS ISO 14001:2004 as a detailed performance requirement, applicable to the organisation or parts thereof, that arises from the environmental objectives and that needs to be set and met in order to achieve those objectives.
EP&A Act	Environmental Planning and Assessment Act 1979
Hold Point	Activities which are not to proceed without objective review and approval by the nominated authority.
LW	Line-wide
LW Works	Line-wide Works (contract scope under ITC 0600)
NSW Heritage Council	Heritage Council of NSW or its delegate
PAD	Potential Archaeological Deposit
PMS	Project Management System
OEH	(NSW) Office of Environment and Heritage - As of 1 July OEH was dismantled, and its functions have since been absorbed by DPE. Any reference to OEH will be covered by DPE. Historic Heritage is now Heritage, Community Engagement, Department of Premier and Cabinet (Heritage NSW).
REMM	Revised Environmental Mitigation Measures
S2B	Sydenham to Bankstown
SC Project Environmental Representative	Refers to Systems Connect Environment and Sustainability Manager or someone delegated by him to perform a task, release a hold point or approve a document
SEP	Site Environment Plan
SHR	State Heritage Register
SM	Sydney Metro
SMCSW	Sydney Metro City & Southwest
SMNW	Sydney Metro North West
SMTF	Sydney Metro Train Facility (formerly known as Rapid Transit Rail Facility)
SMTF South	Sydney Metro Train Facility South

Abbreviations	Definition
Spoil	All material generated by excavation into the ground
SSI 5931	Approval of Application SSI 5931 provided for construction and operation of The Rapid Transit Rail Facility, now known as the Sydney Metro Train Facility (SMTF)
CSSI 7400	Approval of application SSI 7400 provides for construction and operation of a metro line approximately 16.5 kilometers long (of which approximately 15.5 is in underground rail tunnels) between Chatswood and Sydenham (C2S) including construction of a tunnel under Sydney Harbour, links with the existing rail network, seven metro stations and associated ancillary infrastructure. The proposal is declared as Critical State Significant Infrastructure (CSSI)
CSSI 8256	Approval of application SSI 8256 provides for construction and operation of a metro line, approximately 13 kilometres long between Marrickville and Bankstown (S2B), including ten metro stations and associated infrastructure
SWTC	Scope of works and technical criteria
TfNSW	Transport for New South Wales
UGL	UGL Engineering Pty Limited

PART A - OVERVIEW

1. Plan Overview

1.1 Purpose

The purpose of the Heritage Management Sub-Plan (this Sub-Plan) is to describe how Systems Connect will minimise and manage impacts on heritage throughout the delivery of the Sydney Metro City & Southwest (SMCSW) Line-wide Works (LW) between Chatswood and Bankstown (C2B). Line-wide (LW) also referred to as the project, will be delivered by Systems Connect (a CPB Contractors and UGL Engineering joint venture).

This Sub-Plan has been prepared to address the requirements of relevant Minister for Planning's Conditions of Approval (CoA), including SSI 7440 and SSI 8256, the Revised Environmental Mitigation Measures (REMMs), applicable legislation, the Environmental Impact Statements (EIS), contractual requirements including Schedule C1 Scope of Works and Technical Criteria (SWTC) of ITC 600, the Sydney Metro Construction Environment Management Framework (CEMF) and the LW Works' Environment Protection Licences. Further details about the above-mentioned compliance requirements are provided in Section 2 and in the Construction Environmental Management Plan – C2B (SMCSWLWC-SYC-1NL-PM-PLN-000033).

1.2 Background

The LW Works will potentially impact heritage during the civil construction works. These potential impacts will require management and mitigation in accordance with relevant state legislation and government policies.

This Sub-Plan is based on the comprehensive assessment and analysis work performed for the two EIS that cover LW scope under CSSI 7400 and CSSI 8256. All heritage investigations, clearance and reporting required under the Planning Approvals has been completed by other contractors prior to Systems Connect taking control of the sites.

LW construction impact areas are predominantly within areas where works have been completed by other SMCSW Contractors. Civil works will occur within both engineered fill and natural material. As such there is some (limited) potential for artefacts to be encountered during construction either within the imported material or in native soils.

Consistency Assessments have been approved for changes to bulk power supply routes at Artarmon, Surry Hills and Canterbury. The findings of any additional investigations or assessments, completed as a result of changes to the scope of Line-wide Works will be incorporated into this document and associated procedures.

Further detail of the existing environment is provided in Section 4.

1.3 Heritage Management Objectives and Targets

Systems Connect's objectives for management of heritage during delivery of LW Works are aligned with the CEMF which states that the following heritage management objectives will apply to construction:

- Embed significant heritage values through any architectural design, education or physical interpretation
- Minimise impacts on items or places of heritage value
- Avoid accidental impacts on heritage items
- Maximise worker's awareness of Aboriginal and non-Aboriginal heritage.

Based on the project requirements (listed in Section 2 of this Sub-Plan and in the CEMP), the findings of project risk management processes and the potential impacts to heritage, the following targets have been set. Any deviation from the targets will result in Project Management immediately implementing corrective actions (refer to Element 3:).

Table 1 - LWW Heritage Targets

Metric/Measure	Objective	Timeframe	Accountability
Incidents of damage to heritage items, places or values	Zero Incidents	At all times	Project Director
No complaints from the Regulators or traditional owners as a result of the works undertaken	Zero Complaints	At all times	Project Director

1.4 Plan Structure

Table 2 - Plan Structure

Plan Structure	Details
Part A: Overview	<p>This Part defines:</p> <p>Section 1. Purpose, Background, Objectives & Targets, Structure, Applicability Staging & Interface, Stakeholder Consultation, Plan Revision & Update and Related Documents</p> <p>Section 2. Legal and other requirements</p> <p>Section 3. Roles and responsibilities</p> <p>Section 4. Existing Environment</p> <p>Section 5. Aspects and Impacts</p> <p>Section 6. Heritage Management</p>
Part B: Implementation	<p>This section outlines in detail the key processes and systems to support implementation of environmental management outcomes for the project:</p> <p>Element 1. Training</p> <p>Element 2. Monitoring, Compliance, Records and Reporting</p> <p>Element 3. Auditing, Review and Improvement</p> <p>Element 4. Project Specific Requirements</p>
Part C: Appendices	<p>C1 – Aboriginal and Historic Heritage Unexpected Finds Protocol C2B</p> <p>C2 – Agency Consultation</p>

1.5 Plan Applicability, Staging and Interface

1.5.1 Applicability

This Heritage Management Sub-Plan is applicable to Portions 2, 3 and 4 of LW, which includes all works associated with the corridor from Chatswood to Bankstown (C2B) including any changes or modifications to the Project scope and boundary since the initial EIS and subsequent Modifications. This plan is also applicable to any changes to the scope and boundary of LW as addressed in subsequent Consistency Assessments. Revision and update of this plan is addressed further in Section 1.7.

This Sub-Plan is not applicable to Portion 1, SMTF expansion works. The SMTF expansion works have a separate series of Construction Environmental Management Plans and are approved under Planning Approval SSI 5931. An overview of LW scope and portions is provided in the CEMP C2B (SMCSWLWC-SYC-1NL-PM-PLN-000033).

Table 3 below provides a summary of the scope of works covered under each Portion.

Table 3 - Summary of LW scope for Portions 2, 3 and 4

LW Portions	Scope
Portion 2 – SMTF South (LW are Principal Contractor)	<p>Construction of Sydney Metro Trains Facility South, in Marrickville, including:</p> <ul style="list-style-type: none"> • Civil works • Track system comprising stabling, shunting and maintenance roads • Infrastructure maintenance facilities including a maintenance workshop, siding, materials storage facilities and parking • Train maintenance facilities • Overhead wiring for new track systems • Mechanical, hydraulic and electrical services for the facility • Administration buildings • Groundwater treatment plant
Portion 3 – Chatswood to Sydenham tunnels and stations works (LW are Principal Contractor for Northern Dive, Artarmon Substation, BPS routes, tunnels, Sydenham Station and a small area within Barangaroo site)	<p>Tunnel and station works including the systems, services and building works within, and required for operation of the tunnels, Barangaroo crossover cavern, trackway and the Southern Dive.</p> <p>Open Northern Dive works including civil, structural and track systems work to incorporate SMCSW with SMNW systems.</p> <p>Construction of Artarmon bulk power supply substation.</p> <p>Bulk Power Supply works including cable routes of 33kV feeders from:</p> <ul style="list-style-type: none"> • Ausgrid's Willoughby Sub-Transmission Substation to the Artarmon bulk supply infeed substation • Ausgrid's Surry Hills Sub-Transmission Substation to the bulk supply infeed substation within Waterloo Station
Portion 4 – Sydenham to Bankstown works (LW are Principal Contractors for Substation sites and BPS routes)	<p>Bulk Power Supply works including cable routes of 33kV feeders from Ausgrid's Canterbury Sub-Transmission Substation to the Campsie bulk supply infeed substation.</p> <p>Southwest corridor power works from Sydenham to Bankstown, including:</p> <ul style="list-style-type: none"> • a HV Reticulation System • a Traction Power System • a Power Control System • an Earthing and Bonding System, Electrolysis Control Measures and Lightning Protection

1.5.2 Staging

In order to address the staged nature of SMCSW project, Sydney Metro has developed two Staging Reports:

- Chatswood to Sydenham Staging Report (May 2021)
- Sydenham to Bankstown Upgrade Staging Report (June 2023)

The latest versions of the Staging Reports are available on the Sydney Metro Website Document Library.

Each Staging Report defines the Conditions of Approval (CoA), Revised Environmental Management Mitigation Measures (REMM's) and the Construction Environmental Management Framework (CEMF) requirements that are applicable to the Line-wide stage of works, with responsibility shared between Sydney Metro and Systems Connect as per the Deed. If a requirement is applicable or partially applicable, in the Staging Report and Deed, it is included in the Element 4: table of Project Specific Requirements and addressed in this Sub-Plan.

The EIS assessments addressed potential project impacts at all Project stages, including impacts during tunnel and station excavation and construction, being completed by other contractors. These activities will be in varying stages of completion at each worksite, by the time LW Works

commence at each location (in accordance with the Staging Reports). As outlined in this section any variation to LW that is not addressed in the EIS will be subject to additional heritage and/or consistency assessments.

1.5.3 Interface

This Sub-Plan is applied when Systems Connect is the Principal Contractor at any SMCSW site. When Systems Connect is not the Principal Contractor, they will conduct their activities in accordance with the Principal Contractors' Regulatory and contractual obligations.

Systems Connect will liaise and work with other SMCSW delivery contractors to plan and carry out all works, aiming to achieve this objective and ensure any potential cumulative impacts are managed and harm to the environment does not occur.

1.6 Stakeholder Consultation

Agencies to be consulted for the development of this Sub-Plan, incorporating the Aboriginal and Historic Heritage Unexpected Finds Protocol C2B, include the Heritage Council (or delegate) and relevant Council(s). Planning Approval consultation obligations, in line with the Staging Reports, are outlined in Table 4 below.

Systems Connect has engaged with agencies in developing and finalising this Sub-Plan. An agency workshop was held on 6/11/2019, at which attendees were provided with a project briefing and information on the management plan review and approval process. Following finalisation, all the agencies were provided a copy of this Sub-Plan.

Relevant local councils potentially affected by LW Works between Chatswood to Bankstown (C2B) were consulted with, and include:

- Willoughby Council
- North Sydney Council
- City of Sydney Council
- Inner West Council
- Canterbury Bankstown Council.

All comments received from stakeholders and Systems Connect's response to these comments are included in Appendix C2.

Section 10.2 (a) of the CEMF states that Principal Contractors will develop and implement a Heritage Management Plan which will include as a minimum: (10.2 a(i)) evidence of consultation with Registered Aboriginal Parties.

As the LW Contractor is a follow-on contractor any known impacts have been addressed by previous SMCSW Contractors. Delivery of LW is not likely to impact any Cultural Heritage. Any interaction with suspected Cultural Heritage is managed in accordance with the Unexpected Finds Protocol. Details of Consultation with RAPs in the event of an unexpected find is outlined in Section 1.6.1.

Following approval of this plan, consultation with Sydney Metro, Heritage Council, the Heritage Working Group, the RAPs and relevant agencies will continue as required and relevant.

This sub-plan will be submitted to the Planning Secretary at least one month before commencement of construction, be approved prior to commencement of works and be implemented for the duration.

Any feedback received from stakeholders will be included in Appendix C2 as part of the periodic review of this Plan.

Table 4 - Sub-Plan agencies consultation according with Staging Reports

Plan	CSSI	Contractor' s Internal Review & Approval	Sydney Metro Review	Government Agency / Stakeholder Consultation	Relevant Councils	ER Review & Endorsement prior to Secretary Submission	Secretary Review & Approval
Heritage Management Sub-Plan	7400	✓	✓	✓	✓	✓	✓
	8256	✓	✓	✓	✓	✓	✓

1.6.1 Stakeholder Consultation for Aboriginal Unexpected Finds

In the event that Aboriginal heritage assessments or investigations are required, including unexpected heritage finds, those Registered Aboriginal Parties consulted on the Chatswood to Sydenham and on the Sydenham to Bankstown projects will be consulted. Metro Aboriginal Focus Group will also be consulted as required in the event of unexpected finds.

1.7 Revision and Update

The document review process ensures that environmental documentation including this Sub-Plan is updated as appropriate for the specific works that are occurring on-site. This includes the management review process described in Element 3:.

This Sub-Plan was developed to address the heritage requirements throughout LW scope of works between C2B and it will be updated as the project progresses through each Portion.

Amendments would typically include those that:

- are editorial in nature e.g. staff and agency/authority name changes
- do not increase the magnitude of impacts on the environment when considered individually or cumulatively
- do not compromise the ability of the Project to meet approval or legislative requirements
- do not result in new environmental impacts.

Details of the plan and protocol revisions that will occur to address Planning Approval compliance requirements, across the delivery of all portions of LW, are provided in the project CEMPs.

Minor amendments to the Heritage Management Sub-Plan will be submitted to the Environmental Representative (ER) and Sydney Metro for review and approval. Minor amendments would generally include changes to systems or processes.

Where the change will have the potential to result in an additional environmental or community impact that the ER cannot approve, then the plan would be submitted to DPE for review and approval.

Where necessary amendments to this Sub-Plan will also be provided to relevant stakeholders for review and comment and/or forwarded for approval.

1.8 Related Documents

This plan is a Sub-Plan of the Construction Environmental Management Plan - C2B (SMCSWLWC-SYC-1NL-PM-PLN-000033). Table 5 shows the interrelationship of this Sub-Plan with other project plans and documents.

Table 5 - Interaction with other project documents

Document Name	Reference
Noise and Vibration Management Sub-Plan – C2B SMCSWLWC-SYC-1NL-PM-PLN-000032)	Describes noise and vibration control measures to be implemented during the LW Works, some of which will mitigate potential heritage impacts.
Aboriginal and Historic Heritage Unexpected Finds Protocol C2B (SMCSWLWC-SYC-1NL-EM-PRO-002656)	Workflow procedure addressing key requirements for management of heritage risk by the project delivery team. Includes flow diagrams with required steps to manage unexpected heritage or human remains finds during construction and hold points for implementing controls.
Site Environmental Plans (SEPs)	SEPs highlight environmental constraints at a worksite (including any heritage considerations), and detail key elements of the site set-up including environmental controls or heritage protection measures.
Community Communications Strategy LW (SMCSWLWC-SYC-1NL-PM-PLN-000027)	The CCS-LW defines requirements for consultation with all project stakeholders.

2. Legal and Other Requirements

2.1 Legislation

Key legislation relevant to Heritage management includes:

- Environment Protection and Biodiversity Conservation Act 1999
- Environmental Planning and Assessment Act 1979
- Heritage Act 1977
- National Parks and Wildlife Act 1974

Refer to the Construction Environmental Management Plan - C2B (SMCSWLWC-SYC-1NL-PM-PLN-000033) for details of the relevant legislation.

2.2 Compliance Requirements

Line-wide Works (C2S) have been assessed and approved via a number of applications under the Environmental Planning and Assessment Act 1979 (EP&A Act) and are classified as Critical State Significant Infrastructure (CSSI):

- SSI 7400. Sydney Metro City & Southwest Chatswood to Sydenham and
- SSI 8256. Sydney Metro City & Southwest Sydenham to Bankstown.

Detailed environmental assessments have been carried out to gain the necessary planning approvals.

As the Project is CSSI, the approval and permit requirements of the *Heritage Act 1977* and the *National Parks and Wildlife Act 1974* have been assessed under Part 5.1 of the *Environmental Planning and Assessment Act 1979*. This is addressed in the Project Planning Approval and no separate permits will be required for the works.

Element 4: Project Specific Requirements contains a summary of the key compliance requirements for heritage management which are applicable to the LW Works. This includes relevant Conditions of Approvals and associated mitigation measures to be implemented, as well as requirements under the Construction Environmental Management Framework (CEMF).

This plan will also deliver compliance with contractual requirements including Schedule C1 Scope of Works and Technical Criteria (SWTC) of ITC 600 and any Environmental Protection License (EPL) issued to the Project. The EPA issued EPL 21423 to the Project on 31 July 2020 for the scheduled activity "Railway activities - railway infrastructure construction", which applies to certain prescribed premises between Chatswood Dive Site and Sydenham Dive Site.

2.3 Relevant Guidelines and Standards

Additional guidelines relating to the management of heritage include:

- NSW Heritage Council's Criteria for Assessment of Excavation Directors (2011)
- NSW Heritage Council's Assessing Significance for Historical Archaeological Sites and Relics (2009)
- NSW Heritage Office Archaeological Assessments (1996)
- Department of Planning and Environment (DPE - formally OEH)'s Code of Practice for Archaeological Investigation of Aboriginal Objects in New South Wales (DECCW, 2010)
- DPE's Aboriginal cultural heritage consultation requirements for proponents 2010 (DECCW 2010)
- NSW Heritage Council's Photographic Recording of Heritage Items Using Film or Digital Capture (2006) guidelines
- NSW Heritage Office Guidelines for Management of Human Skeletal Remains (1998)

3. Roles and Responsibilities

3.1 Systems Connect Team

The roles and responsibilities of key Systems Connect Personnel with respect to heritage are detailed in Table 6.

Table 6: Key Roles, authority and responsibility

Role	Authority and responsibility
Project Director	<ul style="list-style-type: none"> Managing the delivery of the LW Works including overseeing heritage management Act as the Contractor's Representative
Environment and Sustainability Manager (or delegate)	<ul style="list-style-type: none"> Oversee the preparation, approval and implementation of this Sub-Plan Oversee the implementation of all heritage management initiatives including coordinating Systems Connect's response to complaints regarding heritage impacts Manage the ongoing compliance with conditions of approval
Environmental Advisor	<ul style="list-style-type: none"> Assist the Environment and Sustainability Manager in the development and implementation of this Sub-Plan and other site specific environmental documents Implement the environmental induction program Conduct and participate in environmental audits The investigation and close out of environmental complaints Assist in the implementation of site environmental controls Undertake environmental monitoring and inspections
Stakeholder and Community Manager	<ul style="list-style-type: none"> Manage notifications and consultation for heritage Liaise with the Environment and Sustainability Manager in responding to resolving complaints regarding heritage impacts
Commercial Manager	<ul style="list-style-type: none"> Ensure that relevant heritage management requirements are considered in procuring materials and services
Integration and Interface Manager	<ul style="list-style-type: none"> Ensures that relevant Planning and contract requirements are addressed via the interface process
Engineering Manager	<ul style="list-style-type: none"> Ensure that relevant heritage management requirements are addressed and incorporated in design development
Construction Manager	<ul style="list-style-type: none"> Manage the delivery of the construction process in relation to heritage management for their work activity in conjunction with the Environment Manager and Environment Coordinators Ensure compliance with this Sub-Plan and associated procedures
Area Managers	<ul style="list-style-type: none"> Manage construction in relation to heritage management for their work activity in conjunction with the Environment and Sustainability Manager and Environment Coordinators Implement and ensure compliance with this Sub-Plan
Environment Coordinator	<ul style="list-style-type: none"> Assist the Environment and Sustainability Manager and Area Managers in implementing this Sub-Plan Oversee training on heritage including inductions, toolbox talks and specific technical training on monitoring equipment Monitoring and reporting on noise and vibration compliance Manage, review and continual improvement of this Sub-Plan
Superintendents	<ul style="list-style-type: none"> Construction delivery in relation to environmental management and compliance in conjunction with the Environment and Sustainability Manager and Environment Coordinators Authority to direct personnel and/or subcontractors to carry out actions to avoid or minimise unintended environmental impacts Implement and ensure compliance with this Sub-Plan

Project Managers Project Engineers Site Engineers Supervisors	<ul style="list-style-type: none"> • Implement and monitor onsite environmental management and compliance measures, including all required mitigation measures, across all sites in conjunction with Environmental Coordinators • Undertake site inspections, provide support to report on environmental performance • Assist the Area Managers and Site Superintendents in implementing this Sub-Plan
--	---

Further details on roles and responsibilities are provided in the Construction Environment Management Plan C2B.

3.2 Specialist Consultants

AMBS Ecology & Heritage (AMBS) has been engaged as the Specialist Heritage Consultant for the LW Works. Jennie Lindbergh, AMBS Director Historic Heritage and Christopher Langeluddecke, AMBS Director Aboriginal Heritage are suitably qualified and experienced and are the nominated Excavation Directors to provide services required to address Planning Approval and statutory obligations including:

- Development and review of EMS documents for heritage management
- Management and reporting of unexpected finds of Aboriginal and historic heritage.

4. Existing Environment

4.1 Chatswood to Sydenham

4.1.1 Non-Aboriginal Heritage

The Archaeological Assessment & Research Design Report (AARD) attached to the EIS identified that SMCSW would have a direct physical impact on three State heritage listed properties – Millers Point & Dawes Point Village Precinct (minor impact), Martin Place Railway (moderate impact) and Sydney Terminal and Central Railway Station Group (moderate to major impact) and seven local heritage items. There would also be indirect and potential indirect impacts to around eight State heritage listed properties and around 28 local heritage listed properties (i.e. vibration and visual changes).

Due to SMCSW Project staging, management of these heritage items is being completed by other contractors, prior to LW commencing.

The AARD included an assessment of potential impacts on heritage items and archaeological remains along the proposed power supply routes. Power supply routes will predominantly consist of trenches around 1m wide and 1.5 – 2m deep, within the road reserve. Previously disturbed areas, such as where utilities have previously been installed, have low archaeological potential. As noted above additional information obtained following completion of investigations of bulk power supply route investigations will be used to update this plan when investigations and assessments are completed.

The preliminary assessment of heritage items, potential impacts and significance from the AARD is provided in Table 7 below. The table also notes where these items are not within LW scope.

Table 7 Existing Heritage Chatswood to Sydenham

Item	Listing ¹	Heritage Significance	Heritage Impact and Magnitude
Chatswood			
Chatswood zone substation No.80 (Ausgrid)	Willoughby LEP	Local	Impacts to fabric and visual impacts are expected to be minor. Not within or adjacent to LW construction impact area.
Mowbray House	Willoughby LEP	Local	Impact to Mowbray House to be avoided.

¹ SHR: State Heritage Register; RNE: Register of the National Estate; LEP: local environmental plan; s170: Listing under section 170 (of the Heritage Act 1977)

Item	Listing ¹	Heritage Significance	Heritage Impact and Magnitude
Archaeological resources	N/A	Potentially Local	Potential for locally significant archaeology in undisturbed sections of the road corridor.
Crows Nest and North Sydney			
Archaeological resources	N/A	Potentially Local. Evidence of early occupation and development of the locality.	Potential for locally significant archaeology in undisturbed sections of the road corridor. Works in the road corridor are not within LW scope of work.
Blues Point			
Archaeological resources Blues Point Waterfront Group Blues Point Tower Sydney Opera House	North Sydney LEP	Local World Heritage	Potential for locally significant archaeology in undisturbed areas. Within conservation area. Impacts to fabric and visual impacts are likely to be temporary and minor. Located within the Buffer Zone of the World heritage listed Sydney Opera House and the views and vistas of the locally listed Blues Point Waterfront Group and Blues Point Tower. LW taking over established site from the TSE Contractor at this site. Streetscaping works - impacts to heritage items to be avoided. The Streetscape work zone is divided into areas of low and moderate archaeological potential for both Aboriginal and Historical.
Millers Point to Darling Harbour			
Millers Point and Dawes Point Village Precinct	SHR	State	Within conservation area. Impacts to fabric and visual impacts are likely to be temporary and minor. LW scope within this precinct was a laydown area to support shaft access.
Millers Point Conservation Area	SHR; Dept of Housing s.170; Sydney LEP LEP; RNE	State	Within conservation area. Impacts to fabric and visual impacts are likely to be temporary and minor. LW scope within this precinct was a laydown area to support shaft access
Archaeological resources	N/A	Potentially Local to State. Potential for evidence of former gas works, reclamation, Girard's flour Mill, former wharfs and industry and 1860s residential.	Potential for locally significant and State significant archaeology in undisturbed sections of the road corridor. No LW scope within this area.
King Street Wharf to Martin Place			

Item	Listing ¹	Heritage Significance	Heritage Impact and Magnitude
Tank Stream including tanks and tunnels	SHR Sydney Water s170	State	<p>The power supply route would cross the Tank Stream on Margaret Street near its intersection with George Street. The Tank Stream has a curtilage of three meters from the structure. Trenching may be up to two meters deep and therefore may encroach into the curtilage of the item. The Tank Stream Conservation Management Plan states that in this area the Tank Stream is generally around three to five meters below the current ground surface. Impacts within the curtilage of the Tank Stream would be avoided.</p> <p>Power supply in this location is not within LW scope. No works by LW in this area.</p>
Richard Johnson Square including monument and plinth	Sydney LEP	Local	<p>Impacts to fabric and visual impacts are likely to be temporary and minor.</p> <p>No LW scope in this area.</p>
Bennelong Stormwater Channel	Sydney Water s170	Local	<p>The feeder line would cross the alignment of the Bennelong Stormwater Channel at Hunter, Bligh, Elizabeth, Philip and Macquarie Streets. Impacts within the curtilage of this item would be avoided.</p> <p>Feeder line is not part of LW scope.</p>
Archaeological resources	N/A	Potentially Local to State. Potential evidence of early occupation and development of Sydney including drains, early road surfaces.	<p>Potential for locally significant and State significant archaeology in undisturbed sections of the road corridor.</p> <p>Works in the road corridor are not within LW scope of work.</p>
Pitt Street to Surry Hills			
O'Hear's Stairs, Frog Hollow Reserve	City of Sydney LEP	Local	<p>The Bulk Power Supply route will go through the reserve. Impacts to the stairs will be avoided.</p>
Archaeological resources	N/A	<p>Potentially Local to State.</p> <p>Potential evidence of early occupation and development of Sydney including drains, early road surfaces.</p> <p>The approved consistency assessment (8/04/2020) for the revised route through Surry Hills provides</p>	<p>Potential for locally significant and State significant archaeology in undisturbed sections of the road corridor.</p> <p>The approved consistency assessment (8/04/2020) states that:</p> <p>"The approved Heritage Management Sub-Plan – C2B and Aboriginal and Historic Heritage Unexpected Finds Protocol C2B will adequately address the non-indigenous heritage risks for the adjusted route."</p>

Item	Listing ¹	Heritage Significance	Heritage Impact and Magnitude
		the following non-indigenous heritage assessment: “The proposed works would be undertaken in developed and previously disturbed areas of Surry Hills and Artarmon. As such, the potential of encountering areas of archaeological significance is low.”	
Pymont to Pitt Street			
Former Pymont Power Station Administrative building (42 Pymont Street) including interiors	City of Sydney LEP	Local	Impacts to fabric and visual impacts are expected to be minor. No LW scope within or adjacent to this building.
Archaeological resources	N/A	Potentially Local to State. Potential evidence of early occupation and development of Sydney including drains, early road surfaces.	Potential for locally significant and State significant archaeology in undisturbed sections of the road corridor. Sections of the feeder route around Pymont are reclaimed land and would have low archaeological potential. Market Street alignment has not changed since the 1810s so there is some potential for intact early remains. Works within or adjacent to the road corridor and drainage network at this location are not within LW scope of work.

Archaeological Method Statements (AMS) were prepared for the Tunneling and Stations Excavation Contractor for the Chatswood to Sydenham section of the project and all historical archaeological investigations and excavations have been completed. An AMS has been prepared and implemented by AMBS for Systems Connect to complete streetscaping works for North Sydney Council at Blues Point.

4.1.2 Aboriginal Heritage

The Chatswood to Sydenham Aboriginal Cultural Heritage Assessment (ACHA) states that construction of the project would not impact any previously identified Aboriginal heritage sites within the assessed project area. The ACHA Further identified that Blues Point, Barangaroo, Martin Place, Pitt Street, Central Station, Waterloo, and Marrickville project sites had potential to retain subsurface Aboriginal heritage items.

Aboriginal heritage items were subsequently identified during TSE construction works at the Blues Point and Waterloo Project sites. As per the requirements of the Project approval, archaeological excavations were undertaken at those Project sites, in conjunction with the RAPs, to recover Aboriginal heritage objects prior to TSE works proceeding. Additional Aboriginal heritage impact mitigation works are required within the Blues Point Streetscaping scope of works with archaeological monitoring required in areas of moderate potential.

Again, due to project staging, initial ground disturbance will be completed by other contractors in almost all project locations, prior to commencement of LW Works.

Works along the proposed power supply routes at Artarmon and Surry Hills would involve trenching to a depth of about two metres. Preliminary Aboriginal Heritage Information Management System (AHIMS) searches indicate that no Aboriginal sites are present along the proposed power supply routes. However, in locations where there has been no previous ground disturbance, these activities could affect areas with archaeological potential.

4.2 Sydenham to Bankstown

4.2.1 Non-Aboriginal Heritage

Heritage listed items and conservation areas in the EIS study area (defined as a 25 metre buffer around, and including, the project area) consist of those listed on the SHR, local environmental plans, and/or State agency Section 170 Registers. No items listed on National or World heritage lists were identified.

Heritage listed items within and adjoining the project area include:

- Five items listed on the State Heritage Register
- 32 locally listed items - of these items, 15 are listed by local environmental plans, four are listed by various State agency Section 170 registers, and 11 are listed by both
- Two locally listed heritage conservation areas.

A summary of heritage items within the SMCSW project areas is provided in Table 8 below, extracted from Technical Paper 3 Non-Aboriginal Heritage Assessment. This table also identifies any potential impact associated with delivery of LW.

Most of the heritage listings are associated with existing railway stations. Line-wide Works between Sydenham and Bankstown includes construction of 5 traction substations, which are not located at the stations. Station upgrade works will be conducted by other contractors. Works in the stations themselves by Systems Connect will be limited to installation of small package substations within the station site using franna crane to lift into place and hand tools. The pad footings will be constructed by station contractors. Other works within the rail corridor will include installation of services in conduits installed by other contractors.

A desktop assessment has been conducted, comparing the locations of the five traction substations with the locations of listed heritage items and conservation areas in the EIS (Section 14.2.2). The Dulwich Hill traction substation is adjacent to the South Dulwich Hill Heritage Conservation Area (C29). The Canterbury, Campsie, Lakemba and Punchbowl traction substation locations are in the rail corridor, isolated from any heritage items/areas.

The route of the Bulk Power Supply feeder line was not assessed during the EIS and is the subject of a Consistency Assessment (11/09/2019). The proposed works would be undertaken in previously disturbed areas. As such, the potential of encountering areas of archaeological significance is low. However, there are a number of locally significant buildings listed on the LEP Heritage Register (Schedule 5 – Environmental Heritage) which are located in proximity of the proposed BPS route. This plan will be updated to include the findings of the assessment following completion of all design investigations.

Table 8 Existing Heritage Sydenham to Bankstown

Item	Listing ²	Heritage Significance	Heritage Impact and Magnitude
Sydenham to Bankstown			
Sydenham Railway Station Group	SHR (01254) RailCorp S.170 Heritage and Conservation Register (4801154) Marrickville LEP 2011 (I286)	State	Not impacted by LW
Marrickville Railway Station Group	SHR (01186) RailCorp S.170 Heritage and Conservation Register	State	Not impacted by LW

² SHR: State Heritage Register; RNE: Register of the National Estate; LEP: local environmental plan; s170: Listing under section 170 (of the Heritage Act 1977)

Item	Listing ²	Heritage Significance	Heritage Impact and Magnitude
	(4801091) Marrickville LEP 2011 (I89)		
Stone house, including interiors	Marrickville LEP 2011 (I114)	Local	Not impacted by LW
Dulwich Hill Railway Station Group	RailCorp S.170 Heritage and Conservation Register (4801909)	Local	Not impacted by LW
South Dulwich Hill Heritage Conservation Area	Marrickville LEP 2011 (C29)	Local	Not impacted by LW
Hurlstone Park Railway Station Group	RailCorp S.170 Heritage and Conservation Register (4802051) Canterbury LEP 2012 (I124)	Local	Not impacted by LW
Hurlstone Park Railway Underbridge	RailCorp S.170 Heritage and Conservation Register (4805737) Canterbury LEP 2012 (I126)	Local	Not impacted by LW
Canterbury Railway Station Group	SHR (01109) RailCorp S.170 Heritage and Conservation Register (4801100) Canterbury LEP 2012 (I67)	State	Not impacted by LW
Canterbury (Cooks River) Underbridge	RailCorp S.170 Heritage and Conservation Register (4801568) Canterbury LEP 2012 (I72)	Local	Not impacted by LW
Canterbury (Cooks River/Charles St) Underbridge - Main Line	RailCorp S.170 Heritage and Conservation Register (5062566)	Local	Not impacted by LW
Campsie Railway Station Group	RailCorp S.170 Heritage and Conservation Register (4801101) Canterbury LEP 2012 (I40)	Local	Not impacted by LW
Belmore Railway Station Group	SHR (No. 01081) RailCorp S.170 Heritage and Conservation Register (4801084) Canterbury LEP 2012 (I11)	State	Not impacted by LW
Post-war bus shelter and public lavatories	Canterbury LEP 2012 (I29)	Local	Not impacted by LW
Lakemba Railway Station Group	RailCorp S.170 Heritage and Conservation Register (4801916) Canterbury LEP 2012 (I143)	Local	Not impacted by LW
Wiley Park Railway Station Group	RailCorp S.170 Heritage and Conservation Register (4801946) Canterbury LEP 2012 (I159)	Local	Not impacted by LW
Punchbowl Railway Station Group	RailCorp S.170 Heritage and Conservation Register	Local	Not impacted by LW

Item	Listing ²	Heritage Significance	Heritage Impact and Magnitude
	(4802009) Canterbury LEP 2012 (I155)		
Bankstown Railway Station Group	RailCorp S.170 Heritage and Conservation Register (4802067) Bankstown LEP 2015 (I3)	Local	Not impacted by LW
Bankstown Parcels Office (former)	RailCorp S. 170 Heritage and Conservation Register (4802067) Bankstown LEP 2015 (I4)	Local	Not impacted by LW

4.2.2 Aboriginal Heritage

The Sydenham to Bankstown EIS confirmed that no previously identified Aboriginal sites were present within the assessed Project area. No Aboriginal places declared under section 84 of the National Parks and Wildlife Act, or Aboriginal places of heritage significance defined by the *Standard Instrument – Principal Local Environmental Plan*, are located within or near the project area. Due to the extent of previous disturbance within the project area, the ACHA determined that archaeological potential is only likely to occur in areas that have not been subject to extensive sub-surface disturbance. The archaeological significance of the project area within the existing rail corridor is considered to be low as a result of the high levels of ground disturbance.

Two areas with potential to retain subsurface Aboriginal heritage objects were identified during the assessment. S2B PAD01 is located within Guide Park in Belmore, outside of the project area, and would not be impacted. S2B PAD02 is within a small park between Punchbowl Road and Urunga Parade in Punchbowl. As S2B PAD02 will be impacted by the Sydney Metro City and Southwest works, a program of test and salvage archaeological excavations are required prior to any groundbreaking works taking place in this area. However, S2B PAD02 will not be impacted by the Line-wide Works.

The Canterbury to Campsie BPS line was not included in the EIS assessment, as all works would be undertaken within existing road corridors in areas of previous disturbance. It was identified that no registered Aboriginal heritage sites are located in the vicinity of the proposed BPS alignment, and that trenching associated with the feeder route would be unlikely to impact Aboriginal objects.

5. Aspects and Impacts

The key aspects and potential impacts in relation to the overall management of heritage during the LW Works are listed in Table 9 below.

Table 9: Summary of overall aspects and potential impacts

Aspects	Potential Impacts
<ul style="list-style-type: none"> Excavation Works. Trenching for installation of utilities. Sub station footings and foundations in SMTF South 	<ul style="list-style-type: none"> Removal of archaeological sub surface deposits that could potentially contain historic and Aboriginal artefactual material or relics resulting in complete or partial destruction of sites
<ul style="list-style-type: none"> Modifications to Design and Construction Methodology 	<ul style="list-style-type: none"> Change to the construction footprint resulting in impacts to areas not previously assessed to be affected

6. Heritage Management

6.1 Heritage Mitigation Measures

Controls that are adequate to manage heritage and to reduce risk to the lowest acceptable rating achievable are implemented before any relevant works commence. The heritage mitigation measures to be implemented during the pre-construction and construction phase of LW Works are listed in Table 10 below.

Table 10: Controls used to manage Heritage

Mitigation Measures	Accountability
Pre-Construction	
Aboriginal stakeholder consultation is to continue as required in accordance with the DPE Aboriginal Cultural Heritage Consultation Requirements for Proponents 2010.	Stakeholder and Community Relations Manager Heritage Consultant
The project design will minimise adverse impacts to heritage buildings, elements, fabric, spaces and vistas that contribute to the overall heritage significance of the Bankstown Line.	Design Team Manager
Site Establishment	
When LW gain access to a site, any known heritage items in the vicinity will be shown on Site Environmental Plans, and protection measures such as installing physical delineation/flagging, screens/hoardings would be implemented as required, to retain and protect.	Environment Coordinator Construction Manager
General Construction	
During pre-work briefings, employees will be made aware of the unexpected finds protocols and obligations under Project approvals.	Environment Coordinator
Methodologies for the removal of existing structures and construction of new structures will be developed and implemented during construction to minimise direct and indirect impacts to other elements within the curtilages of the heritage items, or to heritage items located in the vicinity of works.	Environment and Sustainability Manager Construction Team
If potential Aboriginal or historic heritage items are uncovered during the works, all works in the immediate area will cease, and the unexpected finds protocol will be implemented.	Site Supervisors Environment and Sustainability Manager Heritage Consultant
During construction, if any historical heritage sites of state significance will be affected, professional archaeological investigation, excavation, and reporting will be undertaken.	Environment and Sustainability Manager Heritage Consultant
All works to conserve, protect or remove significant heritage fabric would be undertaken by skilled tradespeople with experience working on heritage sites, in consultation with an appropriately qualified conservation heritage architect.	Heritage Consultant
Systems Connect will take all reasonable steps so as not to harm, modify or otherwise impact any Aboriginal heritage object associated with the LW scope of works.	Environment and Sustainability Manager
Excavation and Earthworks	

Mitigation Measures	Accountability
In the event that a potential burial site or potential human skeletal material is exposed during construction, the Project unexpected finds protocol and the Transport for NSW Exhumation Management Plan will be implemented.	Environment and Sustainability Manager
In the event that unexpected archaeological remains, relics, or potential heritage items are discovered during construction, all works in the immediate area will cease, and the unexpected finds protocol will be implemented.	Site Supervisors Environment and Sustainability Manager Heritage Consultant

6.2 Heritage Unexpected Finds Protocol

An *Aboriginal and Historic Heritage Unexpected Finds Protocol C2B* has been developed in accordance with Condition E19 (CSSI 7400) and Condition E15 (CSSI 8256) by AMBS to manage the risk of impact to previously unidentified heritage items at the LW sites (Appendix C1) for the duration of construction. The protocol has been informed by the AARDs and the ACHAs prepared for each section of the project and outlines:

- Implementation of the relevant AARD and ACHA
- Training via inductions and toolbox talks
- Management of potential heritage finds (including suspected human remains)
- Consultation
- Assessment of the findings
- Reporting.

From time to time, old items may be found, which are not considered to be potential heritage finds. Such items will be notified to the Supervisor, who will advise the Environment and Sustainability Manager or the Environmental Coordinator. The Environmental Coordinator will use *Assessing Significance for Historical Archaeological Sites and Relics (Heritage Branch NSW Department of Planning, 2009)* to make a determination on whether the item may meet the definitions of “Environmental Heritage” or “Relic” in this document. Advice from the Heritage Consultant may also be sought, if there is any uncertainty. Depending on the nature of the item found, works may be stopped or allowed to continue whilst the determination is made, at the discretion of the Environment and Sustainability Manager. Furthermore, the Sydney Metro Environment delegate and the Environmental Representative will be informed following any unexpected heritage find on the project, as per the Sydney Metro Unexpected Finds Protocol

If there are any unexpected heritage finds revealed (including Aboriginal objects or human remains) during LW scope of works, works must stop immediately in the affected area. A ‘no-go zone’ must be established around the item. The relevant nominated Excavation Director (historic or Aboriginal) will be contacted. The Excavation Director will complete a preliminary assessment and recording of the item and will then make a determination on the significance of the find and its appropriate management: detailed recording, further historical research/investigation and/or archaeological excavations (with artefact analysis and identification of a final repository for finds). If this were to eventuate, following completion of works, a Heritage Report will be completed. This would include any applicable details relating to the heritage find and further investigations, in accordance with any guidelines and standards required by the Heritage Council of NSW and DPE. The regulators (Heritage NSW and the secretary) must be notified if required. Advice from the excavation director should be implemented and clearance certificates sought prior to resuming work, advice from the Excavation Director should also be provided in writing.

Advice for the short and/or long-term management of any found artefacts or movable heritage would be sought from the relevant Excavation Director, Sydney Metro and DPE.

If the find is identified as a relic having state significance, the Excavation Director (historic heritage) will prepare an Archaeological Relics Management Plan (ARMP)/Excavation Director’s Report (EDR) in consultation with DPE and the Heritage Council or its delegate and in accordance with Condition E20 (CSSI 7400) and Condition E11 (CSSI 8256). Measures to be implemented to avoid and/or minimise harm, where this is feasible, would be developed.

Construction in the vicinity of the discovery would not recommence until the requirements of the ARMP have been implemented, and receipt of written confirmation from the Excavation Director.

Where previously unidentified Aboriginal objects are discovered during construction during LW Works, construction will stop in the vicinity of the affected area and the Excavation Director (Aboriginal heritage) will be contacted to provide specialist heritage advice, before works recommence. Excavation and/or salvage would be undertaken by the Excavation Director in consultation with the Registered Aboriginal Parties for the CSSI. The measures to consider and manage this process are described in the Aboriginal and Historic Heritage Unexpected Finds Protocol C2B (Appendix C1). Where relevant, Aboriginal objects will be registered in DPE's Aboriginal Heritage Information Management System (AHIMS).

In the unlikely event that human remains are encountered work will immediately cease and the police, DPE, Heritage Council and AMBS will be contacted for advice and guidance. The Exhumation Management Plan will be implemented. Reference will also be made to Guidelines for Management of Human Skeletal Remains (NSW Heritage Office, 1998b) and NSW Health Policy Directive – Exhumation of Human Remains (December 2013), and other relevant guidelines and standards prepared by the Heritage Council of NSW or OEH.

6.3 Heritage Protection

Based on assessments carried out to date, LW Works and construction methodologies, Systems Connect will not need to remove or impact heritage items, or heritage items in the vicinity/curtilage of the works. A detailed inventory of all buildings, structures, fabric, spaces and vistas of heritage significance that are to be retained is not considered to be necessary for Systems Connect scope of works.

Management measures to be implemented to prevent and minimise impacts on heritage items and/or measures to protect unaffected sites during construction works in the vicinity will include but not be limited to identification of unexpected heritage items on Site Environmental Plans, installing physical delineation/flagging, screens/hoardings and toolboxing workers.

In addition, the advice of the Heritage Specialist Consultant will be sought regarding methods and locations for installing equipment used for vibration, movement and noise monitoring of heritage-listed structures, in accordance with Condition E31 (CSSI 7400).

6.4 Archival Recording

Due to project staging, archival recording and reporting of known heritage items on the Project will be, or will have been, undertaken by other contractors. Any archival recordings that are required to be undertaken in compliance with Condition E10 (CSSI 8256) would be triggered by a Modification or Consistency Assessment and will be prepared in accordance with guidelines and standards required by the Heritage Council of NSW and DPE, including the NSW Heritage Office's How to Prepare Archival Records of Heritage Items (1998), and Photographic Recording of Heritage Items Using Film or Digital Capture (2006).

6.5 Archeological Excavation

The Archaeological Assessment Research Design Report (AARD) identifies archaeological management zones based on archaeological potential and construction impacts at the station and construction sites. Bulk excavation, demolition and preliminary construction activities will already have been undertaken by others by the time Systems Connect commence works in the station sites and tunnels. Archaeological Method Statements were prepared for the Tunneling and Stations Excavation Contractor for the Chatswood to Sydenham section of the project and all archaeological investigations and excavations (historic and Aboriginal) have been completed. The Early Works Contractor for the Sydenham to Bankstown project has developed Archaeological Method Statements including management and mitigation measures for various station sites. As such the relevant AARD and AMS will be implemented in the event that an Unexpected Heritage Find is exposed during work. If the LW works footprint deviates from the areas previously assessed in the AARD, Systems Connect will need to undertake an archaeological desktop study to determine if further research is warranted and/or additional archaeological requirements are applicable. If this is required, Archaeological Method Statements would be prepared by the relevant nominated project Excavation Director (historic or Aboriginal), in consultation with the Heritage Council of NSW (or its delegate) and DPE before commencement of archaeological excavation works, with methodology as described in the Conditions of Approval (CSSI 7400).

The archaeological research design, including any mitigation measures identified in the Archaeological Assessment and Research Design report, would be implemented.

6.6 Final Heritage Report

The archaeological requirements of the project are triggered by the Unexpected Heritage Finds Protocol and as such, preparation of a Final Heritage, or Excavation Report should not be required, with exception to the Blues Point Streetscaping scope of works for which an Archaeological Monitoring Report was prepared at the completion of works. In accordance with heritage best practice and contractual obligations, each Unexpected Heritage Find will be the subject of a brief report in Memo format that outlines the archaeological management of the find, additional information gained by analysis and research into the find and its heritage significance. Each Memo will be provided to the relevant Interface Contractor and submitted to the Planning Secretary, the Heritage Council of NSW and OEH for information no later than 6 months after the completion of the Work associated with the Unexpected Heritage Find.

PART B – IMPLEMENTATION

7. Elements and Expectations

Part B of this Sub-Plan explains how potential heritage impacts during the LW Works will be minimised and managed. Compliance with all elements is required at all times to minimise the likelihood of causing unauthorised environmental harm and maximise the uptake of opportunities to reduce environmental impact.

Part B contains the following:

- **Environmental Elements and Expectations:** These describe what is required of Systems Connect to Implement the Objectives of the Environment and Sustainability Policy Statement:
 - **Element** – Key aspects for managing this function in delivering the LW Works
 - **Expectation** – The outcomes achieved as part of each element.
- **Requirements:** These are the specific actions required to demonstrate compliance with the Elements and Expectations.
- **Responsibility and Key Contributor:** Designation of responsibility or achieving compliance with the stated Expectation. Key contributors assist / contribute to achieving compliance.

Deliverables: Tangible outcomes produced to demonstrate compliance with the environmental Elements and Expectations.

Element 1: Training

Expectations	How we will meet the Expectations (minimum requirements)	Responsibility Key Contributor	Deliverables
1.1 All personnel have completed an induction containing relevant environmental information before they are authorized to work on the Project	<p>Induction presentation will include general information on the following:</p> <ul style="list-style-type: none"> Information on potential heritage of the site Requirements for management of potential unexpected heritage finds Hold points (stop works in the event of a potential unexpected heritage find) 	<p>Human Resources Manager</p> <p>Environment and Sustainability Manager Environmental Advisor Environmental Coordinators</p>	<p>Induction Presentation Induction Records</p>
1.2 Additional toolbox talks are used to reinforce key management requirements and lessons learnt	<p>Toolbox talks will be held regularly during site establishment and throughout construction. They will reinforce and reiterate information from inductions.</p> <p>Toolboxing will be undertaken on the Aboriginal and Historic Heritage Unexpected Finds Protocol C2B (SMCSWLWC-SYC-1NL-EM-PRO-002656).</p>	<p>Environment and Sustainability Manager</p> <p>Site Supervisors Environmental Advisor Environmental Coordinators</p>	<p>Toolbox Records</p>

Element 2: Monitoring, Compliance, Records and Reporting

Expectations	How we will meet the Expectations (minimum requirements)	Responsibility Key Contributor	Deliverables
2.1 Worksites are regularly inspected to ensure the adequacy of controls and compliance with the requirements of this Sub-Plan	<p>Systems Connect will regularly review the LW sites to ensure compliance with legal and contract requirements and to identify potential non-compliances before they occur, as below:</p> <ul style="list-style-type: none"> • Site inspection checklist will include reference to heritage protection measures • Details of daily inspections undertaken by the Site Supervisor will be logged in their respective site diaries. • Routine weekly inspections are to be conducted which will include heritage checks where applicable. Weekly inspections will be documented in System Connect's electronic system. <p>The ER will monitor the implementation of this Sub-Plan and related documents to ensure compliance with what is stated in the documents and the terms of the planning approvals. The ER will achieve this through:</p> <ul style="list-style-type: none"> • Regular inspections of active worksites • Review of Systems Connect records. 	<p>Environment and Sustainability Manager</p> <p>Site Supervisors Environmental Advisor Environmental Coordinators Environmental Representative</p>	<p>Environmental Inspection Reports Site Diary Entries ER Reports</p>

Element 3: Auditing, Review and Improvement

Expectations	How we will meet the Expectations (minimum requirements)	Responsibility Key Contributor	Deliverables
3.1 Audits are undertaken to ensure compliance with the requirements of this Sub-Plan	<p>Procedures for corrective actions are addressed in the Construction Environmental Management Plan C2B (SMCSWLWC-SYC-1NL-PM-PLN-000033).</p> <p>Audits will be performed in accordance with the CEMP C2B and this Sub-Plan and/or associated documents or procedures will be updated if required.</p>	<p>Environment and Sustainability Manager</p> <p>Environmental Advisor</p> <p>Environmental Coordinators</p> <p>Sustainability Manager</p>	<p>Audit Reports</p> <p>Corrective Action Reports</p>
3.2 All non-compliances are reported and actioned	<p>A heritage non-compliance can generally be defined as a failure to comply with:</p> <ul style="list-style-type: none"> • Relevant environmental legislation • Project Planning Approvals • Environmental Protection Licence • Deed • Heritage Management Sub-Plan and related documents <p>Corrective and Preventative Actions may also be raised in accordance with the Construction Environmental Management Plan C2B (SMCSWLWC-SYC-1NL-PM-PLN-000033).</p> <p>All non-compliances are to be reported as per the Sydney Metro Environment Incident and Non-compliance Reporting Procedure.</p>	<p>Environment and Sustainability Manager</p> <p>Sustainability Manager</p> <p>Environmental Advisor</p> <p>Environmental Coordinators</p>	<p>Audit Reports</p> <p>Corrective Action Reports</p>

Element 4: Project Specific Requirements

Construction Environmental Management Framework – Sydney Metro City & Southwest (2017)

Construction Environmental Management Framework				
No.	Requirement	How we will meet the Expectations (minimum requirements)	Responsibility Key Contributor	Timing
10.1a	The following heritage management objectives will apply to construction:	Implementation of this Sub-Plan: Refer to Section 1.3	Environment and Sustainability Manager Environmental Advisor Environmental Coordinators Area Managers	Prior to and for the duration of construction
	(i) Embed significant heritage values through any architectural design, education or physical interpretation;			
	(ii) Minimise impacts on items or places of heritage value;			
	(iii) Avoid accidental impacts on heritage items; and			
	(iv) Maximise worker's awareness of Indigenous and non-Indigenous heritage.			
10.2b	The Contractor's regular inspections will include checking of heritage mitigation measures	Refer to Element 2:	Environment and Sustainability Manager Environmental Advisor Environmental Coordinators	During Construction
10.2c	Compliance records will be retained by the Contractor. These will include:		Environment and Sustainability Manager Environmental Advisor Environmental Coordinators	Prior to and for the duration of construction
(i)	Inspections undertaken in relation to heritage management measures;	Refer to Element 2:		
(ii)	Archival recordings undertaken of any heritage item;	Refer to Section 6.4		
(iii)	Unexpected finds and stop work orders; and	Refer to Section 6.2 and Appendix C1		
(iv)	Records of any impacts avoided or minimized through design or construction methods.	Design Reports and Element 2:		
10.3a	Examples of heritage mitigation measures include:			

Construction Environmental Management Framework				
No.	Requirement	How we will meet the Expectations (minimum requirements)	Responsibility Key Contributor	Timing
(i)	Any heritage item not affected by the works will be retained and protected throughout construction;	Refer to Section 6.1, 6.2, 6.4, Element 4: and Appendix C1	Environment and Sustainability Manager Environmental Advisor Environmental Coordinators Area Managers	Prior to and for the duration of construction
(ii)	During construction undertake professional archaeological investigation, excavation, and reporting of any historical Indigenous heritage sites of state significance which will be affected. Reporting may be completed as construction progresses;			
(iii)	Undertake archival recordings of all non-Indigenous heritage items affected by the works prior to commencement of works; and			
(iv)	Implement unexpected heritage find procedures for Indigenous and non-Indigenous heritage items.			

Planning Approval SSI 7400 – Chatswood to Sydenham

Planning Approval SSI-7400 (CoA)				
No.	Requirement	How we will meet the Expectations (minimum requirements)	Responsibility Key Contributor	Timing
E10	The Proponent must not destroy, modify or otherwise physically affect any Heritage item not identified in documents referred to in Condition A1.	Section 6.3	Environment and Sustainability Manager Environmental Coordinator	Prior to and for the duration of construction
E17	The Archaeological Assessment Research Design Report (AARD) in the documents listed in A1 must be implemented. Final Archaeological Method Statements must be prepared in consultation with the Heritage Council of NSW (or its delegate) before commencement of archaeological excavation works. The final methodology must:	Section 6.5 Noted – applicable when triggered by delivery of LW (unexpected finds) – refer to Section 6.2 Unexpected finds	Environment and Sustainability Manager	If and when required
a)	provide for the detailed analysis of any heritage items discovered during the investigations;			
b)	include detailed site specific archaeological management and artefact management strategies;			

Planning Approval SSI-7400 (CoA)				
No.	Requirement	How we will meet the Expectations (minimum requirements)	Responsibility Key Contributor	Timing
c)	include cored soil samples for soil and pollen for the Pitt Street site within the Tank Stream Valley; and			
d)	provide for a sieving strategy.			
E18	<p>Before excavation of archaeological management sites, the Proponent must nominate a suitably qualified Excavation Director who complies with the Heritage Council of NSW's Criteria for Assessment of Excavation Directors (July 2011) to oversee and advise on matters associated with historic archaeology and advise the Department and OEH.</p> <p>Where archaeological excavation is required, the Excavation Director must be present to oversee excavation and advise on archaeological issues. The Excavation Director must be given the authority to advise on the duration and extent of oversight required as informed by the provisions of the approved AARD and Excavation Methodology.</p> <p>A final archaeological report must be submitted to the Heritage Council of NSW within two (2) years of the completion of archaeological excavation on the project. The report must include information on the entire historical archaeological program relating to the CSSI.</p>	<p>Section 6.5</p> <p>Noted – Not activated by delivery of LW – refer to Section 6.2 Unexpected finds</p>	Environment and Sustainability Manager	If and when required
E19	An Unexpected Heritage Finds Procedure must be prepared:	Refer to Section 6.2 and Appendix C1	Environment and Sustainability Manager Environmental Advisor Environmental Coordinators	Prior to and for the duration of construction
a)	to manage unexpected heritage finds in accordance with any guidelines and standards prepared by the Heritage Council of NSW or OEH; and			
b)	by a suitably qualified and experienced heritage specialist.			
	The procedure must be included in the AARD and must be implemented for the life of the project.			
E20	In the event that a potential relic(s) is/are discovered, relevant construction must cease in the affected area and the Excavation Director must be notified and assess the significance level of the	Section 6.2	Environment and Sustainability Manager	If and when required

Planning Approval SSI-7400 (CoA)

No.	Requirement	How we will meet the Expectations (minimum requirements)	Responsibility Key Contributor	Timing
	<p>find/s and provide mitigation advice according to the significance level and the impact proposed. The Excavation Director must attend the site in accordance with E18 to oversee the excavation where relics of State significance are found.</p> <p>The Secretary must be notified at the same time as the Heritage Council of NSW (or its delegate) of any relic of State significance found.</p> <p>An Archaeological Relic Management Plan specific to the relic of State significance must be prepared in consultation with the Heritage Council of NSW (or its delegate) to outline measures to be implemented to avoid and/or minimise harm to and/or salvage the relic of State significance.</p> <p>Construction in the vicinity of the discovery must not recommence until the requirements of the ARMP have been implemented, in consultation with the Excavation Director. The Proponent must notify the Secretary in writing of the outcome of consultation on the Archaeological Relic Management Plan with the Heritage Council of NSW.</p>			
E21	<p>The Proponent must prepare a Heritage Interpretation Plan which identifies and interprets the key Aboriginal and Non-Aboriginal heritage values and stories of heritage items and heritage conservation areas impacted by the CSSI. The Heritage Interpretation Plan must inform the Station Design and Precinct Plan referred to in Condition E101. The Heritage Interpretation Plan must be prepared in accordance with the NSW Heritage Manual, the NSW Heritage Office's Interpreting Heritage Places and Items: Guidelines (August 2005), and the NSW Heritage Council's Heritage Interpretation Policy and include, but not be limited to:</p>	<p>Developed as part of Area Specific Design Reports for Artarmon, Chatswood and the Southern Dive</p>	Environment and Sustainability Manager	Prior to and for the duration of construction
a)	<p>a discussion of key interpretive themes, stories and messages proposed to interpret the history and significance of the affected heritage items and sections of heritage conservation areas including, but not limited to the Sydney Terminal and Central Railway Stations Group, Martin Place Station, Sydenham Station and Sydenham Pit and Drainage Pumping Station Precincts;</p>	<p>Consultation requirements for HIP addressed in the relevant design package and the Community Communications Strategy for the project.</p>	Design Manager	During Design
b)	<p>identification and confirmation of interpretive initiatives implemented to mitigate impacts to archaeological Relics, heritage items and conservation areas affected by the CSSI including;</p>	<p>Consultation requirements for HIP addressed in the relevant design package and the Community Communications Strategy for the project.</p>	Design Manager	During Design

Planning Approval SSI-7400 (CoA)				
No.	Requirement	How we will meet the Expectations (minimum requirements)	Responsibility Key Contributor	Timing
	<ul style="list-style-type: none"> (i) use of interpretative hoardings during construction (ii) community open days (iii) community updates (iv) station and precinct design; and 			
c)	Aboriginal cultural and heritage values of the project area including the results of any archaeological investigations undertaken.	Via Development of HIP in Design	Design Manager	During Design
	The Heritage Interpretation Plan must be prepared in consultation with the Heritage Council of NSW (or its delegate), Relevant Councils and Registered Aboriginal Parties, and must be submitted to the Secretary before commencement of construction.	Consultation requirements for HIP addressed in the relevant design package and the Community Communications Strategy for the project.	Design Manager	During Design
E23	The Proponent must take all reasonable steps so as not to harm, modify or otherwise impact any Aboriginal object associated with the CSSI except as authorised by this approval.	Section 6		
E24	Before excavation, the Proponent must implement the Aboriginal Cultural Heritage Assessment prepared for the CSSI and included in the PIR. Excavation and/or salvage must be undertaken by a qualified archaeologist in consultation with the Registered Aboriginal Parties for the CSSI.	Section 6.2	Environment and Sustainability Manager	If and when required
E25	Where previously unidentified Aboriginal objects are discovered during construction of the CSSI, construction must stop in the vicinity of the affected area and a suitably qualified and experienced Aboriginal heritage expert must be contacted to provide specialist heritage advice, before works recommence. The measures to consider and manage this process must be specified in the Heritage Management sub-plan required by Condition C3 and, where relevant, include registration in the OEH's Aboriginal Heritage Information Management System (AHIMS).	Section 6.2 and Appendix C1	Environment and Sustainability Manager	If and when required
E27	An Exhumation Management Plan must be prepared to guide the relocation of recovered human remains. The Exhumation Management Plan must be prepared:	Section 6.2 and Appendix C1	Preparation of EMP has been done by Sydney Metro, implementation will be the responsibility of the Environment and Sustainability Manager	If and when required

Planning Approval SSI-7400 (CoA)				
No.	Requirement	How we will meet the Expectations (minimum requirements)	Responsibility Key Contributor	Timing
a)	in consultation with, and meeting the requirements of, the OEH and NSW Health; and			
b)	in accordance with the Guidelines for Management of Human Skeletal Remains (NSW Heritage Office, 1998b) and NSW Health Policy Directive – Exhumation of human remains (December, 2013), and other relevant guidelines and standards prepared by the Heritage Council of NSW or OEH.			
	The Exhumation Management Plan must be provided to the Secretary for information before the commencement of excavation works. Note: Human remains that are found unexpectedly during works are under the jurisdiction of the NSW State Coroner and must be reported to the NSW Police immediately.			

Planning Approval SSI-7400 (REMMs)				
No.	Requirement	How we will meet the Expectations (minimum requirements)	Responsibility Key Contributor	Timing
AH1	Aboriginal stakeholder consultation would be carried out in accordance with the NSW Office of Environment and Heritage's Aboriginal Cultural Heritage Consultation Requirements for Proponents 2010.	Refer to Section 6.1	Stakeholder and Community Relations Manager	If and when required
AH2	The cultural heritage assessment report would be implemented.	No currently activated under LW		
AH4	Appropriate Aboriginal heritage interpretation would be incorporated into the design for the project in consultation with Aboriginal stakeholders.	Design requirement	Design Manager Stakeholder and Community Relations Manager	During design

Planning Approval SSI-7400 (REMMs)				
No.	Requirement	How we will meet the Expectations (minimum requirements)	Responsibility Key Contributor	Timing
NAH11	<p>Except for heritage significant elements affected by the project, direct impacts on other heritage significant elements forming part of the following items would be avoided</p> <ul style="list-style-type: none"> The Blues point Waterfront Group (including the former tram turning circle, stone retaining wall bollards and steps) 	Refer to Section 6.1, 6.2 and 6.3	Environment and Sustainability Manager, Site Manager	Design and Construction

Planning Approval SSI 8256 – Sydenham to Bankstown

Planning Approval SSI-8256 (CoA)				
No.	Requirement	How we will meet the Expectations (minimum requirements)	Responsibility Key Contributor	Timing
E10	Following completion of Work described in the documents listed in Conditions A1 and A2 in relation to heritage items, a Heritage Report including the details of any archival recording, further historical research either undertaken or to be carried out and archaeological excavations (with artefact analysis and identification of a final repository for finds), must be prepared in accordance with any guidelines and standards required by the Heritage Council of NSW and OEH.	Refer to Section 6.2	Environmental Manager	If required, following completion of construction
E11	E11 An Excavation Director's Report (EDR) must be prepared for any heritage items of State significance that are discovered during Work. The EDR must be prepared in consultation with OEH.	Refer to Section 6.2	Environmental Manager	If and when required
E15	An Unexpected Heritage Finds and Human Remains Procedure must be prepared to manage unexpected heritage finds in accordance with the guidelines and	Section 6.2 and Appendix C1	Environment and Sustainability Manager	Prior to construction

Planning Approval SSI-8256 (CoA)				
No.	Requirement	How we will meet the Expectations (minimum requirements)	Responsibility Key Contributor	Timing
	standards prepared by the Heritage Council of NSW or OEH.		Environmental Advisor Environmental Coordinators	
E16	The Unexpected Heritage Finds and Human Remains Procedure must be prepared by a suitably qualified and experienced heritage specialist in consultation with the Heritage Council of NSW and submitted to the Planning Secretary for information no later than one (1) month before the commencement of Construction.	Section 3.2, 6.2 and Appendix C1	Environment and Sustainability Manager Environmental Advisor Environmental Coordinators	One (1) Month Prior to Construction
E17	The Unexpected Heritage Finds and Human Remains Procedure, as submitted to the Planning Secretary, must be implemented for the duration of Construction and during Operational Maintenance Work. Note: Human remains that are found unexpectedly during Work are under the jurisdiction of the NSW State Coroner and must be reported to the NSW Police immediately.	Section 6.2 and Appendix C1	Environment and Sustainability Manager Environmental Advisor Environmental Coordinators	For the duration of construction

Planning Approval SSI-8256 (REMMs)				
No.	Requirement	How we will meet the Expectations (minimum requirements)	Responsibility Key Contributor	Timing
NAH1	The project design would minimise adverse impacts to heritage buildings, elements, fabric, spaces and vistas	Design requirement	Design Manager	During design

Planning Approval SSI-8256 (REMMs)				
No.	Requirement	How we will meet the Expectations (minimum requirements)	Responsibility Key Contributor	Timing
	that contribute to the overall heritage significance of the Bankstown Line.			
NAH2	The project design would maximise the retention and legibility of heritage buildings, structures, fabric, spaces and vistas that are individually significant and contribute to the overall heritage significance of the Bankstown Line.	Design requirement	Design Manager	During design
NAH3	The project design would complement retained heritage buildings, elements, fabric, spaces and vistas to avoid outcomes that compromise the significance of these heritage items.	Design requirement	Design Manager	During design
NAH12	The archaeological research design, including any mitigation measures identified in the Archaeological Assessment and Research Design report, would be implemented.	Section 6.5	Other Contractors	During design and construction, not currently triggered for Systems Connect SoW.
NAH13	Photographic archival recording would be carried out in accordance with the NSW Heritage Office's How to Prepare Archival Records of Heritage Items (1998), and Photographic Recording of Heritage Items Using Film or Digital Capture (2006).	Section 6.4	Other Contractors	If triggered by a Modification or Consistency Assessment the LW Contractor will address NAH13
NAH14	An unexpected finds procedure would be developed and included in the construction heritage management plan.	Section 6.2 and Appendix C1	Environment and Sustainability Manager Environmental Advisor Environmental Coordinators	For the duration of construction
NAH15	Methodologies for the removal of existing structures and construction of new structures would be developed and implemented during construction to	Section 6.3	Environment and	As required, throughout construction

Planning Approval SSI-8256 (REMMs)

No.	Requirement	How we will meet the Expectations (minimum requirements)	Responsibility Key Contributor	Timing
NAH16	minimise direct and indirect impacts to other elements within the curtilages of the heritage items, or to heritage items located in the vicinity of works.		Sustainability Manager Environmental Advisor Environmental Coordinators	
	All retained heritage buildings, structures, fabric and moveable heritage items would be protected to avoid damage during works in the vicinity of these items, including from vibration. Retained significant buildings or elements susceptible to damage would be protected by hoardings or screens.	Section 6.3	Environment and Sustainability Manager Environmental Advisor Environmental Coordinators	As required, throughout construction
NAH17	Prior to construction commencing, a detailed inventory of all buildings, structures, fabric, spaces and vistas of heritage significance that are to be retained or removed would be prepared by appropriately qualified and experienced heritage specialists. The inventory must provide an assessment of the heritage impact based on the significance of each element and sub-element that comprises it and include recommendations for protection and conservation relative to the identified level of heritage significance.	Section 6.3	Other Contractors	During design and construction, not currently triggered for Systems Connect SoW.
NAH18	In the event that unexpected archaeological remains, relics, or potential heritage items are discovered during construction, all works in the immediate area would cease, and the unexpected finds procedure would be implemented.	Section 6.2 and Appendix C1	Environment and Sustainability Manager Environmental Advisor Environmental Coordinators	For the duration of construction

Planning Approval SSI-8256 (REMMs)				
No.	Requirement	How we will meet the Expectations (minimum requirements)	Responsibility Key Contributor	Timing
NAH19	In the event that a potential burial site or potential human skeletal material is exposed during construction, the Transport for NSW Exhumation Management Plan would be implemented.	Section 6.1 and Appendix C1	Environment and Sustainability Manager	If and when required
NAH20	All works to conserve, protect or remove significant heritage fabric would be undertaken by skilled tradespeople with experience working on heritage sites, in consultation with an appropriately qualified conservation heritage architect.	Section 6.3	Other Contractors	During design and construction, not currently triggered for Systems Connect SoW.
AH5	If potential Aboriginal items are uncovered during the works, all works in the immediate area would cease, and the unexpected finds procedure included in the construction heritage management plan would be implemented. During pre-work briefings, employees would be made aware of the unexpected finds procedures and obligations under the National Parks and Wildlife Act 1974.	Section 6.2 and Appendix C1	Environment and Sustainability Manager Environmental Advisor Environmental Coordinators	For the duration of construction

ABORIGINAL AND HISTORIC HERITAGE UNEXPECTED FINDS PROTOCOL

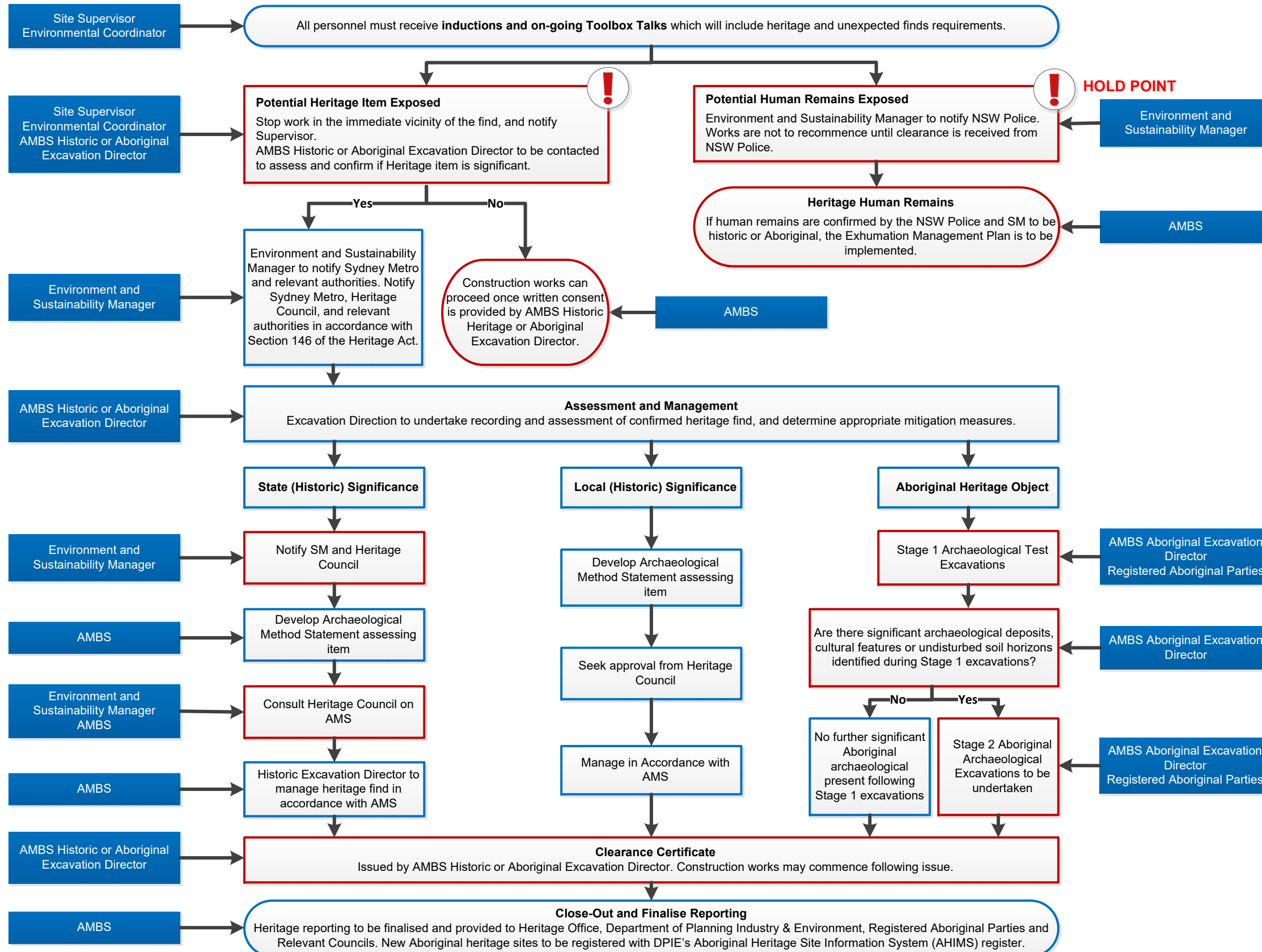
CHATSWOOD TO BANKSTOWN



RESPONSIBILITY

ABORIGINAL AND HISTORIC HERITAGE UNEXPECTED FINDS PROTOCOL

NOTES



Protected or 'No-Go' Areas

- If works in these areas are required, obtain a Permit to Enter Protected or 'No-Go' Areas

Monitoring

- Workers inspect work areas prior to start of work each day

Recording

- All records relating to heritage and unexpected finds will be retained.
- Consultant reports on confirmed heritage or human remains
- Location of unexpected finds on SEP/ site register
- Records of tool box talks and inductions

Note: Additional information on management of heritage and unexpected finds is included in part D of the CEMP C2B (SMCSWLWC-SYC-1NL-PM-PLN-000033), and the Heritage Management Sub-Plan (SCLWW-SYC-1NL-PM-PLN-000375). Sydney Metro Unexpected Heritage Finds Procedure (SMCSWLWC-SMD-1NL-HE-PRO-000363) should also be implemented and followed.

Appendix C2: Agency Consultation

Document Title: Heritage Management Sub-Plan - C2B Rev 0

Stakeholder	Raised By/Contact	Date	Comment No.	Document reference	Topic	Stakeholder consultation / comment	Project team response	Amendment made, Y/N?	Section	Closed Out
Heritage NSW (delegated by Heritage Council)	Alex Timms	16/12/2019	N/A	N/A	N/A	I have reviewed the Line-Wide Works Heritage Management Sub-Plan. Heritage NSW have no comments.	Noted	N	N/A	N/A
Aboriginal Cultural Heritage (DPE)	Dana Alderson Marnie Stewart	28/11/2019	N/A	N/A	N/A	21/10/2019 - Initial call to Dana Alderson to inform her about our upcoming Stakeholder Consultation workshop. No response. A message was left, along with a follow up email. 21/10/2019 - DA responded stating that due to other priorities, representatives from Greater Sydney would not be able to attend a briefing. DA advised the Project to send any reports or plans for EES/s review to Planning and Assessment at DPE who will consult with us as required. 25/11/2019 - Initial submission of HMP to Greater Sydney Aboriginal Cultural Heritage. 28/11/2019 - Marnie Stewart addressed Heritage Team with SC cc'd and advised them that this referral seeks consultation with the Heritage Council (or delegate). This email has been referred to the Heritage Branch. 11/12/2019 - Follow up call from AT to DA about progress. No response. 12/12/2019 - DA advised that this matter related to consultation with the Heritage Council on historic heritage and that she has forwarded it onto Heritage NSW. See Heritage Council / NSW comments for further consultation on this.	Noted	N	N/A	N/A
North Sydney Council	Gavin McConnell	4/12/2019	N/A	N/A	N/A	25/11/2019 - Initial submission of HMP to North Sydney Council. 4/12/2019 - GM sent an email advising MB that North Sydney Council notes the HMP and raises no further matters for consideration in this regard.	Noted	N	N/A	N/A

Document Title: Heritage Management Sub-Plan - C2B Rev 0

Stakeholder	Raised By/Contact	Date	Comment No.	Document reference	Topic	Stakeholder consultation / comment	Project team response	Amendment made, Y/N?	Section	Closed Out
Willoughby Council	Gordon Farrelly	N/A	N/A	N/A	N/A	<p>25/11/2019 - Initial submission of HMP to Willoughby Council.</p> <p>2/12/2019 - AT made follow up call to GF. No response, voicemail indicated that GF was on leave until tomorrow (3/12/2019). Left message.</p> <p>3/12/2019 - AT made another follow up call to GF. No response, message was left.</p> <p>9/12/2019 - MB called GF to discuss requirement of project to seek consultation on management sub-plans.</p> <p>10/12/2019 - MB emailed GF confirming discussion from yesterday, reminding GF that Systems Connect is targeting feedback from all sub-plans to be received by COB 17/12/2019.</p> <p>10/12/2019 - Gordon passed on to others in council that he considers best suited to review and provide feedback on the management plans. He advised these council members that comments are to be sent directly to MB.</p> <p>17/12/2019 - No response to date.</p> <p>12/02/2020 - MB has sent a follow up email to GF from Willoughby Council.</p>	No response received as at 12/02/2020	N/A	N/A	N/A
City of Sydney	Elise Webster	N/A	N/A	N/A	N/A	<p>25/11/2019 - Initial submission of HMP to City of Sydney Council.</p> <p>2/12/2019 - Elise expressed that if SC does not hear from CoS by due date, then assume that no comments have been made. No response received as of 17/12/2019.</p> <p>17/12/2019 - No response received to date.</p> <p>12/02/2020 - MB has sent a follow up email to EW from City of Sydney Council.</p>	No response received as at 12/02/2020	N/A	N/A	N/A

Document Title: Heritage Management Sub-Plan - C2B Rev 0

Stakeholder	Raised By/Contact	Date	Comment No.	Document reference	Topic	Stakeholder consultation / comment	Project team response	Amendment made, Y/N?	Section	Closed Out
Inner West Council	Manoj Isac	N/A	N/A	N/A	N/A	<p>15/11/2019 - MB initially emailed KW from Inner West Council stating that he has attempted to call Ken and introduced a list of documents (and their associated CoA condition) that were to be sent to councils for consultation.</p> <p>18/11/2019 - KW forwarded this email to Manoj Isac.</p> <p>26/11/2019 - MI asked where he can access the management plans sent out between 19/11/2019-25/11/2019. KT responded, providing dates that plans were provided to MI.</p> <p>26/11/2019 - KT called MI to explain review process, timing, comment response sheet, etc.</p> <p>28/11/2019 - MI requested that MB provide Inner West with a detailed scope of work with a location plan and project boundaries.</p> <p>29/11/2019 - MB sent MI current council presentation and proposed a workshop be held to provide information on project and plans.</p> <p>9/12/2019 - Presentation held for Inner West Council members, providing details of project scope and requirements for document consultation.</p> <p>17/12/2019 - No response received to date.</p> <p>12/02/2020 - KT has called and emailed NM (who attended workshop to represent heritage matters) seeking confirmation of no comments.</p>	No response received as at 12/02/2020	N/A	N/A	N/A
City of Canterbury Bankstown	Alvin Fung	N/A	N/A	N/A	N/A	<p>4/12/2019 - Initial email from Alvin on stating no comments on other plans. AF advised that he will come back to MB if he has any comments on the heritage plan. A response was sent from Mathew Billings to confirm we had received these comments. Alvin responded on 9/12/2019 that another team in the council was looking at the HMP and requested the response timeframes to be resent to him. Mathew Billings provided review dates on 9/12/2019. Alvin followed up on 10/12/2019 that CBC team members are currently at full capacity and would not get the plan back by 17/12/2019. Mathew Billings advised Alvin that the project targeted having responses back by 17/12/2019, and that if the Council could not provide feedback by this date, it would be reflected in the consultation record.</p>	No response received as at 12/02/2020	N/A	N/A	N/A

Document Title: Heritage Management Sub-Plan - C2B Rev 0

Stakeholder	Raised By/Contact	Date	Comment No.	Document reference	Topic	Stakeholder consultation / comment	Project team response	Amendment made, Y/N?	Section	Closed Out
Heritage NSW (delegated by Heritage Council) *	Siobhan Lavelle	20/12/2019	6	Section 6.1, Table 10 and Section 6.2	Controls	Controls to be implemented for the LW works are listed in Table 10 in Section 6.1 and an unexpected finds procedure in Section 6.2 (which also includes Human Remains and is also described in Appendix C1). These controls are considered adequate.	Noted.	N	N/A	N/A
Heritage NSW (delegated by Heritage Council) *	Siobhan Lavelle	20/12/2019	7	Page 25	Excavation Director's Report	Heritage NSW suggests one change, where p.25 notes that:	Noted. Reference added to plan.	Y	Section 6.2	Y
						<i>For any unexpected finds which are determined to be of State significance, an Excavation Director's Report (EDR) will be prepared in consultation with DPE.</i>				
						It is suggested that consultation should also occur with the Heritage Council or its Delegate.				
Heritage NSW (delegated by Heritage Council) *	Siobhan Lavelle	19/12/2019	5	Overall	Overall	Overall the HMP is considered sufficient to guide the future works and mitigate the historic heritage impacts of the Line Wide works project.	Noted.	N	N/A	N/A

* Note: This comment was submitted to Systems Connect following issue to DPE.

Tristan McCormick
Environmental Advisor
Line Wide Works Project
Systems Connect
Level 3, 116 Miller Street
NORTH Sydney NSW 2060.

03 October 2023

Ref: 170108(m) HMP C2B Rev 4 & 5

Dear Tristan

RE: Approval of Minor Amendments to Heritage Management Sub-Plan C2B Revisions 4 and 5

Thank you for providing, for Environmental Representative (ER) review and approval in accordance with MCoA A24(j) of SSI 15_7400 and MCoA A26 (i) of SSI 8256, the amended Heritage Management Sub-Plan C2B (HMP) titled *Heritage Management Sub-Plan C2B* document number *SMCSWLWC-SYC-1NL-PM-PLN-000375* Revisions 4 and 5 dated 02/06/2023 and 20/09/2023.

As an approved ER for the Sydney Metro City and Southwest Project, I have reviewed the following proposed minor amendments, as a consequence of the scheduled review of the plan and procedure. The following sections/tables of the HMP are being amended under this RfMA and summarised below:

- a) Minor updates to address SM/ER comments on scheduled review and typos (refer associated comments register)
- b) Update to Section 1.5.2 - Staging Reports
- c) Update to Section 1.5.3 – Interface
- d) Update to Section 2.3 – To amend DPIE to DPE
- e) Update to Section 4.1.2 - To include Blues Point Streetscaping reference
- f) Update to Section 6.2 and Appendix C1 –To reference/incorporate SM's latest UXF Protocol
- g) Update to Section 6.6 – To include reference to Blues Point AMR
- h) Update to Section 3.1 (Table 6) – Inclusion of “or delegate”
- i) Update to Table 7 – Chatswood, Millers Point and Blues Point
- j) Update to Element 3 – 3.2 – Requirement to report NCRs
- k) Update to Element 4 – SSI 7400 CoA E21 Responsibility

In my opinion, the proposed changes are minor amendments as defined in Section 1.5 of the Construction Environmental Management Plan – Chatswood to Bankstown.

On this basis, I approve the amended *Heritage Management Sub-Plan C2B* Revision 5 (dated 20 September 2023) for implementation.

Yours sincerely



Swathi Gowda
Environmental Representative – Sydney Metro, City and Southwest