

E57 Consultation Report

Luddenham South – Earthworks & Haulage

Western Sydney Airport – Surface and Civil Alignment Works (SCAW)

Project Name	Sydney Metro – Western Sydney Airport, Surface and Civil Alignment Works
Project Number	N81150
Revision	A

Distribution and Authorisation

Document Control

The CPBUI JV Environment Manager is responsible for ensuring this report is reviewed and approved. The Environment and/or Community Engagement Manager is responsible for updating this report, as required.

Revision Details

Rev.	Details
A	First draft

Table of contents

Part 1 Overview	4
1. Introduction	4
1.1. Project Background	4
1.2. Project description	4
1.2.1. SCAW scope of works	5
1.2.2. Out of Hours Scope of Works	5
Part 2 – Scope of this report	7
Part 3 – Summary of Requirements	8
3.1. Condition of Approval (SSI 10051)	8
3.2. Respite Eligibility	9
3.3. Mitigation Measures and Planned Respite	9
For the proposed out of hours works the following general mitigation measures and respite will be implemented:	9
Part 4 – Compliance Discussion	10
4.1. Consultation Overview	10
4.2. Notification – Monthly Update	10
4.3. Notification – Specific Notification	10
4.4. Notification Distribution Map	11
4.5. Consultation Records	12
Part 5 - Conclusion	13
Appendices	14
Appendix A – Monthly Notification	15
Appendix B – Specific Notification	16

Part 1 Overview

1. Introduction

1.1. Project Background

The SCAW Project will be undertaken on Darug Country and will form part of the future Western Parkland City. The Project involves the construction and operation of a new 23km metro rail line that extends from the existing Sydney Trains suburban T1 western line (at St Marys) in the north to the Aerotropolis (at Bringelly) in the south. The alignment includes a combination of tunnels and civil structures, including viaducts, bridges, and surface and open-cut troughs between the two tunnel sections. The Project also includes six new metro stations, and a stabling and maintenance facility and operational control centre at Orchard Hills. The SCAW package is the second major contract package to be procured for the Project. The successful and timely completion of the SCAW package is critical to the subsequent construction activities and ultimate completion of the entire Project.

The Sydney Metro Western Sydney Airport will become the transport spine for Greater Western Sydney, connecting communities and travellers with the new Western Sydney International (Nancy-Bird Walton) Airport (referred to as Western Sydney International) and the growing region.

1.2. Project description

The Project forms part of the broader Sydney Metro network. It involves the construction and operation of a 23km new metro rail line that extends from the existing Sydney Trains suburban T1 Western Line (at St Marys) in the North and the Aerotropolis (at Bringelly) in the South. The alignment includes a combination of tunnels and civil structures, including viaduct, bridges, surface and open-cut troughs between the two tunnel sections (Figure 1).

1.2.1. SCAW scope of works

The scope for the SCAW package includes approximately 10.6km of alignment up to the underside of track formation from Orchard Hills to the Western Sydney International (WSI) airport. This includes approximately:

- 3.6 kilometre of viaduct
 - 400 metres of viaduct over Blaxland Creek
 - 660 metres of viaduct over the Patons Lane area and un-named creek
 - 2.5km of viaduct in the Luddenham Road area including across the Warragamba pipeline, at Luddenham Station, across Luddenham Road and across Cosgrove Creek
- 205 metres of bridges
 - An over rail bridge, approximately 180m long, over the proposed M12 Motorway
 - An over rail bridge, approximately 25m long, over the drainage swale on the WSI airport site
- 6.9km of at-grade alignment
 - 600m at Orchard Hills, south of Lansdowne Road
 - 1.6km alongside the stabling maintenance facility in Orchard Hills
 - 900m to the north of the Warragamba pipelines
 - 1.1km north of the proposed M12 motorway
 - 1.4km south of the proposed M12 Motorway on Elizabeth Drive
 - 1.3km within the Airport site from the northern boundary to the Airport Business Park Station
- Temporary and permanent access roads.

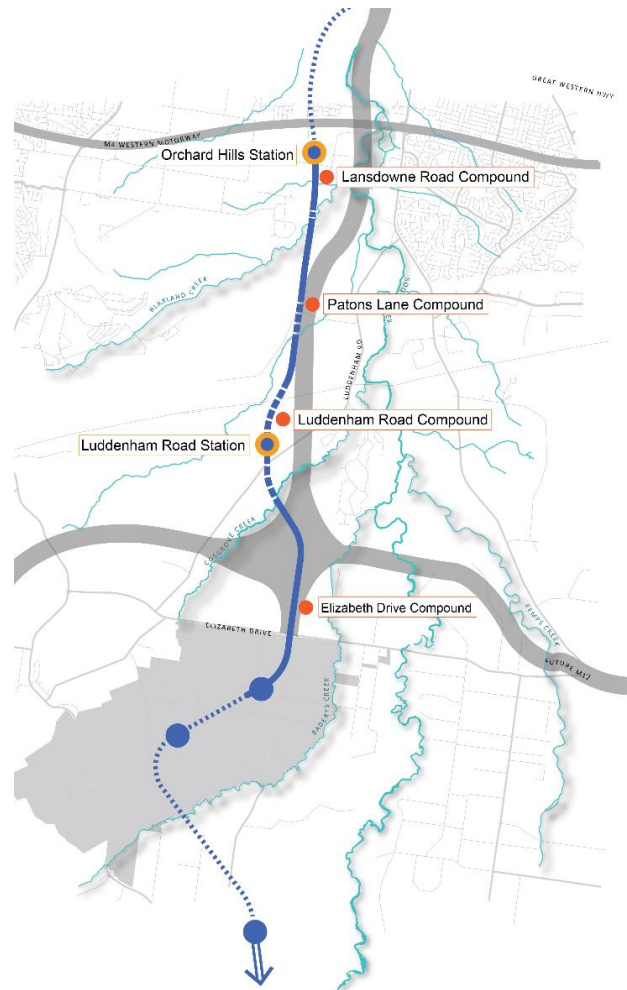


Figure 1 – Overview of the SCAW Project

1.2.2. Out of Hours Scope of Works

The scope of upcoming out of hour works includes:

- Haulage and stockpile of earthworks materials to Luddenham Road Gate 5 – South to Cosgroves Creek.

These are detailed in SCAW Detailed Noise and Vibration Impact Statement (DNVIS) 005 – Sandstone Delivery and Placement and the location is provided in Figure 2 below.

Works are scheduled to commence Wednesday 11th October 2023 until approximately 30th November 2023 - Monday 7am to Saturday 6pm.

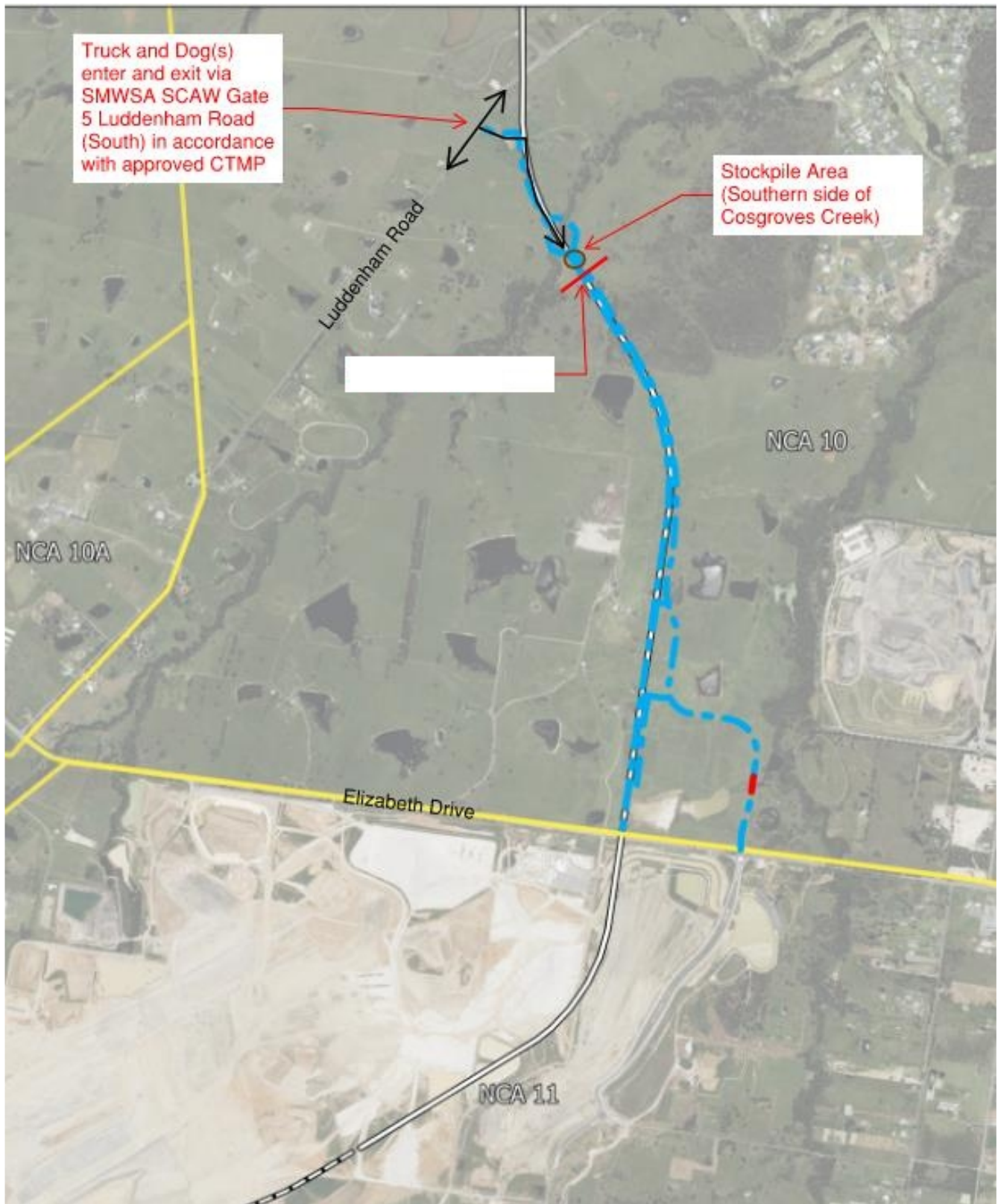


Figure 2 – Works Location

Part 2 – Scope of this report

This E57 Community Consultation Report provides a summary of consultation undertaken in accordance with Condition of Approval E57 with respect to out of hours works activities proposed at Luddenham Roundabout assessed in SCAW DNVIS 005.

Out-of-Hours Works – Community Consultation on Respite

E57 In order to undertake out-of-hours work outside the work hours specified under Condition E38, appropriate respite periods for the out-of-hours work must be identified in consultation with the community at each affected location on a regular basis. This consultation must include (but not be limited to) providing the community with:

- (a) a progressive schedule for periods no less than three (3) months, of likely out-of-hours work;
- (b) a description of the potential work, location and duration of the out-of-hours work;
- (c) the noise characteristics and likely noise levels of the work; and
- (d) likely mitigation and management measures which aim to achieve the relevant NMLs under Condition E43 (including the circumstances of when respite or relocation offers will be available and details about how the affected community can access these offers).

The outcomes of the community consultation, the identified respite periods and the scheduling of the likely out-of-hour work must be provided to the ER, EPA and the Planning Secretary prior to the out-of-hours work commencing.

Note: Respite periods can be any combination of days or hours where out-of-hours work would not be more than 5 dB(A) above the RBL at any residence.

Part 3 – Summary of Requirements

3.1. Condition of Approval (SSI 10051)

The requirements of Condition of Approval E57 and where they have been addressed in this report is detailed in Table 3.1 below.

Table 3.1 – Summary of requirements

Condition	Requirement	Report Reference
CoA E57	Appropriate respite periods for the out-of-hours work must be identified in consultation with the community at each affected location on a regular basis. This consultation must include (but not be limited to) providing the community with:	Section 4.2 Appendix A
	(a) a progressive schedule for periods no less than three (3) months, of likely out-of-hours work;	
	(b) a description of the potential work, location and duration of the out-of-hours work;	Appendix A and B
	(c) the noise characteristics and likely noise levels of the work; and	Appendix A and B
	(d) likely mitigation and management measures which aim to achieve the relevant NMLs under Condition E43 (including the circumstances of when respite or relocation offers will be available and details about how the affected community can access these offers).	Section 3.3 Appendix A and B

3.2. Respite Eligibility

In accordance with the Sydney Metro Construction Noise and Vibration Standard receivers are eligible for respite during Out of Hours activities when works are predicted to:

- Exceed 20-30dB LAeq above the noise management levels during the Evening period (6pm to 10pm)
- Exceed 10-20dB LAeq above the noise management levels during the night time period (10pm to 7am)
- Receivers are identified as highly noise impacted (>75dB)

Additional mitigation measures as per the CNVIS are included in Table 3.2

Table 3.2 – Out of Hours Mitigation Measures as per the CNVIS

Time Period		Mitigation Measures Predicted L _{Aeq(15 minute)} noise level above NML			
		0 to 10 dB	10 to 20 dB	20 to 30 dB	> 30 dB
Approved construction hours	Mon-Fri (7.00 am - 6.00 pm)	-	LB	LB, M, SN	LB, M, SN
	Sat (8.00 am - 1.00 pm)				
	Sun/Pub Hol (Nil)				
OOHW (Evening)	Mon-Fri (6.00 pm - 10.00 pm)	LB	LB, M	LB, M, SN, RO	LB, M, SN, IB, PC, RO
	Sat (1.00 pm - 10.00 pm)				
	Sun/Pub Hol (8.00 am - 6.00 pm)				
OOHW (Night)	Mon-Fri (10.00 pm - 7.00 am)	LB	LB, M, SN, RO	LB, M, SN, IB, PC, RO, AA	LB, M, SN, IB, PC, RO, AA
	Sat (10.00 pm - 8.00 am)				
	Sun/Pub Hol (6.00 pm - 7.00 am)				

Note: Phone calls (PC), Monitoring (M), Individual briefings (IB), alternative accommodation (AA), specific notification (SN), letterbox drop (LB), duration reduction (DR), Project specific respite offer (RO)

3.3. Mitigation Measures and Planned Respite

For the proposed out of hours works the following general mitigation measures and respite will be implemented:

- Works to be undertaken in accordance with community agreement.
- Plant and equipment not in use to be switched off.
- Noise monitoring to be undertaken to confirm the noise predictions and inform additional mitigation measures as required.
- Lighting aspects to be facing down to minimise the potential for light spill
- Targeted, ongoing consultation with the highest noise impacted receivers to confirm ongoing acceptance of the work.

Part 4 – Compliance Discussion

4.1. Consultation Overview

Community consultation has been undertaken prior to commencement of out of hours works associated with Luddenham Road Gate 5 – Luddenham South earthworks in accordance with the CPBUI Community Communication Strategy (CCS) and Project Environmental Protection Licence (EPL) 21695.

Consultation includes:

- Consultation through the monthly update / community notifications
- Formal consultation with the receivers identified as triggering RO (10-20dB above NML). This was also used as a means to seek acceptance of the proposed works in accordance with the project EPL.

4.2. Notification – Monthly Update

In accordance with the CPBUI Community Consultation Strategy a monthly notification is distributed to all receivers around the SCAW project to detail:

- Upcoming Works
- Out of Hours Works
- Equipment
- Traffic changes,
- Maps,
- Request for feedback and contact information.

As part of this monthly notification SMWSA have included detail of prepared DNVIS for the works in the area and a request for feedback to inform alternative mitigation measures to address receiver specific requirements as per CoA E57. Received feedback would trigger a review and revision of the DNVIS.

An example monthly notification is provided as Appendix A.

4.3. Notification – Specific Notification

As per the project EPL and CCS a specific notification was distributed and signed by the identified impacted receivers prior to the upcoming out of hours works.

The notification included specific detail on the proposed works including:

- Work details,
- Timeline,
- “What to expect” – including proposed mitigation measures,
- Equipment,
- Changes to traffic, and
- Request for feedback.

This notification is provided as Appendix B.

4.4. Notification Distribution Map

The full distribution map for project notifications is detailed in Figure 2 below.

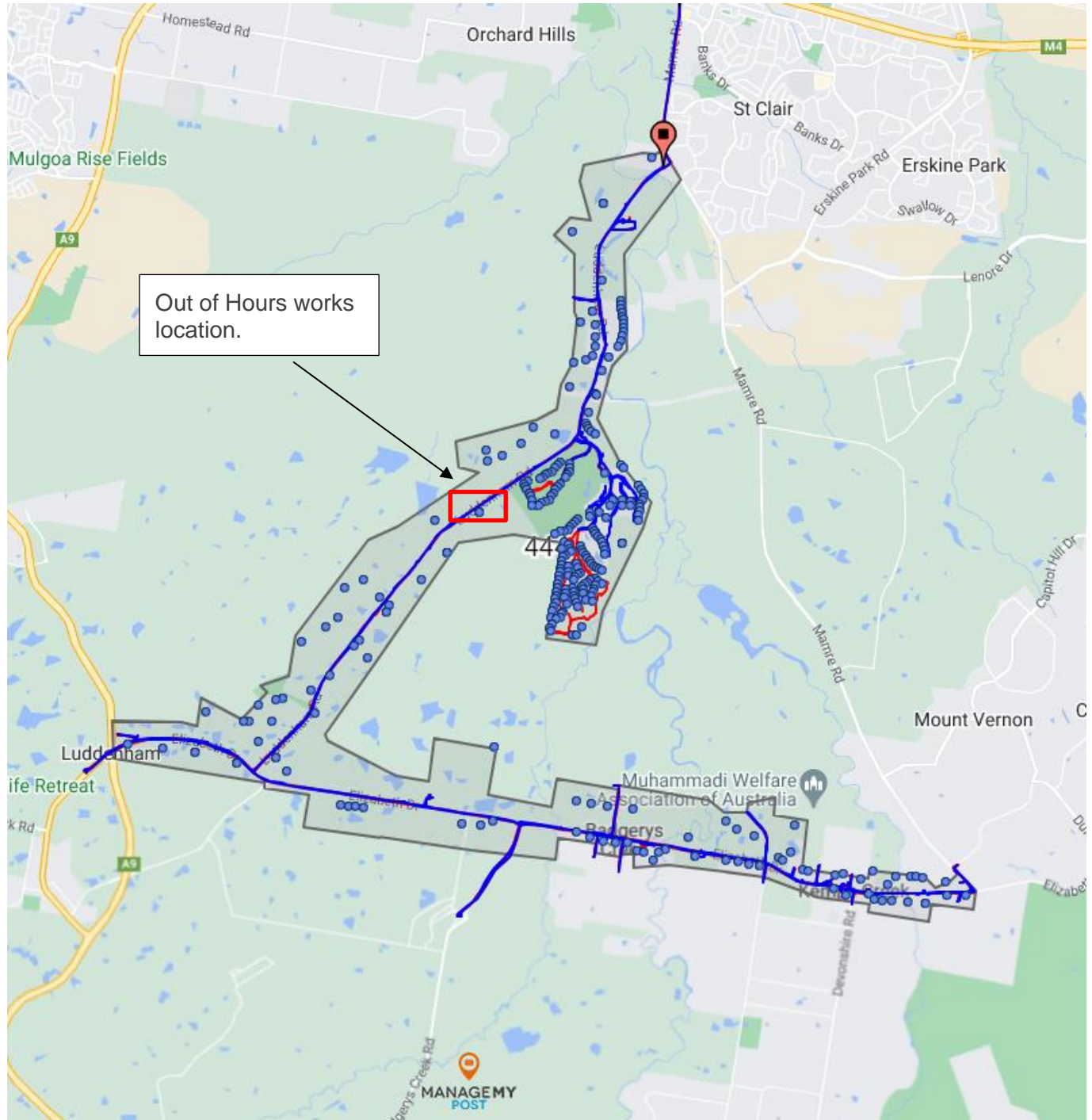


Figure 2 – Distribution Map for notifications

4.5. Consultation Records

Table 4.1 below includes the receivers identified in DNVIS 005 as the most highly noise impacted during the proposed out of hours works and the consultation undertaken with each property.

No receivers are considered “highly noise impacted” (>75dB) at any time during the works.

Table 4.1 – Receiver consultation records

Residential Address	Notification Undertaken	Time	Outcome
611-639 Luddenham Road, Luddenham	Monthly Notification	[REDACTED]	[REDACTED]
	Specific Notification -		
611A Luddenham Road, Luddenham	Monthly Notification		
	Specific Notification		
644-652 Luddenham Road, Luddenham	Monthly Notification		
	Specific Notification		

Note: these properties are identified the most highly noise impacted (10-20dB above NML’s) during the works activities and were targeted for community consultation and agreement in accordance with the project EPL.

This will be confirmed during monitoring and appropriate mitigation measures implemented in accordance with the CNVS through continued engagement.

Part 5 - Conclusion

All consultation undertaken to date including site wide works notifications, targeted notification and specific door knocks and phone calls to receivers identified as the most highly noise impacted /closest to the works has resulted in no feedback or preferences on specific mitigation measures or respite periods.

The standard mitigation measures and respite requirements established in the Sydney Metro Construction Noise and Vibration Standard and Project EPL 21695, as detailed in Section 3.3, will be implemented during the works and follow-up consultation will be undertaken by the CPBUI Community Engagement to ascertain the effectiveness of the implemented controls and seek additional feedback.

Appendices

Appendix A – Monthly Notification

Notification – Luddenham and Badgerys Creek

1 October 2023

Sydney Metro is Australia's biggest public transport project.

Sydney Metro – Western Sydney Airport is the new metro railway line which will service Greater Western Sydney and the new Western Sydney International (Nancy-Bird Walton) Airport. A city-shaping project, the 23-kilometre new railway will connect the Western Sydney Aerotropolis in the south with St Marys in the north – where customers can connect to the existing Sydney Trains suburban T1 Western Line. The NSW and Australian governments have a shared objective of having Sydney Metro – Western Sydney Airport operational when the airport opens for passenger services.

CPB Contractors and United Infrastructure Joint Venture (CPBUI JV) are completing the surface and civil alignment works contract for Sydney Metro – Western Sydney Airport.

Work in October will include:

- Ongoing construction of an access road for the future Luddenham Station to connect with Luddenham Road
- Deliveries of oversized infrastructure and sandstone for the project alignment
- Utility investigations and relocation work for the project alignment
- Deliveries and installation of viaduct segments
- Bridge piling and abutments work on Airport Land
- Viaduct piling and construction of piers and support beams over Cosgrove Creek
- Earthworks for the track alignment between the Warragamba Pipelines and Airport Land
- Stormwater drainage installation work
- Installation of barriers and fencing along the project alignment
- Landscaping and maintenance
- Fortnightly aerial land surveys of the surface alignment to inform the construction design and planning of the project.

What to expect:

- Work will be completed during standard construction hours **Monday to Friday, 7am to 6pm** and **Saturday, 8am to 1pm**. Nearby residents and businesses will be notified in advance of any likely out-of-hours work
- An increase in heavy vehicles entering the site compound off Elizabeth Drive, Badgerys Creek and Luddenham Road, Luddenham
- Surveying works will occur from a vehicle-mounted camera, surveyor on foot with a camera and tripod, and a drone to capture aerial data from construction sites
- Increased vehicle movements on surrounding roads

Please refer to maps overleaf showing work locations.



Out-of-hours work:

Deliveries and installation of oversized Infrastructure at the Western Sydney Airport Site Compound off Badgerys Creek Road will occur outside of standard construction hours, commencing **October** through to early **November 2023**.

The project team will continue with deliveries of sandstone to Luddenham South outside of standard construction hours through to **November 2023**.

The project team may carry out concrete pours inside the Luddenham site compounds up to **10pm, Monday to Friday**.

We have contacted directly impacted residents regarding these works. If you have any questions or would like to provide feedback regarding this out-of-hours work, please call our 24-hours community information hotline on **1800 717 703** or email sydneymetrowsa@transport.nsw.gov.au.

Equipment used:

Equipment for this work includes but is not limited to survey equipment including marker pegs and pickets, flagging, hand tools, mobile drill rig, excavator, backhoe, trucks, vacuum truck, portable toilets, temporary shipping container, water carts, light and heavy vehicles, surveying drone and drone remote control.

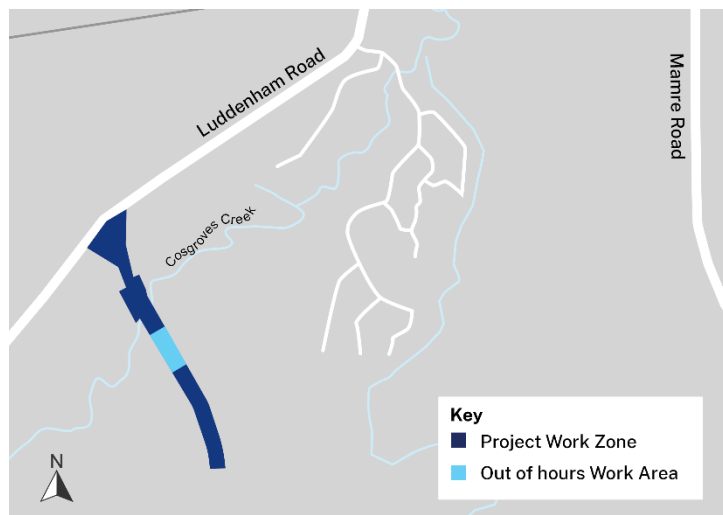
Changes to traffic, pedestrian, and cyclist routes:

During the work, traffic controllers and signage will be in place to assist motorists, pedestrians, and cyclists safely around work areas. Access to driveways and buildings will be always maintained.

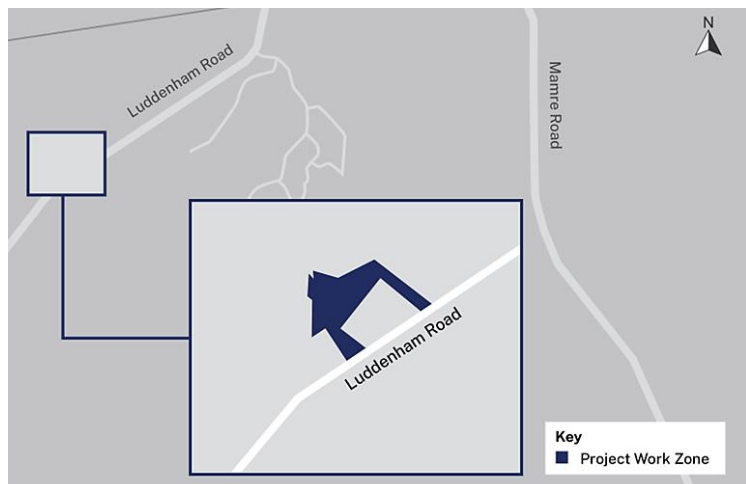
Map 1: Luddenham North section of the alignment



Map 2: Luddenham South section of the alignment



Map 3: Badgerys Creek section of the alignment



A Detailed Noise and Vibration Impact Statement (DNVIS) for the area has been prepared, including proposed mitigation measures such as noise reduction devices fitted to plant and equipment, turning off plant, machinery and vehicles when not in use, based on the DNVIS noise modelling. For further information on the modelling and mitigations, please contact the CPBUI community team on **1800 717 703** or sydneymetrowsa@transport.nsw.gov.au CPBUI's Community Communication Strategy is also available online at www.cpbcontractors.cc/SCAWstrategy (community).

Thank you for your cooperation while we complete this essential work.

Contact us



24-hour Community Information Line **1800 717 703**



sydneymetrowsa@transport.nsw.gov.au



Sydney Metro – Western Sydney Airport,
PO Box K659, Haymarket NSW 1240



Access information in over 100 languages

Download Sydney Metro Connect from the



Translating and interpreting service

If you need help understanding this information, please contact the Translating and Interpreting Service on **131 450** and ask them to call us on **1800 717 703**

Appendix B – Specific Notification

Address	Stakeholder	Date	Consultation Record
611 Luddenham Rd, Luddenham			
611a Luddenham Rd, Luddenham			
644 Luddenham Rd, Luddenham			

Out-of-Hours Work – Luddenham South

September 2023 to November 2023

Dear Resident,

Sydney Metro – Western Sydney Airport is the new metro railway line which will service Greater Western Sydney and the new Western Sydney International (Nancy-Bird Walton) Airport. A city-shaping project, the 23-kilometre new railway will connect the Western Sydney Aerotropolis in the south with St Marys in the north – where customers can connect to the existing Sydney Trains suburban T1 Western Line. The NSW and Australian governments have a shared objective of having Sydney Metro – Western Sydney Airport operational when the airport opens for passenger services.

CPB Contractors and United Infrastructure Joint Venture (CPBUI JV) was awarded the Surface and Civil Alignment Works contract for Sydney Metro – Western Sydney Airport in March 2022.

Change to timing for out of hours work:

The CPBUI JV project team is proposing to carry out work, outside of our current standard construction hours (**Monday to Friday 7am to 6pm and Saturday 8am to 1pm**).

We are seeking your agreement to carry out works from **Monday 25 September 2023** through to **Thursday 30 November 2023** (weather depending) 24 hours a day, between **7am Mondays** and **6pm Saturdays**.

What is the work proposed?

As part of Sydney Metro – Western Sydney Airport construction, important sandstone deliveries to the Luddenham South site compound are required. Some deliveries of sandstone to the site compound area will be undertaken at night. During this time, an average of two trucks every 15 minutes will enter the Luddenham South site compound, on Luddenham Road, Luddenham. The sandstone will be unloaded from the trucks south of Cosgroves Creek, with no further movement of materials occurring outside of standard construction hours.

Noise monitoring and on-the-spot community team checks will be carried out to assure compliance from the construction team and minimise impacts to our stakeholders.

Why is this work being proposed out of hours?

Staging the deliveries throughout the day lessens the number and frequency of heavy vehicles in the area during standard construction hours. This will reduce the impact on stakeholders and surrounding roads caused by heavy vehicles, and improve road safety for motorists.

The proposed weekly duration of construction work is a *maximum time period* and is determined by the project requirements.

We need your agreement to carry out work outside of standard construction hours:

To agree to this proposed out-of-hours work and/or to discuss any concerns you may have, please call 0456 250 783 (24/7) and request to speak to Joel Warne, Stakeholder and Community Relations Manager for the Surface and Civil Alignment Works project or email enquiries@cpbuijv.com.au

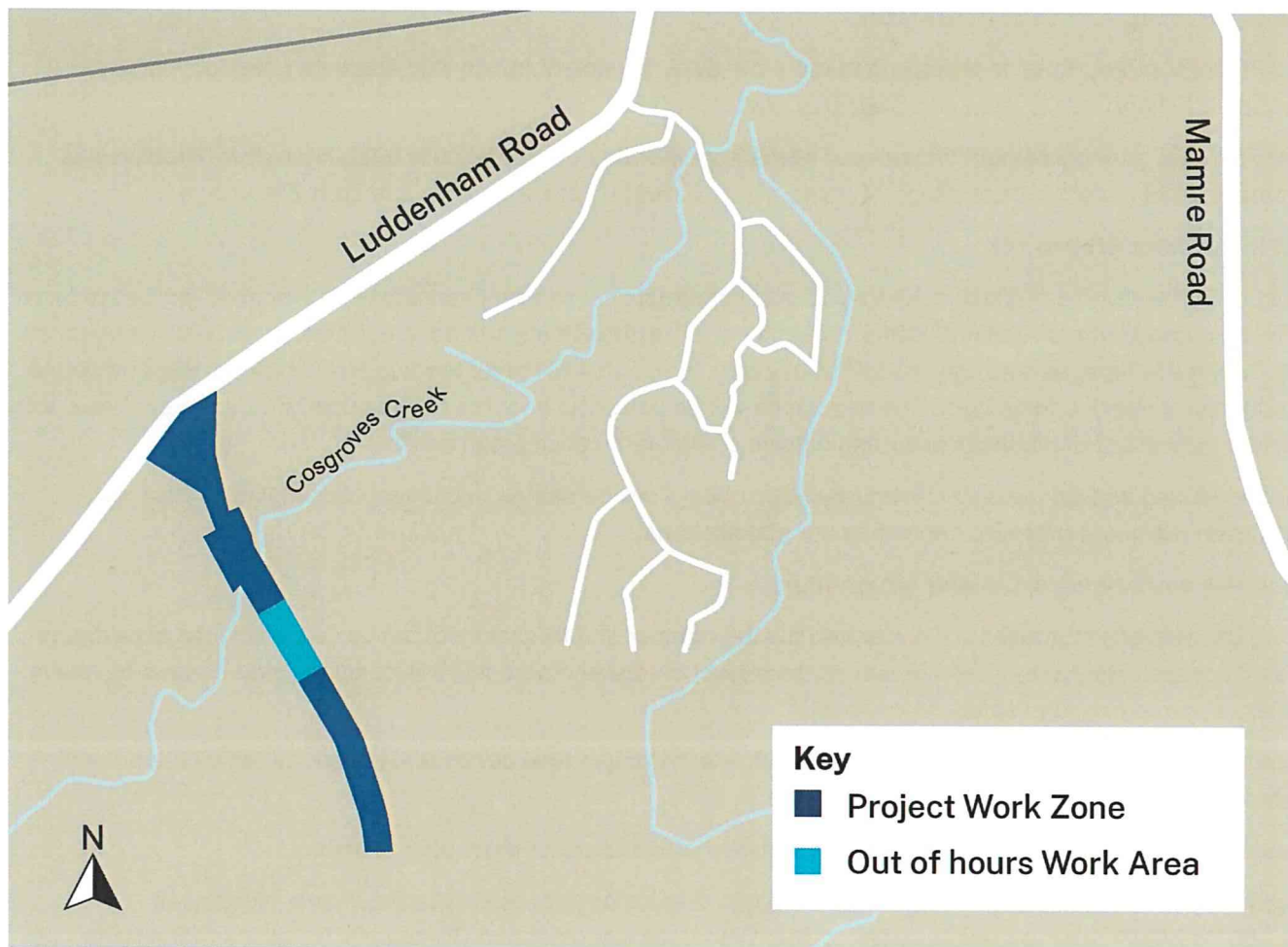
Equipment used:

Equipment for this work includes but is not limited to survey equipment including excavator, backhoe, trucks, lighting, portable toilets, site demountable sheds, light and heavy vehicles.

Address: 611 Luddenham Road, Luddenham NSW 2745

Please see map below showing the work location inside the Luddenham South site compound.

Luddenham South site compound



 **1800 717 703** Community information line open 24 hours

 **sydneymetroswa@transport.nsw.gov.au**

 Sydney Metro – Western Sydney Airport, PO Box K659, Haymarket NSW 1240

 If you need an interpreter, contact TIS National on **131 450** and ask them to call **1800 717 703**

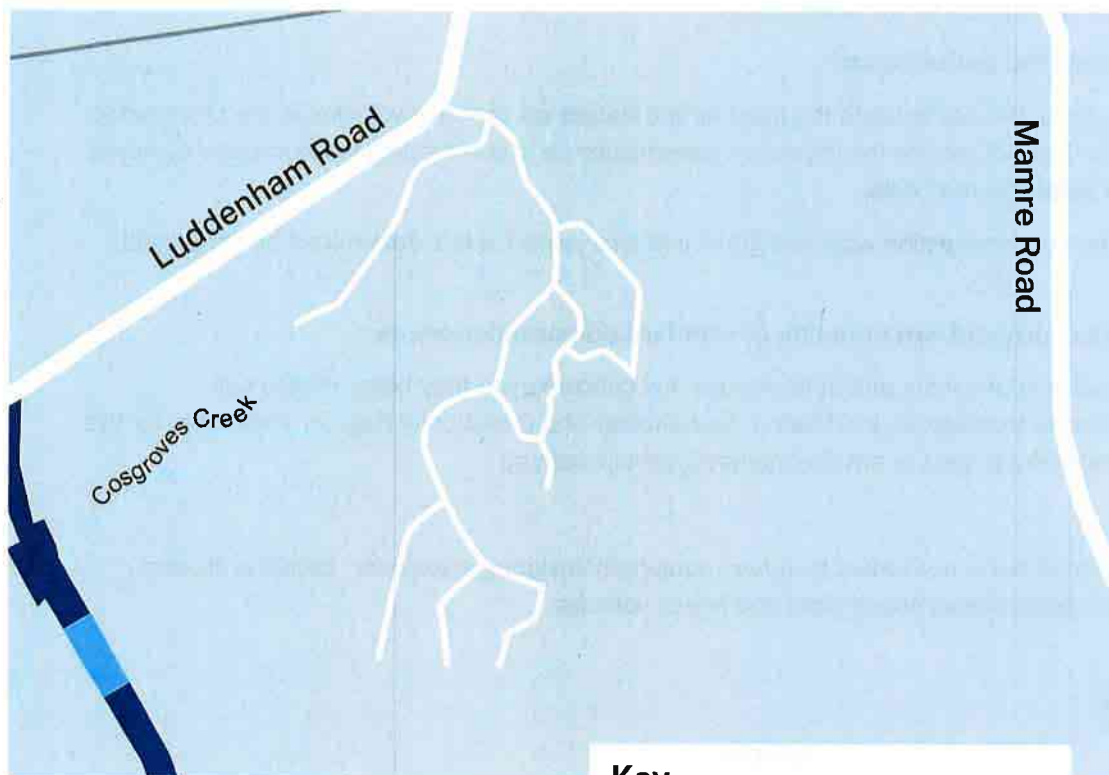


Sydney Metro - Western Sydney Airport

Address: 644-658 Luddenham Road, Luddenham NSW 2745

Please see map below showing the work location inside the Luddenham South site compound.

Luddenham South site compound



0 717 703

sydneymetro.info

Out-of-Hours Work – Luddenham South

September 2023 to November 2023

Dear Resident,

Sydney Metro – Western Sydney Airport is the new metro railway line which will service Greater Western Sydney and the new Western Sydney International (Nancy-Bird Walton) Airport. A city-shaping project, the 23-kilometre new railway will connect the Western Sydney Aerotropolis in the south with St Marys in the north – where customers can connect to the existing Sydney Trains suburban T1 Western Line. The NSW and Australian governments have a shared objective of having Sydney Metro – Western Sydney Airport operational when the airport opens for passenger services.

CPB Contractors and United Infrastructure Joint Venture (CPBUI JV) was awarded the Surface and Civil Alignment Works contract for Sydney Metro – Western Sydney Airport in March 2022.

Change to timing for out of hours work:

The CPBUI JV project team is proposing to carry out work, outside of our current standard construction hours (**Monday to Friday 7am to 6pm** and **Saturday 8am to 1pm**).

We are seeking your agreement to carry out works from **Monday 25 September 2023** through to **Thursday 30 November 2023** (weather depending); 24 hours a day, between **7am Mondays** and **6pm Saturdays**.

What is the work proposed?

As part of Sydney Metro – Western Sydney Airport construction, important sandstone deliveries to the Luddenham South site compound are required. Some deliveries of sandstone to the site compound area will be undertaken at night. During this time, an average of two trucks every 15 minutes will enter the Luddenham South site compound, on Luddenham Road, Luddenham. The sandstone will be unloaded from the trucks south of Cosgroves Creek, with no further movement of materials occurring outside of standard construction hours.

Noise monitoring and on-the-spot community team checks will be carried out to assure compliance from the construction team and minimise impacts to our stakeholders.

Why is this work being proposed out of hours?

Staging the deliveries throughout the day lessens the number and frequency of heavy vehicles in the area during standard construction hours. This will reduce the impact on stakeholders and surrounding roads caused by heavy vehicles, and improve road safety for motorists.

The proposed weekly duration of construction work is a *maximum time period* and is determined by the project requirements.

We need your agreement to carry out work outside of standard construction hours:

To agree to this proposed out-of-hours work and/or to discuss any concerns you may have, please call 0456 250 783 (24/7) and request to speak to Joel Warne, Stakeholder and Community Relations Manager for the Surface and Civil Alignment Works project or email enquiries@cpbuijv.com.au

Equipment used:

Equipment for this work includes but is not limited to survey equipment including excavator, backhoe, trucks, lighting, portable toilets, site demountable sheds, light and heavy vehicles.