

E57 Consultation Report

SCAW Viaduct – Luddenham Road Crossing

Western Sydney Airport – Surface and Civil Alignment Works (SCAW)

Project Name	Sydney Metro – Western Sydney Airport, Surface and Civil Alignment Works
Project Number	N81150
Revision	A

Distribution and Authorisation

Document Control

The CPBUI JV Environment Manager is responsible for ensuring this report is reviewed and approved. The Environment and/or Community Engagement Manager is responsible for updating this report, as required.

Revision Details

Rev.	Details
A	First draft

Table of contents

Part 1 Overview	4
1. Introduction	4
1.1. Project Background	4
1.2. Project description	4
1.2.1. SCAW scope of works	5
1.2.2. Out of Hours Scope of Works	6
Part 2 – Scope of this report	7
Part 3 – Summary of Requirements	8
3.1. Condition of Approval (SSI 10051)	8
3.2. Respite Eligibility	9
3.3. Mitigation Measures and Planned Respite	10
Part 4 – Compliance Discussion	11
4.1. Consultation Overview	11
4.2. Notification – Monthly Update	11
4.3. Notification – Specific Notification	11
Part 5 - Conclusion	13
Appendices	14
Appendix A – Monthly Notification	15
Appendix B – Specific Notification	16

Part 1 Overview

1. Introduction

1.1. Project Background

The SCAW Project will be undertaken on Darug Country and will form part of the future Western Parkland City. The Project involves the construction and operation of a new 23km metro rail line that extends from the existing Sydney Trains suburban T1 western line (at St Marys) in the north to the Aerotropolis (at Bringelly) in the south. The alignment includes a combination of tunnels and civil structures, including viaducts, bridges, and surface and open-cut troughs between the two tunnel sections. The Project also includes six new metro stations, and a stabling and maintenance facility and operational control centre at Orchard Hills. The SCAW package is the second major contract package to be procured for the Project. The successful and timely completion of the SCAW package is critical to the subsequent construction activities and ultimate completion of the entire Project.

The Sydney Metro Western Sydney Airport will become the transport spine for Greater Western Sydney, connecting communities and travellers with the new Western Sydney International (Nancy-Bird Walton) Airport (referred to as Western Sydney International) and the growing region.

1.2. Project description

The Project forms part of the broader Sydney Metro network. It involves the construction and operation of a 23km new metro rail line that extends from the existing Sydney Trains suburban T1 Western Line (at St Marys) in the North and the Aerotropolis (at Bringelly) in the South. The alignment includes a combination of tunnels and civil structures, including viaduct, bridges, surface and open-cut troughs between the two tunnel sections (Figure 1).

1.2.1. SCAW scope of works

The scope for the SCAW package includes approximately 10.6km of alignment up to the underside of track formation from Orchard Hills to the Western Sydney International (WSI) airport. This includes approximately:

- 3.6 kilometre of viaduct
 - 400 metres of viaduct over Blaxland Creek
 - 660 metres of viaduct over the Patons Lane area and un-named creek
 - 2.5km of viaduct in the Luddenham Road area including across the Warragamba pipeline, at Luddenham Station, across Luddenham Road and across Cosgrove Creek
- 205 metres of bridges
 - An over rail bridge, approximately 180m long, over the proposed M12 Motorway
 - An over rail bridge, approximately 25m long, over the drainage swale on the WSI airport site
- 6.9km of at-grade alignment
 - 600m at Orchard Hills, south of Lansdowne Road
 - 1.6km alongside the stabling maintenance facility in Orchard Hills
 - 900m to the north of the Warragamba pipelines
 - 1.1km north of the proposed M12 motorway
 - 1.4km south of the proposed M12 Motorway on Elizabeth Drive
 - 1.3km within the Airport site from the northern boundary to the Airport Business Park Station
- Temporary and permanent access roads.

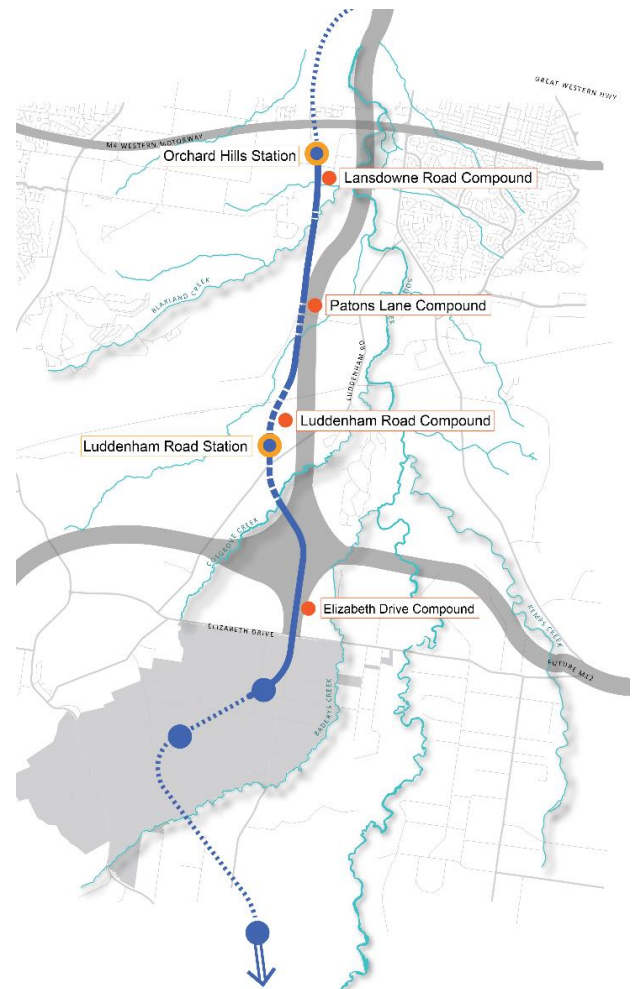


Figure 1 – Overview of the SCAW Project

1.2.2. Out of Hours Scope of Works

Some activities such as construction and utility works on busy roads must be carried out at night for the safety of workers and motorists.

Out of Standard Construction Hours Viaduct construction works are proposed to be undertaken over a three-week period, inclusive of up to three blocks of five consecutive night shifts (Monday to Friday) from the 6th November 2023 due to the unavoidable impacts on the safety of public road users on Luddenham Road.

Works to be undertaken during the viaduct installation includes:

- Segment and Parapet lifting and installation,
- Formwork and steel fixing,
- Concrete pours,

This work is programmed to complete on the 26th November 2023 and are detailed in SCAW Detailed Noise and Vibration Impact Statement (DNVIS) 004 – Patons to Cosgroves Creek and the location is provided in Figure 2 on page 12.

Part 2 – Scope of this report

This E57 Community Consultation Report provides a summary of consultation undertaken in accordance with Condition of Approval E57 with respect to Out of Hours Viaduct activities proposed across Luddenham Road, as assessed in SCAW DNVIS 004 – Patons to Cosgroves Creek.

Out-of-Hours Works – Community Consultation on Respite

E57 In order to undertake out-of-hours work outside the work hours specified under Condition E38, appropriate respite periods for the out-of-hours work must be identified in consultation with the community at each affected location on a regular basis. This consultation must include (but not be limited to) providing the community with:

- (a) a progressive schedule for periods no less than three (3) months, of likely out-of-hours work;
- (b) a description of the potential work, location and duration of the out-of-hours work;
- (c) the noise characteristics and likely noise levels of the work; and
- (d) likely mitigation and management measures which aim to achieve the relevant NMLs under Condition E43 (including the circumstances of when respite or relocation offers will be available and details about how the affected community can access these offers).

The outcomes of the community consultation, the identified respite periods and the scheduling of the likely out-of-hour work must be provided to the ER, EPA and the Planning Secretary prior to the out-of-hours work commencing.

Note: Respite periods can be any combination of days or hours where out-of-hours work would not be more than 5 dB(A) above the RBL at any residence.

Part 3 – Summary of Requirements

3.1. Condition of Approval (SSI 10051)

The requirements of Condition of Approval E57 and where they have been addressed in this report is detailed in Table 3.1 below.

Table 3.1 – Summary of requirements

Condition	Requirement	Report Reference
CoA E57	Appropriate respite periods for the out-of-hours work must be identified in consultation with the community at each affected location on a regular basis. This consultation must include (but not be limited to) providing the community with:	Section 4.2 Appendix A
	(a) a progressive schedule for periods no less than three (3) months, of likely out-of-hours work;	
	(b) a description of the potential work, location and duration of the out-of-hours work;	Appendix A Appendix B
	(c) the noise characteristics and likely noise levels of the work; and	Appendix A Appendix B
	(d) likely mitigation and management measures which aim to achieve the relevant NMLs under Condition E43 (including the circumstances of when respite or relocation offers will be available and details about how the affected community can access these offers).	Section 3.3 Appendix A Appendix B

3.2. Respite Eligibility

In accordance with the Sydney Metro Construction Noise and Vibration Standard receivers are eligible for respite during Out of Hours activities when works are predicted to:

- Exceed 20-30dB LAeq above the noise management levels during the Evening period (6pm to 10pm)
- Exceed 10-20dB LAeq above the noise management levels during the night time period (10pm to 7am)
- Receivers are identified as highly noise impacted (>75dB)

Additional mitigation measures as per the CNVIS are included in Table 3.2

Table 3.2 – Out of Hours Mitigation Measures as per the CNVIS

Time Period		Mitigation Measures Predicted L _{Aeq(15 minute)} noise level above NML			
		0 to 10 dB	10 to 20 dB	20 to 30 dB	> 30 dB
Approved construction hours	Mon-Fri (7.00 am - 6.00 pm)	-	LB	LB, M, SN	LB, M, SN
	Sat (8.00 am - 1.00 pm)				
	Sun/Pub Hol (Nil)				
OOHW (Evening)	Mon-Fri (6.00 pm - 10.00 pm)	LB	LB, M	LB, M, SN, RO	LB, M, SN, IB, PC, RO
	Sat (1.00 pm - 10.00 pm)				
	Sun/Pub Hol (8.00 am - 6.00 pm)				
OOHW (Night)	Mon-Fri (10.00 pm - 7.00 am)	LB	LB, M, SN, RO	LB, M, SN, IB, PC, RO, AA	LB, M, SN, IB, PC, RO, AA
	Sat (10.00 pm - 8.00 am)				
	Sun/Pub Hol (6.00 pm - 7.00 am)				

Note: Phone calls (PC), Monitoring (M), Individual briefings (IB), alternative accommodation (AA), specific notification (SN), letterbox drop (LB), duration reduction (DR), Project specific respite offer (RO)

3.3. Mitigation Measures and Planned Respite

The proposed Out of Hours works are being conducted in accordance with a specific Environmental Protection Licence (EPL) condition (see below) allowing OOHV Viaduct works up to 5 nights per week during Nov/December 2023 to facilitate the crossing of Luddenham Road.

EPL 21695 Condition L5.11

- L5.11 The licensee may undertake works outside of standard construction hours specified in condition L5.1 to conduct viaduct construction across Luddenham Road on the SMWSA SCAW Alignment.
- a) Works undertaken in accordance with condition L5.11 must:
- i. be conducted over Monday to Friday nights only, between November to December 2023; and
 - ii. be undertaken in accordance with a Road Occupancy Licence.
- b) The licensee must:
- i. Notify potential affected noise sensitive receivers in accordance with condition L5.5;
 - ii. Comply with condition L5.8 (a), (b), (f) & (g); and
 - iii. Provide the EPA with a Noise Monitoring Report within 5 business days of completion of the works.

As a result of the specific approval the following general mitigation measures and respite will be implemented where possible:

- Plant and equipment not in use to be switched off.
- Noise monitoring to be undertaken to confirm the noise predictions and inform additional mitigation measures as required.
- Lighting aspects to be facing down to minimise the potential for light spill,
- Plant and equipment to be orientated to maximise screening where possible,
- Ongoing consultation with the more highly noise impacted receivers (Luddenham Road residents) to seek feedback on the works as it progresses and determine reasonable and feasible measures to address any raised concerns.

Part 4 – Compliance Discussion

4.1. Consultation Overview

Community consultation has been undertaken prior to commencement of Out of Hours Works associated with the SCAW Viaduct across Luddenham Road / DNVIS 004 in accordance with the CPBUI Community Communication Strategy (CCS) and EPL 21695.

Consultation included:

- Formal letterbox distribution of a written notification to all residents of Twin Creeks and Luddenham Road for both
 - Monthly project update, including 3 months look-ahead.
 - Specific Out of Hours Works notifications.

4.2. Notification – Monthly Update

In accordance with the CPBUI Community Consultation Strategy a Monthly notification is distributed to all receivers around the SCAW project to detail:

- Upcoming Works
- Out of Hours Works
- Equipment
- Traffic changes,
- Maps,
- Request for feedback and contact information.

As part of this Monthly notification SMWSA have included detail of prepared DNVIS for the works in the area and a request for feedback to inform alternative mitigation measures to address receiver specific requirements as per CoA E57. Received feedback would trigger a review and revision of the DNVIS.

The Monthly notification for November 2023 is provided as Appendix A.

4.3. Notification – Specific Notification

As per the project EPL and CCS a specific notification is distributed no less than 7 days prior to upcoming Out of Hours Works. For the proposed works a specific notification was issued to the residents of Twin Creeks and Luddenham Road on the 30th October 2023.

The notification included specific detail on the proposed works including:

- Work details,
- Timeline,
- “What to expect” – including proposed mitigation measures,
- Equipment,
- Changes to traffic, and
- Request for feedback.

This notification is provided as Appendix B.

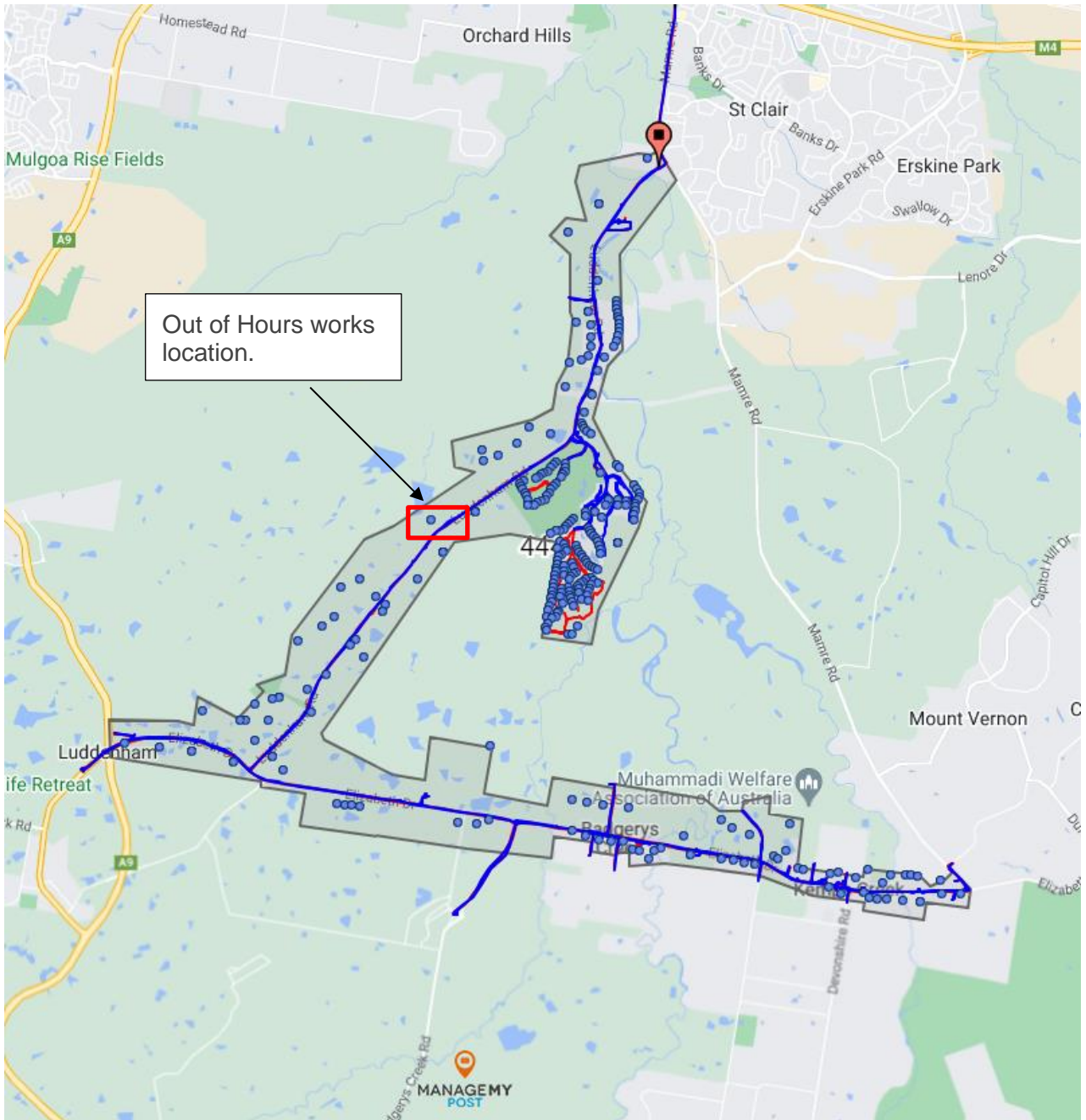


Figure 2 – Distribution Map for notifications

Part 5 - Conclusion

All consultation undertaken to date has resulted in no feedback or preferences on specific mitigation measures or respite periods.

Mitigation measures and respite provision requirements established in the Sydney Metro Construction Noise and Vibration Standard and Project EPL 21695, as detailed in Section 3.3, will be substantially implemented during the works and follow-up consultation will be undertaken by the CPBUI Community Engagement to ascertain feedback on the works and opportunities for improvement of noise mitigation measures or additional respite.

As per E57, if any feedback is received it will be considered and implemented where feasible, and any specific feedback or preferences on mitigation measures included in a revision of the DNVIS.

Appendices

Appendix A – Monthly Notification

Notification – Luddenham and Badgerys Creek

1 November 2023

Sydney Metro is Australia's biggest public transport project.

Sydney Metro – Western Sydney Airport is the new metro railway line which will service Greater Western Sydney and the new Western Sydney International (Nancy-Bird Walton) Airport. A city-shaping project, the 23-kilometre new railway will connect the Western Sydney Aerotropolis in the south with St Marys in the north – where customers can connect to the existing Sydney Trains suburban T1 Western Line. The NSW and Australian governments have a shared objective of having Sydney Metro – Western Sydney Airport operational when the airport opens for passenger services.

CPB Contractors and United Infrastructure Joint Venture (CPBUI JV) are completing the surface and civil alignment works contract for Sydney Metro – Western Sydney Airport.

Work in November will include:

- Ongoing construction of the access road for the future Luddenham Metro Station to connect with Luddenham Road
- Deliveries of oversized infrastructure and sandstone
- Installation of viaduct segments and parapet over Luddenham Road
- Transportation of excess spoil material from the project site
- Bridge piling and abutments work on Airport Land
- Viaduct piling and construction of piers and support beams over Cosgrove Creek
- Deliveries and installation of viaduct parapets and drainage work finishing
- Earthworks for the track alignment between Warragamba Pipelines and Western Sydney Airport land
- Stormwater drainage installation work
- Installation of barriers and fencing
- Fortnightly aerial land surveys of the surface alignment to inform the construction design and planning of the project.

What to expect:

- Work will be completed during standard construction hours **Monday to Friday, 7am to 6pm** and **Saturday, 8am to 1pm**. Nearby residents and businesses will be notified in advance of any likely out-of-hours work
- An increase in heavy vehicles entering the site compound off Elizabeth Drive, Badgerys Creek and Luddenham Road, Luddenham
- Surveying work will occur via a vehicle-mounted camera, surveyor on foot with a camera and tripod, and a drone to capture aerial data from construction sites
- Increased vehicle movements on surrounding roads
- Please refer to maps overleaf showing work locations.



Out-of-hours work:

To ensure safety and efficiency, the project team will be installing viaduct segments over Luddenham Road outside of standard construction hours, for three weeks commencing **6 November 2023**.

Drainage installation within the Elizabeth Drive site compound will be performed out of standard hours from **Friday 17 November** to **Monday 20 November 2023**.

Deliveries of sandstone to Luddenham South will continue outside of standard construction hours until the end of **November 2023**.

The project team may carry out concrete pours inside the Luddenham site compounds up to **10pm, Monday to Friday**.

We have contacted directly impacted residents regarding these works. If you have any questions or would like to provide feedback regarding this out-of-hours work, please call our 24-hours community information hotline on **1800 717 703** or email sydneytrowsa@transport.nsw.gov.au.

Equipment used:

Equipment for this work includes but is not limited to hand tools, generators, lighting towers, mobile drill rig, excavator, backhoe, trucks, vacuum truck, portable toilets, temporary shipping container, water carts, light and heavy vehicles, surveying drone and drone remote control.

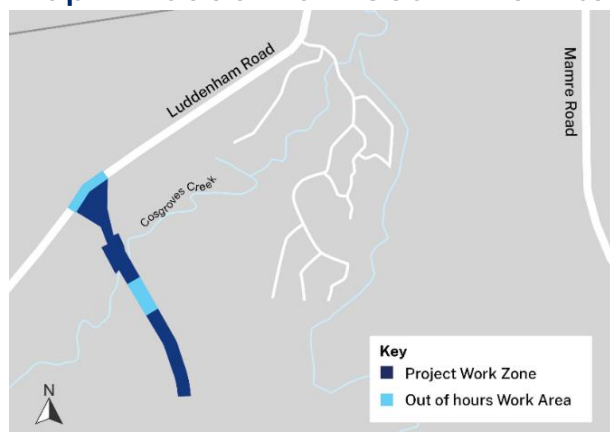
Changes to traffic, pedestrian, and cyclist routes:

During the work, traffic controllers and signage will be in place to assist motorists, pedestrians, and cyclists safely around work areas. Access to driveways and buildings will be always maintained.

Map 1: Luddenham North work location



Map 2: Luddenham South work location



Map 3: Badgerys Creek work location



Detailed Noise and Vibration Impact Statement (DNVIS) for the area has been prepared including proposed mitigation measures as a result of noise modelling. We invite your feedback if alternative measure may be required for your specific circumstances. CPBUI's Community Communication Strategy is available online at www.cpbcontractors.cc/SCAWstrategy (community). To provide feedback on the plan, please contact the CPBUI community team on **1800 717 703** or sydneymetrowsa@transport.nsw.gov.au.

Thank you for your cooperation while we complete this essential work.

Contact us



24-hour Community Information Line **1800 717 703**



sydneymetrowsa@transport.nsw.gov.au



Sydney Metro – Western Sydney Airport,
PO Box K659, Haymarket NSW 1240



Access information in over 100 languages
Download **Sydney Metro Connect** from the
App store or get it on Google Play.



Translating and interpreting service

If you need help understanding this information, please contact the Translating and Interpreting Service on **131 450** and ask them to call us on **1800 717 703**

Appendix B – Specific Notification

Notification –Luddenham Road, viaduct installation Out-of-hours work

November 2023

Sydney Metro – Western Sydney Airport is the new metro railway line which will service Greater Western Sydney and the new Western Sydney International (Nancy-Bird Walton) Airport. A city-shaping project, the 23-kilometre new railway will connect the Western Sydney Aerotropolis in the south with St Marys in the north – where customers can connect to the existing Sydney Trains suburban T1 Western Line. The NSW and Australian governments have a shared objective of having Sydney Metro – Western Sydney Airport operational when the airport opens for passenger services.

CPB Contractors and United Infrastructure Joint Venture (CPBUI JV) are completing the surface and civil alignment works contract for Sydney Metro – Western Sydney Airport.

Out-of-hours work:

Essential work will be carried out to install a section of elevated viaduct over Luddenham Road. The out-of-hours work will be carried out up to **five nights** a week **Monday to Friday, 6pm to 5am**, between **Monday 6 November 2023** and **Monday 27 November 2023**, weather depending. Work will also take place during standard construction hours **Monday to Friday, 7am to 6pm** and **Saturday, 8am to 1pm** during this time.

The proposed weekly duration of construction work is a *maximum time period* and is determined by the project requirements.

Carrying out some of this work out-of-hours will minimise impact and safety risks on the local community, road users and our workers.

Work will include:

- Installation of oversized concrete viaduct segments
- Operation of cranes, heavy vehicles, and machinery
- Full road closure on Luddenham Road with detours in place
- Restoration of the area upon completion.

What to expect:

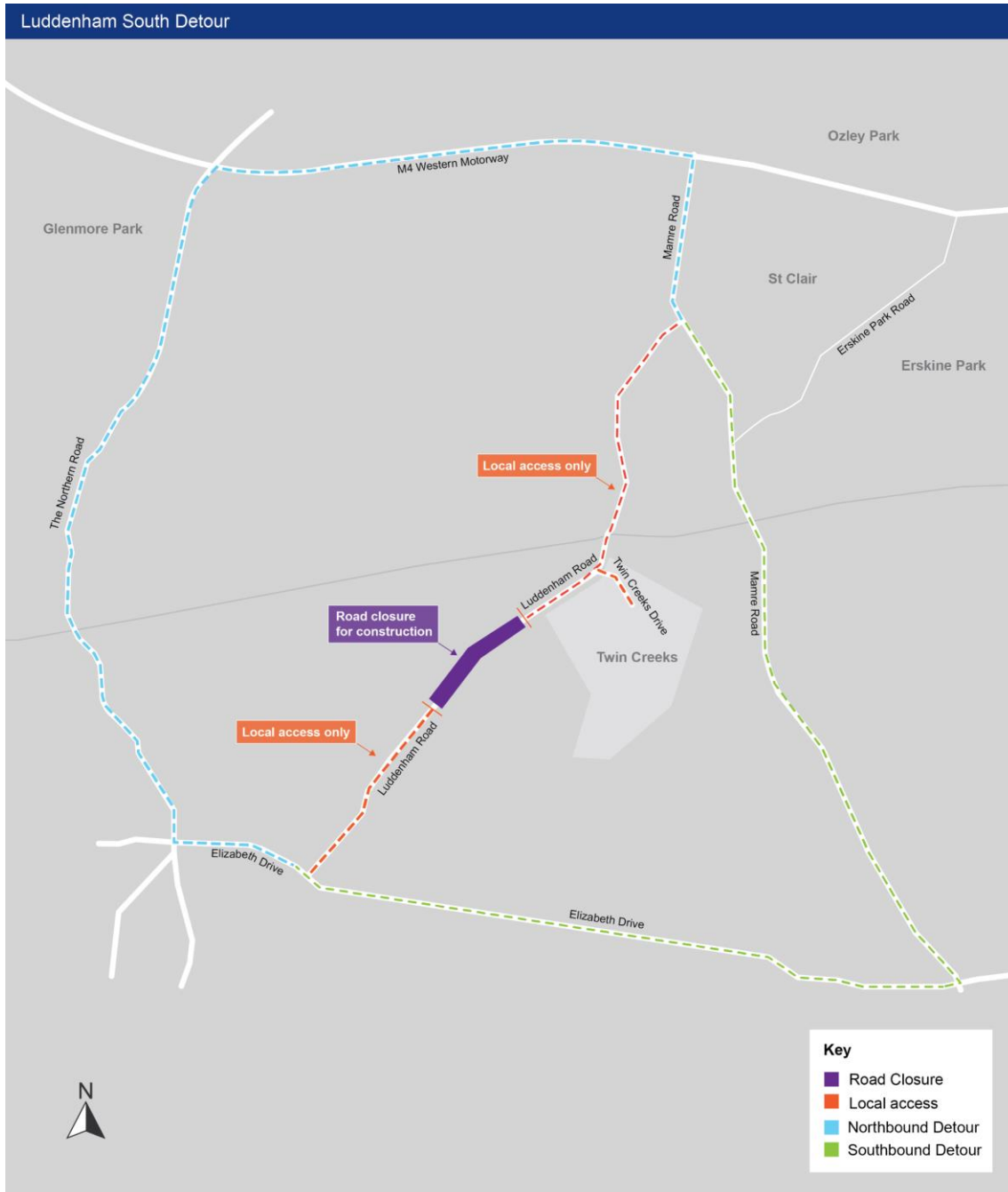
- To complete the work safely, a full road closure with detours will be in place. Traffic Control will be onsite to assist local traffic and to maintain access for Emergency Services
- An increase in heavy vehicles and machinery at this location.
- We will try minimise noise impacts through work scheduling and monitoring, and ensuring all equipment and vehicles are turned off when not in use

Equipment used:

Equipment for this work includes but is not limited to survey equipment including elevated work platform, grinders, hand tools, trucks, water carts, lighting towers, portable traffic lights, generators, light and heavy vehicles.

Please see map below showing the work location and related road detours.

Luddenham Road work location



- 1800 717 703** Community information line open 24 hours
- sydneymetrowsa@transport.nsw.gov.au**
- Sydney Metro – Western Sydney Airport, PO Box K659, Haymarket NSW 1240
- If you need an interpreter, contact TIS National on **131 450** and ask them to call **1800 717 703**