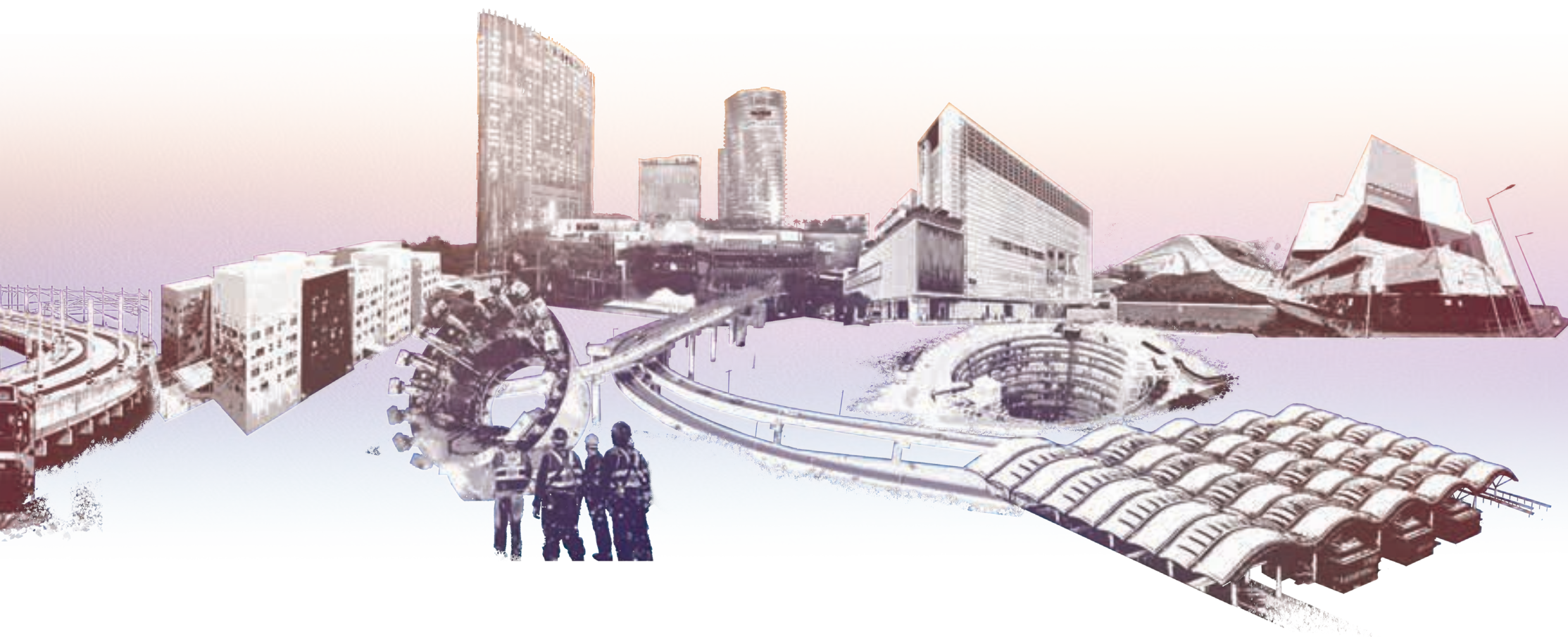




50 year
journey
in Asia

a 50 year journey in Asia







Contents

01

Foreword

4

02

Our History

6

03

Our Milestones

8

04

Our Legacy

10

05

Our Talent

110



01

FOREWORD

As we celebrate the 50th anniversary of Leighton Asia, we look back on a journey marked by innovation, dedication and excellence. Our journey began in 1974 with our establishment in Hong Kong. Since then we have expanded our footprint into Indonesia, Macao, Singapore, the Philippines, India, Malaysia, Thailand and Vietnam. During this time, Leighton Asia has delivered world-class infrastructure projects that have driven regional development.

Over these five decades, our steadfast commitment and pursuit of excellence have been the bedrock of our success. By combining best practices in international project delivery with our extensive local knowledge, we have consistently set benchmarks in innovation, safety and quality.

This commemorative photo album captures the essence and milestones of our journey. It features 50 iconic projects under various sectors in the regions we operate in. Each project is a testament to our core expertise and strong commitment to creating lasting impacts on the communities we serve.

Looking forward, we see boundless opportunities and growth prospects. Our commitment to innovation and sustainability will continue to guide us as we embark on new ventures and expand our horizons. The potential for Leighton Asia is limitless, and together as the "One Leighton Asia Team", we will continue to reach new heights.

Thank you for being part of this incredible journey. Let us celebrate our history and look forward to a future filled with promise and success.

We look forward to celebrating many more milestones together.



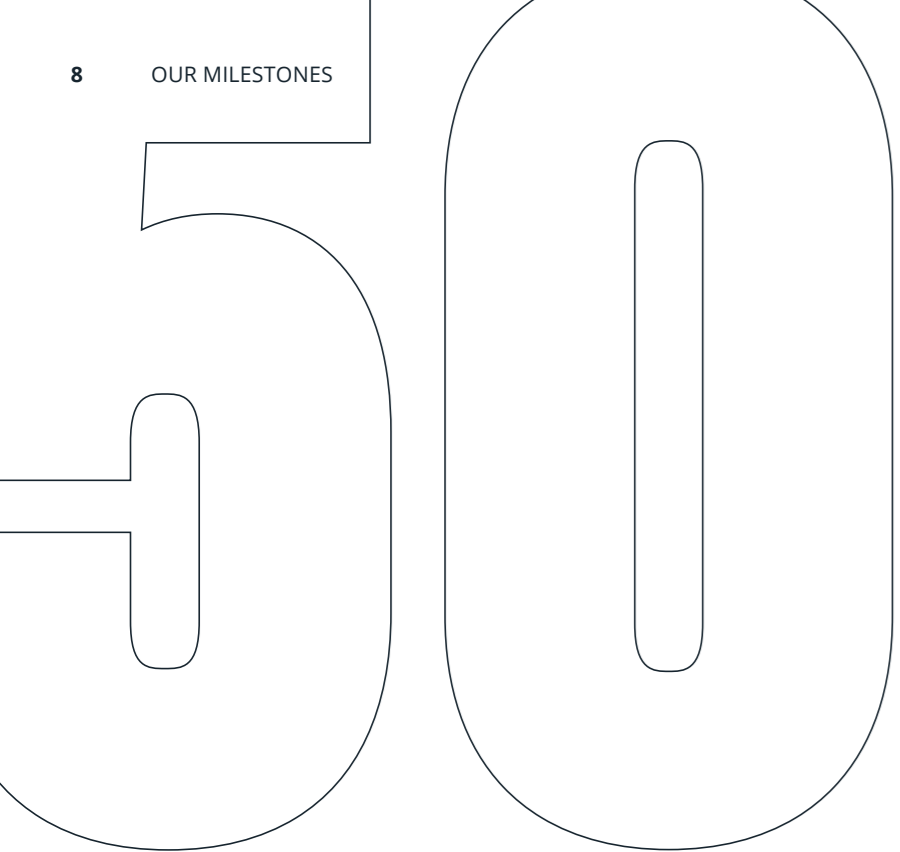
Leighton Asia is the CIMIC Group's construction focused business in Asia.

Established in 1974, Leighton Asia has delivered significant infrastructure and building projects across Asia.

Starting from Discovery Bay and the Tuen Mun Reclamation in Hong Kong in the 1980s, we've continued to deliver various iconic projects such as the New Australian Embassy in Indonesia in the 1990s, and the Phillip Morris Greenfield Project and North Luzon Expressway in the Philippines in the 2000s, the Express Rail Link West Kowloon Terminus Station in Hong Kong and the Camellias in India in the 2010s, and the North South Commuter Railway in the Philippines and Deep Tunnel Sewerage System Phase 2 in Singapore in the 2020s.

Over the years, we've grown our presence into Indonesia, Macao, Singapore, the Philippines, India, Malaysia, Thailand and Vietnam, delivering value-added solutions, bespoke and high-quality projects, and generating sustainable returns for our clients.

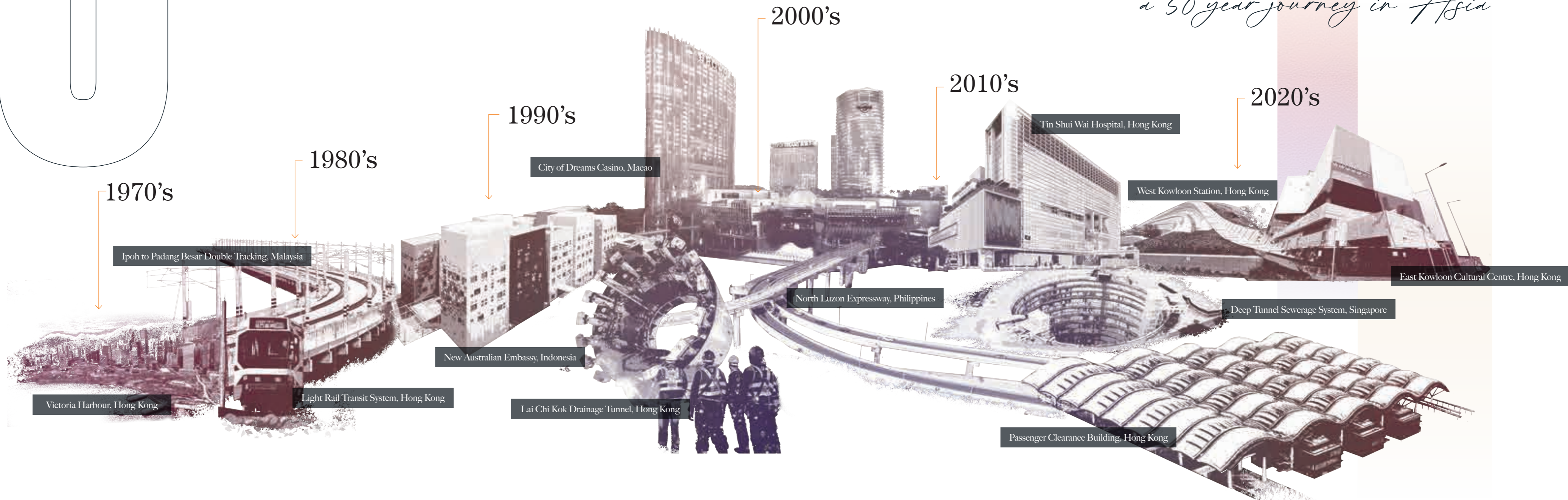




03

OUR MILESTONES

a 50 year journey in Asia



1970's

Ipoh to Padang Besar Double Tracking, Malaysia

Victoria Harbour, Hong Kong

1980's

Light Rail Transit System, Hong Kong

1990's

New Australian Embassy, Indonesia

Lai Chi Kok Drainage Tunnel, Hong Kong

2000's

City of Dreams Casino, Macao

North Luzon Expressway, Philippines

2010's

Tin Shui Wai Hospital, Hong Kong

Passenger Clearance Building, Hong Kong

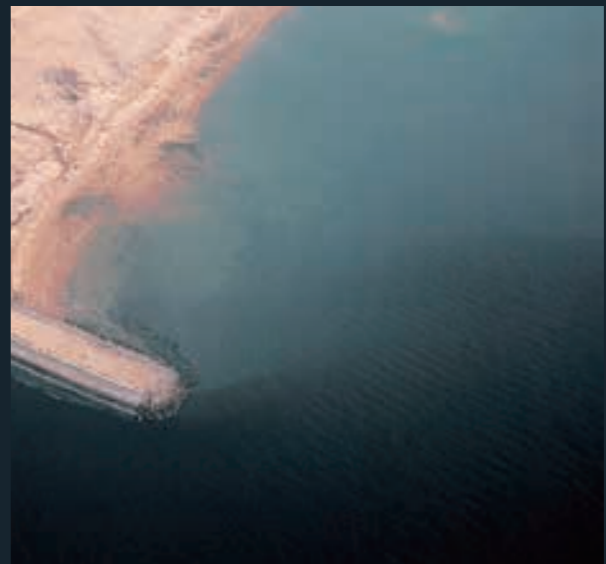
2020's

West Kowloon Station, Hong Kong

Deep Tunnel Sewerage System, Singapore

East Kowloon Cultural Centre, Hong Kong

04 OUR LEGACY



TUEN MUN RECLAMATION

In the 1960s, Tuen Mun was identified for a new town development as part of the Government's strategy of decentralisation of urban development from the congested areas.

This major marine contract created 35 hectares of land from Castle Peak Bay for public housing, industrial buildings and community facilities.

As of 2023, the population of Tuen Mun exceeded 530,000, accounting for 7.1% of the total population in Hong Kong.

Location
Hong Kong
Client
New Territories Development Department
Years
1979-1983

1979

DISCOVERY BAY

This project was for a major private development of a complete resort on the northeastern part of Lantau Island.

The town with an eventual population of 20,000, was a development area of approximately 615 hectares including housing and commercial development sites, a ferry pier, a water supply dam and associated purification and major reticulation mains, reclamation works, road-works, a golf course, a marina and a beach.

19
79



“This landmark project established Leighton Asia as the premier civil engineering contractor in Hong Kong.”

Colin Jesse, Project Director

Location
Hong Kong
Client
Hong Kong Resort Co Ltd
Years
1979-1982



“Our pioneering LRT project in Tuen Mun established Leighton Asia as an industry leader in Hong Kong, delivering lasting benefits to the community.”

Ray Brewster, Project Manager

19
85



Location
Hong Kong
Client
Kowloon Canton Railway Corporation
Years
1985-1988

LIGHT RAIL TRANSIT SYSTEM

To serve the growing population in Tuen Mun New Town, the government introduced a new type of mass transportation, Light Rail Transit System.

The project involved the design and construction for a 23 km light rail system connecting two new towns in the New Territories of Hong Kong. The system can transport 25,000 passengers per hour across multiple routes, with vehicles operating singly or in pairs.





BLACK POINT POWER STATION

Black Point is one of the world's largest gas-fired combined-cycle power stations, using ultra-low-sulphur diesel as a backup fuel source. The construction works significantly increase the plant's efficiency and support the government's carbon intensity reduction targets.

Accredited by the Hong Kong Green Building Council, the Black Point Power Station Additional Gas-Fired Generation Unit D1 – Civil Works project has been recognised for its excellence in sustainable architectural performance, including energy efficiency, use of sustainable materials, waste management, carbon emission reduction and water conservation.

Location
Hong Kong
Client
Castle Peak Power Company Limited
CLP Power Hong Kong Limited
Saipem EMC Joint Venture
Years
1993-2020

19
93





NORTH LUZON EXPRESSWAY PHASE I AND II

Leighton Asia has developed a long-term partnership with North Luzon Expressway (NLEX) Corporation through proven performance, leading to awards for several projects in both Phase I and II, including Segments 1-3, 8.1, 10 Harbour Link and 10.1 Extension (R10).

Leighton Asia successfully addressed challenges such as extended or delayed right-of-way handovers and construction on roads with active traffic by implementing strategic solutions that ensured minimal disruption.

The NLEX project shortens travel time from Manila Port to central and northern Luzon, enhances safety and contributes to the economic development of the regions it serves.

Location
Philippines
Client
NLEX Corporation
Years
1998-2021





AUSTRALIAN INTERNATIONAL SCHOOL

The Australian International School Foundation Limited was granted a parcel of land of approximately 6,000 m² in Kowloon Tong to meet the growing demand for an Australian educational institution in Hong Kong.

The project involved the design and construction of a 10-storey building, with various facilities including an associated grass football pitch and an auditorium.

20
00



Location
Hong Kong
Client
The Australian International School Foundation Limited

Years
2000-2001
Award
The Hong Kong Institute of Architects Medal of the Year 2001

20
01

PHILIP MORRIS GREENFIELD FACTORY

The project involved the construction of buildings and related services for a new cigarette manufacturing plant on a 25 hectares lot within the First Philippine Industrial Park in Tanauan, Batangas Province.

The plant and its facilities cover a total floor area of 56,000 m² and can produce 30 billion cigarettes annually using the latest technology of the time.

The project was well-recognised for its exceptional safety performance and achievements in manhours without lost time injury.

Location

Philippines

Client

Philip Morris Manufacturing Inc.

Years

2001-2003

Awards

Recognition for achieving two million manhours without lost time injury in 2002 by the World Safety Organisation

Recognition for achieving one million manhours without lost time injury in 2001 by the Association of Safety Practitioners of the Philippines

CENTRAL RECLAMATION PHASE III

The works required tunnelling under an existing culvert, which was complicated by a high-water table and numerous services in the area. This approach enabled future works to proceed with minimal disruption to the completed reclamation.

The project provides approximately 18 hectares of land in Central for essential transport infrastructures, including the Central - Wan Chai Bypass and a waterfront promenade. The new road helps alleviate traffic congestion in the area. The project also involved the construction of ancillary facilities such as seawalls, ferry piers and a railway overrun tunnel.

Location
Hong Kong
Client
Civil Engineering and Development Department
Years
2003-2013



20
03



KOWLOON SOUTHERN LINK KBD200 - WEST KOWLOON STATION AND TUNNELS

The Kowloon Southern Link project provided a direct rail connection for residents of New Territories Northwest and Kowloon, reducing commuting time.

The project involved the design and construction of Austin Station, twin 1 km tunnels using a tunnel boring machine (TBM) and evacuation shafts.

Constructed in a highly developed area, the project required extensive traffic management. The TBM operated through mixed ground beneath a congested shopping and tourist area.

Location
Hong Kong
Client
MTR Corporation Limited
Years
2005-2009



20
05



LAI CHI KOK DRAINAGE TUNNEL

This interception scheme aimed to reduce runoff flow downstream and alleviate flooding risks in certain areas of Kowloon.

The project involved the design and construction of two stormwater drainage tunnels totaling 3.7 km in length, each with an internal diameter of 4.9 m.

Location

Hong Kong

Client

Drainage Services Department

Years

2008-2012

20
08

PIPELINE REPLACEMENT PROJECT II

The project for the Oil and Natural Gas Corporation involved the installation of over 200 km of fixed and flexible pipelines of various diameters, located 180 km off the coast of Mumbai.



20
08

Location
India
Client
Oil & Natural Gas Corporation
Years
2008-2011
Award
Global Oil & Gas Health & Safety Summit 2011 of The Energy Exchange
• Outstanding Health & Safety Vision Award

“This landmark project of Leighton India Oil and Gas Division established our offshore expertise.”

SV Rajadhyaksha, Director BD & Strategy

IPOH TO PADANG BESAR DOUBLE TRACKING

To enable trains to travel at speeds of up to 160 km/h with enhanced safety and comfort for both passenger and freight services, the single-track rail infrastructure between Ipoh and Padang Besar was upgraded to a modern, electrified double-tracking network, adhering to the highest international construction standards.

The project involved dismantling 417 km of existing track and installing 759 km of new track, including 70 km on bridges and viaducts. The works incorporated 88,000 tonnes of rails and 1.22 million concrete sleepers.



Location
Malaysia
Client
MMC - Gamuda - Joint Venture
Years
2009-2014

20
09

SLUDGE TREATMENT FACILITY

The incineration facility was the largest of its kind ever built. The contract scope included the design, construction, operation and maintenance of the facility to receive and treat dewatered sewage sludge using fluidised bed incineration technology.

In 2016, the Sludge Treatment Facility was officially renamed as T-PARK. This facility embodies Hong Kong's commitment to the "waste-to-energy" concept and aims to shift public attitudes towards resource recovery and recycling.

Location
Hong Kong
Client
Environmental Protection Department
Years
2010-2015



20
10



NORTH LANTAU HOSPITAL

The project addresses the healthcare needs of the growing community in Tung Chung on Lantau Island, where Hong Kong's international airport and several major tourist attractions are located.

The contract included the design and construction of a seven-storey, c-shaped block atop a single-storey podium, along with various facilities such as car parking and a new road link.

Location

Hong Kong

Client

Architectural Services Department

Years

2010-2012

20
10



20
10



Location
Hong Kong
Client
Highways Department
Years
2010-2019

CENTRAL - WAN CHAI BYPASS

The Central - Wan Chai Bypass and Island Eastern Corridor Link project spans six densely populated commercial and residential districts, extending 4.7 km, with approximately 4 km of underground tunnel to alleviate congestion in the busy commercial hub. This project stands out as one of Hong Kong's most significant green urban designs, incorporating numerous unique eco-efficiency elements.





EXPRESS RAIL LINK WEST KOWLOON STATION

The West Kowloon Terminus Station, the largest civil contract awarded for the Hong Kong Section of the Guangzhou-Shenzhen-Hong Kong Express Rail Link, serves as Hong Kong's international gateway to China.

The project involved constructing a 400,000 m² underground terminus that included nine long-haul and six shuttle platforms, customs and immigration facilities, departure lounges and retail outlets on four levels.

A key feature is the dramatic roof structure above the station entrance, composed of 9,000 tonnes of steel trusses.



20
10

Location
Hong Kong
Client
MTR Corporation Limited
Years
2010-2018

ZUELLIG BUILDING

The Zuellig Building was the first high-rise office building in the Philippines to be awarded Precertification at the Platinum Level by the U.S. Green Building Council under the Leadership in Energy and Environmental Design (LEED) Core and Shell Rating System.

By following specific processes during every phase to ensure conformance to stringent LEED criteria, the project successfully combined design creativity with building performance efficiency, adhering to energy and environmental principles and features.

The project involved the construction of a green building consisting of a 33-storey office tower, a two-storey retail component with five levels of basement car parking. It covered general construction works and mechanical, electrical, plumbing and fire works.



Location

Philippines

Client

Bridgebury Realty Corp.

Years

2010-2013

Awards

U.S. Green Building Council LEED Platinum Certification

Global Best Projects Competition

• ENR 2013 Best Green Project

MIPIM Asia Award 2012

• Best Office & Business Development; People's Choice

20
10

SOUTH ISLAND LINE 903

The South Island Line is a medium-capacity railway covering approximately 7 km from Admiralty Station to South Horizons in Ap Lei Chau. The South Island Line (East) provides an alternative means of transport for the residents and visitors of the Southern District.

The works consisted of the construction of two elevated stations at Ocean Park and Wong Chuk Hang and two underground stations at Lei Tung and South Horizons.

20
11

Location
Hong Kong
Client
MTR Corporation Limited
Years
2011-2016





WAVE ONE BUILDING

The Wave One building is a mixed-use commercial development located in Sector 18, Noida, U.P., one of the most rapidly developing areas in the National Capital Region.

The 41-storey project reaches a maximum height of 165 m, and comprises high-end office spaces within two office towers, retail areas, cinemas, basement and podium car park levels, totalling approximately 240,000 m² of built-up area.



20
11

Location
India
Client
Wave Infratech Pvt. Ltd.
Years
2011-2015

“As the tallest project in Delhi NCR at the time, Wave One united a tightknit global team with extensive experience, forging strong bonds and shared accomplishment.”

Paul Bartels, Construction Manager



DONGGI-SENORO LIQUEFIED NATURAL GAS SITE PREPARATION

To develop a liquefied natural gas (LNG) facility capable of producing two million tonnes of LNG annually, the project involved the design and construction of plant site preparation and associated civil works for the Donggi Senoro LNG in Central Sulawesi.

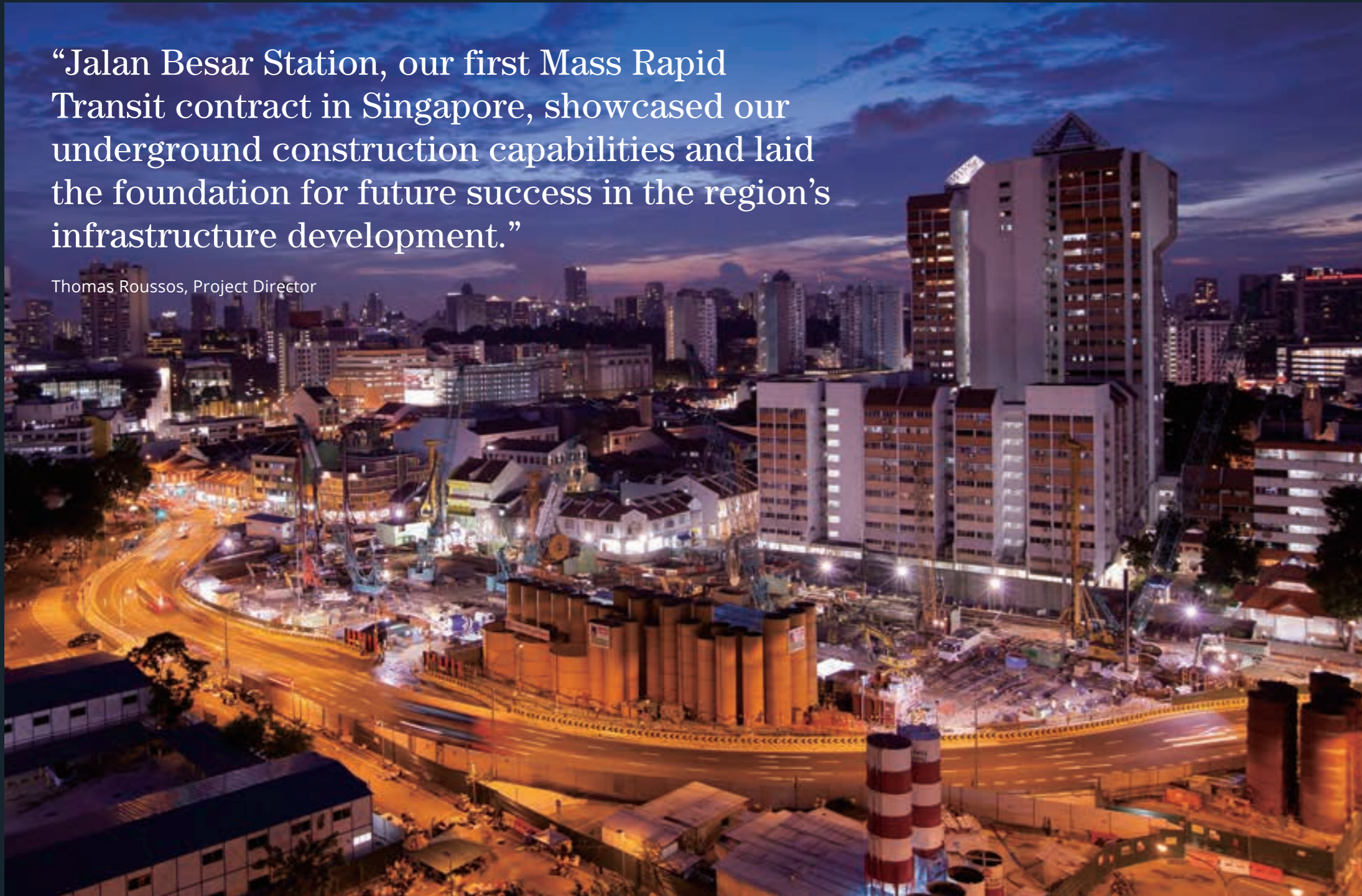
Location
Indonesia
Client
JGC Corporation
Years
2011-2012



20
11

“Jalan Besar Station, our first Mass Rapid Transit contract in Singapore, showcased our underground construction capabilities and laid the foundation for future success in the region’s infrastructure development.”

Thomas Roussos, Project Director



DOWNTOWN LINE STAGE 3 - JALAN BESAR STATION AND ASSOCIATED BORED TUNNELS

Downtown Line Stage 3 is a key component of Singapore’s 42 km Downtown Line, extending the existing Mass Rapid Transit railway network.

The contract involved top-down construction of a four-level reinforced concrete station box with a platform, mezzanine, concourse and link way.

Location
Singapore
Client
Land Transport Authority
Years
2011-2017
Awards
Land Transport Authority Construction Environmental Award 2013
Land Transport Authority Annual Safety Award 2013 and 2014
• Certification of Merit



20
11

WYNN PALACE

Wynn Palace is a luxury integrated resort in Macao. The project included ground and major foundation works, as well as the construction of a luxury hotel with 2,000 rooms and a mixed-use podium featuring gaming, dining, retail and convention facilities. Additionally, the resort includes numerous specialist attractions, such as a 30,000 m² performance lake.

Location

Macao

Client

Wynn Resort (Macao) S.A. and Palo Real Estate Development Company S.A.

Years

2012-2016

20
12

NEW AUSTRALIAN EMBASSY COMPOUND



Location

Indonesia

Client

Commonwealth of Australia –
Department of Foreign Affairs and Trade

Years

2012-2015



20
12



1500 MAN BARRACKS AT RIDGE CAMP

The project involved a 12,000 m² five-storey accommodation building for PT Freeport Indonesia at Ridge Camp.

The works included material procurement, structural steel supply and erection, civil construction, architectural installation and mechanical, electrical and plumbing works.

Location
Indonesia
Client
PT Freeport Indonesia
Years
2012-2014



20
12

“Our team overcame challenges with dedication and an innovative approach, achieving milestones in luxury residential development and ensuring the highest standards of craftsmanship and safe delivery.”

Abubakar Siddique, Construction Manager



THE CAMELLIAS

This large luxury residential project occupies a site area of approximately 18 acres. This Leadership in Energy and Environmental Design (LEED) Gold project, with a built-up area of 406,000 m², included the construction of 431 apartments and 14 penthouses. It involved the delivery of three continuous basement levels and nine tower blocks, ranging from 19 to 38 floors, reaching a maximum height of 150 m.

Location

India

Client

DLF Limited

Years

2013-2018

Award

LEED India 2011 Core and Shell Platinum

20
13

SUPREME RANTAU DEDAP GEOTHERMAL CIVIL AND INFRASTRUCTURE WORKS

The project's aim was to utilise geothermal energy in Rantau Dedap, South Sumatera Province, to generate a clean and environmentally friendly power source.

The scope of work includes upgrading and widening 14 km of existing roads, constructing 35 km of new greenfield access roads, building five well pads for drilling, supplying and installing 19 km of water/brine distribution pipeline and constructing camp accommodation for 250 staff and workers.



Location
Indonesia
Client
PT Supreme Energy Rantau Dedap
Years
2013-2014

20
13

MOTORCYCLE TYRE MANUFACTURING FACILITY

The project includes 13,000 m² of floor area within a concrete-framed mixing building and raw material warehouse, and a 35,000 m² of main factory building. Additionally, it comprises 12,000 m² of external ancillary facilities and involves 65,000 m² of external roads, car parks, pavements and landscaping.

The facilities were constructed in accordance with FM Global Standards, providing the client with comprehensive global commercial and industrial property insurance. This approach incorporated various products and designs into the construction to ensure the highest level of loss prevention against natural disasters.



Location
Indonesia
Client
PT Evoluzione Tyres Indonesia
Years
2013-2015

20
13

20
13

CITY OF DREAMS MANILA

The City of Dreams Manila is an integrated casino and entertainment complex comprising two floors of gaming, six hotel towers, retail food outlets, ballrooms, a nightclub and support facilities, all located in Manila's gaming precinct.

Leighton Asia provided construction management services, overseeing all fit-out works within the existing shell and core development by our client partner. We also acted as the Project Manager for trade contracts related to the fit-out construction works.



Location
Philippines
Client
MCE Leisure (Philippines) Corp.
Years
2013-2014



“A testament to our growing expertise in Singapore’s tunnelling sector, this project furthered our contributions to the nation’s world-class transit network.”

Ashley Mascarenhas, Project Director

20
13



SPRINGLEAF STATION AND TUNNELS FOR THOMSON-EAST COAST LINE

The project is part of the 43 km Rapid Transit System, consisting of 31 stations and seven interchange stations. It was the second tunnelling project in Singapore awarded to the joint venture.

The scope included the construction and completion of Springleaf Station, 4.4 km of twin bored tunnels, substantial earthworks with a cut-and-cover box midway along the alignment and cut-and-cover tunnels at the north end of the station, along with associated ancillary works.

Tunnel excavation was conducted using three slurry-type tunnel boring machines, with one machine being recovered and relaunched.

Location

Singapore

Client

Land Transport Authority

Years

2013-2020

Awards

Land Transport Authority – TELC1 HSE Competition Winner 2017

Workplace Safety and Health Council's Workplace Safety and Health Award

• Safety and Health Award Recognition for Projects 2015, 2016, 2017, 2019, 2020 and 2021

Land Transport Authority – Annual Safety Award

• Certificate of Participation – 2015 and 2016
• Certificate of Recognition – 2017

The Royal Society for the Prevention of Accidents – Health and Safety Awards

• Gold Award 2015, 2016, 2019, 2020 and 2021
• Silver Award 2017 and 2018



HONG KONG-ZHUHAI-MACAO BRIDGE PASSENGER CLEARANCE BUILDING

Leighton Asia, in partnership with its joint venture partner, was responsible for constructing the Passenger Clearance Building, drop-off deck, area footbridges and district cooling system for the Hong Kong-Zhuhai-Macao Bridge (HZMB). The HZMB is a 55 km link consisting of bridges and tunnels connecting Hong Kong, Macao and Zhuhai.

A key feature of the project was the offsite prefabrication conducted in a controlled factory environment in Mainland China, which enhanced safety, quality and productivity.

To complete the project efficiently and within budget, the multidisciplinary team utilised BIM technology to optimise workflows and detect potential engineering clashes.

Location

Hong Kong

Client

Highways Department

Years

2014-2018





20
15

LIANTANG/ HEUNG YUEN WAI BOUNDARY CONTROL POINT BUILDINGS

The Liantang/Heung Yuen Wai Boundary Control Point aims to redistribute cross-boundary vehicular traffic in the east, alleviating congestion at the Man Kam To and Sha Tau Kok Boundary Control Points between China and Hong Kong SAR.

The project included the construction of a main building, nine ancillary buildings and various facilities such as a public transportation interchange and a carpark. The total construction floor area for all buildings is approximately 157,400 m².

Location
Hong Kong
Client
Architectural Services Department
Years
2015-2019

TSEUNG KWAN O - LAM TIN TUNNEL

The Tseung Kwan O - Lam Tin Tunnel is designed to improve traffic conditions within the Kwun Tong District and alleviate the anticipated traffic load from future developments.

The project involved the construction of a 2.2 km dual two-lane highway tunnel, a 650 m branch tunnel, 1.6 km of viaduct using the precast segmental method. It also included the construction of two ventilation buildings, an administration building, a large landscaped deck and excavation of 1.7 million m³ of material, mostly rock, for site formation.

Location

Hong Kong

Client

Civil Engineering and Development Department

Years

2016-2023

Awards

Build4Asia 2024

- Gold Award - Outstanding Infrastructure Project, Building - Infrastructure Project

Hong Kong Green Organisation Certification

- Wastewi\$e Certificate - Good Level

Hong Kong Institution of Engineers Grand Award 2024

- Infrastructure Category Grand Prize

Benchmarking Exercise of HKCA ESG Recognition Scheme 2023

- Rising Star Award



Lam Tin Site Formation project awarded by the Hong Kong Housing Authority in 1986 for Public Housing Development

2016





TREE HARVESTING AND SITE PREPARATION FOR TANGGUH PROJECT

The project involved 185 hectares of tree harvesting and land clearing, with 3.1 million bank cubic metres (bcm) of cutting and 1.5 million bcm of earthwork fills. This was for approximately 7 km of hauling road from the bulk offloading facilities to the temporary laydown area, access road to camp facilities, and a total of 92 hectares of work platform for both permanent and temporary construction facilities.

Location
Indonesia
Client
Chiyoda, Saipem, Tripatra,
Suluh Ardhi Eng Joint Operation
Years
2016-2024

20
16





HONG KONG INTERNATIONAL AIRPORT TERMINAL 1 ANNEX BUILDING AND CAR PARK 4 EXPANSION

The enhancement projects for Terminal 1 (T1) increased the airport's handling capacity, providing a more spacious terminal and additional parking spaces. The expansion includes a seven-storey annex to the existing T1, adding check-in facilities, reclaim carousels, baggage handling systems and retail spaces.

Our work also included expanding Car Park 4 with a new 11-storey building featuring parking spaces, retail and entertainment facilities on the top floors. This structure is connected to the T1 Annex via a link bridge.

Location
Hong Kong
Client
Airport Authority Hong Kong
Years
2017-2019

20
17



“The East Kowloon Cultural Centre is a dynamic hub for arts and community events, pioneering technology with live-streamed holograms and immersive experiences in performances.”

Hercules Tsoi, Project Director



Location

Hong Kong

Client

Architectural Services Department

Years

2017-2024

Awards

Build4Asia Awards 2024

- Merit, Excellence in Façades, Building – Architecture

Hong Kong Green Organisation Certification

- Wastewi\$e Certificate - Good Level

The 22nd Hong Kong Occupational Safety and Health Award

- Outstanding Award in Safety Performance Award

Construction Industry Quality Awards 2023

- Silver Award

Construction Industry Safety Award Scheme 2022/2023

- Meritorious Prize in Building Sites (Public Sector)
- Meritorious Prize in the Safety Teams Category

EAST KOWLOON CULTURAL CENTRE

The East Kowloon Cultural Centre is a landmark designed to meet the needs of the East Kowloon communities and the arts and cultural sector, providing a performing arts venue with multi-purpose facilities.

The project involved constructing a three-storey building that included three studios with capacities ranging from 120 to 250 seats, a 1,200-seat auditorium, a 550-seat theatre with an under-stage area, semi-basement plant rooms and other ancillary facilities.

20
17

“Our team proudly delivered IKEA’s first mission-critical flagship store in India on time, maintaining the highest quality standards.”

Arun Kallekkad, Project Manager



IKEA RETAIL OUTLET

Leighton Asia constructed India's first IKEA flagship store, with a gross built-up area of 94,334 m² in Hyderabad.

The building comprises five floors, including two basements for parking, three levels for a market hall, warehouse and showroom, as well as one of IKEA's largest restaurants globally, with a 1,000-seat capacity.

Location
India
Client
IKEA India Pvt. Ltd.
Years
2017-2018

20
17

20
17

CORROSION PROJECT AND GUARDING INSTALLATION AT MILL AREA

Located at MP74, and at approximately 3,000 m, the mill area is a critical facility supporting PT Freeport Indonesia's production.

The project involves refurbishment works including replacing the platform at concentrator 3, constructing machine guarding, replanting and coating the tower mill column, and inspecting and replacing corroded steel during shutdowns.

Location
Indonesia
Client
PT Freeport Indonesia
Years
2017-2025





Location
Singapore

Client
Public Utilities Board

Years
2017-2024

Awards
Workplace Safety and Health Council's Workplace Safety and Health Awards

- Safety and Health Award Recognition for Projects 2019, 2020, 2021 and 2022

The Royal Society for the Prevention of Accidents Health & Safety Awards

- Gold Medal Award 2019, 2020, 2021, 2022 and 2023

Public Utilities Board, Singapore's National Water Agency

- Project Safety Recognition Award 2019 and 2020
- Certification of Participation for Safety Skit Presentation 2019
- Certification of Participation in Target Zero Falls Safety Campaign 2019

SEWER TUNNELS FOR THE DEEP TUNNEL SEWERAGE SYSTEM PHASE 2

The Deep Tunnel Sewerage System uses large, deep tunnels to transport used water to centralised reclamation plants for further treatment.

The project involves the design and construction of approximately 7.9 km of used water tunnels, each with an internal diameter of six metres, along with shafts, hydraulic structures and related facilities. Tunnel excavation was conducted using tunnel boring machines.

“This project underscores our contribution to Singapore’s sustainable future by optimising used water transportation and treatment.”

Ashley Mascarenhas, Project Director

20
17



CAVITE LAGUNA EXPRESSWAY CAVITE SECTION

Located in Cavite and Laguna, the expressway will seamlessly connect Metro Manila and these provinces, reducing travel times by approximately 45 minutes. It addresses transportation infrastructure needs and lays the foundation for future planned projects in the area.

The project involves the construction of a 28 km four-lane expressway with 33 bridges, four interchanges, four toll plazas and other related works.

Our project team successfully achieved a milestone of one million manhours without lost time injury in 2022.

Location
Philippines
Client
MPCALA Holdings Inc.
Years
2018-2025

20
18

NORTH-SOUTH CORRIDOR

The North-South Corridor (NSC) is a multi-modal transportation corridor designed to improve connectivity from the northern region to the city, serving towns such as Sembawang, Yishun, Ang Mo Kio, Toa Payoh, Novena and Rochor. It aims to ease traffic along Singapore’s north-south transportation axis and support new developments along the corridor.

This project includes the design, construction and completion of an approximately 640 m of twin, three-lane vehicular tunnels, underpinning an existing expressway flyover, a new facility building, and entrance and exit ramps.

Our outstanding health and safety performance on this project has been recognised with significant industry awards, reflecting our commitment to health, safety and high-quality project delivery.

Location

Singapore

Client

Land Transport Authority

Years

2018-2027

Awards

Workplace Safety and Health Council's Workplace Safety and Health Awards

- Safety and Health Award Recognition for Projects 2020, 2021, 2022 and 2023

The Royal Society for the Prevention of Accidents Health & Safety Awards

- Gold Award 2021, 2022 and 2023

The Royal Society for the Prevention of Accidents Health & Safety Awards

- Silver Award 2020

Land Transport Authority – Annual Safety Award Convention

- Excellence Award 2022



“Delivering part of Singapore’s first integrated transport corridor, this project enhances connectivity, eases traffic and increases community street space.”

Thomas Roussos, Project Director





20
21



BOARDWALK UNDERNEATH ISLAND EASTERN CORRIDOR

The Boardwalk enhances connectivity along the North Point harbourfront, providing more space for the local community, pedestrians and cyclists to enjoy the stunning view of Victoria Harbour.

The project involves constructing a 2.2 km, 57-span composite deck pedestrian boardwalk with associated activity spaces and facilities, revitalising existing facilities and three movable link bridges.

Location

Hong Kong

Client

Civil Engineering and Development Department

Years

2021-2025

Awards

Build4Asia Awards 2024

- Gold, Lighthouse Club Excellence in Health & Safety Award, Building

Construction Industry Safety Award Scheme 2023/2024

- Most Active Participating Construction Sites Award (Civil Engineering Sites Category) – Champion
- Construction Sites Award (Civil Engineering Sites Category) – Bronze
- Safety Team (Civil Engineering Sites Category) – Bronze
- Construction Sites Award (Civil Engineering Sites-Subcontractors Category) – Bronze

The 29th Considerate Contractors Site Award Scheme – Considerate Contractors Site Awards

- Public Works (New Works) – Merit
- Outstanding Environmental Management and Performance Award (Public Works) – Merit
- Innovation Award for Safety and Environmental Excellence Public Works (New Works) – Silver

Innovation Award for Site Safety at CEDD Construction Site Safety Award

- Merit Award

PHOENIX EQUINOX

Located in the special economic zone of Hitech City, Hyderabad, this high-quality commercial project spans 2.63 hectares with a total built-up area of 313,100 m². The project features three common basements and four composite structural steel towers.

Phoenix Equinox is an Indian Green Building Council Platinum-rated commercial complex and is the second building project awarded to Leighton Asia by the Phoenix Group.



20
21

“Achieving IGBC Platinum standards, these buildings exemplify top-tier green building practices and underscore the importance of ESG initiatives.”

Raju Boddu, Project Manager

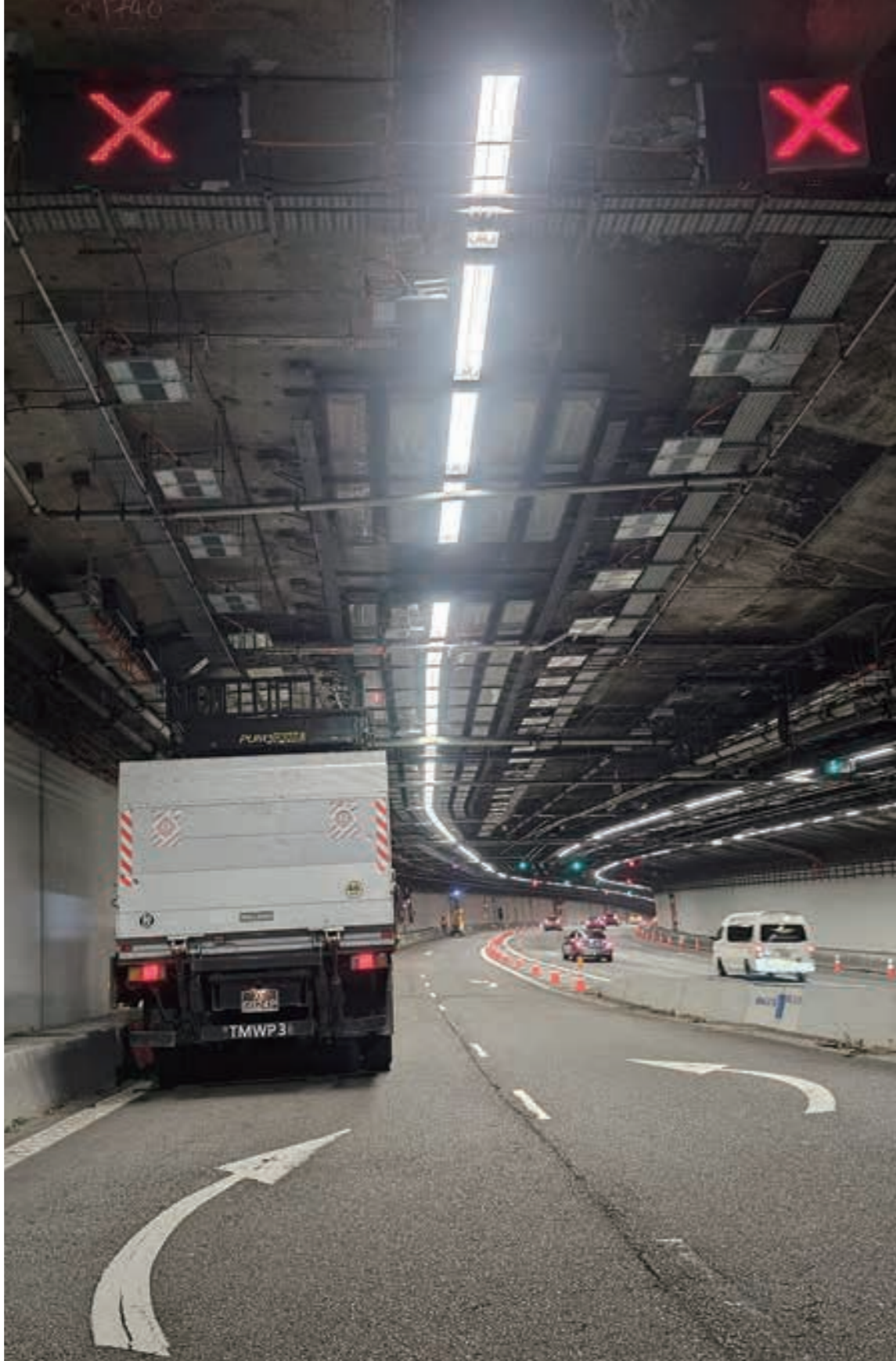
Location
India
Client
Phoenix IT City Pvt. Ltd.
Years
2021-2024

ELECTRICAL SERVICES FOR CENTRAL EXPRESSWAY AND FORT CANNING TUNNEL

Part of the Land Transport Authority's road asset replacement and infrastructure upgrade project, this initiative ensures safe, reliable, and efficient operations upon completion.

The project includes designing and replacing all major electrical equipment, as well as testing and commissioning at the Fort Canning Tunnel, Kampong Java Tunnel, Chin Swee Tunnel and associated facility buildings.

Location
Singapore
Client
Land Transport Authority
Years
2021-2024



“Our team proudly delivers Singapore’s first tunnel LED replacement project, enhancing safety and efficiency across key tunnels.”

Sivagurunathan Vaithianathan, Project Manager

20
21

BIRLA NIYAARA

Located in the heart of Worli, South Mumbai, Birla Niyaara is one of the city's tallest developments and the only residential project in Mumbai to receive a LEED Platinum pre-certification, emphasising its commitment to sustainability and energy efficiency.

Developed by Birla Estates, a real estate venture of the renowned Aditya Birla Group, the project scope includes structural and civil works for the delivery of a 70-storey and a 72-storey residential building, comprising three common basements, a podium, a terrace, a clubhouse and a retail section.

Location
India
Client
Century Estates
Years
2022-2027



“It is Mumbai’s only LEED Platinum pre-certified residential project, and sets a benchmark in sustainability, safety and construction excellence.”

Suresh Kumar, Project Manager

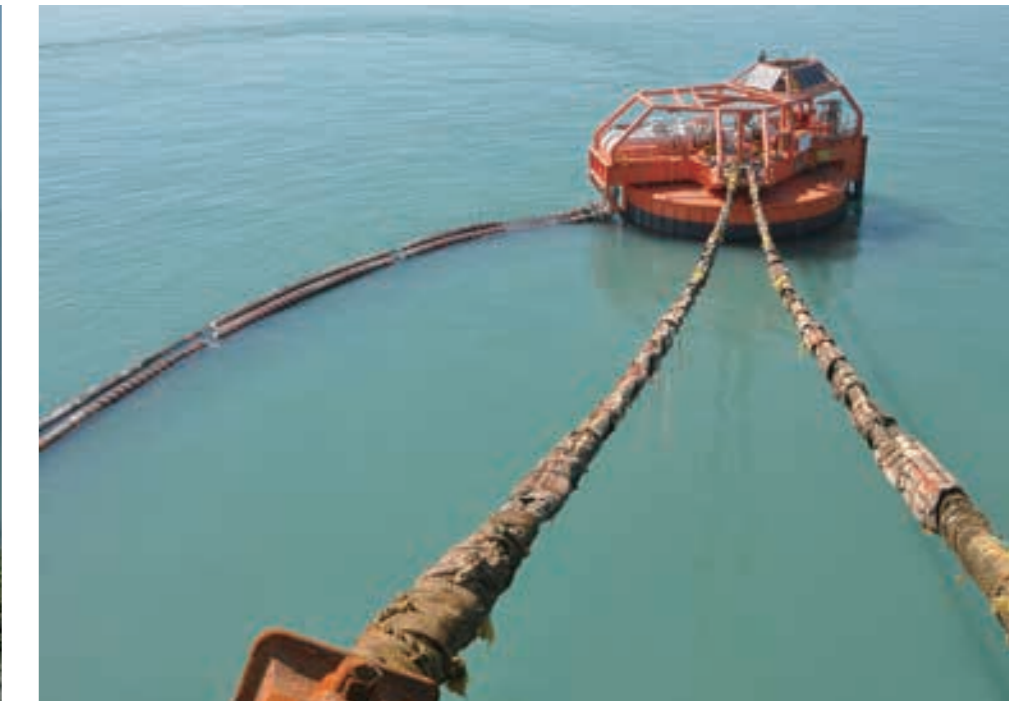
20
22

TWO SINGLE POINT MOORING SYSTEMS

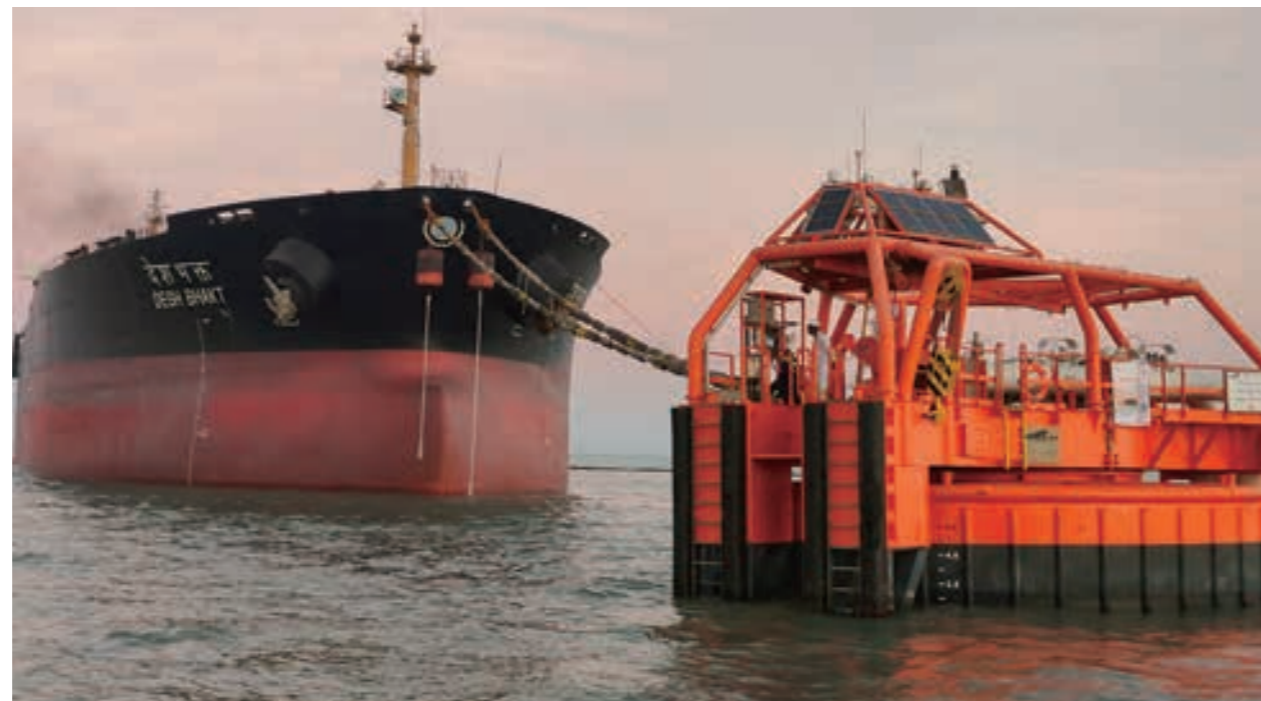
The Indian Oil Corporation Limited undertook a project to install two single point mooring (SPM) systems. An SPM system is a floating buoy anchored offshore, designed to facilitate the transfer of liquid cargo in areas where a dedicated onshore facility for loading and unloading is not available.

This project involved the installation of a 42-inch diameter submarine pipeline spanning 17 km, along with onshore pipeline and hook-up works with existing facilities. It also included the pre-commissioning and commissioning of new SPM systems, as well as the decommissioning and abandonment of existing SPMs and pipeline systems.

Location
India
Client
Indian Oil Corporation Ltd.
Years
2022-2024



20
22



“This project redefined our capabilities in the oil and gas sector, showcasing expertise in greenfield and brownfield SPM execution.”

Sandesh Raich, Project Manager

AGA HALL ESTATE REDEVELOPMENT

Located in Mazgaon, Mumbai, the Aga Hall Estate redevelopment project spans a built-up area of approximately 153,700 m². It aims to enhance the quality of life and uplift the area's environment and ambience.

The project involves the construction of two residential high-rise towers, 45-storey and 56-storey, with heights of 202 m and 231 m respectively.

With an IGBC Platinum Rating and a Preliminary EDGE Advanced Certificate target, the design features eco-friendly materials, increased water and energy efficiency, waste and emissions reduction and improved indoor environmental quality, while maintaining a strong historical connection with the surroundings.



“Despite numerous hurdles and complex design requirements, our team’s dedication and innovative solutions are transforming Aga Hall Estate into a modern residential landmark in Mazgaon.”

Abubakar Siddique, Project Manager



Location
India
Client
Prince Aly Khan Hospital Trust
Years
2023-2026

20
23

ELAN THE PRESIDENTIAL

This luxury residential project in Gurgaon, India, comprises 728 apartments, making it Leighton Asia's largest residential project. The initial phase included civil and structural works, featuring a built-up area of over 487,000 m², eight towers and three-level common basements. Each 32-storey tower will reach a height of 116 m.

The project is certified as an Indian Green Building Council Pre-Certified Gold-rated building, reflecting the commitment to sustainability and environmentally responsible construction practices.

“We are proudly delivering the Presidential, which is Leighton Asia’s largest residential project to date.”

Rana Singh, Project Manager



Location
India
Client
Elan Avenues Limited
Years
2023-2027



20
23

CANDABA 3RD VIADUCT PROJECT

Leighton Asia is designing and constructing the third bridge of the Candaba Viaduct in the north of Manila for NLEX Corporation, utilising green and sustainable engineering practices. This project marks a three-decade partnership between Leighton Asia and NLEX Corporation.

This project involves detailed engineering and construction of a new bridge between two existing viaducts, widening the Candaba Viaduct to three lanes with inner and outer shoulders in each direction. This enhancement improves motorist safety and boosts trade and commerce in Central Luzon by increasing road capacity.

The Candaba 3rd Viaduct team achieved a significant safety milestone with one million safe manhours.



Location
Philippines
Client
NLEX Corporation
Years
2023-2024



20
23



NORTH SOUTH COMMUTER RAILWAY – SOUTH COMMUTER RAILWAY PROJECT CP S-03A AND CP S-03B

Leighton Asia is delivering Contract Packages (CP) S-03A and CP S-03B as part of the North South Commuter Railway (NSCR) – South Commuter Railway Project (SCRP).

Spanning 55.6 km, the SCRCP will ease road congestion by connecting Manila to Laguna through 18 stations, playing a key role in the economic and urban growth of the Greater Capital Region.

The entire NSCR Project stretches over 147.26 km with 35 stations and is set to cater to around 800,000 passengers daily, reducing travel time from Clark Airport in Pampanga to Calamba, Laguna to less than two hours.



Location
Philippines
Client
Philippines Department of Transportation
Years
2023-2029

20
23

INNOVATING FOR THE FUTURE

DATA CENTRES

Leighton Asia is a leading provider of data centres, recognised for meeting stringent security requirements and compliance standards. Our expanding portfolio includes data centres in Hong Kong, Macao, India, Indonesia, Malaysia, the Philippines and Singapore.

Hong Kong, China 2 Projects

Macao, China 1 Project

India 2 Projects

Indonesia 2 Projects

Malaysia 5 Projects

Philippines 1 Project

Singapore 1 Project

PHASE 1 OF THE STT FAIRVIEW DATA CENTRE

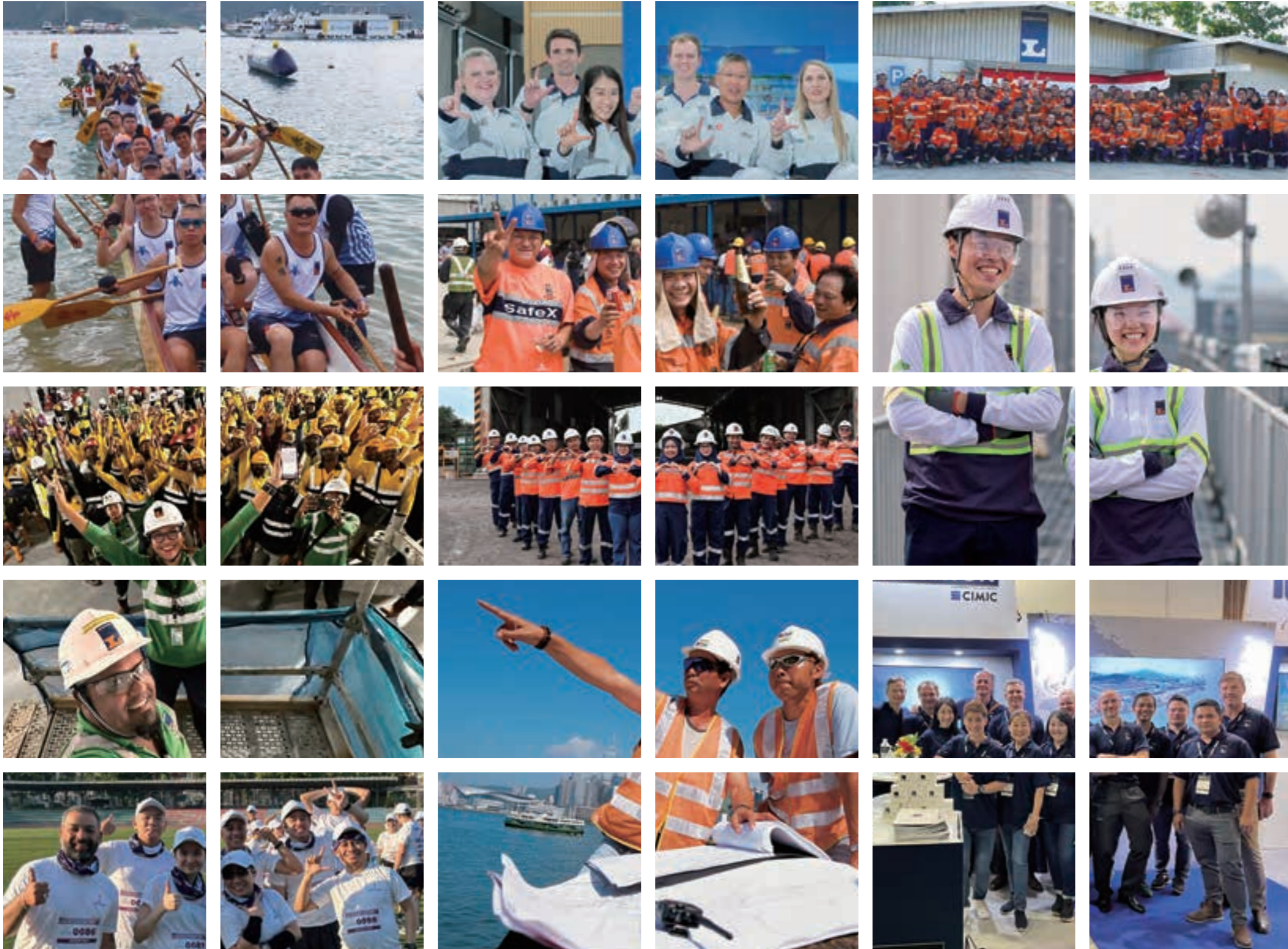
STT Fairview is the largest and most interconnected carrier-neutral data centre in the Philippines, operated by ST Telemedia Global Data Centre Philippines.

Strategically located with access to major transportation networks and utilities, the data centre will have a total IT load capacity of 124 MW.

Location
Philippines
Client
STT GDC Philippines
Years
2023-2025



20
23



TOGETHER AS ONE LEIGHTON ASIA TEAM

At Leighton Asia, our people are at the heart of everything we do. Their passion and expertise drive our success. We nurture emerging talent, paving the way for future leaders and cultivate an inclusive workplace where everyone belongs. Together, we celebrate our journey, embracing each milestone with pride and a commitment to excellence, safety and a brighter future.

06

OUR TALENT



Hong Kong, China

39/F, Sun Hung Kai Centre
30 Harbour Road, Wanchai
t: +852 3973 1111

Singapore

73 Science Park Drive
#03-14/15 Cintech I
Singapore Science Park 1, 118254
t: +65 6229 5300

New Delhi, India

AIHP Skyline
3rd Floor, Institutional Plot No. 97 A
Sector 32, Gurugram 122001
Haryana
t: +91 12 4495 8200

Mumbai, India

6/F, Tower 3
Equinox Business Park
(Peninsula Techno Park)
Off Bandra Kurla Complex
LBS Marg, Kurla (West)
400070 Mumbai
t: +91 22 6719 0000

Malaysia

Suite 8.1 Level 8
Menara Tokio Marine Life
189 Jalan Tun Razak
50400 Kuala Lumpur
t: +60 3 2858 1500

VIETNAM

60 Nguyen Dinh Chieu Street
District 1, Ho Chi Minh City

Philippines

4/F Southgate Tower,
2285 Chino Roces cor EDSA,
Magallanes, Makati City,
1232 Philippines
t: +63 2 866 6400

Indonesia

5/F Tower A
Beltway Office Park
Jl. Ampera Raya No. 9-10
Jakarta 12550
t: +62 21 3000 2323

THAILAND

SPC Building 1 Soi Chaemchan
Sukhumvit 55, Bangkok



LEIGHTONASIA.COM



50 year
journey
in Asia

