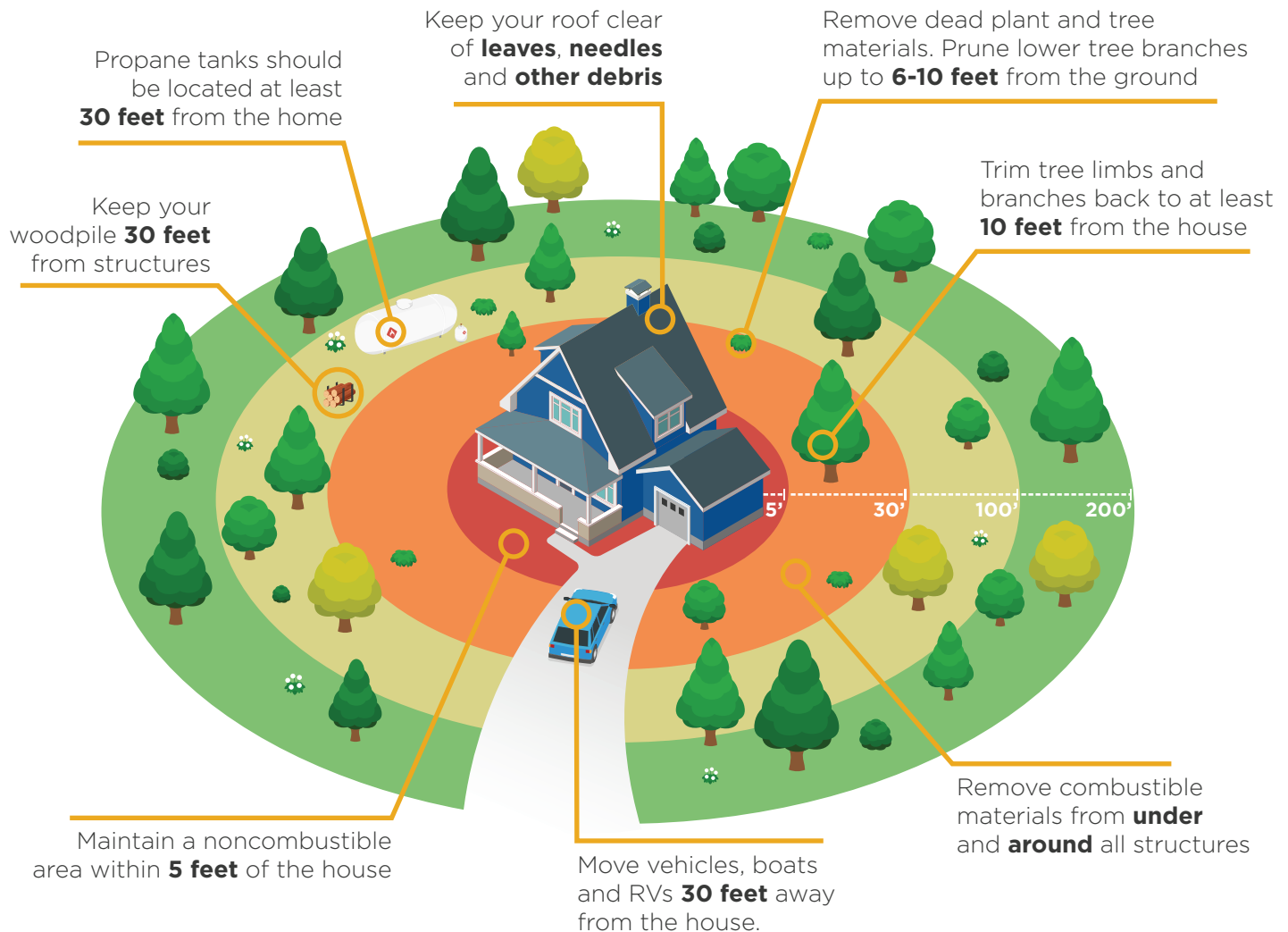


DEFENSIBLE SPACE CAN MAKE THE DIFFERENCE IN A WILDFIRE

Creating a defensible space around your home could make a major difference in whether or not your structure survives a wildfire.

Defensible space can help slow or stop the spread of wildfire and is crucial for the safety of firefighters who may be defending your property.



Contact your local independent agent for questions about your insurance coverage.

Companion piece: Adv. 1460 – Wildfire Mitigation Checklist

This is not a policy. For a complete statement of the coverages and exclusions, please see the policy contract. Products are not available in all states. "The Cincinnati Insurance Companies", "Cincinnati Insurance" and "Cincinnati" refer to member companies of the insurer group providing property and casualty coverages through The Cincinnati Insurance Company or one of its wholly owned subsidiaries – The Cincinnati Indemnity Company or The Cincinnati Casualty Company. Each insurer has sole financial responsibility for its own products. Not all subsidiaries operate in all states. Do not reproduce or post online, in whole or in part, without written permission. © 2025 The Cincinnati Insurance Company. 6200 S. Gilmore Road, Fairfield, OH 45014-5141. Mailing address: P.O. Box 145496, Cincinnati, OH 45250-5496.

This loss control information is advisory only. Contact your local, independent insurance agent for coverage advice and policy service. © Copyright 2024 The Cincinnati Insurance Companies. All rights reserved.

