

FY20 Annual Report

OFFICE OF MEDICAL EDUCATION



Annual Report

MEET THE TEAM

.....

FEDERAL GME REVENUE

.....

PROGRAMS IN DETAIL

.....

Children's National

Office of Medical Education

Children's National's educational mission is to support the highest standard of excellence in caring for children by preparing pediatric caregivers, both within and beyond our walls, to practice outstanding pediatric medicine in the 21st century.

Children's National offers graduate medical education in the form of general pediatric residency training and fellowships in a variety of pediatric specialties. Our training is supported by a committed group of faculty educators and cutting edge research.

Children's National is the core clerkship site for medical students at the George Washington University School of Medicine and Howard University College of Medicine.

Meet The Team

OFFICE OF MEDICAL EDUCATION

Undergraduate Medical Education

Director
Craig DeWolfe, MD, MEd

Associate Director
Gabrina Dixon, MD, MEd

Associate Clerkship Director
Clarissa Dudley, MD, MPH

Associate Clerkship Director
Jeremy Kern, MD

Program Coordinator
Wilhelmina Bradford

Program Associate
Olivia Winant

e-Learning

Software Engineer
Kurt Sidenstick

Graphic Designer
Holly Bloom

Instructional Designer
Melissa Madden

CAPE

Director
Priti Bhansali, MD, MEd

Education Consultant
Ellen Goldman, MBA, EdD

Research Coordinator
Isabella Greenberg, MPH

Pediatric Residency Program

Program Director
Aisha Barber, MD

Chair, Intern Selection
Caleb Ward, MD

Director, Diversity and Inclusion
Enrique Escalante, MD, MS

Associate Director
Sandra Cuzzi, MD

Associate Director
Jeremy Kern, MD

Associate Director
Cara Lichtenstein, MD, MPH

Associate Director
Edward Sepe, MD, MS

Assistant Director
An Massaro, MD

Assistant Director
Lanre Falusi, MD

Chief Residents
Emily Atwood, MD
Lexi Crawford, MD
David Liddle, MD
Margarita Ramos, MD, MS

Administrator Coordinator
Lisa Mercado-Foster

Program Associate
Kenya Spencer

Chief Academic Officer
Mark Batshaw, MD

Chair, Department of Pediatrics
Stephen Teach, MD, MPH

Vice Chair for Medical Education
Dewesh Agrawal, MD

Graduate Medical Education

Director
Joyce Campbell, BSN, MS

Program Lead
Chelsea Dobson, MSHAL

Program Lead
Channell Freeman

Program Lead
Shari Goldston, MBA

Program Coordinator
Atoya Saturria-Feliz, MSHPM

Program Coordinator
Caroline Johnson

Program Coordinator
Jennifer Pomicter

Program Coordinator
Kelly Perry

Program Coordinator
Lauren Kasperski

Program Coordinator
Tiffanie Tate

Quality & Safety Academy

Director
Asha Payne, MD

Research Coordinator
Isabella Greenberg, MPH

FEDERAL GME REVENUE



OVERVIEW

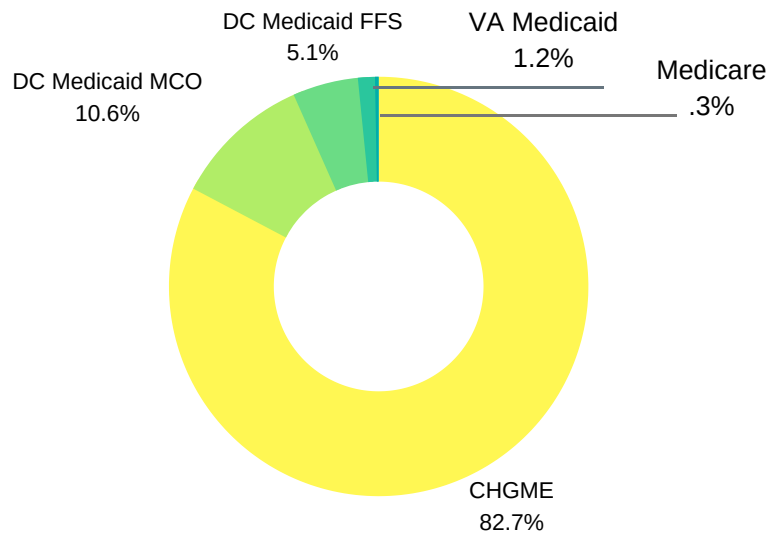
Physicians spend approximately three to seven years in Graduate Medical Education (GME) training at teaching hospitals and their associated ambulatory settings.

Through the Children's Hospitals Graduate Medical Education Payment Program (CHGME), HRSA commits to paying hospitals for the costs of training physicians and provides special payments associated with Direct Medical Education (DME).

DME funding covers costs associated with stipends for resident and fellow salaries and stipends, faculty salaries, and overhead.

Fiscal Year Comparison

- **FY19: \$16,435,588**
- **FY20: \$17,073,535**



\$14,124,330

CHGME

\$1,815,028

DC Medicaid MCO

863,175

DC Medicaid FFS

\$223,667

VA Medicaid

\$47,335

Medicare

CHGME supports the training of nearly half (**43%**) of all general pediatrics residents and over half (**55%**) of all pediatric subspecialty residents and fellows annually in the U.S.

PEDIATRIC RESIDENCY PROGRAM

Overview

Children's National provides a world-class training experience for pediatric residents, teaching how to improve child health through clinical care, education, advocacy and research.

TRAINEE BREAKDOWN

PGY 1 (41)

PGY 2 (40)

PGY 3 (36)



new record

34%

Matched CN interns self-identify with backgrounds underrepresented in medicine (UIM)

13%

US Pediatric Residents self-identify as URM

RESIDENCY TRACKS

Categorical: 68 residents

LAUnCH: 24 residents

Leadership in Advocacy, Under-resourced Communities and Health Equity

Primary Care: 16 residents

Child Neurology: 5 residents

Research: 2 residents

Genetics: 2 residents

2020 Highlight

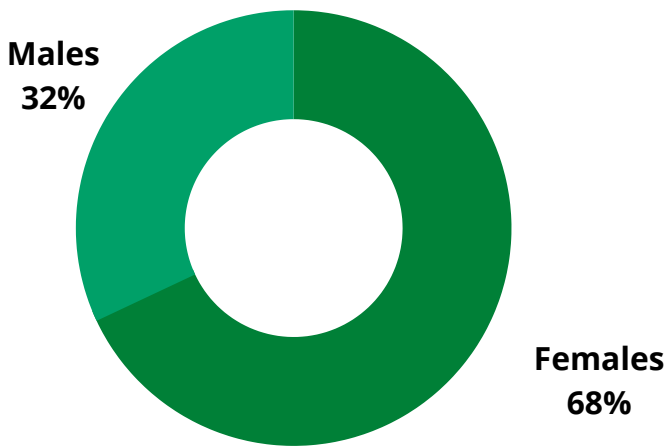
CNH Pediatric Residency founded its Building Equity Initiative

This initiative provides an opportunity for pediatric residents to implement efforts to ensure that the residency program is based on a culture of diversity and inclusion, and where residents have a platform to drive equitable outcomes for the children they care for.

Fellowship & Residency Program Data

FELLOWSHIP PROGRAMS

ACGME (134)
NON-ACGME (20)



12%

Fellows Self-Identified as Underrepresented in Medicine

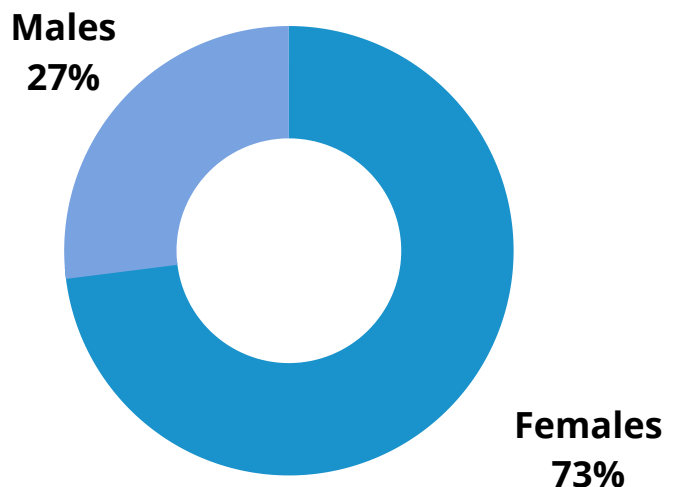
Children's National offers high quality medical education and experience complementing our commitment to excellence.

We offer fellows and residents unparalleled opportunities to practice medicine in both urban and community settings to care for a diverse population of patients and families, to participate in novel research experiences, and to advocate for children's health on a national level.

Children's has received national GME Accreditation from the Accredited Council for Graduate Medical Education (ACGME).

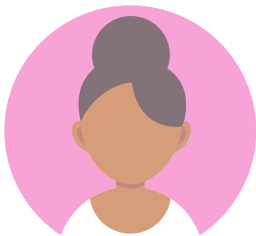
RESIDENCY PROGRAMS

PEDIATRIC RESIDENTS (117)
DENTISTRY (8)
CHILD NEUROLOGY (10)



24%

Residents Self-Identified as Underrepresented In Medicine



Rotating Resident Program

Children's National is one of the most respected and most desired pediatric training centers in the country. Our educational mission supports preparing pediatric caregivers, both within and beyond our walls, to practice outstanding pediatric medicine in the 21st century.

CN serves as the regional pediatric training hub.

FY20 ROTATOR BREAKDOWN

213

MedStar Health

133

National Capital Consortium

126

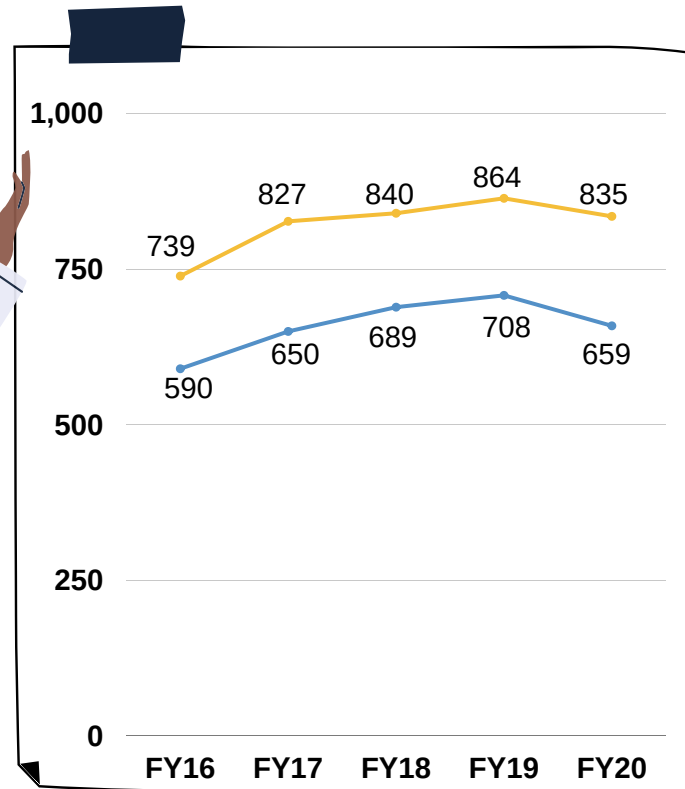
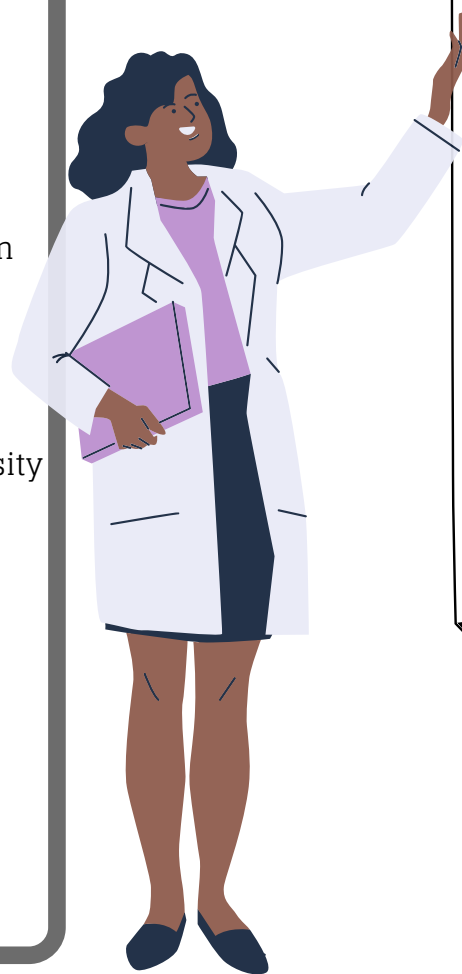
George Washington University

57

Howard University

130

Others



COMPLETED ROTATIONS

NUMBER OF ROTATORS

In keeping with guidelines from the ACGME and the Association of Pediatric Program Directors during the COVID-19 pandemic, CN stopped elective rotations starting March, 2020.

UNDERGRADUATE MEDICAL EDUCATION (UME)

Pediatric Clerkship Recognition

Medical students rated the CN Pediatric Clerkship and the Pediatric Acting Internship the highest among comparable rotations in 2019-20.

GW Overall Satisfaction Score: 2018 (4.24) 2019 (4.47) 2020 (4.58)

HU Overall Satisfaction Score: 2018 (4.4) 2019 (4.6) 2020 (4.6)

CN trains more 3rd Year Medical Students each year than Boston Children's, CHOP & Nationwide Children's

Revenue Received Supporting Medical Student Clinicals at CN

- **Howard:** \$309,000
- **GW:** \$1,716,583

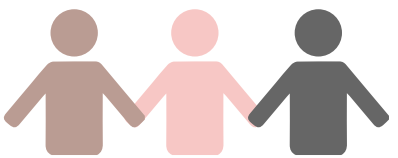


PEDIATRIC CLERKSHIP

(174) GW 3rd year
(116) HU 4th year

ELECTIVE ROTATIONS

(102) GW 3rd and 4th year
(54) Visiting Students
(33) PA Students



COVID Response: Impact on student teaching/education

- 13 new virtual conferences developed for the pediatric clerkship curriculum
- 50 total virtual conferences delivered in 6 weeks
- New telehealth outpatient clinical experience established

RESIDENCY MATCH

- 3 medical students matched for Pediatrics at Children's National**
- 5 medical students matched at US News top 3 Best Children's Hospitals**
- 29 medical students matched in Pediatrics or Related Specialty**



3 Medical Students from MSSP matched with Children's National Pediatric Residency in AY2019-2020

The Minority Senior Scholarship Program (MSSP) was established at Children's National to enhance the diversity of academic pediatricians by exposing Senior Medical Students from races and ethnicities underrepresented in medicine to academic pediatrics.

UME TEAM RECOGNITION

- Dr. Gabrina Dixon, Director of the Inpatient portion of the Howard University Pediatric Clerkship, was promoted to Associate Professor of Pediatrics.
- Olivia Winant was certified through COMSEP as a CGEA/AAMC Certified Clerkship Administrator

Hospital Grand Rounds

One way Children's National offers continuing professional education opportunities for faculty, nurses, fellows, residents, students, and other healthcare professionals is through Hospital Grand Rounds--weekly presentations on various issues in pediatric care, such as research reviews, case studies, or recent advances in treating a particular illness.

Due to the COVID-19 Pandemic, Hospital Grand Rounds went solely virtual starting March, 2020.

AVG.
Attendance →

163

Auditorium + Zoom

182

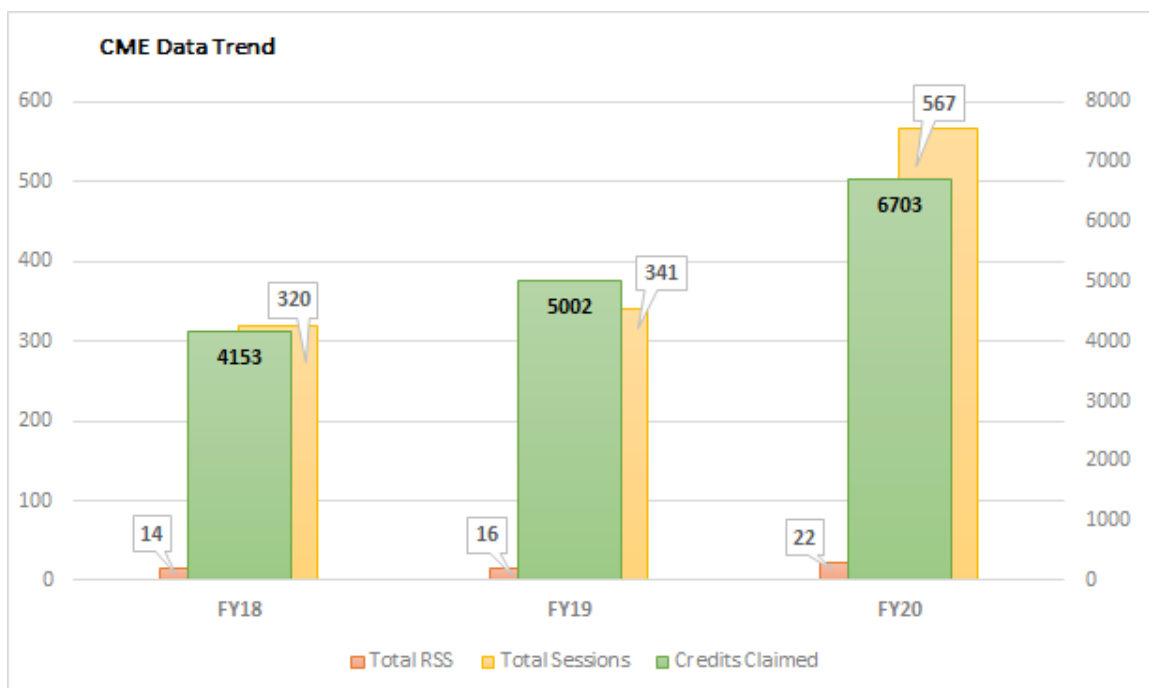
Zoom Only (March-June)

43% 

SPEAKERS WERE FEMALE

C M E

Children's National offers Continuing Medical Education events through INOVA. INOVA is accredited by the Medical Society of Virginia, which enables INOVA to provide Category 1 credit for Regular Scheduled Series (RSS) sessions offered at CN.

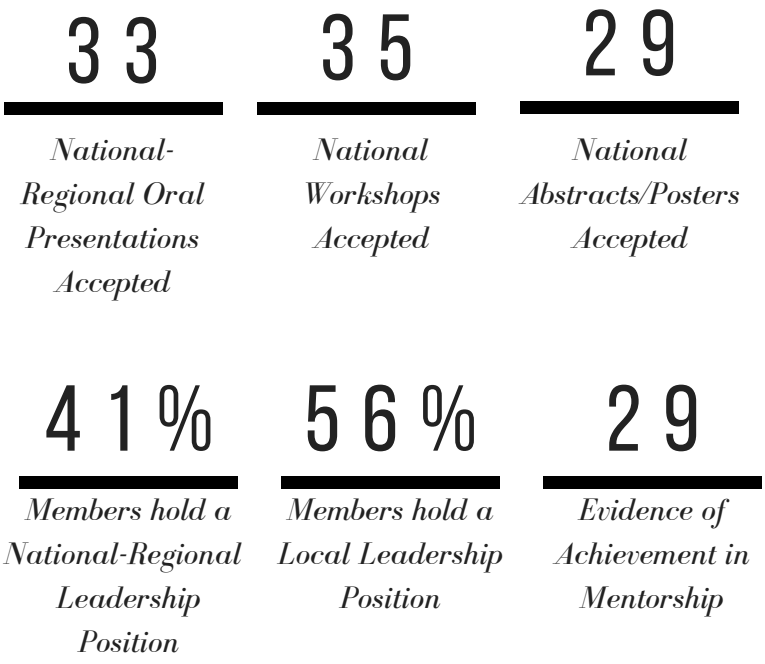


CHILDREN'S ACADEMY OF PEDIATRIC EDUCATORS (CAPE)

FY20 CONTRIBUTIONS

CAPE originated in 2010 as a continued research development support for graduates from the Master Teacher (MT) Program. CAPE recognizes excellence in educational scholarship and leadership, promotes education research, supports innovation in teaching and serves as a community of practice for health professions educators committed to providing optimal care.

27 CAPE members served in FY20 as a resource to all faculty members, trainees and allied health professionals involved in medical education at CN.



MASTER TEACHER LEADERSHIP DEVELOPMENT PROGRAM (MTLDP)

6
FY20 CN Employees Enrolled

100
Total CN Employees Enrolled since 2002

MTLDP is an educational program offered through the George Washington University School of Medicine and Graduate School of Education and Human Development.

- Focused exclusively on faculty development, the Program's tri-fold purposes are to:
- Enhance teaching skills
 - Develop education leadership potential
 - Promote scholarship in education

QUALITY AND SAFETY ACADEMY



EST. 2018-2019

vision

CN will be a leader in the safest, highest quality care for children

mission

1. Support the quality and safety goals of CN by enhancing the rigor of quality improvement and safety projects
2. Enhance the career progression of QI trained faculty and staff engaged in quality improvement
3. Improve quality improvement and safety capacity through active support of interdisciplinary QI staff and faculty

11

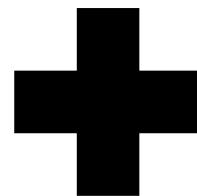
PUBLICATIONS

9

PRESENTATIONS

15

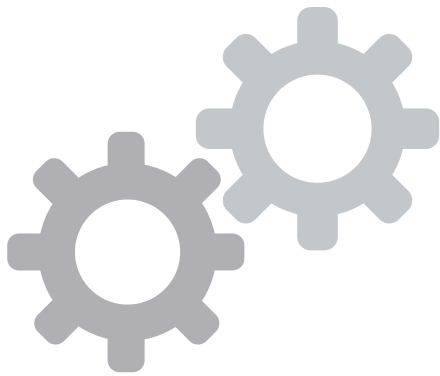
ABSTRACTS



16 Members

e-Learning

CN e-Learning team offers highly customizable learning platforms to teachers, students and life long learners designed to enhance knowledge and performance through engaging experiences. The platforms cover various medical education topics using innovative interactive tools.



AREAS OF FOCUS

- Develop E-Learning Modules
- Revise and Maintain Modules
- Develop and Maintain Portals
- Create Videos
- Create Modules for use in Cornerstone

FY20 PROJECT SPOTLIGHT

E-Learning Module

1. SPEED
2. Think Under Fire
3. Pediatric Disaster Medicine
4. Pediatric Rehabilitation
5. Trainee Education in Advocacy & Community Health

Project Lead

Dr. Randall Burd & Jean Fritzeen
Dr. Allison Jackson
Dr. Joelle Simpson & Dr. Dennis Ren
Dr. Olga Morozova
Dr. Lanre Falusi

Special Projects

1. Created a virtual platform for GME orientation
2. Developed a fellowship recruitment video
3. Assisted GME with virtual graduation