

School Partnerships

Our Vision and Team

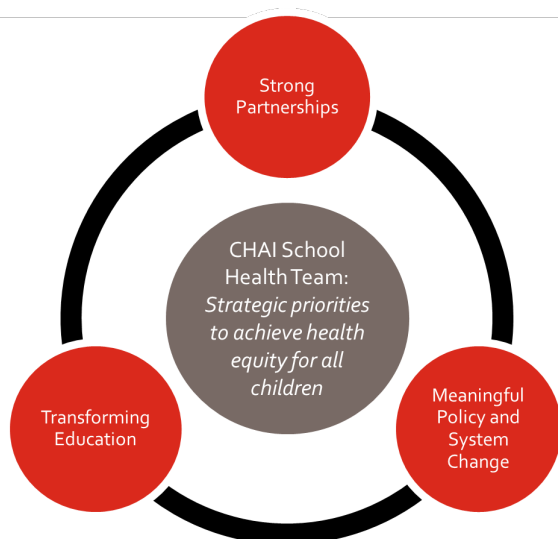
At Children's National, ***we envision a school-friendly health care system that is designed to help all children achieve optimal health and reach their full academic potential.***

Education is a critical social determinant of health.

Studies have shown that poor health can put education at risk – kids with poor health tend to have higher absenteeism rates, lower academic achievement, and can cause educational setbacks that can interfere with schooling. Conversely, education can create opportunities for better health – adults with more education tend to have better jobs, live in healthier neighborhoods, and have better access to resources that contribute to better health.¹

We can't educate children who are not healthy, and we can't keep them **healthy** if they're not educated. There has to be a marriage between health and education.

– Jocelyn Elders, M.D.
former U.S. Surgeon General



For over 10 years, our Child Health Advocacy Institute (CHAI), through leadership and collaboration, has advanced policy and systems changes to achieve health equity for children.

Our CHAI school health team provides leadership on Children's National school partnerships efforts that are driven by our Community Health Needs Assessment² and local priorities. Our

multidisciplinary team has training and expertise in community health, health care administration, pediatric medicine, and public affairs. We aim to support school wellness through coordination and partnerships between the health and education sectors through three strategic priority areas.

Our Strategic Priorities

- **Strong Partnerships** – We develop and strengthen partnerships to increase advocacy and community engagement.

¹ Why Education Matters to Health: Exploring the Causes. Virginia Commonwealth University Center on Society and Health. April 2014. <https://societyhealth.vcu.edu/media/society-health/pdf/test-folder/CSH-EHI-Issue-Brief-2.pdf>

² Community Health Needs Assessment. *Growing Up Stronger: The Impact of Neighborhood Conditions on Child Opportunity*. June 2022. www.childrensnational.org/CHAI.

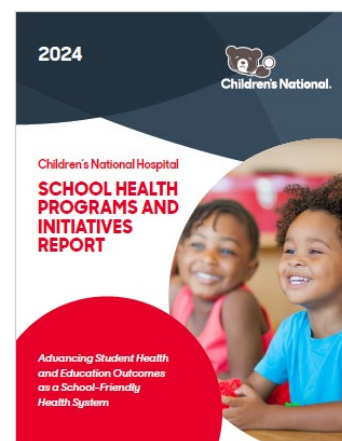


Children's National.

- **Transforming Education** – We strengthen and support the education and training of internal and external stakeholders through the development and implementation of programs and services designed to meet the needs of community.
- **Meaningful Policy and System Change** – We advance policy and system change to address the social determinants of health/community health needs.

Our Work

- Compile reports summarizing current efforts and impact of Children's National school health programs and initiatives.³
- Facilitate a School Health Advisory Committee and School Health Collaborative workgroup for leaderships and staff to learn about regional school health efforts and increase coordination of hospital-wide school-based efforts.
- Developed a School-Friendly Health Systems framework and launched a national learning collaborative to help hospitals and health systems deliver better care and patient experience that enhance a children's prospects for improved health and academic success.⁴
- Leading the [Collaborative for Attendance Resources in Education & Health \(CARE-H\) Program](#) in District of Columbia Public Schools (DCPS) to improve school attendance⁵
- Host educational and engagement events for youth, including a summer internship that address critical health needs and support career readiness.
- Convene stakeholder meetings with DCPS and school health partners.
- Monitor a regional school health policy agenda to drive policy and system changes.



What We Offer

- Facilitate dialogue between the health and education sectors to strengthen partnerships and identify policy and system change opportunities.
- Deliver interdisciplinary education to providers, trainees, school staff and students on critical education and health issues.
- Conduct school health policy and programmatic research and share success stories.
- Create opportunities for our staff to engage with schools and school-aged children through community benefit activities.



Partner with Us! Visit childrensnational.org/school-partnerships or contact schoolpartnerships@childrensnational.org

³ Children's National 2024 School Health Programs and Initiatives Report is available to download on childrensnational.org/school-partnerships

⁴ View the School-Friendly Health Systems framework at <https://childrensnational.org/school-friendly>

⁵ For more information on CARE-H Program visit: <https://dcps.dc.gov/page/chronic-absenteeism-reduction-effort-care-pilot-program>