



Children's National.

Pediatric Emergency Medicine Fellowship

FALL 2023 INTERVIEW SEASON

Children's National Hospital
WASHINGTON, DC

Table of Contents

3	Message from Directors
4	Message from Fellows
7	Diversity & Inclusion
8	Emergency Departments
10	Your Schedule
11	Block Rotations
12	Teaching
13	Simulation
14	Research
16	Administrative Work, Mentorship, Benefits
17	Graduate Programs
18	Educational Curriculum
22	Faculty Profiles
35	Fellow Profiles
39	Fellowship Publications Through 2022
48	Sample Contract



A message from your fellowship directors

Welcome to Children's National Hospital and congratulations on your excellent career choice, Pediatric Emergency Medicine. We are excited to meet you and to show you what makes our program a compelling place to train. We are a diverse group of physicians and staff who strive to provide excellent care to the diverse community of Washington, DC. We continue to live by Jim Chamberlain's words that our primary goal during the three years of fellowship is for you to have a good time and spend time with friends and family, and from there, being a good clinician and investigator will follow. This is a well-balanced program that aims to train not only the best PEM professionals in the field, but also to keep them the same fantastic people they were when we first interviewed them.



Christina and Jennifer

A message from the fellows

Welcome to your interview day in DC! We look forward to getting to know you and having you get to know us. Please take this opportunity to explore the different aspects of our fellowship and how they fit your personal style.

Some of the unique aspects of our fellowship program are:

- Our program fosters autonomy early in fellowship. You will quickly learn how to single-handedly manage a large-volume, high-acuity emergency department and trauma center.
- As the only freestanding children's hospital in town, we transport patients from at least a 500-mile radius. As a result, the range of what we see on a daily basis is sometimes unbelievable.
- The faculty treats us as full members of the department with an equal say in the everyday functioning of the ED. They are very responsive to concerns and suggestions that the fellows have regarding our program.
- Although we work hard, Children's is a fun place to work. You have a sense of working on a team toward a common goal of good care for each patient.
- Our faculty serves as great role models in all parts of our training – from the research of Monika, Jim, Stephen, Shireen and others to the advocacy and administrative work of Kathy, Joelle, Karen and Lenore, to the dedicated teaching of Dewesh, Emily, Sam and all.

Through your interview process, please feel free to contact any or all of us with any questions that may come up regarding our program, PEM fellowship, or the interviewing process in general.

Best of luck with the interview season

The Fellows





Graduation 2023



Orientation 2023



New Fellow Happy Hour 2023



Zoo Day 2023



EMS Day 2023

Diversity and Inclusion

As a fellowship program, we are committed to diversity and inclusion. This commitment grows from knowing that diversity makes us stronger, more vibrant, and more adept at delivering the best care to our families. Diversity in our workforce means that we reflect the population we serve, making us more thoughtful and effective clinicians.

At the hospital level, the Building Equity Initiative is the resident-led and faculty-advised program to promote equity. This initiative has six areas of focus: advocacy, recruitment & representation, education, research, community partnerships, wellness & inclusion. PEM fellows and faculty have been active participants in this work that includes advocacy projects, education of staff, and research on health equity. In strengthening recruitment, the large pediatrics residency has had a long-standing intentional focus on diversity, resulting in over half of the incoming intern class being under-represented in medicine. As active educators and mentors to the pediatric residents, the PEM division benefits from the continued growth in resident diversity.

At the division and fellowship level, this commitment to diversity is strong and explicit from the division chief down to each faculty member. In the clinical realm, we have a diverse workforce of nurses, techs, and physicians to provide care for our families. We assure excellent and effective clinical service to all families through the use of evidence-based care that is standardized across our Emergency Departments. In the academic realm, women faculty and faculty of color have been actively supported, resulting in many associate professorships and three women who are full professors. In the research realm, our division's research is wide-ranging, and includes special expertise in advocacy and health equity. We are a group eager to advocate for our families and have ongoing projects to improve the care of special populations.

This is a vibrant and active PEM division, committed to addressing health equity in our clinical work and to nurturing a diverse and thriving faculty and fellow group.





EMERGENCY DEPARTMENT

SHEIKH ZAYED CAMPUS

The Children's National Hospital (CNH) ED is a busy one, averaging over 125,000 visits per year. It is the only pediatric level I trauma center in the District of Columbia and one of only two for the state of Maryland (the other being Johns Hopkins). In addition to patient visits, we take referral calls from pediatricians in DC, Maryland, and Virginia, and help manage a busy ground and helicopter transport service that handles over 5,000 calls annually. We serve as the medical control for all pediatric transport calls (except for neonates).

The Emergency Department at the Sheikh Zayed campus is divided up into 2 branches – Fast Track and the main ED. Fast Track is open 24 hours daily and is staffed by pediatric associates, pediatric nurse practitioners, and physician assistants. The associates are physicians who have completed a general pediatrics residency but have not done a PEM fellowship. Many have worked for a few years as an associate and can be a great resource. There are several full-time associates who staff both the ED & Fast Track, and a pool of part-time associates & moonlighters who are only certified to work in Fast Track.

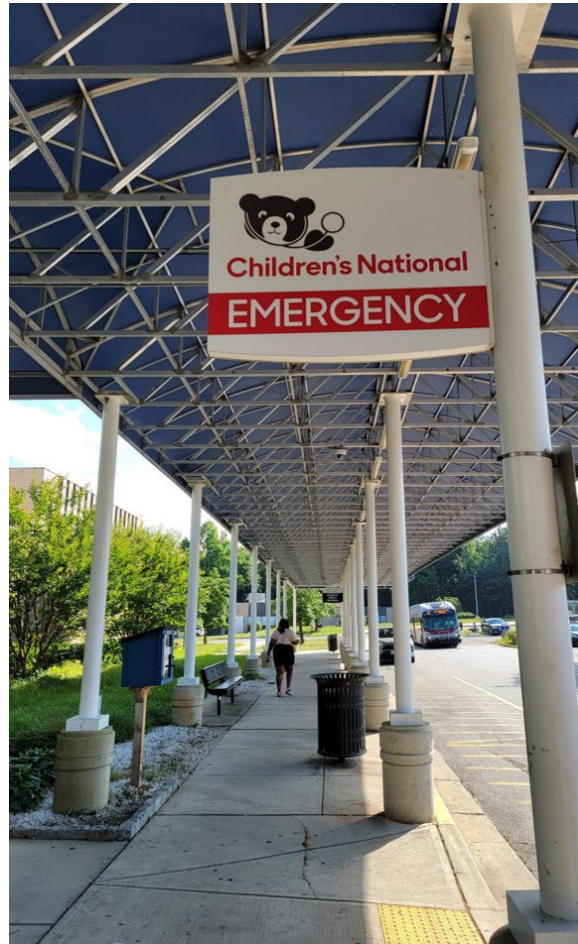
The main ED is staffed by PEM attendings, fellows, pediatric associates, pediatric nurse practitioners, physician assistants, residents and medical students. The residents come from many different backgrounds – there are pediatrics residents from Children's National and the National Capital Consortium (Walter Reed National Military). In addition, there are emergency medicine residents from George Washington University and Washington Hospital Center/Georgetown programs. Finally, there are family medicine residents from Georgetown, Howard and several other programs. There will intermittently be 3rd and 4th year medical students and visiting pediatric residents as well. (PHEW!) The fellow's role in the ED is to help precept the residents and students and to be the physician-in-charge at all traumas, code blues, and medical alerts. In addition, whenever the fellow is working, he/she has the possibility of carrying the "phone" (starting in January of 1st year) – making them the physician primarily responsible for overseeing flow in the ED and handling transport referrals and medical control through the Emergency Communications and Information Center (ECIC) via ground and air. We believe that the combination of ED flow management with the skills of evaluating patients and precepting students and residents at the same time is what makes the Children's National fellowship graduate so clinically strong – learning to run a busy ED is one of the reasons you're doing this fellowship anyway, right?

We believe that the combination of ED flow management with the skills of evaluating patients and precepting students and residents at the same time is what makes the Children's National fellowship graduate so clinically strong.

United Medical Center

Southern Avenue
Emergency Department

In September 2010, our division opened a satellite ED at United Medical Center in Southeast Washington, DC, the most underserved neighborhoods of our city. The staffing is by a PEM attending 24/7 with PA and associate/fellow coverage in addition. When you work there, a PEM attending will always be present. The address is 1310 Southern Avenue SE, Washington, DC 20032. On a typical non-pandemic year, we see 125,000 patients between the main Sheikh Zayed campus and the Southern Avenue campus at UMC combined.





Your Schedule

DUTY HOURS

Fellows work approximately 36 hours/week in the ED (either at CNH or adult ED) during clinical months (total of 15-17 shifts), and about 10 hours/week on an elective month (4-6 shifts). Shifts are a combination of: 7am-4pm, 9am-6pm, 11am-8pm, 3pm-midnight, 5pm-2am, 7pm-2am, 9pm-3am, and 11pm-8am. All these shifts will have a PEM attending on as well. Starting 2 years ago, we instituted precepted shifts for the first 4 months of fellowship to provide an opportunity for fellows to strengthen their clinical reasoning and have time to develop an understanding of our system prior to being in charge of a team. You will have a graduated increase in the types of shifts you do with overnights coming later in the 1st year.

CONFERENCES

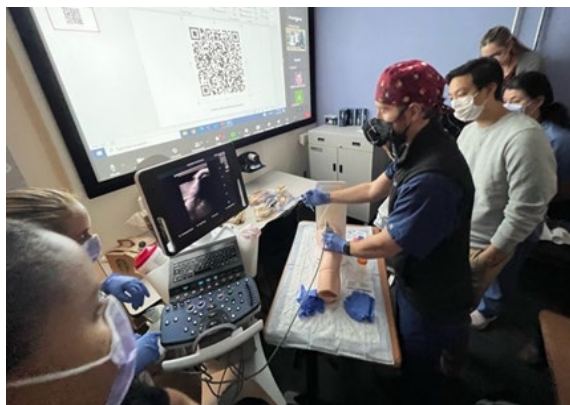
Educational conferences are held in-person every Thursday from 8am-12pm—this is required and protected for fellows. Faculty have the option to join via Zoom. One Thursday every other month begins at 7:30am in order for fellows to teach residents in a mock code format. Other learning opportunities include the Department of Pediatrics Grand Rounds on Wednesdays at 8am and the well-attended Professorial Rounds on Thursdays from 12pm – 1pm. In Professorial Rounds, an interesting case is discussed – usually a patient who presented through the ED. An attending or fellow then facilitates a vigorous multi-disciplinary discussion. Fellows are welcome to present and have taken advantage of this opportunity for a hospital-wide presentation.

MOONLIGHTING

Fellows are allowed to moonlight with the approval of the program director. There are opportunities to cover additional and unfilled shifts at the CNH ED, Fast Track and at UMC. Moonlighting can begin in Fast Track and at UMC after completing 3 months of orientation, and in the main ED after completing the 1st precepted service month.

ROTATIONS by BLOCK	Pediatric-trained Fellows
Pediatric Emergency Medicine	13 months
PICU (1 st year)	1 month
Adult EM at WHC (3 rd year)	1 month
Adult Trauma at INOVA Fairfax, VA (1 st year)	1 month
Anesthesia (1 st year)	1 month
Charge Shadow/Transport (1 st year)	½ month
Toxicology at Nation Capital PCC (3 rd year)	1 month
Wound Management/US (1 st year)	1 month
Ultrasound at CNH/GW (2 nd year)	1 month
Emergency Medical Services (3 rd year)	1 month
Child Abuse (1 st year)	1 month
Orientation (1 st year)	1 month
Injury Rotation (2 nd year)	1 month
Leadership Elective (2 nd year)	0.5 month
Research and Electives	11 months

ROTATIONS by BLOCK	Emergency Medicine-trained Fellows
Pediatric Emergency Medicine	9 months
PICU (1 st year)	1 month
NICU at GWU (1 st year)	1 month
Charge Shadow/Transport (1 st year)	0.5 month
Pediatric Hospital Medicine (2 nd year)	1 month
Pediatric Cardiology (2 nd year)	1 month
Pediatric Neurology - Consults (2 nd year)	0.5 month
Anesthesia (1 st year)	1 month
Outpatient Pediatrics (1 st /2 nd year)	1 month
Wound Management/US (1 st year)	1 month
Child Abuse (1 st year)	1 month
Orientation (1 st year)	1 month
Research	5 months



Teaching

Educational conferences are held every Thursday from 8am-12pm. In-person attendance at conference is mandatory and protected (no clinical responsibilities the evening and night before).

Within this weekly Educational Conference, we have established some curricular conferences, including ECG conference, Orthopedics conference, Radiology conference, and others. Conferences are led by PEM faculty, invited guest speakers from within CNH, as well as from around the Metropolitan area. Fellows are responsible for some conferences, such as Journal Club, EBM, and Toxicology sessions. We also have multidisciplinary joint conferences, including Emergency Medicine-Critical Care Conference, Emergency Medicine-Hospitalist Medicine Conference, and Emergency Medicine-Neurology Conference.

In addition to the weekly core educational conference, there is a curriculum for all 1st and 2nd year hospital-based fellows covering essentials related to future academic faculty skills and development, such as teaching at the bedside, feedback skills, creating an educational portfolio, financial literacy, and research skills. These quarterly full day sessions are facilitated by various faculty members and staff from throughout CNH. The hospital and university also hold seminars and workshops on grant writing, manuscript preparation, ethics of research, abstract presentation, etc.

At the end of this manual, there is a list of topics covered over the three-year fellowship to give you a glimpse of the educational content of our fellowship program.

By the end of fellowship, each fellow will have a portfolio of talks/teaching sessions that will be useful in a pinch (and be a strong aspect of your CV).

Simulation

Simulation is a crucial part of our educational curriculum. Fellows participate in “large group” simulations, which primarily focus on team dynamics and team communication with a secondary focus on medical management. These simulations occur approximately every other month. Fellows also participate in “small group” simulations (5 fellows/group), which follow a 3-year curriculum. Each fellow participates in 4 “small group” simulations per year. These simulations are focused on medical management of both common and uncommon cases. In addition, we utilize simulation to teach procedures and newborn deliveries.

There are also numerous opportunities for fellows to teach through simulation. Fellows facilitate mock codes for the residents in the ED and lead skills sessions for the residents throughout the year and during specific full-day workshops, such as Intern Resuscitation Day held each spring for rising 2nd-year residents.



Research

CURRICULUM

The PEM fellows’ research curriculum is an important part of your training. During training, you will become adept at understanding published research and at conducting your own research. The scholarly rigor and attention to logistical detail required to complete a research project will provide valuable training that will carry over into other areas of professional development. The ability to identify outcomes and measure the success of interventions is important not only for publishable research projects, but also administrative decisions, quality improvement projects, and medical education.

Importantly, this curriculum is an interactive model of training, which means that your input and participation are a must for its success and your success. You will draw the most from training through active participation and active support of your peers’ efforts.

ACTIVITIES

All fellows will complete the ABP’s requirement for a fellowship scholarly activity, with a research project that results in a publishable manuscript. The following activities are expected of all PEM fellows in the Children’s National program:

Year(s)	Mentorship
	Scholarly Oversight Committees
2, 3	November
All	May
All	Regular Meetings with primary research mentor – Starting Dec Year 1
	Education
1	Biostatistics modules online
1	Epidemiology at GWU SPHHS
1	Attend ED research seminar
All	Participation in >80% Journal Clubs
	Meetings/Presentations
1, 2	PEM Fellows’ Conference
2, 3	CNMC Research Week – Spring
2 and/or 3	Abstract Submission to Regional (AFMR) and National (PAS, SAEM) Meetings
	Publications/Projects
1 or 2	Review Article or Case Report with faculty
2	Core Curriculum Quality Improvement Project
2 and/or 3	Original Science Article

Research

OPPORTUNITIES

CNH PEM fellows are encouraged to explore other opportunities within the research curriculum, including involvement in national and regional research organizations and additional research training. First-year fellows are expected to attend the monthly research faculty meetings to learn about active research in the department and research skills such as grant writing, oral presentations, and scientific writing.

In addition to the degree programs discussed below, possible areas of involvement include the Academic Pediatric Association, the American Federation for Medical Research, and the Society for Academic Emergency Medicine.

Fellows may consider presenting these meeting throughout the year:

MEETING	ABSTRACT DUE	CONFERENCE DATE
ACEP Scientific Assembly	April	October
AAP National Conference & Exhibition	April	October
AFMR Eastern Regional Meeting	November	April
Children's National Research Week	February	April
Pediatric Academic Societies Meeting	November	May
Society for Academic Emergency Medicine	December	May

Administrative Work

Each fellow is required to become involved in some form of administrative activity, within the department or the hospital, and sometimes on the regional and national level. This may take the form of committee involvement (i.e. code blue committee or performance improvement committee) alongside a faculty member from the Division or a specific administrative project, such as developing a new clinical guideline. Think about what might interest you and ask us how you might get involved. This is definitely another time to be proactive – you’ll gain good experience by participating in some administrative aspect of how your division or hospital runs, and it will help you later on when you are a faculty member.

Mentorship

Each fellow will choose and connect with an individual clinical mentor or mentors at the beginning of fellowship. The fellow and clinical mentor(s) meet at least monthly to discuss interesting clinical situations and broader career advice. In addition, the fellow and clinical mentor discuss the development of the fellow’s individualized learning plan, and review feedback.

During the first six months of training, fellows, in consultation with the program directors, will select a research mentor. The research mentor will guide the fellow to complete at least one individual research project in the topic of his/her choosing.

Benefits

PGY 4: \$ 81,737

PGY 5: \$ 85,415

PGY 6: \$ 89,259

Each fellow is given 4 weeks of vacation time each year. Each fellow receives a \$2,500 educational stipend per year. Additional support is provided for conferences at which fellows are presenting. Each fellow has a Research Instructor appointment at George Washington University, permitting full coverage of tuition at GWU, as well as medical library online access.

Graduate Programs



All fellows are required to introductory modules in biostatistics and epidemiology, which is taken at GWU, even if not pursuing an advanced degree.

MASTERS in PUBLIC HEALTH (MPH)

As part of your research training, graduate courses in public health are available with full tuition coverage, including the full MPH program from the School of Public Health at George Washington University. There are multiple tracks including Health Policy, Epidemiology, and Maternal and Child Health. The MPH program consists of 36 hours of course work – 16 credit hours of required course work and 20 hours of specialty course work. Each track provides a coordinated curriculum that emphasizes the development and application of professional skills. All courses are scheduled to meet the programmatic needs of both full- and part-time students. More information: <https://publichealth.gwu.edu/academics/graduate/masters-programs>.

MASTERS in BUSINESS ADMINISTRATION (MBA)

The MBA program is through the School of Business at George Washington University. GRE and GMAT are not required. More information: <https://business.gwu.edu/mba>

MASTERS in HEALTH ADMINISTRATION (MHA)

Several fellows have completed the MHA program from the School of Public Health at George Washington University. More information: <http://publichealth.gwu.edu/programs/health-administration-mha>



Educational Curriculum

The curriculum is built on the core concept of longitudinal learning. This is done by creating a curricular framework to each aspect of our education. To this end, there is a curriculum for ECG learning, for Orthopedics, for Toxicology, for journal club, for ultrasound, for EMS, for disaster preparedness, for advocacy and for Radiology. There are also broad categories of learning that includes medical and surgical emergencies. The topics under these categories are taught on a rotating schedule over the 36 months of fellowship. Examples of topics are below:

MEDICAL

- Congenital heart disease
- Meningitis (viral, bacterial)
- Hepatitis
- Dehydration/electrolyte disturbances
- Hypertension
- Acute renal failure
- Cancers: presentation & initial workup
- Osteomyelitis/septic arthritis
- Pneumonia
- Sepsis/bacteremia
- Head & neck infections
- Gastroenteritis
- UTI/pyelonephritis
- Tropical Diseases
- Cardiac Infections
- Spine Emergencies
- Fever
- BRUE
- Syncope
- Abdominal Catastrophes
- Upper Airway Emergencies
- Severe Viral Exanthems
- Anaphylaxis/serum sickness
- Asthma
- Dysrhythmias
- DVT/Pulmonary Embolism
- Dermatologic emergencies
- DKA
- Adrenal Disorders / Pheo
- Thyroid disorders
- Inflammatory bowel disease
- Acute liver failure
- Anemia
- ITP & platelet disorders
- Coagulation disorders & DIC
- Metabolic disorders overview
- Seizures & status epilepticus
- Stroke
- Migraine
- Skin/Deep tissue infections
- Juvenile Idiopathic Arthritis
- Lupus
- HIV

Others: toxic shock, mono, Acute Rheumatic Fever, Hypoglycemia, Hypopituitary

Educational Curriculum continued

TRAUMA / SURGERY / RESUSCITATION / EMS / PSYCHOSOCIAL / ENVIRONMENTAL

- Trauma
- Severe Blunt head injury
- Mild-Mod Head Injury
- Neck/C-spine imaging
- Facial trauma
- Chest/ spine injury
- Abdominal Trauma
- Pelvic and genitourinary trauma
- Penetrating trauma
- Upper extremity fractures
- Lower extremity fractures
- GI emergencies
- Urologic emergencies
- GYN emergencies
- Orthopedic emergencies
- Physical Abuse/Neglect
- Psych emergencies/major behavioral issues, substance abuse
- Violence
- Death/Dying
- Pain management
- Altitude emergencies
- Bioterrorism
- Temperature emergencies
- Blast injury
- Radiation Injury
- Bites
- Drowning
- EMTALA
- Disaster/mass casualty
- Medical-Legal issues

TOXICOLOGY

- Anticholinergics
- Acetaminophen / Salicylates
- Household Alkalis and acids
- Oral Hypoglycemic Drugs
- Antidepressants (TCA, SSRI)
- Serotonin Syndrome / Neuroleptic
- Malignant Syndrome
- Cardiovascular agents (eg, digoxin, eta-blockers, Ca- channel blockers)
- Phenothiazines, butyrophenones, & other neuroleptics
- Organophosphates (inc Nerve Agents)
- Lead / Iron
- Hydrocarbons
- Agents of Chemical terrorism
- Alcohol toxicity (e.g.: ethanol, methanol, isopropyl, ethylene glycol)
- Sympathomimetics (e.g.: cocaine, amphetamines, MDMA, and Ecstasy)
- Hallucinogens / Other Substances of Abuse (e.g.: ketamine, PCP, and GHB-like agents)
- Methemoglobinemia & Narcotics
- Common toxic plants / Mushrooms
- Herbal/alternative remedies



Educational Curriculum continued

PROCEDURES / EXAMINATION / SPLINTING / ULTRASOUND

Discuss the indications, contraindications, key steps and potential pitfalls, complications and relevant

- (Annual) Rapid sequence intubation
- (Annual) Procedural sedation and analgesia
- (Annual) Difficult airway, direct and indirect laryngoscopy, percutaneous airway management
- (Annual) Cardiac pacing, converting SVT non- pharmacologically, defibrillation
- Splinting
- Reductions
- GI toxicology procedures
- GI procedures
- Chest procedures
- Regional anesthesia
- Neuro procedures
- Ophtho procedures
- ENT Procedures
- FB removal: airway, SQ, nasal, ear, tonsils, rectal/vaginal, fishhook, rings; ultrasound- guided FB localization/ removal
- Dental procedures: dental fractures, re- implanting avulsed teeth, dental splints, soft tissue injuries of mouth, reduction of TMJ dislocation
- Pediatric ECG interpretation
- Misc: Treatment of umbilical granuloma; hair tourniquet removal; envenomation management/tick removal
- Gynecologic exams
- ASA: Forensic examination of a sexual assault victim
- GU procedures
- OB/NICU procedures: delivering a baby, neonatal resuscitation, preventing meconium aspiration, congenital anomalies
- Management of hand and finger injuries
- Incision & drainage
- Burn care
- Skin toxicology procedures
- Trachs and g-tubes: Replacement and familiarity with different types
- Respiratory procedures

Educational Curriculum continued

JOURNAL CLUB

Every year, we will be covering 5 core topics, 4 to be covered by the first-year fellows, 1 by the 3rd-year fellows.

First Year Fellows

- Core topic #1: Quality Assurance / Quality Improvement
- Core topic #2: Randomized-controlled Trial
- Core topic #3: Diagnosis: Likelihood ratios
- Core topic #4: Clinical Decision Rule / CART analysis

Once core topics have been covered each year, pick from 1 of the following on a 3-year rotating basis:

- Harm/Case Control: OR vs RR
- Prognosis/Cohort Qualitative Research

Third Year Fellows

- Core topic #5: Overview/Metanalysis

Once core topic has been covered, pick 1 from the following:

- Non-inferiority Designs
- Economic Analysis
- Alternative (Bayesian, machine-learning, etc.) Practice guidelines/grading evidence
- Large Data

ULTRASOUND CURRICULUM

The objective of the ultrasound program for pediatric emergency medicine fellows is to train them in emergency ultrasound. PEM fellows will develop clinical emergency ultrasound skills that will be necessary and critical to their future practice of pediatric emergency medicine.

Throughout the 3-year fellowship, the PEM fellows will receive ultrasound training in the following formats:

- A. A 2-day Introduction to Ultrasound course during their first-year orientation, which will introduce the fellow to the basics of ultrasound.
- B. 3-month orientation (July/August/September of 1st year)
- C. A 1-month ultrasound rotation in the second year of fellowship which will include:
 - Supervised and unsupervised scan time
 - Quality assurance image review sessions
 - Ultrasound Journal Club attendance and presentation
 - Presentation of an US case on PEM Academy
- D. Continued clinical use of ultrasound throughout their fellowship, in addition to supervised and unsupervised scan time scheduled by the fellow. PEM fellows will achieve competency by completing a minimum number of scans.
- E. Incorporating Sono-Sim into simulation
- F. Image Simulation (to be done during first two years)

Leadership



Joelle Simpson, MD, MPH, Division Chief, Medical Director Emergency Preparedness

jsimpo@childrensnational.org

Undergrad: Harvard

Residency: Johns Hopkins

Med School: George Washington

Fellowship: Children's National

Joelle is the Division Chief of the Emergency Department since July 2021 but she has been working in the Division since she started as a PEM fellow in 2010. She is also the Medical Director for Emergency Preparedness for CNH since 2015 and lately she has been busily working on the hospital COVID response and overall disaster plans to help ensure a safe space for our staff, patients and visitors. Joelle spends a lot of time working with the AAP, federal agencies, local government, and local hospitals to advocate for kids in disaster planning. Joelle was born and raised in Trinidad the first 13 years of life and also claims New York, Boston, Baltimore and DC as her cities of residence. She pursued an MPH in medical school then headed to Baltimore for residency. Her first year out of residency she worked in private practice and as a part time pediatrician in a general ER in Baltimore – during the H1N1 pandemic. She attributes that career experience to motivating her to do pediatric emergency medicine and disaster medicine. She's stayed in DC since her PEM fellowship and her academic interests include disaster preparedness, prehospital medicine, and medical education. Joelle was recently awarded a federal grant to build a Pediatric Pandemic Network with other Children's hospitals and works with quite a few of the EMTc teams (MDs and RNs) in this work. In her downtime, Joelle considers herself a socialite and loves traveling, cooking, entertaining, and now exploring her skills in vegetable garden resuscitation. She's glad her pediatric resuscitation skills far surpass her ability to keep her plants alive.



Deena Berkowitz, MD, MPH, Associate Division Chief, Director of Acute Care Director Pediatric Urgent Care Fellowship

dberkowitz@childrensnational.org

Undergrad: Columbia

Residency: Yale

Med School: Yale

Fellowship: Children's National

Deena was born in Texas and raised near the beach in Belle Harbor, NY. After completing an undergraduate degree in history at Columbia, she earned a combined MD-MPH in health policy at Yale. She and her husband Benjamin, an intellectual property lawyer, live in Silver Spring, MD with their five children, ages 11 to 23 years. Deena's research interests focus around quality improvement, resource utilization and pediatric urgent care. In 2018, she and Ioannis Koutroulis co-founded an academic pediatric urgent care fellowship at Children's.



Kathleen Brown, MD, Associate Division Chief, Medical Director of Quality and Safety

kbrown@childrensnational.org

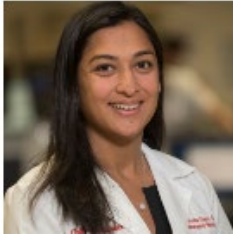
Undergrad: Georgetown

Residency: SUNY Syracuse

Med School: NYU

Fellowship: SUNY Syracuse

Kathy grew up on Long Island, but lost the accent long ago. After medical school in NYC, Kathy moved to upstate NY (against her better judgment) to complete residency and fellowship. She stayed on as an attending physician at SUNY Upstate until 2002. At that point it hit her that 200 inches of snow a year was not for her and moved to DC. Kathy's current research activities include many collaborative PEM projects through the PECARN network. Specific topics of interest are translation of research into practice, improving quality of emergency care and prehospital care. She recently served as the Medical Director for The EMSC National Resource Center and is active in national professional organizations (ACEP, AAP and NAEMSP). Locally, Kathy is involved in the MD and DC EMS systems. Kathy currently lives in Silver Spring. She wishes she had more time for her hobbies including gardening, painting, cooking and remodeling her home.



Monika Goyal, MD, MSCE, Associate Division Chief, Academic Affairs & Research
mgoyal@childrensnational.org
 Undergrad: Duke Med School: University of Pennsylvania
 Residency: CHOP Fellowship: CHOP

Monika was born and raised in Jersey and after brief stints in North Carolina for college, 1 year in San Francisco, and 12 years in Philadelphia. She then moved "South" and joined Children's National in 2012. Monika leads an NIH-funded research program, titled ADAPT-Addressing Disparities through Advocacy, Prevention, and Technology, which has a focus on addressing disparities and inequities in both provision of care and health outcomes for youth. Specifically, her work seeks to leverage the ED to improve adolescent sexual health outcomes and address inequities in the management of pain in the ED setting. She is also involved in firearm injury prevention research and advocacy. Monika has a passion for mentoring and helping faculty and trainees develop careers around their passion and purpose. She lives in DC with her husband and 2 daughters. Current interests include traveling, discovering new restaurants, baking unhealthy but tasty treats, and happy hour.



Sephora Morrison, MD, MSCI, MBA, Associate Division Chief, Director of Patient Experiences
morrison@childrensnational.org
 Undergrad: University of Michigan Med School: Univ. West Indies-Jamaica
 Residency: Long Island/Beth Israel, NY Fellowship: Northwestern/Lurie Children's

AKA "Seph", she was born and raised in Jamaica, but has moved around the US training in several locations, finally settling in DC close to family. She enjoys travelling with family, friends and solo, always looking for a new adventure, restaurant or place to "lime". Keeping active is part of her lifestyle and after probably trying most exercise forms, has found "Hot Yoga", which provides a physical challenge and a place and space to unwind from daily stresses and challenges. Come join me



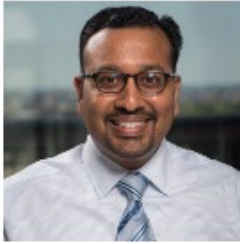
Pavan Zaveri, MD, MEd, Associate Division Chief, Director of Education Medical Director, Simulation Program
pzaveri@childrensnational.org
 Undergrad: University of Texas at Austin Med School: Baylor
 Residency: Baylor Fellowship: Children's National

Pavan (pronounced like "oven" with a "p") finished fellowship here, grew up all over Texas and has lived in most areas of the country. He currently lives in Maryland with his wife, and children, Manan and Kavya. After residency, Pavan worked for a year as an attending in the ED at Texas Children's. Pavan's research interests are in medical education, particularly with simulation and serves as the Medical Director for the Simulation Program at Children's. After a long shift Pavan likes to read for pleasure. He enjoys religion and traveling, particularly to India.



Alyssa Abo, MD, Director of Strategic Innovation - EMTC, Executive Director – Office of Biotechnology
aabo@childrensnational.org
 Undergrad: University of Pennsylvania Med School: Sackler School of Medicine
 Residency: Yale Fellowships: Boston Children's (PEM)/UCDavis (US)

Alyssa joined the division in summer 2013. Prior to moving to DC, Alyssa was living in New York City where she met her husband David. As an undergraduate at Penn, Alyssa studied bioengineering and her passion has always been to bridge the gap between technology and medicine. After medical school in Israel, Alyssa completed her pediatric residency at Yale-New Haven Children's Hospital, followed by fellowships in pediatric EM at Boston Children's Hospital and emergency ultrasound at the University of California, Davis. The initial focus of her career was on point-of-care ultrasound and now she is leveraging her expertise to bring more innovation to the ED and the hospital. As the Director of Strategic Innovation, she is focused on building partnerships within the hospital as well as externally with industry partners. In addition, she is the Executive Director for the Office of Biotechnology and a clinical advisor for the National Capital Consortium for Pediatric Device Innovation (NCC-PDI). Outside of the hospital, she enjoys spending time with her husband and daughters, family and friends, as well as traveling, and training for triathlons.



Dewesh Agrawal, MD, Vice-Chair for Medical Education, ACGME Designated Institutional Official
dagrawal@childrensnational.org
 Undergrad: Duke
 Residency: Boston Children's
 Med School: University of Michigan
 Fellowship: Boston Children's

Dewesh grew up in Toledo, Ohio and after residing in the Kalorama section of DC for several years now lives in Bethesda, MD. He and his lovely wife Priti have 2 children, a son Sachin and a daughter Jayna, who are arguably a little less adorable now in their teenage years. Dewesh joined Children's National in 2003 upon completion of his fellowship and was the Director of Residency Education for the EMTC until 2007, when he took on the role of Director of the Pediatric Residency Program at Children's National. After training 500 pediatric residents, he became the Vice-Chair for Medical Education and ACGME Designated Institutional official at Children's National in 2019. He holds a Master Teacher's Certificate in Medical Education and was the winner of the cherished faculty Golden Apple Award in 2005 and the Distinguished Teacher Award from George Washington University School of Medicine in 2019. His research interests include procedural sedation, fever evaluation, and graduate medical education. His outside interests include running and traveling. Over the past couple decades he has traveled to Fiji, Australia, Japan, Singapore, Malaysia, Thailand, Cambodia, Indonesia, Vietnam, India, United Arab Emirates, Qatar, Morocco, Croatia, Italy, Portugal, Spain, France, Germany, England, Ireland, Iceland, Canada, Alaska, Mexico, Peru, Venezuela, Costa Rica, Dominican Republic, Puerto Rico, and Aruba. He challenges anyone, anytime to a game of medical trivia. No, seriously... anyone, anytime. Bring it on!

Division



Tania Ahluwalia, MD, Associate Director of Global Health Programs
tahluwalia@childrensnational.org
 Undergrad: Nursing, McMaster University,
 Med School: Medical Doctor, Medical University Hamilton, Ontario of the Americas, Nevis
 Residency: University of Illinois
 Fellowship: Children's Mercy

Tania grew up in Hamilton, Ontario, Canada. Her main areas of interest are global health, particularly with the GW programs in India, and medical simulation. She has taught PEM in Thailand, Laos, India, and Saudi Arabia. Her passion is to educate trainees in host countries to improve the emergency management of children. She also loves to travel to explore different cultures and food! She enjoys yoga, spinning, and all things water - kayaking, paddle boarding, and scuba diving. She also loves coffee, high tea, spa days, photography, and puppies!



Shireen Atabaki, MD, MPH, FAAP, FACEP, Board Certified in Clinical Informatics Med Director Telemedicine, EMTC Assoc. Med Director Telemedicine, CNH Medical Director School Telehealth, CNH
satabaki@childrensnational.org
 Undergrad: Howard
 Residency: Children's National
 Med School: Howard
 Fellowship: Children's National

Shireen had a dad in the foreign service so enjoyed living all over the world (DC, Kabul, Beirut, Geneva, Tehran, Dubai ...) and yet she really believes that Washington is the most exotic place of all of them. She currently resides in Bethesda with her family and one of her daughters is at GWU. Shireen is Medical Director of School Telehealth and Associate Medical Director of Telemedicine for CNH. She is PI for the FCC Connected Care Pilot and COVID-19 Telehealth Programs with a focus on improving access to care for underserved families. She started the direct-to-consumer telehealth program at CNMC. Her research interests include TBI/concussion, Telehealth and clinical informatics. Her personal interests include skiing, hiking and writing. Shireen has witnessed a civil rights movement, a coup d'etat, a revolution and a women's rights movement. Her favorite quote: "Always remember there is a light at the end of this tunnel."



Rachael Batabyal, MD, Assistant Director of Research
rbatabyal@childrensnational.org
 Undergrad: Columbia
 Med School: Stony Brook
 Fellowship: Children's National
 Residency: New York Presbyterian Weill Cornell

Rachael grew up on a small farm in Michigan (Go Blue!). She moved to NYC for undergrad and stayed for 12 years. After completing residency at NYP-Cornell, she moved to DC for fellowship at Children's and loved it so much she decided to stay. Her research interests focus on basic and translational research, specifically the connection between midlife obesity and late-life neurocognitive changes. She also has a passion for advocating for patients with childhood obesity. If you can't find her in the office, she is probably up in the lab running experiments on her cells. Aside from working, she loves traveling, reading, practicing Yoga, meditation, and spa days. She lives in Columbia, MD with her husband and puppy.



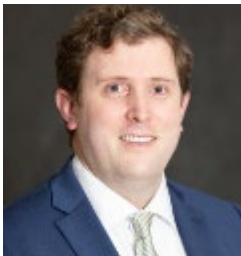
Kristen Breslin, MD, MPH, Assistant Director of Research, Fellowship Research Director
kbreslin@childrensnational.org
 Undergrad: MIT Med School: Harvard
 Residency: Boston Combined Residency Program Fellowship: Children's National

After finishing residency in 2002, Kristen stayed on for 4 years as a community hospitalist and urgent care doctor for Children's Boston. In 2006, she returned to the DC area as a hospitalist and ED associate at Children's National. After seeing the fellowship program in action, she signed on! She completed her PEM fellowship and her MPH in Epidemiology through GW in 2012. Her research interests include patient transitions to inpatient care, analysis of medium and large datasets, and teaching study design and biostatistics. She has been an IRB member since 2013 and became IRB Chair in 2021. She has also continued her interest in global health as a faculty mentor for residents rotating in Central America and teaching residents and nurses in the Global Child Health Week. She lives in Bethesda with her husband and her daughter.



Amie Cahill, MD
acahill@childrensnational.org
 Undergrad: Rhodes College Med School: University of Tennessee
 Residency: Le Bonheur Children's – UTHSC Fellowship: Children's National

I'm a Southern woman born to Midwestern transplants to the Southeast. While I spent my childhood in Atlanta and Birmingham, Memphis was my home for my education and training from college through residency. Children's National PEM Fellowship lured me to DC and my current beloved Adams Morgan Neighborhood. As a new attending here at Children's I am pursuing academic and clinical interests in Safety and Quality as well as Trauma. In addition, I plan to pursue an MBA from GWU. Though I wish I was interesting enough to have real hobbies, I generally just enjoy spending my free time at the park or running trails with my awesome dog Shelby, having happy hour with friends, traveling (when that becomes a thing we can do again), and exploring outdoor breweries, camping, and hiking areas with friends and our dogs.



Tim Carr, MD
tcarr2@childrensnational.org
 Undergrad: Christopher Newport Univ (VA) Med School: Trinity School of Medicine
 Residency: Children's Hospital of the King's Daughters (Norfolk, VA) Fellowship : Children's National

I just finished fellowship here at CNH. I was born in Huntington, West Virginia, but grew up in Williamsburg, VA, famous for Colonial Williamsburg (yes, I did own a tri-corner hat at one point in my life). I went to medical school in the Caribbean and was fortunate to be able to come back close to home for residency in Norfolk, VA. My wife is a neonatologist and we recently welcomed a son into our family! I have an interest in Quality Improvement and Medical Education. I am currently spending the year as doing a fellowship in ultrasound. In my spare time I love to play music, golf, travel and explore DC!



James Chamberlain, MD, Chief Emeritus, Director of Data Analytics and Informatics
jchamber@childrensnational.org
 Undergrad: RPI Med School: Connecticut
 Residency: Maryland Fellowship: Children's National

Jim Chamberlain is the oldest member of the division and has been at Children's National since 1988. He became interested in data analytics as a method for driving quality improvement when he was Division Chief. He is now Director of Data Analytics and Informatics for the division and heads the NERDS (Nexus for Emergency Research and Data Science). He has three children and two wonderful grandchildren who live in London.



Jennifer Chapman, MD, Fellowship Director
jchapman@childrensnational.org
 Undergrad: Princeton
 Residency: Northwestern/Lurie Children's

Med School: McGill
 Fellowship: Nationwide Children's

After some years in Montreal (go Canadiens!), Chicago and Columbus, Ohio, I have returned to the city in which I grew up. I have had the opportunity to travel to wonderful countries including China, Swaziland, and Armenia to both practice and teach pediatrics. I trace my love for international health to my diplomat father and to my mother, who raised us with a passionate belief in the oneness of all people. More locally, I am absorbed by working on projects and advocacy for immigrant families and by serving as the Fellowship Program Director. Outside of work, I lend my energies to community-building work and aspire to creating a porch garden for my apartment.



Sarah Ash Combs, MD, Director of ED Outreach
scombs@childrensnational.org
 Undergrad: Princeton
 Residency: Mount Sinai

Med School: University of Michigan
 Fellowship: UCSD / Rady Children's

Sarah hails from London, England – the land responsible for spawning cultural greats such as John Oliver, Ricky Gervais and, of course, the Spice Girls. She decided to pond-hop for college, after which she worked as an Assistant Principal in Harlem, NYC, and then crisscrossed the country for medical school, residency and fellowship. She now lives in Southwest DC with her husband, two little kids, and cat. She serves as the Director of Outreach for the ED, working with local hospitals, the CNH PR & Marketing department, and media outlets to improve PEM care and knowledge in the broader community. Sarah also holds the dubious title of retiree at her (somewhat) young and tender age, having had a former career in the ballet world. She still devotes much of her free time to dancing, teaching others to dance, and forcing her friends to join her in going to watch other people dance.



Katie Donnelly, MD, MPH, Medical Director, Safe Kids DC
 Medical Director Children's National Hospital-Based Youth Violence Intervention Program
kdonnell@childrensnational.org
 Undergrad: Wofford College
 Residency: Northwestern/Lurie Children's

Med School: Robert Wood Johnson
 Fellowship: Children's National

Katie grew up in the wilds of New Jersey and after a brief stint in South Carolina for college, returned to New Jersey for medical school. She ventured to Chicago for residency and a chief year, where she developed a fondness for deep dish pizza, ice hockey and street festivals. She chose a fellowship in DC for the chance to train at an excellent tertiary care pediatric emergency department. She liked it here so much she decided to stay on as an attending, no matter who gets elected every 4 years. Her research interests include injury prevention, especially firearm injury prevention and violence prevention. Outside of the ED, Katie enjoys live sporting and music events, the National Zoo and all the free museums here in DC! She lives with her partner and three(!) black cats in Petworth.



Tress Goodwin, MD
tgoodwin@childrensnational.org
 Undergrad: Stanford
 Residency: Medstar Georgetown/WHC EM

Med School: Stanford

Tress was raised in sunny San Diego and moved to DC for Emergency Medicine residency in 2008. After residency she worked at INOVA Fairfax for 6 years in both the adult and pediatric ER. She joined the US Navy reserves and deployed to Afghanistan in 2015, serving as a trauma team leader at the NATO Role 3 Hospital in Kandahar. While out of the Navy now, she remains unofficially "in" as she married Brett, a Navy officer who she met at her deployment orientation. While she much prefers "little people" and loves working at CNH, she also works adult shifts in the community. Her academic interests include military and disaster medicine as well as pandemic preparedness. She works with Dr. Simpson on emergency preparedness for the department as well as the pediatric site director for the Regional Emerging Special Pathogen Treatment Center. She lives in the District with her husband Brett, their twins Sam and Gabriela, and their dog Kiwi.



Camilo Gutierrez, MD, FACEP, FAAEM, Director of Global Health Programs
cgutierrez@childrensnational.org
 Med School: El Bosque University Bogota, Colombia
 Residency: Miami (Nicklaus) Children's Hospital Fellowship: Nationwide Children's

Camilo is Director of Global Health Programs for the Division of Emergency Medicine. He is Associate Professor of Pediatrics and Emergency Medicine at GW and joined the division in 2018 after 10 years in Boston University School of Medicine / Boston Medical Center. Camilo has diverse interests and was Medical Director for EMSC in MA and led the pediatric emergency response at his institution. As leader for Global Health for the division, he is working in strengthening the opportunities for faculty and fellows to develop opportunities for international collaborations. Camilo is a key opinion leader internationally with emphasis in development of pediatric acute and emergency care systems globally and has been lucky to travel frequently across the globe for these initiatives. He occupies various leadership roles in national and international EM societies and will continue to collaborate and integrate his international efforts with the various Global Health initiatives at CNMC. In his spare time, he enjoys the arts.



Rachel Hatcliffe, MD
rhatchif@childrensnational.org
 Undergrad: University of Michigan Med School: University of Michigan
 Residency: Children's National Fellowship: Children's National

I was born in England but moved across the ocean to the Midwest (specifically Chicago) as a pre-teen. I lost the accent but gained a love for all things maize and blue at the University of Michigan for both undergrad (history major!) and medical school. I moved to DC for residency in 2015 and never left! I completed two years as a clinical associate in the emergency department which led me to completing PEM fellowship here at Children's National. My academic interests include prehospital care and patient safety. I love hiking in Rock Creek park, finding great breakfast sandwiches and watching Bravo!



Ellie Hill, MD
ehill2@childrensnational.org
 Undergrad: Carleton College Med School: Univ of Pittsburgh
 Residency: Duke Fellowship: Nationwide Children's

Ellie grew up in Minnesota and has trained in several locations including Pittsburgh, Duke, and Columbus. She is happy to finally find a home in D.C. In her research, she focuses on biomarkers for disease and antibacterial stewardship. She spends her free time with her husband, children, and pets. Find her for outside fun and board games.



Sarah Isbey, MD, Associate Director for Safety
sisbey@childrensnational.org
 Undergrad: Dartmouth Med School: UNC Chapel Hill
 Residency: Colorado Fellowship: Children's National

Sarah grew up in the mountains of NC before heading to New Hampshire for college. After college, she taught high school in DC and then made her way back to North Carolina for medical school. Looking for a bit more hiking/skiing and less humidity, she and her husband moved to Colorado for residency. Alas, she craved humidity and family and moved back to DC for fellowship and hasn't looked back! Her research interests include quality improvement, patient safety, left without being seen in the ED, and patient portal use. She serves as the Associate Director for ED Safety. In her spare time, she is usually hanging out with her husband and kids (daughters Anna (6) and Maya (3)) and getting outside as much as possible!



Lenore Jarvis, MD, MEd, Director of Advocacy and Health Policy
lj Jarvis@childrensnational.org
 Undergrad: Ohio State Med School: Ohio State
 Residency: Nationwide Children's (Columbus) Fellowship: Children's National

Raised in Cleveland, OH, I have strong Ohio pride after attending undergrad, medical school and residency in Columbus, OH. OH-IO, GO BUCKS! Prior to attending medical school, I taught first grade for Teach for America in Las Vegas while obtaining a Master of Education. I have many academic interests. International Health is important to me, and I have volunteered medically in Haiti, South Africa, Senegal and India. I am also interested in medical education and child advocacy. In my free time, I enjoy exploring DC, running, biking, yoga, and traveling.



Jaclyn Kline, MD, Medical Director of Informatics

jkline@childrensnational.org

Undergrad: University of Virginia

Residency: Brown / Hasbro Children's

Med School: VCU

Fellowship: Children's National

Jaclyn was born and raised in Pittsburgh, but was drawn to warmer weather, traveling to UVA for college and staying in Virginia at VCU in Richmond for medical school. She then decided to try a new locale and ventured to New England for residency at Brown. Being closer to family and friends in the DC area happily drew her to Children's for fellowship and it was an easy choice to stay on as an attending. Her academic interests are in informatics and quality improvement, particularly around improving evidence-based care for children through use of clinical decision support and QI initiatives. In her free time, she enjoys spending time with her husband and two young kids, making it out to explore DC's many great restaurants when she can.



Ioannis Koutroulis, MD, PhD, MBA, Director of Research Co-Director Academic Urgent Care

Fellowship ikoutrouli@childrensnational.org

Undergrad: University of Athens

Med School: University of Athens

Residency: Albert Einstein

Fellowship: Drexel / St. Christopher

Ioannis is originally from Greece. You will find him there every summer enjoying the beautiful beaches. His professional interests include basic and translational research in sepsis and metabolism, as well as medical education and admissions. He is the Director of Research for our division. He is also an avid traveler, trying to explore different cultures and tastes (although freddo -which means cold- cappuccino still remains his favorite thing in the world).



Simone Lawson, MD

Assistant Program Director of the Pediatric Emergency Medicine Ultrasound fellowship

sllawson@childrensnational.org

Undergrad: UNC Chapel Hill Med School: UNC

Residency: LSU HSC (Children's Hospital New Orleans)

Fellowship: Carolinas Medical Center (PEM) Children's National (US)

Simone grew up in Charlotte, NC and is a Carolina Girl through and through. She attended both undergrad and medical school at UNC Chapel Hill. She moved to New Orleans for Pediatrics residency (Children's Hospital New Orleans) and stayed a couple more years working in two of the pediatric EDs there. She was thrilled to move back home to Charlotte for PEM fellowship at Carolinas Medical Center (now Atrium Health). During fellowship she had great mentors in ultrasound - so much so, that she decided to pursue another fellowship in Pediatric Emergency Medicine Ultrasound, which is what brought her to Washington, D.C. and Children's National. Since working at Children's National, she has completed the Master Teacher and Leadership Development Program and received her Master's of Education at GWU in 2023. She is currently Program Director of the Pediatric Emergency Medicine Ultrasound fellowship. She spends her free time doing reformer Pilates, going to the Kennedy Center, tending to her plants, and traveling.



Matthew Lecuyer, MD, MPH

mlecuyer@childrensnational.org

Undergrad: Georgetown University

Residency: Lurie Children's Hospital/Northwestern

Med School: UMass Medical School

Fellowship: Brown University

Matthew grew up in New Bedford, MA and made his first stay in DC in undergrad. After residency in Chicago, and fellowship back in New England, he's glad to have moved back to the District to join the faculty at Children's National. His academic interests include population health, LGBTQ health, and advocacy related work with the AAP and AMA. Matt lives in Logan Circle with his husband, Scott. In his free time, Matt enjoys running, traveling, exploring how much DC has grown since undergrad, and Disney.



Christina Lindgren, MD, Associate Fellowship Director

clindgren@childrensnational.org

Undergrad: Georgetown

Residency: Johns Hopkins

Med School: Columbia

Fellowship: Boston Children's Hospital

Christina grew up in DC a few miles from Children's National. After moving up and down the east coast, she joined the CNMC faculty in 2015. Christina's academic interests include graduate medical education and medical simulation. She is passionate about residents and fellow education and loves being a part of our fellowship program. When she is not at work you can find Christina at home in Kensington, MD with her husband Myles, six-year old twin girls Sydney and Julia and eight-year-old son Sawyer. Her favorite thing to do is spend time outside with family and friends, running, biking, hiking, swimming, you name it.



P. Jamil Madati, MD

pmadati@childrensnational.org

Undergrad: Stanford University

Residency: Emory

Med School: University of Rochester

Fellowship: Boston Children's Hospital

Jamil was born in Dar Es Salaam, Tanzania, grew up in England and moved to the USA as a teenager. Much like his early life, he continued to move around for his post graduate medical training from Rochester, NY, to Atlanta, GA, to Boston, MA and then to San Diego, CA. He joined the CNMC faculty in 2012 and although he sorely misses the sun, beach and palm trees of San Diego, he is excited to work in such a diverse, energetic and academically productive division. His main academic and administrative interests include fellow, resident and medical student education and mentoring, global health, formerly assisted with billing, coding and documentation initiatives for the ED and the former Medical Director for CNMC Satellite ED at UMC. In 2022, he stepped down from his leadership roles within the division and is contemplating the next "big adventure." When not at work, he enjoys running, playing soccer and, when weather permits, training for and competing in triathlons.



Dave Magilner, MD

dimagilner@childrensnational.org

Undergrad: Dartmouth College

Residency: Albert Einstein Healthcare Network

Med School: Harvard Medical School

Fellowship: Children's Hospital Colorado

David grew up in Philadelphia, and as challenging as it is, he still has a place in his heart for Philly sports teams. He was educated and did residency on the east coast, then headed west for fellowship in Denver, then farther west for his first job at Mary Bridge Children's Hospital in Tacoma, WA. He moved to DC after a 10-year stint at Wake Forest Baptist health, where he founded and directed the PEM fellowship program. He lives in Columbia Heights with his border collie mix and can be seen on the ultimate (Frisbee) field most days he isn't working.

A.C. Maxwell, MD

amaxwell1@childrensnational.org

Undergrad: Hendrix College

Residency: LSU-Shreveport (EM)

Med School: University of Arkansas

Fellowship: UT-Memphis (PEM), Columbia (US)

Maxwell joined our faculty in Spring of 2017, having completed EM residency, PEM fellowship and a PEM US fellowship. Maxwell balances their time between practicing General Emergency Medicine and Pediatric Emergency Medicine while expanding pediatric point-of-care US training for trainees. In addition, Maxwell is passionate about LGBTQ (trans/nonbinary specific health) as well as harm reduction and is an active volunteer for several organizations in the community that serve these populations.



Nichole McCollum, MD

mmcollum@childrensnational.org

Undergrad: University of Georgia

Residency: Emory

Med School: Mercer University

Fellowship: Children's National

Nichole spent most of her life in Georgia before moving to DC after residency. She worked at CNH in the ED as a clinical associate before starting PEM fellowship. Her research interests include quality improvement, patient safety and provider wellness. Outside of work she enjoys spending time with family! She and her husband have a daughter, Josie (16 months) and a dramatic furchild named Cain (9 years). She loves traveling, cooking, college football (Go Dawgs!), the peloton and being active.



Mandisa McIver, MD
mamciver@childrensnational.org
 Undergrad: Oakwood
 Residency: Bronx Jacobi Medical Center

Med School: Loma Linda
 Fellowship: Schneider Children's (LIJ)

Mandisa is originally from Maryland but like many others, left the comforts of home after high school to pursue a career in medicine. Her path has taken her to Oakwood University in Alabama, Loma Linda University School of Medicine in California, Jacobi Medical Center in Bronx, NY for pediatric residency, and Long Island Jewish Medical Center for PEM fellowship. Upon completion of her training, she accepted a position at UNC in Chapel Hill to work as a PEM attending for 5 years. There, she led a QI project in asthma care in the ED and was selected to participate in a junior faculty leadership program. She is married, with 3 children. Although they enjoyed their time in North Carolina, Mandisa and her family decided to move back home to Maryland in 2016. Since joining the PEM team at Children's National Hospital, she has worked on a QI project focused on improving care in anaphylaxis patients in the pediatric ED in addition to working with the Patient Experience Leadership Team. In her free time, she enjoys reading books, participation in community outreach, working with youth groups, and spending time with her family. She has taken up running as a hobby leading her to run several half marathons, one full marathon and is now training for her first triathlon.



Kenneth McKinley, MD
kmckinley@childrensnational.org
 Undergrad: Harvard
 Residency: Columbia

Med School: University of Pennsylvania
 Fellowship: Columbia

At the time of this writing, Kenny is 12,566 days old. He grew up in Danville, PA – the smallest but most beautiful of the numerous US towns and cities of that name. He enjoyed living in Boston, Philadelphia, and New York before landing in Washington, DC after fellowship. He met his wife in Buenos Aires during a college semester abroad and convinced her that board games and science are cool. Kenny's research interest is in the use of computer models to evaluate the impact of system changes on patient flow and care delivery.



Jillian Nickerson, MD MS, Medical Director of Children's National Emergency Department at Southern Avenue
jnickerso2@childrensnational.org
 Undergrad: Brown
 Residency: EM, Mount Sinai Hospital, NY

Med School: Mount Sinai
 Fellowship: Children's National

I grew up in Southern California, which explains my sunny disposition, but spent 10 years in New York including a residency in Emergency Medicine, where I developed some grit. I completed fellowship here at Children's National and then spent a year working in a rural emergency department in Southern Maryland caring for both adults and children. I love our Southern Avenue campus because of the great comradery among all providers, the wonderful patient population, and the chance to practice emergency medicine without all of the consultants right at your fingertips but still with the support of main campus. I am also passionate about medical education and improving the care of all children seen in the community. I live in Capitol Hill in DC and love to explore with my three rambunctious boys, Saul, Ira and Lenny, my husband, Colin, and our sweet pup, Sadie. We love checking out playgrounds, hiking trails, and running on the mall. Oh, and all of the amazing restaurants DC has to offer!



Karen O'Connell, MD, MED, Director of Patient Safety and Resuscitation
koconnel@childrensnational.org
 Undergrad: Duke
 Residency: Schneider Children's (LIJ)

Med School: Eastern Virginia
 Fellowship: CHOP

Karen is one of our PEM attendings and has been at Children's since 2005. She has served as the Director of Patient Safety for the Emergency Medicine and Trauma Center since 2011 and the Associate Region V Pediatric Medical Director for the state of Maryland with MIEMSS since 2007. Karen is an active member of the PECARN research collaborative and served as the site PI. Her personal research interests include medical and trauma resuscitation process improvement, patient safety, and family presence in the emergency setting. She lives in southern Maryland with her husband (Paul Manicone, MD, Interim Division Chief of the Hospitalist Division at Children's), two children (Gabe – 17 yrs; Alivia – 15 yrs), and 20+ farm animals. Her passions include equestrian sports, gardening, reading, and midwifery involving farm animals. In her 'zen moments,' she hangs out with the bugs in her garden and pulls ticks off her children.



Shilpa Patel, MD, MPH, Medical Director IMPACT DC Asthma Clinic

spatel@childrensnational.org

Undergrad: Johns Hopkins

Residency: Children's National

Med School: Penn State

Fellowship: Children's National

Raised in Arizona, Shilpa moved to the east coast for college, where she met her husband, Anand. She joined CNH as a community track resident and stayed on as a chief resident. Before coming back to CNMC as a fellow, she was lucky enough to spend a year in Old San Juan, Puerto Rico. She is the medical director and sees patients for the IMPACT DC Asthma Clinic. Her research interests include mapping and modeling, local disease/surveillance and ED-based public health preventions in the areas of firearm safety, suicide prevention and asthma. She also enjoys the intersection of tech and medicine. Shilpa, Anand, and their kids, Ashvini(15), Nayathi(12) and Nishanth(6), live in Bethesda. (pic: my 12yo teaching me how to do a computer selfie)



Asha Payne, MD, MPH, Medical Director, DCH

aspayne@childrensnational.org

Undergrad: Columbia

Residency: Duke

Med School: Duke

Fellowship: Children's National

Originally from Kingston, Jamaica, Asha grew up in Long Island, NY. Along her career path, she was a high school biology and chemistry teacher in Houston and picked up an MPH in medical school. She joined our faculty in 2011 and completed the final year of her CHRCDA (institutional K12 award), working on the role of sex steroids and asthma in 2013. She now works on several Improvement Science initiatives for the department and the hospital. In 2018, she became the Director of the Quality and Safety Academy which supported the academic productivity of QI trained faculty and staff. Most recently, she became the Medical Director of the Children's ED at Doctor's Community Hospital. In her free time, she enjoys international travel, working out, and exploring new places to dine. As a former bartender, she also enjoys making her own cocktails.



Jay Pershad, MD

jpershad@childrensnational.org

Undergrad: University of Mumbai

Residency: Wayne State

Med School: University of Mumbai

Fellowship: University of Alabama

I attended University of Mumbai medical school, Wayne State University for pediatric residency and UAB for my fellowship. I was previously at the University of Tennessee Health Science Center & Le Bonheur Children's Hospital, prior to joining the CN family. I'm a sports talk show junkie & a closet Patriots fan, intrigued by their coach's leadership style & team's consistent performance over the last decade! Otherwise, I enjoy spending time with family & listening to podcasts, while taking a walk in the park. My beautiful wife Rita and I are proud parents of two independent thinking, bright, hardworking girls. We became empty nesters last fall & are slowly adjusting to the change. I am humbled each day by the opportunity to work with an incredibly talented team of faculty, fellows, advanced practice providers and staff in our division. At CN, you will receive a superior education & a clinical experience that will prepare you for a career in any practice setting - community or academic & be able to manage varying levels of patient acuity. We strongly believe that your work life balance is the key to our success as a division.



Michael Quinn, MD, Medical Director of Transport Medicine

mquinn@childrensnational.org

Undergrad: Georgetown

Residency: Maryland

Med School: Georgetown

Fellowship: NYU

Dr. Quinn serves as Medical Director of Transport Medicine. He participates in supervision and teaching of residents and medical students during their clinical rotations. He is also involved in the department's educational outreach activities, most recently lecturing on toxicology for the CNMC Pediatric Board Review Course. His wife and two boys like camping so he has to go along with them. When he does, he tries to take one of his bicycles to ride the roads and trails.



Dennis Ren, MD
dmren2@childrensnational.org
 Undergrad: UC Berkeley
 Residency: Children's National

Med School: Tulane University
 Fellowship: Children's National

Dennis grew up in the San Francisco Bay Area. After undergrad, he spent time as an AmeriCorps volunteer in Oakland, CA before heading to medical school in New Orleans. He completed his pediatric residency and pediatric emergency medicine fellowship at Children's National. His interests include medical education, FOAMed, disaster preparedness and simulation. He currently hosts a monthly critical appraisal podcast in collaboration with The Skeptics' Guide to Emergency Medicine. He worked with other FOAMed creators like, First10EM, Don't Forget the Bubbles, PEM Currents, and PedsRAP. Outside the hospital, he enjoys spending time with his wife and daughter.



Jeremy Root, MD
jroot@childrensnational.org
 Undergrad: University of Virginia
 Residency: Children's Hospital of Pittsburgh

Med School: Case Western
 Fellowship: Children's National

I spent the formative years of my youth in Burke (Northern, VA) and hence have a diehard love for all things related to DC sports. As a former undergraduate sports writer and Wahoo alum, I am also a dedicated Virginia Cavaliers fan. I spent one year of bench research at the NIH prior to my semi "Midwest" stops in Cleveland for medical school and in Pittsburgh for residency, before returning home to the DMV. Partially explaining my field of choice of pediatric emergency medicine, I have a love of most things active, and I enjoy taking advantage of the great outdoor weather in DC with running, biking, DC sports leagues and Capitol Hill adventures with my wife and 3 young children. My research interests include acute concussion management and prolonged concussion symptoms.



Alexandra Rucker, MD, Asst Med Director, UMC
arucker@childrensnational.org
 Undergrad: George Washington
 Residency: Children's National

Med School: George Washington
 Fellowship: Children's National

Alex finished fellowship in 2009 after 2 years working as an associate in the ED. Alex is a life-long Washingtonian and, ah yes, a long-suffering Redskins fan. Her academic interests include fever without source, health-related social problems, and health disparities. Her hobbies are cooking, trivia and photography. In her spare time, Alex can be found watching sitcoms, training for obstacle courses and finding new recipes to satisfy her finicky family. She can also be found on endless late-night walks with her beagle, Charlie.



Haroon Shaukat, MD, Co-director ED Resident and Medical Student Education
hshaukat2@childrensnational.org
 Undergrad: University of Maryland
 Residency: Goryeb's Children's

Med School: American University of the Caribbean
 Fellowship: Children's National

Haroon was born and raised in Silver Spring, Maryland. After time away, he returned to the area for fellowship and stayed on as an attending. He is part of the ED Education Team with his role of Co-director of resident and medical student education and Faculty Advisor/Host of PEMAcademy, a free- open-access medical education (FOAMed) platform relevant to pediatric emergency medicine. When he is not spending his time working, he spends it with his wife and two children bumming around!



Sophia Smith, MD
srsmith@childrensnational.org
 Undergrad: University of Florida
 Residency: Baylor

Med School: University of Florida
 Fellowship: Baylor



Amanda Stewart, MD

AMSTEWART@childrensnational.org

Undergrad: UCLA

Residency: Boston Combined Residency Program in Pediatrics

Med school: University of Pennsylvania

Fellowship: Boston Children's Hospital

Amanda (she/her) joined Children's National in June from Boston Children's Hospital, where she completed her pediatrics residency, PEM fellowship, as well as an Advocacy and Public Policy fellowship. In addition to working in the ED, she served as the Lead Physician for Clinician Advocacy in the Boston Children's Hospital Office of Government Relations. Her research is focused on child and family homelessness and other health-related social needs. She has been involved in legislative advocacy around addressing housing instability, food insecurity, insurance coverage for immigrant children, improving the pediatric behavioral healthcare system, and other policy solutions to address adverse social determinants of health for children and families. She grew up in San Diego and is an avid UCLA fan (go Bruins!). She and her wife and pup are living in Bloomingdale, and are excited to get to know the DC restaurant scene and explore great hikes in the area!



Stephen Teach, MD, MPH

steach@childrensnational.org

Undergrad: Yale

Residency: Boston Children's

Med School: Harvard

Fellowship: Boston Children's

Stephen grew up in Buffalo, New York and currently lives in Bethesda with his wife Libby, a marine biologist who works at NOAA. Their two kids work in Chicago (Owen) and Boston (Eliza). Former Chair of the Department of Pediatrics at Children's National and the GW School of Medicine, Stephen directs the research component of the IMPACT DC asthma program which includes a highly novel asthma follow-up clinic based in our ED itself. His main research interest focuses on the disparities evident in the care and outcomes of under-resourced children with asthma, particularly their over-dependence on urban emergency departments for episodic care. He enjoys mentoring fellows and junior attendings. Outside the hospital he enjoys "growing things." Another point of interest is that his most famous relative is Edward Teach, a.k.a. Blackbeard the Pirate.



Rosemary Thomas-Mohtat, MD, Director of Emergency Ultrasound Fellowship

rthomasm@childrensnational.org

Undergrad: CUNY Brooklyn College BA/MD

Residency: Children's Hospital of Pittsburgh (PEM), GWU (US)

Med School: SUNY Downstate

Fellowship: Children's National

I've lived an adventurous life both geographically and professionally. I grew up an army brat in India living in 5 cities in my ten years there, then schooling in the many boroughs of NYC. Along the way I learned a lot of languages, finally settling on Spanish. My professional journey began with residency and a year of private practice in Pittsburgh, followed by Pediatric Nephrology fellowship in the Bronx and a year of genetics research at Columbia University, all the while working in a Peds ED in NYC. It was there that I found my true calling! I graduated PEM Fellowship here at CNH in 2015, and a one-year Point of Care Ultrasound (POCUS) Fellowship (GWU and CNMC) in 2016. I am an enthusiastic champion of POCUS! In my gap year after residency, I hiked the Inca Trail to Macchu Picchu and got certified in scuba on the Great Barrier Reef. For our honeymoon, my husband and I did a "almost around the world" tour, climbing Mt. Kilimanjaro, visiting the mountain gorillas in Rwanda, the Taj Mahal and an ashram in India. We have an 12 yr old daughter and an 9yr old son.



Theodore Trigylidas, MD

ttrigylida@childrensnational.org

Undergrad: University of Ottawa

Residency: University of Maryland

Med School: St George's University

Fellowship: Children's Mercy

Theo was born and raised in Canada's capital in Ottawa. After completing medical school in Grenada, residency at University of Maryland and fellowship at Children's Mercy hospital, he determined he is naturally drawn to capital cities and is looking forward to joining CNMC faculty. Over the years, Theo has been a good luck charm to sports teams of the cities he's lived in (Giants 2012, Ravens 2013, Royals 2015) and is excited to bring more good fortune to DC. His research interests include injury prevention (firearm violence) and point-of-care ultrasound research. Outside of work, Theo enjoys playing guitar, recording music, playing in bands, and spending time with his dog, Jimi Hendrix.



Caleb Ward, MB BChir, MPH, Associate Director of Research

caward@childrensnational.org

Undergrad: University of Cambridge

Residency: John Hopkins

Med School: University of Cambridge

Fellowship: Children's National

I grew up in rural New Zealand (think the shire from Lord of the Rings), before moving to Cambridge, England for undergraduate and medical school (think Harry Potter-style dining halls). I completed 2 years of post-graduate training in London before moving to the US to pursue pediatric residency. I am interested in EMS and prehospital care of children. I am the Program Director for EMS for Children in Washington DC and am working on research projects looking at C-spine immobilization and care of low acuity patients by EMS. Outside of work, life is currently dominated by the small petting zoo we run at home (three kids < 8y/o).



Emily Willner, MD

ewillner@childrensnational.org

Undergrad: Brandeis University

Residency: Children's Hospital Boston/BMC

Med School: Harvard

Fellowship: Children's Hospital LA

Emily grew up mostly in New Jersey, and had a long stint in Boston for undergrad, med school, and residency. She then made her way to Los Angeles where she thoroughly enjoyed the sunshine and the ocean (and did PEM fellowship) before returning to her East Coast roots. She currently lives in Capitol Hill, DC with her attorney/musician husband, 10 year old daughter and 7 year old son. Emily's academic interests are primarily in medical education and safety. She recently completed her Master's in Education, is a co-Director the Pediatric Acute Care Fellowship, and works on procedural and safety education for fellows (and residents), and enjoys teaching and mentoring trainees. Outside of work, Emily occupies herself by hiking, biking, growing a fickle city garden, yoga, and chasing two small children.



Sam Zhao, MD, MEd Co-director ED Resident and Medical Student Education Assistant Program Director for Intern Selection, Pediatric Residency Program

szhao@childrensnational.org

Undergrad: University of Virginia

Residency: Columbia

Med School: University of Virginia

Fellowship: Children's National

Sam grew up in Richmond, VA and went to school in Charlottesville, VA. He took a bite of the Big Apple when he moved to NYC for residency, but all the karaoke bars and dollar pizza slices in the world couldn't keep him from coming back to the mid-Atlantic. Sam's research interests are in medical education, and he recently completed a Master's in Education at George Washington University. When he's not at work, he spends the majority of the time running, hiking, camping, and doing anything outdoors with his dog, Titan. He also plays the piano and annoys his friends by cracking awful puns.

Fellows



Chidimma J. Acholonu, MD MPH, 1st Year Fellow

Undergrad: Rutgers University
Residency: University of Chicago

cacholonu@childrensnational.org
Med School: Morehouse School of Medicine

Chidimma is a current first year fellow at Children's National. She completed her pediatric residency at University of Chicago where she also served as Chief Resident before transitioning to fellowship. She earned her medical degree from Morehouse School of Medicine in 2019 where she was actively involved with the Student National Medical Association (SNMA) and continues to work closely with medical students through SNMA. She is the current chair and trustee for the Post-Graduate Section of the National Medical Association and also serves as the Communication Chair for the Section on Minority Health, Equity and Inclusion for the AAP. In 2011, she earned her MPH from George Washington University with a concentration in Community-Oriented Primary Care, and afterwards continued to work in the school health space with DC, Baltimore, and Alexandria public schools before matriculating to medical school. She is excited to be back in DC for fellowship training at Children's National! Chidimma enjoys getting outside on her road bike, exploring the amazing trails around the area, curating the perfect brunch experience, and all things Philadelphia sports! She is looking forward to the amazing opportunities at Children's National and continuing to grow her skills and expertise in emergency medicine and community advocacy.



Adenike Animasaun, MD

AANIMASAUN@childrensnational.org
Undergrad: Rutgers University-New Brunswick
Medical School: Cooper Medical School of Rowan University
Residency: Northwell-LIJ Cohen Children's

I was born in Osun State, Nigeria and moved to Easton, PA when I was 8 years old. Grew up in Easton then became an unofficial Jersey girl when I moved to New Jersey for undergrad and medical school and spent over 8 years there. I then moved to Queens, NY for residency at Cohen Children's Medical Center. I will forever be a Philadelphia sport fan though (Go Eagles!). Some of my interests are social determinants of health, global and immigrant health. I love traveling, learning about new cultures, and trying out new restaurants. I'm very excited to be moving to DC because there is so much to do! I'm looking forward to exploring all the things DC has to offer and always looking for recommendations on new things to try!



Richmond M. Castillo, MD, MA, M

RCASTILLO@childrensnational.org
Undergrad: John Hopkins
Graduate School: John Hopkins

Medical School: Mayo Clinic
Residency: Northwestern Emergency Medicine

Hi all! I grew up in Jersey City, NJ and learned to love the DMV area where I did my undergrad and got my Master's degrees in Baltimore. After 6 years in the area, I moved to the Midwest where I did medical school at the Mayo Clinic and moved on to do my residency in Emergency Medicine at Northwestern University in Chicago. I finally moved back and am excited to continue learning all things pediatric emergency medicine here at Children's National! My academic interests are in Medical Education with a focus on simulation as well as mentorship for Emergency Medicine residents interested in PEM! Outside of work you can find me going for a walk, planning the next meal to cook, or contemplating how I should brew my coffee.



Nico Dimenstein, MD
NDIMENSTEI@childrensnational.org
 Undergrad: Iowa State University
 Graduate School: Johns Hopkins

Med School: University of Iowa
 Residency: University of Washington

Hey, I'm Nico Dimenstein (he/him). I was born and raised in Des Moines, IA the son of Belarusian immigrants. I attended college at Iowa State and med school at the University of Iowa, with a brief trip to the east coast for an MPH at Hopkins during medical school. Afterwards, I moved to the west coast for Pediatrics residency at University of Washington / Seattle Children's. I'm excited to be back on the east coast, where all my family now lives.

Professionally, I am interested in language equity and LGBTQ+ health, as well as advocacy. Personally, I enjoy spending time with my partner and our French bulldog; Wall-e, weightlifting, ultimate frisbee, water polo, attending concerts, and being outdoors with friends, whether that's hiking or at a brewery triathlon.



Mickey Emmanuel, MD
memmanuel3@childrensnational.org
 Undergrad: University of Florida
 Residency: Children's National

Med School: University of Florida

I was born in Kerala, India and moved to NJ when I was 7 and have spent most of my life growing up in Florida! DC is now my home away from home after doing residency here and now so happy to stay here for fellowship! Could not ask for a more supportive and fun group of people to do fellowship with and learn from! I'm excited to contribute towards health disparities research and advocacy as it relates to immigrant communities and the diverse community in DC. Outside of the hospital, I love going for long walks/bikes around the city, trying out new hole in the wall food spots and trying to keep my plants alive in my studio apartment. I have 5 different appliances to make coffee and am willing to share.



Kala Frye-Bourque, MD
kfryebourq@childrensnational.org
 Undergrad: University of New Hampshire
 Residency: Johns Hopkins Children's Center

Med School: Central Michigan University

I am a native New Hampshireer from a small town called Northwood (yes, it is truly in the woods!) and I spent most of my life there until I moved out to Michigan for medical school then on to Baltimore for residency. My husband and I grew up playing ice hockey together and became high school sweethearts, he's been following me on my medical journey ever since! I have two kids, both born during residency, who keep me busy outside of the hospital. We live outside the city in Silver Spring but it's an easy 20-minute commute! My academic interests include Childhood Safety (particularly safe sleep education and resources) and medical education (I love working with all different types of learners and will be applying for the certificate program for medical education through GW).

While I grew up in the middle of nowhere, we are truly loving DC, and I couldn't ask for a better group of colleagues to work with!



Jessica Hippolyte, MD MPH
jhippolyte1@childrensnational.org
 Undergrad: Cornell University
 Residency: Children's National

Med School: The Ohio State University

I'm a New York native and frequently catch the Amtrak to head home and see family and friends but I absolutely LOVE living in DC! I took a detour to the mid west for medical school and am still a huge Buckeye fan (OH-IO) but was so happy to come back to the east coast for residency and am thrilled to still be here for fellowship. Children's National is an amazing institution dedicated to serving its community and with my academic interests in health disparities, advocacy, policy, as well as diversity & equity work, I knew this was where I needed to be! I have lived in Columbia Heights (~5 min from hospital) for the last 4 years and love my proximity to 14th street/U street area. In my spare time I love being outdoors, spending time with friends/family, traveling, and hitting as many rooftops/happy hours/brunches as possible



Brandon Ho, MD

bho2@childrensnational.org

Undergrad: University of Texas at Austin

Residency: Children's National Hospital

Med School: Baylor College of Medicine

Hey Y'all, I'm originally from Texas and moved to DC for residency. After residency, I completed an urgent care fellowship and worked as an urgent care physician at PM Pediatrics for a year. Now, I am thrilled to be returning to Children's National as a PEM fellow! Children's is a phenomenal place to train with its strong emphasis on education, research, and community engagement! I have found incredible support in fostering my interests in food insecurity, social determinants of health, and medical education. My wife is a first year critical care fellow at the NIH and we recently adopted a (dumb) dog, Dan! We have absolutely loved living in DC for the last four years. My quest has been to try every great restaurant in DC so please ask me for recommendations!



Brandon Kappy, MD

bkappy@childrensnational.org

Undergrad: University of Michigan

Residency: Cincinnati Children's

Med School: Harvard

Though I've spent the past decade in Boston and then Cincinnati, I'm originally from Michigan, growing up in the suburbs of Detroit and attending the University of Michigan (go blue!). I've always been interested in government, politics, and policy, obtaining a Masters in Public Policy with my MD. I'm so excited to be at Children's National for fellowship, being able to work alongside clinicians and policymakers that make a difference on both a local and national level. My other academic interests include disaster preparedness, cost effectiveness research, and medical innovation. When not in the ED, I love hiking, traveling, playing games, watching pretty much every tv show, and eating at new restaurants! DC's restaurants and international markets are fantastic, and my fiancé and I can't wait to continue trying new places!



Hannah Kotler, MD

hkotler@childrensnational.org

Undergrad: Bucknell

Residency: Children's National

Med School: University of Connecticut

I grew up in central Connecticut, but this is now my sixth year in this city, and I think it's the best place to live and work. My now-husband and I couples-matched in DC as residents (now he's an adult infectious disease fellow). After residency, I worked for a year as a general pediatrician in our emergency department, and now I'm one of the second-year fellows. My academic interests include communication with families of children with life-limiting diseases, febrile infants, and Medical Education/curriculum development. Outside of work, I love to cook, visit Rock Creek Park and the Arboretum, and explore the neighborhood with our COVID rescue dog Peaches.



Ilana Lavina, MD

ilavina@childrensnational.org

Undergrad: Yale

Residency: CHOP

Med School: Weill Cornell

Hi everyone! I was born in NYC and grew up in Stony Brook which is on Long Island, NY. After a short trip across the Long Island Sound for college I then moved to NYC for med school. I met my husband two days after my college graduation while shopping in Wal-Mart and we've been making our way down the East Coast ever since, first to Philly for my residency and now to DC. We bought a house in Hyattsville, MD because it was close to some friends of ours, and we absolutely love living there! My academic interests include health equity and advocacy for children in foster care and survivors of trafficking. Outside of work I love spending time with my nephew and little cousins, playing board games and Sudoku puzzles, binge watching TV and trying new restaurants (especially buffets!).



Christina Rojas, MD
crojas2@childrensnational.org
 Undergrad: Rice University Med School: University of Illinois at Chicago
 Residency: Children's Hospital of Philadelphia

I was born and raised just outside of Chicago, but have been lucky enough to spend time in a few major cities since then (Houston > back to Chicago > Philadelphia). My husband and I are thrilled to now be settled in the best city of them all - DC! We love exploring and adventuring with our mischievous COVID puppy – a mini goldendoodle named Penny. My primary academic interests center on improving care and communication for patients and families who prefer languages other than English. Outside of work, you can find me at yoga, watching the latest season of the Bachelorette (or Love Island, anyone?!), reading lots of books, or on a long family walk by the monuments and museums.



Alicia Rolin, MD
arolin@childrensnational.org
 Undergrad: McGill University Med School: Brown University
 Residency: University of Michigan

My family moved to the US right before I was born, and I spent much of my childhood flying back and forth between Brussels and New York. As an adult, I have continued traveling and have moved from city to city more times than I can count. DC is my first repeat city and I am very glad to be back in the capital after 10 years of being away! My clinical interests include adolescent health, health disparities, and working in resource-limited communities (particularly right here in the US). Outside of work, you can typically find me biking, hiking, or stalking all the adorable pups at the dog park.



Jasmine Thomas, MD, MPH
jthomas1@childrensnational.org
 Undergrad: University of Central Florida Med School: University of Miami
 Residency: University of Chicago

I am from South Florida, but a Caribbean girl at heart -- my family is from the small island of Dominica. I completed residency in Chicago and now ready to embark on this new path into Pediatric Emergency Medicine in DC. I am extremely passionate about the social determinants of health and integrating advocacy into clinical practice. In my free time I love to spend time with friends and try new things! Looking forward to immersing myself into this experience and exploring all what DC has to offer.



Jessica Williams, MD
jwilliam19@childrensnational.org
 Undergrad: Trinity College (CT) Med School: The Ohio State University College of Medicine
 Residency: Nationwide Children's Hospital

I'm originally from Boston, MA (Dorchester) and after med school and residency in Columbus, OH, I am so excited to be joining the Children's National team! I was attracted to the rich culture of the DMV and the large and busy ER where I anticipate learning a lot! I love to salsa and bachata dance and I have plant babies (lots of them). I can't wait to get started on my journey to becoming a PEM!

Staff



Hilda L. Rojas
hrojas@childrensnational.org
 ED Program Operations Lead

Hilda has been with Children's since January of 1990 and joined the ED in 1997, always embracing the chaos with a smile. Originally from Venezuela, she initially visited Washington for a vacation but soon fell in love with the country, deciding to make it her home. With two daughters, Hilda proudly carries the title of grandmother to five amazing grandchildren, ages 21 to 2. Hilda enjoys weekend outings, movies, swimming and traveling. Fun fact: worked for about 3 years as a tip line operator for America's Most Wanted.

Fellowship Publications Through 2022

Year	Fellow	Research Mentor(s)	Publications
2014	Priya Gopwani	Pavan Zaveri	<ol style="list-style-type: none"> Gopwani PR, Patel S, Greene E, Chapman J. A Module-Based Pediatric ECG Curriculum to Improving Accuracy of ECG Interpretation by Pediatric Emergency Medicine Providers. <i>MedEdPORTAL</i>; 2014. www.mededportal.org/publication/9779 Gopwani PR, Brown KM, Quinn MJ, Dorosz EJ, Chamberlain JM. SOUND: a structured handoff tool improves patient handoffs in a pediatric emergency department. <i>Pediatr Emerg Care</i>. 2015 Feb;31(2):83-7.
	Naomi Hughes	Kathy Brown	<ol style="list-style-type: none"> Hughes NT, Burd RS, Teach SJ. Damage control resuscitation: permissive hypotension and massive transfusion protocols. <i>Pediatr Emerg Care</i>. 2014 Sep;30(9):651-6; quiz 657-8 Walls TA, Hughes NT, Mullan PC, Chamberlain JM, Brown K. Improving Pediatric Asthma Outcomes in a Community Emergency Department. <i>Pediatrics</i>. 2017 Jan;139(1). Cohen JS, Hughes N, Tat S, Chamberlain JM, Teach SJ, Boniface K. The Utility of Bedside Lung Ultrasound Findings in Bronchiolitis. <i>Pediatr Emerg Care</i>. 2017 Feb;33(2):97-100.
	Sonny Tat	Randy Burd	<ol style="list-style-type: none"> Tat ST, Mejia MJ, Freishtat RJ. Imaging, clearance, and controversies in pediatric cervical spine trauma. <i>Pediatr Emerg Care</i>. 2014 Dec;30(12):911-5; quiz 916-8. Cohen JS, Hughes N, Tat S, Chamberlain JM, Teach SJ, Boniface K. The Utility of Bedside Lung Ultrasound Findings in Bronchiolitis. <i>Pediatr Emerg Care</i>. 2017 Feb;33(2):97-100.
2015	Erin Augustine	Jim Chamberlain	<ol style="list-style-type: none"> Augustine EM, Kreling BA, Chamberlain JM. Caretakers' Perspectives on Return Pediatric Emergency Department Visits: A Qualitative Analysis of Focus Groups. <i>Pediatr Emerg Care</i>. 2016 Sep;32(9):594-8. Augustine EM, Bekker TD, Goel A, Breslin KA, Chamberlain JM. A Survey of Return Visits to the

			Pediatric Emergency Department: The Caretakers' Perspective. <i>Pediatr Emerg Care</i> . 2018 Jan;34(1):27-32.
	Kaynan Doctor	Deena Berkowitz, Kristen Breslin	<ol style="list-style-type: none"> 1. Doctor K, Roback MG, Teach SJ. An update on pediatric hospital- based sedation. <i>Curr Opin Pediatr</i>. 2013 Jun;25(3):310-6. 2. Doctor K, Cohen JS. Diagnosis of an Intraventricular Cyst Using Point-of-Care Cranial Ultrasound in the Pediatric Emergency Department. <i>Pediatr Emerg Care</i>. 2017 Mar;33(3):216-218. 3. Doctor K, Breslin K, Chamberlain JM, Berkowitz D. Practice Pattern Variation in Test Ordering for Low-Acuity Pediatric Emergency Department Patients. <i>Pediatr Emerg Care</i>. 2018 Oct 17.
	Fareed Saleh	Jim Chamberlain, Kristen Breslin, Paul Mullen	<ol style="list-style-type: none"> 1. Saleh F, Greene EA, Mathison D. Evaluation and management of atrioventricular block in children. <i>Curr Opin Pediatr</i>. 2014 Jun;26(3):279-85. 2. Saleh F, Breslin K, Mullan PC, Tillett Z, Chamberlain JM. Identifying Nonprovider Factors Affecting Pediatric Emergency Medicine Provider Efficiency. <i>Pediatr Emerg Care</i>. 2020 Feb;36(2):e50-e55.
	Rosemary Thomas-Mohtat	Jo Cohen, Pavan Zaveri	1. Thomas-Mohtat R, Sable C, Breslin K, Weinberg J, Prasad A, Zinns L, Cohen JS. Interpretation Errors in Focused Cardiac Ultrasound by Novice Pediatric Emergency Medicine Fellow Sonologists. <i>Crit Ultrasound J</i> . 2018 Dec; 10(1):33.
2016	Katie Donnelly	Karen O'Connell, Kristen Breslin	1. Donnelly KA, Breslin K, O'Connell KJ. Patients at High Risk of Intervention for Pediatric Traumatic Liver Injury. <i>Pediatr Emerg Care</i> . 2020 Jul;36(7):e373-e377.
	Lenore Jarvis	Monika Goyal	<ol style="list-style-type: none"> 1. Herrmann LE, Jarvis L, Bhansali P, Zaveri P. Promoting interdisciplinary shared mental models. <i>Clin Teach</i>. 2018 Mar 30. 2. Jarvis LR, Breslin KA, Badolato GM, Chamberlain JM, Goyal MK. Postpartum Depression Screening and Referral in a Pediatric Emergency Department. <i>Pediatr Emerg Care</i>. 2020 Nov;36(11):e626-e631.
	Mordechai Raskas	Dave Mathison, Shilpa Patel	1. Lehmann CU; Council on Clinical Information Technology. Pediatric aspects of inpatient health information technology systems. <i>Pediatrics</i> . 2015 Mar;135(3):e756-68. PMID: 25713282.

	Jason Woods	Paul Mullan, Pavan Zaveri	<ol style="list-style-type: none"> 1. Woods JM, Scott HF, Zaveri PP. Creating Consensus Educational Goals for Pediatric Sepsis via Multicenter Modified Delphi. <i>AEM Educ Train</i>. 2018 Sep 17;2(4):254-258. 2. Woods JM, Scott HF, Mullan PC, et al. Using an eLearning Module to Facilitate Sepsis Knowledge Acquisition Across Multiple Institutions and Learner Disciplines. <i>Pediatr Emerg Care</i>. 2021 Dec 1; 37(12):e1070-e1074.
2017	Jaclyn Kline	Monika Goyal	<ol style="list-style-type: none"> 1. Kline JN, Whitehead MT, Atabaki SM. Acute-Onset Flaccid Hemiparesis in a 9-Year-Old Boy With Presumed Enteroviral Infection. <i>Pediatr Emerg Care</i>. 2018;34(9):e171-e174. 2. Kline JN, Badolato GM, Goyal MK. Trends in Pediatric Poisoning- Related Emergency Department Visits: 2001-2011. <i>Pediatr Emerg Care</i>. 2021 Jan 1; 37(1):e7-e12.
	Jamie Martin	Dave Mathison, Paul Mullan, Kristen Breslin	<ol style="list-style-type: none"> 1. Martin JF, Mathison DJ, Mullan PC, Otero HJ. Secondary imaging for suspected appendicitis after equivocal ultrasound: time to disposition of MRI compared to CT. <i>Emerg Radiol</i>. 2018 Apr;25(2):161-168. 2. Martin J, Lindgren C. Infectious Endocarditis Prophylaxis in Children. <i>Pediatr Emerg Care</i>. 2018 Oct;34(10):743-746.
	Astrid Sarvis	Dave Mathison, Shilpa Patel	<ol style="list-style-type: none"> 1. Sarvis AB, Sarvis RC, Schnadower D, Chamberlain JM, Mathison DJ. Admit v. Discharge-A Cost Analysis of Infants 29-60 Days Old with Febrile Urinary Tract Infection at Low Risk for Bacteremia. <i>Acad Pediatr</i>. 2019 Mar; 19(2): 209-215. Epub 2018 Nov 8.
	Evan Sherman	Moh Saidinejad, Monika Goyal	Publication status- submitted, not published.
2018	Jeremy Root	Jamil Madati, Kristen Breslin, Shireen Atabaki	<ol style="list-style-type: none"> 1. Root JM, Abo A, Cohen J. Point-of-Care Ultrasound Evaluation of Severe Renal Trauma in an Adolescent. <i>Pediatr Emerg Care</i>. 2018 Apr;34(4):286-287. 2. Root JM, Fong J, Badolato G, Madati PJ. Rest-Based Concussion Management of Pediatric Emergency Medicine Providers. <i>Pediatr Emerg Care</i>. 2021 Oct 1; 37(10):e631-635. 3. Root JM, Sady MD, Gai J, Vaughan CG, Madati PJ. Effect of Cognitive and Physical Rest on Persistent

			<p>Postconcussive Symptoms following a Pediatric Head Injury. <i>J Pediatr</i>. 2020 Dec;</p> <p>4. 227:184-190.e4. Epub 2020 Jul 21. PMID: 32702425.</p>
	Caleb Ward	Joelle Simpson, Kathy Brown	<p>1. Ward CE, Chapman JI. Chikungunya in Children: A Clinical Review. <i>Pediatr Emerg Care</i>. 2018 Jul;34(7):510-515</p> <p>2. Ward CE, Badolato G, Breslin K, Brown K, Simpson J. Evaluation of a Selective Prehospital Pediatric Spinal Protection Protocol. <i>Prehosp Emerg Care</i>. 2019; 23(6):862-869.</p>
	Sam Zhao	Ellen Goldman, Pavan Zaveri	<p>1. Zhao X, Dughly O, Simpson J. Decontamination of the pediatric patient. <i>Curr Opin Pediatr</i>. 2016 Jun;28(3):305-9.</p> <p>2. Zhao X, Delaney M, Breslin K, Chamberlain JM, Rubio EI, Reilly BK, Cohen JS. Impact of Transcervical Ultrasound for the Diagnosis of Pediatric Peritonsillar Abscesses on Emergency Department Performance Measures. <i>J Ultrasound Med</i>. 2020 Apr;39(4):715- 720. Epub 2019 Nov 11. PMID: 31713253.</p> <p>3. Zhao X, Goldman E, Banani T, Kline K, Brown K, Lee J, Jurjus RA. The process of curricular integration and its effects on anatomical knowledge retention. <i>Clin Anat</i>. 2020 Sep;33(6):960-968. doi: 10.1002/ca.23632. Epub 2020 Jun 26. PMID: 32449191.</p>
2019	Rachael Batabyal	Rob Freishtat, Ioannis Koutroulis	<p>1. Batabyal RA, Zhou JJ, Howell JD, Alba L, Lee HH, Furuya EY, Stockwell MS, Calfee DP, Brown CE, Craan A, Saiman L. Impact of New York State Influenza Mandate on Influenza-Like Illness, Acute Respiratory Illness, and Confirmed Influenza in Healthcare Personnel. <i>Infect Control Hosp Epidemiol</i>. 2017 Nov;38(11):1361- 1363.</p> <p>2. Batabyal, R., & O'Connell, K. Improving Management of Severe Asthma: BIPAP and Beyond. <i>Clinical Pediatric Emergency Medicine</i>, 2018 March;19(1), 69-75.</p> <p>3. Koutroulis I, Batabyal R, McNamara B, Ledda M, Hoptay C, Freishtat RJ. Sepsis Immunometabolism: From Defining Sepsis to Understanding How Energy Production Affects Immune Response. <i>Crit Care Explor</i>. 2019;1(11):e0061. Published 2019 Nov 14.</p>
	Nancy Gilchrist	Monika Goyal, Jo Cohen	<p>1. Gilchrist N, Simpson JN. Pediatric disaster preparedness:</p>

			identifying challenges and opportunities for emergency department planning. <i>Curr Opin Pediatr.</i> 2019;31(3):306-311.
	Monica Prieto	Kathy Brown	1. Prieto M, Rucker A, Payne AS. Increasing Metered Dose Inhaler Use for Acute Asthma Exacerbations in the Pediatric Emergency Department: A Quality Improvement Challenge. <i>Clinical Pediatric Emergency Medicine</i> , 2018; 19(1): 55-60.
	Haroon Shaukat	Jo Cohen, Kristen Breslin	1. Shaukat H, O'Mara J, Neier M. A Pediatric Case of Persistent Thrombocytopenia in a Patient Who Developed All. <i>J Pediatr Hematol Oncol.</i> 2017 Nov;39(8):e512-e514. 2. DesPain AW, Chapman J, Shaukat H. Oculocardiac Reflex in a Pediatric Trauma Patient. <i>Pediatr Emerg Care.</i> 2018 Feb 28. [Epub ahead of print] PubMed PMID: 29489611. 3. Shaukat H, Neway B, Breslin K, Watson A, Poe K, Boniface K, Cohen JS. Utility of the DIVA score for experienced emergency department technicians. <i>Br J Nurs.</i> 2020 Jan 23;29(2):S35-S40.
2020	Amie Cahill	Jo Cohen, Kristen Breslin	1. Cahill AA, Cohen J. Improving Evidence Based Bronchiolitis Care. <i>Clin Pediatr Emerg Med.</i> 2018 Mar;19(1):33-39.
	Mike Hrdy	Monika Goyal, Jo Cohen	1. Cassara M, Schertzer K, Falk MJ, et al. Applying Educational Theory and Best Practices to Solve Common Challenges of Simulation-based Procedural Training in Emergency Medicine. <i>AEM Educ Train.</i> 2019;4(Suppl 1):S22-S39. Published 2019 Dec 27. doi:10.1002/aet2.10418 2. Nadir NA, Kim J, Cassara M, Hrdy M, Zaveri P, Wong AH, Ray J, Strother C, Falk M. Simulation-based emergency medicine education in the era of physical distancing. <i>AEM Educ Train.</i> 2021 Mar 13;5(3):e10586. doi: 10.1002/aet2.10586. Epub ahead of print. PMID: 33786408; PMCID: PMC7995220. 3. Cohen JS, Agbim C, Hrdy M, Mottla ME, Goyal MK, Breslin K. Epinephrine autoinjector prescription filling after pediatric emergency department discharge. <i>Allergy Asthma Proc.</i> 2021 Mar 1;42(2):142-146. 4. Hrdy M, Goyal MK, Badolato GM, Cohen JS. Frequency of Opioid Prescription Filling After Discharge from the Pediatric Emergency Department. <i>J Emerg Med.</i> 2022 Jun; 62(6):775-782. Epub 2022 Mar 29.

	Sarah Isbey	Asha Payne, Jaclyn Kline	<ol style="list-style-type: none"> 1. Bruns LA, Isbey S, Tanverdi M, Kane I. Late-Onset Vitamin K Deficiency Presenting as Scrotal Bruising and Mediastinal Mass. <i>Pediatr Emerg Care</i>. 2019 Oct;35(10):e192-e193. 2. Isbey S, Badolato G, Kline J. Pediatric Emergency Department Discharge Instructions for Spanish-Speaking Families: Are We Getting It Right? <i>Pediatr Emerg Care</i>. 2022 Feb 1; 38(2):e867-870.
	Hilary Ong	Shilpa Patel, Kristen Breslin	<ol style="list-style-type: none"> 1. Badarch J, Harding J, Dickinson-Craig E, Azen C, Ong H, Hunter S, Pannaraj PS, Szepesi B, Sereenendorj T, Davaa S, Ochir C, Warburton D, Readhead C. Winter Air Pollution from Domestic Coal Fired Heating in Ulaanbaatar, Mongolia, is Strongly Associated with a Major Cyclic Decrease in Successful Fecundity. <i>Int J Environ Res Public Health</i>. 2021 Mar 9;18(5):2750 2. Patel R, Samiee-Zafarghandy S, Ziesenitz V, Fox ER, Van Den Anker J, Ong H, Mazer-Amirshahi M. US drug shortages compared to the World Health Organization’s Model List of Essential Medicines for Children: A cross-sectional study. <i>Am J Health Syst Pharm</i>. 2022 Aug 1:zxac210. Epub ahead of print. 3. Richard KNZ, Cohen JS, Chamberlain JM, Ong H, Dwyer M, Perritt A, McKinley KW. Validation of “Personal Protective Equipment Conversation Strategies Tool” to Predict Consumption of N95s, Facemasks, and Gowns during Pandemic-Related Shortages. <i>Comput Inform Nurs</i>. 2022 Jan 1; 40(1):28-34.
2021	Chisom Agbim	Jaclyn Kline, Shilpa Patel	<ol style="list-style-type: none"> 1. Cohen JS, Agbim C, Hrdy M, Mottla ME, Goyal MK, Breslin K. Epinephrine autoinjector prescription filling after pediatric emergency department discharge. <i>Allergy Asthma Proc</i>. 2021 Mar 1;42(2):142-146. 2. Agbim C, Patel SJ, Brown K, Kline J. Practicing What We Teach: Increasing Inhaler Use for Mild Asthma in the Pediatric Emergency Department. <i>J Healthc Qual</i>. 2022 Jan-Feb 01;44(1):40-49.
	Angelica DesPain	Kristen Breslin, Ioannis Koutroulis, Jim Chamberlain	<ol style="list-style-type: none"> 1. DesPain AW, Chapman J, Shaukat H. Oculocardiac Reflex in a Pediatric Trauma Patient. <i>Pediatr Emerg Care</i>. 2020 Jul;36(7):e399-e401 2. Farrell PR, Hornung L, Farmer P, DesPain AW, Kim E, Pearman R, Neway B, Serrette A, Sehgal S, Heubi JE, Lin TK, Nathan JD, Vitale

			<p>DS, Abu-El-Haija M. Who's at Risk? A Prognostic Model for Severity Prediction in Pediatric Acute Pancreatitis. <i>J Pediatr Gastroenterol Nutr.</i> 2020 Oct;71(4):536-542. PMID: 32541203.</p> <p>3. DesPain AW, Gutman CK, Cruz AT, Aronson PL, Chamberlain JM, Chang TP, Florin TA, Kaplan RL, Nigrovic LE, Pruitt CM, Thompson AD, Gonzalez VM, Mistry RD. Research environment and resources to support pediatric emergency medicine fellow research. <i>AEM Educ Train.</i> 2021 Mar 9;5(3):e10585.</p> <p>4. Despain AW, Pearman R, Hamdy R, Badolato G, Campos J, Breslin K. Impact of CSF meningitis/encephalitis panel on resources use for febrile well-appearing infants. <i>Hospital Pediatrics.</i> In press.</p>
	Mary Beth Howard	Lenore Jarvis, Katie Donnelly, Sadiqa Kendi	<p>1. Kendi S, Howard MB, Mohamed MA, Eaddy S, Chamberlain JM. So much nuance: A qualitative analysis of parental perspectives on child passenger safety. <i>Traffic Inj Prev.</i> 2021;22(3):224-229.Epub 2021 Mar 4. PMID: 33661063.</p> <p>2. Howard MB, Basu S, Sherwin E, Cohen JS. Triple threat: New presentation with diabetic ketoacidosis, COVID-19, and cardiac arrhythmias. <i>Am J Emerg Med.</i> 2021 Apr 19:S0735- 6757(21)00331-4.Epub ahead of print. PMID: 33895040; PMCID: PMC8053600.</p> <p>3. Howard MB, McCollum N, Alberto EC, Kotler H, Mottla ME, Tiusaba L, Keller S, Marsic I, Sarcevic A, Burd RS, O'Connell KJ. Association of Ventilation during Initial Trauma Resuscitation for Traumatic Brain Injury and Post-Traumatic Outcomes: A Systematic Review. <i>PreHosp Disaster Med.</i> 2021 Aug;36(4):460- 465.</p> <p>4. Howard MB, Jarvis LR, Badolato GM, Parrish BT, Donnelly KA. Variations in Safe Sleep Practices and Beliefs: Knowledge is not Enough. <i>Matern Child Health J.</i> 2022 May; 26 (5): 1059-1066.</p> <p>5. Howard MB, Guse S. Liquid Nicotine, E-Cigarettes, and Vaping: Information for the Pediatric Emergency Medicine Provider. <i>Pediatr Emerg Care.</i> 2022 Aug 1; 38(8):399-403.</p>

	Nathaniel Jones	Monika Goyal, Jo Cohen	<ol style="list-style-type: none"> 1. Jones NK, Badolato GM, Boyle MD, Goyal MK. Racial/ethnic disparities in management of acute gastroenteritis in a pediatric emergency department. <i>Acad Emerg Med.</i> 2021 Sep; 28(9):1067- 1069. 2. Morrison S, Jones N, Koutroulis I, Chamberlain J. A Prospective Look at Career Aspirations Among Pediatric Emergency Medicine Trainees. <i>Pediatr Emerg Care.</i> 2021 Dec 1; 37(12):e974-e976. 3. Jones, N, Cohen, J, Chapman, JI. Empowering High School Students to Address Racial Disparities During the COVID-19 Pandemic. <i>Pediatrics.</i> 2022 Jan 1;149(1):e2021050483. PMID: 34904155.
	Jillian Nickerson (2yr EM-PEM)	Sam Zhao, Katie Donnelly	<ol style="list-style-type: none"> 1. Nickerson, JE, Webb T, Boehm L, Neher J, Wong L, LaMonica J, Bentley S. Difficult Delivery and Neonatal Resuscitation: A Novel Simulation for Emergency Medicine Residents. <i>West J Emerg Med.</i> 2019 Dec 9;21(1):102-107.
2022	Dennis Ren		<ol style="list-style-type: none"> 1. Ren DM, Abrams A, Banigan M, Batabyal R, Chamberlain JM, Garrow A, Izem R, Nicholson L, Ottolini M, Patterson M, Sarnacki R, Walsh HA, Zaveri P. Evaluation of Communication and Safety Behaviors During Hospital-Wide Code Response Simulation. <i>Simul Healthc.</i> 2022 Feb 1;17(1):e45-e50. FOAMed
	Nichole McCollum	Jaclyn Kline	<ol style="list-style-type: none"> 1. McCollum N, Guse S. Neck Trauma: Cervical Spine, Seatbelt Sign, and Penetrating Palate Injuries. <i>Emerg Med Clin North Am.</i> 2021 Aug;39(3):573-588. 2. Howard MB, McCollum N, Alberto EC, Kotler H, Mottla ME, Tiusaba L, Keller S, Marsic I, Sarcevic A, Burd RS, O'Connell KJ. Association of Ventilation during Initial Trauma Resuscitation for Traumatic Brain Injury and Post-Traumatic Outcomes: A Systematic Review. <i>Prehosp Disaster Med.</i> 2021 Aug;36(4):460-465. 3. Kline JN, Isbey SC, McCollum NL, Falk MJ, Gutierrez CE, Guse SE, Harahsheh AS, Brown KM, Chamberlain JM, Breslin KA. Identifying pediatric patients with multisystem inflammatory syndrome in children presenting to a pediatric emergency department. <i>Am J Emerg Med.</i> 2022 Jan;51:69-75.
	Brian Lee	J Chamberlain, Emily Willner, Sam Zhao	<ol style="list-style-type: none"> 1. Shen BH, Aoyama B, & Lee BE. Inpatient Albuterol Spacing as an Indicator of Discharge Readiness." <i>J Asthma.</i> 2022 Jan:1-6.

			2. Lee BE, Dham N, Khan S, Chen L, McCarter RJ, Chamberlain J. "Risk Factors for Myocarditis and Dilated Cardiomyopathy in Children Presenting to the Emergency Department- manuscript
	Marci Fornari		<p>1. Fornari MJ, Lawson SL. Pediatric Blunt Abdominal Trauma and Point-of-Care Ultrasound. <i>Pediatr Emerg Care</i>. 2021 Dec 1;37(12):624-629.</p> <p>2. Fornari M, Cohen J, Birdsong R. AIDS Presenting in an Adolescent Male With Persistent Conjunctivitis and Eye Pain. <i>J Adolesc Health</i>. 2021 Apr;68(4):827-829.</p> <p>3. Donnelly KA, Rucker A, Boyle MD, Fornari MJ, Badolato GM, Goyal MK. Experiencing Bullying Is Associated With Firearm Access, Weapon Carriage, Depression, Marijuana Use, and Justice Involvement in Adolescents. <i>Pediatr Emerg Care</i>. 2022 Feb 1;38(2):e918-e923.</p> <p>Fornari MJ, Badolato GM, Rao K, Goyal MK, McCarter R, Donnelly KA. Violent Injury as a Predictor of Subsequent Assault-Related ED Visits in Adolescents- manuscript</p>

SAMPLE CONTRACT



Dear Dr. XXX:

We are pleased to offer you a fellowship in Emergency Medicine at Children's National for a period to commence 7/1/202X and terminate 6/30/202X. Your annual salary as a PGYX will be \$XXXX for full-time employment with benefits.

Your responsibilities and those of the institution are outlined below.

I. Children's National Responsibilities:

A. GME Program:

Children's National sponsors a Graduate Medical Education Program, which ensures a suitable environment for educational programs to meet the Accreditation Council for Graduate Medical Education ("ACGME") institutional requirements. Children's National does not require fellows to sign a non-competitive guarantee.

B. Compensation:

Fellows are paid on a biweekly basis. Salaries are subject to all applicable deductions required by DC and federal law, and other deductions as authorized by the fellow.

C. Professional Liability Insurance:

Children's National will provide professional liability insurance coverage for the authorized activities of fellows under this agreement. The professional liability coverage provides legal defense and protection against claims or suits reported or filed during and after the completion of the training program if the alleged acts or omissions of the fellow are within the scope of the education program and occurred during the period of the fellow's employment. Insurance coverage does not extend to moonlighting activities. Fellow must be approved in credentialing process, at Children's National's sole discretion in order to be insured.

D. Leaves of Absence:

Vacation Leave: Fellows will receive twenty (20) days of paid vacation time per training year which will be front loaded by Human Resources. Vacation must be requested by the Fellow and approved by the Program Director and/or Division Chief. Vacation balances do not automatically carry forward into the next contract year, and there is no payout for unused vacation leave at the end of the training period.

Sick Leave: Fellows will accrue twelve (12) days of sick leave per year, including 7 days of for the Accrued Sick and Safe Leave Act (ASSLA), as outlined in the Children's National policy and procedure on Sick Leave (F-06, F-06P) that are available on the Intranet

Parental Leave: Eligible Fellows will receive up to 12 weeks of 100% paid maternity, paternity, or adoption leave, as outlined in the Children's National policy and procedure on Paid Parental Leave (G-12, G-12P) that are available on the Intranet.

E. Benefits

The 2023 Benefits Guide available at MedHub summarizes the benefits in which the fellow may participate including:

- Health, dental, vision
- Flexible spending accounts
- Life Insurance
- Disability insurance
- Employee Assistance Program

- Back up dependent child and elder care

F. Physician Impairment & Counseling Services

Information about physician impairment, including substance abuse, counseling and other support services is contained in the Children's National Trainee Impairment Policy, available on the Children's National GME website found here: <https://childrensnational.org/healthcare-providers/healthcare-education/graduate-medical-education/policies>

G. Harassment

Children's National affirms its commitment to promote and maintain a work environment free of harassment and discrimination based on color, race, religion, national origin, age, sex, sexual orientation, disability, or any other protected characteristic, under Title VII of the Civil Rights Act of 1964. Information about sexual and other forms of harassment is contained in the Children's National Harassment Policy which can be found in the Policy Portal on the Intranet.

H. Accommodation for Disabilities:

Children's National will address any request for accommodation for disabilities in accordance with the provisions of the Americans with Disabilities Act (ADA) and Children's National's ADA Policy and Procedures.

I. Program Reduction & Closure

Children's National Program Reduction and Closure Policy for Graduate Medical Education addresses the circumstances of a residency/fellowship closure or reduction.

J. GME Policies:

Information about all GME policies, including work hours, moonlighting, evaluations, due process, physician impairment, sexual harassment, and others referenced in this Agreement are available at the Children's National home page, found here: <https://childrensnational.org/healthcare-providers/healthcare-education/graduate-medical-education/policies>

You agree to always follow these and all other Children's National policies during the term of your Fellowship.

II. Residents' Responsibilities

- A.** Provide the Graduate Medical Education office with all requested credentialing information.
- B.** Comply with all Children's National's immunization, health screening, and drug testing requirements.
- C.** Satisfy all other requirements for employment by Children's National. Should these requirements not be satisfied by the commencement date of this agreement, this agreement will be null and void.
- D.** Comply with each Affiliated Institution requirements and applicable state laws pertaining to the specific Children's National location to which Fellow is assigned.
- E.** Complete all requirements for promotion to the next level of training.
- F.** Review the requirements for specialty board examination and register to take the Boards during the first year of fellowship. Access to information related to eligibility for specialty board examinations may be obtained at the American Board of Pediatrics Website at: <https://www.abp.org>
- G.** Comply with all Children's National policies and procedures, including the Code of Conduct, Compliance Program Policies and Procedures, Bylaws of the Medical Staff of Children's National, Rules and Regulations, and any individual educational and clinical policies and procedures of the training sites to which they are assigned.
- H.** Develop a personal program of learning to foster professional growth, with guidance from Program Director and Teaching Staff.

- I.** Participate fully in the educational and scholarly activities of your program and assume responsibility for teaching and supervising other residents and students as appropriate.
- J.** Participate regularly with and serve on committees and councils whose actions affect education and/or patient care.
- K.** Provide safe and appropriate care for patients, commensurate with your level of education, ability and experience as determined by and under the supervision of the teaching staff.
- L.** Comply with applicable federal laws and the laws of the District of Columbia. Fellows are not permitted to start training at Children's National until they have obtained a full DC license; or applicable DC training license.
- M.** Perform duties under this Agreement during such hours as the Program Director may direct in accordance with Children's National's Program Work Hours and Moonlighting Policies, including reporting to the Program Director or GME Office any work hour violations or concerns.
- N.** Comply with Children's National's Intellectual Property Policy which details, Works of authorship, technical discoveries, inventions, marks or other items of commercial interest created by or resulting from research or investigations conducted by Children's National staff (including employees, faculty members, fellows, residents, consultants, trainees, students, and volunteers) on Children's National time or by anyone utilizing Children's National resources shall become the property of Children's National (or other appropriate Children's National subsidiary and affiliate) or its assignee.

III. Conditions for Reappointment

This agreement applies only to the year indicated above. Reappointment, non-renewal of appointment, or non-promotion shall be determined in accordance with the Children's National's Policies on Conditions for Reappointment and Resident Dismissal and Due Process Hearing procedures.

IV. Termination of Agreement

Children's National reserves the right to terminate this Agreement for cause, which shall include, but is not limited to: 1) any adverse change in applicable external funding; 2) adverse licensure action; 3) serious misconduct; 4) material breach of this Agreement; 5) unsatisfactory performance; or 6) violation of Children's National policies and procedures.

V. Acknowledgement:

I acknowledge receipt of Children's National Graduate Medical Education policies and understand that I am required to read and comply with all such policies. My signature below indicates that I have read, understand and agree to abide by such policies.