

# Implementation of a Social Needs Screening Tool Across Multiple Settings for Children with Asthma

Shayla Stringfield, BS, CHES<sup>1,2</sup>; Taylor Brewer, BS<sup>2</sup>; Rachel Margolis, PhD, LICSW<sup>1,3</sup>; Amanda Jepson, BS<sup>5</sup>; Kavita Parikh, MD, MSHS<sup>5</sup>; Shilpa J. Patel, MD, MPH<sup>1,4</sup>  
<sup>1</sup>IMPACT DC Asthma Clinic; <sup>2</sup>George Washington University School of Medicine and Health Sciences; <sup>3</sup>Center for Translational Research, Children's Research Institute; <sup>4</sup>Division of Emergency Medicine, <sup>5</sup>Division of Hospital Medicine Children's National Health System; Washington, DC

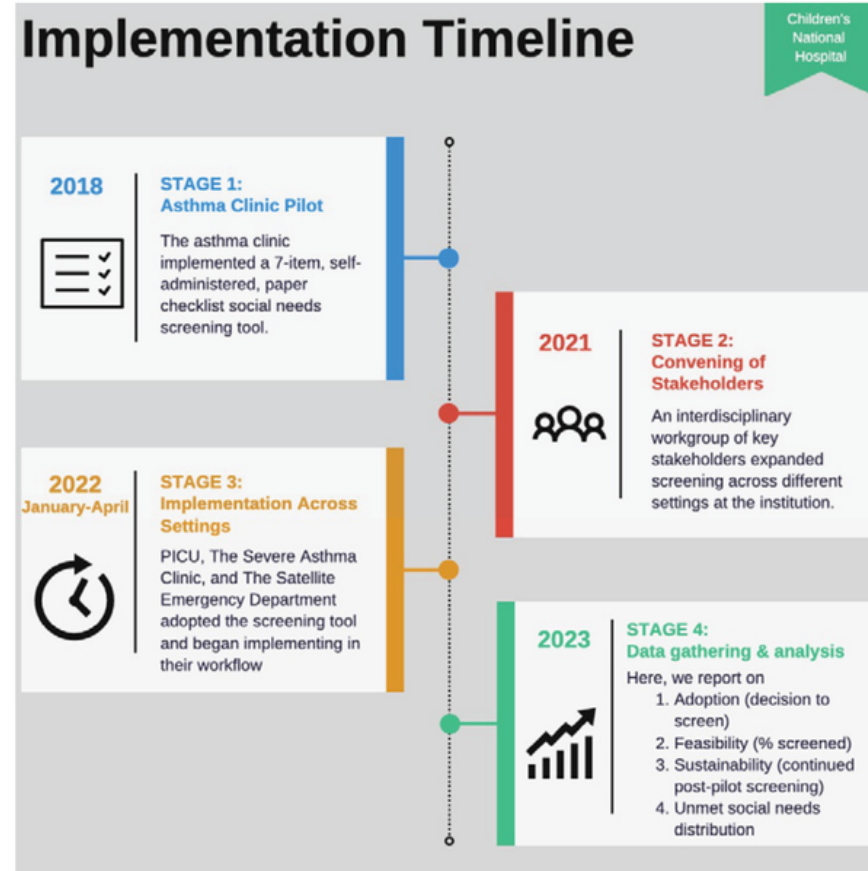
## BACKGROUND

- Social determinants of health contribute to higher rates of asthma morbidity and health disparities in urban populations.
- If feasible, a standardized approach to address social needs across a health system could prove efficient and improve outcomes.

## OBJECTIVES

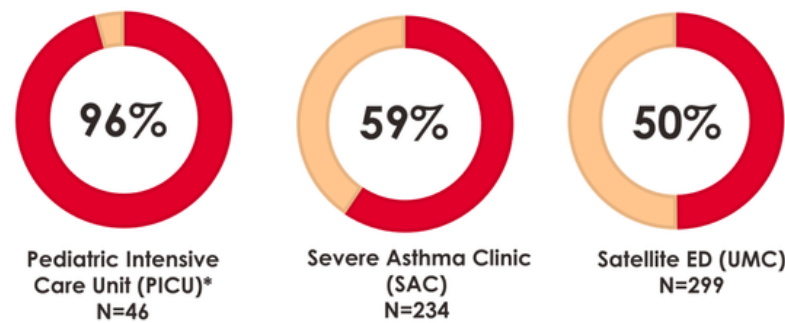
- 1) To **implement** standardized screening for unmet social needs among families with children with asthma
- 2) To **assess** feasibility (proportion screened) of standardized screening across different settings
- 3) To **describe** unmet social needs, indicated by assistance requested on screening tool (Figure 1)

## METHODS



## RESULTS

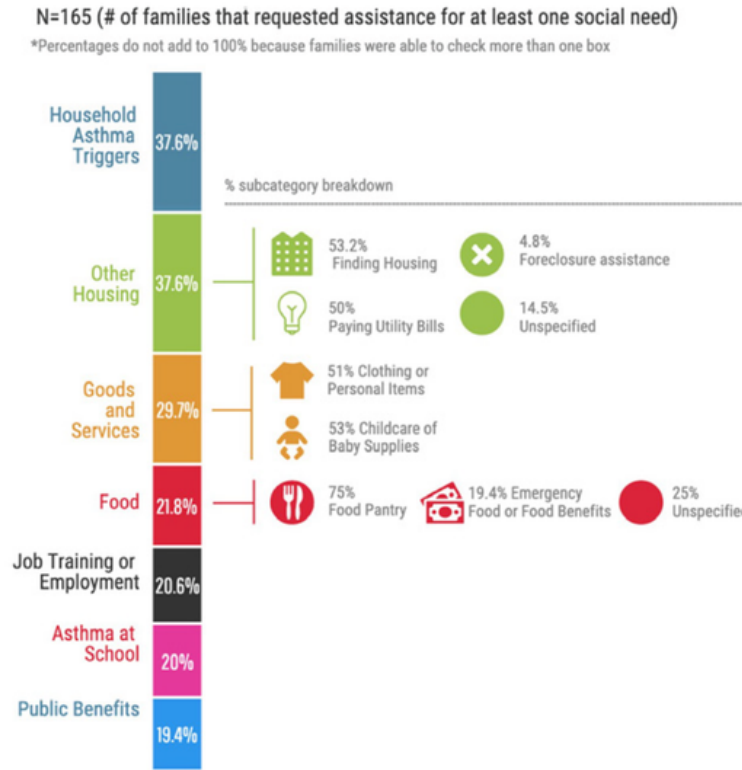
Figure 2: Feasibility, % screened



## RESULTS

- The PICU continued screening following the pilot while the SAC and the ED did not. Across the three locations and asthma clinic, 42% (165/390) of families requested help with ≥1 social need.

Figure 3: Distribution of Unmet Social Needs



## CONCLUSION

Screening was feasible in some locations, more successful in higher risk patients, and overall revealed a high burden of social needs among families of children with asthma across our institution.

## REFERENCES

- Stempel H, Federico MJ, Szeffler SJ. Applying a biopsychosocial model to inner city asthma: Recent approaches to address pediatric asthma health disparities. *Pediatric Respiratory Reviews*. Published online January 1, 2019. doi:10.1016/j.prrv.2019.07.001
- Teach SJ, Crain EF, Quint DM, Hylan ML, Joseph JG. Improved Asthma Outcomes in a High-Morbidity Pediatric Population: Results of an Emergency Department-Based Randomized Clinical Trial. *Arch Pediatr Adolesc Med*. 2006;160(5):535. doi:10.1001/archpedi.160.5.535
- Margolis, R. H. F., Patel, S. J., Krueger, J., Brewer, T., Williams, A., Stringfield, S., Teach, S. J., & Parikh, K. (2023). Association between social needs and asthma control among children evaluated at a single-center high-risk asthma clinic. *The journal of allergy and clinical immunology. In practice*, S2213-2198(23)00286-6. Advance online publication. https://doi.org/10.1016/j.jaip.2023.03.0043.

**IMPACT DC**  
Improving Pediatric Asthma Care in the District of Columbia

IMPACT DC can help family connect with basic resources to stay healthy. Check the boxes below if you would like help with any of the services listed below

	I need help with household asthma issues (dust, mold, pests, unresponsive landlord).	<input type="checkbox"/>
	I need help with school asthma issues (symptoms worsen when at school, lack of asthma accommodations).	<input type="checkbox"/>
	I need help with paying for prescription medications.	<input type="checkbox"/>
	I need help with transportation to appointments.	<input type="checkbox"/>
	I need help with finding job training and employment programs.	<input type="checkbox"/>
	I need help with applying for public benefits: <input type="checkbox"/> Finding Insurance <input type="checkbox"/> SSI, SSDI <input type="checkbox"/> Cash Benefits (TANF)	<input type="checkbox"/>
	I need help with food resources: <input type="checkbox"/> Information on Food Pantries <input type="checkbox"/> Applying for Government Food Benefits (WIC and SNAP) <input type="checkbox"/> Finding Emergency Food	<input type="checkbox"/>
	I need help with housing issues: <input type="checkbox"/> Experiencing Homelessness <input type="checkbox"/> Facing Eviction <input type="checkbox"/> Utility Bills	<input type="checkbox"/>
	I need help with: <input type="checkbox"/> Childcare <input type="checkbox"/> Baby Supplies (Diapers and Formula) <input type="checkbox"/> Clothing or Personal Items	<input type="checkbox"/>
<b>Other</b>	I need help with: _____ _____	<input type="checkbox"/>
<b>None</b>	I do not need any help at this time.	<input type="checkbox"/>

Figure 1: Social needs screening tool

