



Pediatric Emergency Medicine Fellowship

FALL 2025 INTERVIEW SEASON



Children's National.

Washington, DC

Contents



Message from Directors	2
Message from Fellows	3
Emergency Department	6
Cedar Hill Regional Medical Center	7
Your Schedule and Block Rotations	8
Teaching	9
Simulation	10
Research	11
Mentorship, Benefits, Administrative Work	13
Graduate Programs	14
Educational Curriculum	15
Division Faculty Profiles	17
Fellow Profiles	31
Staff Profiles	35
Recent Fellowship Publications	36

A message from your fellowship directors



Welcome to Children's National Hospital and congratulations on your excellent career choice, Pediatric Emergency Medicine!

We are excited to meet you and to show you what makes our program a compelling place to train. We are a diverse group of physicians and staff who strive to provide excellent care to the diverse community of Washington, D.C. We continue to live by Jim Chamberlain's words that our primary goal during the three years of fellowship is for you to have a good time and spend time with friends and family. From there, being a good clinician and investigator will follow.

This is a well-balanced program that aims to train not only the best PEM professionals in the field, but also to keep you the same fantastic person you were when we first interviewed you.

Jillian, Christina, and Jennifer



A message from the fellows

Welcome to your interview day in Washington, D.C.! We look forward to getting to know you and having you get to know us. Please take this opportunity to explore the different aspects of our fellowship and how they fit your personal style.

Some of the unique aspects of our fellowship program are:

- Our program fosters autonomy early in fellowship. You will quickly learn how to single-handedly manage a large-volume, high-acuity emergency department and trauma center.
- As the only freestanding children's hospital in town, we transport patients from at least a 500-mile radius. As a result, the range of what we see on a daily basis is sometimes unbelievable.
- The faculty treats us as full members of the department with an equal say in the everyday functioning of the ED. They are very responsive to concerns and suggestions that the fellows have regarding our program.
- Although we work hard, Children's National is a fun place to work. You have a sense of working on a team toward a common goal of good care for each patient.
- Our faculty serves as great role models in all parts of our training – from the research of Monika, Jim, Stephen, Shireen and others to the advocacy and administrative work of Kathy, Joelle, Karen and Lenore, to the dedicated teaching of Dewesh, Emily, Sam and all.

Through your interview process, please feel free to contact any or all of us with any questions that may come up regarding our program, PEM fellowship, or the interviewing process in general.

Best of luck with the interview season!

The Fellows





Graduation 2025



New Fellow Happy Hour 2025



Advocacy day on The Hill Spring 2024



Annual Advocacy Day Fall 2024

Emergency Departments: *Sheikh Zayed Campus*

The Children's National Hospital (CNH) ED is a busy one, averaging more than 125,000 visits per year. It is the only pediatric level I trauma center in the District of Columbia and one of only two for the state of Maryland (the other being Johns Hopkins). In addition to patient visits, we take referral calls from pediatricians in Washington, D.C., Maryland and Virginia, and we help manage a busy ground and helicopter transport service that handles more than 5,000 calls annually. We serve as the medical control for all pediatric transport calls, except for neonates.

The Emergency Department at the Sheikh Zayed campus is divided up into 2 branches – Fast Track and the main ED. Fast Track is open 24 hours daily and is staffed by pediatric associates, pediatric nurse practitioners and physician assistants. The associates are physicians who have completed a general pediatrics residency but have not done a PEM fellowship. Many have worked for a few years as an associate and can be a great resource. There are several full-time associates who staff both the ED & Fast Track, and a pool of part-time associates & moonlighters who are only certified to work in Fast Track.

The main ED is staffed by PEM attendings, fellows, pediatric associates, pediatric nurse practitioners, physician assistants, residents and medical students. The residents come from many different backgrounds – there are pediatrics residents from Children's National and the National Capital Consortium (Walter Reed National Military). In addition, there are emergency medicine residents from the George Washington University and Washington Hospital Center/Georgetown University programs. Finally, there are family medicine residents from Georgetown, Howard and several other programs. There will intermittently be 3rd and 4th year medical students and visiting pediatric residents as well. (PHEW!) The fellow's role in the ED is to help precept the residents and students and to be the physician-in-charge at all traumas, code blues and medical alerts, with an attending present. In addition, whenever the fellow is working, he/she has the possibility of carrying the "phone" (starting in January of 1st year) – making them the physician primarily responsible for overseeing flow in the ED and handling transport referrals and medical control through the Emergency Communications and Information Center (ECIC), for both ground and air. We believe that the combination of ED flow management with the skills of evaluating patients and precepting students and residents is what makes the Children's National fellowship graduate so clinically strong – learning to run a busy ED is one of the reasons you're doing this fellowship!



We believe that the combination of ED flow management with the skills of evaluating patients and precepting students and residents at the same time is what makes the Children's National fellowship graduate so clinically strong.



Emergency Departments:

Cedar Hill Regional Medical Center

In April 2025, the city opened a new hospital in Southeast Washington, D.C., to address the needs of the most resourced limited population. Cedar Hill is a George Washington University Hospital with Children's National Hospital ED Physicians contracting in the emergency department. This community hospital experience has replaced our work in a stand-alone ED in southeast called United Medical Center.

In September 2010, our division opened a satellite ED at United Medical Center in Southeast Washington, D.C. This site closed in April 2025 and Cedar Hill Hospital was opened on the same day! We see more than 120,000 patients between the main Sheikh Zayed campus and the Cedar Hill campus combined.

Cedar Hill is staffed 24/7 with a PEM attending, working with fellows, PAs, NPs and clinical associates. For the fellow, these shifts teach about the community hospital ED experience where fellows practice emergency medicine without subspecialists immediately available. This allows for deeper learning in our field.



YOUR SCHEDULE

DUTY HOURS

Fellows work approximately 36 hours/week in the ED (either at CNH or adult ED) during clinical months (total of 15 shifts), and about 10 hours/week on an elective month (4-6 shifts). Shifts are a combination of: 7am-4pm, 9am-6pm, 11am-8pm, 3pm-midnight, 5pm-2am, 7pm-2am, 9pm-3am, and 11pm-8am. All these shifts will have a PEM attending on as well. Starting 2 years ago, we instituted precepted shifts for the first 4 months of fellowship to provide an opportunity for fellows to strengthen their clinical reasoning and have time to develop an understanding of our system prior to being in charge of a team. You will have a graduated increase in the types of shifts you do with overnights coming later in the 1st year.

CONFERENCES

Educational conferences are held in-person every Thursday from 8am-12pm—this is required and protected for fellows. Faculty have the option to join via Zoom. One Thursday every other month begins at 7:30am in order for fellows to teach residents in a mock code format. Other learning opportunities include the Department of Pediatrics Grand Rounds on Wednesdays at 8am and the well-attended Professorial Rounds on Thursdays from 12pm – 1pm. In Professorial Rounds, an interesting case is discussed – usually a patient who presented through the ED. An attending or fellow then facilitates a vigorous multi-disciplinary discussion. Fellows are welcome to present and have taken advantage of this opportunity for a hospital-wide presentation.

MOONLIGHTING

Fellows are allowed to moonlight with the approval of the program director. There are opportunities to cover shifts at the CNH ED, Fast Track and at Cedar Hill (CH). Moonlighting can begin in Fast Track and at CH after completing 3 months of orientation, and in the main ED after completing the 1st precepted service month.

EMERGENCY MEDICINE TRAINED FELLOWS ROTATIONS BY BLOCK	
Pediatric emergency medicine	9 months
PICU (1 st year)	1 month
NICU at GWU (1 st year)	1 month
Charge shadow/transport (1 st year)	.5 month
Pediatric hospital medicine (2 nd year)	1 month
Pediatric cardiology (2 nd year)	1 month
Pediatric neurology consults (2 nd year)	.5 month
Anesthesia (1 st year)	1 month
Outpatient pediatrics (1 st /2 nd year)	1 month
Wound management/US (1 st year)	1 month
Child abuse (1 st year)	1 month
Orientation (1 st year)	1 month
Research	5 months

PEDIATRIC TRAINED FELLOWS ROTATIONS BY BLOCK	
Pediatric emergency medicine	13 months
PICU (1 st year)	1 month
Adult EM at WHC (3 rd year)	1 month
Adult trauma at INOVA Fairfax, VA (1 st year)	1 month
Anesthesia (1 st year)	1 month
Charge shadow/transport (1 st year)	.5 month
Toxicology at Nation Capital PCC (3 rd year)	1 month
Wound management/US (1 st year)	1 month
Ultrasound at CNH/GW (2 nd year)	1 month
Emergency medical services (3 rd year)	1 month
Child abuse (1 st year)	1 month
Orientation (1 st year)	1 month
Injury rotation (2 nd year)	1 month
Leadership elective (2 nd year)	.5 month
Research and electives	11 months

TEACHING

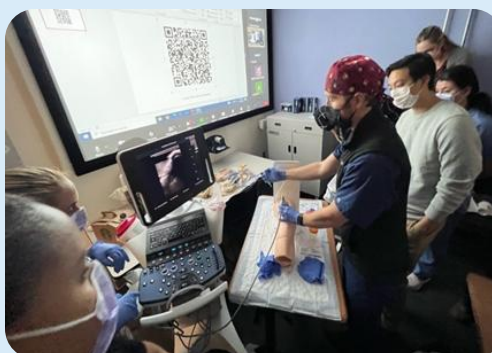
Educational conferences are held every Thursday from 8am-12pm. In-person attendance at conference is mandatory and protected (no clinical responsibilities the evening and night before).

Within this weekly Educational Conference, we have established some curricular conferences, including ECG conference, Orthopedics conference, Radiology conference and others. Conferences are led by PEM faculty, invited guest speakers from within CNH, as well as from around the Metropolitan area. Fellows are responsible for some conferences, such as Journal Club, EBM, and Toxicology sessions. We also have multidisciplinary joint conferences, including Emergency Medicine-Critical Care Conference, Emergency Medicine-Hospitalist Medicine Conference and Emergency Medicine-Neurology Conference.

In addition to the weekly core educational conference, there is a curriculum for all 1st and 2nd year hospital-based fellows covering essentials related to future academic faculty skills and development, such as teaching at the bedside, feedback skills, creating an educational portfolio, financial literacy and research skills. These quarterly full day sessions are facilitated by various faculty members and staff from throughout CNH. The hospital and university also hold seminars and workshops on grant writing, manuscript preparation, ethics of research, abstract presentation, etc.

At the end of this manual, there is a list of topics covered over the three-year fellowship to give you a glimpse of the educational content of our fellowship program.

By the end of fellowship, each fellow will have a portfolio of talks/teaching sessions that will be useful in a pinch (and be a strong aspect of your educational portfolio and CV).



SIMULATION

Simulation is a crucial part of our educational curriculum. Fellows participate in “large group” simulations, which primarily focus on team dynamics and team communication with a secondary focus on medical management. These simulations occur approximately every other month. Fellows also participate in “small group” simulations (5 fellows/group), which follow a 3-year curriculum.

Each fellow participates in 4 “small group” simulations per year. These simulations are focused on medical management of both common and uncommon cases. In addition, we utilize simulation to teach procedures and newborn deliveries.

There are also numerous opportunities for fellows to teach through simulation. Fellows facilitate mock codes for the residents in the ED and lead skills sessions for the residents throughout the year and during specific full-day workshops, such as Intern Resuscitation Day held each spring for rising 2nd-year residents.



RESEARCH

CURRICULUM

The PEM fellows' research curriculum is an important part of your training. During training, you will become adept at understanding published research and at conducting your own research. The scholarly rigor and attention to logistical detail required to complete a research project will provide valuable training that will carry over into other areas of professional development. The ability to identify outcomes and measure the success of interventions is important not only for publishable research projects, but also administrative decisions, quality improvement projects, and medical education.

Importantly, this curriculum is an interactive model of training, which means that your input and participation are a must for its success and your success. You will draw the most from training through active participation and active support of your peers' efforts.

ACTIVITIES

All fellows will complete the ABP's requirement for a fellowship scholarly activity, with a research project that results in a publishable manuscript. The following activities are expected of all PEM fellows in the Children's National program:

YEAR (S)	MENTORSHIP
Scholarly oversight committees	
2, 3	November
All	May
All	Regular meetings with primary research mentor starting December year 1
Education	
1	Biostatistics course at GWU SPHHS
1	Epidemiology at GWU SPHHS
1	Attend ED research seminar
All	Participation in >80% journal clubs
Meetings and presentations	
1, 2	PEM Fellows' Conference
2, 3	Children's National Research Week, Spring
2 and/or 3	Abstract submission to regional (AFMR) and national (PAS, SAEM) meetings
Publications and projects	
1 or 2	Review article or case report with faculty
2	Core curriculum quality improvement project
2 and/or 3	Original science article

RESEARCH

OPPORTUNITIES

CNH PEM fellows are encouraged to explore other opportunities within the research curriculum, including involvement in national and regional research organizations and additional research training. First-year fellows are expected to attend the monthly research faculty meetings to learn about active research in the department and research skills such as grant writing, oral presentations and scientific writing.

In addition to the degree programs discussed below, possible areas of involvement include the Academic Pediatric Association, the American Federation for Medical Research, and the Society for Academic Emergency Medicine.

Fellows may consider presenting these meeting throughout the year:

MEETING	ABSTRACT DUE	CONFERENCE DATE
ACEP Scientific Assembly	April	October
AAP National Conference & Exhibition	April	October
AFMR Eastern Regional Meeting	November	April
Children's National Research Week	February	April
Pediatric Academic Societies Meeting	November	May
Society for Academic Emergency Medicine	December	May

MENTORSHIP, BENEFITS & ADMINISTRATIVE WORK

Mentorship

- Each fellow will choose and connect with an individual Clinical Mentor or mentors at the beginning of fellowship. The fellow and clinical mentor(s) meet at least monthly to discuss interesting clinical situations and broader career advice. In addition, the fellow and clinical mentor discuss the development of the fellow's individualized learning plan and review feedback.
- During the first six months of training, fellows, in consultation with the program directors, will select a Research Mentor. The research mentor will guide the fellow to complete at least one individual research project in the topic of his/her choosing.

Benefits

- PGY 4: \$ 87,135
- PGY 5: \$ 91,057
- PGY 6: \$ 95,154
- Each fellow receives a \$2,500 educational stipend per year. Additional support is provided for conferences at which fellows are presenting.
- Each fellow has a Research Instructor appointment at George Washington University, permitting full coverage of tuition at GWU, as well as medical library online access.
- Each fellow is given 4 weeks of vacation time each year.

Administrative Work

- Each fellow is required to become involved in some form of administrative activity, within the department or the hospital, and sometimes on the regional and national level. This may take the form of committee involvement (e.g., code blue committee or performance improvement committee) alongside inter-disciplinary members from the Division or a specific administrative project, such as developing a new clinical guideline. Think about what might interest you and ask us how you might get involved. This is another time to be proactive – you'll gain good experience by participating in some administrative aspect of how your division or hospital runs, and it will help you when you are a faculty member.

GRADUATE PROGRAMS

All fellows are required to take courses in biostatistics and epidemiology, which is taken at GWU, even if not pursuing an advanced degree.

MASTERS in PUBLIC HEALTH (MPH)

- As part of your research training, graduate courses in public health are available with full tuition coverage, including the full MPH program from the School of Public Health at George Washington University. There are multiple tracks including Health Policy, Epidemiology and Maternal and Child Health. The MPH program consists of 36 hours of course work – 16 credit hours of required course work and 20 hours of specialty course work. Each track provides a coordinated curriculum that emphasizes the development and application of professional skills. All courses are scheduled to meet the programmatic needs of both full- and part-time students.
- More information: publichealth.gwu.edu/academics/graduate/masters-programs

MASTERS in BUSINESS ADMINISTRATION (MBA)

- The MBA program is through the School of Business at George Washington University. GRE and GMAT are not required.
- More information: business.gwu.edu/mba

MASTERS in HEALTH ADMINISTRATION (MHA)

- Several fellows have completed the MHA program from the School of Public Health at George Washington University.
- More information: publichealth.gwu.edu/programs/health-administration-mha



EDUCATIONAL CURRICULUM

The curriculum is built on the core concept of longitudinal learning. This is done by creating a curricular framework to each aspect of our education. To this end, there is a curriculum for ECG learning, Orthopedics, Toxicology, journal club, ultrasound, EMS, disaster preparedness, advocacy and Radiology. There are also broad categories of learning that includes medical and surgical emergencies. The topics under these categories are taught on a rotating schedule over the 36 months of fellowship. **Examples of topics include:**

MEDICAL

- Congenital heart disease
- Meningitis (viral, bacterial)
- Hepatitis
- Dehydration/electrolyte disturbances
- Hypertension
- Acute renal failure
- Cancers: presentation & initial workup
- Osteomyelitis/septic arthritis
- Pneumonia
- Sepsis/bacteremia
- Head & neck infections
- Gastroenteritis
- UTI/pyelonephritis
- Tropical Diseases
- Cardiac Infections
- Spine Emergencies
- Fever
- BRUE
- Syncope
- Abdominal Catastrophes
- Upper Airway Emergencies
- Severe Viral Exanthems
- Anaphylaxis/serum sickness
- Asthma
- Dysrhythmias
- DVT/Pulmonary Embolism
- Dermatologic emergencies
- DKA
- Adrenal Disorders / Pheo
- Thyroid disorders
- Inflammatory bowel disease
- Acute liver failure
- Anemia
- ITP & platelet disorders
- Coagulation disorders & DIC
- Metabolic disorders overview
- Seizures & status epilepticus
- Stroke
- Migraine

- Skin/Deep tissue infections
- Juvenile Idiopathic Arthritis
- Lupus
- HIV
- Toxic shock
- Mono
- Acute Rheumatic Fever
- Hypoglycemia
- Hypopituitary

TRAUMA / SURGERY / RESUSCITATION / EMS / PSYCHOSOCIAL / ENVIRONMENTAL

- Trauma
- Severe Blunt head injury
- Mild-Mod Head Injury
- Neck/C-spine imaging
- Facial trauma
- Chest/ spine injury
- Abdominal Trauma
- Pelvic and genitourinary trauma
- Penetrating trauma
- Upper extremity fractures
- Lower extremity fractures
- GI emergencies
- Urologic emergencies
- GYN emergencies
- Orthopedic emergencies
- Physical Abuse/Neglect
- Psych emergencies/major behavioral issues, substance abuse
- Violence
- Death/Dying
- Pain management
- Altitude emergencies
- Bioterrorism
- Temperature emergencies
- Blast injury
- Radiation Injury
- Bites

- Drowning
- EMTALA
- Disaster/mass casualty
- Medical-Legal issues

TOXICOLOGY

- Anticholinergics
- Acetaminophen / Salicylates
- Household Alkalis and acids
- Oral Hypoglycemic Drugs
- Antidepressants (TCA, SSRI)
- Serotonin Syndrome / Neuroleptic
- Malignant Syndrome
- Cardiovascular agents (digoxin, eta-blockers, Ca-channel blockers)
- Phenothiazines, butyrophenones, & other neuroleptics
- Organophosphates (Nerve Agents)
- Lead / Iron
- Hydrocarbons
- Agents of Chemical terrorism
- Alcohol toxicity (e.g.: ethanol, methanol, isopropyl, ethylene glycol)
- Sympathomimetics (cocaine, amphetamines, MDMA, and Ecstasy)
- Hallucinogens / Other Substances of Abuse (ketamine, PCP and GHB-like agents)
- Methemoglobinemia & Narcotics
- Common toxic plants / Mushrooms
- Herbal/alternative remedies

EDUCATIONAL CURRICULUM

PROCEDURES / EXAMINATION / SPLINTING /

ULTRASOUND

- Discuss the indications, contraindications, key steps and potential pitfalls, complications and relevant
- (Annual) Rapid sequence intubation
- (Annual) Procedural sedation and analgesia
- (Annual) Difficult airway, direct and indirect laryngoscopy, percutaneous airway management
- (Annual) Cardiac pacing, converting SVT non-pharmacologically, defibrillation
- Splinting
- Reductions
- GI toxicology procedures
- GI procedures
- Chest procedures
- Regional anesthesia
- Neuro procedures
- Ophtho procedures
- ENT Procedures
- FB removal: airway, SQ, nasal, ear, tonsils, rectal/vaginal, fishhook, rings; ultrasound-guided FB localization/ removal
- Dental procedures: dental fractures, re-implanting avulsed teeth, dental splints, soft tissue injuries of mouth, reduction of TMJ dislocation
- Pediatric ECG interpretation
- Misc: Treatment of umbilical granuloma; hair tourniquet removal; envenomation management/tick removal
- Gynecologic exams
- ASA: Forensic examination of a sexual assault victim
- GU procedures
- OB/NICU procedures: delivering a baby, neonatal resuscitation, preventing meconium aspiration, congenital anomalies
- Management of hand and finger injuries
- Incision & drainage
- Burn care
- Skin toxicology procedures
- Trachs and g-tubes: Replacement and familiarity with different types
- Respiratory procedures

JOURNAL CLUB

- Every year, we will be covering 5 core topics, 4 to be covered by the first-year fellows, 1 by the 3rd-year fellows. Topics presented and practiced at Journal Club include:
 - Core topic #1: Quality Assurance / Quality Improvement
 - Core topic #2: Randomized-controlled Trial
 - Core topic #3: Diagnosis: Likelihood ratios
 - Core topic #4: Clinical Decision Rule / CART analysis
- Once core topics have been covered each year, pick from 1 of the following on a 3-year rotating basis:
 - Harm/Case Control: OR vs RR
 - Prognosis/Cohort Qualitative Research
 - Overview/Metanalysis

ULTRASOUND CURRICULUM

The objective of the ultrasound program for pediatric emergency medicine fellows is to train them in emergency ultrasound. PEM fellows will develop clinical emergency ultrasound skills that will be necessary and critical to their future practice of pediatric emergency medicine.

Throughout the 3-year fellowship, the PEM fellows will receive ultrasound training in the following formats:

- 2-day Introduction to Ultrasound course during their first-year orientation, which will introduce the fellow to the basics of ultrasound.
- 3-month orientation (July/August/September of 1st year)
- 1-month ultrasound rotation in the second year of fellowship which will include:
 - Supervised and unsupervised scan time
 - Quality assurance image review sessions
 - Ultrasound Journal Club attendance and presentation
 - Presentation of an US case on PEM Academy
- Continued clinical use of ultrasound throughout their fellowship, in addition to supervised and unsupervised scan time scheduled by the fellow. PEM fellows will achieve competency by completing a minimum number of scans.
- Incorporating Sono-Sim into simulation.
- Image Simulation (to be done during first two years)

LEADERSHIP



Joelle Simpson, MD, MPH

Division Chief, Medical Director Emergency Preparedness
jsimpo@childrensnational.org

Undergrad: Harvard

Med School: George Washington

Residency: Johns Hopkins

Fellowship: Children's National

Joelle is the Division Chief of the Emergency Department since July 2021 but she has been working in the Division since she started as a PEM fellow in 2010. She is also the Medical Director for Emergency Preparedness for CNH since 2015 and actively led the hospital COVID response and overall disaster plans to help ensure a safe space for our staff, patients and visitors. Joelle spends a lot of time on the Board of Directors of the AAP, and works with federal agencies, local government, and local hospitals to advocate for kids in disaster planning. Joelle was born and raised in Trinidad the first 13 years of life and also claims New York, Boston, Baltimore and DC as her cities of residence. She pursued an MPH in medical school then headed to Baltimore for residency. Her first year out of residency she worked in private practice and as a part time pediatrician in a general ER in Baltimore – during the H1N1 pandemic. She attributes that career experience to motivating her to do pediatric emergency medicine and disaster medicine. She's stayed in DC since her PEM fellowship and her academic interests include disaster preparedness, prehospital medicine, and medical education. Joelle was recently awarded a federal grant to build a Pediatric Pandemic Network with other Children's hospitals and works with quite a few of the EMTC teams (MDs and RNs) in this work. In her downtime, Joelle considers herself a socialite and loves traveling, cooking, entertaining, and now exploring her skills in vegetable garden resuscitation. She's glad her pediatric resuscitation skills far surpass her ability to keep her plants alive.



Deena Berkowitz, MD, MPH

Associate Division Chief for Fast Track, Director Acute and Urgent Care Fellowship
dberkowitz@childrensnational.org

Undergrad: Columbia

Med School: Yale

Residency: Yale

Fellowship: Children's National

Deena was born in Texas and raised near the beach in Belle Harbor, NY. After completing an undergraduate degree in history at Columbia, she earned a combined MD-MPH in health policy at Yale. She and her husband Benjamin, an intellectual property lawyer, live in Silver Spring, MD with their five children, ages 11 to 23 years. Deena's research interests focus around quality improvement, resource utilization and pediatric urgent care. In 2018, she and Ioannis Koutroulis co-founded an academic pediatric urgent care fellowship at Children's National.



Kathleen Brown, MD

Associate Division Chief for Quality and Safety, EMS Base Station Medical Director
kbrown@childrensnational.org

Undergrad: Georgetown

Med School: NYU

Residency: SUNY Syracuse

Fellowship: SUNY Syracuse

Kathy grew up on Long Island but lost the accent long ago. After medical school in NYC, Kathy moved to upstate NY (against her better judgment) to complete residency and fellowship. She stayed on as an attending physician at SUNY Upstate until 2002. At that point it hit her that 200 inches of snow a year was not for her and moved to DC. Kathy's current research activities include many collaborative PEM projects through the PECARN network. Specific topics of interest are translation of research into practice, improving quality of emergency care and prehospital care. She previously served as the Medical Director for The EMSC National Resource Center and is active in national professional organizations (ACEP, AAP and NAEMSP). Locally, Kathy is involved in the MD and DC EMS systems. Kathy currently lives in Silver Spring. She wishes she had more time for her hobbies including gardening, painting, cooking and remodeling her home.

LEADERSHIP



Sadiqa Kendi, MD, MPH

Assoc Chief for EM Academic Affairs and Research Chief Medical Officer, Safe Kids Worldwide
skendi@childrensnational.org, skendi@safekids.org

Undergrad: Spelman College

Med School: Yale

Residency: Children's Hospital at Montefiore

Fellowship: CHOP

Sadiqa's academic interests include research and advocacy in injury prevention and equity science. She is excited to be the inaugural Chief Medical Officer for Safe Kids Worldwide, a pediatric injury prevention focused nonprofit based at Children's National. Sadiqa was born and raised in south Georgia and has lived up and down the east coast since then. She has not abandoned her southern roots and is known to drop a "y'all" during conversation regularly. Sadiqa is a breast cancer thriver, a vegan, and outside the hospital (and sometimes inside) can be found meditating, eating good food, traveling, or hanging out with her partner and daughters.



Sephora Morrison, MD, MSCI, MBA, CPE, CPXP

Associate Division Chief of Operations: Director of EMTC Human Experience & Clinical Integration
smorriso@childrensnational.org

Undergrad: University of Michigan

Med School: Univ. West Indies-Jamaica

Residency: Long Island/Beth Israel, NY

Fellowship: Northwestern/Lurie Children's

AKA "Seph", was born and raised in Jamaica, but has moved around the US training in several locations, finally settling in DC, close to family. However, she is a fierce Jamaican and it will always be home! She enjoys travelling but home is sacred, and a good "lime" is always welcome. Taking care of you is an important part of her life focus. She does this by intentionally focusing in on her lifestyle hobbies which embody physical movement and nourishing fuel.



Pavan Zaveri, MD, MEd

Associate Division Chief for Education, Director of ED Education, Simulation Program Medical Director
pzaveri@childrensnational.org

Undergrad: University of Texas at Austin

Med School: Baylor

Residency: Baylor

Fellowship: Children's National

Pavan (pronounced like "oven" with a "p") finished fellowship here, grew up all over Texas and has lived in most areas of the country. He currently lives in Maryland with his wife, and children, Manan and Kavya. After residency, Pavan worked for a year as an attending in the ED at Texas Children's. Pavan's research interests are in medical education, particularly with simulation and serves as the Medical Director for the Simulation Program at Children's National. After a long shift Pavan likes to read for pleasure. He enjoys religion and traveling, particularly to India.



Dewesh Agrawal, MD

Vice Chair for Medical Education, ACGME Designated Institutional Official (DIO)

dagrawal@childrensnational.org

Undergrad: Duke

Med School: University of Michigan

Residency: Boston Children's

Fellowship: Boston Children's

Dewesh grew up in Toledo, Ohio and after residing in the Kalorama section of DC for several years now lives in Bethesda, MD. He and his lovely wife Priti have 2 children, a son Sachin and a daughter Jayna, who are arguably a little less adorable now in their teenage years. Dewesh joined Children's National in 2003 upon completion of his fellowship and was the Director of Residency Education for the EMTC until 2007, when he took on the role of Director of the Pediatric Residency Program at Children's National. After training 500 pediatric residents, he became the Vice-Chair for Medical Education and ACGME Designated Institutional official at Children's National in 2019. He holds a Master Teacher's Certificate in Medical Education and was the winner of the cherished faculty Golden Apple Award in 2005 and the Distinguished Teacher Award from George Washington University School of Medicine in 2019. His research interests include procedural sedation, fever evaluation, and graduate medical education. His outside interests include running and traveling. Over the past couple decades he has traveled to Fiji, Australia, Japan, Singapore, Malaysia, Thailand, Cambodia, Indonesia, Vietnam, India, United Arab Emirates, Qatar, Morocco, Croatia, Italy, Portugal, Spain, France, Germany, England, Ireland, Iceland, Canada, Alaska, Mexico, Peru, Venezuela, Costa Rica, Dominican Republic, Puerto Rico, and Aruba. He challenges anyone, anytime to a game of medical trivia. No, seriously...anyone, anytime. Bring it on!

DIVISION

**Shireen Atabaki, MD, MPH, FAAP, FACEP**

Associate Director of ED Global Health Programs, Physician lead liaison for ED APP program

satabaki@childrensnational.org

Undergrad: Howard

Med School: Howard

Residency: Children's National Fellowship: Children's National

Shireen had a dad in the foreign service so enjoyed living all over the world (DC, Kabul, Beirut, Geneva, Tehran, Dubai...) and yet she really believes that Washington is the most exotic place of all of them. She currently resides in Bethesda with her family and one of her daughters is at GWU. Shireen is Medical Director of School Telehealth and Associate Medical Director of Telemedicine for CNH. She is PI for the FCC Connected Care Pilot and COVID-19 Telehealth Programs with a focus on improving access to care for underserved families. She started the direct- to- consumer telehealth program at CNMC. Her research interests include TBI/concussion, Telehealth and clinical informatics. Her personal interests include skiing, hiking and writing. Shireen has witnessed a civil rights movement, a coup d'etat, a revolution and a women's rights movement. Her favorite quote: "Always remember there is a light at the end of this tunnel."

**Kristen Breslin, MD, MPH**

PEM Fellowship Research Director, IRB Chair

kbreslin@childrensnational.org

Undergrad: MIT

Residency: Boston Combined Residency

Med School: Harvard

Fellowship: Children's National

After finishing residency in 2002, Kristen stayed on for 4 years as a community hospitalist and urgent care doctor for Children's Boston. In 2006, she returned to the DC area as a hospitalist and ED associate at Children's National. After seeing the fellowship program in action, she signed on! She completed her PEM fellowship and her MPH in Epidemiology through GW in 2012. Her research interests include patient transitions to inpatient care, analysis of medium and large datasets, and teaching study design and biostatistics. She has been an IRB member since 2013 and became IRB Chair in 2021. She has also continued her interest in global health as a faculty mentor for residents rotating in Central America and teaching residents and nurses in the Global Child Health Week. She lives in Bethesda with her husband and her daughter.

**Amie Cahill, MD**

acahill@childrensnational.org

Undergrad: Rhodes College

Residency: Le Bonheur Children's

Med School: University of Tennessee

Fellowship: Children's National

I'm a Southern woman born to Midwestern transplants to the Southeast. While I spent my childhood in Atlanta and Birmingham, Memphis was my home for my education and training from college through residency. Children's National PEM Fellowship lured me to DC and my current beloved Adams Morgan Neighborhood. As a new attending here at Children's I am pursuing academic and clinical interests in Safety and Quality as well as Trauma. In addition, I plan to pursue an MBA from GWU. Though I wish I was interesting enough to have real hobbies, I generally just enjoy spending my free time at the park or running trails with my awesome dog, having happy hour with friends, traveling, and exploring outdoor breweries, camping, and hiking areas with friends and our dogs.

**Richmond Castillo, MD**

RCASTILLO@childrensnational.org

Undergrad: Johns Hopkins University

Residency: Northwestern University/McGaw Medical Center (Emergency Medicine)

Med school: Mayo Clinic Alix School of Medicine

Hi all! I grew up in Jersey City, NJ and learned to love the DMV area where I did my undergrad and got my Master's degrees in Baltimore. After 6 years in the area, I moved to the Midwest where I did medical school at the Mayo Clinic and moved on to do my residency in Emergency Medicine at Northwestern University in Chicago. I finally moved back and am excited to continue learning all things pediatric emergency medicine here at Children's National! My academic interests are in Medical Education with a focus on simulation as well as mentorship for Emergency Medicine residents interested in PEM! Outside of work you can find me going for a walk, exercising either with Pelaton or StairMaster, planning the next meal to cook, or contemplating how I should brew my next cup of coffee!

DIVISION

**James Chamberlain, MD**

Director, ED Data Analytics and Informatics

jchamber@childrensnational.org

Undergrad: RPI Residency: Maryland

Fellowship: Children's National

Med School: Connecticut

Jim Chamberlain is the oldest member of the division and has been at Children's National since 1988. He became interested in data analytics as a method for driving quality improvement when he was Division Chief. He is now Director of Data Analytics and Informatics for the division and heads the NERDS (Nexus for Emergency Research and Data Science). He has three children and two wonderful grandchildren who live in London.

**Jennifer Chapman, MD**

PEM Fellowship Director

jchapman@childrensnational.org

Undergrad: Princeton

Residency: Northwestern/Lurie Children's

Med School: McGill

Fellowship: Nationwide Children's

After some years in Montreal (go Canadiens!), Chicago and Columbus, Ohio, I have returned to the city in which I grew up. I have had the opportunity to travel to wonderful countries including China, Swaziland, and Armenia to both practice and teach pediatrics. I trace my love for international health to my diplomat father and to my mother, who raised us with a passionate belief in the oneness of all people. More locally, I am absorbed by working on projects and advocacy for immigrant families and by serving as the Fellowship Program Director. Outside of work, I lend my energies to community-building work and aspire to creating a porch garden for my apartment.

**Katie Donnelly, MD, MPH**

Medical Director, Safe Kids DC and Medical Director, Youth Violence Intervention Program

kdonnell@childrensnational.org

Undergrad: Wofford College

Residency: Northwestern/Lurie Children's

Med School: Robert Wood Johnson

Fellowship: Children's National

Katie grew up in the wilds of New Jersey and after a brief stint in South Carolina for college, returned to New Jersey for medical school. She ventured to Chicago for residency and a chief year, where she developed a fondness for deep dish pizza, ice hockey and street festivals. She chose a fellowship in DC for the chance to train at an excellent tertiary care pediatric emergency department. She liked it here so much she decided to stay on as an attending, no matter who gets elected every 4 years. Her research interests include injury prevention, especially firearm injury prevention and violence prevention. Outside of the ED, Katie enjoys live sporting and music events, the National Zoo and all the free museums here in DC! She lives with her partner, three sons and four(!) cats in Petworth.

**Mickey Emmanuel, MD**

memmanuel3@childrensnational.org

Undergrad: University of Florida Med School: University of Florida

Residency: Children's National Fellowship: Children's National

Mickey was born in Kerala, India and moved to NJ when she was 7 and have spent most of her life growing up in Florida. She completed her residency and fellowship in PEM in DC and is excited to stay on as an attending! She is looking forward to contributing towards health equity and quality improvement work that impact the local community, especially related to access to care and mental health needs. Outside of the hospital, she loves trying out new recipes, running/walking/biking around the city, and spending time with her husband, family and friends.

DIVISION

**Tress Goodwin, MD**

Assistant Medical Director for Emergency Preparedness, Pediatric Medical Director,
Regional Emerging Special Pathogen Treatment Center
tgoodwin@childrensnational.org
Undergrad: Stanford

Med School: Stanford

Residency: Medstar Georgetown/WHC EM

Tress grew up in sunny San Diego and moved to Washington, DC, in 2008 for her Emergency Medicine residency. After finishing, she spent six years working at INOVA Fairfax, helping both adults and kids in the ER. She joined the US Navy Reserves and was deployed to Afghanistan in 2015, where she led a trauma team at the NATO Role 3 Hospital in Kandahar. Even though she's no longer in the Navy, she's still connected through her husband Brett, a Navy officer she met during her deployment orientation. Tress loves working with kids and enjoys her job at CNH, but she also keeps her "big kids" skills sharp by taking shifts in a community ED. Her academic interests include military and disaster medicine, as well as pandemic preparedness. She works with Dr. Simpson on emergency preparedness for the department and is the pediatric site director for the Regional Emerging Special Pathogen Treatment Center, preparing for the next big outbreak. She lives in DC with her husband Brett, their twins Sam and Gabriela, and their dog Kiwi. They love to bike and travel together...always with Kiwi in tow!

**Monika Goyal, MD, MSCE**

Endowed Chair, Women in Science and Health (WISH), Co-Director for Translational Research
mgoyal@childrensnational.org
Undergrad: Duke
Residency: CHOP

Med School: University of Pennsylvania
Fellowship: CHOP

Monika was born and raised in Jersey and after brief stints in North Carolina for college, 1 year in San Francisco, and 12 years in Philadelphia. She then moved "South" and joined Children's National in 2012. Monika leads an NIH-funded research program, titled ADAPT-Addressing Disparities through Advocacy, Prevention, and Technology, which has a focus on addressing disparities and inequities in both provision of care and health outcomes for youth. Specifically, her work seeks to leverage the ED to improve adolescent sexual health outcomes and address inequities in the management of pain in the ED setting. She is also involved in firearm injury prevention research and advocacy. Monika has a passion for mentoring and helping faculty and trainees develop careers around their passion and purpose. She lives in DC with her husband and 2 daughters. Current interests include traveling, discovering new restaurants, baking unhealthy but tasty treats, and happy hour.

**Camilo Gutierrez, MD, FACEP, FAAEM**

Director of ED Global Health Program
cgutierrez@childrensnational.org
Med School: El Bosque University Bogota, Colombia
Residency: Miami (Nicklaus) Children's Hospital Fellowship: Nationwide Children's

Camilo is Director of Global Health Programs for the Division of Emergency Medicine. He is Associate Professor of Pediatrics and Emergency Medicine at GW and joined the division in 2018 after 10 years in Boston University School of Medicine / Boston Medical Center. Camilo has diverse interests and was Medical Director for EMSC in MA and led the pediatric emergency response at his institution. As leader for Global Health for the division, he is working in strengthening the opportunities for faculty and fellows to develop opportunities for international collaborations. Camilo is a key opinion leader internationally with emphasis in development of pediatric acute and emergency care systems globally and has been lucky to travel frequently across the globe for these initiatives. He occupies various leadership roles in national and international EM societies and will continue to collaborate and integrate his international efforts with the various Global Health initiatives at CNMC. In his spare time, he enjoys the arts,

**Rachel Hatcliffe, MD**

rhatclif@childrensnational.org
Undergrad: University of Michigan
Residency: Children's National

Med School: University of Michigan
Fellowship: Children's National

I was born in England but moved across the ocean to the Midwest (specifically Chicago) as a pre-teen. I lost the accent but gained a love for all things maize and blue at the University of Michigan for both undergrad (history major!) and medical school. I moved to DC for residency in 2015 and never left! I completed two years as a clinical associate in the emergency department which led me to completing PEM fellowship here at Children's National. My academic interests include prehospital care and patient safety. I love hiking in Rock Creek park, finding great breakfast sandwiches and watching Bravo!

DIVISION



Ellie Hill, MD

ehill2@childrensnational.org
Undergrad: Carleton College
Residency: Duke

Med School: Univ of Pittsburgh
Fellowship: Nationwide Children's

Ellie grew up in Minnesota and has trained in several locations including Pittsburgh, Duke, and Columbus. She is happy to finally find a home in D.C. In her research, she focuses on biomarkers for disease and antibacterial stewardship. She spends her free time with her husband, children, and pets. Find her for outside fun and board games.



Jessica Hippolyte, MD MPH

jhippolyte1@childrensnational.org

Undergrad: Cornell University Med School: The Ohio State University
Residency: Children's National Fellowship: Children's National

Jessica is a New York native but took a detour to Ohio for medical school (Buckeye fan OH-IO). She was so happy to come back to the east coast at Children's National for residency, fellowship, and stayed on as faculty within the division. She currently serves as Assistant Vice Chair of Education and is an Associate Program Director of Professional Development for the residency program. Her academic interests center around health disparities in pediatric emergency and prehospital care, mentorship, trainee wellness, medical education, and advancing diversity, equity, and inclusion in academic medicine. In her spare time, she loves being outdoors, spending time with friends/family, traveling, and going to as many rooftops/happy hours/brunches as possible.



Sarah Isbey, MD, Medical Director of ED Safety & Quality

sisbey@childrensnational.org

Undergrad: Dartmouth Med School: UNC Chapel Hill
Residency: Colorado Fellowship: Children's National

Sarah grew up in the mountains of NC before heading to New Hampshire for college. After college, she taught high school in DC and then made her way back to North Carolina for medical school. Looking for a bit more hiking/skiing and less humidity, she and her husband moved to Colorado for residency. Alas, she craved humidity and family and moved back to DC for fellowship and hasn't looked back! Her research interests include quality improvement, patient safety, left without being seen in the ED, and patient portal use. She serves as the Medical Unit Director for ED Quality and Safety. In her spare time, she is usually hanging out with her husband and kids (daughters Anna (8) and Maya (5)) and getting outside as much as possible!



Lenore Jarvis, MD, Med, Director of ED Advocacy and Health Policy

lj Jarvis@childrensnational.org

Undergrad: Ohio State Med School: Ohio State
Residency: Nationwide Children's (Columbus) Fellowship: Children's National

Raised in Cleveland, OH, I have strong Ohio pride after attending undergrad, medical school and residency in Columbus, OH. OH-IO, GO BUCKS! Prior to attending medical school, I taught first grade for Teach for America in Las Vegas while obtaining a Master of Education. I have many academic interests. International Health is important to me, and I have volunteered medically in Haiti, South Africa, Senegal and India. I am also interested in medical education and child advocacy. In my free time, I enjoy exploring DC, running, biking, yoga, and traveling.



Nate Jones, MD, MA

Undergraduate: Rutgers University

Residency: University of Chicago/Public Policy

Med School: Rutgers University – RWJ

Fellowship: Children's National

Nate is originally from Washington D.C., but he has a strong connection to New Jersey. After leaving New Jersey to endure the cold winters of Chicago for residency and graduate school, he naturally returned to Washington D.C. for fellowship, as it is the most humid place he can tolerate. After completing fellowship, he briefly moved away but has now eagerly joined the faculty at Children's National. Nate is deeply passionate about addressing issues related to health equity and enhancing efforts in diversity and inclusion. This passion is linked to his interest in emergency department operations, with a focus on achieving health equity in clinical operations through quality improvement. Aside from his academic pursuits, he enjoys traveling, staying fit, and discovering new places in Washington D.C. During his free time, he can often be found outside, likely enjoying brunch.

DIVISION



Brandon Kappy, MD

bkappy@childrensnational.org

Undergrad: University of Michigan

Residency: Cincinnati Children's

Med School: Harvard

Fellowship: Children's National

Though I've spent the past decade in Boston and then Cincinnati, I'm originally from Michigan, growing up in the suburbs of Detroit and attending the University of Michigan (go blue!). I've always been interested in government, politics, and policy, obtaining a Masters in Public Policy with my MD. I love being at Children's National because we are able to work alongside clinicians and policymakers that make a difference on both a local and national level. My academic interests include disaster preparedness, cost effectiveness research, and medical innovation. When not in the ED, I love hiking, traveling, playing games, watching pretty much every tv show, and eating at new restaurants! DC's restaurants and international markets are fantastic, and my wife, daughter and I can't wait to continue trying new places!



Jaclyn Kline, MD, Medical Director of Informatics for Emergency Medicine

jkline@childrensnational.org

Undergrad: University of Virginia

Residency: Brown / Hasbro Children's

Med School: VCU

Fellowship: Children's National

Jaclyn was born and raised in Pittsburgh, but was drawn to warmer weather, traveling to UVA for college and staying in Virginia at VCU in Richmond for medical school. She then decided to try a new locale and ventured to New England for residency at Brown. Being closer to family and friends in the DC area happily drew her to Children's for fellowship and it was an easy choice to stay on as an attending. Her academic interests are in informatics and quality improvement, particularly around improving evidence-based care for children through use of clinical decision support and QI initiatives. In her free time, she enjoys spending time with her husband and two young kids, making it out to explore DC's many great restaurants when she can.



Ioannis Koutroulis, MD, PhD, MBA, Director of ED Research

ikoutrouli@childrensnational.org

Undergrad: University of Athens

Residency: Albert Einstein

Med School: University of Athens

Fellowship: Drexel / St. Christopher

Ioannis is originally from Greece. You will find him there every summer enjoying the beautiful beaches. His professional interests include basic and translational research in sepsis and metabolism, as well as medical education and admissions. He is the Director of Research for our division. He is also an avid traveler, trying to explore different cultures and tastes (although freddo - which means cold- cappuccino still remains his favorite thing in the world).



Ilana Lavina, MD

ilavina@childrensnational.org

Undergrad: Yale

Residency: CHOP

Med School: Weill Cornell

Hi everyone! I was born in NYC and grew up in Stony Brook which is on Long Island, NY. After a short trip across the Long Island Sound for college I then moved to NYC for med school. I met my husband two days after my college graduation while shopping in Wal-Mart and we've been making our way down the East Coast ever since, first to Philly for my residency and now to DC. We bought a house in Hyattsville, MD because it was close to some friends of ours, and we absolutely love living there! My academic interests include mental health and suicide prevention as well as POCUS and I'm so excited to be staying on after PEM fellowship for Ultrasound fellowship here at CNH. Outside of work I love spending time with my nephew and little cousins, playing board games and Sudoku puzzles, binge watching TV and trying new restaurants (especially buffets!).

DIVISION



Simone Lawson, MD, PEM, Ultrasound Fellowship Director

slawson@childrensnational.org

Undergrad: UNC Chapel Hill

Med School: UNC

Residency: LSU HSC (Children's Hospital New Orleans)

Fellowship: Carolinas Medical Center (PEM), Children's National (US)

Simone grew up in Charlotte, NC and is a Carolina Girl through and through. She attended both undergrad and medical school at UNC Chapel Hill. She moved to New Orleans for Pediatrics residency (Children's Hospital New Orleans) and stayed a couple more years working in two of the pediatric EDs there. She was thrilled to move back home to Charlotte for PEM fellowship at Carolinas Medical Center (now Atrium Health). During fellowship she had great mentors in ultrasound - so much so, that she decided to pursue another fellowship in Pediatric Emergency Medicine Ultrasound, which is what brought her to Washington, D.C. and Children's National. Since working at Children's National, she has completed the Master Teacher and Leadership Development Program and received her Master's of Education at GWU in 2023. She is currently Program Director of the Pediatric Emergency Medicine Ultrasound fellowship. She spends her free time doing reformer Pilates, going to the Kennedy Center, tending to her plants, and traveling.



Matthew Lecuyer, MD, MPH

mlecuyer@childrensnational.org

Undergrad: Georgetown University

Residency: Lurie Children's Hospital/Northwestern

Med School: UMass Medical School

Fellowship: Brown University

Matthew grew up in New Bedford, MA and made his first stay in DC in undergrad. After residency in Chicago, and fellowship back in New England, he's glad to have moved back to the District to join the faculty at Children's National. His academic interests include population health, LGBTQ health, and advocacy related work with the AAP and AMA. Matt lives in Logan Circle with his husband, Scott. In his free time, Matt enjoys running, traveling, exploring how much DC has grown since undergrad, and Disney.



Christina Lindgren, MD, Associate PEM Fellowship Director

clindgren@childrensnational.org

Undergrad: Georgetown

Med School: Columbia

Residency: Johns Hopkins

Fellowship: Boston Children's Hospital

Christina grew up in DC a few miles from Children's National. After moving up and down the east coast, she joined the CNMC faculty in 2015. Christina's academic interests include graduate medical education and medical simulation. She is passionate about resident and fellow education and loves being a part of our fellowship program. She considers it a true honor and privilege to help guide you through your fellowship as Program Director. When she is not at work you can find Christina at home in Kensington, MD with her husband Myles, eight-year-old twin daughters Sydney and Julia, and ten-year-old son Sawyer. In her free time Christina loves spending time with family and friends, traveling, doing anything outdoors, yoga, cooking and reading a good book.



P. Jamil Madati, MD

pmadati@childrensnational.org

Undergrad: Stanford University

Residency: Emory

Med School: University of Rochester

Fellowship: Boston Children's Hospital

Jamil was born in Dar Es Salaam, Tanzania, grew up in England and moved to the USA as a teenager. Much like his early life, he continued to move around for his post graduate medical training from Rochester, NY, to Atlanta, GA, to Boston, MA and then to San Diego, CA. He joined the CNMC faculty in 2012 and although he sorely misses the sun, beach and palm trees of San Diego, he is excited to work in such a diverse, energetic and academically productive division. His main academic and administrative interests include fellow, resident and medical student education and mentoring, global health, formerly assisted with billing, coding and documentation initiatives for the ED and the former Medical Director for CNMC Satellite ED at UMC. In 2022, he stepped down from his leadership roles within the division and is contemplating the next "big adventure." When not at work, he enjoys running, playing soccer and, when weather permits, training for and competing in triathlons.

DIVISION



Dave Magilner, MD

dimagilner@childrensnational.org

Undergrad: Dartmouth College

Residency: Albert Einstein Healthcare Network

Med School: Harvard Medical School

Fellowship: Children's Hospital Colorado

David grew up in Philadelphia, and as challenging as it is, he still has a place in his heart for Philly sports teams. He was educated and did residency on the east coast, then headed west for fellowship in Denver, then farther west for his first job at Mary Bridge Children's Hospital in Tacoma, WA. He moved to DC after a 10-year stint at Wake Forest Baptist health, where he founded and directed the PEM fellowship program. He lives in Columbia Heights with his border collie mix and can be seen on the ultimate (Frisbee) field most days he isn't working.



A.C. Maxwell, MD

amaxwell1@childrensnational.org

Undergrad: Hendrix College

Residency: LSU-Shreveport (EM)

Med School: University of Arkansas

Fellowship: UT-Memphis (PEM), Columbia (US)

Maxwell joined our faculty in Spring of 2017, having completed EM residency, PEM fellowship and a PEM US fellowship. Maxwell balances their time between practicing General Emergency Medicine and Pediatric Emergency Medicine while expanding pediatric point-of-care US training for trainees. In addition, Maxwell is passionate about LGBTQ (trans/nonbinary specific health) as well as harm reduction and is an active volunteer for several organizations in the community that serve these populations.



Nichole McCollum, MD

mmcollum@childrensnational.org

Undergrad: University of Georgia

Residency: Emory

Med School: Mercer University

Fellowship: Children's National

Nichole spent most of her life in Georgia before moving to DC after residency. She worked at CNH in the ED as a clinical associate before starting PEM fellowship. Her research interests include quality improvement, patient safety and provider wellness. Outside of work she enjoys spending time with family! She and her husband have two daughters, Josie(3y) and Abby (3m), and a dramatic furchild named Cain (11 years). She loves traveling, cooking, college football (Go Dawgs!), the peloton and being active.



Mandisa McIver, MD

mamciver@childrensnational.org

Undergrad: Oakwood

Residency: Bronx Jacobi Medical Center

Med School: Loma Linda

Fellowship: Schneider Children's (LIJ)

Mandisa is originally from Maryland but like many others, left the comforts of home after high school to pursue a career in medicine. Her path has taken her to Oakwood University in Alabama, Loma Linda University School of Medicine in California, Jacobi Medical Center in Bronx, NY for pediatric residency, and Long Island Jewish Medical Center for PEM fellowship. Upon completion of her training, she accepted a position at UNC in Chapel Hill to work as a PEM attending for 5 years. There, she led a QI project in asthma care in the ED and was selected to participate in a junior faculty leadership program. She is married, with 3 children. Although they enjoyed their time in North Carolina, Mandisa and her family decided to move back home to Maryland in 2016. Since joining the PEM team at Children's National Hospital, she has worked on a QI project focused on improving care in anaphylaxis patients in the pediatric ED

in addition to working with the Patient Experience Leadership Team. In her free time, she enjoys reading books, participation in community outreach, working with youth groups, and spending time with her family. She has taken up running as a hobby leading her to run several half marathons, one full marathon and is now training for her first triathlon.

DIVISION

**Kenneth McKinley, MD**

Assistant Director, ED Data Analytics and Informatics

kmckinley@childrensnational.org

Undergrad: Harvard

Med School: University of Pennsylvania

Residency: Columbia

Fellowship: Columbia

At the time of this writing, Kenny is 12,566 days old. He grew up in Danville, PA – the smallest but most beautiful of the numerous US towns and cities of that name. He enjoyed living in Boston, Philadelphia, and New York before landing in Washington, DC after fellowship. He met his wife in Buenos Aires during a college semester abroad and convinced her that board games and science are cool. Kenny's research interest is in the use of computer models to evaluate the impact of system changes on patient flow and care delivery.

**Jillian Nickerson, MD MS, UMC**

Medical Director, Associate PEM Fellowship Director

jnickerso2@childrensnational.org

Undergrad: Brown

Med School: Mount Sinai

Residency: EM, Mount Sinai Hospital, NY

Fellowship: Children's National

I grew up in Southern California, which explains my sunny disposition, but spent 10 years in New York including a residency in Emergency Medicine, where I developed some grit. I completed fellowship here at Children's National and then spent a year working in a rural emergency department in Southern Maryland caring for both adults and children. I love our community site because of the chance to practice emergency medicine without all of the consultants right at your fingertips and the important care we provide to the children of SouthEast DC. I am also passionate about medical education and improving the care of all children seen in the community. I live in Capitol Hill in DC and love to explore with my three rambunctious boys, Saul, Ira and Lenny, my husband, Colin, and our sweet pup, Sadie. We love checking out playgrounds, hiking trails, and running on the mall. Oh, and all of the amazing restaurants DC has to offer!

**Karen O'Connell, MD, MEd**

koconnel@childrensnational.org

Undergrad: Duke

Med School: Eastern Virginia

Residency: Schneider Children's (LJ)

Fellowship: CHOP

Karen is one of our PEM attendings and has been at Children's since 2005. She has served as the Director of Patient Safety for the Emergency Medicine and Trauma Center since 2011 and the Associate Region V Pediatric Medical Director for the state of Maryland with MIEMSS since 2007. Karen is an active member of the PECARN research collaborative and served as the site PI. Her personal research interests include medical and trauma resuscitation process improvement, patient safety, and family presence in the emergency setting. She lives in southern Maryland with her husband (Paul Manicone, MD Hospitalist at Children's), two children Gabe and Alivia, and 20+ farm animals. Her passions include equestrian sports, gardening, reading, and midwifery involving farm animals. In her 'zen moments,' she hangs out with the bugs in her garden and pulls ticks off her children.

**Shilpa Patel, MD, MPH**

Medical Director, IMPACT DC Asthma Clinic

spatel@childrensnational.org

Undergrad: Johns Hopkins

Med School: Penn State

Residency: Children's National

Fellowship: Children's National

Raised in Arizona, Shilpa moved to the east coast for college, where she met her husband, Anand. She joined CNH as a community track resident and stayed on as a chief resident. Before coming back to CNMC as a fellow, she was lucky enough to spend a year in Old San Juan, Puerto Rico. She is the medical director and sees patients for the IMPACT DC Asthma Clinic. Her research interests include mapping and modeling, local disease/surveillance and ED-based public health preventions in the areas of firearm safety, suicide prevention and asthma. She also enjoys the intersection of tech and medicine. Shilpa, Anand, and their kids, Ashvini(17), Nayathi(14) and Nishanth(8), live in Bethesda. (pic: my 14yo teaching me how to do a computer selfie)

DIVISION



Asha Payne, MD, MPH, Medical Director, Doctors Community Hospital
aspayne@childrensnational.org
Undergrad: Columbia Med School: Duke
Residency: Duke Fellowship: Children's National

Originally from Kingston, Jamaica, Asha grew up in Long Island, NY. Along her career path, she was a high school biology and chemistry teacher in Houston and picked up an MPH in medical school. She joined our faculty in 2011 and completed the final year of her CHRCDA (institutional K12 award), working on the role of sex steroids and asthma in 2013. She now works on several Improvement Science initiatives for the department and the hospital. In 2018, she became the Director of the Quality and Safety Academy which supported the academic productivity of QI trained faculty and staff. Most recently, she became the Medical Director of the Pediatric Emergency Department at Cedar Hill Regional Medical Center. In her free time, she enjoys international travel, working out, and exploring new places to dine. As a former bartender, she also enjoys making her own cocktails.



Jay Pershad, MD
jpershad@childrensnational.org
Undergrad: University of Mumbai Med School: University of Mumbai
Residency: Wayne State Fellowship: University of Alabama

I attended University of Mumbai medical school, Wayne State University for pediatric residency and UAB for my fellowship. I was previously at the University of Tennessee Health Science Center & Le Bonheur Children's Hospital, prior to joining the CN family. I'm a sports talk show junkie & a closet Patriots fan, intrigued by their coach's leadership style & team's consistent performance over the last decade! Otherwise, I enjoy spending time with family & listening to podcasts, while taking a walk in the park. My beautiful wife Rita and I are proud parents of two independent thinking, bright, hardworking girls. We became empty nesters last fall & are slowly adjusting to the change. I am humbled each day by the opportunity to work with an incredibly talented team of faculty, fellows, advanced practice providers and staff in our division. At CN, you will receive a superior education & a clinical experience that will prepare you for a career in any practice setting - community or academic & be able to manage varying levels of patient acuity. We strongly believe that your work life balance is the key to our success as a division.



Michael Quinn, MD, Program Medical Director, Division of Transport Medicine
mquinn@childrensnational.org
Undergrad: Georgetown Med School: Georgetown
Residency: Maryland Fellowship: NYU

Dr. Quinn serves as Medical Director of Transport Medicine. He participates in supervision and teaching of residents and medical students during their clinical rotations. He is also involved in the department's educational outreach activities, most recently lecturing on toxicology for the CNMC Pediatric Board Review Course. He and his wife have two adult sons. Growing up in this area, the family often went camping, during which Mike took along his bicycle to ride the roads and trails.



Dennis Ren, MD
dmren2@childrensnational.org
Undergrad: UC Berkeley Med School: Tulane University
Residency: Children's National Fellowship: Children's National

Dennis grew up in the San Francisco Bay Area. After undergrad, he spent time as an AmeriCorps volunteer in Oakland, CA before heading to medical school in New Orleans. He completed his pediatric residency and pediatric emergency medicine fellowship at Children's National. His interests include FOAMed, medical education, disaster preparedness, artificial intelligence, and science communication. He currently hosts the critical appraisal podcast, SGEMPeds, in collaboration with The Skeptics' Guide to Emergency Medicine and Ready.Pre.Go!, the podcast from the Pediatric Pandemic Network. He has collaborated with other FOAMed creators like, First10EM, Don't Forget the Bubbles, PEM Currents, and PedsRAP. Outside the hospital, he enjoys spending time with his wife and kids.

DIVISION



Alicia Rolin, MD

arolin@childrensnational.org

Undergrad: McGill University

Med School: Brown University

Residency: University of Michigan

My family moved to the US right before I was born, and I spent much of my childhood flying back and forth between Brussels and New York. As an adult, I have continued traveling and have moved from city to city more times than I can count. DC is my first repeat city and I am very glad to be back in the capital after 10 years of being away! My clinical interests include adolescent health, health disparities, and working in resource-limited communities (particularly right here in the US). Outside of work, you can typically find me biking, hiking, or stalking all the adorable pups at the dog park.



Jeremy Root, MD, Director of Scheduling

jroot@childrensnational.org

Undergrad: University of Virginia

Residency: Children's Hospital of Pittsburgh

Med School: Case Western

Fellowship: Children's National

I spent the formative years of my youth in Burke (Northern, VA) and hence have a diehard love for all things related to DC sports. As a former undergraduate sports writer and Wahoo alum, I am also a dedicated Virginia Cavaliers fan. I spent one year of bench research at the NIH prior to my semi "Midwest" stops in Cleveland for medical school and in Pittsburgh for residency, before returning home to the DMV. Partially explaining my field of choice of pediatric emergency medicine, I have a love of most things active, and I enjoy taking advantage of the great outdoor weather in DC with running, biking, DC sports leagues and Capitol Hill adventures with my wife and 3 young children. My research interests include acute concussion management and prolonged concussion symptoms.



Alexandra Rucker, MD, UMC Assistant Medical Director

arucker@childrensnational.org

Undergrad: George Washington

Residency: Children's National

Med School: George Washington

Fellowship: Children's National

Alex finished fellowship in 2009 after 2 years working as an associate in the ED. Alex is a life-long Washingtonian and, ah yes, a long-suffering Redskins fan. Her academic interests include fever without source, health-related social problems, and health disparities. Her hobbies are cooking, trivia and photography. In her spare time, Alex can be found watching sitcoms, training for obstacle courses and finding new recipes to satisfy her finicky family. She can also be found on endless late-night walks with her beagle, Charlie.



Joseph Shapiro MD, HEC-C

joseph.shapiro@childrensnational.org

Undergrad: Cornell University

Residency: Children's National

Med School: George Washington University

Fellowship: Boston Medical Center

Joe is a third generation, born and raised Washingtonian. He graduated from District of Columbia Public Schools, went to Cornell for college, and returned for medical school at GWU and pediatrics residency here at Children's National. After a stint in Boston for PEM fellowship, he is excited to be back in my hometown. He lives near the hospital in Mount Pleasant with his wife Erica and son Elijah. His academic work is in clinical ethics. He holds a graduate certificate in pediatric bioethics from the Children's Mercy Bioethics Center and the Healthcare Ethics Consultant-Certified (HEC-C) credential from the American Society of Bioethics and Humanities (ASBH) in recognition of 400 hours of clinical ethics practice and mastery of the core competencies required to facilitate clinical ethics consults. Outside the ED he serves as the Associate Director of the hospital Ethics Program which provides clinical ethics consults and ethics education throughout the institution. The Ethics Program has great opportunities for trainees, so please reach out to him if you are interested in discussing how ethics could be a part of your fellowship in DC!

DIVISION

**Haroon Shaukat, MD**

Director of ED Simulation, Co-Director of Resident and Medical Student Education, Director of ED Simulation
hshaukat2@childrensnational.org
Undergrad: University of Maryland
Residency: Goryeb's Children's
Med School: American University of the Caribbean
Fellowship: Children's National

Haroon was born and raised in Silver Spring, Maryland. After time away, he returned to the area for fellowship and stayed on as an attending. He is part of the ED Education Team with his role of Co-director of resident and medical student education, Faculty Advisor/Host of PEMAcademy, a free- open-access medical education (FOAMed) platform relevant to pediatric emergency medicine, and in charge of simulation in the emergency department for all types of learners. When he is not spending his time working, he spends it with his wife and two children bumming around!

**Amanda Stewart, MD, Associate Director of ED Advocacy and Health Policy**

AMSTEWART@childrensnational.org
Undergrad: UCLA
Residency: Boston Combined Residency Program
Med school: University of Pennsylvania
Fellowship: Boston Children's Hospital

Amanda (she/her) joined Children's National in 2023 from Boston Children's Hospital, where she completed her pediatrics residency, PEM fellowship, as well as an Advocacy and Public Policy fellowship. In addition to working in the ED, she served as the Lead Physician for Clinician Advocacy in the Boston Children's Hospital Office of Government Relations. She serves at the Director of the Leadership in Advocacy, Under-Resourced Communities, and Health Equity (LAUnCH) Track for the pediatric residency program, and is the Associate Director of Advocacy and Health Policy for the Division of Emergency Medicine. Her research is focused on justice-involved youth, child and family homelessness and other health-related social needs. She has been involved in legislative advocacy around addressing housing instability, food insecurity, insurance coverage for immigrant children, improving the pediatric behavioral healthcare system, and other policy solutions to address adverse social determinants of health for children and families.

**Rosemary Thomas-Mohtat, MD, Director of Emergency Ultrasound**

rthomasm@childrensnational.org
Undergrad: CUNY Brooklyn College BA/MD
Residency: Children's Hospital of Pittsburgh
Med School: SUNY Downstate
Fellowship: Children's National (PEM), GWU (US)

I've lived an adventurous life both geographically and professionally. I grew up an army brat in India living in 5 cities in my ten years there, then schooling in the many boroughs of NYC. Along the way I learned a lot of languages, finally settling on Spanish. My professional journey began with residency and a year of private practice in Pittsburgh, followed by Pediatric Nephrology fellowship in the Bronx and a year of genetics research at Columbia University, all the while working in a Peds ED in NYC. It was there that I found my true calling! I graduated PEM Fellowship here at CNH in 2015, and a one-year Point of Care Ultrasound (POCUS) Fellowship (GWU and CNMC) in 2016. I am an enthusiastic champion of POCUS! In my gap year after residency, I hiked the Inca Trail to Macchu Picchu and got certified in scuba on the Great Barrier Reef. For our honeymoon, my husband and I did a "almost around the world" tour, climbing Mt. Kilimanjaro, visiting the mountain gorillas in Rwanda, the Taj Mahal and an ashram in India. We have an 13 yr old daughter and an 11yr old son.

**Theodore Trigylidas, MD**

ttrigylida@childrensnational.org
Undergrad: University of Ottawa
Residency: University of Maryland
Med School: St George's University
Fellowship: Children's Mercy

Theo was born and raised in Canada's capital in Ottawa. After completing medical school in Grenada, residency at University of Maryland and fellowship at Children's Mercy hospital, he determined he is naturally drawn to capital cities and is looking forward to joining CNMC faculty. Over the years, Theo has been a good luck charm to sports teams of the cities he's lived in (Giants 2012, Ravens 2013, Royals 2015) and is excited to bring more good fortune to DC. His research interests include injury prevention (firearm violence) and point-of-care ultrasound research. Outside of work, Theo enjoys playing guitar, recording music, playing in bands, and spending time with his dog, Jimi Hendrix.

DIVISION



Gisella Valderrama, MD., MEd

GVALDERRA2@childrensnational.org

Med School: Universidad de San Martin de Porres Facultad de Medicina Humana, Peru

Residency: Georgetown University

Fellowship: Cincinnati Children's

Gisella was born in Peru and pursued her pediatric residency at Georgetown University Hospital. Following this, she gained over five years of experience as an ED clinical associate at Children's National. Subsequently, she completed her Pediatric Emergency Medicine Fellowship at Cincinnati Children's Hospital. During her fellowship, she also earned a master's degree in medical education from the University of Cincinnati. She participated in the esteemed Quality Scholars program at the James M. Anderson Center for Health Systems Excellence, focusing on areas such as patient safety, healthcare delivery, and healthcare policy. This program provides strong methodologic training in health research and quality improvement methods and exposure to a wide range of high-impact areas of study, including innovation in healthcare. As an educator, Gisella developed a curriculum on quality improvement science for the Latin American Pediatric Emergency Society. This project was successfully implemented across five countries in the region, demonstrating the scale of her impact. She has initiated a new initiative involving five hospitals in Spain, further showcasing her ambition and commitment to improving healthcare systems.



Caleb Ward, MB BChir, MPH, EMSC-DC, Program Director, Associate ED Research Director

caward@childrensnational.org

Undergrad: University of Cambridge

Med School: University of Cambridge

Residency: John Hopkins

Fellowship: Children's National

I grew up in rural New Zealand (think the shire from Lord of the Rings), before moving to Cambridge, England for undergraduate and medical school (think Harry Potter-style dining halls). I completed 2 years of post-graduate training in London before moving to the US to pursue pediatric residency. I am interested in EMS and prehospital care of children. I am the Program Director for EMS for Children in Washington DC and am working on research projects looking at C-spine immobilization and care of low acuity patients by EMS. Outside of work, life is currently dominated by the small petting zoo we run at home (three kids < 10 y/o).



Emily Willner, MD, Director, Pediatric Acute and Urgent Care Fellowship

ewillner@childrensnational.org

Undergrad: Brandeis University

Med School: Harvard

Residency: Children's Hospital Boston/BMC

Fellowship: Children's Hospital LA

Emily grew up mostly in New Jersey, and had a long stint in Boston for undergrad, med school, and residency. She then made her way to Los Angeles where she thoroughly enjoyed the sunshine and the ocean (and did PEM fellowship) before returning to her East Coast roots. She currently lives in Capitol Hill, DC with her attorney/musician husband, 10 year old daughter and 7 year old son. Emily's academic interests are primarily in medical education and safety. She recently completed her Master's in Education, is a co-Director the Pediatric Acute Care Fellowship, and works on procedural and safety education for fellows (and residents), and enjoys teaching and mentoring trainees. Outside of work, Emily occupies herself by hiking, biking, growing a fickle city garden, yoga, and chasing two small children.



Sam Zhao, MD, MEd, Co-Director of Resident and Medical Student Education, Medical Student Clerkship Director, Professional Development Curriculum Lead, PEM Faculty Recruitment co-lead

szhao@childrensnational.org

Undergrad: University of Virginia

Med School: University of Virginia

Residency: Columbia

Fellowship: Children's National

Sam grew up in Richmond, VA and went to school in Charlottesville, VA. He took a bite of the Big Apple when he moved to NYC for residency, but all the karaoke bars and dollar pizza slices in the world couldn't keep him from coming back to the mid-Atlantic. Sam's research interests are in medical education, and he recently completed a Master's in Education at George Washington University. When he's not at work, he spends the majority of the time running, hiking, camping, and doing anything outdoors with his dog, Titan. He also plays the piano and annoys his friends by cracking awful puns.

FELLOWS



Chidimma Acholonu, MD

cacholonu@childrensnational.org

Undergrad: Rutgers University Med School: Morehouse School of Medicine

Residency: University of Chicago

Chidimma is a current first year fellow at Children's National. She completed her pediatric residency at University of Chicago where she also served as Chief Resident before transitioning to fellowship. She earned her medical degree from Morehouse School of Medicine in 2019 where she was actively involved with the Student National Medical Association (SNMA) and continues to work closely with medical students through SNMA. She is the current chair and trustee for the Post-Graduate Section of the National Medical Association and also serves as the Communication Chair for the Section on Minority Health, Equity and Inclusion for the AAP. In 2011, she earned her MPH from George Washington University with a concentration in Community-Oriented Primary Care, and afterwards continued to work in the school health space with DC, Baltimore, and Alexandria public schools before matriculating to medical school. She is excited to be back in DC for fellowship training at Children's National! Chidimma enjoys getting outside on her road bike, exploring the amazing trails around the area, curating the perfect brunch experience, and all things Philadelphia sports! She is looking forward to the amazing opportunities at Children's National and continuing to grow her skills and expertise in emergency medicine and community advocacy.

CONTACT ME ABOUT: all things DC living. I've lived in every part of the DMV at least once!



Jamal Alanni, MD

JALANNI@childrensnational.org

Undergrad: McGill University Med School: Weill Cornell Medicine - Qatar

Residency: Cincinnati Children's Hospital Medical Center

Hi everyone! I'm originally from Aleppo, Syria but grew up all over the place. I was in Kuwait and Qatar, before moving to Montreal for college, then back to Qatar for medical school and then Cincinnati where I completed my pediatric residency and now I'm here in DC for PEM fellowship! Within medicine, I'm interested in global health, medical education and POCUS. Outside of medicine, I love traveling, cooking, trying out new restaurants and going on neighborhood/cafe crawls – fall in DC can't come soon enough! I equally love spending a night in with whatever book I'm reading at the moment with some good reading music.

CONTACT ME ABOUT: Living in DC, Arab/Muslim community in DC, transitioning into 1st year PEM fellowship, all things food and cafes.



Adenike Animasaun, MD

AANIMASAUN@childrensnational.org

Undergrad: Rutgers University-New Brunswick University Med School: Cooper Medical School of Rowan

Residency: Northwell-LIJ Cohen Children's Medical Center

I was born in Osun State, Nigeria and moved to Easton, PA when I was 8 years old. Grew up in Easton then became an unofficial Jersey girl when I moved to New Jersey for undergrad and medical school and spent over 8 years there. I then moved to Queens, NY for residency at Cohen Children's Medical Center. I will forever be a Philadelphia sport fan though (Go Eagles!). Some of my interests are social determinants of health, global and immigrant health. I love traveling, learning about new cultures, and trying out new restaurants. I'm very excited to be moving to DC because there is so much to do! I'm looking forward to exploring all the things DC has to offer and always looking for recommendations on new things to try!

CONTACT ME ABOUT: global health, immigration health, living in DC.

FELLOWS

**Maria Elena Arrate, DO**

MARRATE@childrensnational.org

Undergrad: Florida Atlantic University Med School: Nova Southeastern

Residency: Nicklaus Children's Hospital

I was born in Cuba and raised in Florida, having done all of my education and training there. I was excited to leave the sunshine state and experience all four seasons while living in DC (hoping I packed enough winter gear). My academic interests include global health and Medical Education. Outside of work, I enjoy spending time with family and friends, hosting wine nights, going to happy hour, and exploring my new city.

CONTACT ME ABOUT: life in DC, fellow schedule in a long-distance relationship, interest in global health opportunities.

**Sarah Benett, MD, MS**

Sarah.benett@childrensnational.org

Undergrad: Johns Hopkins University

Grad School: Duke University

Medical School: Medical College of Wisconsin

Residency: Johns Hopkins Children's Center

Hi! I grew up in the San Francisco Bay Area before completing her undergraduate degree in Public Health Studies at Johns Hopkins. I then went on to do a Masters in Biomedical Sciences at Duke and worked for a year at Cedars Sinai in LA doing breast and ovarian cancer research. I then decided to see what the Midwest was about and completed my medical school at the Medical College of Wisconsin and Milwaukee before finding my way back to Baltimore for residency. My research interests include global health and procedural sedation curriculum development. When not in the hospital, I love to play soccer, hike, try new restaurants, hang out with friends, and play with my cat, Lorraine.

CONTACT ME ABOUT: global health, living away from family

**David Branson, MD**

DBRANSON@childrensnational.org

Undergrad: Virginia Tech

Med School: Virginia Commonwealth University

Residency: University of Utah

I was born on Yokosuka Navy Base in Japan but grew up mostly in Northern Virginia, just outside of DC! I did college at Virginia Tech and medical school at Virginia Commonwealth University before heading out to Utah for pediatric residency at the University of Utah. I'm very excited to be back close to family and friends in the area and am loving DC! I am super stoked to be at such an exciting program that values fellow autonomy and education in a supportive environment at Children's National. Some of my academic interests include social determinants of health and combatting human trafficking in the medical setting. Outside of work, I love to cook (I LOVE making handmade pasta on a day off), spend time outside (I love triathlons, and in Utah I learned how to ski and mountain bike and rock climb), and try new restaurants!

CONTACT ME ABOUT: moving from other parts of the country to DC, choosing a research topic, or navigating the transition from resident to fellow role

**Kammeron Brissett, MD**

kbrisset@childrensnational.org

Undergrad: The Ohio State University Med School: Northeast Ohio Medical University

Residency: Rainbow Babies & Children's

I was born in Cleveland, Ohio, and remained an Ohio girl for my education and training before moving to DC for fellowship! Professionally, I am interested in social determinants of health and mitigating healthcare disparities through advocacy. Personally, I love to nap or watch documentaries/true crime. When I venture outdoors, I enjoy brunching, dancing, and hopping on planes to explore food, music, and the beauty of other cultures!

CONTACT ME ABOUT: community outreach and advocacy

FELLOWS



Nico Dimenstein, MD, MPH

NDIMENSTEI@childrensnational.org

Undergrad: Iowa State University

Med School: University of Iowa

Graduate School: Johns Hopkins

Residency: University of Washington

Hey, I'm Nico (he/him). I'm now a second year PEM fellow, interested in LGBTQ+ health and language equity. My current research with Dr. Goyal and her team is ED based PrEP initiation and I've started a group for LGBTQ+ trainees called BearPRIDE for residents and fellows here at Children's National that has been really rewarding and exciting. Let me know if you'd like to join or have questions about LGBTQ+ life at the hospital. I'm also grateful to be on the east coast again, where my family now lives. Outside of work, I love going to concerts, hitting the gym, and recharging my social battery with my dog Wall-e and my partner, in that order, who are both still in Seattle.

CONTACT ME ABOUT: moving across the country for fellowship, maintaining long-distance relationships, LGBTQ+ health at Children's National, and research



Brittany Fitzpatrick, MD

BFITZPATRI@childrensnational.org

Undergrad: George Mason University

Residency: St. Louis Children's Hospital

Med School: St. Louis School of Medicine

Hi! I was born and raised in Richmond, VA. I ventured out to St. Louis for medical school, met my husband and stayed for residency and a chief year. I surprisingly liked the midwest but I'm excited to be back on the east coast as a PEM fellow! Academically, I'm super passionate about health equity, community health, advocacy and eliminating health disparities. Children's National seemed like the perfect place for me and I can't wait to see how my career will transform here. I spend most of my free time with my rambunctious toddler who loves to try new restaurants, parks, and museums. When I'm not in Mommy mode, I love boxing workouts, a good brunch, happy hours, rooftops and live music scenes.

CONTACT ME ABOUT: parenting/family life, living in Virginia



Gabrielle Jasmin, DO, MS

gjasmin@childrensnational.org

Undergrad: Stony Brook University

Med School: Touro College of Osteopathic Medicine Harlem

Residency: Children's Hospital at Montefiore

Hi Everyone! I am from Rockland County, New York, about 30 miles north of Manhattan. I love music, being outside and all things food related! After residency, I spent 2 years working as an ED Pediatrician at CHOP and am very excited to continue my training as a PEM fellow at Children's National. My professional interests include social determinants of health education, simulation and improving health literacy within our community. Outside of the hospital you can catch me at the gym, exploring good eats in the DMV area or dancing to some great music.

CONTACT ME ABOUT: community outreach, QI and advocacy



Zara Ibrahim, MD

zibrahim1@childrensnational.org

Undergrad: Wellesley College

Med School: Georgetown University School of Medicine

Residency: Children's National Hospital

Zara grew up in northern Virginia (part of the DMV area), but has spent some time in Boston and NYC during her 6 years between undergrad and medical school. Research interests include AI applications in medicine as well as health equity. In her time off, Zara likes to cuddle with her toddler, read books, travel, go on long walks to explore DC's excellent bakery scene, and do HIIT workouts (to balance out the pastries).

CONTACT ME ABOUT: going through fellowship with a baby and any DC-related questions

FELLOWS



Katherine Ritter, MD

kritter@childrensnational.org

Undergrad: Northwestern University

Residency: Children's National

Med school: University of Illinois College of Medicine at Chicago

Hi all! I was born in Chicago and spent the first 28 years of my life living within sight of the Chicago skyline. I came to Children's National for residency and have been in D.C. ever since! After graduating residency, I spent a year as an ED pediatrician here at Children's National and am excited to be staying on as a fellow. I chose to stay at Children's because of the unparalleled breadth of clinical experience and the opportunity to be mentored by leaders in the field. When I'm not in the hospital, I love running, hiking, traveling, and generally spending time outdoors. Ask me about hikes and ski slopes within driving distance!

CONTACT ME ABOUT: taking time off and working between residency and fellowship



Zahur (Fatima) Sallman, MD

Zsallman@childrensnational.org

Undergrad: University of Maryland

Med School: University of Maryland School of Medicine

Residency: Children's Hospital of Michigan

I grew up all over the country—on both coasts and in the Midwest—before landing in Maryland for college and medical school. I met my husband during med school, and we couples matched into residency programs in Michigan where I did my pediatrics training. I then spent two years as an ER pediatrician at the Children's Hospital of Philadelphia, an experience that confirmed PEM was the right path for me. I'm excited to be back in the DMV area as a PEM fellow at Children's National! My current academic interests include medical education and finding ways to improve care for vulnerable populations—particularly patients with sickle cell disease. Outside of work, I love checking out new pizza places, painting, and spending time with friends and family (including keeping up with life with my toddler at home!)

CONTACT ME ABOUT: having family/kids in fellowship!



Jessica Williams, MD

Jwilliam19@childrensnational.org

Undergrad: Trinity College (CT)

Med School: The Ohio State University College of Medicine

Residency: Nationwide Children's Hospital

I'm originally from Boston, MA (Dorchester) and after med school and residency in Columbus, OH. I am so excited to be joining the Children's National team! I was attracted to the rich culture of the DMV and the large and busy ER! I love to salsa and bachata dance and I have plant babies (lots of them).

CONTACT ME ABOUT: all things schedules/chief-related questions and why I chose this program

STAFF



Billie Messersmith

bmessers@childrensnational.org

I'm from the Washington, DC area and I've been with Children's Hospital for over 30 years. I started at Children's as a manager in the Medical Records department when believe it or not it was all paper! I love working for Children's, I've been able to work part-time while raising my kids and now work remotely since we've moved outside of the DMV. Outside of work I'm mom to 2 boys and the proud grandma of 2- and 4-year-old grandsons that keep me on my toes. I love gardening, bike riding, and walking on the beach. Fun fact...I'm a bit of an adrenaline junkie and love roller coasters.



Hilda L. Rojas, ED Program Operations Lead

hrojas@childrensnational.org

Hilda has been with Children's since January of 1990 and joined the ED in 1997, always embracing the chaos with a smile. Originally from Venezuela, she initially visited Washington for a vacation but soon fell in love with the country, deciding to make it her home. With two daughters, Hilda proudly carries the title of grandmother to five amazing grandchildren, ages 21 to 2. Hilda enjoys weekend outings, movies, swimming and traveling. Fun fact: worked for about 3 years as a tip line operator for America's Most Wanted.



Lynette Myers, Program Coordinator

lmyers@childrensnational.org

Lynette is from DC and has been with Children's for 10 years. In her free time, she loves to travel and love all outdoor activities from hiking, biking, and fishing. Lynette feels like she is great at DIY projects around the house and believes she can build a house on her own. She has a very curious mind and is passionate about learning and exploring new aspects of life.



Bobbe Thomas, Clinical Research Program Director for the Emergency Medicine Department

TBThomas@childrensnational.org

As an employee of Children's National for 20 years, she has grown into her role as initially starting as a unit clerk in the ED. In her current position, as of March 31st, she is responsible for the budget, staff, operation, growth and coordination of research, programmatic and advocacy programs in the Emergency Medicine (ED), for our newly approved ED Research Core, and for the ED's undergraduate internship program. Additionally, she is grateful to have the opportunity to work with departments outside of the ED such as hematology, infectious disease, pulmonary, neurology, PICU, ICIU, endocrinology, psychiatry and others. She has a strong passion for pediatrics, emergency medicine and research. The ED PIs and research team energize her with their hard work ethic and dedication for caring for and improving the health of children.



Lauren Waterhouse, Program Lead for ED Quality, Safety, and Experience

lwaterho@childrensnational.org

Lauren Waterhouse grew up in rural Maryland and has lived in DC since coming to GW for college. She majored in Public Health and started working at Children's National shortly after graduation. After many years as a coordinator in the Division of Trauma and Burn Surgery, she was thrilled to move down the hall to the ED in the spring of 2022. She works on quality, safety, and patient/staff experience projects and is also part of the ED data analytics and ED ADOPT (order set) teams. She is especially interested in using data and data visualization to help providers make informed clinical and operational decisions, and she always wants to hear your ideas about how to make our ED better for patients, families, and staff! When not working, she is probably watching basketball or tennis, reading a book, or spending time outdoors in Rock Creek Park and other beautiful spots in DC.

FELLOWSHIP PUBLICATIONS

2021

Chisom Agbim Mentors: Jaclyn Kline Shilpa Patel	<ol style="list-style-type: none"> 1. Cohen JS, Agbim C, Hrdy M, Mottla ME, Goyal MK, Breslin K. Epinephrine autoinjector prescription filling after pediatric emergency department discharge. <i>Allergy Asthma Proc.</i> 2021 Mar 1;42(2):142-146. 2. Agbim C, Patel SJ, Brown K, Kline J. Practicing What We Teach: Increasing Inhaler Use for Mild Asthma in the Pediatric Emergency Department. <i>J Healthc Qual.</i> 2022 Jan-Feb 01;44(1):40-49. 3. Agbim C, Fornari M, Willner E, Isbey S, Berkowitz D, Palacios K, Badolato G, McIver M. Improving Care at Emergency Department Discharge for Pediatric Patients with Anaphylaxis Using a Quality Improvement Framework. <i>Pediatr Qual Saf.</i> 2022 Sep 8;7(5):e589.
Angelica Despain Mentors: Kristen Breslin Iannnis Koutrlis Jim Chamberlain	<ol style="list-style-type: none"> 1. DesPain AW, Chapman J, Shaukat H. Oculocardiac Reflex in a Pediatric Trauma Patient. <i>Pediatr Emerg Care.</i> 2020 Jul;36(7):e399-e401. 2. Farrell PR, Hornung L, Farmer P, DesPain AW, Kim E, Pearman R, Neway B, Serrette A, Sehgal S, Heubi JE, Lin TK, Nathan JD, Vitale DS, Abu-El-Haija M. Who's at Risk? A Prognostic Model for Severity Prediction in Pediatric Acute Pancreatitis. <i>J Pediatr Gastroenterol Nutr.</i> 2020 Oct;71(4):536-542. PMID: 32541203. 3. DesPain AW, Gutman CK, Cruz AT, Aronson PL, Chamberlain JM, Chang TP, Florin TA, Kaplan RL, Nigrovic LE, Pruitt CM, Thompson AD, Gonzalez VM, Mistry RD. Research environment and resources to support pediatric emergency medicine fellow research. <i>AEM Educ Train.</i> 2021 Mar 9;5(3):e10585. 4. Despain AW, Pearman R, Hamdy R, Badolato G, Campos J, Breslin K. Impact of CSF meningitis/encephalitis panel on resources use for febrile well-appearing infants. <i>Hospital Pediatrics.</i> In press.
Mary Beth Howard Mentors: Lenore Jarvis Katie Donnelly Sadiqa Kendi	<ol style="list-style-type: none"> 1. Kendi S, Howard MB, Mohamed MA, Eaddy S, Chamberlain JM. So much nuance: A qualitative analysis of parental perspectives on child passenger safety. <i>Traffic Inj Prev.</i> 2021;22(3):224-229. Epub 2021 Mar 4. PMID: 33661063. 2. Howard MB, Basu S, Sherwin E, Cohen JS. Triple threat: New presentation with diabetic ketoacidosis, COVID-19, and cardiac arrhythmias. <i>Am J Emerg Med.</i> 2021 Apr 19:S0735-6757(21)00331-4. Epub ahead of print. PMID: 33895040; PMCID: PMC8053600. 3. Howard MB, McCollum N, Alberto EC, Kotler H, Mottla ME, Tiusaba L, Keller S, Marsic I, Sarcevic A, Burd RS, O'Connell KJ. Association of Ventilation during Initial Trauma Resuscitation for Traumatic Brain Injury and Post-Traumatic Outcomes: A Systematic Review. <i>PreHosp Disaster Med.</i> 2021 Aug;36(4):460-465. 4. Howard MB, Jarvis LR, Badolato GM, Parrish BT, Donnelly KA. Variations in Safe Sleep Practices and Beliefs: Knowledge is not Enough. <i>Matern Child Health J.</i> 2022 May; 26 (5): 1059-1066. 5. Howard MB, Guse S. Liquid Nicotine, E-Cigarettes, and Vaping: Information for the Pediatric Emergency Medicine Provider. <i>Pediatr Emerg Care.</i> 2022 Aug 1; 38(8):399-403
Nathaniel Jones Mentors: Monika Goyal Jo Cohen	<ol style="list-style-type: none"> 1. Jones NK, Badolato GM, Boyle MD, Goyal MK. Racial/ethnic disparities in management of acute gastroenteritis in a pediatric emergency department. <i>Acad Emerg Med.</i> 2021 Sep; 28(9):1067-1069. 2. Morrison S, Jones NK, Koutroulis I, Chamberlain J. A Prospective Look at Career Aspirations Among Pediatric Emergency Medicine Trainees. <i>Pediatr Emerg Care.</i> 2021 Dec 1; 37(12):e974-e976.

FELLOWSHIP PUBLICATIONS

2021	
Jillian Nickerson (2yr EM-PEM) Mentors: Sam Zhao Katie Donnelly	<ol style="list-style-type: none"> Nickerson J, Webb T, Boehm L, Neher J, Wong L, LaMonica J, Bentley S. Difficult Delivery and Neonatal Resuscitation: A Novel Simulation for Emergency Medicine Residents. <i>West J Emerg Med</i>. 2019 Dec 9;21(1):102-107. Nickerson J, McCollum N, Abdulrahman E, Marko K, Soghier L, Rucker A, Madati J, Zhao X. Asynchronous Learning Module for Pediatric Emergency Medicine Physicians on How to Manage Vaginal Birth and Neonatal Resuscitation in the Emergency Department. <i>Pediatr Emerg Care</i>. 2023 Jun 1;39(6):397-401. Nickerson J, Ghatak-Roy A, Donnelly KA, Thomas AA, Robinson D, Roszczynialski KN, Zhao X. The Current State of Pediatric Emergency Medicine Training in Emergency Medicine Residencies. <i>Pediatr Emerg Care</i>. 2023 Mar 1;39(3):167-172.
2022	
Dennis Ren Mentors: Pavan Zaveri Jim Chamberlain	<ol style="list-style-type: none"> Ren DM, Abrams A, Banigan M, Batabyal R, Chamberlain JM, Garrow A, Izem R, Nicholson L, Ottolini M, Patterson M, Sarnacki R, Walsh HA, Zaveri P. Evaluation of Communication and Safety Behaviors During Hospital-Wide Code Response Simulation. <i>Simul Healthc</i>. 2022 Feb 1;17(1):e45-e50. Markow MB, Ren D, Andrews A, DiFazio M. Isolated Unilateral Ptosis in a 5-year-old Boy. <i>Pediatr Rev</i>. 2022 Dec 1;43(12):721-723. doi: 10.1542/pir.2020-004176. PMID: 36450634. Zaveri PP, Clark S, Kan K, Lee BR, Naik V, Opel DJ, Popovsky E, Ren D, Simpson J, Watts J, White ML, Myers AL. Rapid Development and Testing of a COVID-19 Vaccine Curriculum for Pediatricians. <i>Acad Pediatr</i>. 2023 May-Jun;23(4):790-799. doi: 10.1016/j.acap.2022.09.010. Epub 2022 Sep 16. PMID: 36122826. FOAMed: multiple articles/ posts.
Nichole McCollum Mentors: Jaclyn Kline	<ol style="list-style-type: none"> McCollum N, Guse S. Neck Trauma: Cervical Spine, Seatbelt Sign, and Penetrating Palate Injuries. <i>Emerg Med Clin North Am</i>. 2021 Aug;39(3):573-588. Howard MB, McCollum N, Alberto EC, Kotler H, Mottla ME, Tiusaba L, Keller S, Marsic I, Sarcevic A, Burd RS, O'Connell KJ. Association of Ventilation during Initial Trauma Resuscitation for Traumatic Brain Injury and Post-Traumatic Outcomes: A Systematic Review. <i>Prehosp Disaster Med</i>. 2021 Aug;36(4):460-465. Kline JN, Isbey SC, McCollum N, Falk MJ, Gutierrez CE, Guse SE, Harahsheh AS, Brown KM, Chamberlain JM, Breslin KA. Identifying pediatric patients with multisystem inflammatory syndrome in children presenting to a pediatric emergency department. <i>Am J Emerg Med</i>. 2022 Jan; 51:69-75. Nickerson J, McCollum N, Abdulrahman E, Marko K, Soghier L, Rucker A, Madati J, Zhao X. Asynchronous Learning Module for Pediatric Emergency Medicine Physicians on How to Manage Vaginal Birth and Neonatal Resuscitation in the Emergency Department. <i>Pediatr Emerg Care</i>. 2023 Jun 1;39(6):397-401.
Brian Lee Mentors: Jim Chamberlain Emily Willner Sam Zhao	<ol style="list-style-type: none"> Alhinai Z, Elahi M, Park S, Foo B, Lee BE, Chapin K, Koster M, Sanchez PJ, & Michelow IC. Prediction of Adverse Outcomes in Pediatric Acute Hematogenous Osteomyelitis. <i>Clinical Infectious Diseases</i>. 2020. https://doi.org/10.1093/cid/ciaa211. Shen BH, Aoyama B, Lee B. Inpatient albuterol spacing as an indicator of discharge readiness. <i>J Asthma</i>. 2023 Jan;60(1):57-62. doi: 10.1080/02770903.2021.2025390. Epub 2022 Jan 12. PMID: 34978948. Green RS, Sartori LF, Lee BE, Linn AR, Samuels MR, Florin TA, Aronson PL, Chamberlain JM, Michelson KA, Nigrovic LE. Prevalence and Management of Invasive Bacterial Infections in Febrile Infants Ages 2 to 6 Months. <i>Ann Emerg Med</i>. 2022 Dec;80(6):499-506. doi: 10.1016/j.annemergmed.2022.06.014. Epub 2022 Aug 6. PMID: 35940993. Hrdy M, Faig W, Ren D, Lee B, Tay KY, Guttadauria B, Zaveri P, Lavoie M, Zhao X. A Comparison of Telesimulation Using the Virtual Resus Room and In Situ Simulation in Pediatric Emergency Medicine. <i>Pediatr Emerg Care</i>. 2024 Aug 26. Lee BE, Dham N, Khan S, Chen L, McCarter RJ, Chamberlain J. Risk Factors for Myocarditis and Dilated Cardiomyopathy in Children Presenting to the Emergency Department- manuscript in progress

FELLOWSHIP PUBLICATIONS

2022	
Marci Fornari Mentors: Katie Donnelly Simone Lawson	<ol style="list-style-type: none"> Fornari MJ, Lawson SL. Pediatric Blunt Abdominal Trauma and Point-of-Care Ultrasound. <i>Pediatr Emerg Care</i>. 2021 Dec 1;37(12):624-629. Fornari M, Cohen J, Birdsong R. AIDS Presenting in an Adolescent Male With Persistent Conjunctivitis and Eye Pain. <i>J Adolesc Health</i>. 2021 Apr;68(4):827-829. Donnelly KA, Rucker A, Boyle MD, Fornari MJ, Badolato GM, Goyal MK. Experiencing Bullying Is Associated With Firearm Access, Weapon Carriage, Depression, Marijuana Use, and Justice Involvement in Adolescents. <i>Pediatr Emerg Care</i>. 2022 Feb 1;38(2):e918-e923. Fornari MJ, Badolato GM, Rao K, Goyal MK, McCarter R, Donnelly KA. Violent Injury as a Predictor of Subsequent Assault-Related ED Visits in Adolescents- manuscript in progress
2023	
Tim Carr Mentor: Jaclyn Kline	<ol style="list-style-type: none"> Martinez EM, Carr DT, Mullan PC, Rogers LE, Howlett-Holley WL, McGehee CA, Mangum CD, Godambe SA. Improving Equity of Care for Patients with Limited English Proficiency Using Quality Improvement Methodology. <i>Pediatr Qual Saf</i>. 2021 Dec 15;6(6):e486.
Rachel Hatcliffe Mentors: Caleb Ward	<ol style="list-style-type: none"> Despain, A, Hatcliffe R. "Covid-19 Pandemic brings unexpected pediatric consequences." <i>Pediatric News</i>. MDEdge. April 2020 Ward C, Singletary J, Hatcliffe R, Colson C, Simpson J. Brown K, Chamberlain J. Emergency Medical Services Clinician's Perspectives on Pediatric Non-Transport. <i>Prehospital Emergency Care</i>, August 2022. Hatcliffe R, Ward C, Uppuluri M, Badolato G, Brown, K. Factors Associated with Prehospital Epinephrine Use in Pediatric Anaphylaxis: A Cross-sectional Study. –manuscript in progress
Harrison Hayward Mentor: Kristen Breslin	<ol style="list-style-type: none"> Hayward H, Chamberlain J, Breslin K. National Trends in Pediatric Electric Scooter injuries from 2011 to 2020.
Malek Mazzawi Mentors: Kristen Breslin Angela Maxwell	<ol style="list-style-type: none"> Call for Trainee-Authored Letters to the Editor: Honorable Mention (Academic Medicine) Mazzawi M, Uppuluri M, McKinley K, Berkowitz D, and Breslin K. Measuring Adherence to First-Line Antimicrobial Treatment for Presumed Urinary Tract Infections in the ED Mazzawi M, Maxwell A. Addressing the Healthcare Needs of Transgender Youth in the Emergency Department. <i>Pediatr Emerg Care</i>. 2024 Jun 1;40(6):486-491. doi: 10.1097/PEC.0000000000003194. PMID: 38815145. Dean P, Geis G, Hoehn EF, Lautz AJ, Edmunds K, Shah A, Zhang Y, Frey M, Boyd S, Nagler J, Miller KA, Neubrand TL, Cabrera N, Kopp TM, Wadih E, Kannikeswaran N, VanDeWall A, Hewett Brumberg EK, Donoghue A, Palladino L, O'Connell KJ, Mazzawi M, Tam DCF, Murray M, Kerrey B. High-risk criteria for the physiologically difficult paediatric airway: A multicenter, observational study to generate validity evidence. <i>Resuscitation</i>. 2023 Sep;190:109875. doi: 10.1016/j.resuscitation.2023.109875. Epub 2023 Jun 14. PMID: 37327848.
Walt Palmer Mentors: Jo Cohen Craig Futterman Monika Goyal	<ol style="list-style-type: none"> Pivovarov J. Pediatric minority patients less likely to undergo ED imaging. <i>Pediatric News</i>. February 5, 2021. Interview. https://www.mdedge.com/pediatrics/article/235600/injuries/pediatric-minority-patients-less-likely-undergo-ed-imaging Palmer W, Greeley SAW, Letourneau-Freiberg LR, Naylor RN. The Do-It-Yourself Artificial Pancreas. <i>Pediatric Annals</i>. 2021;50(7). Palmer W, Basu S, Badolato G, Chamberlain J, Futterman C, and Cohen J. Occult Hypoxemia in Critically Ill Children: A Single Center Retrospective Study. –manuscript in progress
2024	
Mickey Emmanuel Mentors: Monika Goyal	<ol style="list-style-type: none"> Emmanuel M, Margolis R, Badh R, Kachroo N, Teach SJ, Parikh K. Caregiver Language Preference and Health Care Utilization Among Children With Asthma. <i>Pediatrics</i>. 2023 Dec 1;152(6):e2023061869. doi: 10.1542/peds.2023-061869. PMID: 37964708.

FELLOWSHIP PUBLICATIONS

2024	
Brandon Kappy Mentors: Jim Chamberlain Sarah Isbey Kenny McKinley	<ol style="list-style-type: none"> 1. Kappy B, Lindgren C. Diagnosis and Acute Management of Hyperglycemic Hyperosmolar Syndrome in Children and Adolescents. <i>Pediatr Emerg Care</i>. 2023 Sep 1;39(9):721-725. doi: 10.1097/PEC.0000000000003022. PMID: 37642637. 2. Kappy B, McKinley K, Chamberlain J, Badolato GM, Podolsky RH, Bond G, Schultz TR, Isbey S. Leaving Without Being Seen From the Pediatric Emergency Department: A New Baseline. <i>J Emerg Med</i>. 2023 Sep;65(3):e237-e249. doi: 10.1016/j.jemermed.2023.05.019. Epub 2023 Jun 10. PMID: 37659902. 3. Kappy B, McKinley K, Chamberlain J, Isbey S. Response to "Diverging Trends in Left Without Being Seen Rates During the Pandemic Era: Emergency Department Length of Stay May Be a Key Factor". <i>J Emerg Med</i>. 2024 Apr;66(4):e547-e548. doi: 10.1016/j.jemermed.2023.11.013. PMID: 38580417. 4. Kappy B, Berkowitz D, Isbey S, Breslin K, McKinley K. Characteristics and patient impact of boarding in the pediatric emergency department, 2018-2022. <i>Am J Emerg Med</i>. 2024 Mar;77:139-146. doi: 10.1016/j.ajem.2023.12.022. Epub 2023 Dec 19. PMID: 38147701. 5. Stephens CQ, Newton C, Kappy B, Melhado CG, Fallat ME. Extreme Weather Injuries and Fatalities, 2006 to 2021. <i>JAMA Netw Open</i>. 2024 Aug1;7(8):e2429826. doi: 10.1001/jamanetworkopen.2024.29826. PMID: 39186269.
Jessica Hippolyte Mentors: Dewesh Agrawal Cara Lichtenstein Theiline Gborkorquellie	<ol style="list-style-type: none"> 1. Boogaard C, Hippolyte J. The Importance of Trauma-Informed Systems in Adverse Childhood Experiences Screening. <i>JSM Health Educ Prim Health Care</i>. 2022 Oct; 4(1): 1048. 2. Hippolyte J, Wright J, Barber A, Johnson T, Goyal M. A Multipronged approach to Achieving Racial Equity in Academic Pediatrics. Manuscript in Progress for Pediatrics. 3. Anum-Addo S, Hippolyte J, Barber A. Shifting the Paradigm in Workforce Diversity: Prioritizing an Inclusive Environment in GME. Finalizing Submission for Academic Medicine through Macy Foundation. 4. Hippolyte J, Agrawal D, Singletary J, Anyigbo C, Teach S, Batshaw M, Barber A. Promoting Inclusivity and Belonging for Residents from Background UIM. Finalizing Submission for Academic Medicine 5. Hippolyte J, Gborkorquellie T, Singletary J, Lichtenstein C. Faculty Health Equity Education Needs Assessment. Qualitative Study
Hannah Kotler Mentors: Amy Wolfe Kristen Breslin	<ol style="list-style-type: none"> 1. Gutman CK, Aronson PL, Singh NV, Pickett ML, Bouvay K, Green RS, Roach B, Kotler H, Chow JL, Hartford EA, Hincapie M, St Pierre-Hetz R, Kelly J, Sartori L, Hoffmann JA, Corboy JB, Bergmann KR, Akinsola B, Ford V, Tedford NJ, Tran TT, Gifford S, Thompson AD, Krack A, Piroutek MJ, Lucrezia S, Chung S, Chowdhury N, Jackson K, Cheng T, Pulcini CD, Kannikeswaran N, Truschel LL, Lin K, Chu J, Molyneaux ND, Duong M, Dingeldein L, Rose JA, Theiler C, Bhalodkar S, Powers E, Waseem M, Lababidi A, Yan X, Lou XY, Fernandez R, Lion KC. Race, Ethnicity, Language, and the Treatment of Low-Risk Febrile Infants. <i>JAMA Pediatr</i>. 2024 Jan 1;178(1):55-64. doi: 10.1001/jamapediatrics.2023.4890. 2. Gutman CK, Hartford EA, Gifford S, Ford V, Bouvay K, Pickett ML, Tran TT, Molyneaux Slade ND, Piroutek MJ, Chung S, Roach B, Hincapie M, Hoffmann JA, Lin K, Kotler H, Pulcini C, Rose JA, Bergmann KR, Cheng T, St Pierre Hetz R, Yan X, Lou XY, Fernandez R, Aronson PL, Lion KC; Pediatric Emergency Medicine Collaborative Research Committee Febrile Infants and Health Disparities Study Group. Management of race, ethnicity, and language data in the pediatric emergency department. <i>Acad Emerg Med</i>. 2024 May 29. doi: 10.1111/acem.14947. Epub ahead of print. PMID: 38808384. 3. Howard MB, McCollum N, Alberto EC, Kotler H, Mottla ME, Tiusaba L, Keller S, Marsic I, Sarcevic A, Burd RS, O'Connell KJ. Association of Ventilation during Initial Trauma Resuscitation for Traumatic Brain Injury and Post-Traumatic Outcomes: A Systematic Review. <i>Prehosp Disaster Med</i>. 2021 Aug;36(4):460-465. 4. Kotler H, Wolfe AHJ. "Death is Not a Dirty Word": a Qualitative Study of Emergency Department Clinicians' Communication Experiences when Caring for Patients with Life-limiting Diagnoses. Manuscript in progress

FELLOWSHIP PUBLICATIONS

2024	
Christina Rojas Mentors: Jim Chamberlain Monika Goyal	<ol style="list-style-type: none"> Rojas CR. Allyship and Admissions Amidst Racism. Acad Pediatr. 2022 Mar;22(2):171-172. doi: 10.1016/j.acap.2021.07.021. Epub 2021 Aug 1. Herchline D, Rojas C, Shah AA, Fairchild V, Mehta S, Hart J. A Quality Improvement Initiative to Improve Patient Safety Event Reporting by Residents. Pediatr Qual Saf. 2022 Jan 21;7(1):e519. Rojas CR, Coffin A, Taylor A, Ortiz P, Jenicek G, Hart J, Callahan JM, Shaw KN. Resident Communication With Patients and Families Preferring Languages Other Than English. Hosp Pediatr. 2023 Jun 1;13(6):480-491. Rojas CR, Chamberlain JM, Cohen JS, Badolato GM, Cook LJ, Goyal MK, Berkowitz D. Undertriage for Children With Caregivers Preferring Languages Other Than English. Pediatrics. 2023 Jun 1;151(6):e2022059386. doi: 10.1542/peds.2022-059386. PMID: 37190962. Berkowitz D, Cohen JS, McCollum N, Rojas CR, Chamberlain JM. Delays in treatment and disposition attributable to undertriage of pediatric emergency medicine patients. Am J Emerg Med. 2023 Dec;74:130-134. doi:10.1016/j.ajem.2023.09.054. Epub 2023 Oct 2. Atabaki SM, Shur NE, Munoz RA, Bhuvanendran S, Sable C, Rojas CR, Lopez-Magallon AJ, Clarke JC, Sabouriane CE, Krishnan A, Wessel DL. Direct-to-patient telemedicine: Expanding access to regional pediatric specialty care. J Investig Med. 2024 Feb;72(2):248-255. Rojas CR, Chapman J, Regier D. Hyperammonemia in the Pediatric Emergency Department. Pediatr Emerg Care. 2024 Feb 1;40(2):156-161.
2025	
Kala Frye Bourque Mentors: Katie Donnelly	<ol style="list-style-type: none"> A Deeper Look at the True Infant Sleep Related Death Rate in the District of Columbia- manuscript completed A Novel Approach to Increasing Safe Sleep Practices Through the Pediatric Emergency Department in The District of Columbia- manuscript completed
Brandon Ho Mentors: Jim Chamberlain Monika Goyal	<ol style="list-style-type: none"> Sran, S., Walsh, H., Agrawal, D., Dwivedi, P., Ho, B., King, S., Lindgren, C., Manuel, R., Nicholson, L., Yurasek, G. & Zaveri, P., Pavan Zaveri. Interprofessional Debrief on Racism, Equity, and Microaggressions (I-DREAM): Utilizing Simulation to Change Awareness, Attitudes, and Abilities Across an Institution. Academic Medicine. Lu, M., Ho, B., Ren, D., Wang, X. TriageAgent: Towards Better Multi-Agents Collaborations for Large Language Model-Based Clinical Triage", The 41st International Conference on Machine Learning AI for Science Workshop. Epub 2024 Jul 27. Ho, B., Lu M., Wang X, Butler R, Park J, Ren D. Evaluation of Generative Artificial Intelligence Models in Predicting Pediatric Emergency Severity Index Levels. Pediatric Emergency Care. 2025;41(4):251-255. Ho, B., Agrawal, D. These Hips Don't Lie: Deep Vein Thrombosis in an Adolescent With an Inferior Vena Cava Anomaly. Pediatric emergency care. 2025 Mar 10. Ho B., Waterhouse L., Isbey S. Triage nurse-initiated orders in pediatric emergency care: A single-center retrospective cohort study of appendix and testicular ultrasounds. Am J Emerg Med. 2025 Apr 17;94:119-124. Be a Buddy: Implementation and Perspective on a Near-Peer Mentorship Program – manuscript in process Participant and Facilitator Feedback from Interprofessional Debrief on Racism, Equity and Microaggressions: Content Analysis- manuscript in process
Ilana Lavina Mentors: Shilpa Patel Kristen Breslin	<ol style="list-style-type: none"> Lapite A, Lavina I, Goel S, Umana J, Ellison AM. A Qualitative Systematic Review of Pediatric Patient and Caregiver Perspectives on Pain Management for Vaso-Occlusive Episodes in the Emergency Department. Pediatr Emerg Care. 2023;39(3):162-166. Jarvis L and Lavina I. Gastrointestinal bleeding. In Shaw KN, Bachur RG, Chamberlain JM, et al. Fleisher & Ludwig's Textbook of Pediatric Emergency Medicine. Lippincott Williams & Wilkins; 9th edition to be published. Predictors of Recurrent Intentional Self-Poisoning in a Pediatric Emergency Department- manuscript in process Factors Associated with Youth-Reported and Caregiver-Reported Access to Firearms and Documentation of Lethal Means Restriction Counseling Among Pediatric Emergency Department Patients with a Mental Health Chief Complaint- manuscript submitted

FELLOWSHIP PUBLICATIONS

2025	
Alicia Rolin Mentors: Monika Goyal Shilpa Patel	<ol style="list-style-type: none"> 1. Multi-center study assessing geographic variability of adolescents with positive STI testing in pediatric emergency departments- manuscript in progress 2. PECARN Geospatial STI 3. PEMCRC DKA Study 4. Erjavac, B., Rolin, A.I., Gondy, K., Cranford, J., Shobassy, A., Biermann, B., Rogers, A.J., & Hong, V. Impact of the COVID-19 Pandemic on Children and Adolescents Presenting with a Psychiatric Emergency. Clin Pediatr. 2023 Mar;63(3):241-250. 5. Poonai N, Cohen DM, MacDowell D, Mistry RD, Mintegi S, Craig S, Roland D, Miller M, Shavit I. and Paediatric Emergency Research Network (PERN) Study Group. Sedation and Analgesia for Reduction of Pediatric Ileocolic Intussusception. JAMA Netw Open. 2023 Jun 1;6(6):e2317200. 6. Rolin, A.I., Badolato, G., Boyle, M., Foltz, D., & Goyal, M. (May 2024). Racial differences in testing for sexually transmitted infections in adolescent males presenting to the emergency department. Poster presented at: Pediatric Academic Societies (PAS) Meeting; Toronto, ON, Canada. 7.
Jasmine Thomas Mentor: Katie Donnelly	<ol style="list-style-type: none"> 1. Kumar P, Kaliamurthy S, Thomas J. Initiation of Buprenorphine Treatment of Opioid Use Disorder in Pediatric Emergency Departments. Pediatrics. 2024 Aug 1;154(2):e2024066226.



Children's National.

111 Michigan Avenue NW
Washington, DC 20010

ChildrensNational.org