

DIFC Funds Centre

Your gateway to
capital and growth

DIFC is the leading global financial centre in the Middle East, Africa and South Asia region. We've built the region's largest asset management ecosystem. Whether you're scaling up or exploring new markets, the DIFC Funds Centre is here to support you



Accelerated
time to market



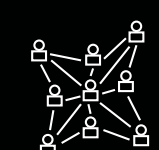
Access
to high-calibre
talent



Ease of
establishment



World-class
infrastructure



Networking
opportunities



Unmatched
privacy
and security



A first-of-its-kind dedicated hub for managers, located within DIFC, the region's leading global financial centre.

Play Video





A premier address for global fund managers.



A thriving community for
investment professionals.



Gateway to the region's rapidly growing wealth, offering unmatched access to global markets, and a hyper-connected growth ecosystem.



Designed to accelerate
growth and innovation.



Vibrant hub for collaboration,
inspiration, and growth.



Dedicated to driving growth
and scale.



Powered by DIFC, the middle east, africa and south asia region's largest financial ecosystem.





\$1.2 tn+

in top family
wealth

80,000+

millionaires in
Dubai

80+

Hedge
funds

800+

family
structures

46,000+

Total
workforce

410+

Wealth and asset
management firms

6,900+

Active
firms

900+

DFSA regulated and
supervised entities

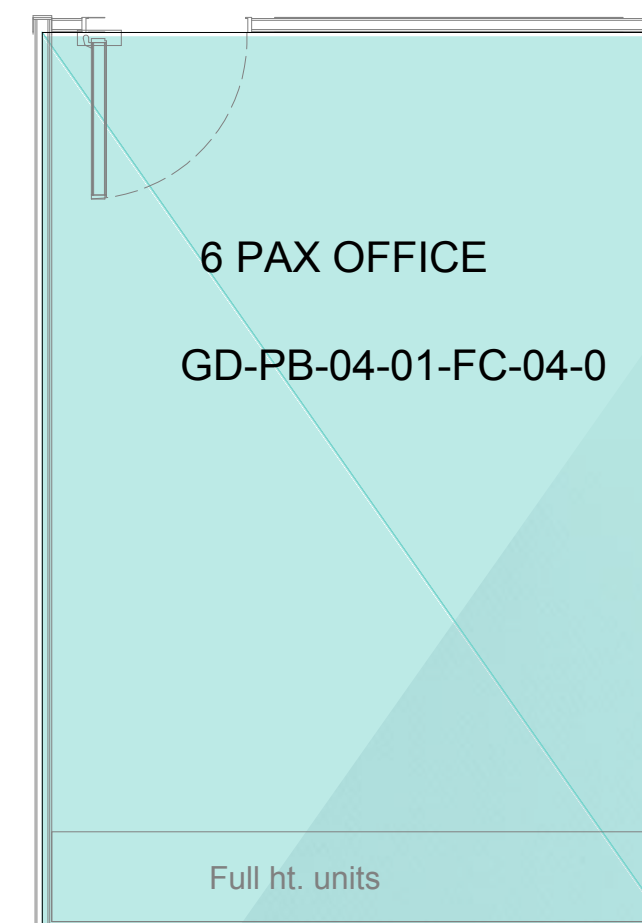
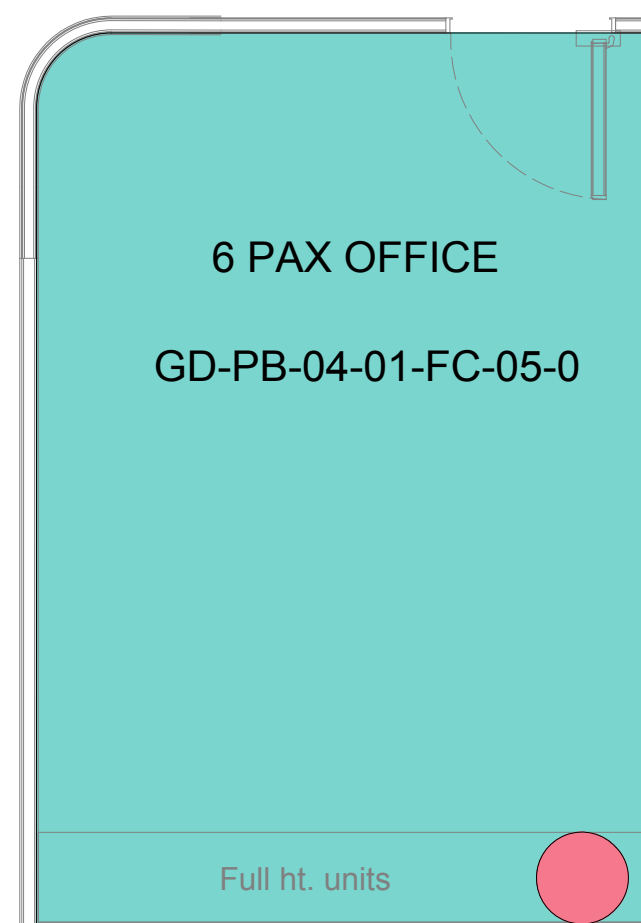
Floor plans



6 Pax offices



FLOOR KEY LOCATION

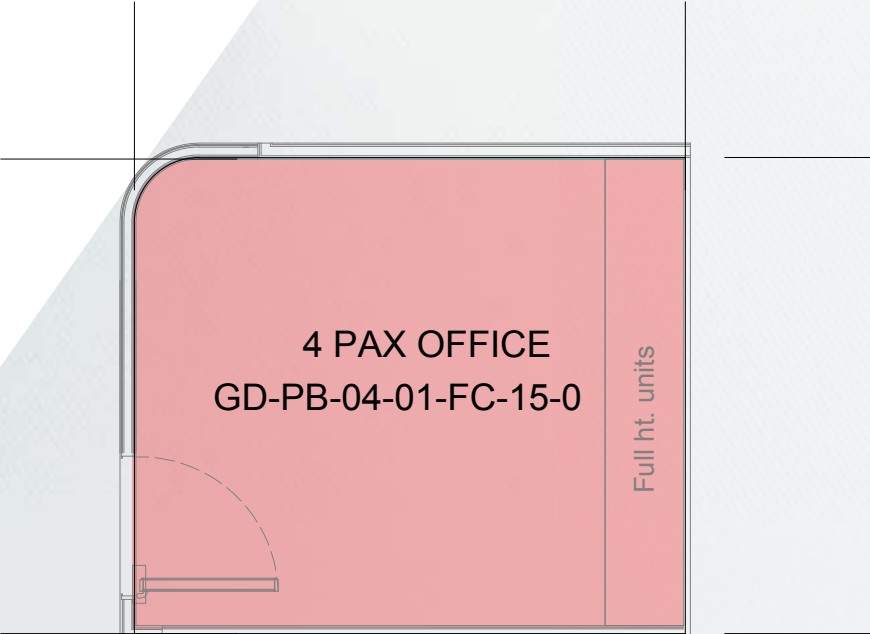




4 Pax offices

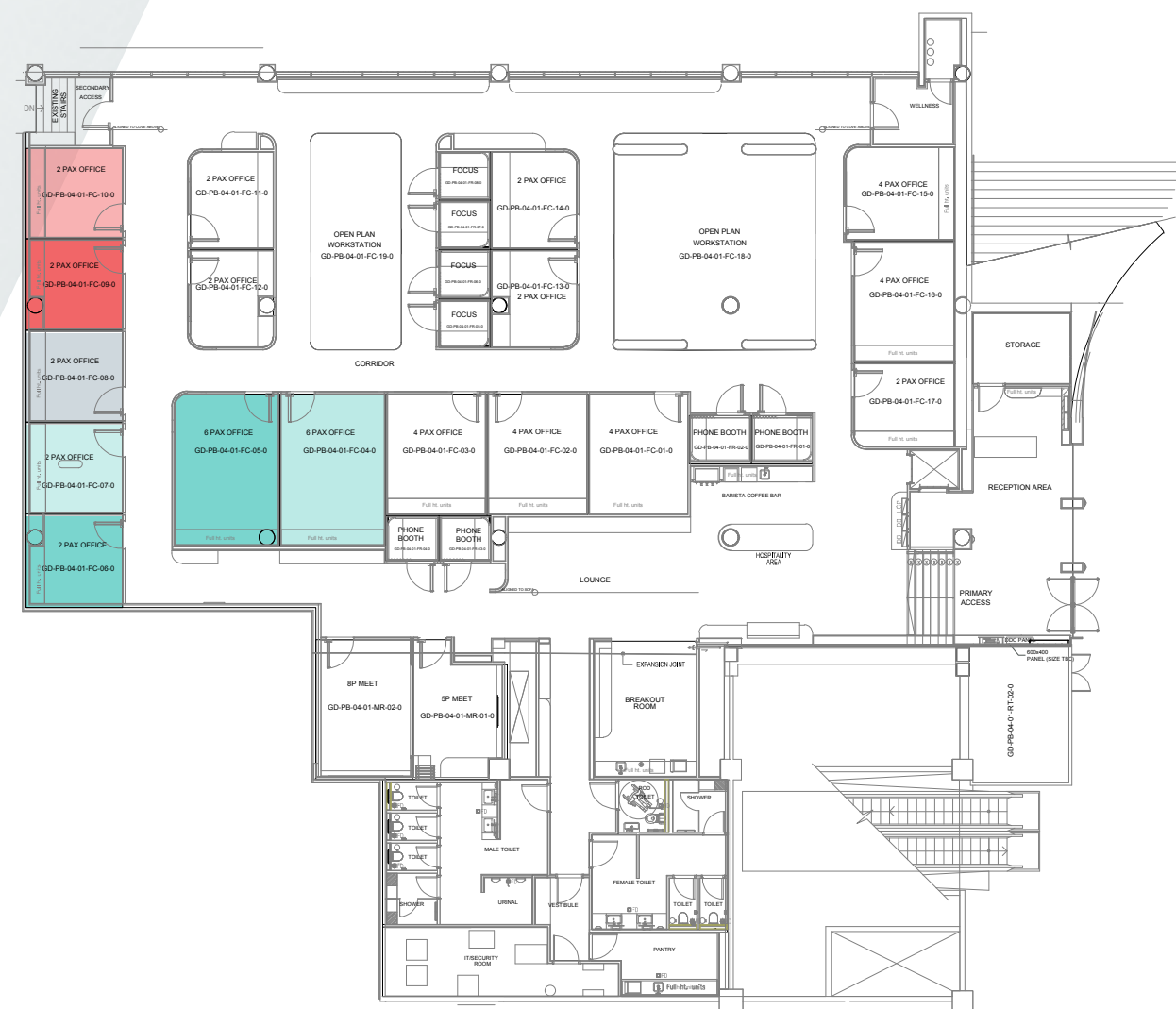


FLOOR KEY LOCATION

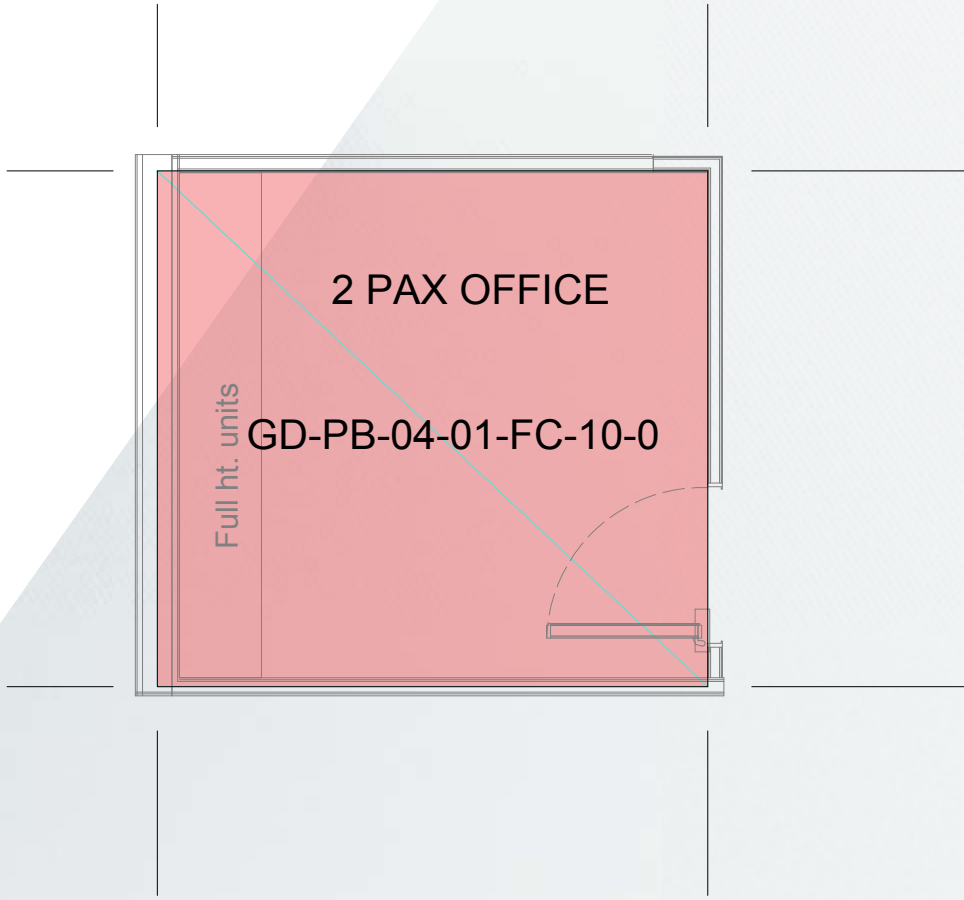
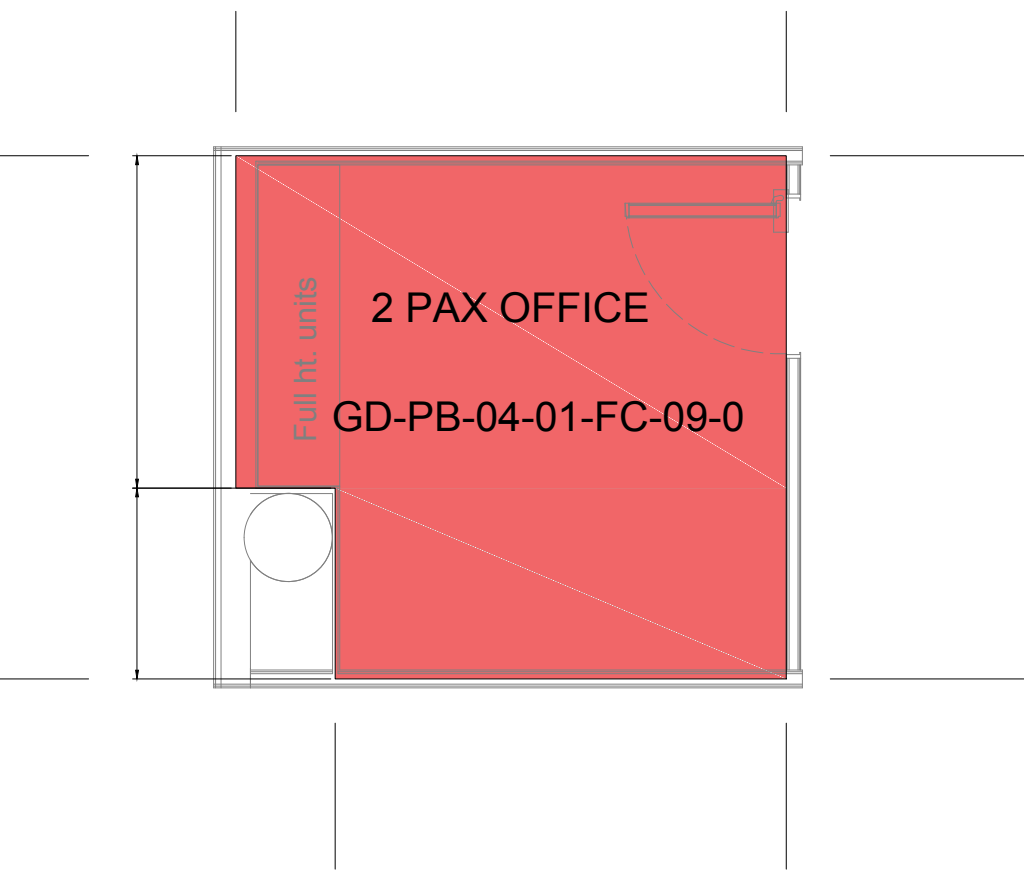
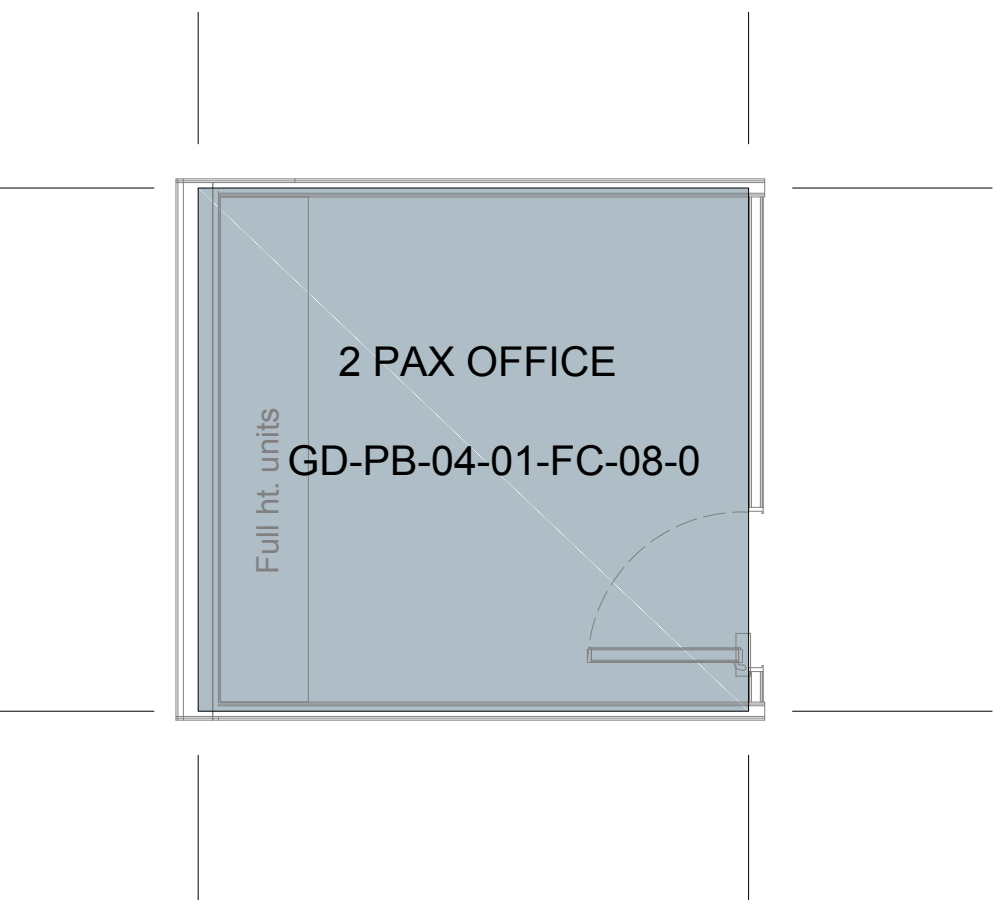
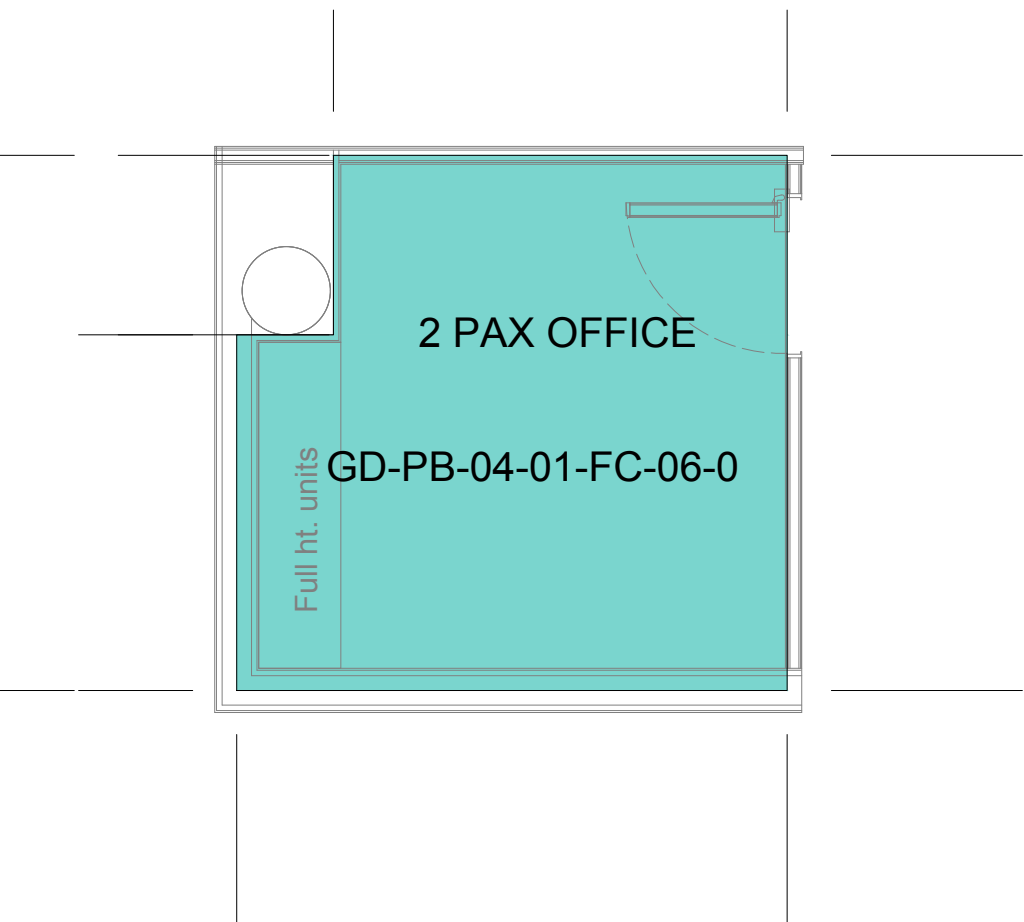




2 Pax offices



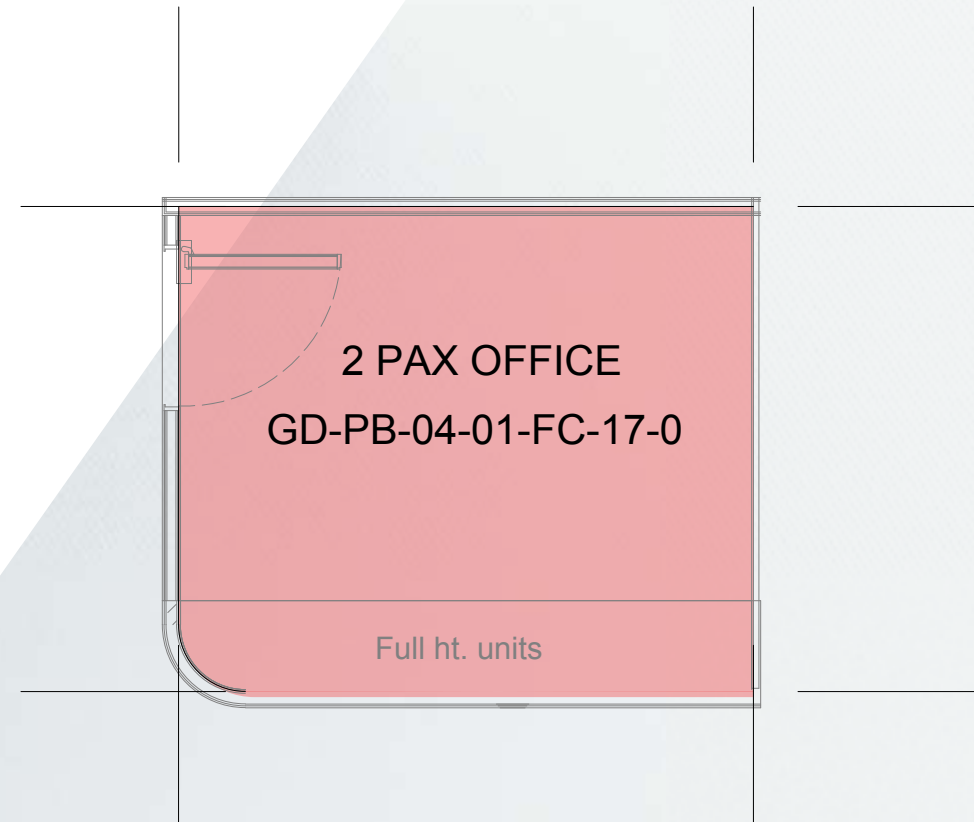
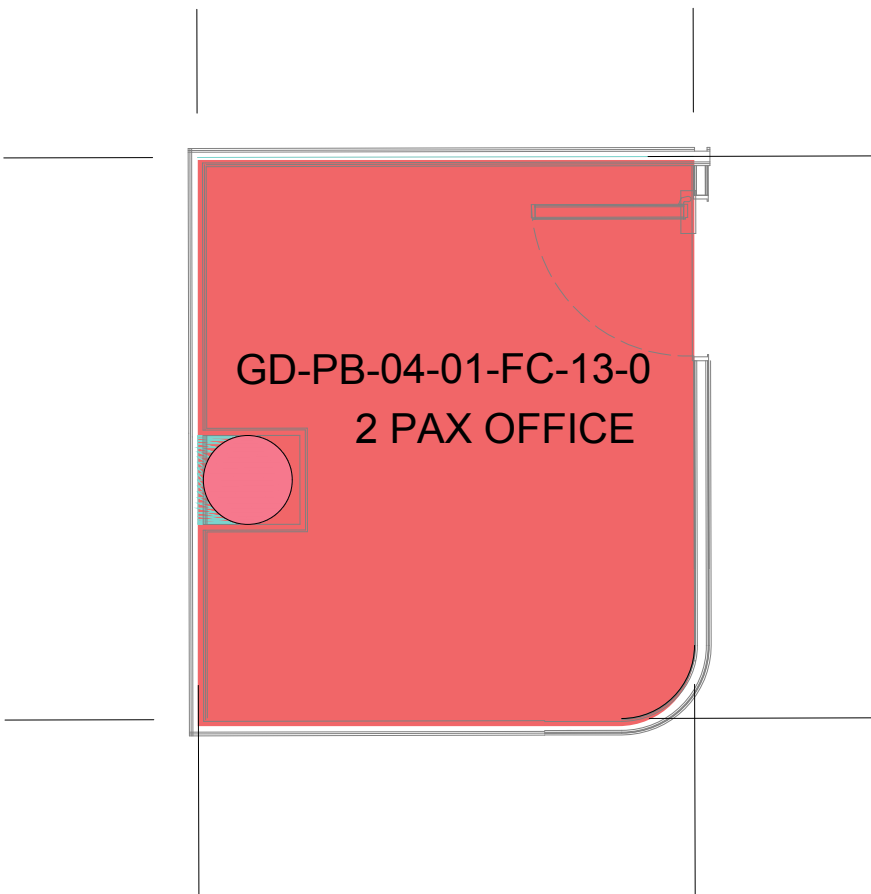
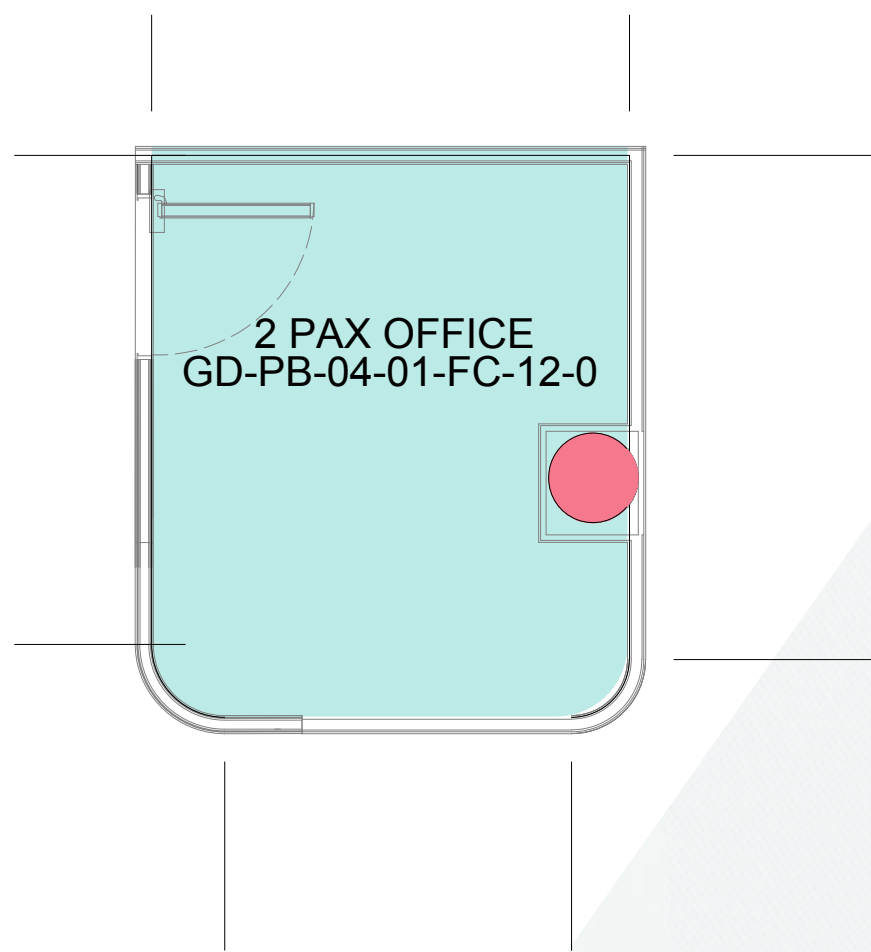
FLOOR KEY LOCATION



2 Pax offices

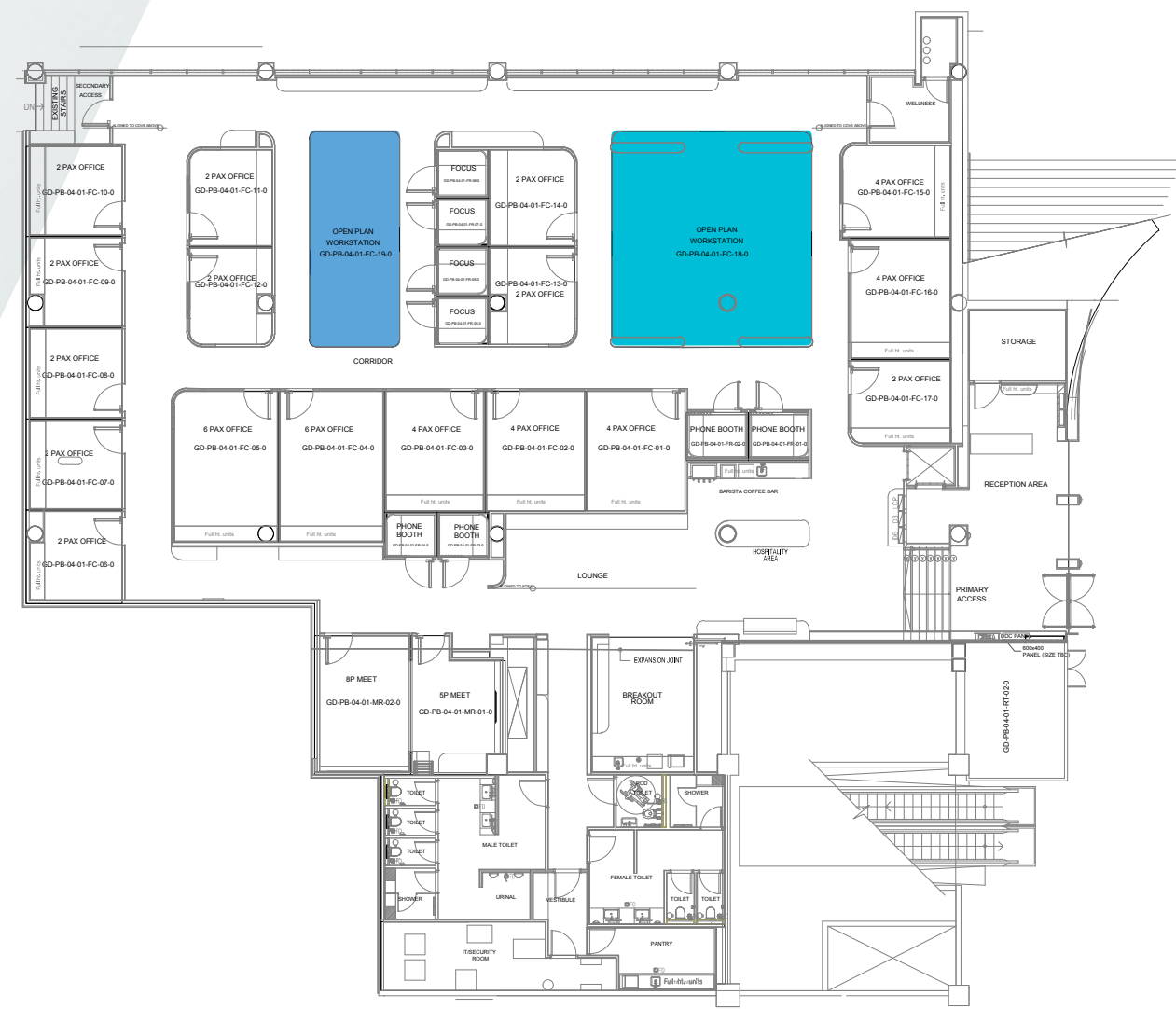


FLOOR KEY LOCATION

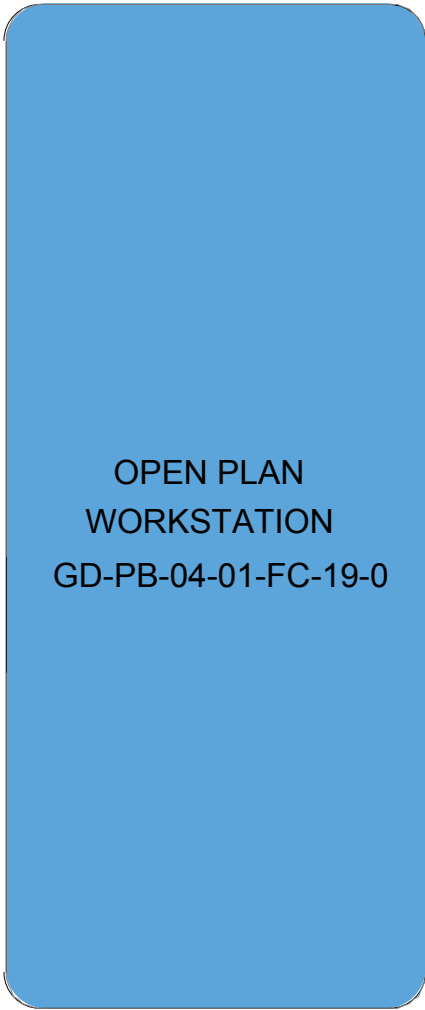




Fixed/Flexi Desk



FLOOR KEY LOCATION



Fixed desk



Flexi desk





Access the world from Dubai

Learn more | [Apply to join the DIFC Funds Centre](#)

Contact our team for further information on space allocation and waitlists.

Email: fundscentre.enquiry@difc.ae